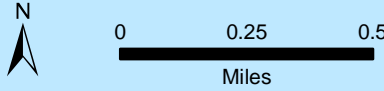
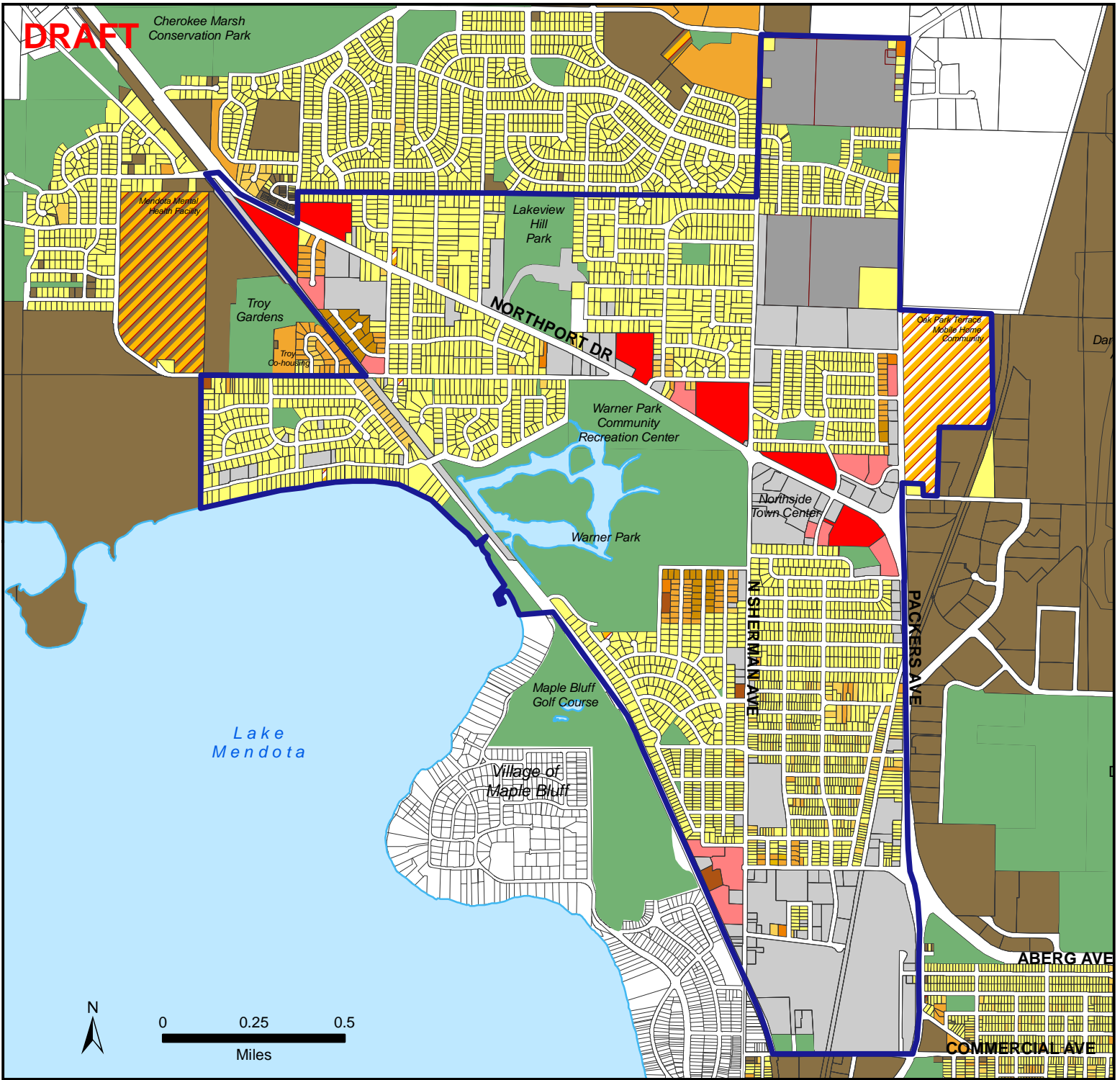


DRAFT



Northport-Warner Park-Sherman Neighborhood Planning Area

Type of Residential Structure

Residential City Parcels

Outside of the Study Area:

- 1 Unit
- 2 Units
- 3+ Units
- Res. Other

- Study Area Boundary
- Study Area - Other City Parcels
- Study Area - Other County Parcels
- City Nonresidential Parcels Outside of Study Area
- Dane County Parcels Outside of Study Area

City of Madison Residential Parcels: 2,844

Dane County Residential Parcels: 11

The Department of Planning & Community & Economic Development: Madison, WI

Source: City of Madison Planning Division, September 2008

RESIDENTIAL UNITS	UNITS	ACRES	PERCENT (ACRES)
1 Unit	2,591	629.3	75.5%
2 Units	220	22.0	2.6%
3-4 Units	327	21.7	2.6%
5-7 Units	15	0.6	0.1%
8 Units	280	13.0	1.6%
9-16 Units	66	3.0	0.4%
17-24 Units	88	3.7	0.4%
25-100 Units	727	29.5	3.5%
101+ Unit Parcels	866	49.6	6.0%
Residential Other	284	60.7	7.3%
TOTAL	5,464	833.1	100%