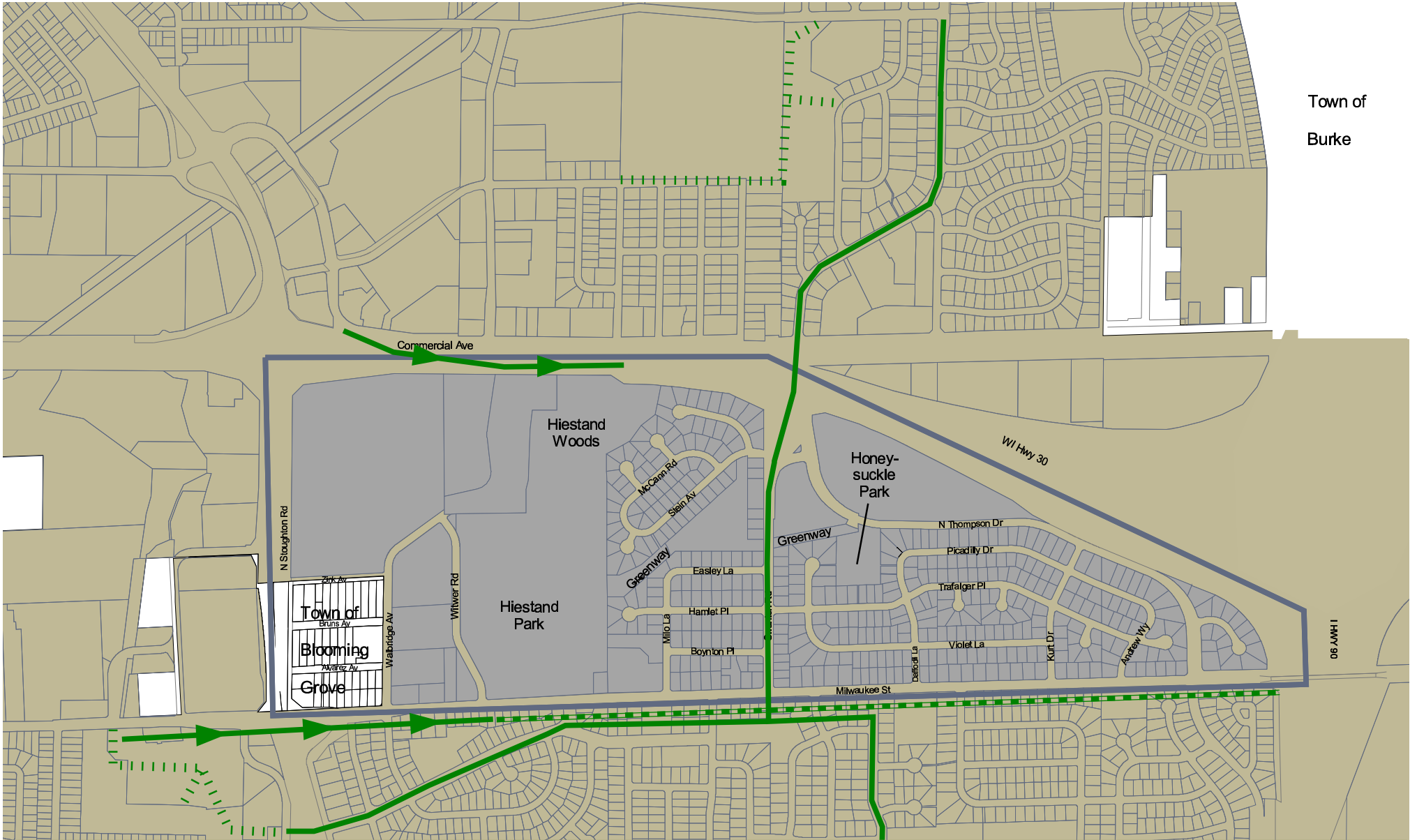


Town of  
Burke



# Hiestand Planning Area



**Bike Path**  
Special streets for bicyclists, on which motorized vehicles are prohibited. They are shared with pedestrians, skaters, and other non-motorized users.



**Bike Lane**  
A separate lane on the street for bicyclists, sometimes shared with parked cars or buses.



**Wide Curb Lane**  
The traffic lane next to the curb is extra wide so a motorist can safely pass a bicyclist without having to change lanes.



**Bike Route**  
Major routes through the city that most bicyclists will feel comfortable using.