

Resolution CARPC No. 2009-13

Amending the *Dane County Land Use and Transportation Plan* and *Dane County Water Quality Plan* by Revising the Central Urban Service Area Boundary and Environmental Corridors in the City of Madison and Town of Verona

WHEREAS, the Capital Area Regional Planning Commission has adopted, amended and reaffirmed the *Dane County Land Use and Transportation Plan* and *Water Quality Plan*; and

WHEREAS, said plans delineate urban service areas as amended through October 2009; and

WHEREAS, the City of Madison has requested an addition to the Central Urban Service Area, and is consistent with the Shady Wood Neighborhood Development Plan, adopted July 2009, the City of Madison Comprehensive Plan, adopted January 2006, and the City of Madison and City of Verona Intergovernmental Cooperation Agreement, adopted in 1996; and

WHEREAS, a staff analysis of the proposed amendment has been prepared, which indicates that the amendment is generally consistent with adopted regional plans and policies.

NOW, THEREFORE, BE IT RESOLVED that in accordance with §66.0309, Wis. Stats., and Sec. 208 of Public Law 92-500, the Capital Area Regional Planning Commission amends the *Dane County Land Use and Transportation Plan* and recommends the amendment of the *Dane County Water Quality Plan* by revising the Central Urban Service Area boundary and environmental corridors as shown on the attached map.

Adoption of this amendment is based on the land use and urban service plans submitted in support of this amendment, and conditioned on the City of Madison pursuing the following:

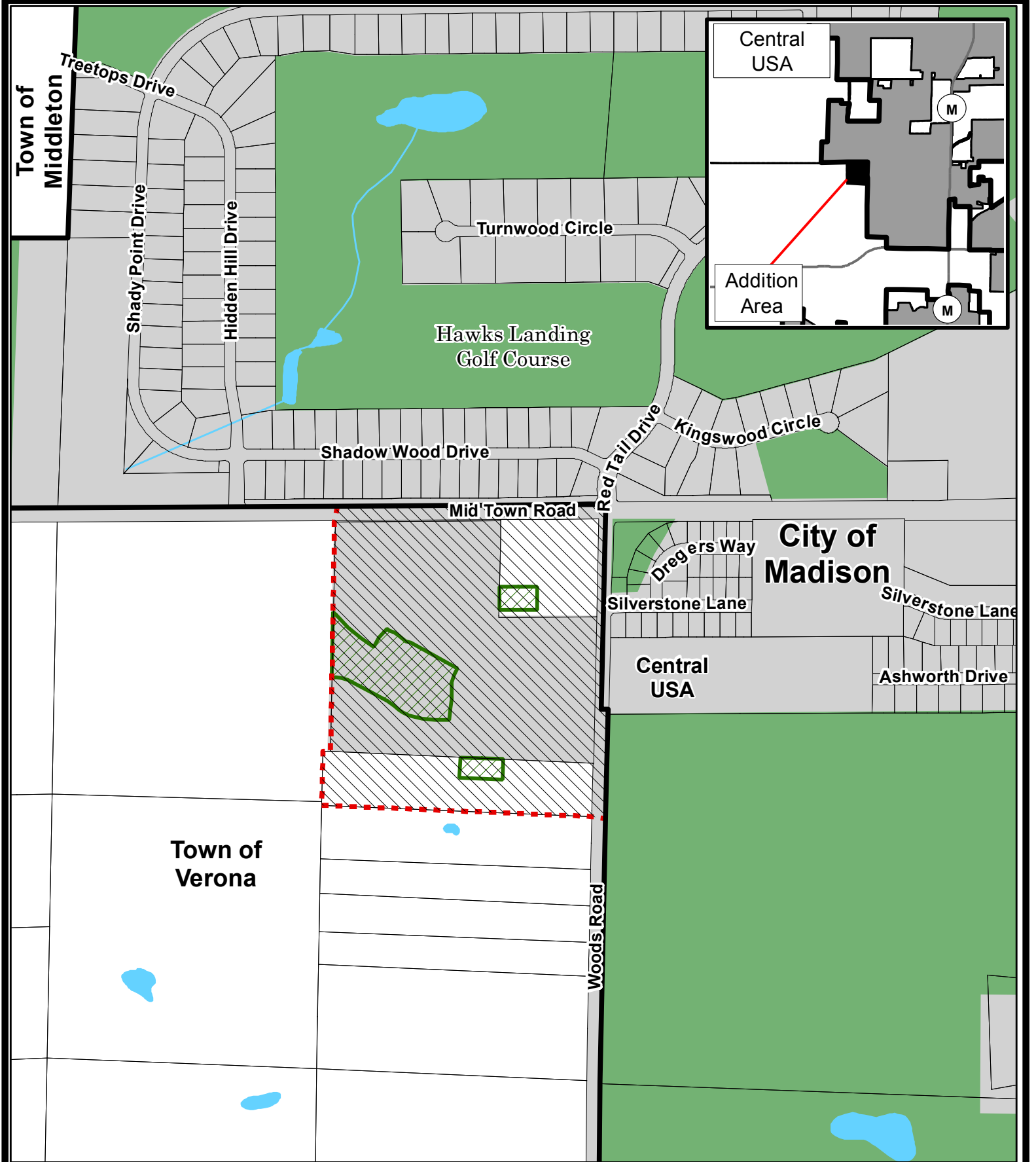
Submit a detailed stormwater management plan for CARPC and DCL&WCD staff review and approval prior to any land disturbing activities in the amendment area. The stormwater management plan should include the following:

- a. Install stormwater practices prior to other land disturbing activities and protect these practices from compaction and sedimentation during land disturbing activities or restore them after land disturbing activities are completed
- b. Provide at least 80% sediment control for the amendment area in accordance with existing ordinances
- c. Control peak rates of runoff for the 1, 2, 10, and 100-year 24-hour design storms to “predevelopment” levels
- d. Control post development runoff volumes to be equal to or less than pre-development runoff volumes for the one-year average annual rainfall period and five-year average rainfall period in addition to the 1, 2, and 10-year 24-hour design storms.
- e. Maintain WGNHS pre-development groundwater recharge rates (9 to 10 inches per year) with no caps on the extent of infiltration areas
- f. Provide deep tilling to restore all areas compacted during construction
- g. Control the thermal impacts of stormwater discharge to meet WDNR cold water standards in accordance with existing ordinances

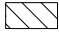





- h. Stormwater practices should be publicly managed, or have a perpetual legal maintenance agreement finalized with the City
- i. Include stormwater management facilities in environmental corridors.

January 14, 2010
Date Adopted



Jeff Miller, Chairperson



Map 1
 Amendment to the
 Central Urban Service
 Area and Environmental
 Corridors in the City of
 Madison and the Town of
 Verona

-  Service Area to be added (44.1 acres)
-  Proposed Environmental Corridor (4.9 acres)
-  Existing Environmental Corridor
-  Incorporated Area
-  Existing Urban Service Area Boundary
-  Proposed Urban Service Area Boundary

28 October 2009



0 600
 Feet

Prepared by staff
 of the CARPC.