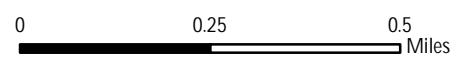


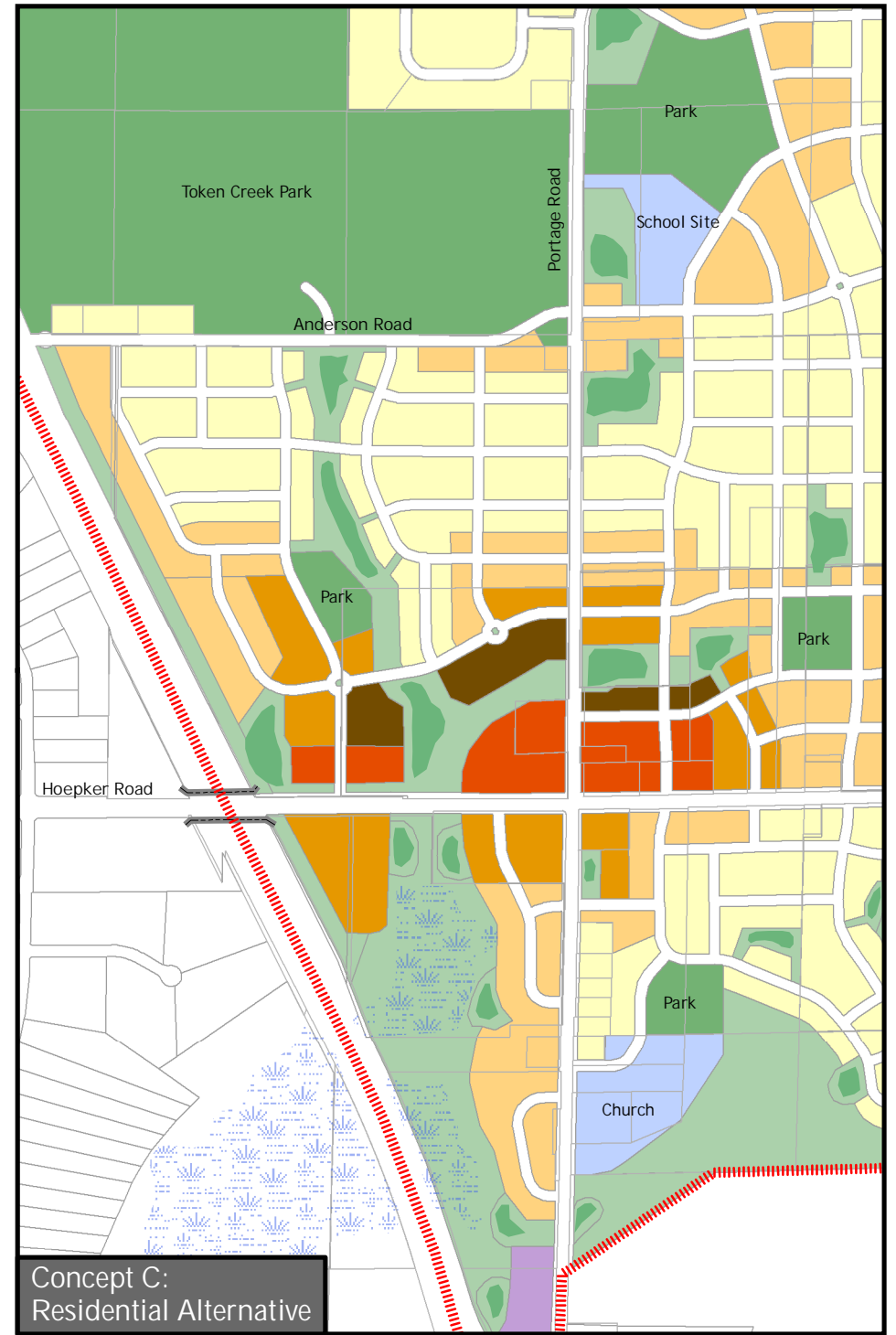
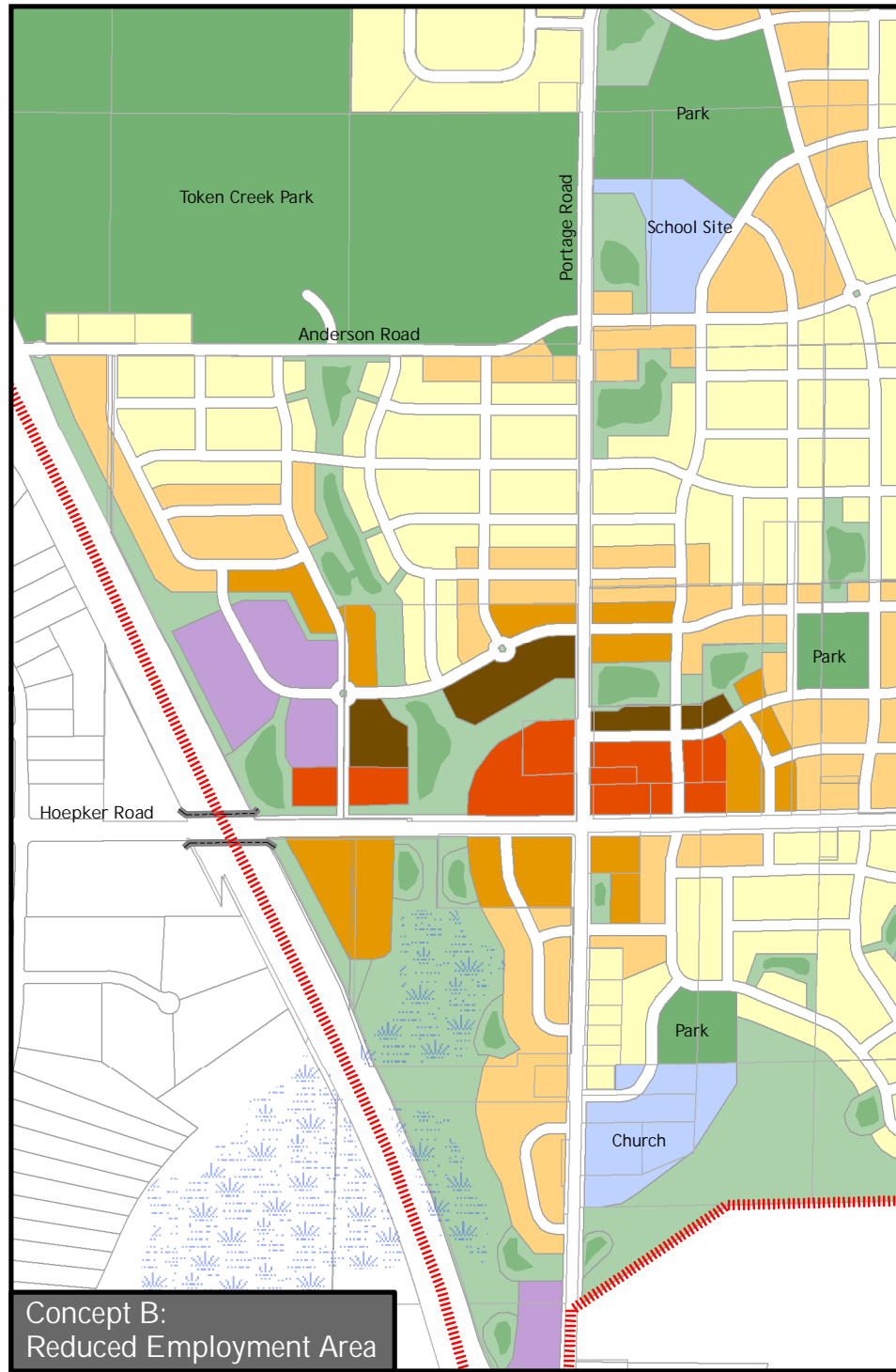
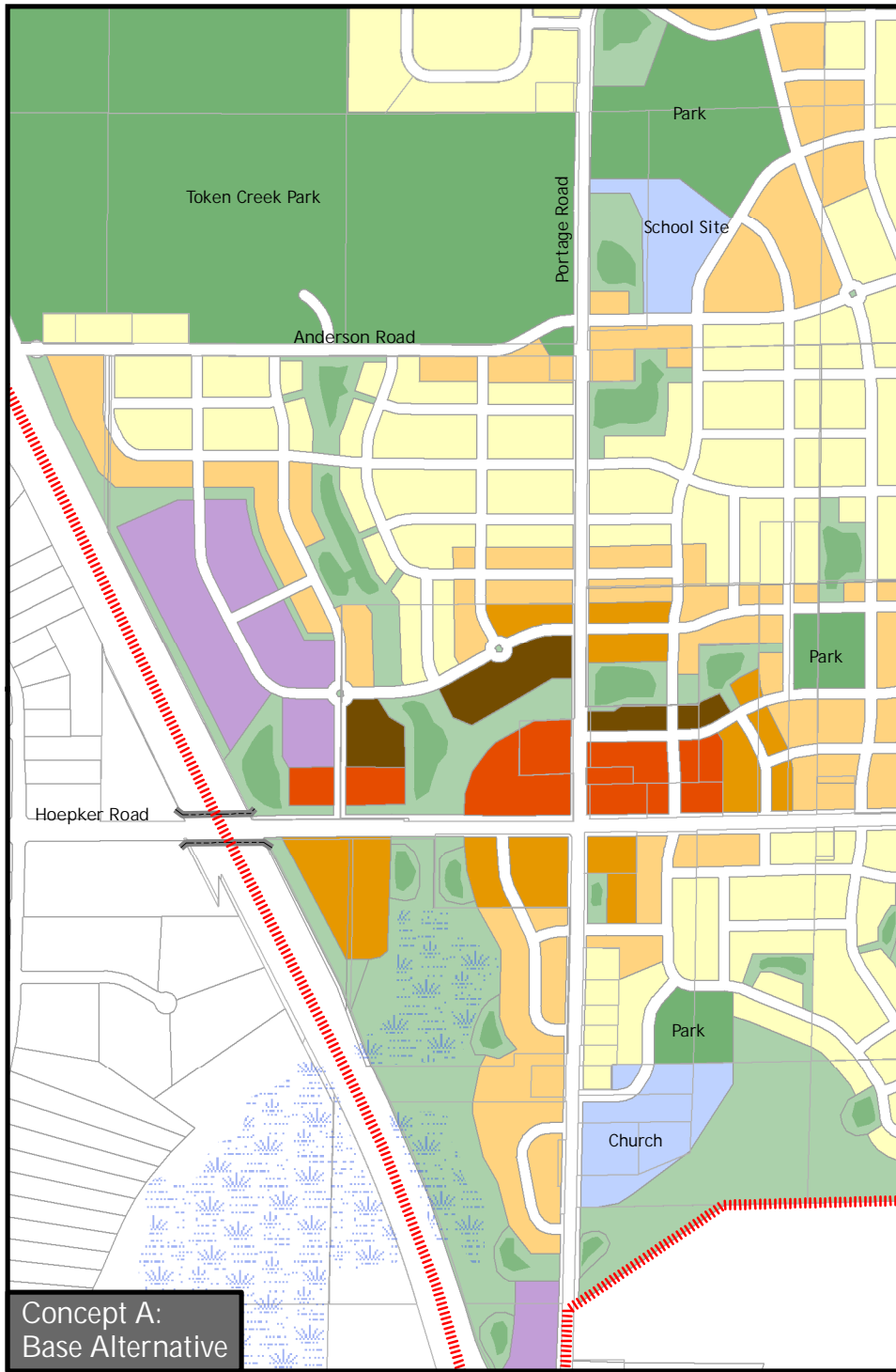
Map 6: Land Use and Street Plan

Pumpkin Hollow Neighborhood Development Plan
February 22, 2008

- | | | | |
|---------------------------|--|-------------------------------|--|
| Planning Area | Low Density Residential (0 - 15 units/acre)
Housing Mix 1 | Mixed Use Neighborhood Center | County / Municipal Park |
| Future Municipal Boundary | Housing Mix 2 | Potential Employment | Token Creek Conservation Area |
| Street Right-of-Way | Medium Density Residential (16 - 40 units/acre)
Housing Mix 3 | Civic / Institutional | Other Open Space and Stormwater Management |
| | Housing Mix 4 | Utilities | Potential Stormwater Location |
| | | Wetland | |

DRAFT



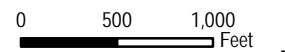


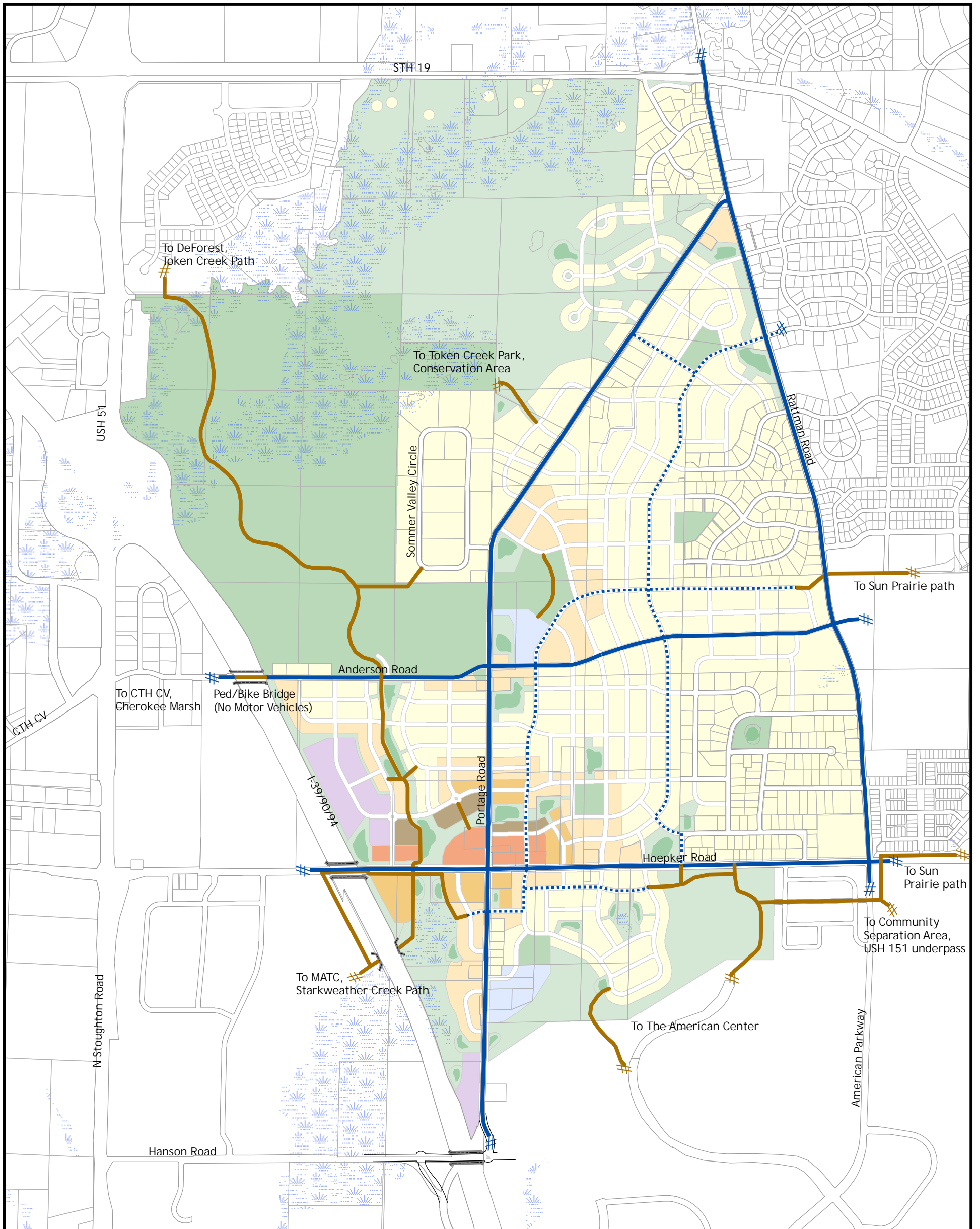
Map 7: Alternative Land Use Concepts

Pumpkin Hollow Neighborhood Development Plan
February 22, 2008

- Planning Area
- Street Right-of-Way
- Low Density Residential (0 - 15 units/acre)
 - Housing Mix 1
 - Housing Mix 2
- Medium Density Residential (16 - 40 units/acre)
 - Housing Mix 3
 - Housing Mix 4
- Mixed Use Neighborhood Center
- Potential Employment
- Civic / Institutional
- County / Municipal Park
- Other Open Space and Stormwater Management
- Potential Stormwater Location
- Wetland

DRAFT





Map 9: Transportation Plan - Pedestrian/Bicycle Facilities

Pumpkin Hollow Neighborhood Development Plan
February 22, 2008

- | | | | |
|-------|-------------------------------------|-------|-------------------------------|
| ----- | Future Municipal Boundary | ----- | Pedestrian/Bicycle Facilities |
| — | Off-Street Path | — | Marked Bicycle Lane |
| | Local Through Street for Bicyclists | | |

DRAFT

0 0.075 0.15
Miles