

March 18, 2009

The City of Verona has two comments that we wish to reiterate at every opportunity about your plans for this area:

- 1) 1) The City of Verona is very eager to see that additional north-south arterials parallel to CTH 'M' are created in this area to alleviate congestion on CTH 'M'. In your 'Shady Wood Neighborhood' planning area, we would appreciate it if you could show the following items on your plans to reflect Verona's long-term desires for north-south streets as follows:
 - a. a. We plan to align Nine Mound Road *south* of CTH 'PD' with Woods road at CTH 'PD'. Because CTH 'PD' curves in this area and crests a hill, we believe significant changes will be necessary to this proposed new intersection—possibly including a re-alignment of Woods Road north of 'PD'; CTH 'PD' east and west of Woods Road; or both. Such re-alignments could have an impact on the area included in your current land-use plans—especially if Woods Road north of 'PD' would be re-aligned. Please see the attached map from our draft comprehensive plan for more details. If these items could be shown on your maps we would appreciate it;
 - b. b. We plan to bring a new north-south street from the south—labeled 'Northern Light's Road' on the attached map—that will connect with CTH 'PD' approximately 1,320 feet *west* of the intersection of Shady Oak Lane/CTH 'PD'. Ideally—this street would then continue north through your planning area and connect with Shady Oak Lane approximately 2,640 feet to the north. Again—please see the attached map from our draft comprehensive plan for more details. If this street connection could be shown on your maps we would appreciate it.
 - c. c. The City of Verona hopes that a connection between Country View (on the South) and Mounds View (on the North) will be created to the west of your 'Shady Wood Neighborhood' planning area. This street connection is (mistakenly for the moment...) labeled as 'Ticker's Trail' on the attached map. If this street connection could be shown on your maps we would appreciate it.

Also—although perhaps less important to the City of Verona—is an east-west street through your planning area that we included in our draft comprehensive plan—basically an extension of Paulson Road. We understand concerns such a street raises since it would cross the Ice Age Trail. Much more important to the City of Verona are our plans/desires for north-south streets as described above.

- 2) 2) The City of Verona wishes to work with Madison on planning for residential density in this area—given the fact that the area will be within the Verona Area School District and the fact that the City of Verona has policies in place to regulate the rate of residential development and population growth as it impacts our school district; and

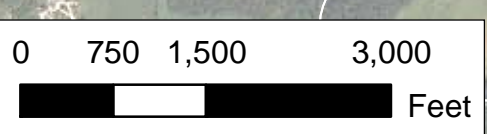
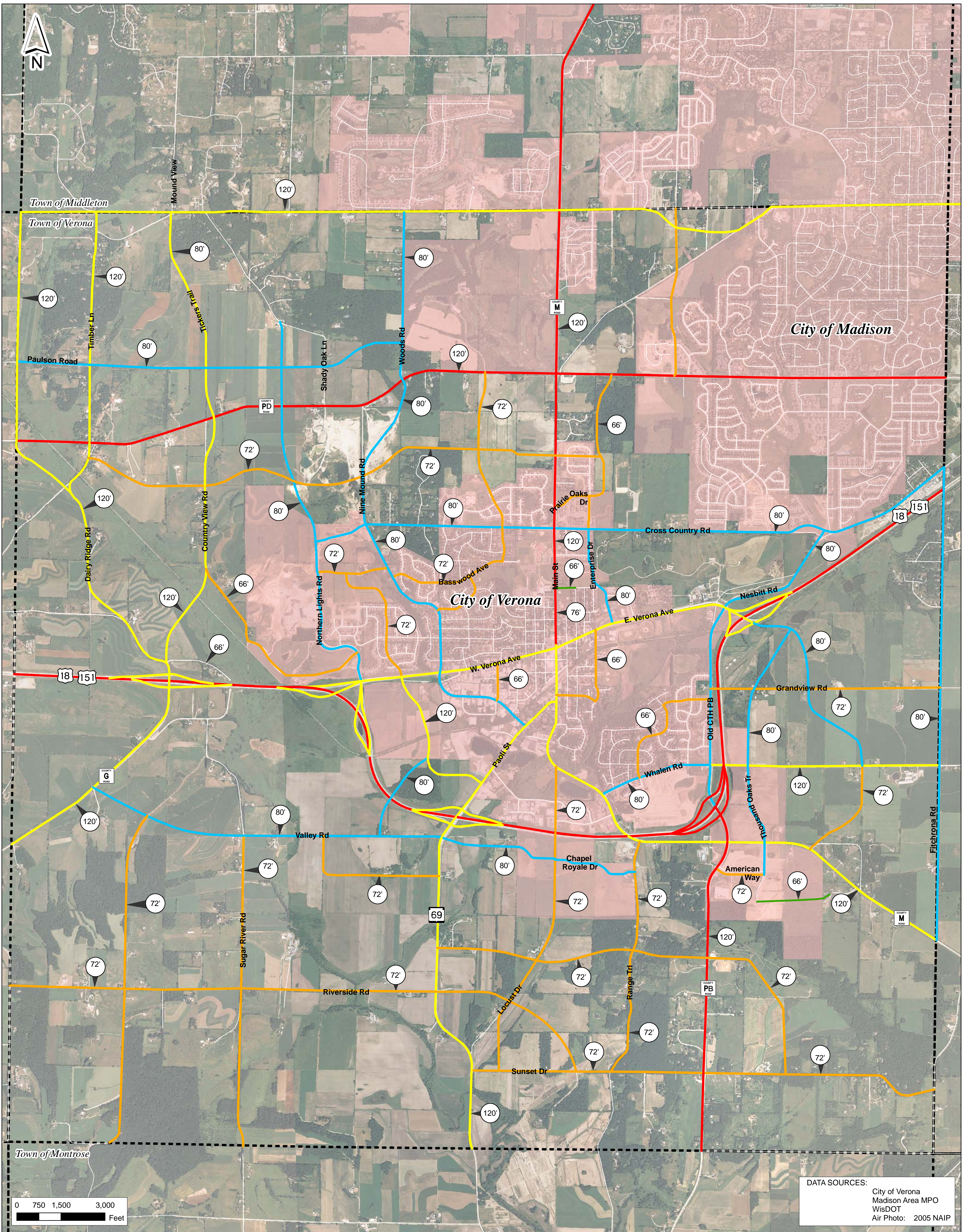
We appreciate that this area is being planned by the City of Madison and not the City of Verona, but we hope that you can incorporate our goals for this area—as outlined above—as you proceed.

Thank-you for taking our comments into your planning efforts for your 'Shady Wood Neighborhood Development Plan'.

Bruce Sylvester, AICP
City of Verona
111 Lincoln Street
Verona, Wisconsin 53593

608-848-9941

Bruce.sylvester@ci.verona.wi.us



DATA SOURCES:
 City of Verona
 Madison Area MPO
 WisDOT
 Air Photo: 2005 NAIP

Legend	
	Right of Way Width
	Principal Arterial
	Minor Arterial
	Major Collector
	Minor Collector
	Local Road Connection
	Township Boundary
	Municipal Limits

Proposed Future Roadway Right of Way Widths

City of Verona

