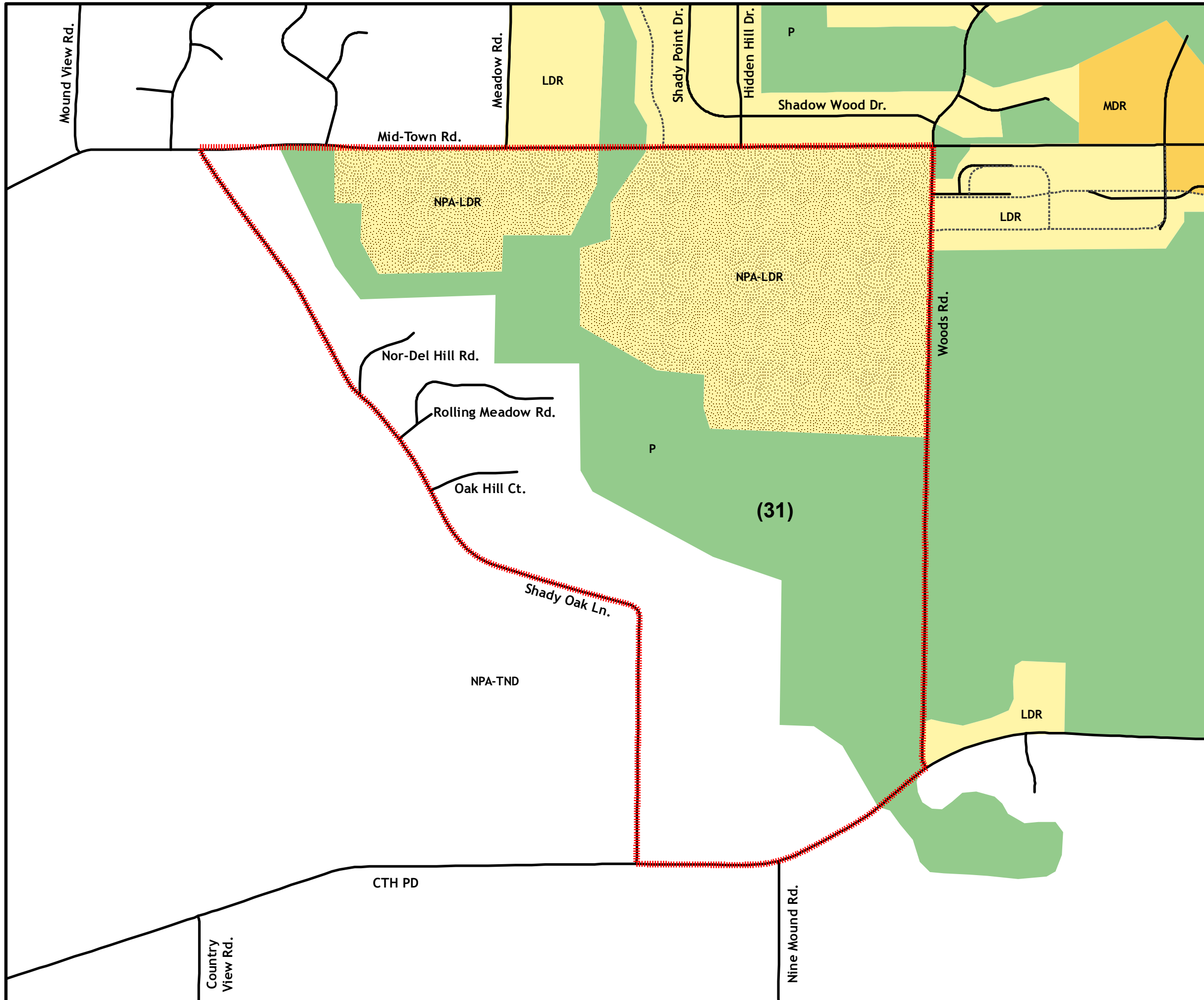


Appendix Map 2: Madison Comprehensive Plan Generalized Future Land Use

Shady Wood
Neighborhood Development Plan
March 2009



Planning Area

Residential Districts

LDR Low Density (0 - 15 units/acre)

MDR Medium Density (16 - 40 units/acre)

Open Space - Agricultural Districts

P Park and Open Space

Special Overlay Designations

NPA Neighborhood Planning Area
(Traditional Neighborhood Development Encouraged)

Land Use Note

(31) There are significant natural glacial features along this corridor which should be preserved and incorporated into a future extension of the Ice Age National Scenic Trail connecting the planned trail segment with the University Ridge Golf Course with trail segments extending north along the terminal moraine. City plans for future development of adjacent lands should include plans for permanent preservation and trail development within this recommended open space corridor.

DRAFT

