



Madison Metro Transit System

1101 East Washington Avenue
Madison, Wisconsin, 53703
Administrative Office: 608 266 4904
Fax: 608 267 8778



October 26, 2006

TO: Plan Commission
FROM: Timothy Sobota, Transit Planner, Metro Transit
SUBJECT: **1610 Gilson Street – “Gilson Street Redevelopment”**

Metro Transit has reviewed the subject development and has the following comments.

MAJOR OR NON-STANDARD REVIEW COMMENTS (Comments which are special to the project and/or may require additional work beyond a standard, more routine project.)

1. The applicant shall install a concrete passenger boarding pad on the north side of Gilson Street, approximately ten feet east of curb ramp along the east side of the Beld Street intersection. The concrete pad shall occupy the full distance of the terrace, measure 6 feet in width parallel to the street, and lie flush between the sidewalk and the top of curb.
2. The applicant shall include the location of this passenger amenity on the final documents filed with their permit application so that Metro Transit may review and approve the design.

GENERAL OR STANDARD REVIEW COMMENTS

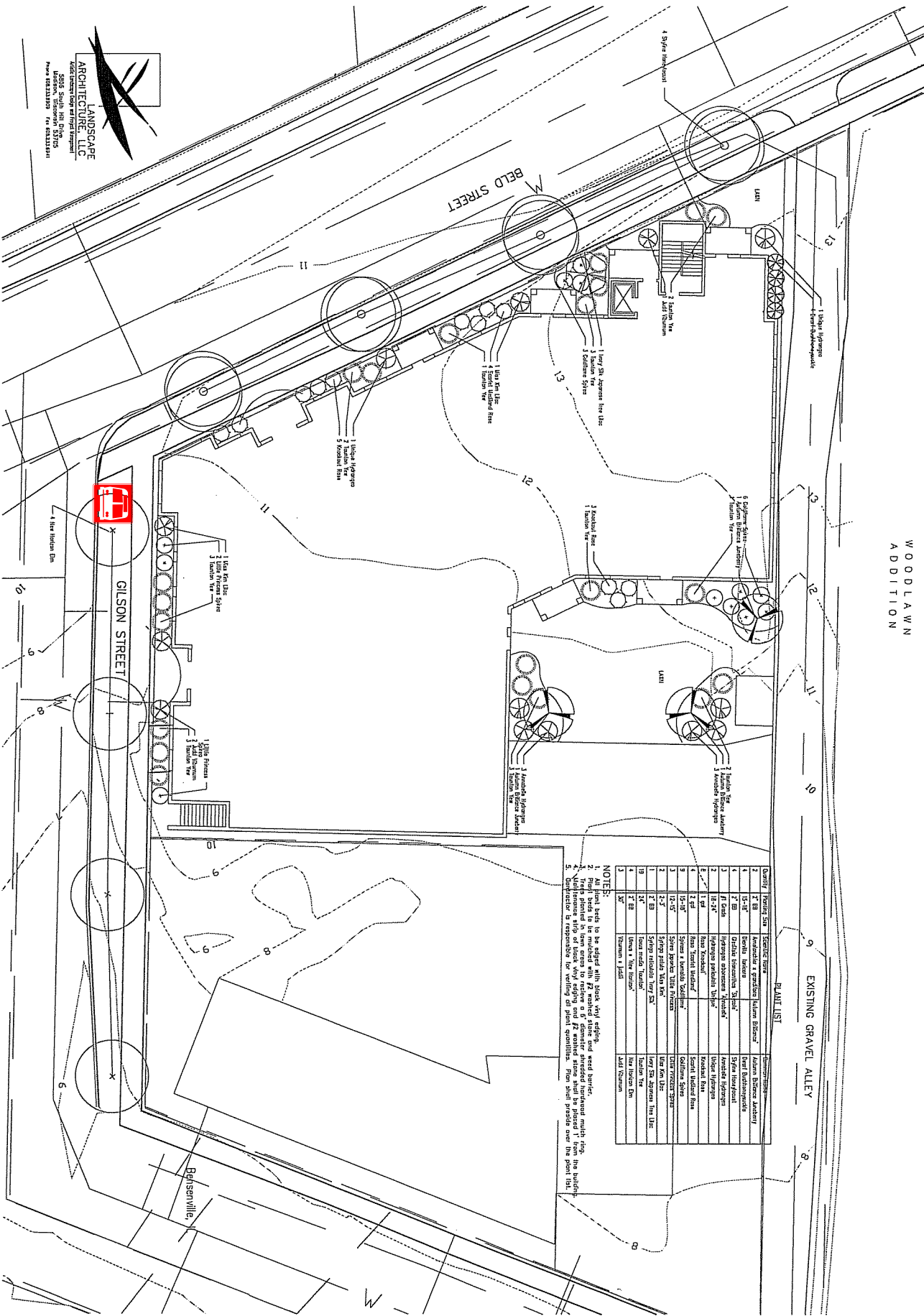
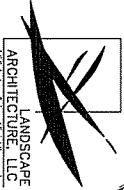
In addition, we offer the following General or Standard Review Comments:

3. Metro Transit operates service five days a week along Gilson Street past this bus stop location ID #0110.

Please contact Tim Sobota, Metro Transit at 261-4289
or by email at <tsobota@cityodmadison.com>
if you have questions regarding the above items.

CC: Project contact person, Ed Banks: banksdevelopment@yahoo.com (email)

Atch. Exhibit page “LS-1” [9/6/2006], notated with approximate amenity location



PLANT LIST

Quantity	Product Code	Scientific Name	Common Name
2	2-8B	Koeleria	Koeleria
2	4-10	Artemisia	Artemisia
2	7-10	Quercus	White Oak
2	11-10	Hydrangea	Hydrangea
2	12-10	Hydrangea	Hydrangea
2	13-10	Hydrangea	Hydrangea
2	14-10	Hydrangea	Hydrangea
2	15-10	Hydrangea	Hydrangea
2	16-10	Hydrangea	Hydrangea
2	17-10	Hydrangea	Hydrangea
2	18-10	Hydrangea	Hydrangea
2	19-10	Hydrangea	Hydrangea
2	20-10	Hydrangea	Hydrangea

NOTES:
 1. All plantings to be set with back soil added.
 2. All plantings to be set with mulch added.
 3. This plan is in hand to show a 6' diameter sidewalk with a 6' radius.
 4. The plan is not to scale.
 5. The contractor is responsible for verifying all plant quantities.

1	LS	DATE	ISSUE
		PROJECT NO.	DATE
		DATE	ISSUE

GILSON STREET DEVELOPMENT
 BESHM INVESTMENT GROUP, LLC
 1610 GILSON STREET
 MADISON, WISCONSIN, 53715

Bount Design Studio, LLC
 2002 Grand Union Plaza, Suite 100
 Madison, WI 53718
 Phone: 608.785.1500
 Fax: 608.785.1501
 Email: info@bountdesignstudio.com

CONCEPT DESIGN
 NOT FOR CONSTRUCTION

THE DESIGN REPRESENTED BY THESE DRAWINGS IS THE PROPERTY OF BOUNT DESIGN STUDIO, LLC. THESE DRAWINGS, WHETHER PRINTED OR IN ELECTRONIC FORM, MAY NOT BE COPIED OR REPRODUCED IN ANY FORM WITHOUT THE EXPRESS WRITTEN CONSENT OF BOUNT DESIGN STUDIO, LLC OF MADISON, WISCONSIN.