



## Madison Metro Transit System



1101 East Washington Avenue  
Madison, Wisconsin 53703  
Administrative Office: 608 266 4904  
Fax: 608 267 8778

December 15, 2005

TO: Plan Commission  
FROM: Timothy Sobota, Transit Planner, Metro Transit  
SUBJECT: **33 South Broom Street – Rezoning – Broom Street Lofts**

Metro Transit has reviewed the subject development and has the following comments.

**MAJOR OR NON-STANDARD REVIEW COMMENTS** (Comments which are special to the project and/or may require additional work beyond a standard, more routine project.)

1. The applicant shall install and maintain a concrete passenger boarding pad on the east side of South Broom Street, approximately five feet south of the sidewalk and curb ramp on West Washington Avenue (#0965). The concrete pad shall occupy the full distance of the terrace, measure a minimum of 6 feet in width parallel to the street, and lie flush between the sidewalk and the top of curb.
2. The applicant shall install and maintain a passenger waiting shelter with bench seating and a trash receptacle on top of a concrete pad or other suitable surface on the east side of Broom Street south of West Washington Avenue, in an area adjacent the concrete passenger boarding pad described above. If installed on City right-of-way between the curb and sidewalk, the amenities may not obstruct a six-foot zone of concrete pad between the curb and sidewalk on the north end, nearest the crosswalk.  
*Metro Transit initiated this comment during a pre-submission meeting with the applicant, and presented this condition as part of the application for the rezoning of 309 West Washington Avenue. The current landscape plan submitted by the applicant shows just a bench with trash receptacle on City right-of-way between the curb and sidewalk. The current landscape plan further shows the bench and trash receptacle blocking the access zone requirement.*
3. Such passenger amenity requests are typically fulfilled with the applicant installing the items on private property behind the sidewalk. It is Metro Transit's recommendation that the applicant continue to review the potential of placing the amenities outlined above on private property.  
**Placement of privately installed and maintained property on City right-of-way will require the review and approval of additional City agencies, including City Real Estate and City Engineering, prior to Metro Transit giving final approval to the plans.**
4. The developer shall include this concrete passenger boarding pad, shelter with bench, and trash receptacle on the final documents filed with their permit application so that Metro Transit may review and approve the design.

### GENERAL OR STANDARD REVIEW COMMENTS

In addition, we offer the following General or Standard Review Comments:

5. Metro Transit operates transit service along West Washington Avenue and Broom Street seven days a week. Metro bus stop #0965 is on the east side of Broom Street, south of West Washington Avenue.

December 15, 2005

Page 2

6. The PUD/SIP submitted with this rezoning, and dated October 26 2005, does show the placement of a “new bus shelter” at the bus stop identified above. However, it does point to placing it in the City right-of-way.

Please contact Tim Sobota, Metro Transit at 261-4289  
or by email at <tsobota@cityofmadison.com>  
if you have questions regarding the above items.

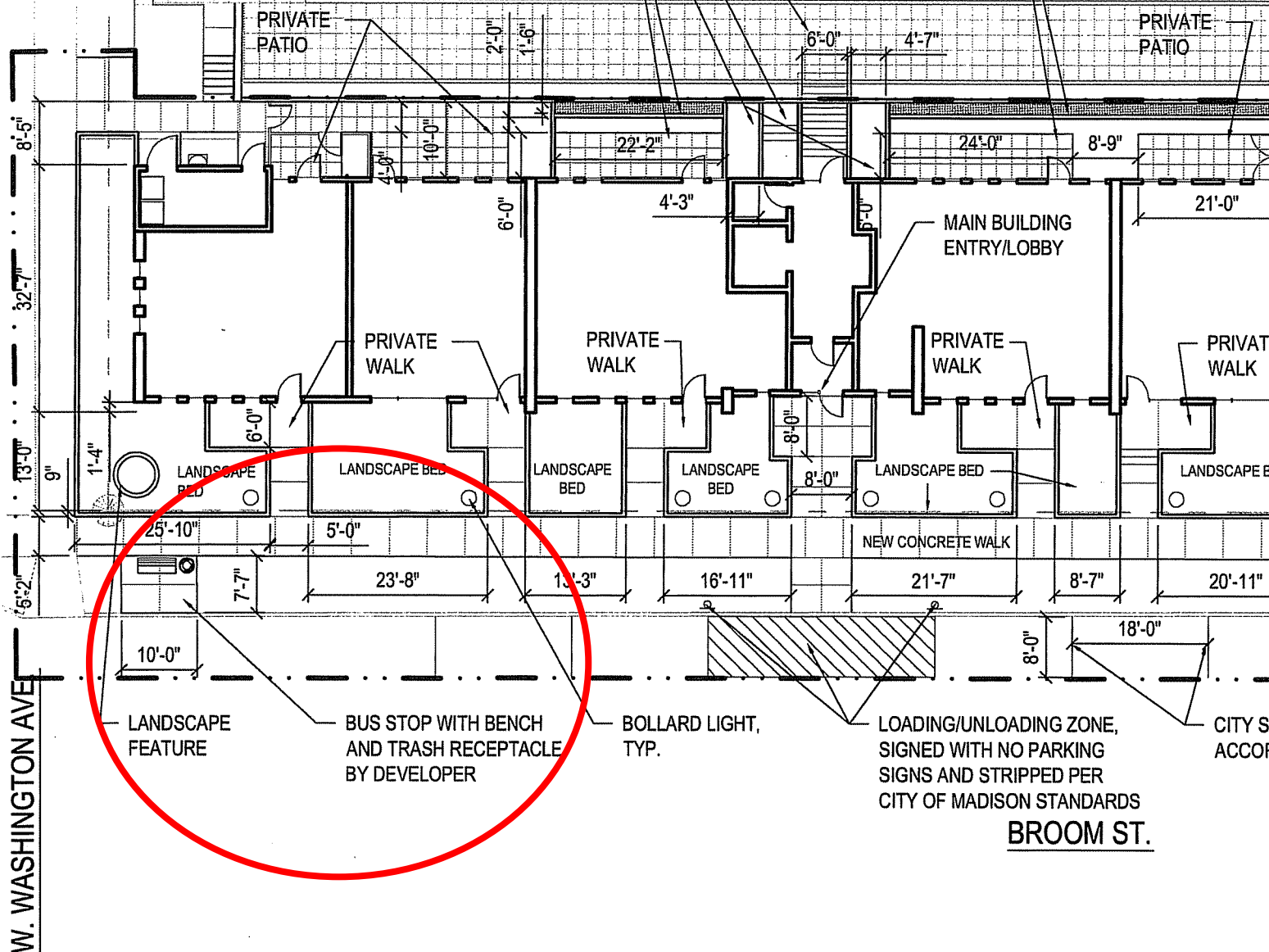
CC: Project contact person, Thomas Miller: <tcm@alexandercompany.com> (email)  
City Real Estate, Jerry Lund: <jlund@cityofmadison.com> (email)  
City Engineering, Eric Pederson <epederson@cityofmadison.com> (email)

Atch. Portion of submission page C 102 “Layout Plan” [10/26/2005]

345 W WASHINGTON AVE.

STAIRS CONNECTING UPPER  
PARKING DECK TO BUILDING LOBBY  
STAIRS CONNECTING UPPER PARKING  
DECK TO MECHANICAL ROOM  
LANDSCAPE BED  
GRATED AIR WAY  
PRIVATE PATIO

GRATED AIR WAY  
PRIVATE PATIO



FILE: P:\24\959\000\CD\sheet\9599-31-PRAL\_Layout.dwg USER: mrook DATE: Oct. 25 2005 TIME: 03:49 pm

**NOTE:**

1. ALL ENTRANCE WALKS AND PRIVATE PATIOS SHALL BE CONCRETE PAVEMENT.
2. NOTE: ALL PRIVATE PATIO SPACES ALONG THE REAR OF BUILDING WILL BE FENCED AND GATED
3. SEE EXISTING CONDITIONS SHEETS FOR ALL EXISTING FEATURES INCLUDING SIGNAGE, STREET LIGHTING AND UTILITIES.
4. SEE CAPITOL WEST PHASE 1 SIP PACKAGE FOR ADJACENT DEVELOPMENT INFORMATION.

N