



Madison Metro Transit System

1101 East Washington Avenue
Madison, Wisconsin, 53703
Administrative Office: 608 266 4904
Fax: 608 267 8778



August 7, 2006

TO: Plan Commission
FROM: Timothy Sobota, Transit Planner, Metro Transit
SUBJECT: **5901 Odana Road – “Smart Motors”**

Metro Transit has reviewed the subject development and has the following comments.

MAJOR OR NON-STANDARD REVIEW COMMENTS (Comments which are special to the project and/or may require additional work beyond a standard, more routine project.)

1. The applicant shall install a concrete passenger boarding pad on the south side of Odana Road, approximately eighty feet east of crosswalk marking along the east side of the Tokay Boulevard intersection. The concrete pad shall occupy the full distance of the terrace, measure 6 feet in width parallel to the street, and lie flush between the sidewalk and the top of curb.
2. The applicant shall install a concrete passenger boarding pad on the south side of Odana Road, approximately twenty-five feet west of western-most driveway apron serving the area marked employee parking. The concrete pad shall occupy the full distance of the terrace, measure 6 feet in width parallel to the street, and lie flush between the sidewalk and the top of curb.
3. The applicant shall include the location of these passenger amenities on the final documents filed with their permit application so that Metro Transit may review and approve the design.

GENERAL OR STANDARD REVIEW COMMENTS

In addition, we offer the following General or Standard Review Comments:

4. Metro Transit operates service seven days a week along Odana Road past these bus stop locations.

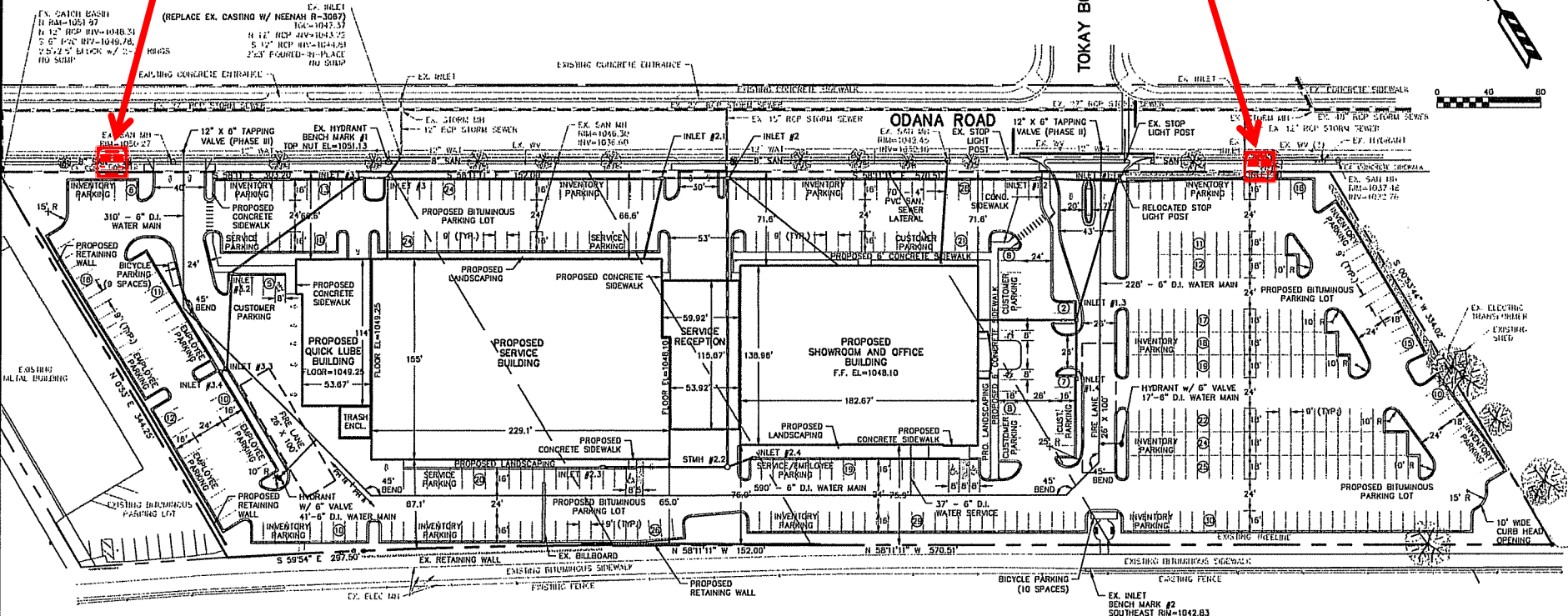
Please contact Tim Sobota, Metro Transit at 261-4289
or by email at <tsobota@cityodmadison.com>
if you have questions regarding the above items.

CC: Project contact person, Jim Triatik: jim@kfsullivan.com (email)
Atch. Exhibit page “SP-2 Proposed Site and Utility Plan” [7/11/2006], notated with approximate amenity locations

M ENGINEERING, LLC 4893 Larson Beach Road, McFarland, WI 53558 (608) 838-7750
 7/11/2006 10:47:04 S255BASE Site&Utility (1) Copyright 2005 Kenneth Sullivan Company
 DWG: S255BASE.DWG

Bus pad #2

Bus pad #1



PARKING LOT PLAN SITE INFORMATION BLOCK		
Site Address	3901 ODANA ROAD	
Site acreage (total)	3.38 ACRES	
Number of building stories (above grade)	1 ± DEPENDS AHEAD SIGNATION	
Building height	20'-0"	
BLR#	Type of construction (see drawings or sections) JD	
Total square footage of building	23,532 sq. ft.	
Use of property	CAR DEALERSHIP	
Street square feet of site	114	
Street square feet of retail area	30,000 sq. ft.	
Number of employees in warehouse	30	
Number of employees in production	30	
Capacity of restaurant/office of capacity	30	
Number of bicycle stalls shown	10	
Number of Parking stalls:		
Service cars	50	Comments
Service employees	10	10 BAYS @ 2 CARS / BAY
Service manager	1	5 employees / service bay
Office / retail area	60	1 area / 300 sq. ft.
Inventory	355	remainder of stalls

- LEGEND**
- PROPOSED SANITARY SEWER
 - PROPOSED WATER MAIN
 - PROPOSED STORM SEWER
 - ⊕ PROPOSED WATER HYDRANT
 - ⊙ PROPOSED WATER VALVE
 - PROPOSED STORM MANHOLE
 - PROPOSED STORM INLET

TO OBTAIN LOCATION OF PARADIGMS' UNDERGROUND FACILITIES BEFORE YOU DIG IN WISCONSIN
CALL DIGGERS HOTLINE
 1-800-242-8511
TOLL FREE
 (DD FOR THE HEARING IMPAIRED) (608) 542-2289

REVISIONS
 REVISION
 REVISION
 REVISION
 Smart Motors
 Kenneth
 DRAWING NAME
 PROPOSED SITE AND