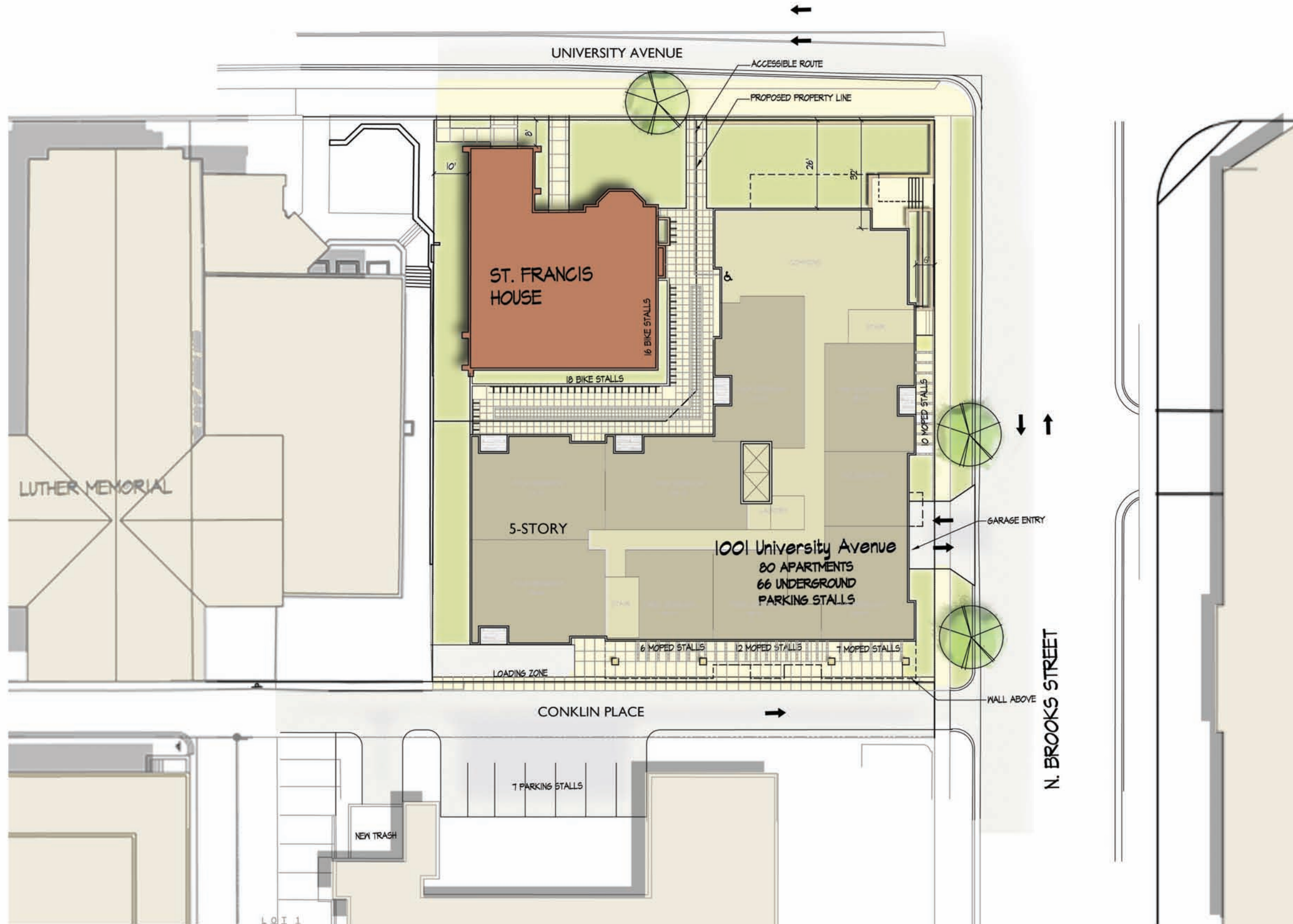
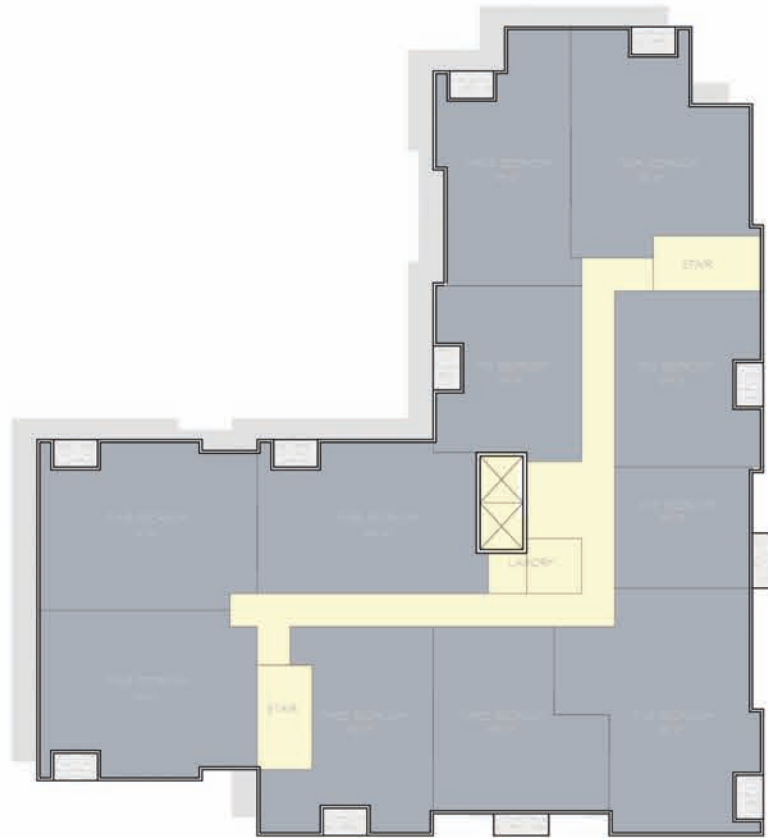


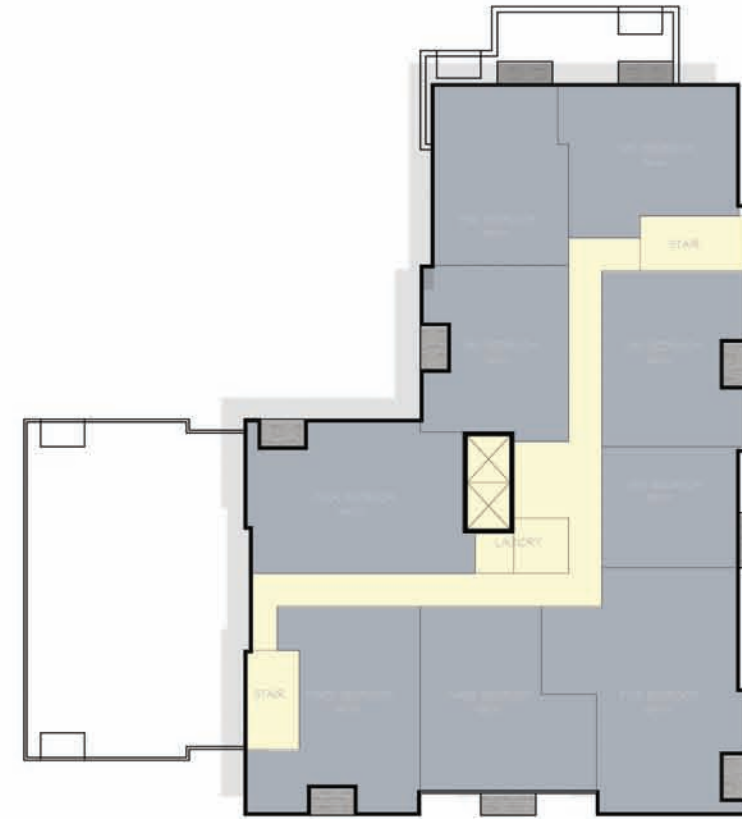
- Project Summary**
- 60 Units
  - 246 Bedrooms
  - 66 Underground Parking Stalls
  - 219 Bike Parking Stalls
  - 61 Moped Stalls



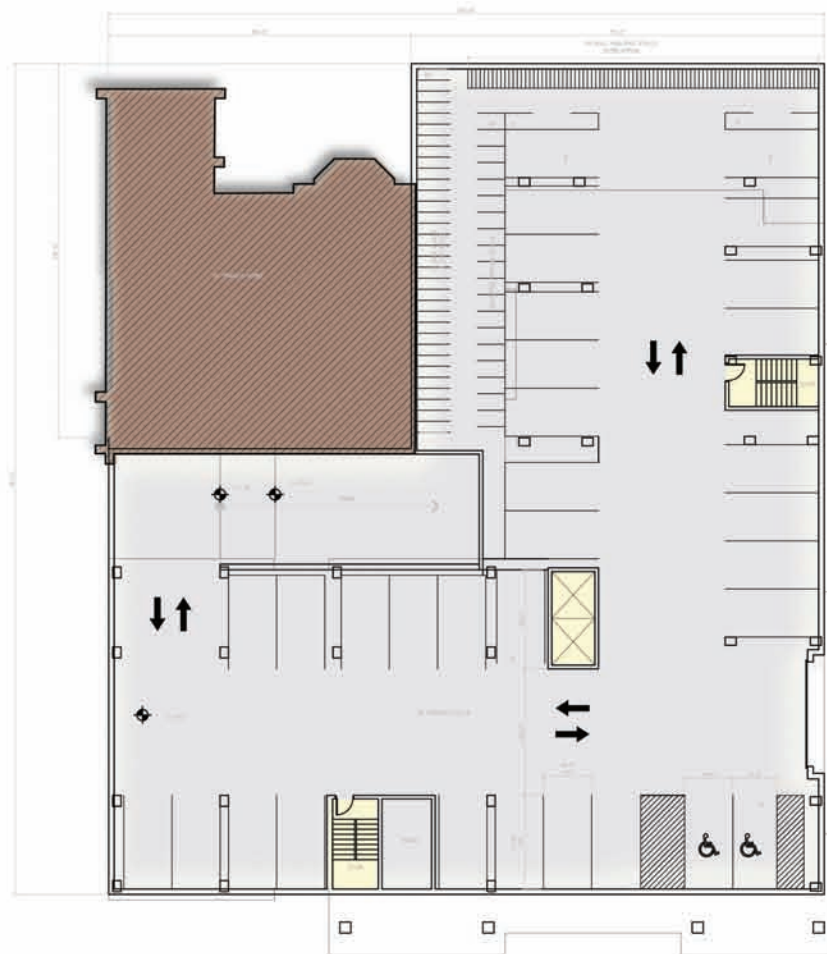
St. Francis Development  
**8 Story Option**  
 Site Plan



Typical Second-Fourth Floor Plan



Typical Sixth-Eighth Floor Plan



Typical Basement Plan



Fifth Floor Plan







Brooks Street Elevation



University Avenue Elevation



Conklin Place Elevation



West Elevation

1001 University  
8 Story Option

**Elevations**

August 22, 2011

**KNOTHE  
& BRUCE**  
*architects*

Project # 1037





University Ave. Street Elevation- 8 Story Option



University Ave Street Elevation-Previous Proposal

St. Francis Development  
**Street Elevations-8 Story Option**

August 22, 2011

**KNOTHE  
& BRUCE**  
*architects*

Project # 1037





St. Francis Development  
**8 Story Option**  
**Perspective #1**



St. Francis Development  
**8 Story Option**  
**Perspective #2**





Shadows affecting Luther Memorial November 1, 8:00am, 10:30am, 12:00pm, 2:00pm, 4:15pm

1001 University  
**Existing Conditions - Sun Study**  
June 29, 2011





Granger Hall Shadow on November 1, 8am

1001 University  
**Existing Conditions - Sun Study**  
June 29, 2011





Luther Memorial Shadow on November 1, 2:00 pm

1001 University  
**Existing Conditions - Sun Study**  
August 24, 2011

**KNOTHE  
& BRUCE**  
*architects*  
Project # 1037





Chemistry Building Shadow on November 1, 4:15pm

1001 University  
**Existing Conditions - Sun Study**  
June 29, 2011

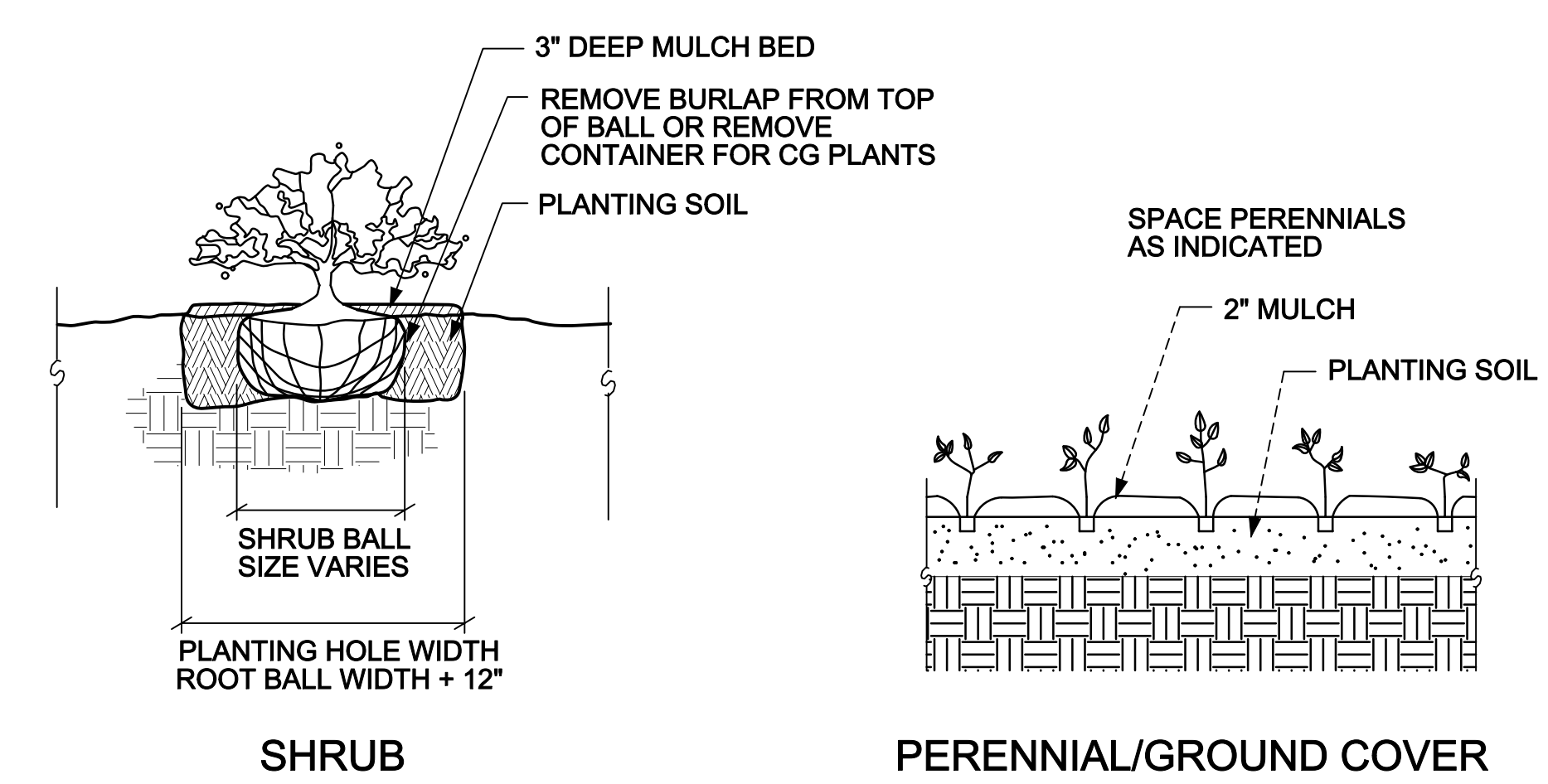


Consultant



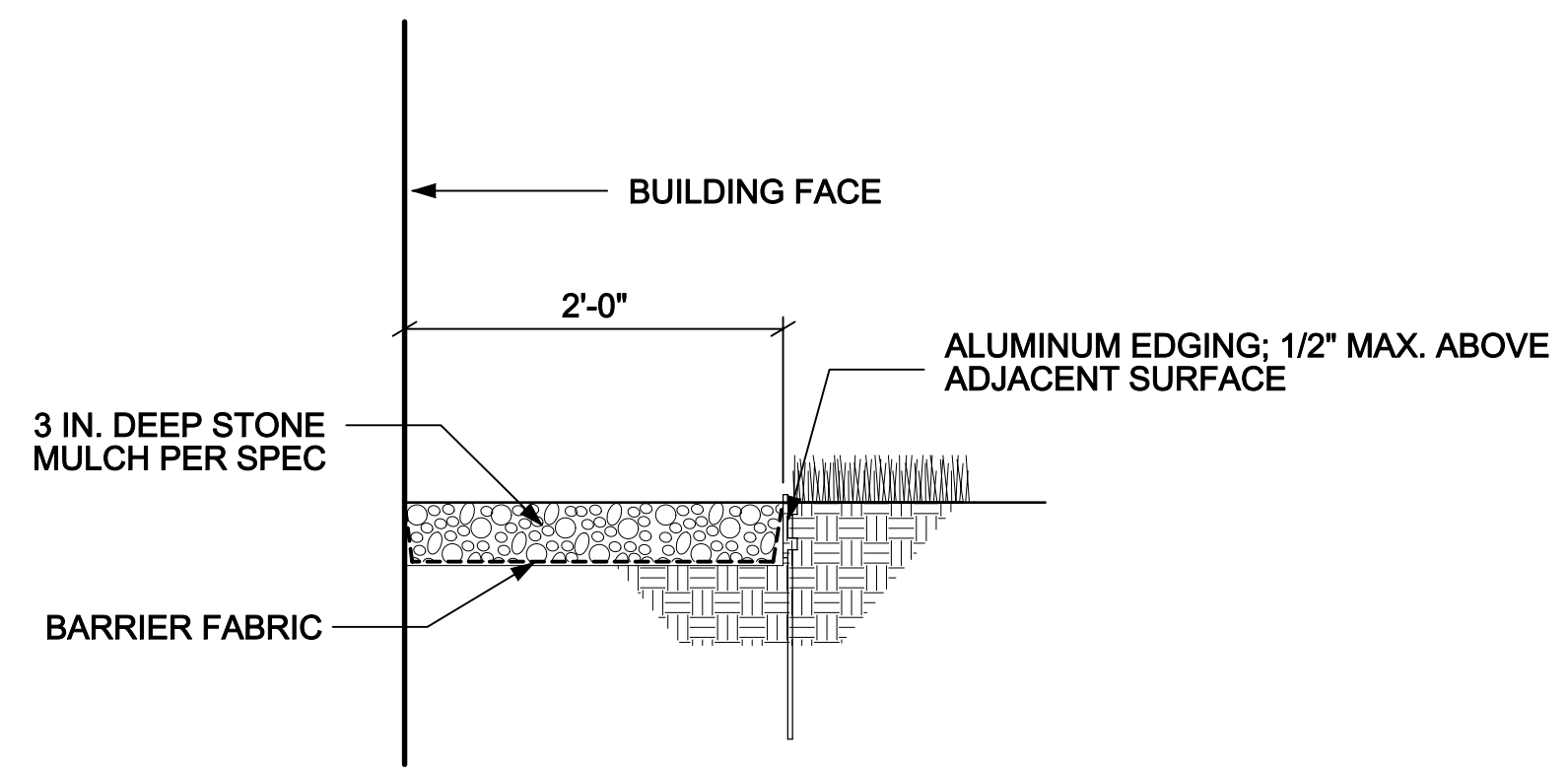
Notes

| PLANT LIST                      |                                                   |                             |      |                 |                    |
|---------------------------------|---------------------------------------------------|-----------------------------|------|-----------------|--------------------|
| Key                             | Botanical Name                                    | Common Name                 | Qty. | Size at Plantng | Comments           |
| <b>Deciduous Shrubs</b>         |                                                   |                             |      |                 |                    |
| Ag                              | <i>Amelanchier x grandiflora</i> 'Princess Diana' | Princess Diana Serviceberry | 2    | 5' Ht/B&B       | shrub form         |
| Am                              | <i>Aronia melanocarpa</i> 'Iroquois Beauty'       | Iroquois Beauty Aronia      | 20   | 18" Ht/Cont     |                    |
| DI                              | <i>Diervilla lonicera</i>                         | Dwarf Bushhoneysuckle       | 22   | 18" Ht/Cont     |                    |
| Hm                              | <i>Heptacodium miconioides</i>                    | Seven Son Flower            | 2    | 5' Ht/B&B       | shrub form         |
| Ha                              | <i>Hydrangea arborescens</i> 'Grandiflora'        | Snowhill Hydrangea          | 4    | 18" Ht/Cont     |                    |
| <b>Evergreen Shrubs</b>         |                                                   |                             |      |                 |                    |
| Tm                              | <i>Taxus x media</i> 'Everlow'                    | Everlow Yew                 | 35   | 24" Spd./Cont   |                    |
| <b>Perennials/Ground Covers</b> |                                                   |                             |      |                 |                    |
| ac                              | <i>Asarum canadense</i>                           | Wild Ginger                 | 415  | 2" pot          | space 12" oncenter |
| cr                              | <i>Cimicifuga racemosa</i> 'Brunette'             | Brunette Snakeroot          | 8    | 1 gal. pot      |                    |
| er                              | <i>Epimedium rubrum</i>                           | Red Barrenwort              | 17   | 2" pot          | space 12" oncenter |
| hj                              | <i>Hosta x June</i>                               | June Hosta                  | 16   | 1 gal. pot      |                    |

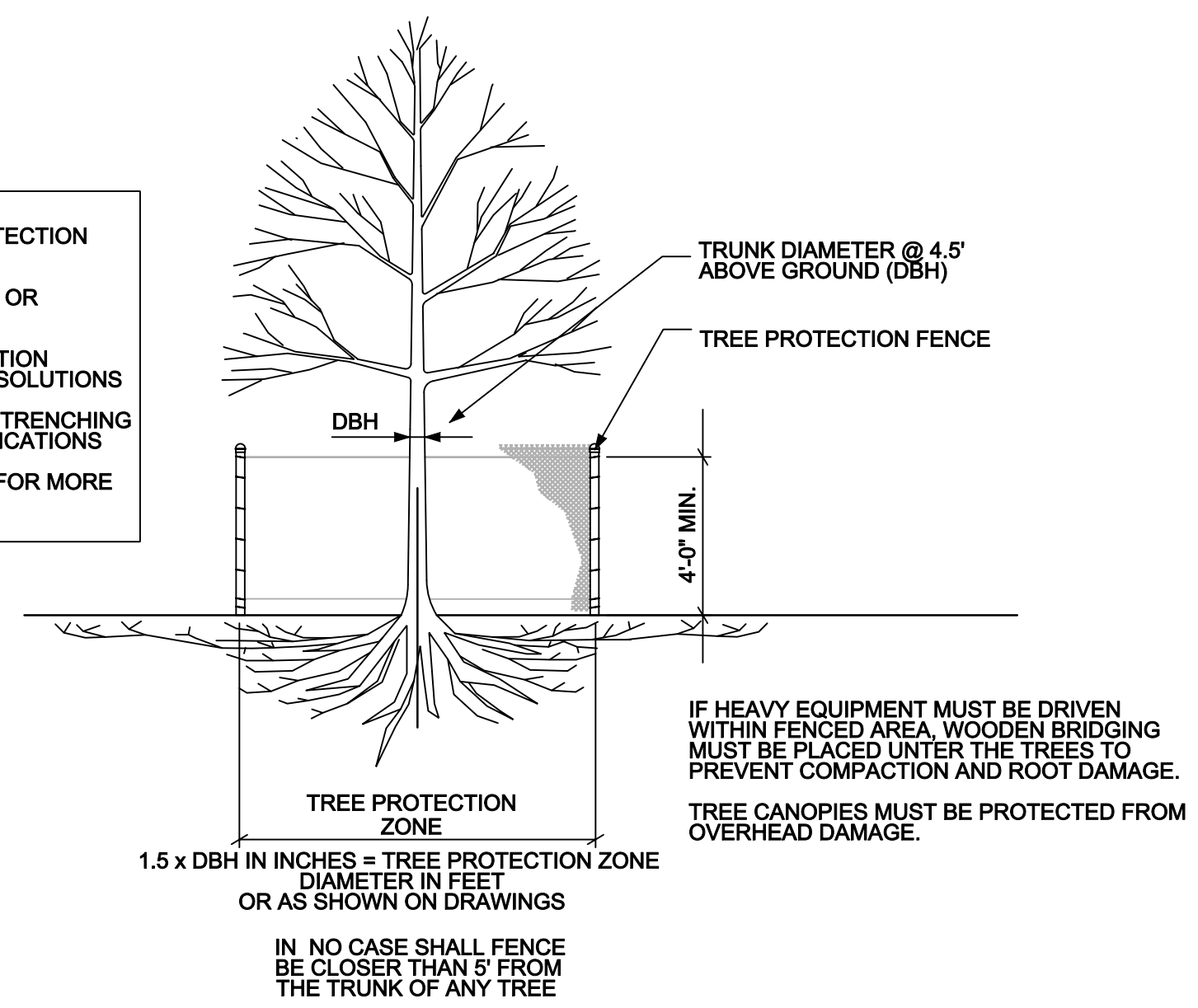


### 1 PLANT SCHEDULE NO SCALE

### 2 TYPICAL PLANTING DETAILS NO SCALE



**PROHIBITED WITHIN TREE PROTECTION ZONE:**  
 1. NO CONSTRUCTION STAGING OR MATERIALS STORAGE  
 2. NO DISPOSAL OF CONSTRUCTION MATERIALS, BYPRODUCTS, OR SOLUTIONS  
 3. GRADING, EXCAVATION, AND TRENCHING ONLY AS DESCRIBED IN SPECIFICATIONS  
 4. SEE SPEC SECTION 31-13-16 FOR MORE INFORMATION



### 3 STONE MAINTENANCE EDGE 1'-1'-0"

### 4 TREE PROTECTION DETAIL 1/4'-1'-0"

Revisions

- City Plan Review - April 20, 2011
- UDC Review - August 31, 2011

Project Title  
1001 University Avenue

1001 UNIVERSITY AVE.  
Drawing Title  
Plant Schedule

Project No. Drawing No.  
1037 L-1.2

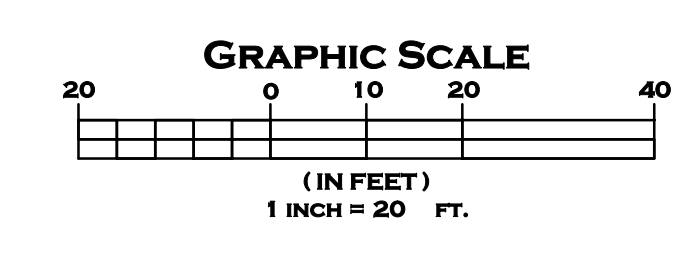
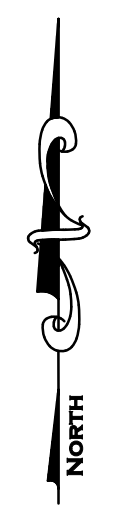
This document contains confidential or proprietary information of Knothe & Bruce Architects. Neither the document nor the information herein is to be reproduced, distributed, used, or disclosed, either in whole or in part, except as specifically authorized by Knothe & Bruce Architects. Knothe & Bruce Architects is a Limited Liability Company of Wisconsin.



Consultant



Notes



Revisions

- City Plan Review - April 20, 2011
- UDC Review - August 31, 2011

Project Title

1001 University Avenue

1001 UNIVERSITY AVE.

Drawing Title

Site Planting Plan

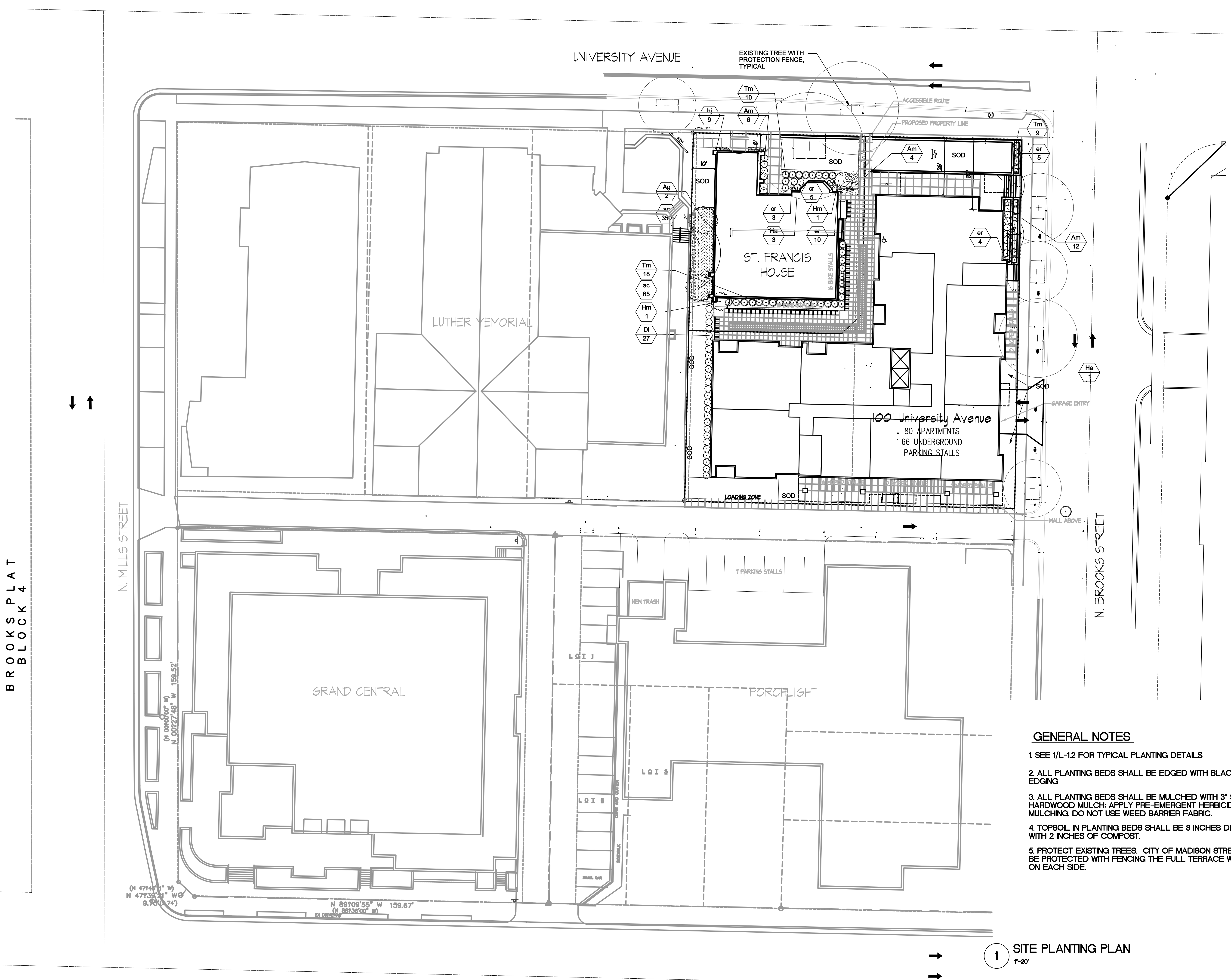
Project No.

1037

Drawing No.

L-1.1

This document contains confidential or proprietary information of Knothe & Bruce Architects. Neither the document nor the information herein is to be reproduced, distributed, used, or disclosed, either in whole or in part, except as specifically authorized by Knothe & Bruce Architects. Knothe & Bruce Architects is a Limited Liability Company of Wisconsin.



### GENERAL NOTES

1. SEE 1/L-12 FOR TYPICAL PLANTING DETAILS
2. ALL PLANTING BEDS SHALL BE EDGED WITH BLACK ALUMINUM EDGING
3. ALL PLANTING BEDS SHALL BE MULCHED WITH 3" SHREDDED HARDWOOD MULCH; APPLY PRE-EMERGENT HERBICIDE PRIOR TO MULCHING. DO NOT USE WEED BARRIER FABRIC.
4. TOPSOIL IN PLANTING BEDS SHALL BE 8 INCHES DEEP AND AMENDED WITH 2 INCHES OF COMPOST.
5. PROTECT EXISTING TREES. CITY OF MADISON STREET TREES SHALL BE PROTECTED WITH FENCING THE FULL TERRACE WIDTH AND 5'-0" MIN ON EACH SIDE.

1 SITE PLANTING PLAN  
1"=20'