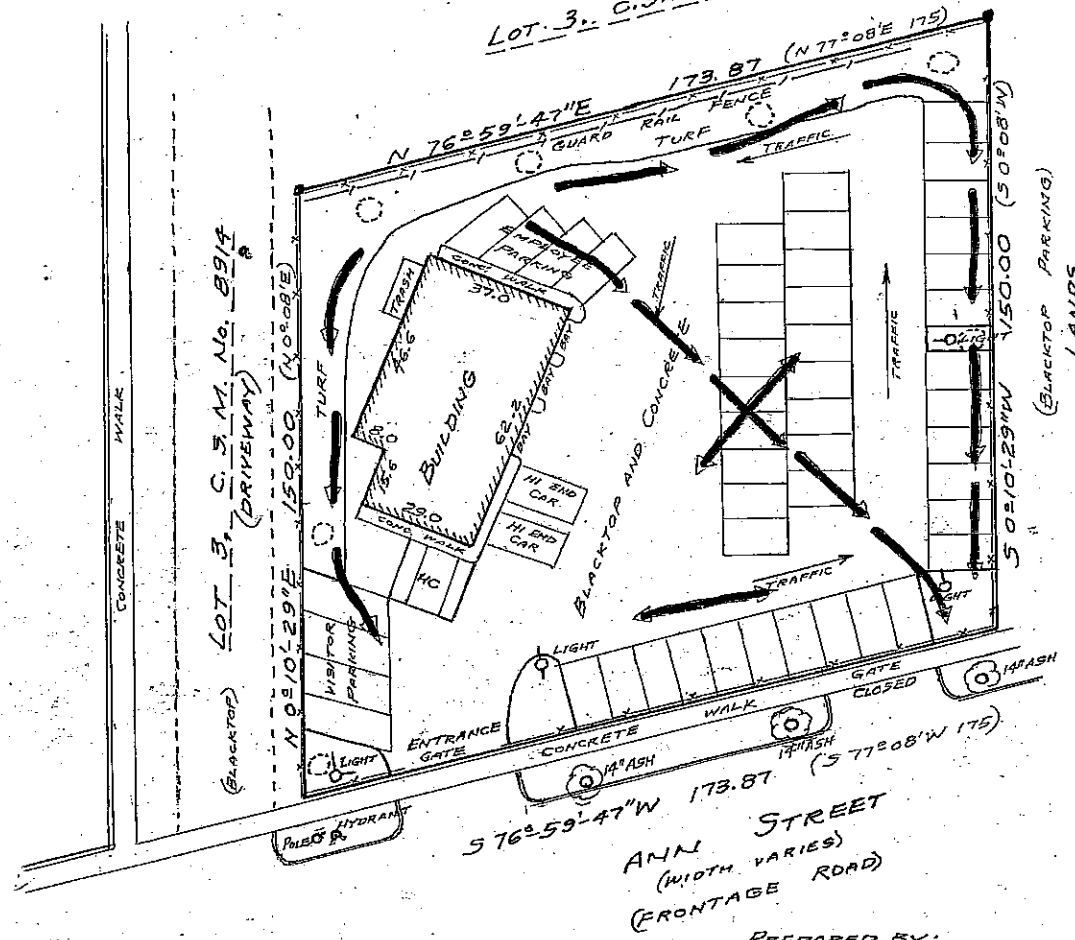
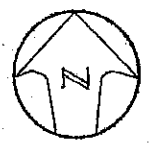


LOT 3, C.S.M. No. 8914

LEGAL DESCRIPTION
 SEC 35 T7N R9E PART N 1/2 SW 1/4, B8G NE
 COR SW 1/4 SD SEC, TH N 89 DEG 29 MIN 2
 2 SEC W ALONG N LN SD 1/4 680.85 FT TO C
 /L PERRY ST, TH S 0 DEG 05 MIN W ALG SD
 C/L 785.4 FT, TH N 89 DEG 21 MIN W581.5
 FT, TH S 0 DEG 08 MIN W236.75 FT TO POB
 , TH S 0 DEG 08 MIN W150 FT TO N LN ANN
 ST, TH S 77 DEG 08 MIN W175 FT, TH N 0 D
 EG 08 MIN W150 FT, TH N 77 DEG 08 MIN E1
 75 FT TO POB



PARKING LOT PLAN
1010 ANN STREET
 CITY OF MADISON, DANE CO., WI.

SCALE 1" = 30'

- LEGEND**
- DENOTES IRON STAKE FOUND
 - x—x— DENOTES 8 FT. CHAIN LINK FENCE
 - () DENOTES RECORDED AS PARKING SPACE SIZES
 - VISITOR 5' EMPLOYEE 5' HC 8 FT X 16 FT
 - VEHICLES FOR SALE 9 FT. X 16 FT.
 - DENOTES PROPOSED 2" TREE
 - FOR SECTION CORNER TIE SEE C.S.M. #8914
 - HC DENOTES HANDICAPPED PARKING
 - DENOTES DIRECTION OF DRAINAGE

ANN STREET
 (WIDTH VARIES)
 (FRONTAGE ROAD)

PREPARED BY:
 DAVID R. CHENEY PE/RLS
 404 S. BROUNT ST. SUITE 203
 MADISON, WI 53703
 608-287-0003

