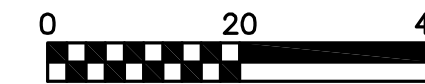
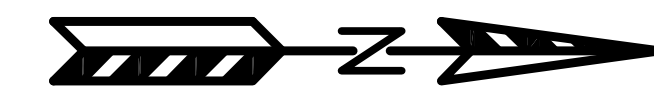


1019 JONATHON DRIVE
 EXISTING SITE PLAN
 EXHIBIT #1
 DATED: AUGUST 19, 2013

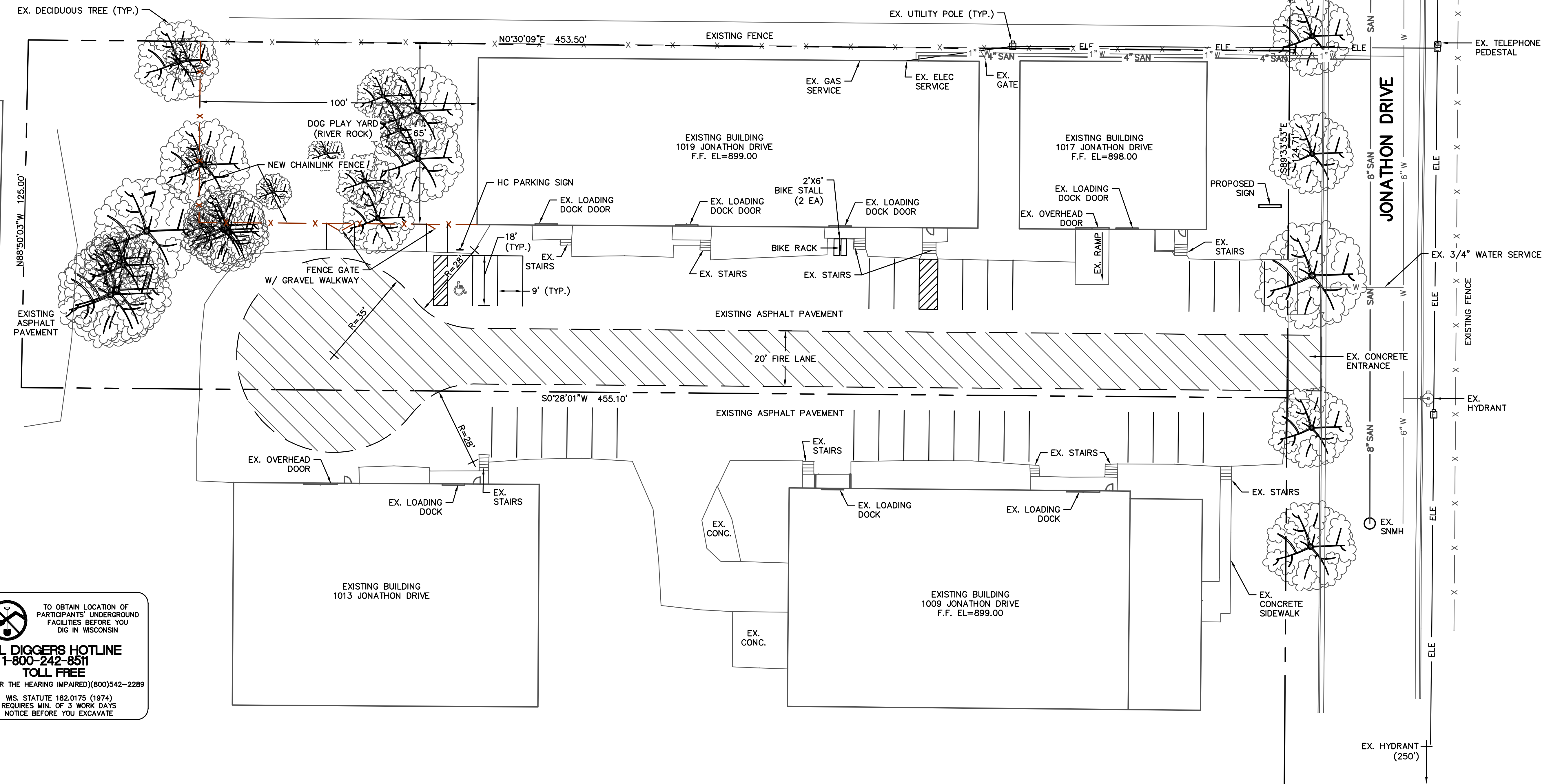
QUAM ENGINEERING, LLC
 Residential and Commercial Site Design Consultants

www.quamengineering.com

4893 Larson Beach Road; McFarland, Wisconsin 53558
 Phone (608) 838-7750; Fax (608) 838-7752



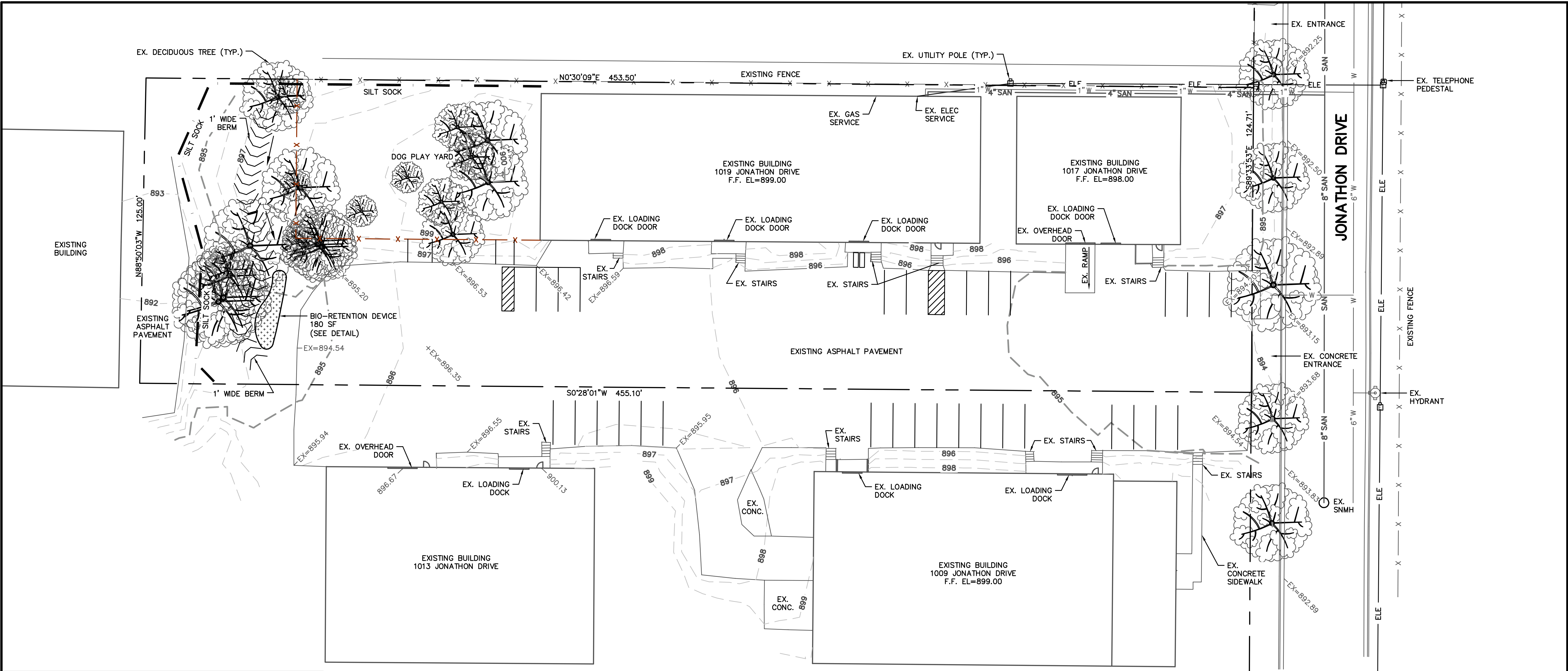
 TO OBTAIN LOCATION OF PARTICIPANTS' UNDERGROUND FACILITIES BEFORE YOU DIG IN WISCONSIN
CALL DIGGERS HOTLINE
1-800-242-8511
TOLL FREE
 TDD(FOR THE HEARING IMPAIRED)(800)542-2289
 WIS. STATUTE 182.0175 (1974)
 REQUIRES MIN. OF 3 WORK DAYS
 NOTICE BEFORE YOU EXCAVATE



1019 JONATHON DRIVE
 UTILITY AND FIRE LANE PLAN
 EXHIBIT #3
 DATED: AUGUST 20, 2013

QUAM ENGINEERING, LLC
 Residential and Commercial Site Design Consultants
 www.quamengineering.com
 4893 Larson Beach Road; McFarland, Wisconsin 53558
 Phone (608) 838-7750; Fax (608) 838-7752





EROSION NOTES:

SEDIMENT REACHING THE PUBLIC ROAD SHALL BE REMOVED BY STREET CLEANING (NOT HYDRAULIC FLUSHING) BEFORE THE END OF EACH WORKDAY.

EROSION CONTROL DEVICES SHALL BE INSTALLED PRIOR TO GRADING OPERATIONS AND SHALL BE PROPERLY MAINTAINED FOR MAXIMUM EFFECTIVENESS UNTIL VEGETATION IS ESTABLISHED. ALL EROSION CONTROL MEASURES AND STRUCTURES SERVING THE SITE MUST BE INSPECTED AT LEAST WEEKLY OR WITHIN 24 HOURS OF A 0.5 INCH RAIN EVENT. ALL MAINTENANCE WILL FOLLOW AN INSPECTION WITHIN 24 HOURS.

CUT AND FILL SLOPES SHALL BE NO GREATER THAN 3:1.

EROSION CONTROL IS THE RESPONSIBILITY OF THE CONTRACTOR UNTIL ACCEPTANCE OF THIS PROJECT. EROSION CONTROL MEASURES AS SHOWN SHALL BE THE MINIMUM PRECAUTIONS THAT WILL BE ALLOWED. THE CONTRACTOR SHALL BE RESPONSIBLE FOR RECOGNIZING AND CORRECTING ALL EROSION CONTROL PROBLEMS THAT ARE A RESULT OF CONSTRUCTION ACTIVITIES. ADDITIONAL EROSION CONTROL MEASURES, AS REQUESTED IN WRITING BY THE STATE OR LOCAL INSPECTORS, OR THE DEVELOPER'S ENGINEER, SHALL BE INSTALLED WITHIN 24 HOURS.

TIME SCHEDULE:

OCTOBER 1, 2013 INSTALL INITIAL EROSION CONTROL DEVICES.

OCTOBER 1 - 15, 2013 GRADE DOG PLAY YARD, STRIPE PARKING LOT, RESTORE PVIOUSLY DISTURBED AREAS AND CONSTRUCT BIO-RETENTION DEVICE.

RESTORATION NOTES:

ALL PVIOUSLY DISTURBED AREAS SHALL RECEIVE A MINIMUM OF FOUR (4) INCHES OF TOPSOIL, SEED AND MULCH. ALL PVIOUSLY DISTURBED AREAS SHALL RECEIVE FERTILIZER EXCEPT NATIVE PLANTING AREAS. RESTORATION WILL OCCUR AS SOON AFTER THE DISTURBANCE AS PRACTICAL. SEED MIXTURE 40 SHALL BE USED ON ALL OTHER DISTURBED AREAS. MIXTURES SHALL BE IN ACCORDANCE WITH SECTION 630 OF D.O.T. SPECIFICATIONS. AN EQUAL AMOUNT OF ANNUAL RYEGRASS SHALL BE ADDED TO THE MIX.

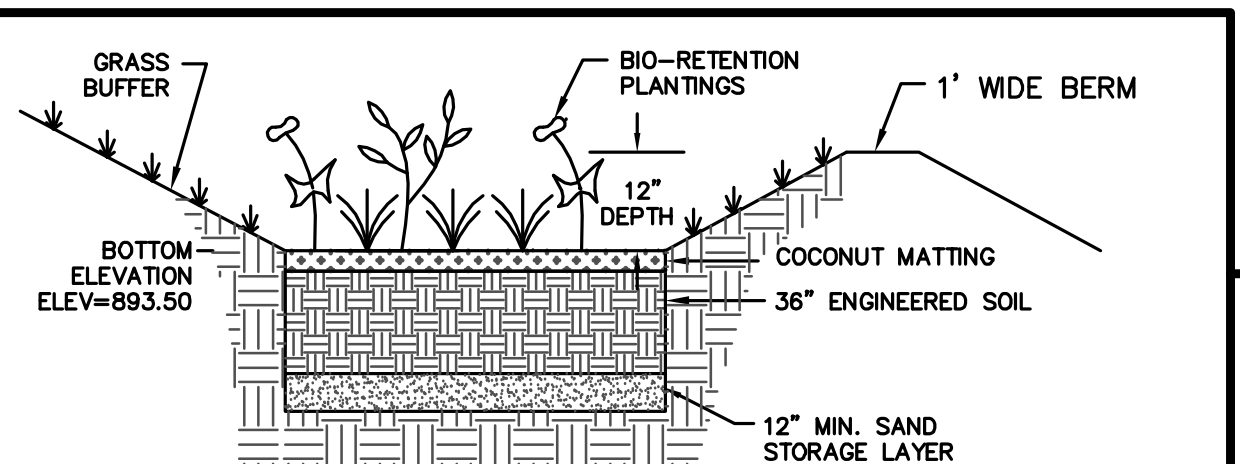
SEED MIXTURES SHALL BE APPLIED AT THE RATE OF FOUR (4) POUNDS PER 1,000 SQUARE FEET. FERTILIZER SHALL BE APPLIED AT THE RATE OF FOUR (4) POUNDS PER 1,000 SQUARE FEET. MULCH SHALL CONSIST OF HAY OR STRAW APPLIED AT THE RATE OF 2 TONS PER ACRE.

FERTILIZER SHALL MEET THE MINIMUM REQUIREMENTS THAT FOLLOW: NITROGEN, NOT LESS THAN 16%; PHOSPHORIC ACID, NOT LESS THAN 8%; POTASH, NOT LESS THAN 8%.

OWNER: RAPID SALES PLUS, LLC
ATTN: GREG LYSTER
4085 N 137TH STREET
BROOKFIELD, WI 53005

TENANT: TWO BROWN TAILS, LLC
ATTN: LAURA SCHORRAK
2821 INDEX ROAD
MADISON, WI 53713

ENGINEER: QUAM ENGINEERING, LLC
ATTN: RYAN QUAM
4604 SIGGELKOW ROAD, SUITE A
MCFARLAND, WI 53558

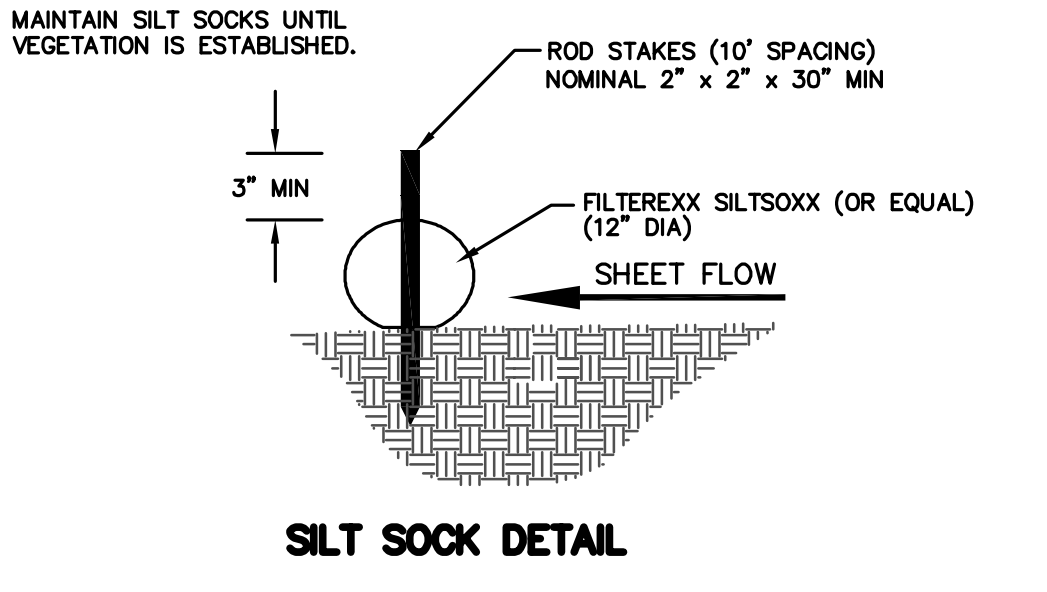


ENGINEERED SOIL SHALL CONSIST OF THE FOLLOWING:
70% SILICA SAND; 30% COMPOST W/ PH 5.5-6.5
COMPOST SHALL MEET WQNR SPECIFICATION S100.
STORAGE/INTERFACE LAYER SHALL CONSIST OF SAND AS FOLLOWS:
SAND: WASHED QUARTZ OR SILICA 0.02 - 0.04 INCHES IN DIA.

BIORETENTION PLANTINGS TO BE PLANTED AT ONE PLUG PER SQUARE FOOT. PLUGS TO BE PLANT STOCK NAMED IN THE WET PRAIRIE SHORT STATURE MIX FROM AGRECOLD CORPORATION OR APPROVED EQUIVALENT. A MINIMUM OF 10 DIFFERENT PLANT STOCK NAMES TO BE PLANTED.

TO PREVENT COMPACTION OF ENGINEERED SOIL AND SUBSOILS, CONTRACTOR SHALL PROTECT AGAINST MACHINERY ENTERING OR COMPACTING THE BIO-RETENTION AREA.

BIORETENTION DETAIL

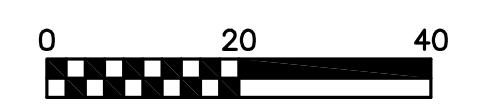


TO OBTAIN LOCATION OF PARTICIPANTS' UNDERGROUND FACILITIES BEFORE YOU DIG IN WISCONSIN

CALL DIGGERS HOTLINE
1-800-242-8511
TOLL FREE

TDD(FOR THE HEARING IMPAIRED)(800)542-2289

WIS. STATUTE 182.0175 (1974)
REQUIRES MIN. OF 3 WORK DAYS
NOTICE BEFORE YOU EXCAVATE



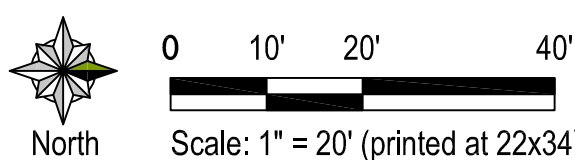
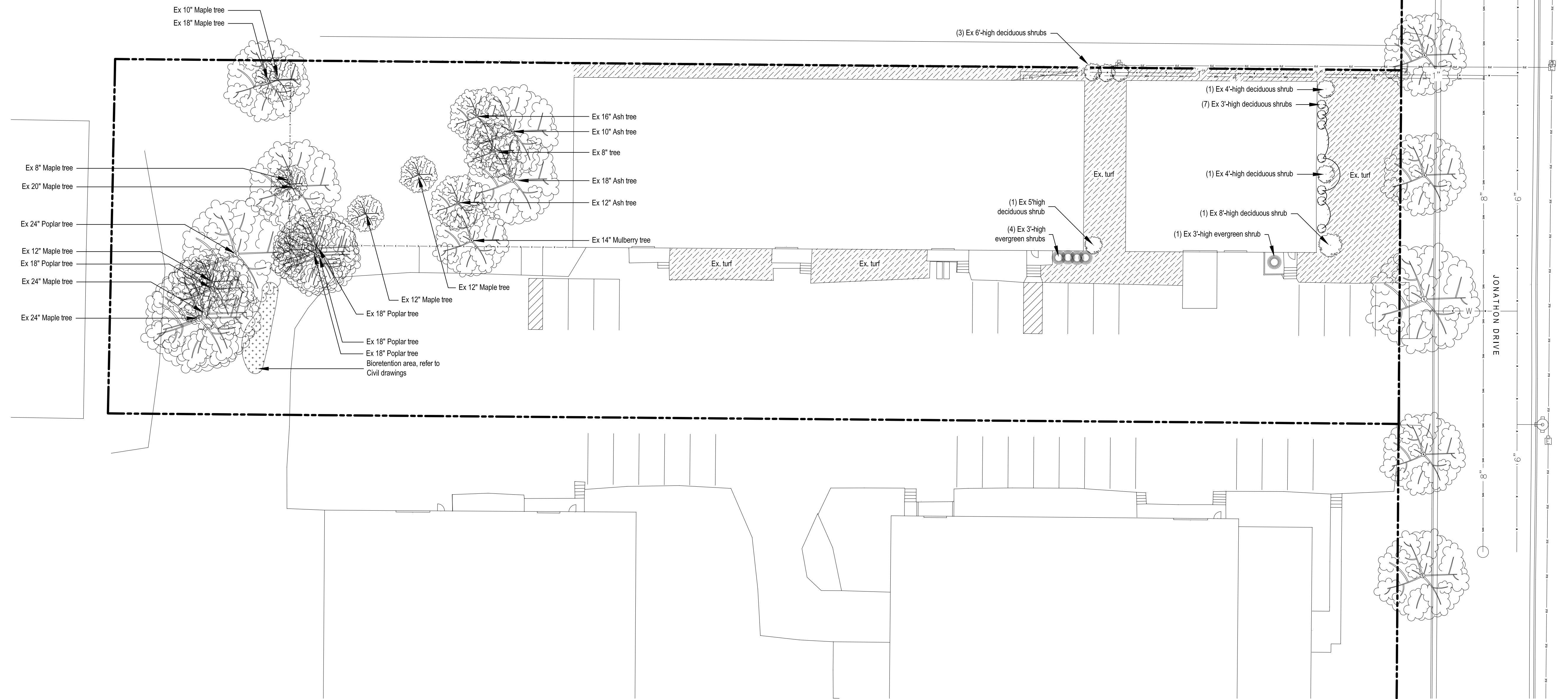
→ = DRAINAGE ARROW

1019 JONATHON DRIVE
GRADING AND EROSION CONTROL PLAN
EXHIBIT #2
DATED: AUGUST 19, 2013

QUAM ENGINEERING, LLC
Residential and Commercial Site Design Consultants

www.quamengineering.com

4893 Larson Beach Road; McFarland, Wisconsin 53558
Phone (608) 838-7750; Fax (608) 838-7752



GENERAL LANDSCAPE & PLANTING NOTES

1. Plant material to be installed and maintained by a qualified and experienced landscape installer.
2. Verify all utility locations in the field prior to beginning work. Repair all damaged utilities to satisfaction of the Owner and Operating Authority at no additional cost.
3. Install all plant material in accordance with all local codes and ordinances. Obtain any required permits necessary to complete work. All workmanship and materials shall be guaranteed by the Contractor for a period of one (1) calendar year after Final Acceptance.
4. Maintain all new lawn and plant material for a three (3) month period from date of Substantial Completion. Maintenance shall include pruning, cultivating, watering, weeding, fertilizing, restoring plant saucers, spraying for disease and insects, and replacing tree wrappings. Recommended long-term maintenance procedures shall be provided to the Owner before expiration of this period.
5. Recondition soil and seed/re-seed all areas disturbed by construction activities that are not to receive other surface treatment (i.e. pavement, planting bed, etc.). Seed with WIDOT 40 or equal.

CITY OF MADISON LANDSCAPE POINT SCHEDULE

NUMBER OF POINTS REQUIRED				
Total square footage of developed area	56,831			
Landscape Units = Total SF of developed area divided by 600 SF (zoned IL)	95			
Total points required = Landscape units x 5	475			
TABULATION OF POINTS & CREDITS	Credits/Existing		New/Proposed	
	Qty	Pts	Qty	Pts
Canopy Trees (min 2.5" caliper) @ 35 pts ea.	20	700		
Canopy or Small Trees (1.5" caliper) @ 15 pts ea.				
Evergreen Trees (min 3' height) @ 15 pts ea.				
Evergreen shrubs (min 18" ht or 3 gal) @ 3 pts ea.	5	15		
Deciduous shrubs (min 18" ht or 3 gal) @ 2 pts ea.	14	28		
Ornamental grasses (min 18" ht or 3 gal) @ 2 pts ea.				
Decorative fence @ 4 points / 10 linear feet				
Subtotals		743		
Total proposed landscape points achieved				743

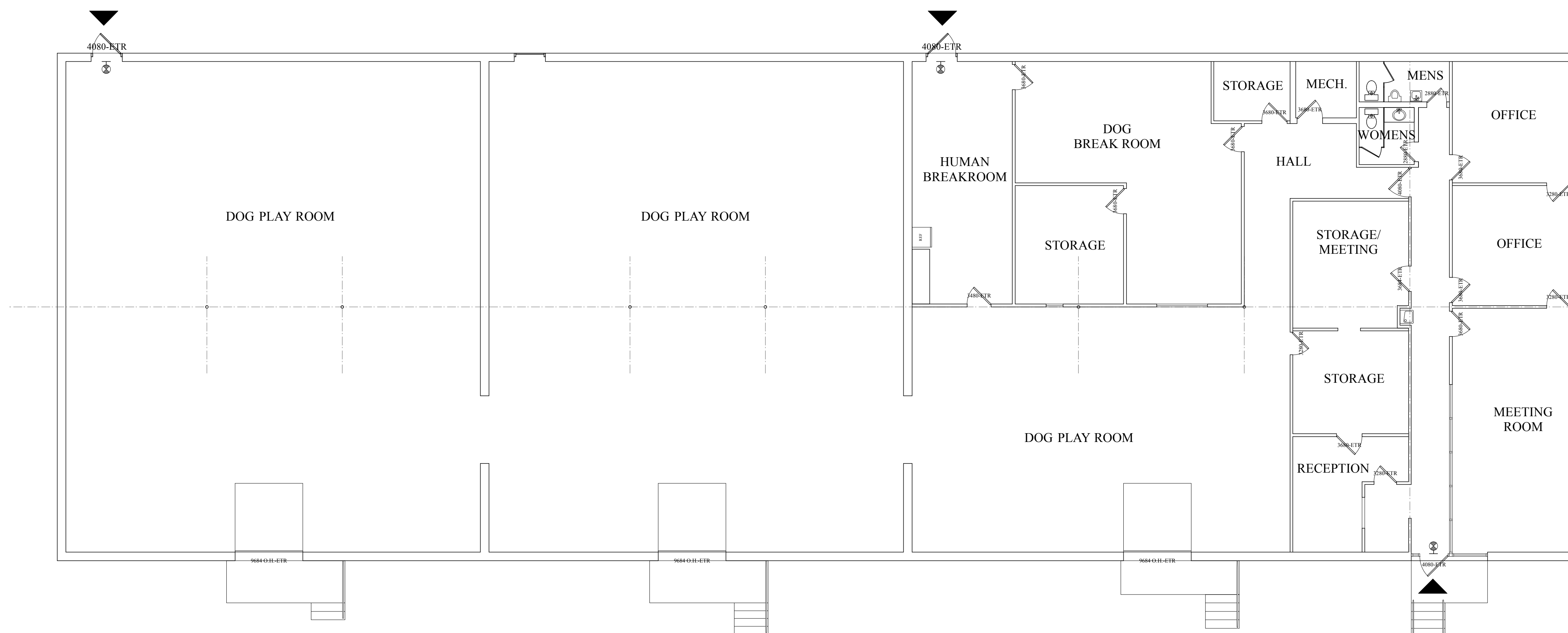
Revision	Date	Description

Issued for:	Approval
Issue Date:	2013-08-21
Job No:	2013-043
Drawn by:	ASA

© 2013 Plandscape LLC.
All rights reserved.
These Drawings and Specifications, and all copies thereof are and shall remain the property and copyright of the Landscape Architect. They shall be used only with respect to this project and are not to be used on any other project or work without prior written permission from the Landscape Architect.

Stamp:

ALL WALLS, DOORS, BUILDING FEATURES SHOWN ARE EXISTING TO REMAIN UNLESS NOTED OTHERWISE.



1 FIRST FLOOR PLAN
A1.1 Scale: 1/8" = 1'-0"

- ISSUE:
- CONSTRUCTION SET**
 - PLAN REVIEW SET**
 - BID SET**
NOT FOR CONSTRUCTION
 - PRELIMINARY**
NOT FOR CONSTRUCTION
 - PROGRESS SET**
NOT FOR CONSTRUCTION

PROJECT:
**Conditional Use For
the new location of
THE DOG DEN**

1019 Jonathon Drive
Madison, Wisconsin

REVISIONS:

DATE: 6 AUG 2013
SCALE: as noted; 50% @ 11x17
PROJECT: K1301.17
DRAWN BY: ASH

DRAWING NAME:

FIRST FLOOR PLAN

DRAWING NUMBER:

A-1.1