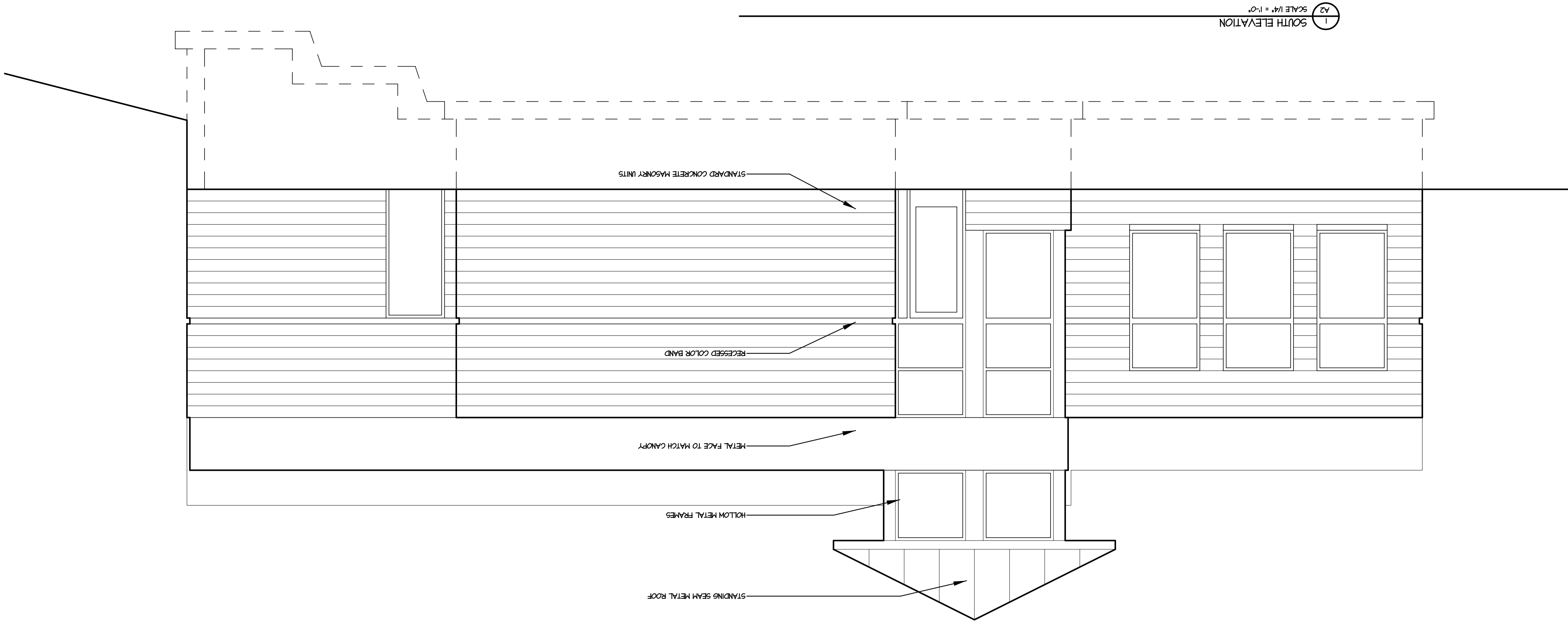
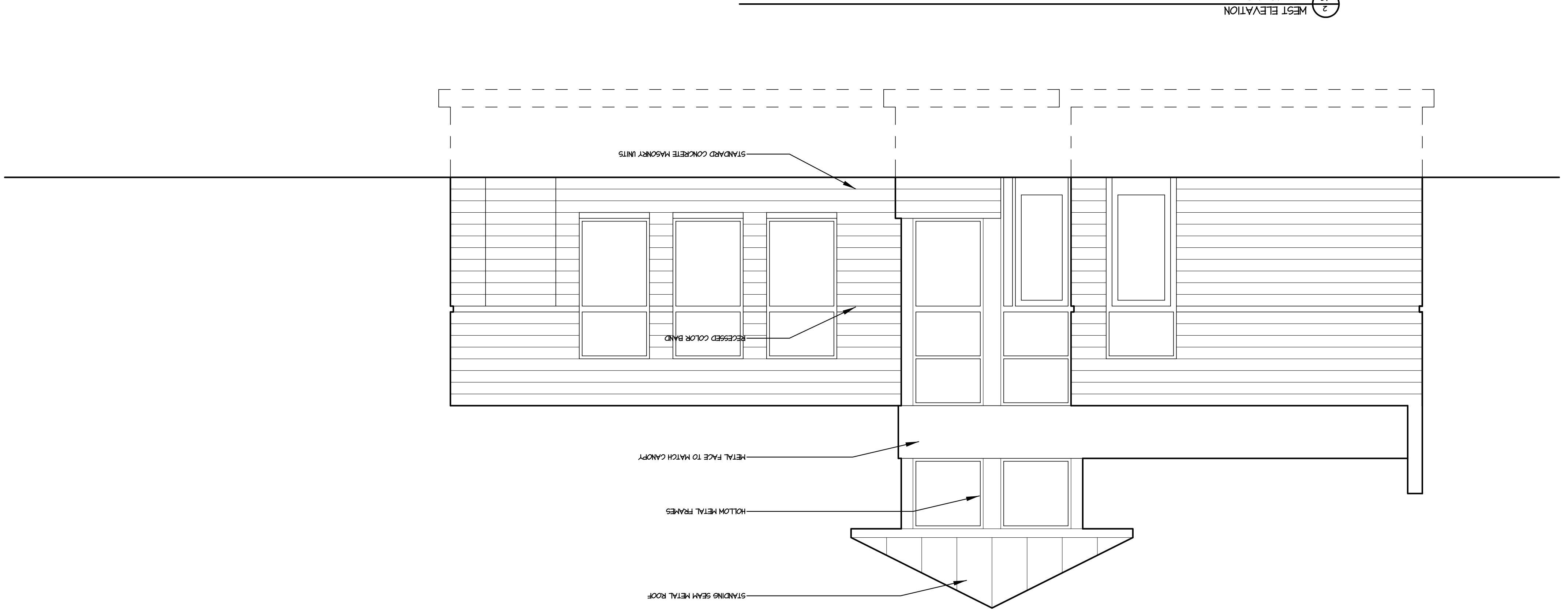
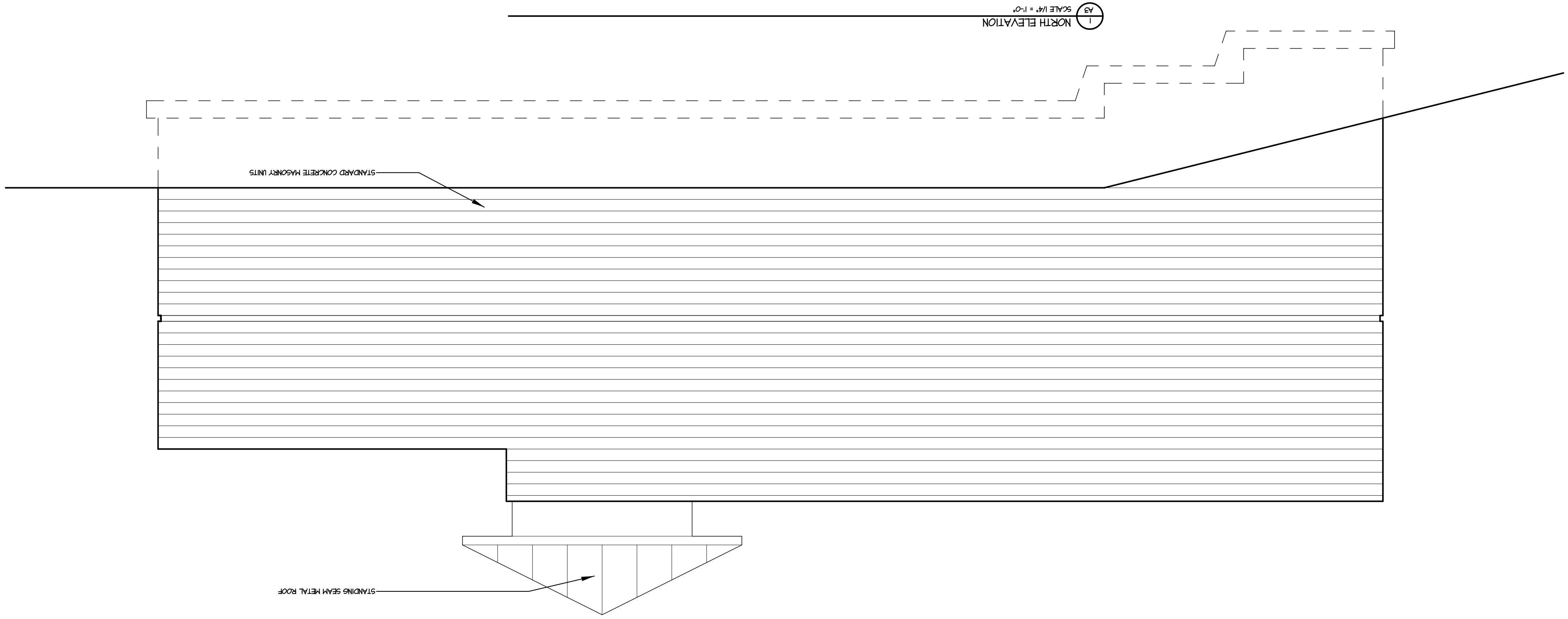
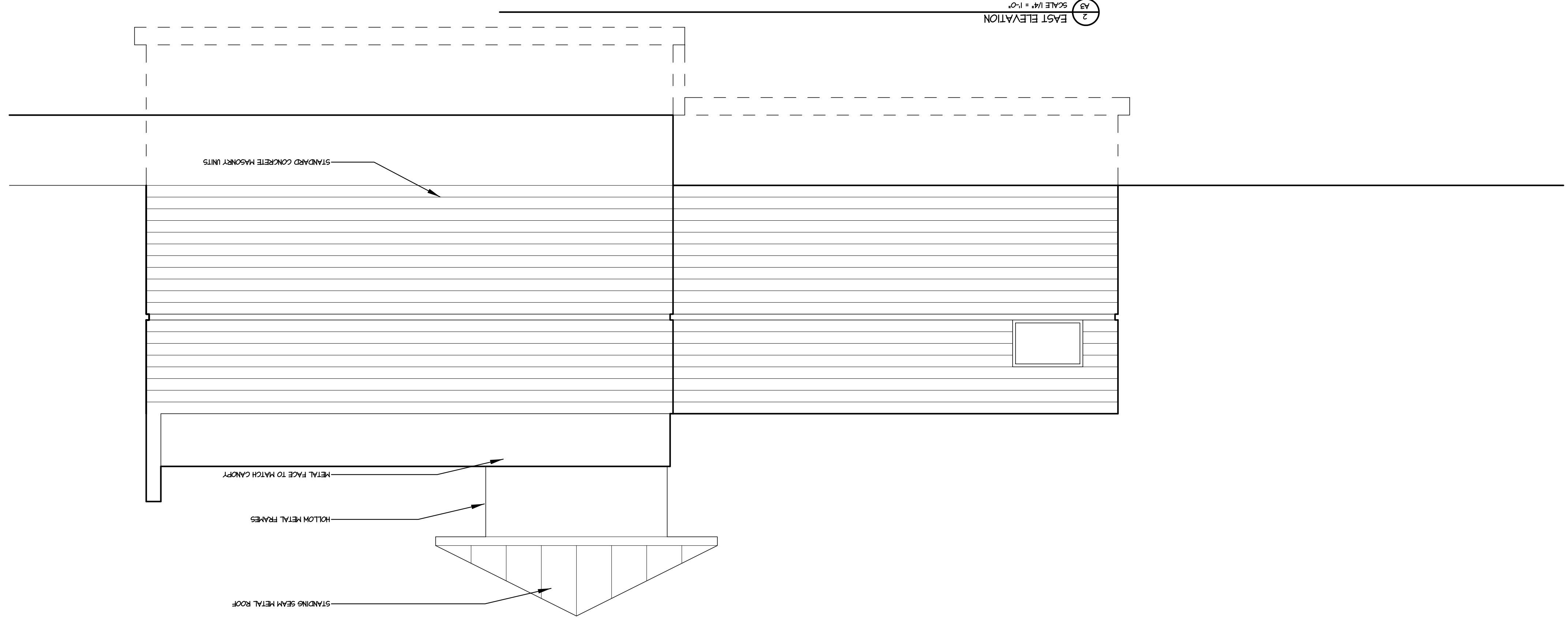


1 FLOOR PLAN  
SCALE 1/4" = 1'-0"  
NORTH





**EROSION CONTROL NOTES**

- 1) INSTALL SILT FENCE AT PERIMETER OF DISTURBED AREA (LESS THAN 4,000 SF).
- 2) KEEP PAVED AREAS FREE OF EXCAVATED MATERIAL.
- 3) IF DEWATERING IS REQ., USE SEDIMENT BAG.
- 4) PROVIDE INLET PROTECTION AT DISCHARGE.
- 5) MAINTAIN MEASURES FOR DURATION OF CONSTRUCTION.

**DEMOLITION NOTES**

- 1) REMOVE BUILDINGS SHOWN HATCHED.
- 2) REMOVE ONLY BITUMINOUS PAVING NOT TO REMAIN PAVED AREA.
- 3) MAINTAIN CONCRETE RETAINING WALL, DRIVEWAY APPROACHES, AND SIDEWALK.
- 4) REPLACE CONCRETE PAD UNDER CANOPY & ISLANDS.
- 5) PROVIDE CONSTRUCTION FENCE AT PERIMETER.
- 6) REMOVE GUARDRAIL ALONG EAST & NORTH PROPERTY LINE.
- 7) REMOVE FREE STANDING SIGN AND CONCRETE FOOTINGS.
- 8) REMOVE ALL CONCRETE SLAB ON PROPERTY.
- 9) REMOVE EXISTING TREE IN NE CORNER.

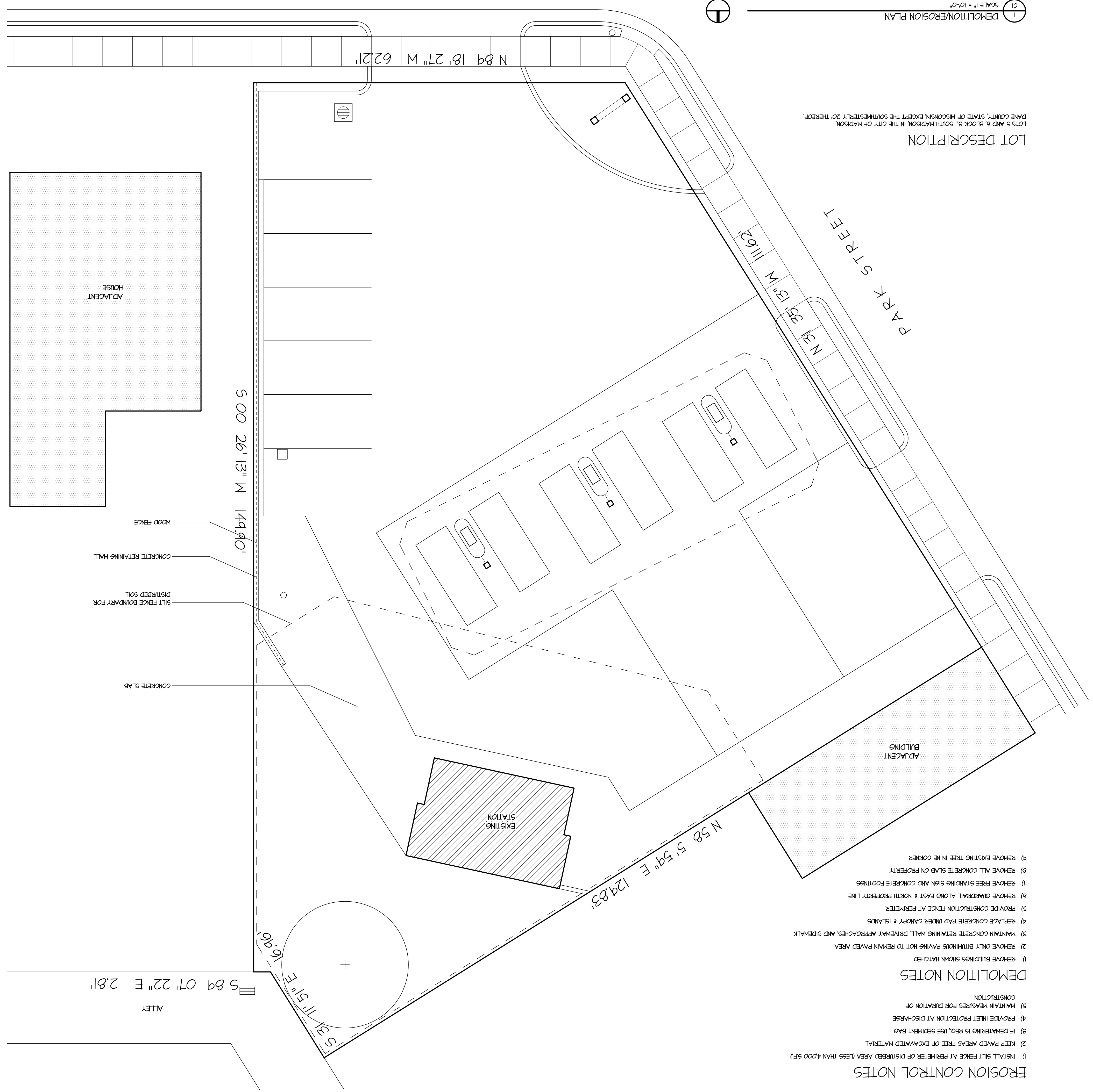
**LOT DESCRIPTION**

LOTS 5 AND 6 BLOCK 3 SOUTH MADISON IN THE CITY OF MADISON, DANE COUNTY, STATE OF WISCONSIN EXCEPT THE SOUTHWESTERLY 20' THEREOF.

1 DEMOLITION/EROSION PLAN  
 1/1 SCALE 1" = 10'-0"



OLIN AVENUE



Drawn by: jws  
 Date: 07/07/07  
 Project #: 20117  
**DATA**

**PROJECT**  
 The Gas Station  
 1129 South Park Street  
 Madison Wisconsin  
**DRAWING**  
 DEMOLITION/EROSION PLAN

**SUTTON ARCHITECTURE**  
 104 King Street  
 Madison, WI 53703  
 Tel: 608-255-1245 Fax: 608-255-0764







LOCATION

PROJECT

Gas Station  
1129 South Park Street

OWNER

Mohammed Ehtasham

1129 South Park Street  
Madison, WI 53715 (414)460-4050

ZONING

SITE DATA

BUILDING SIZE	2,500
CONSTRUCTION TYPE	5B
BUILDING HEIGHT	25 FEET
NUMBER OF STORES	1
OCCUPANCY TYPE	B
CAPACITY	20
LOT SIZE	13,200 SQUARE FEET
PARKING	7
BIKE STALLS	10
PUMPS	3
ZONING	C2

INDEX

T1	TITLE SHEET
C1	SITE SURVEY/DEMOLITION PLAN
C2	SITE PLAN
C3	LANDSCAPE PLAN
C4	UTILITY PLAN
A1	FLOOR PLAN
A2	BUILDING ELEVATIONS
A3	BUILDING ELEVATIONS