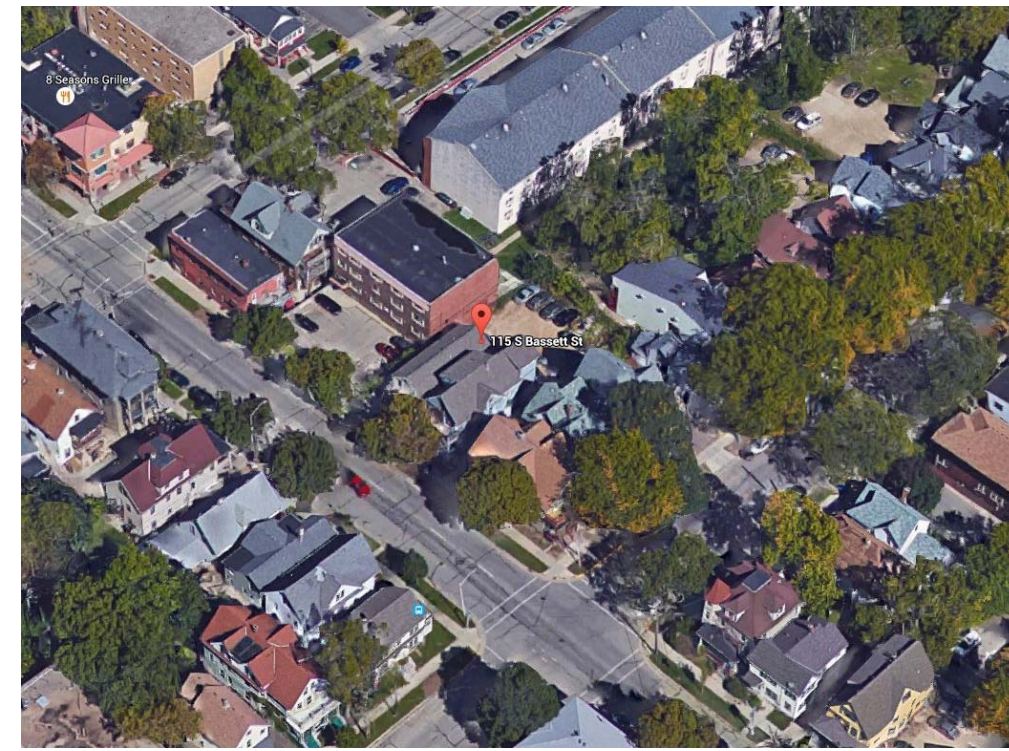






115-117 S. BASSETT STREET



SITE AERIAL



115-117 S. BASSETT STREET



NEIGHBORING PROPERTIES



Brandon Cook  
115-117 South Bassett

115-117 S. Bassett Street  
Madison, WI 53703

No.	Description	Date	Contextual Photos	
			Project number	BRC-15-02
			Date	6/10/2015
			Scale	
			Project Phase	Major Amendment to Approved PD-SIP

T2



115-117 S. BASSETT STREET BACK LOT



115-117 S. BASSETT STREET BACK LOT



115-117 S. BASSETT STREET BACK LOT



115-117 S. BASSETT STREET BACK LOT

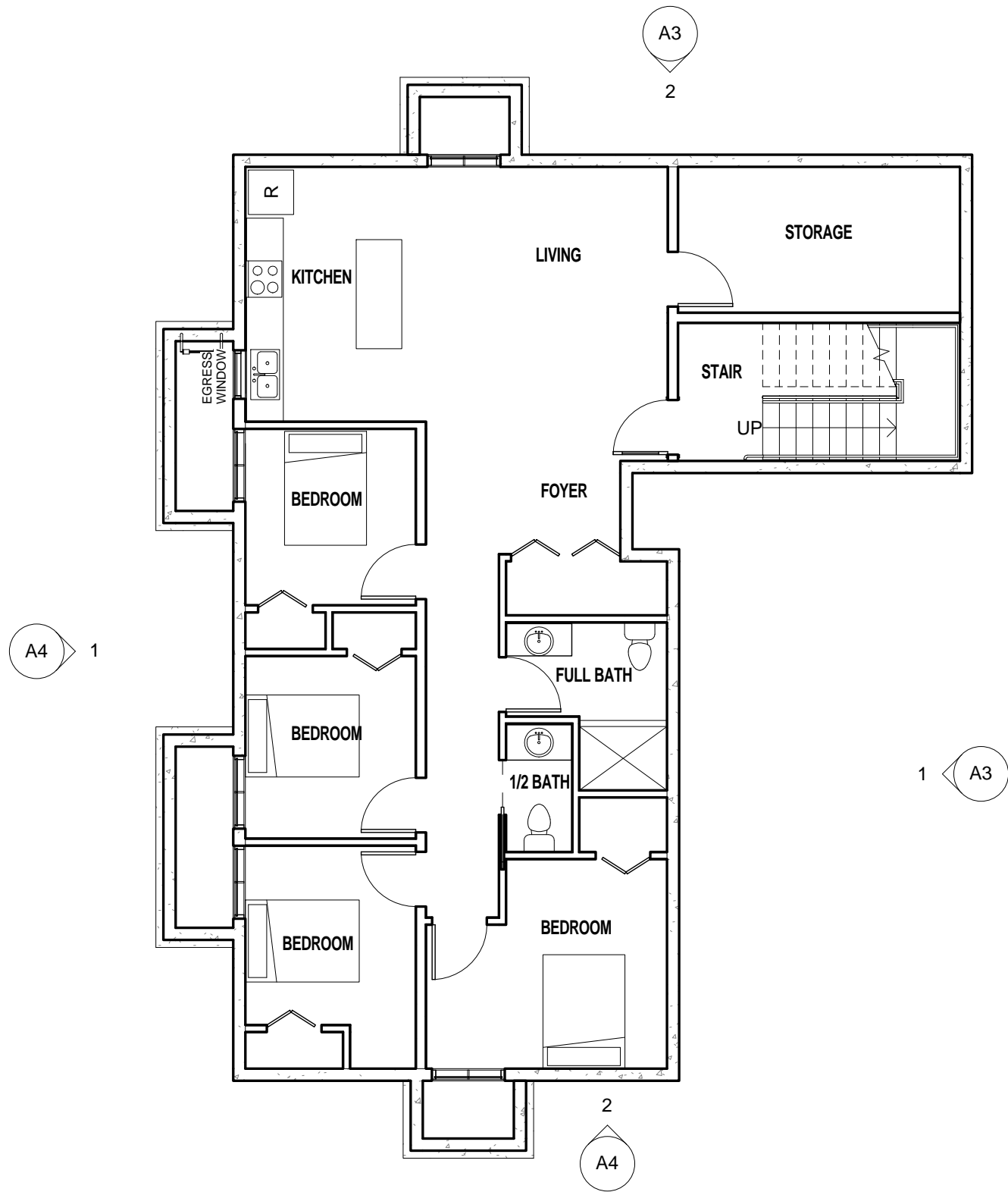


Brandon Cook  
115-117 South Bassett

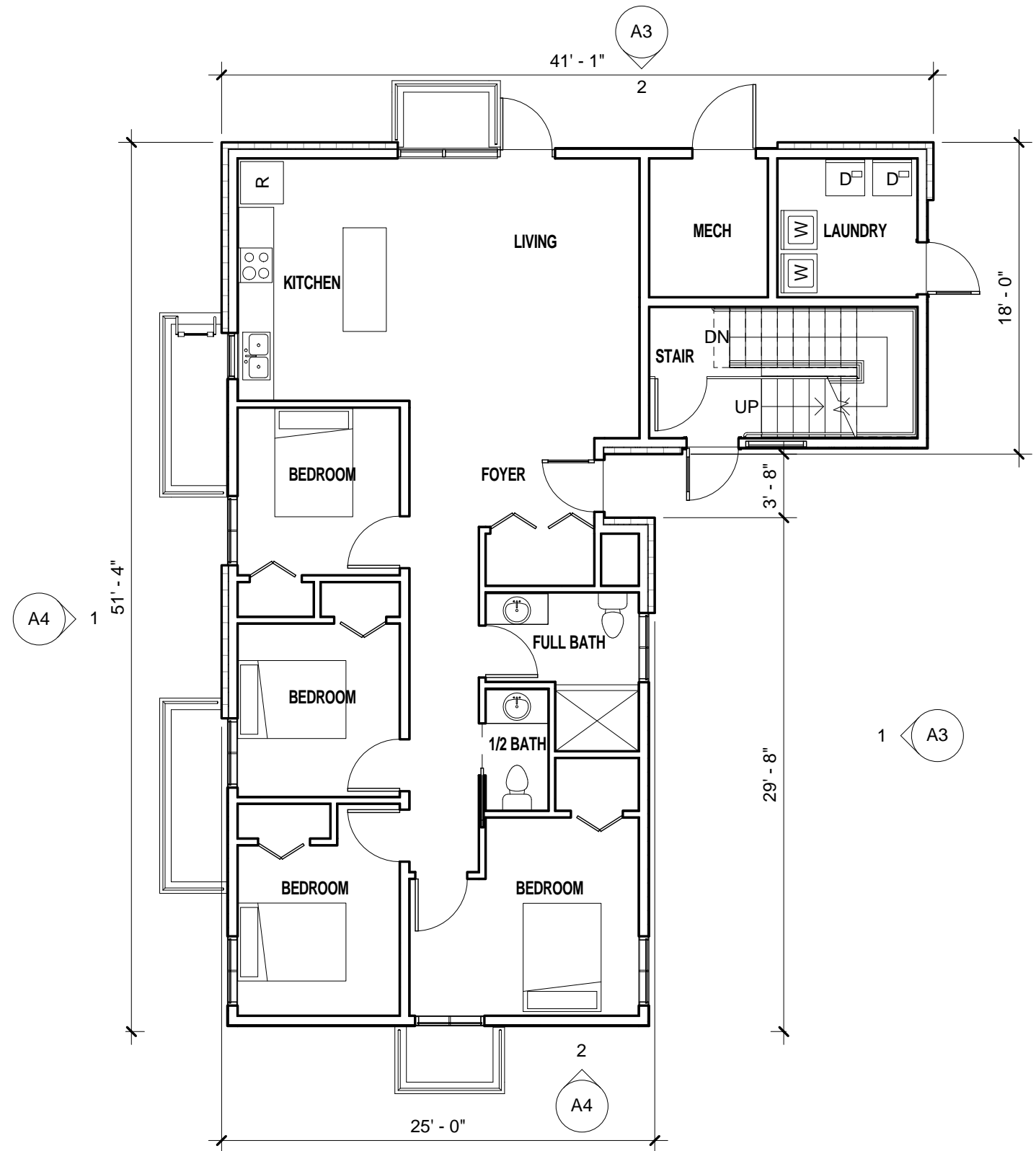
115-117 S. Bassett Street  
Madison, WI 53703

No.	Description	Date	Contextual Photos	
			Project number	BRC-15-02
			Date	6/10/2015
			Scale	
			Project Phase	Major Amendment to Approved PD-SIP

T3



**1 LOWER FLOOR**  
1/8" = 1'-0"



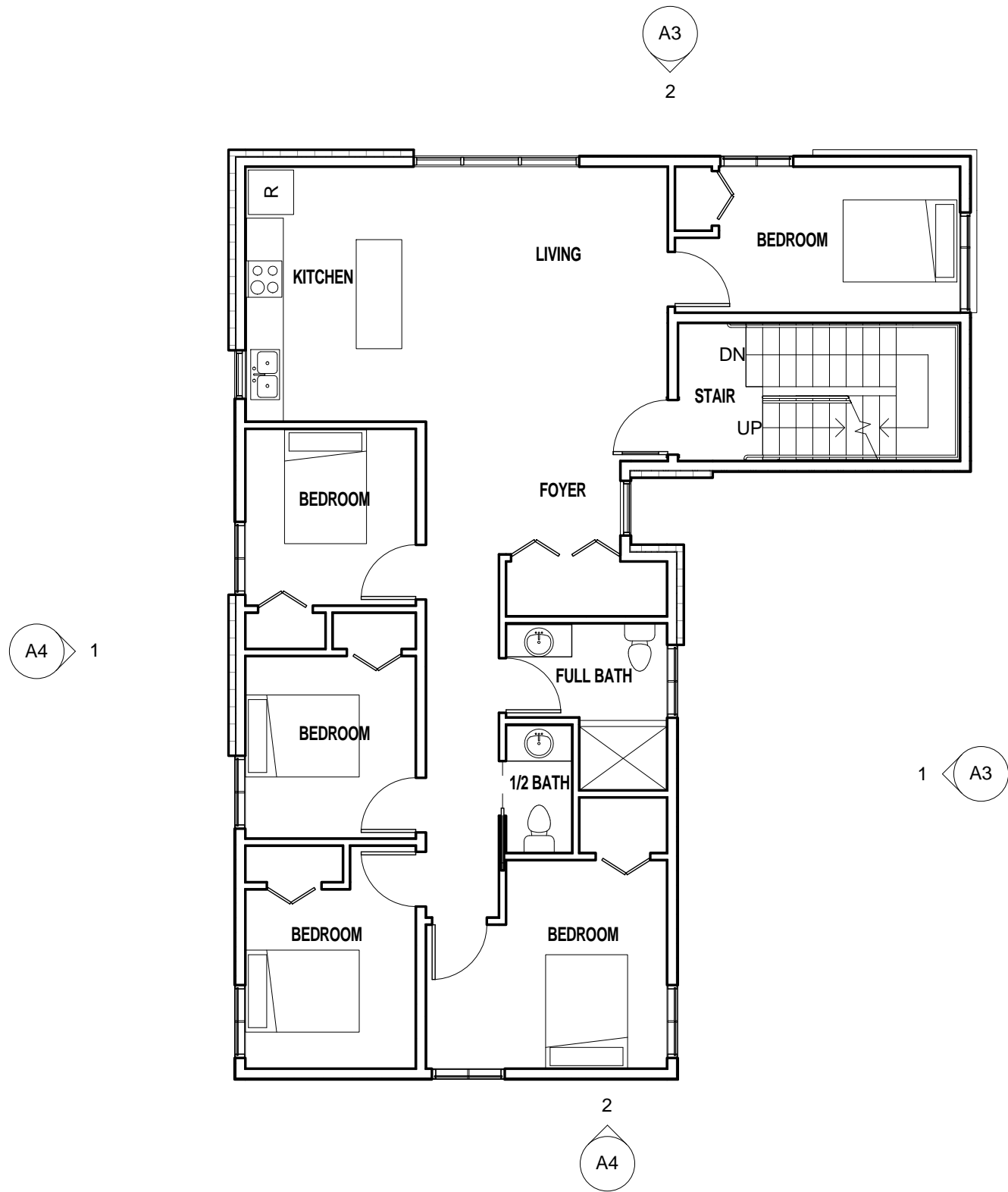
**2 FIRST FLOOR**  
1/8" = 1'-0"



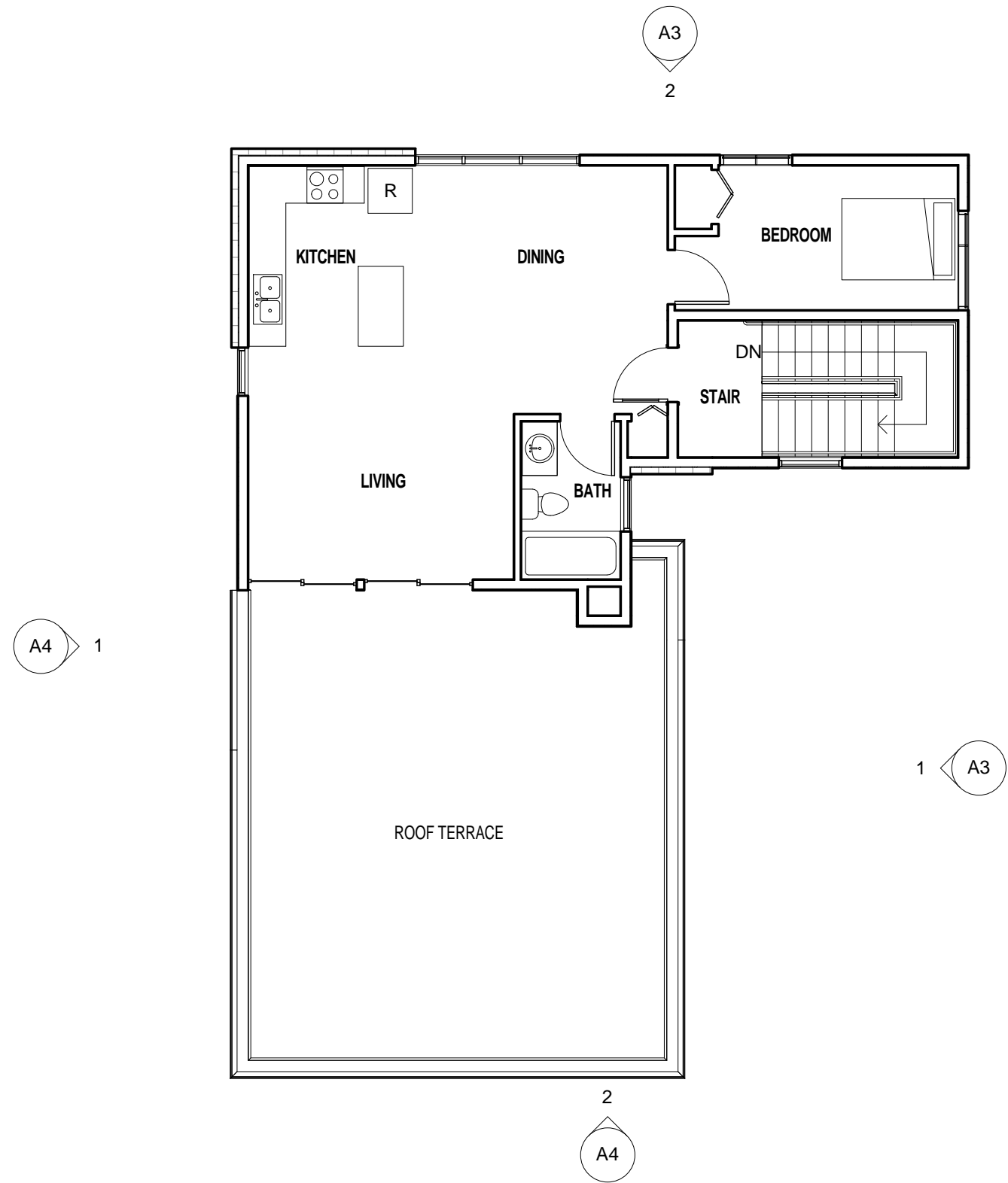
Brandon Cook  
115-117 South Bassett  
115-117 S. Bassett Street  
Madison, WI 53703

No.	Description	Date

<b>Floor Plans</b>	
Project number	BRC-15-02
Date	6/10/2015
Scale	1/8" = 1'-0"
Project Phase	Major Amendment to Approved PD-SIP

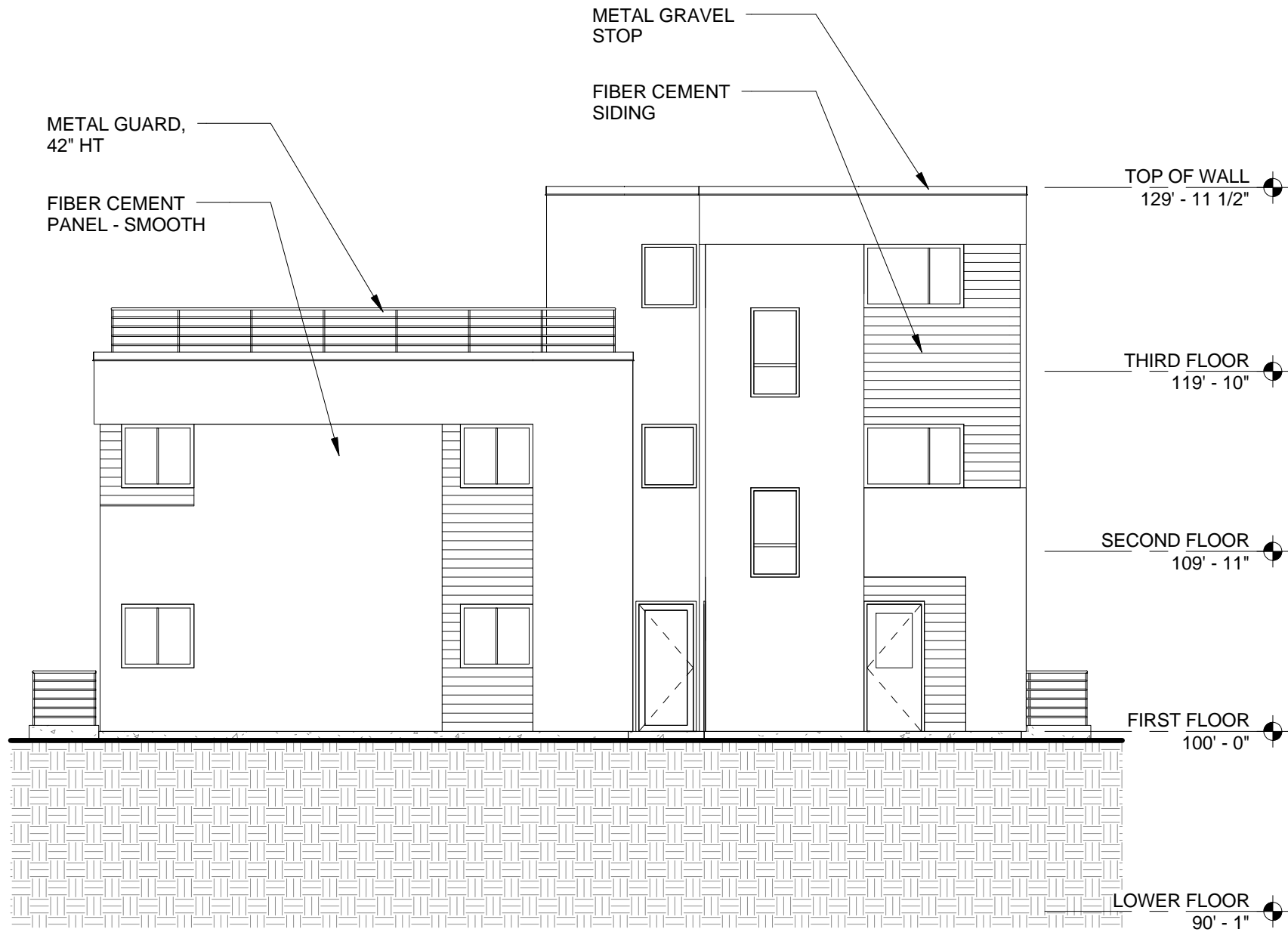


**1 SECOND FLOOR**  
1/8" = 1'-0"

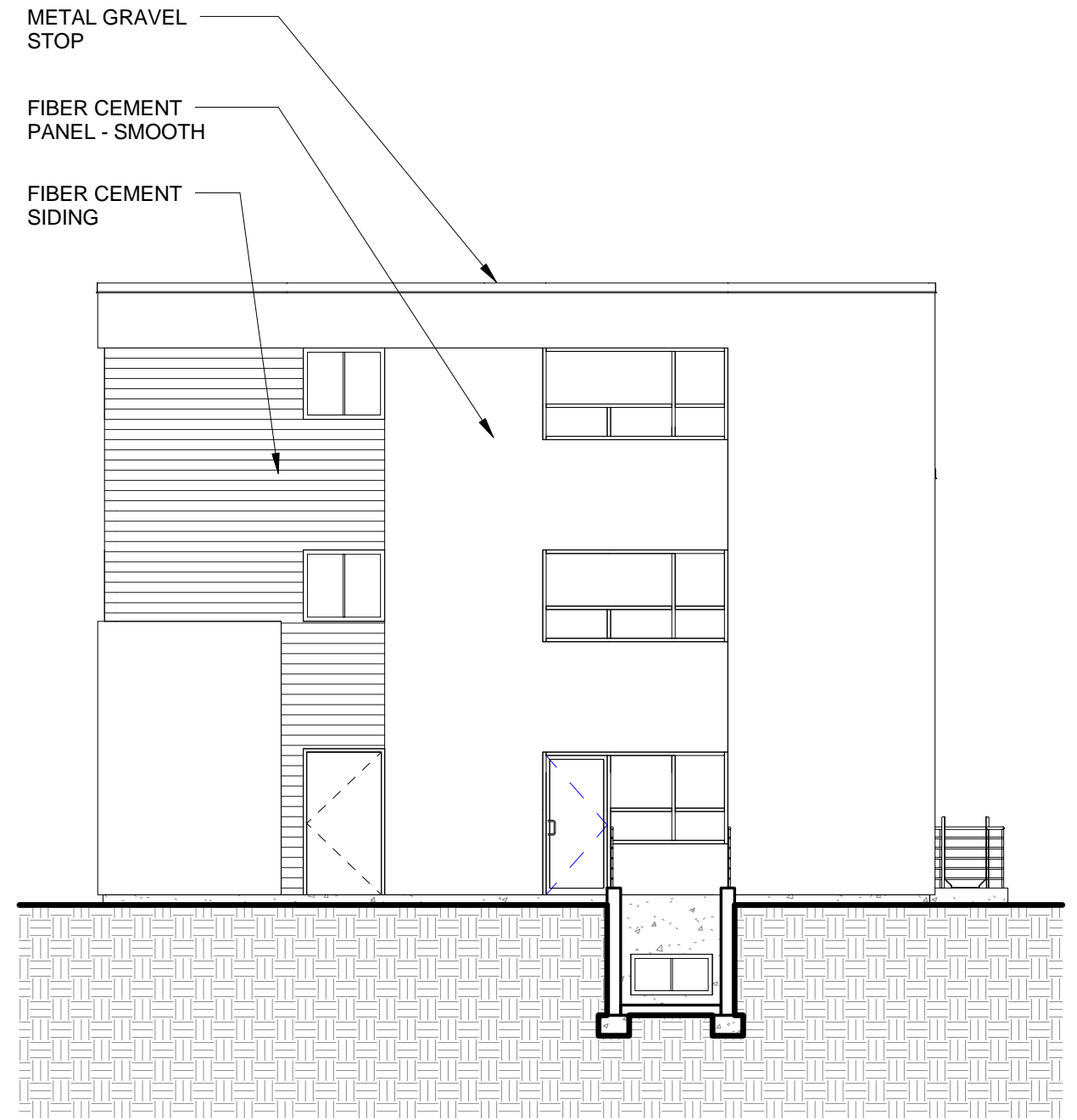


**2 THIRD FLOOR**  
1/8" = 1'-0"

No.	Description	Date	Floor Plans	
			Project number	BRC-15-02
			Date	6/10/2015
			Scale	1/8" = 1'-0"
			Project Phase	Major Amendment to Approved PD-SIP

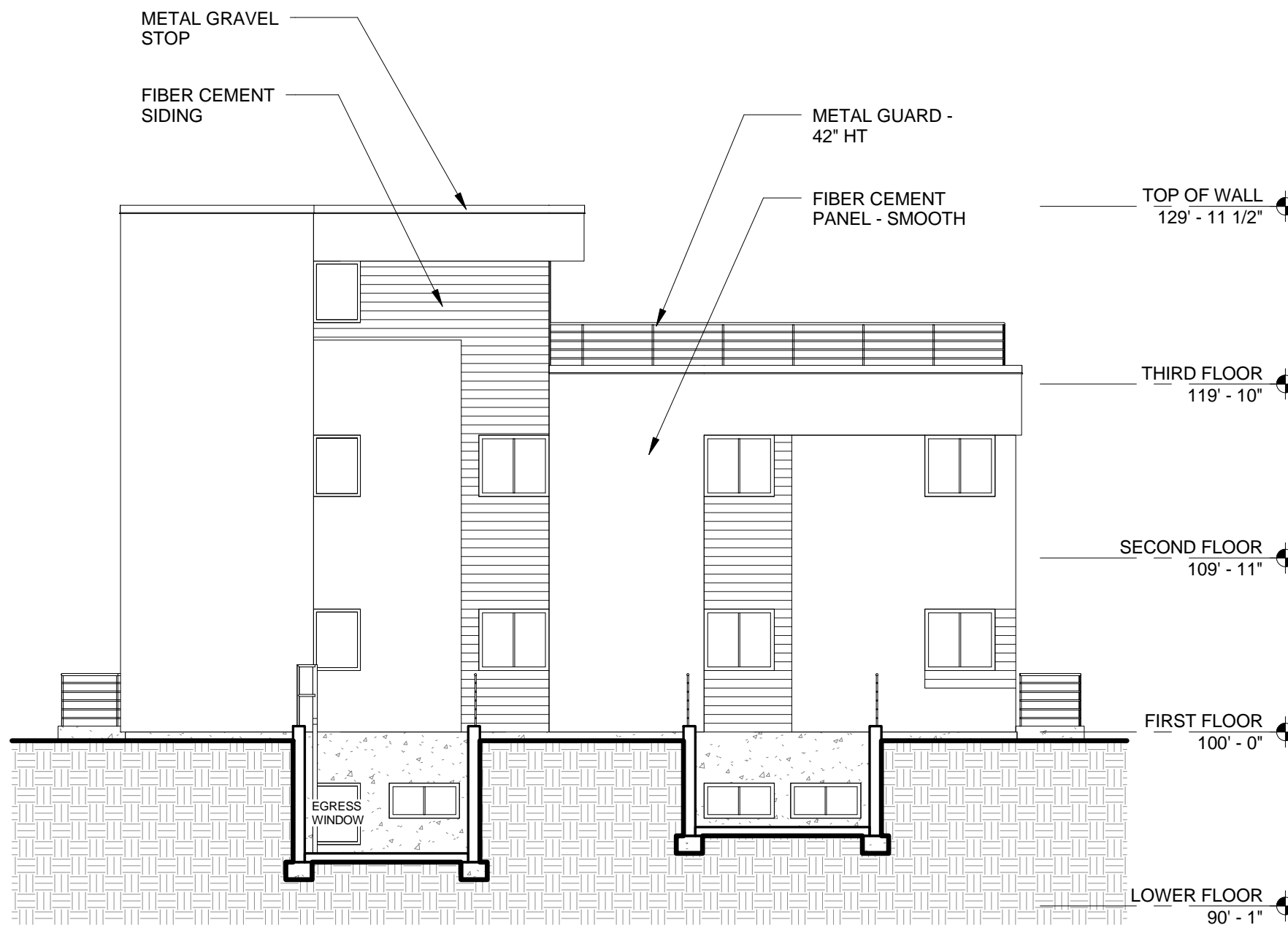


**1** **SOUTHWEST ELEVATION**  
1/8" = 1'-0"

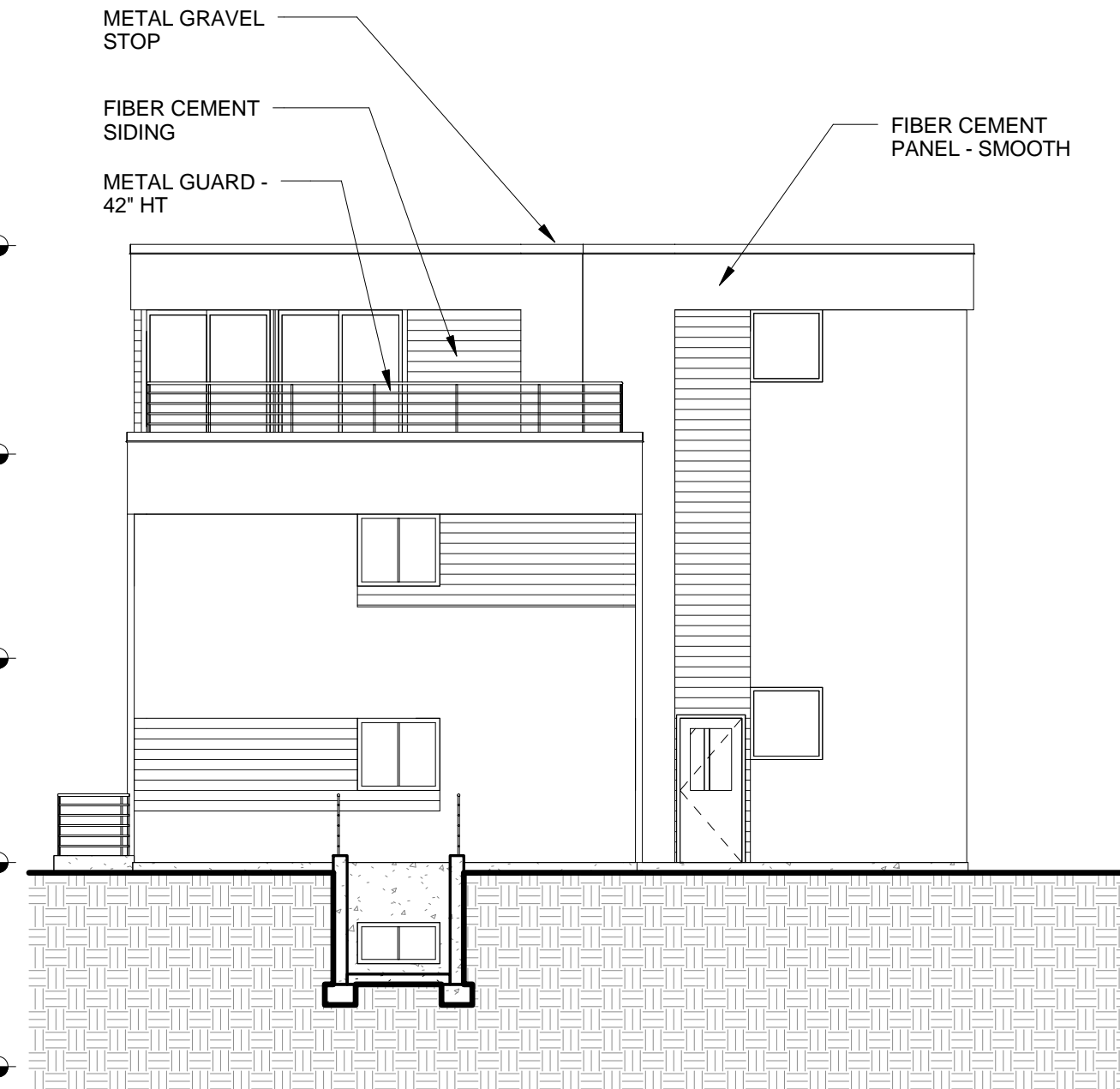


**2** **SOUTHEAST ELEVATION**  
1/8" = 1'-0"

No.	Description	Date	Elevations	
			Project number	BRC-15-02
			Date	6/10/2015
			Scale	1/8" = 1'-0"
			Project Phase	Major Amendment to Approved PD-SIP



**1** **NORTHEAST ELEVATION**  
1/8" = 1'-0"



**2** **NORTHWEST ELEVATION**  
1/8" = 1'-0"

No.	Description	Date	Elevations	
			Project number	BRC-15-02
			Date	6/10/2015
			Scale	1/8" = 1'-0"
			Project Phase	Major Amendment to Approved PD-SIP



AERIAL VIEW FROM WEST



AERIAL VIEW FROM SOUTH



**Brandon Cook**  
**115-117 South Bassett**

115-117 S. Bassett Street  
 Madison, WI 53703

No.	Description	Date

**3D Views**

Project number	BRC-15-02
Date	6/10/2015
Scale	
Project Phase	Major Amendment to Approved PD-SIP

A5





**Brandon Cook**  
**115-117 South Bassett**  
 115-117 S. Bassett Street  
 Madison, WI 53703

No.	Description	Date	3D Views	
			Project number	BRC-15-02
			Date	6/10/2015
			Scale	
			Project Phase	Major Amendment to Approved PD-SIP

A6



VIEW FROM NORTH

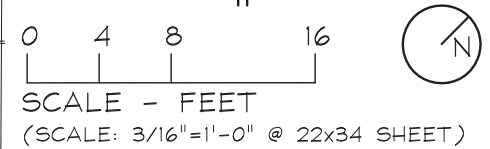
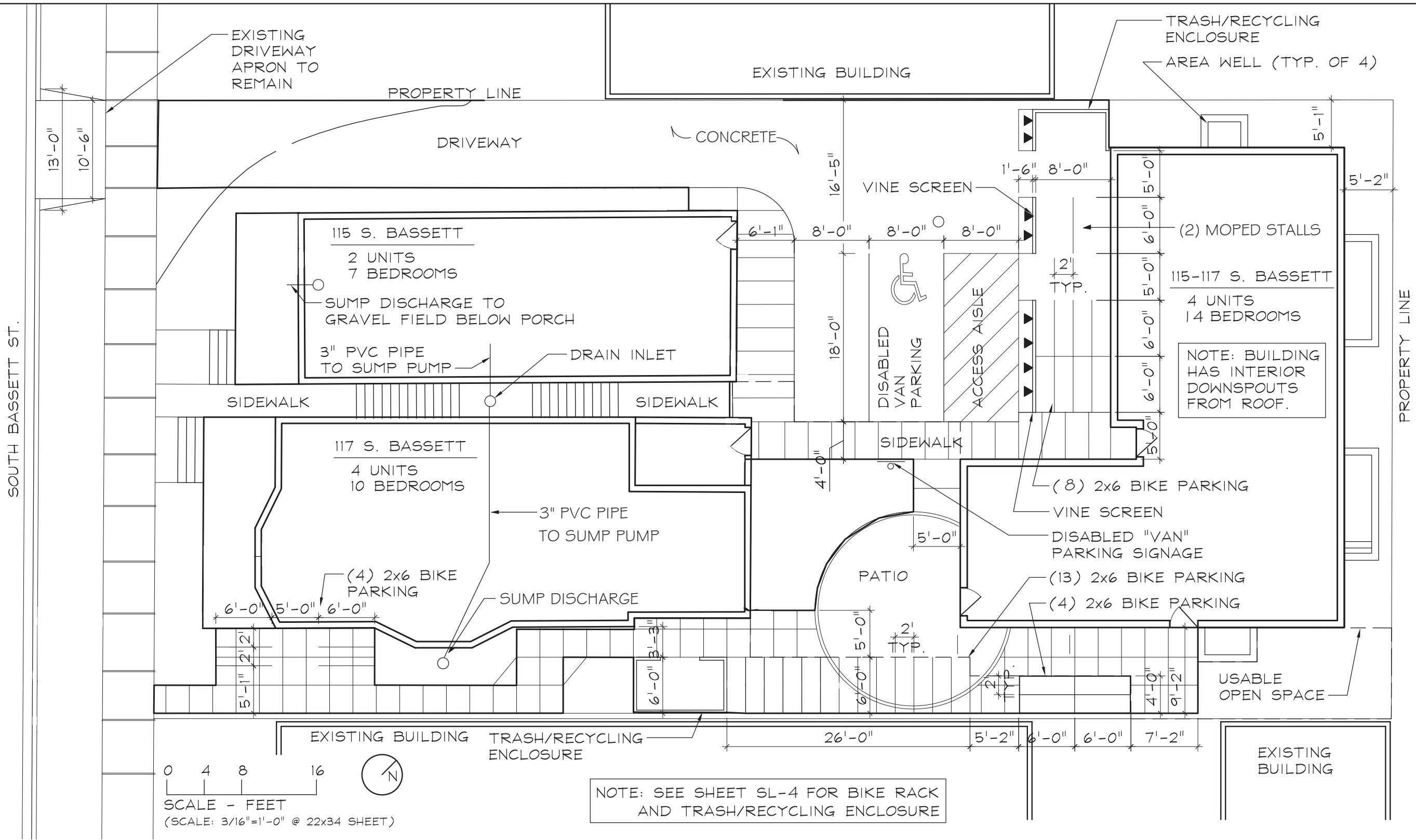


VIEW FROM EAST

No.	Description	Date

**3D Views**

Project number	BRC-15-02
Date	6/10/2015
Scale	
Project Phase	Major Amendment to Approved PD-SIP



NOTE: SEE SHEET SL-4 FOR BIKE RACK AND TRASH/RECYCLING ENCLOSURE

SITE STATISTICS

LOT SIZE: 8,750 SF	
EXISTING SITE	
IMPERVIOUS SURFACE AREA:	8,388 SF
IMPERVIOUS SURFACE RATIO:	95.9%
PROPOSED SITE	
IMPERVIOUS SURFACE AREA:	7,436 SF
IMPERVIOUS SURFACE RATIO:	85%
USABLE OPEN SPACE	
USABLE OPEN SPACE AREA:	942 SF
USABLE OPEN SPACE RATIO:	10.7%
TOTAL BEDROOMS (31 PROPOSED)	
BIKE PARKING REQUIRED:	31
BIKE PARKING PROVIDED:	31 (INCL 2 MOPED)

REVISIONS:

Bassett St.  
Residential

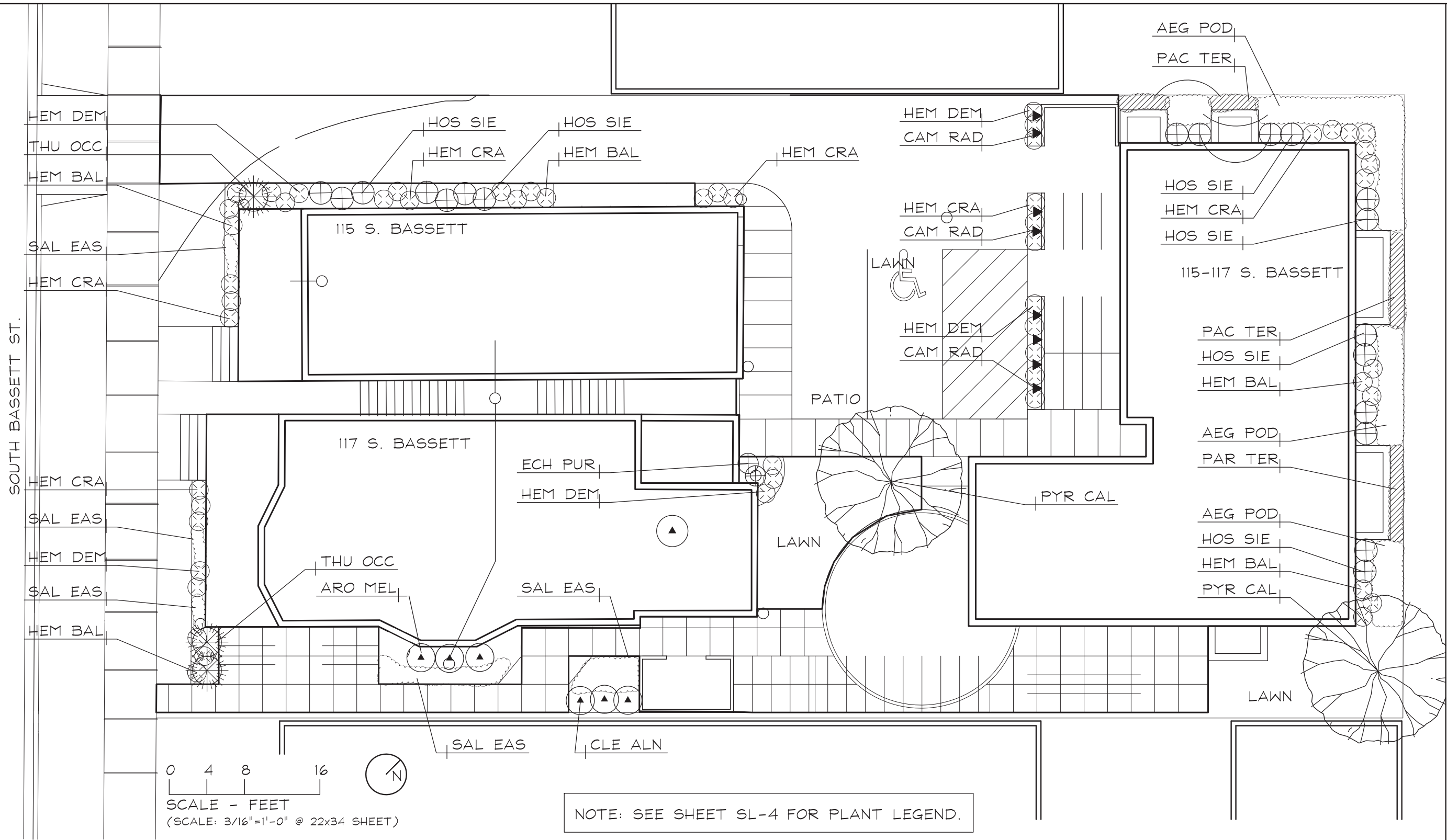
115-117 South Bassett St.  
Madison, WI

Site Layout Plan

June 10, 2015

SL-1





REVISIONS:

### Bassett St. Residential

115-117 South Bassett St.  
Madison, WI

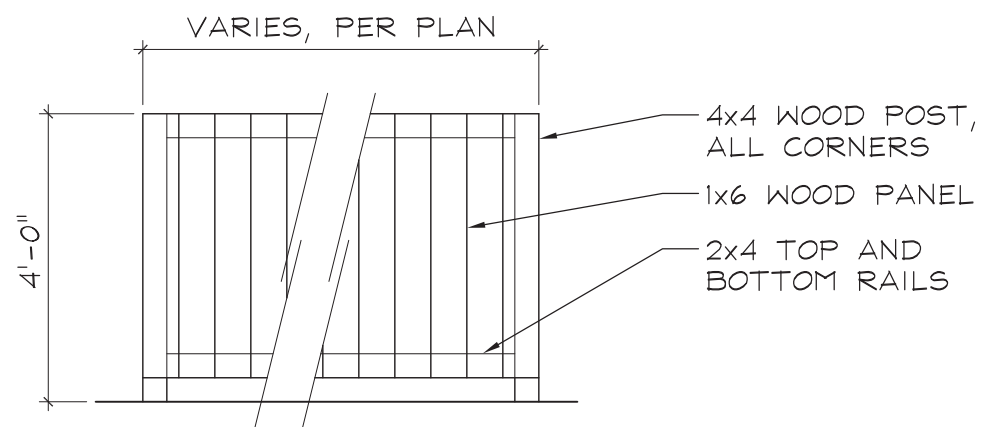
Landscape Plan

June 10, 2015

SL-3

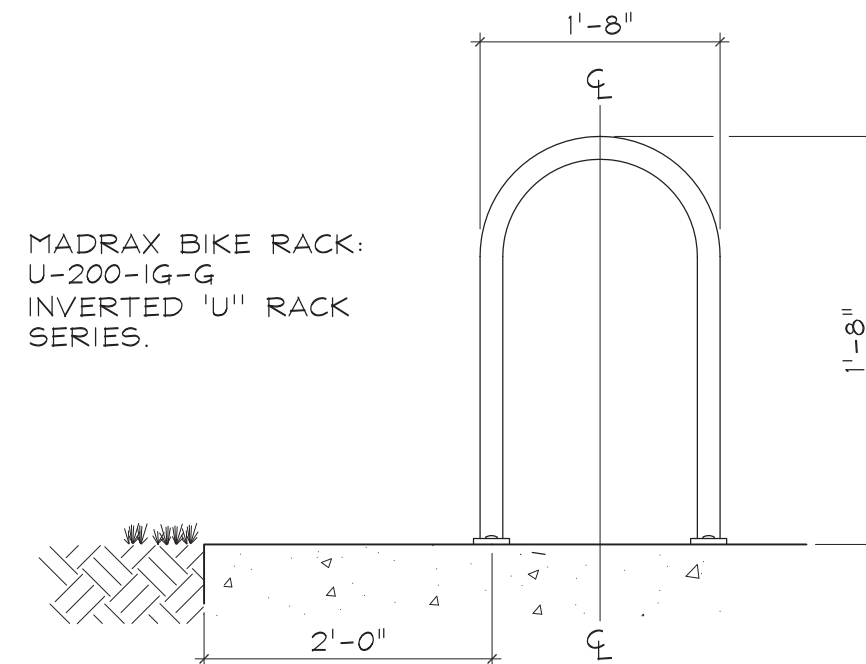
### LANDSCAPE PLANT LEGEND

Symbol	Botanical name	Common Name	Size	Root	Quantity	Comments
TREES						
PYR CAL	<i>Pyrus calleryana</i>	Callery Pear	2" Cal.	B#B	2	
EVERGREEN TREES/SHRUBS						
THU OCC	<i>Thuja occidentalis</i> 'Smaragd'	Emerald Green Arborvitae	4' Ht.	Cont.	3	
DECIDUOUS SHRUBS						
ARO MEL	<i>Aronia melanocarpa</i> 'Autumn Magic'	Autumn Magic Black Chokeberry	5 Gal.	Cont.	5	
CLE ALN	<i>Clethra Alnifolia</i> 'Hummingbird'	Hummingbird Summersweet	5 Gal.	Cont.	3	
PERENNIALS / GROUNDCOVER / VINE						
AEG POD	<i>Aegopodium podagraria</i> 'Variegatum'	Bishop's Weed	4' Pot	Cont.		Plant at 12" O.C.
CAM RAD	<i>Campsis radicans</i>	Trumpet creeper	3 Gal.	Cont.	8	
ECH PUR	<i>Echinacea purpurea</i> 'Ruby Star'	Ruby Star Coneflower	3 Gal.	Cont.	2	
HEM BAL	<i>Hemerocallis</i> 'Baltimore Oriole'	Baltimore Oriole	3 Gal.	Cont.	15	Red/Orange Flowers
HEM CRA	<i>Hemerocallis</i> 'Cradle of Liberty'	Cradle of Liberty	3 Gal.	B#B	11	Scarlet Red Flowers
HEM DEM	<i>Hemerocallis</i> 'Demetrius'	Demetrius Daylily	3 Gal.	Cont.	12	Yellow Flowers
HOS SIE	<i>Hosta sieboldiana</i> 'Elgans'	Elgans Hosta	3 Gal.	Cont.	19	Blue/Green Leaves
PAC TER	<i>Pachysandra terminalis</i>	Pachysandra	4' Pot	Cont.		Plant at 12" O.C.
SAL EAS	<i>Salvia</i> 'East Friesland'	East Friesland Salvia	4' Pot	Cont.		Plant at 12" O.C.



TRASH / RECYCLING ENCLOSURE

N.T.S.



BIKE RACK

N.T.S.

REVISIONS:

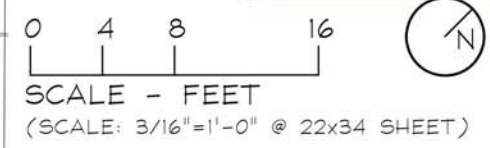
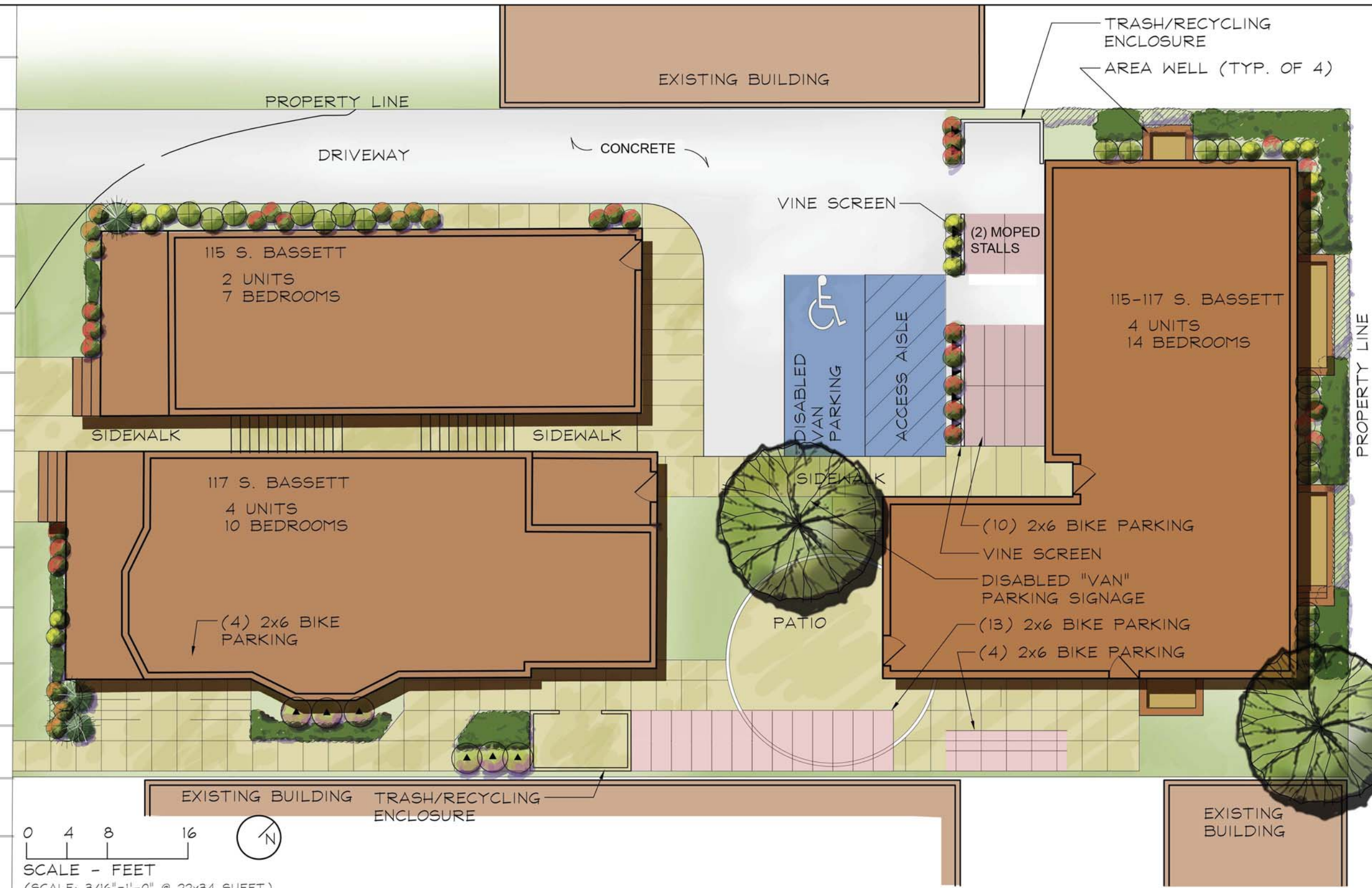
## Bassett St. Residential

115-117 South Bassett St.  
Madison, WI

Landscape Legend

June 10, 2015

SOUTH BASSETT ST.



SITE STATISTICS

LOT SIZE: 8,750 SF		USABLE OPEN SPACE	
EXISTING SITE		USABLE OPEN SPACE AREA: 942 SF	
IMPERVIOUS SURFACE AREA:	8,388 SF	USABLE OPEN SPACE RATIO: 10.7%	
IMPERVIOUS SURFACE RATIO:	95.9%	TOTAL BEDROOMS (31 PROPOSED)	
PROPOSED SITE		BIKE PARKING REQUIRED: 31	
IMPERVIOUS SURFACE AREA:	7,436 SF	BIKE PARKING PROVIDED: 31	
IMPERVIOUS SURFACE RATIO:	85%		

Bassett St.  
Residential

115-117 South Bassett St.  
Madison, WI  
Illustrative Site Plan

June 10, 2015

SL-5