

ISTHMUS MONTESSORI ACADEMY

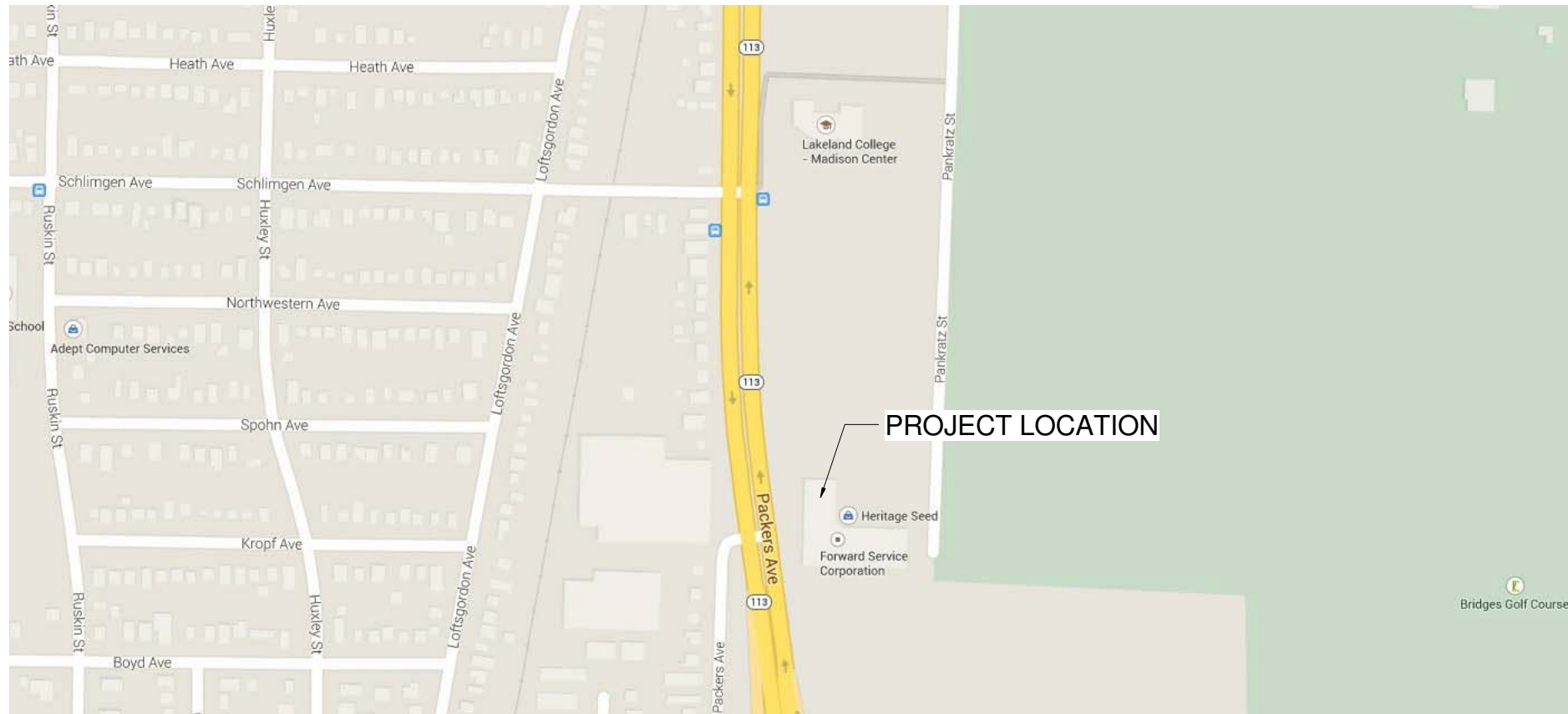
SCHOOL RELOCATION

1402 PANKRATZ ST.
MADISON, WI 53704

LAND USE APPLICATION SET

ARCHITECT CONTACT INFORMATION:
ARO EBERLE ARCHITECTS INC.
MATTHEW ARO
116 KING STREET, SUITE 202
MADISON, WI 53703
608-204-7464

OWNER CONTACT INFORMATION:
CARRIE MARLETTE
255 N. SHERMAN AVE.
MADISON, WI 53704
608-661-8200



No.	Description	Date

ISTHMUS MONTESSORI ACADEMY

SCHOOL RELOCATION

1402 PANKRATZ ST.
MADISON, WI 53704

COVER SHEET

NOT FOR CONSTRUCTION

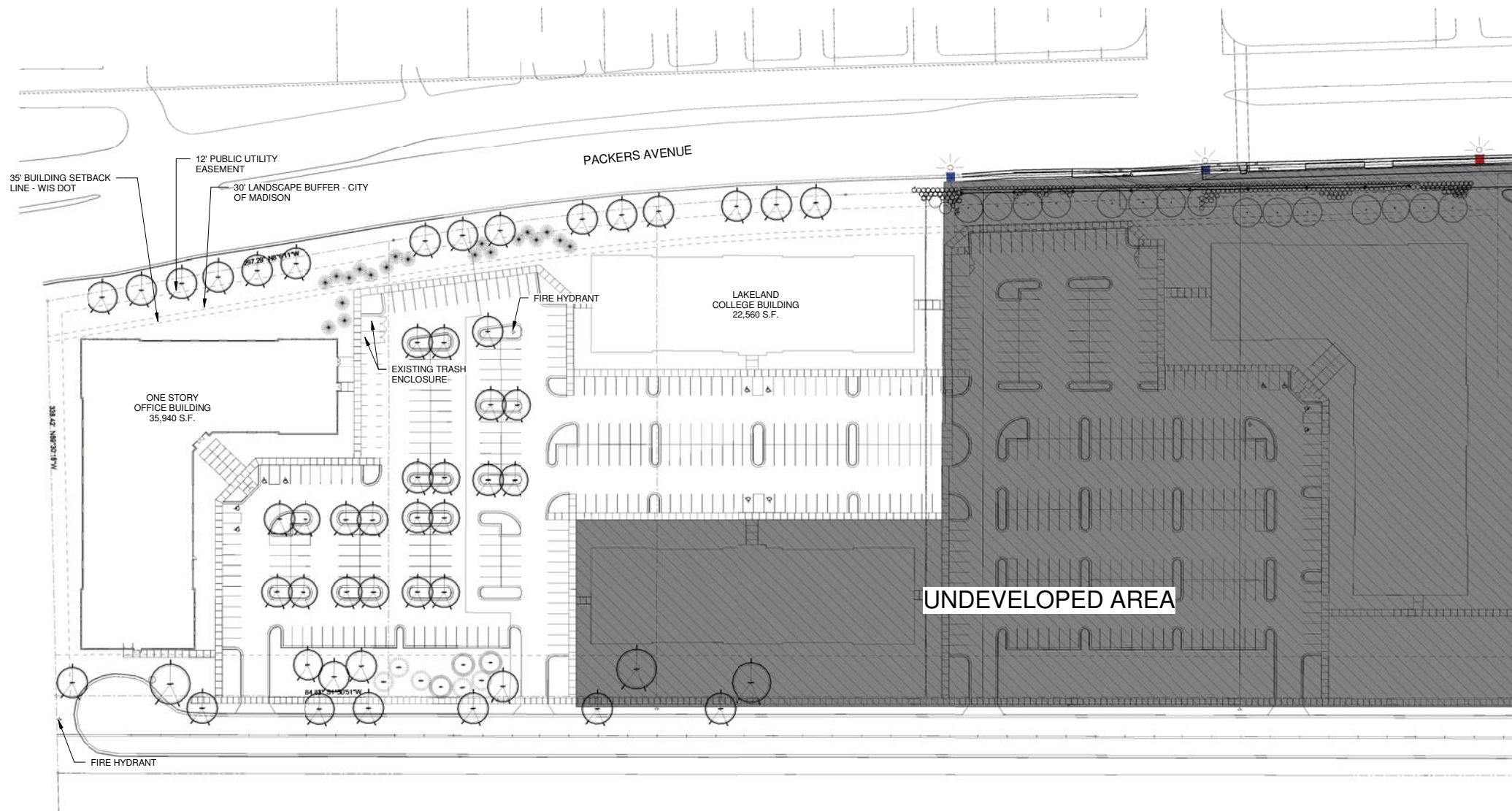
Project number: Project Number

Date: Project Issue Date

T000



2 Exterior Photos
1/4" = 1'-0"



1 SITE PLAN - OVERALL EXISTING CONDITIONS AND MASTERPLAN FOR AREA
1" = 60'-0"

No.	Description	Date

ISTHMUS MONTESSORI
ACADEMY

SCHOOL RELOCATION
1402 PANKRATZ ST.
MADISON, WI 53704

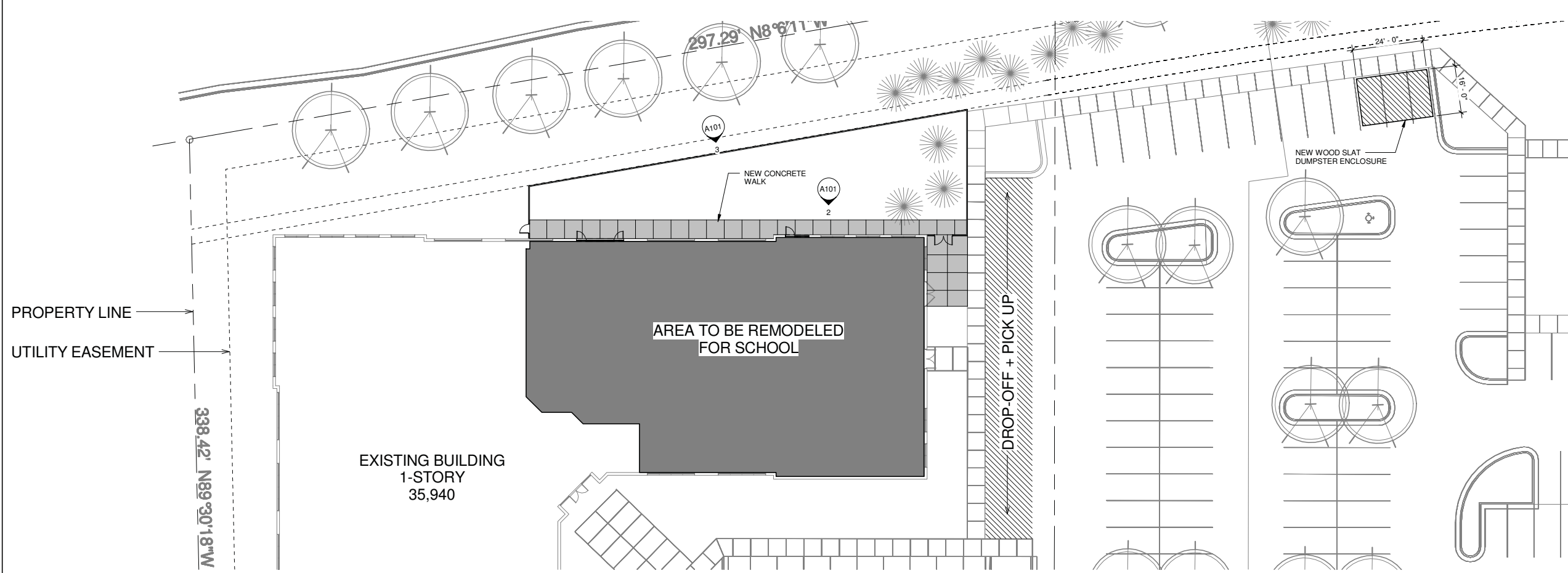
SITE PLAN - EXISTING
CONDITIONS

NOT FOR CONSTRUCTION

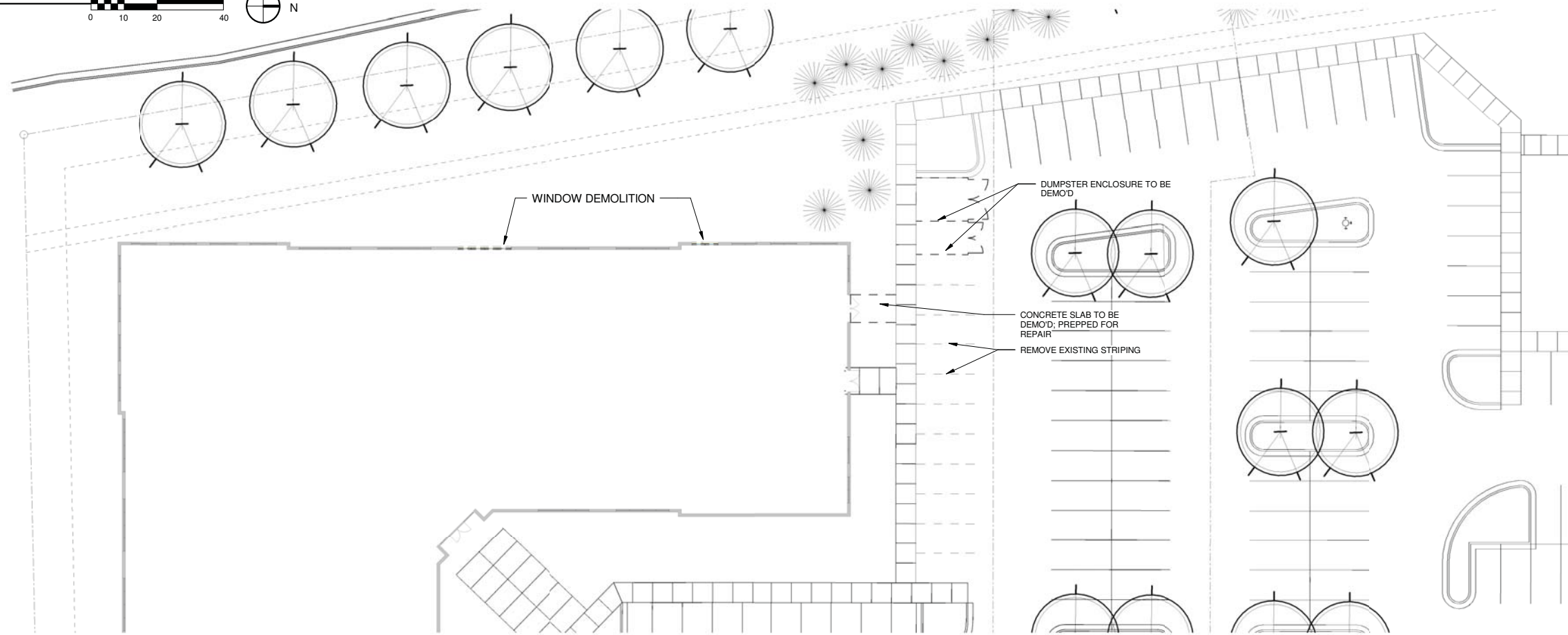
Project number	Project Number
Date	Project Issue Date

A001

3/18/2015 10:44:05 AM



2 NEW WORK SITE PLAN
1" = 20'-0"
0 10 20 40
N



1 SITE DEMO PLAN
1" = 20'-0"
0 10 20 40
N

No.	Description	Date

ISTHMUS MONTESSORI
ACADEMY
SCHOOL RELOCATION
1402 PANKRATZ ST.
MADISON, WI 53704
DEMO SITE PLAN & NEW
WORK SITE PLAN

NOT FOR CONSTRUCTION
Project number Project Number
Date Project Issue Date
A002

