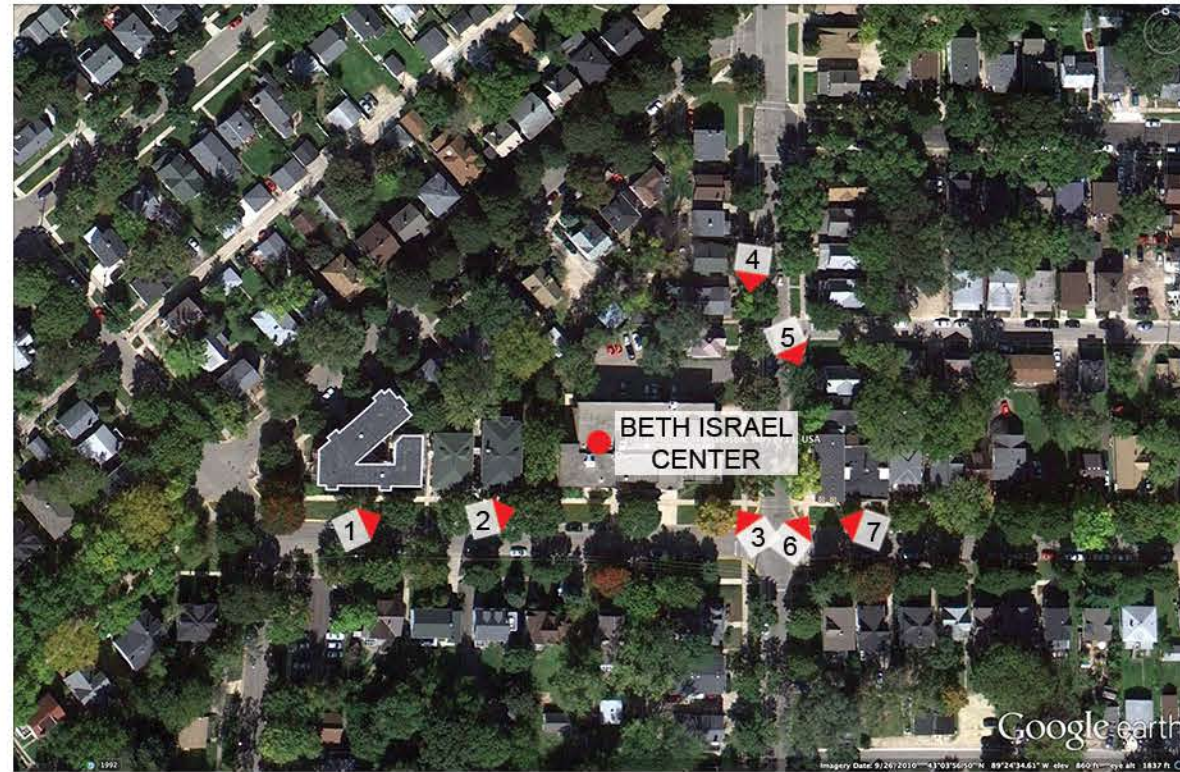




Image 1 - Adjacent Apartment Buildings along Mound looking East Street



Locator Map of Existing Images



Image 2 - Along sidewalk at Mound Street looking East



Image 3 - View North along Randall Street

13005.00

Existing Site Photos

Beth Israel Center - Renovation and Addition

Scale: NTS

Submitted on February 5, 2014 for March 24, 2014 Plan Commission Meeting



Image 4 - Site from sidewalk along Randall Street looking South



Image 6 - Commercial Building on corner of Mound & Randall looking NE

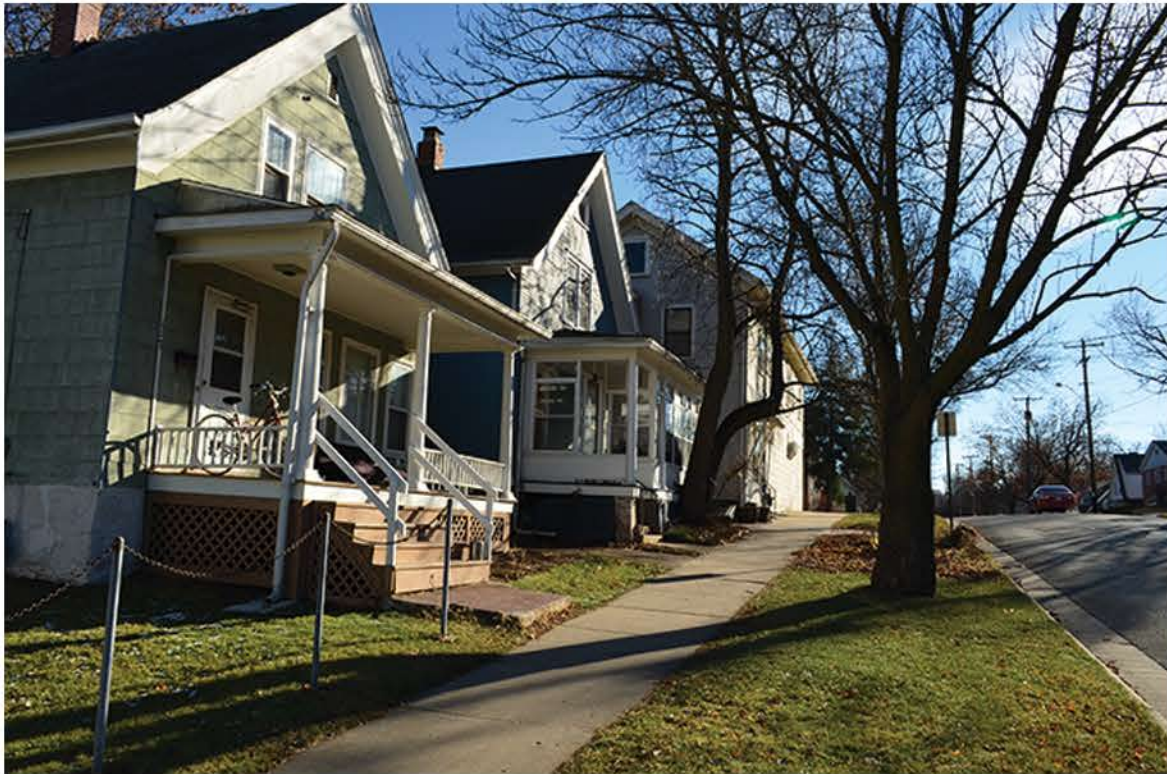


Image 5 - Property across Randall Street looking



Image 7 - Commercial Building on corner of Mound & Randall looking West

13005.00

Existing Site Photos

Beth Israel Center - Renovation and Addition

Scale: NTS

Submitted on February 5, 2014 for March 24, 2014 Plan Commission Meeting