

BENCHMARK = 18.98
 TOP NUT OF FIRE HYDRANT
 Based on the Hydrant at Randall
 Avenue and Monroe Street
 MH#2
 RIM=16.35
 INV.=11.47

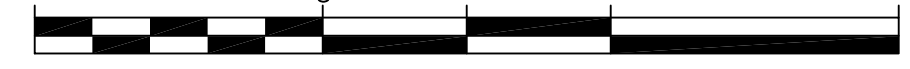
NOTE: Volume 13876, Page 38, Dane Co
 Register's of Deeds.

NOTE: Volume 10812, Page 31, Dane County
 Register's of Deeds.

NOTE:
 ZONING C3 M1
 SETBACKS:
 SIDE 0
 FRONT 0
 BACK 10 FEET SINGLE STORY
 30 FEET MULTI STORY

BEARINGS ARE REFERENCED TO
 SOUTH LINE OF MONROE STREET
 RECORDED AS :S50°30'00"W

GRAPHIC SCALE



LEGEND

- T— TELEPHONE (UNDERGROUND)
- G— NAT. GAS (UNDERGROUND)
- E— ELECTRIC (UNDERGROUND)
- OHE— ELECTRIC (OVERHEAD)
- W— WATER
- SAN— SANITARY SEWER
- STM— STORM SEWER
- ⊗ WATER SHUTOFF VALVE
- ⊗ GAS VALVE
- ⊗ FIRE HYDRANT
- POWERPOLE
- ⊙ SANITARY MANHOLE
- ⊙ LIGHTPOLE
- ⊙ SIGN
- ⊙ IRON STAKE FOUND
AS INDICATED
- ⊙ SURVEY MARK NAIL
SET
- ⊙ MAGNAIL SET

1 EXISTING SITE PLAN
 SCALE: 1" = 20'-0"



PLANNING Design Build, Inc.
 901 Deming Way, Suite 102
 Madison, WI 53717
 608.836.8055
 608.836.5818
 planningdesignbuild.com

UW CREDIT UNION - MONROE STREET
 1433 Monroe Street
 Madison, WI 53711

UW Credit Union
 3500 University Ave.
 Madison, WI 53744-4963

PROJECT #: 20040190
 PLOT DATE: 07/12/2005

REVISION DATES:

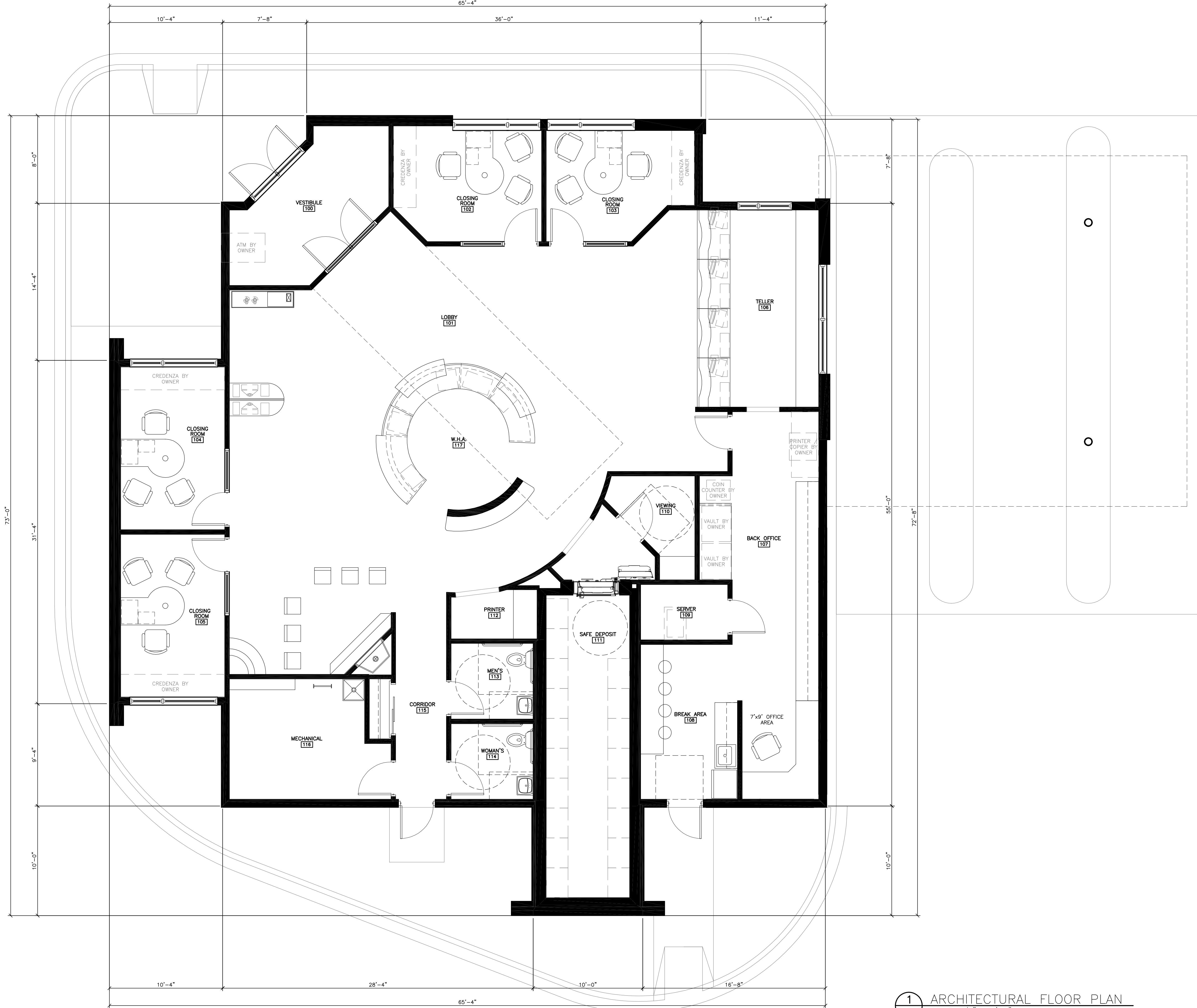
ISSUE DATES:
 CITY REZONING: 07-13-05

Construction Documents:
 This drawing shall be used
 for fabrication, erection and/or
 installation. Check all project
 addenda and construction
 bulletins for modifications.

This document contains confidential or
 proprietary information of PLANNING
 Design Build, Inc. Neither the document nor
 the information herein is to be reproduced,
 distributed, used or disclosed, either in
 whole or in part, except as specifically
 authorized by PLANNING Design Build, Inc.

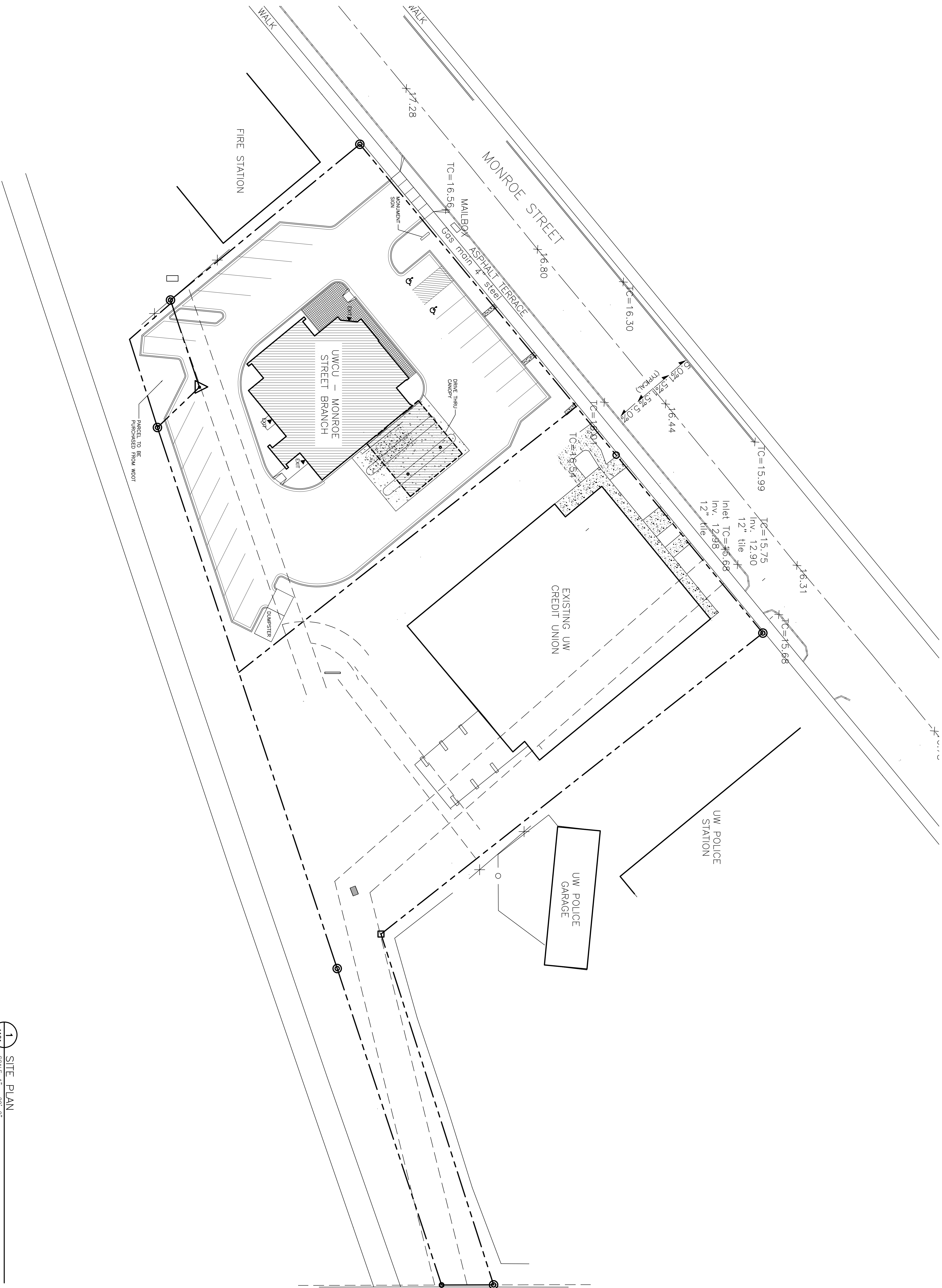
DRAWING NUMBER
A100

©2005 PLANNING Design Build, Inc.



1 ARCHITECTURAL FLOOR PLAN
A201 SCALE: 1/4" = 1'-0"

P:\20040190 - UW Credit Union - Monroe Street\3-00\Working\3-00-010-010.dwg, 7/12/2005, 4:58:46 PM



1 SITE PLAN
A101 SCALE: 1" = 20'-0"

PLANNING
DESIGN BUILD TEAM

PLANNING Design Build, Inc.
901 Deming Way, Suite 102
Madison, WI 53717
608.836.8055
608.836.5818
planningdesignbuild.com

UW CREDIT UNION - MONROE STREET
1433 Monroe Street
Madison, WI 53711

UW Credit Union
3500 University Ave.
Madison, WI 53744-4963

PROJECT #: 20040190
PLOT DATE: 07/12/2005

REVISION DATES:

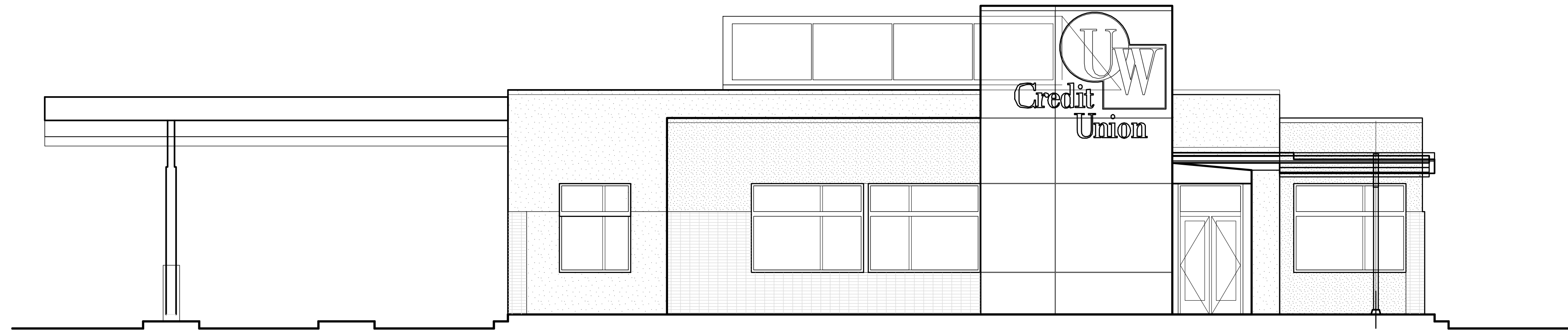
ISSUE DATES:
CITY REZONING: 07-13-05

Construction Documents:
This drawing shall be used for fabrication, erection and/or installation. Check all project addenda and construction bulletins for modifications.

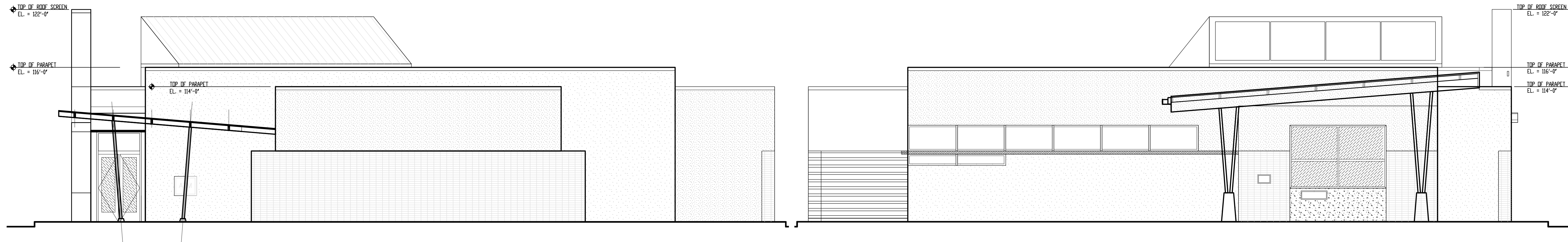
This document contains confidential or proprietary information of Planning Design Build, Inc. Neither the document nor the information herein is to be reproduced, stored in a retrieval system, or transmitted in any form or by any means, electronic, mechanical, photocopying, recording, or otherwise, without the prior written authorization of Planning Design Build, Inc.

DRAWING NUMBER
A101

©2005 Planning Design Build, Inc.

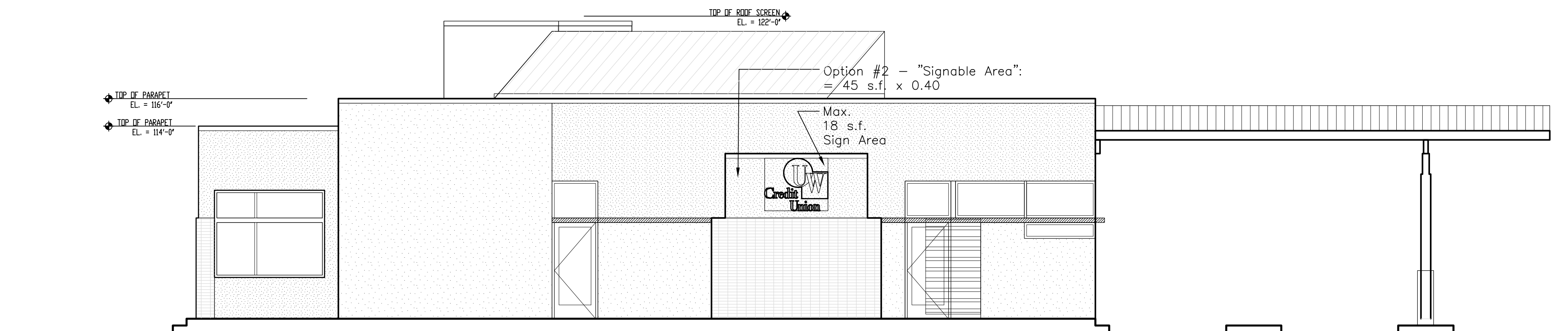


4 NORTH ELEVATION
 A301 SCALE: 3/16" = 1'-0"



3 WEST ELEVATION
 A301 SCALE: 3/16" = 1'-0"

2 EAST ELEVATION
 A301 SCALE: 3/16" = 1'-0"



1 SOUTH ELEVATION
 A301 SCALE: 3/16" = 1'-0"