

ranch

THE ALLISON

3 bedrooms

2 baths

1,126 to 1,476 square feet

PERSONALIZE YOUR JOHN WICK HOME

- 4 Season Rooms
- Walk-out Bays
- Home Office/Den
- Distinctive Elevations
- Gourmet Kitchens
- 3 or 4 Car Garages
- Luxury Master Suites and Bathrooms
- 9' Flat Ceilings
- Fireplace

Let us build one for you.



Simple process, smart solutions.

For nearly 50 years, the Wick family, along with its team of employees, builders and suppliers, has served its customers with quality and dependability. In that time, our company has helped over 25,000 families build their dreams. At John Wick Homes, we stake our name and reputation on every home we build, then back it up with the best service and best warranties in the business. We're one of the largest panelized home builders in the United States. **We're John Wick Homes.**



by Wick Building Systems, Inc.

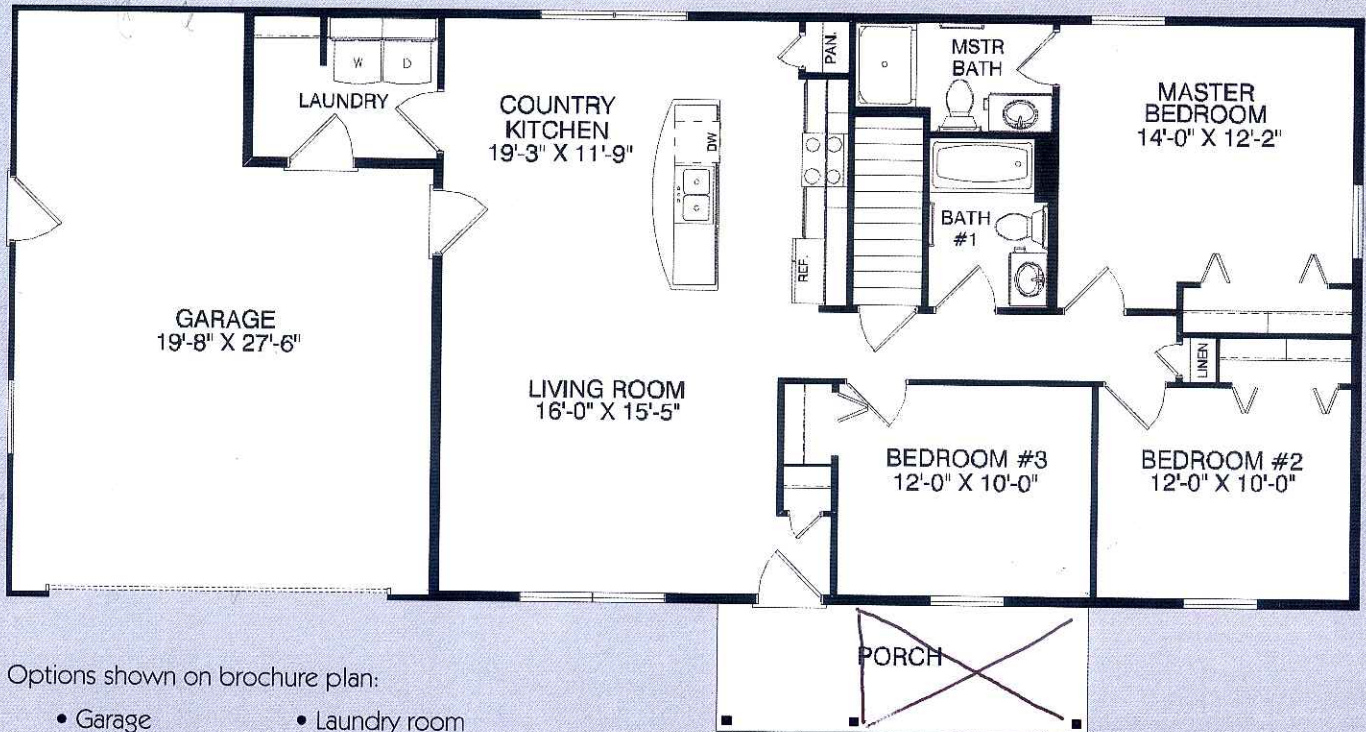
Final plans approved by builder and homebuyer take precedence over and may differ from artwork



John Wick Homes 1.800.442.WICK • 400 Walter Road, PO Box 0188, Mazomanie, WI 53560 • JohnWickHomes.com

THE ALLISON FLOOR PLAN

Shown in 44' length with options. Also available in 40' length.



Options shown on brochure plan:

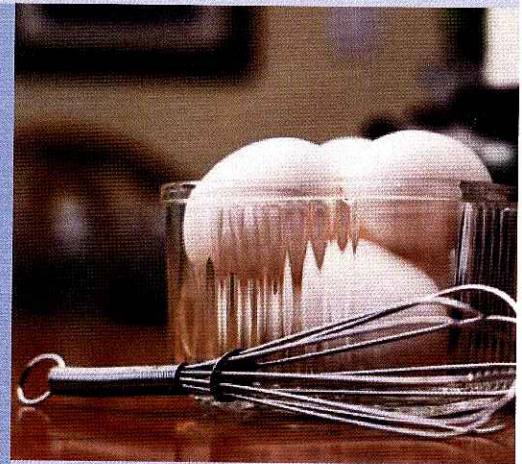
- Garage
- Laundry room
- Kitchen variation
- Front Porch

FEATURES

- Bedrooms clustered together
- Master bathroom
- Open kitchen with snack bar
- Linen closet

Contact **Meigs, Inc.** for information regarding our *John Wick Homes* and *Wick Building Systems* product lines!

Call: (800) 236-7310 or visit www.meigsbuilds.com



Let us build one for you.

Final plans approved by builder and homebuyer take precedence over and may differ from artwork

John Wick Homes 1.800.442.WICK • 400 Walter Road, PO Box 0188, Mazomanie, WI 53560 • JohnWickHomes.com



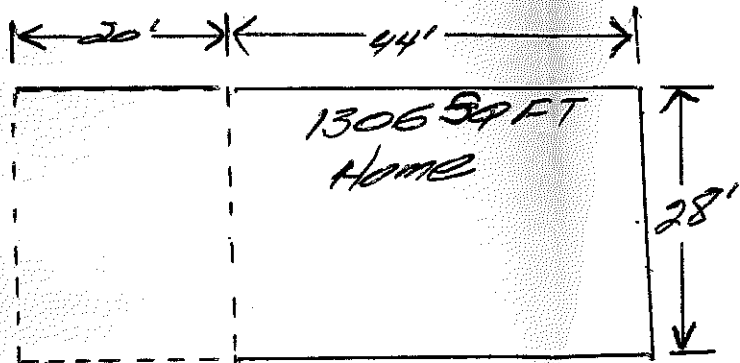
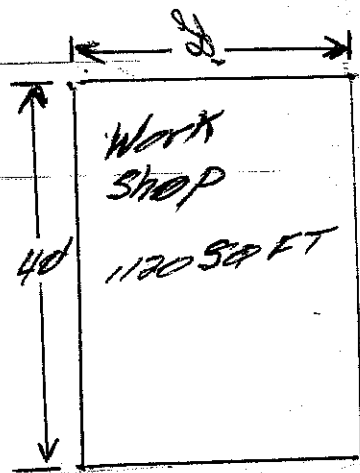
174'

LOT 25

499.5

499

499.0'



30'

SUNDSTROM

Scale:
1/8" = 1'

Sundstrom St.

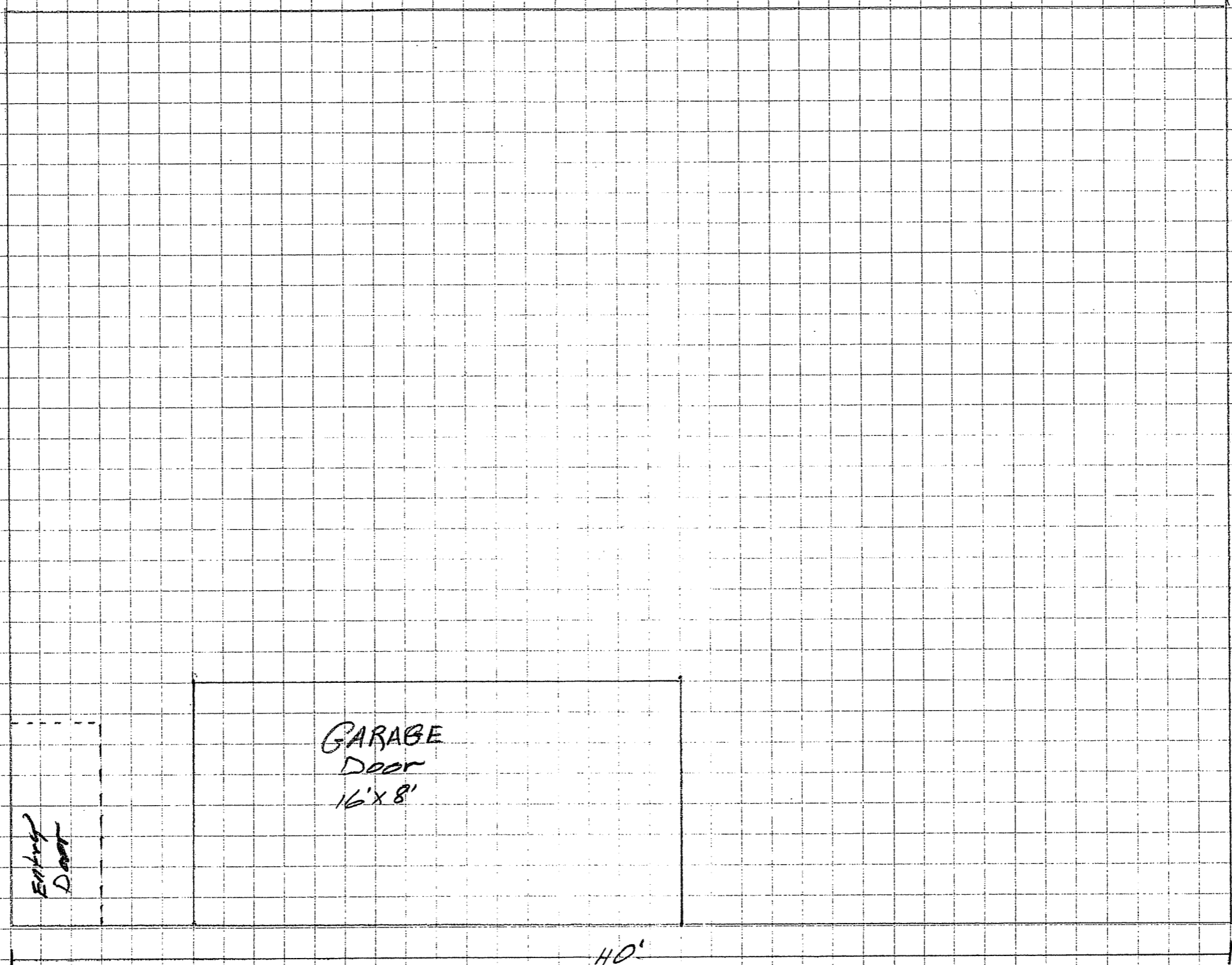
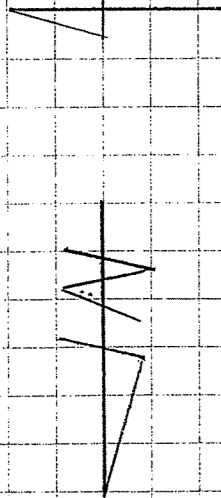
30'

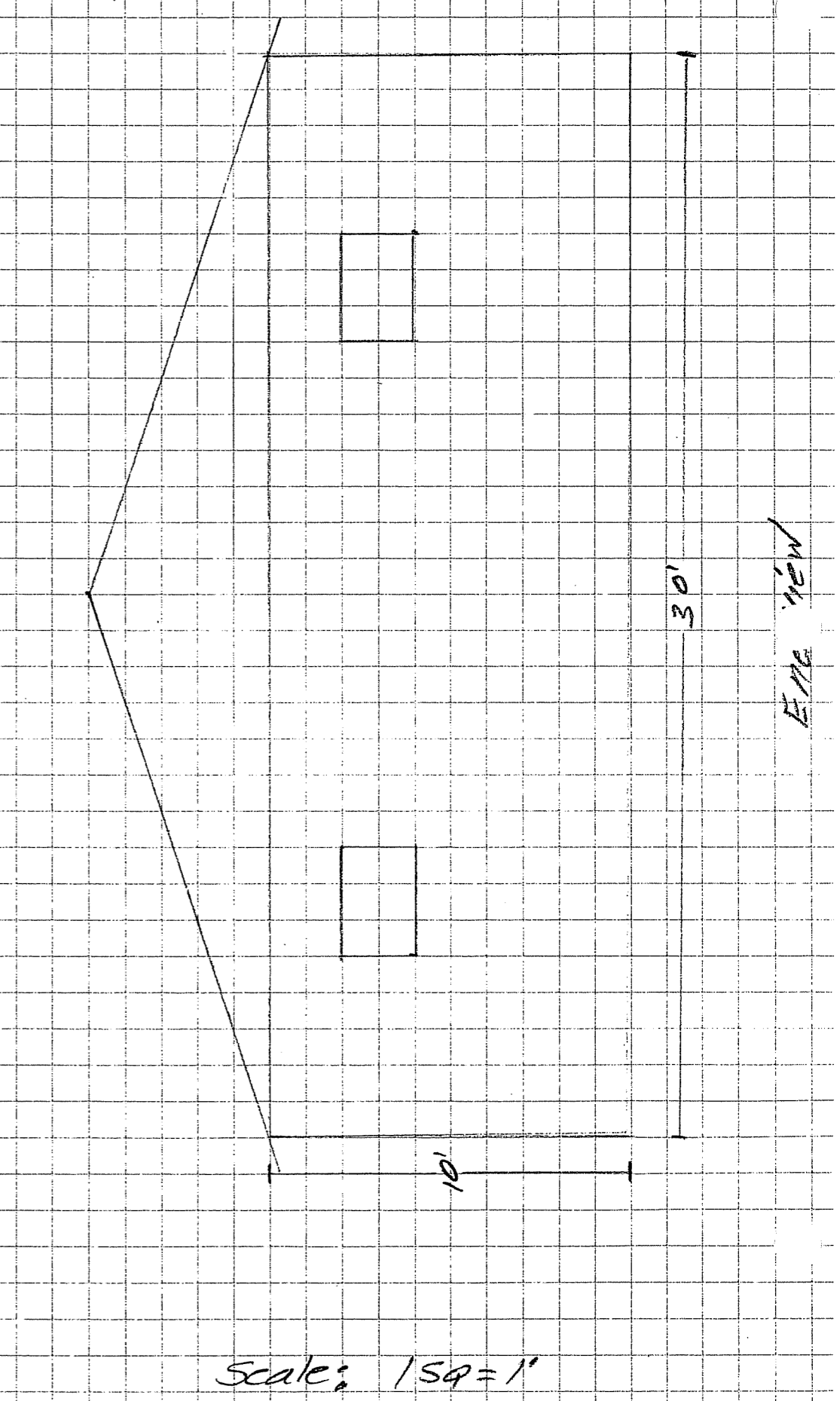
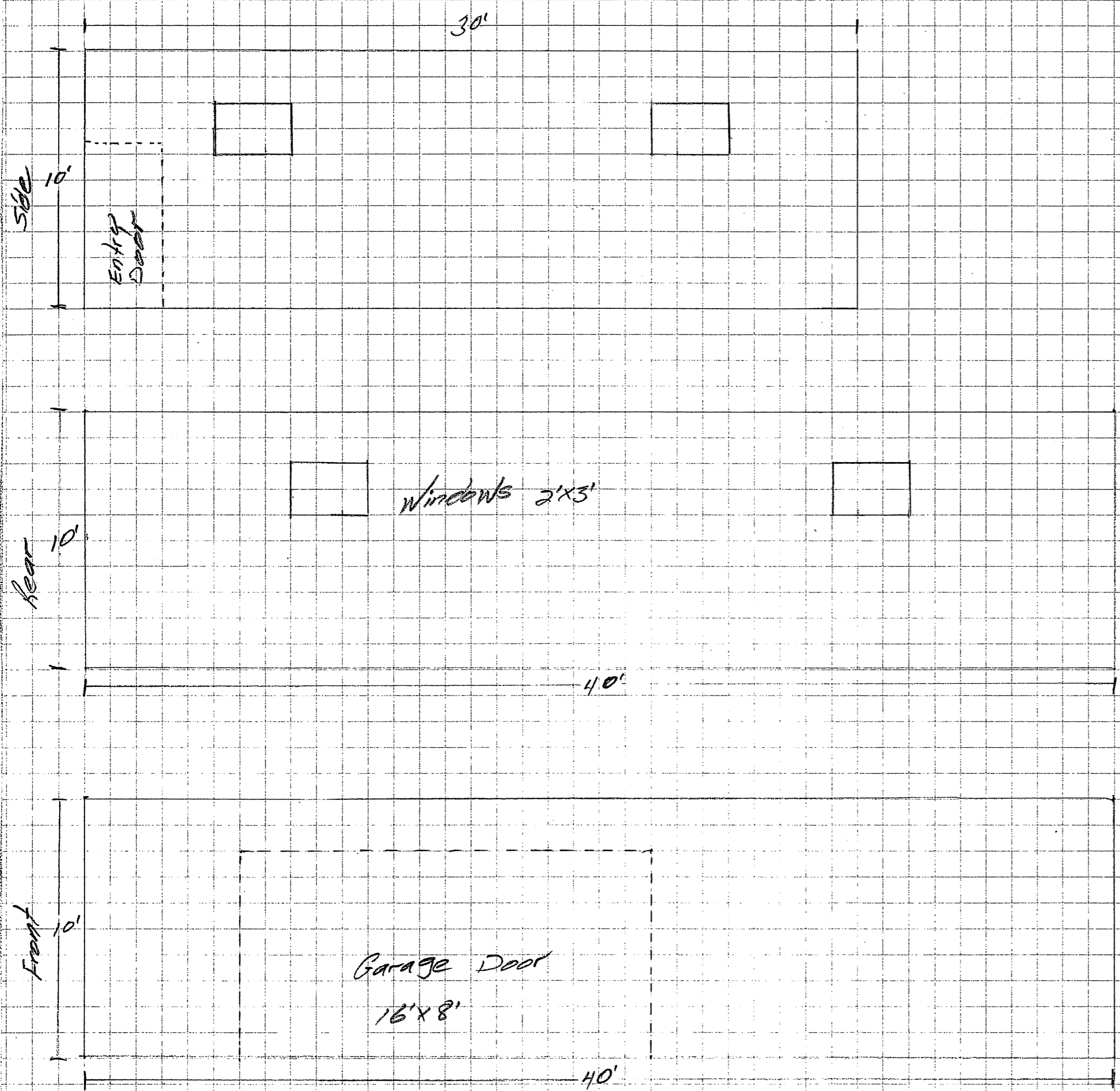
GARAGE
Door
16' x 8'

Entry
Door

40'

FRONT





CONDITIONAL USE - ACCESSORY GARAGE

