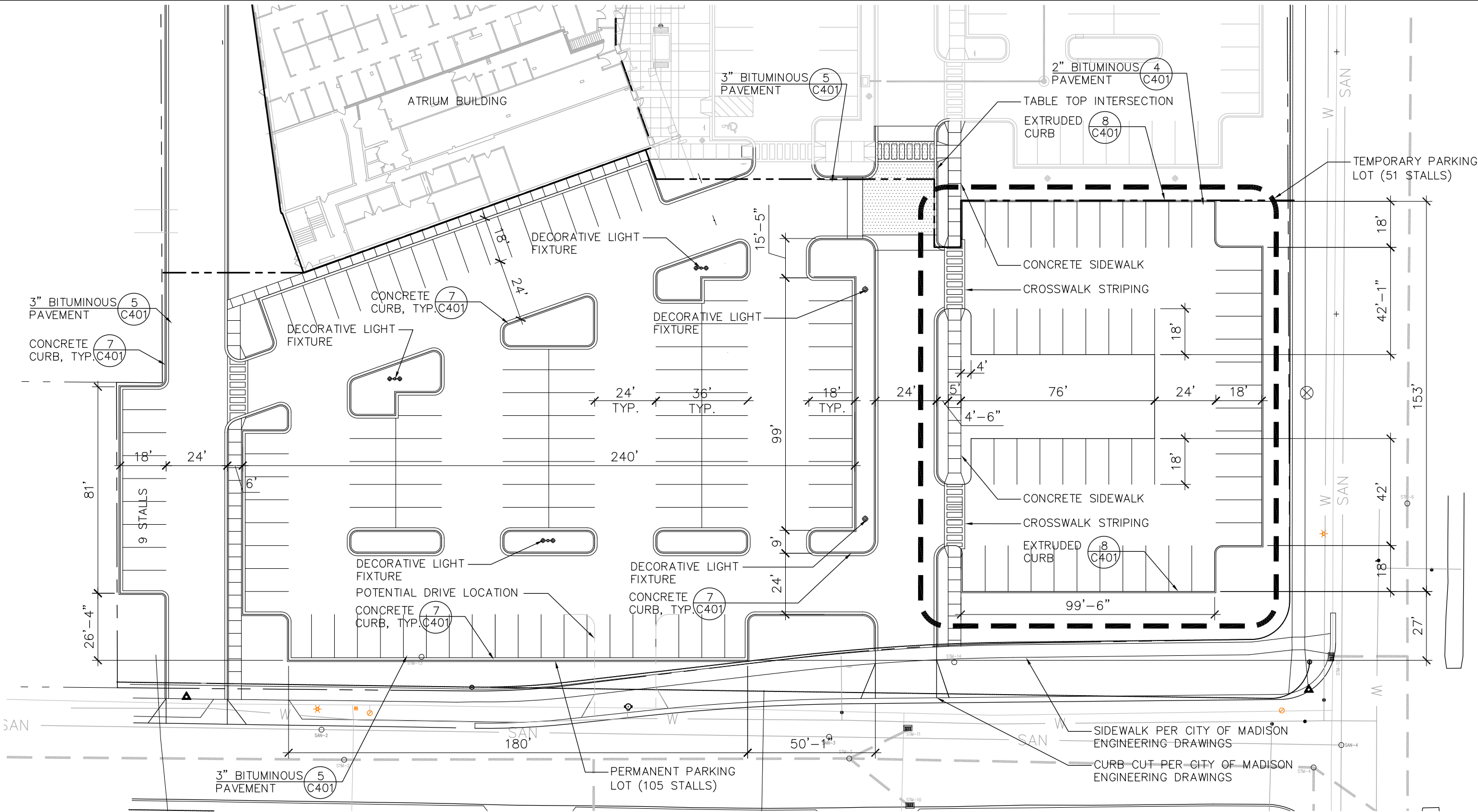


File: P:\projects\2300\2349.02-Villager\Map\PH2\CAD\P-SP.dwg Layout: SITE PLAN User: phannon Plotted: May 12, 2010 - 9:39am

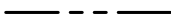


LEGEND

TABLE TOP INTERSECTION



PROJECT LIMIT LINE



SINGLE HEADED LIGHT FIXTURE



DOUBLE HEADED LIGHT FIXTURE



NOTES

1. ALL WRITTEN DIMENSIONS SUPERSEDE SCALED DIMENSIONS
2. CONTRACTOR SHALL INSTALL EXPANSION JOINTS BETWEEN CONCRETE PAVING, CURBS, AND EXISTING PAVING OR STRUCTURES
3. THE CONTRACTOR IS RESPONSIBLE FOR SITE STAKING. ALL PROPOSED SITE FEATURES SHALL BE STAKED IN FIELD PRIOR TO CONSTRUCTION. ALL CURVES SHALL BE SMOOTH AND CONTINUOUS WITH CAREFULLY MATCHED TANGENTS.
4. MAXIMUM SLOPE AT ALL WALKS 1:20. MAXIMUM SLOPE AT HANDICAP RAMPS 1:12.
5. ALL DIMENSIONS ARE TO FACE OF CURB OR EDGE OF PAVEMENT.
6. INTERIOR PARKING LOT ISLANDS TO HAVE 3'-0" CORNER RADIUS

Professional Seal

Revision Date

Project Name

The  
Villager

Phase II  
Demolition  
and  
Temporary  
Parking

Schreiber/Anderson  
Associates, Inc.

Drawn By: PH  
Checked By: JL  
File:  
Issued For: Approval  
Date: 0512|2010  
Project No. 2349.02

Sheet Title

Site Layout Plan

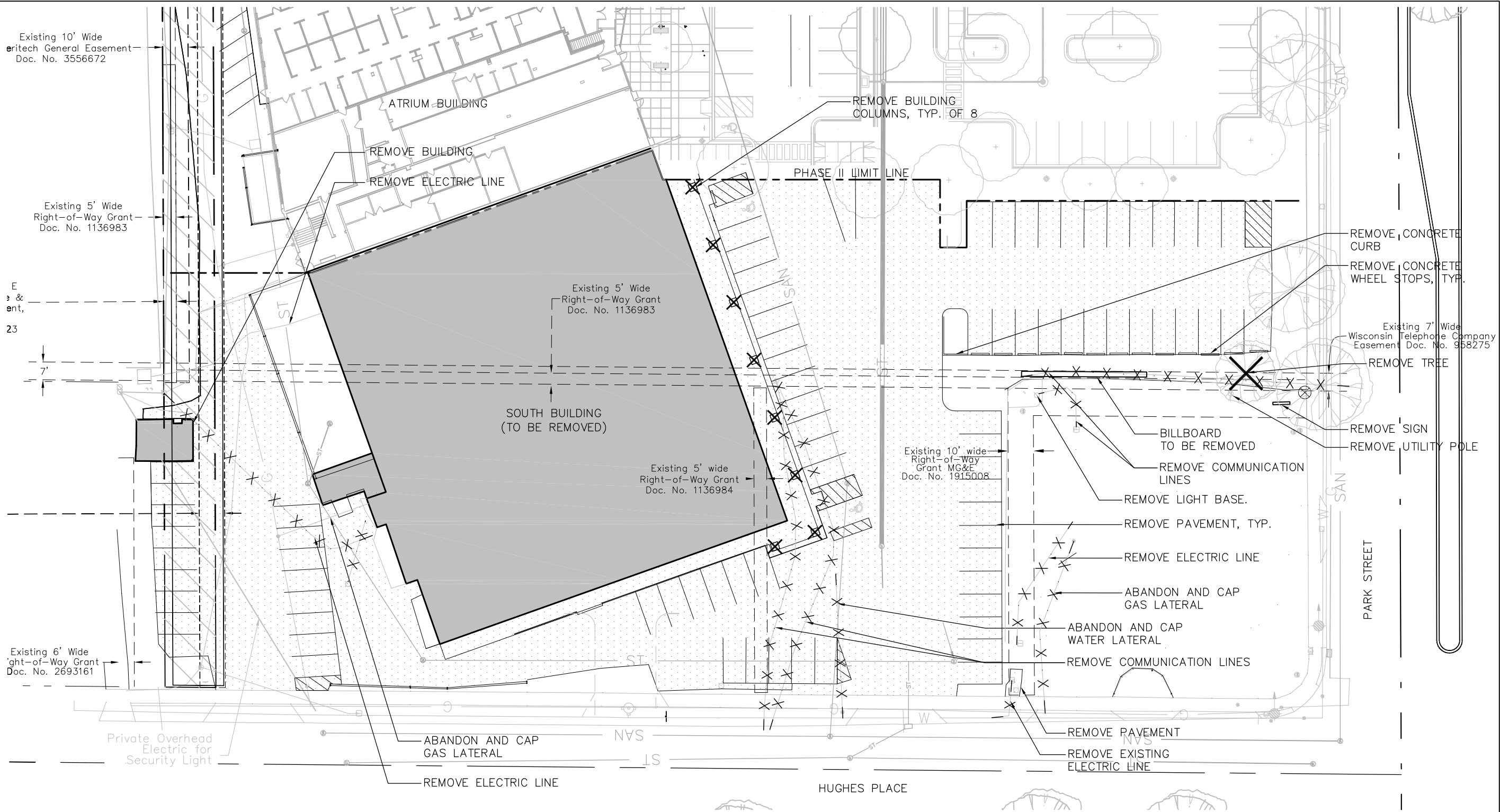


0 10 20 40

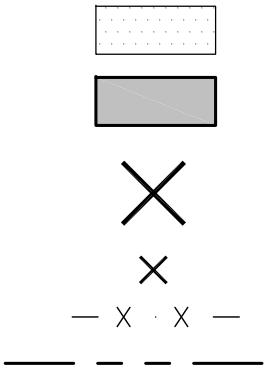
Sheet Number

C301


File: P:\projects\2300\2349.02-VillagerMailPH2\CAD\PH-Demo.dwg Layout: Demo User: phannon Plotted: May 11, 2010 - 5:31pm




- LEGEND
- REMOVE PAVEMENT
  - REMOVE BUILDING
  - REMOVE TREE
  - REMOVE OBJECT
  - REMOVE UTILITY
  - PROJECT LIMIT LINE



- NOTES
1. CALL DIGGERS HOTLINE TO LOCATE UTILITIES PRIOR TO BEGINNING WORK ON SITE 1.800.242.8511.
  2. UNLESS OTHERWISE NOTED, ALL ITEMS DESIGNATED FOR DEMOLITION SHALL BE REMOVED AND DISPOSED OF OFF-SITE.
  3. ALL EXISTING UTILITIES NOT USED SHALL BE ABANDONED PER CITY OF MADISON SPECIFICATIONS, CONTRACTOR SHALL PAY FOR ALL PERMITS AND FEES.
  4. ALL WORK PERFORMED IN THE RIGHT-OF-WAY SHALL BE PERFORMED BY A CITY LICENSED CONTRACTOR.
  5. SEE CITY OF MADISON PLANS FOR HUGHES PLACE RECONSTRUCTION, SIDEWALK DEMOLITION AND UTILITIES IN THE RIGHT-OF-WAY.



**SAA**  
SCHREIBER / ANDERSON  
ASSOCIATES, INC.  
717 John Nolen Drive  
Madison, WI 53713  
Ph. 608.255.0800  
Fx. 608.255.7750  
www.saa-madison.com



**STRANG**  
Professional Seal

Revision	Date

Project Name

## The Villager

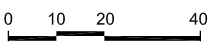

### Phase II Demolition and Temporary Parking

Schreiber/Anderson Associates, Inc.

Drawn By:	PH
Checked By:	JL
File:	
Issued For:	Approval
Date:	0512 2010
Project No.	2349.02

Sheet Title

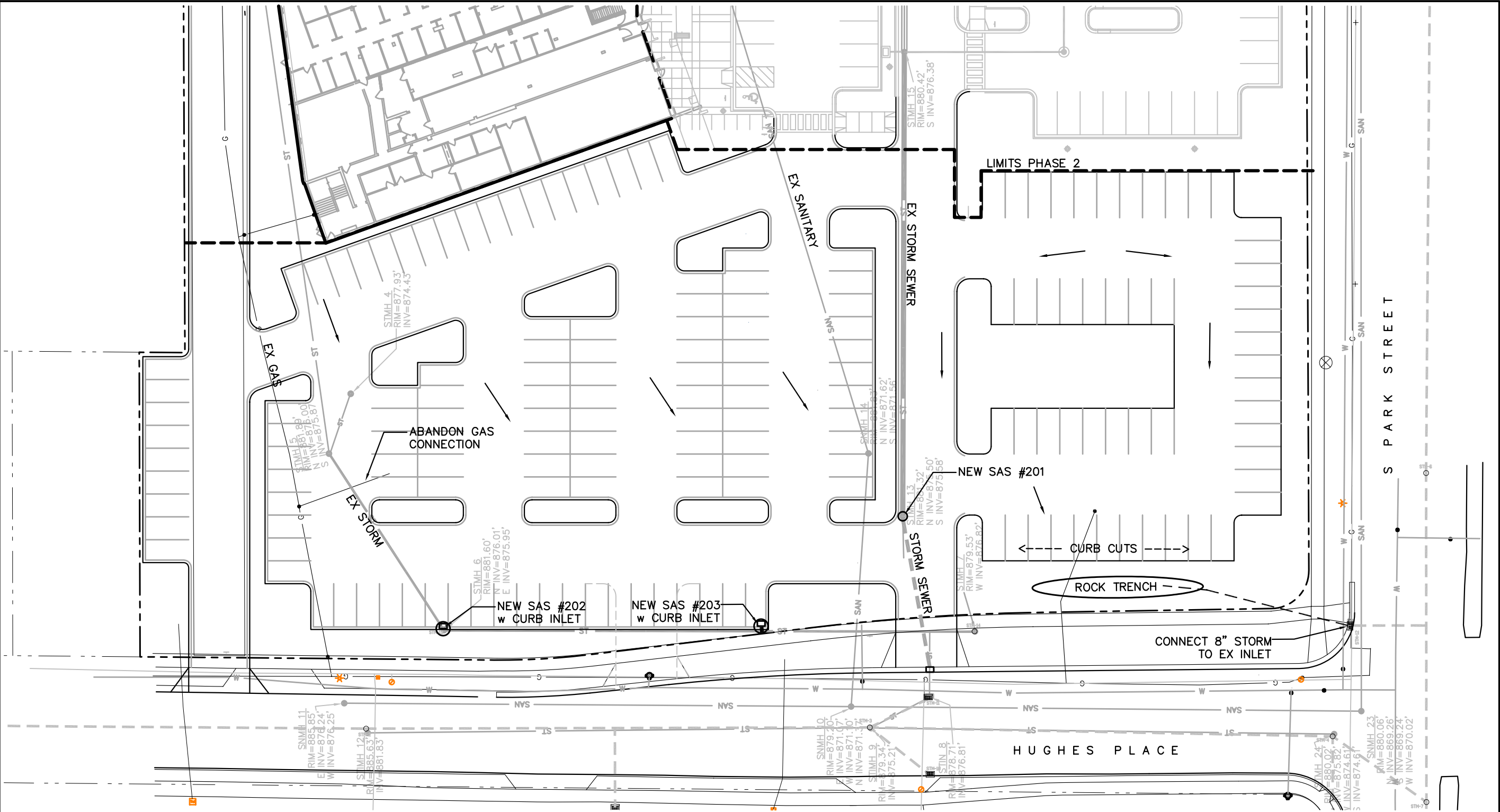
### Demolition Plan



Sheet Number

# C201

File: P:\projects\2300\2349.02-Villager\PH2\CAD\P-Utility.dwg Layout: C501 Utility User: rpietz Plotted: May 12, 2010 -- 11:09am



**LEGEND**

	GRADING
	EX SANITARY
	EX WATER
	PROP. STORM SEWER
	PHASE 2 LIMITS

**NOTES**

1. ALL WRITTEN DIMENSIONS SUPERSEDE SCALED DIMENSIONS
2. CONTRACTOR SHALL INSTALL EXPANSION JOINTS BETWEEN CONCRETE PAVING, CURBS, AND EXISTING PAVING OR STRUCTURES
3. THE CONTRACTOR IS RESPONSIBLE FOR SITE STAKING. ALL PROPOSED SITE FEATURES SHALL BE STAKED IN FIELD PRIOR TO CONSTRUCTION. ALL CURVES SHALL BE SMOOTH AND CONTINUOUS WITH CAREFULLY MATCHED TANGENTS.
4. MAXIMUM SLOPE AT ALL WALKS 1:20. MAXIMUM SLOPE AT HANDICAP RAMPS 1:12.
5. ALL DIMENSIONS ARE TO FACE OF CURB OR EDGE OF PAVEMENT.
6. INTERIOR PARKING LOT ISLANDS TO HAVE 3'-0" CORNER RADIUS

SCHREIBER / ANDERSON ASSOCIATES, INC.  
717 John Nolen Drive  
Madison, WI 53713  
Ph. 608.255.0800  
Ft. 608.255.7750  
www.saa-madison.com

Professional Seal

Revision	Date

Project Name

The Villager

Phase II Demolition and Temporary Parking

Schreiber/Anderson Associates, Inc.

Drawn By: PH  
Checked By: JL  
File:  
Issued For: Approval  
Date: 0512|2010  
Project No. 2349.02

Sheet Title

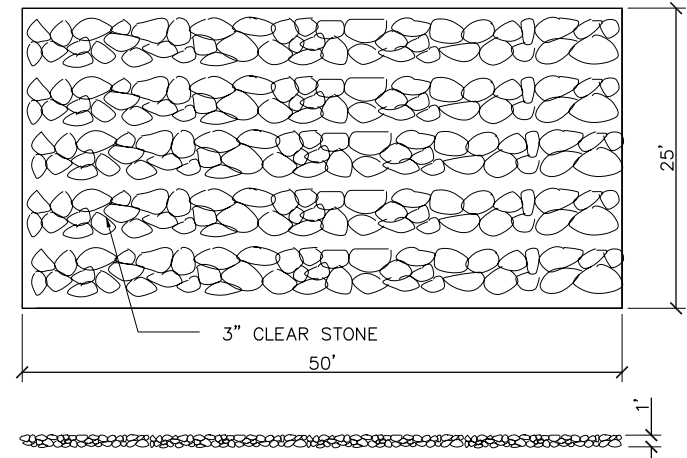
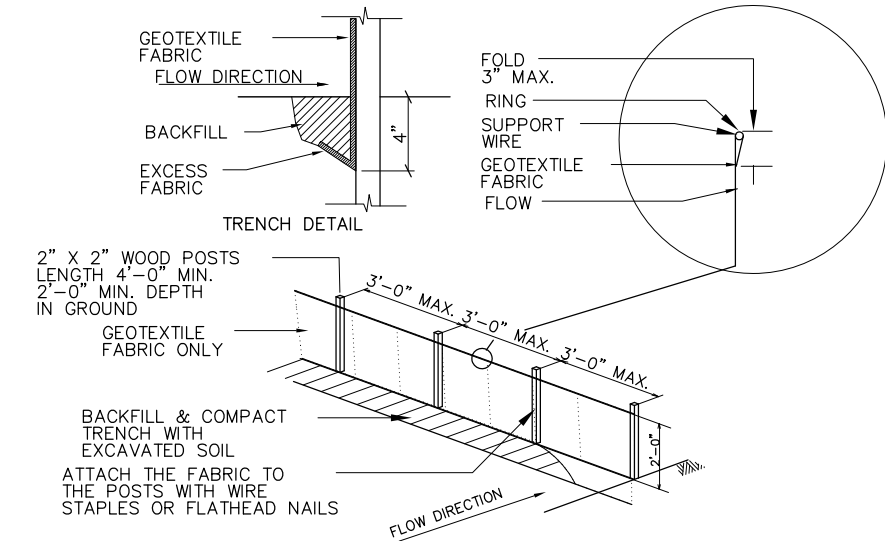
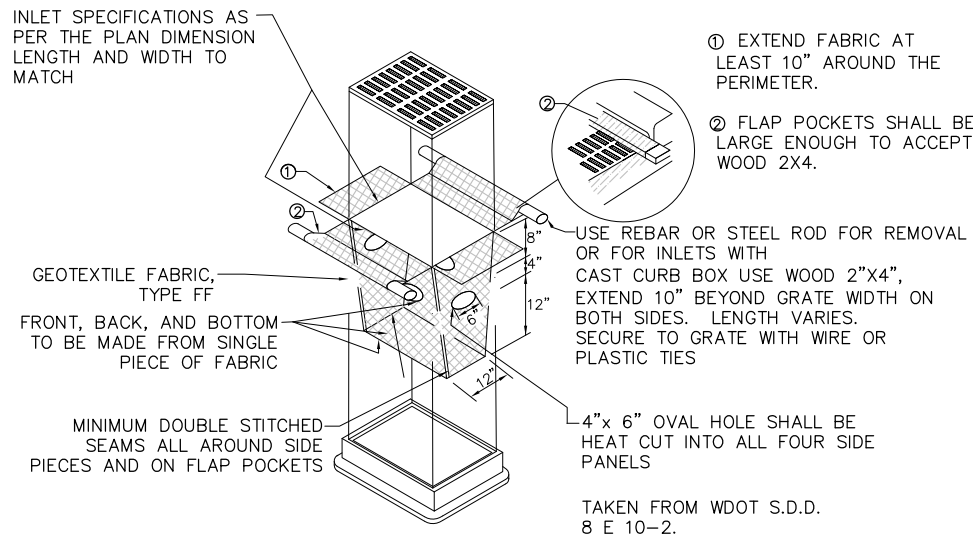
Utility Plan

Sheet Number

C501



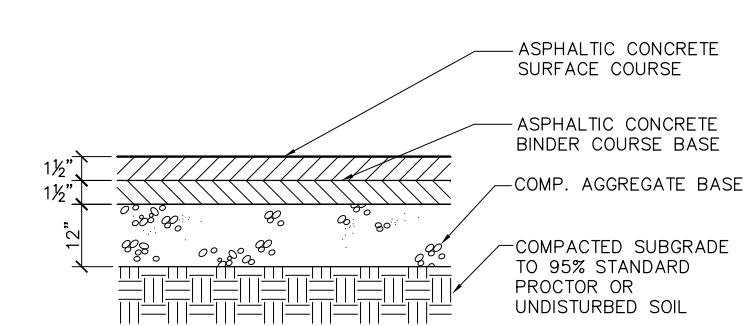
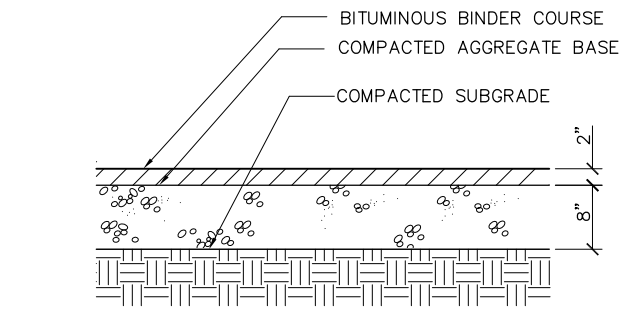
File: P:\projects\2300\2349.02-VillagerMail\PH2\CAD\P-D.dwg Layout: Layout1 User: phannon Plotted: May 12, 2010 - 9:08am



1 INLET PROTECTION, TYPE D  
C401 NTS

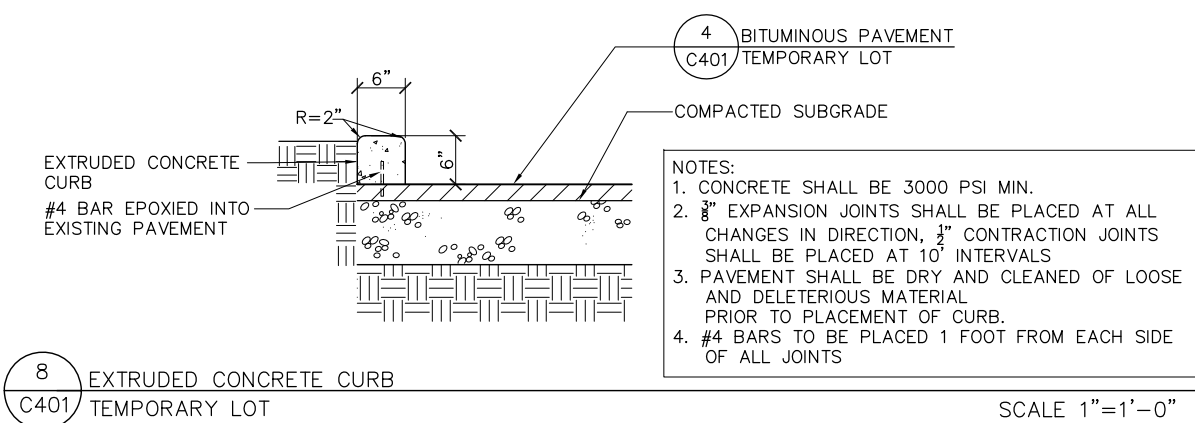
2 SILT FENCE DETAIL  
C401 NTS

3 TRACK MAT DETAIL  
C401 SCALE 1/8" = 1'-0"

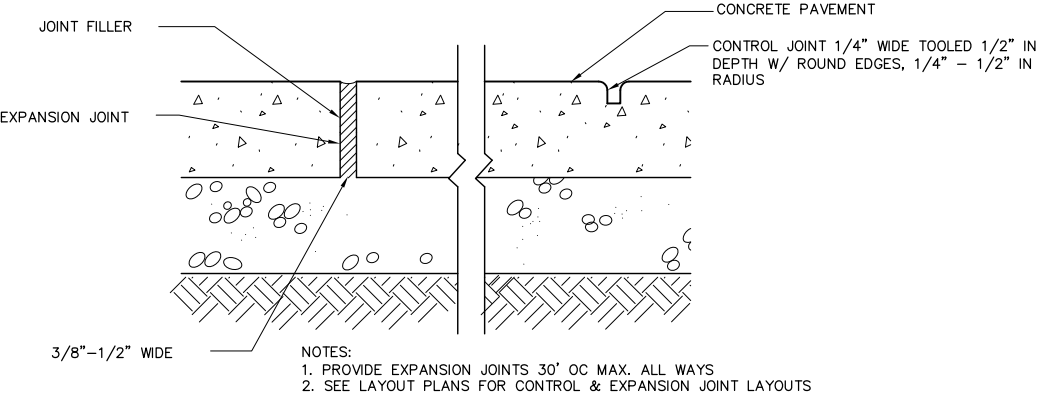


4 BITUMINOUS PAVEMENT - TEMPORARY LOT  
C401 SECTION SCALE 1" = 1'-0"

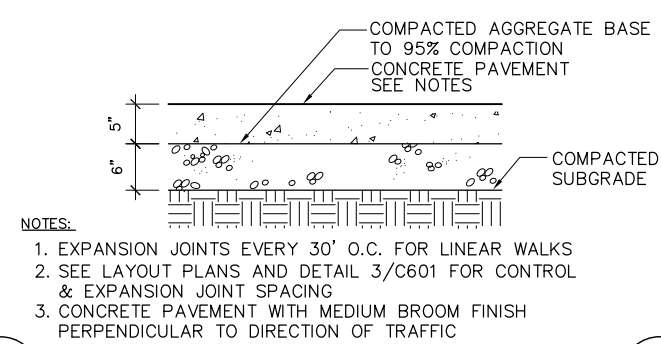
5 3" BITUMINOUS PAVEMENT - PERMANENT LOT  
C401 SECTION SCALE 1"=1'-0"



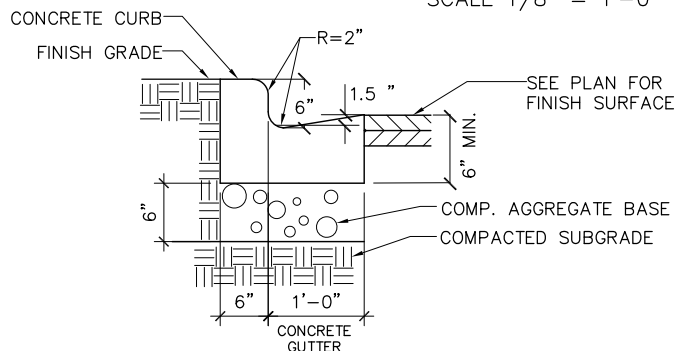
8 EXTRUDED CONCRETE CURB C401 TEMPORARY LOT SCALE 1"=1'-0"



9 EXPANSION/CONTROL JOINT C401 SCALE 1"=1'-0"



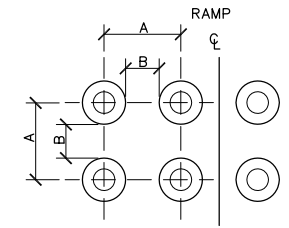
6 CONCRETE PAVEMENT - PEDESTRIAN LOAD C401 SCALE 1"=1'-0"



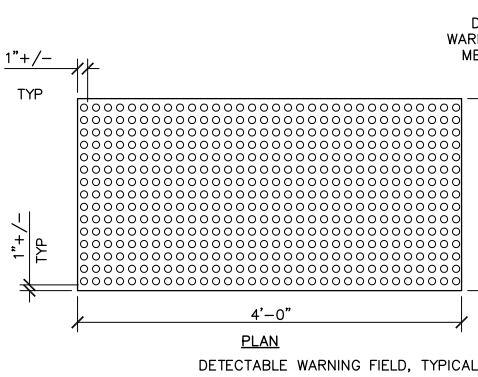
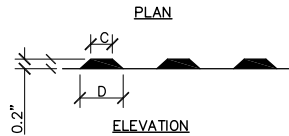
7 CONCRETE CURB AND GUTTER - PERMANENT LOT C401 SECTION SCALE 1" = 1'-0"

	MIN	MAX
A	1.6"	2.4"
B	0.65"	1.5"
C	*	*
D	0.9"	1.4"

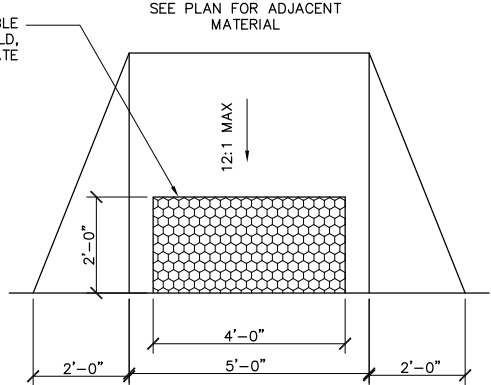
\* THE C DIMENSION IS 50% TO 65% OF 'D'



TRUNCATED DOMES  
DETECTABLE WARNING PATTERN



10 ACCESSIBLE RAMP C401 SCALE 1"=1'-0"



## The Villager

### Phase II Demolition and Temporary Parking

Schreiber/Anderson Associates, Inc.

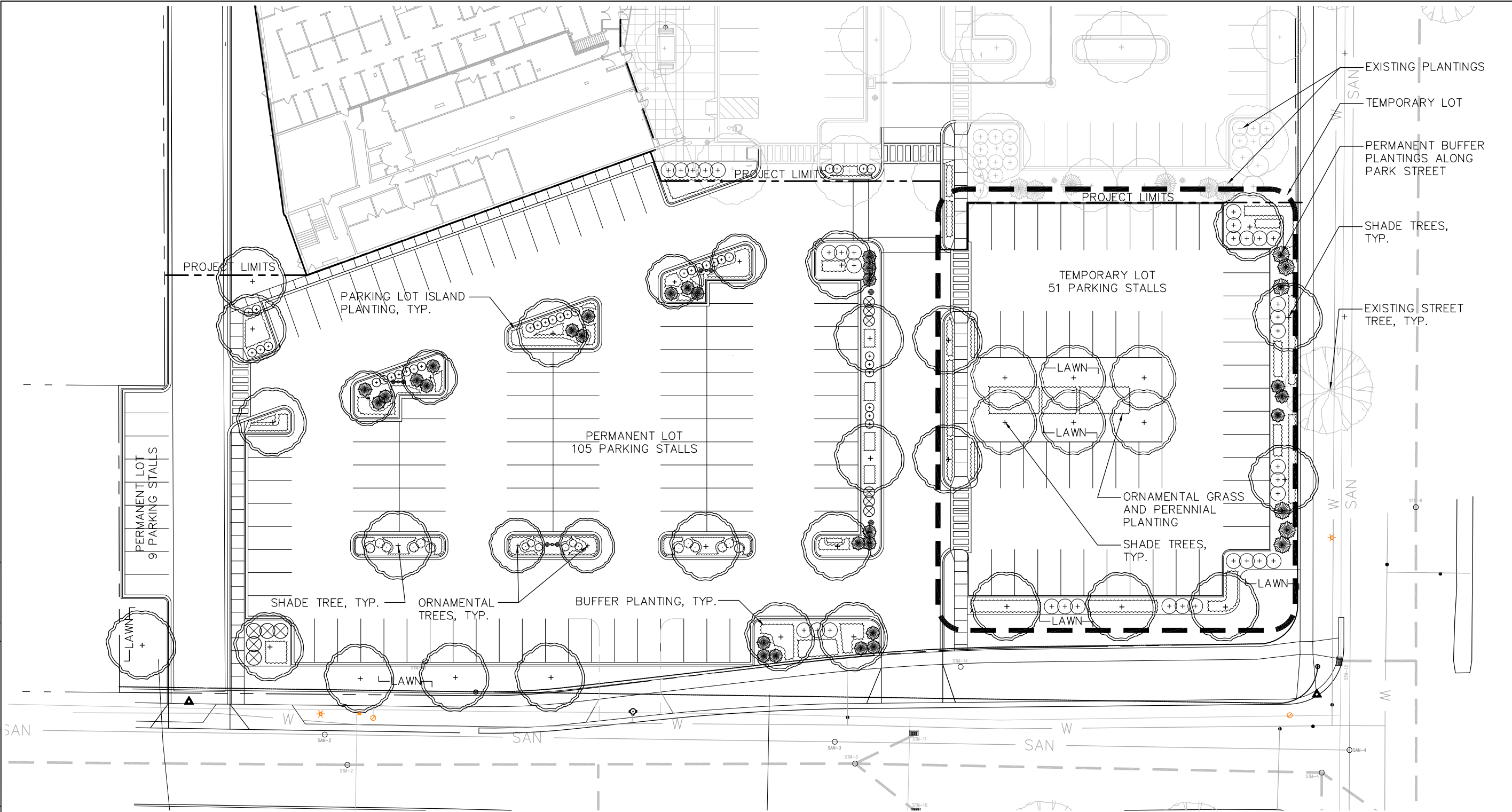
Drawn By: PH  
Checked By: JL  
File:  
Issued For: Approval  
Date: 0512|2010  
Project No. 2349.02

Sheet Title  
**Details**

Sheet Number

# C401

File: P:\projects\2300\2349.02-VillagerMailPH2\CAD\P-LS.dwg Layout: L101 User: phannon Plotted: May 11, 2010 - 5:29pm



LANDSCAPE POINTS – PERMANENT LOT:

NUMBER OF TREES REQUIRED:		TABULATION OF POINTS PROVIDED:			
NUMBER OF PARKING STALLS	114	CANOPY TREES	35pts	8	280
LOADING AREAS	0	DECIDUOUS SHRUBS	2pts	77	154
CANOPY TREES REQUIRED	9	EVERGREEN SHRUBS	3pts	24	72
NUMBER OF LANDSCAPE POINTS REQUIRED:		EVERGREEN TREES	15pts	0	0
POINTS REQUIRED PER PARKING STALLS	512	ORNAMENTAL TREES	15pts	4	60
POINTS REQUIRED PER LOADING AREA	0	TOTAL POINTS			
TOTAL POINTS REQUIRED	512	566 pts			

LANDSCAPE POINTS – TEMPORARY LOT:

NUMBER OF TREES REQUIRED:		TABULATION OF POINTS PROVIDED:			
NUMBER OF PARKING STALLS	51	CANOPY TREES	35pts	4	140
LOADING AREAS	0	DECIDUOUS SHRUBS	2pts	22	44
CANOPY TREES REQUIRED	4	EVERGREEN SHRUBS	3pts	9	27
NUMBER OF LANDSCAPE POINTS REQUIRED:		EVERGREEN TREES	15pts	0	0
POINTS REQUIRED PER PARKING STALLS	243	ORNAMENTAL TREES	15pts	6	90
POINTS REQUIRED PER LOADING AREA	0	TOTAL POINTS			
TOTAL POINTS REQUIRED	243	301 pts			

The Villager

Phase II  
Demolition  
and  
Temporary  
Parking

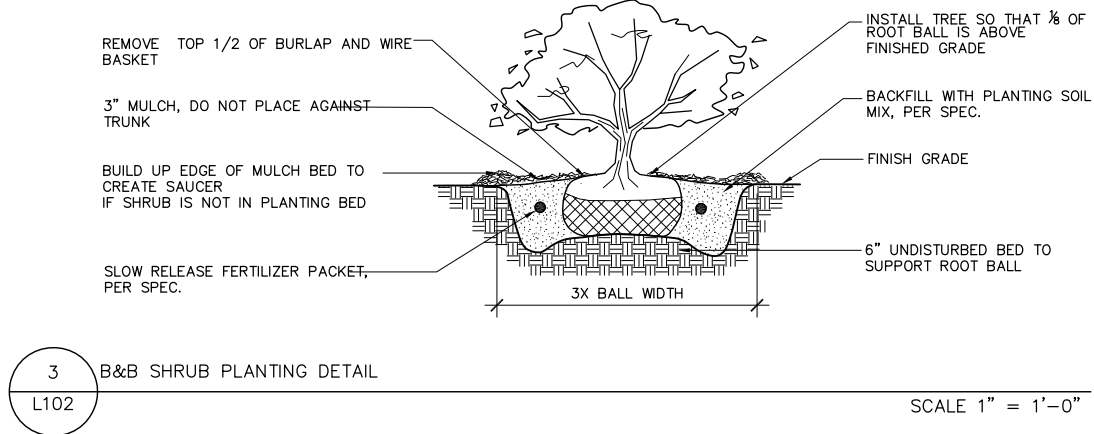
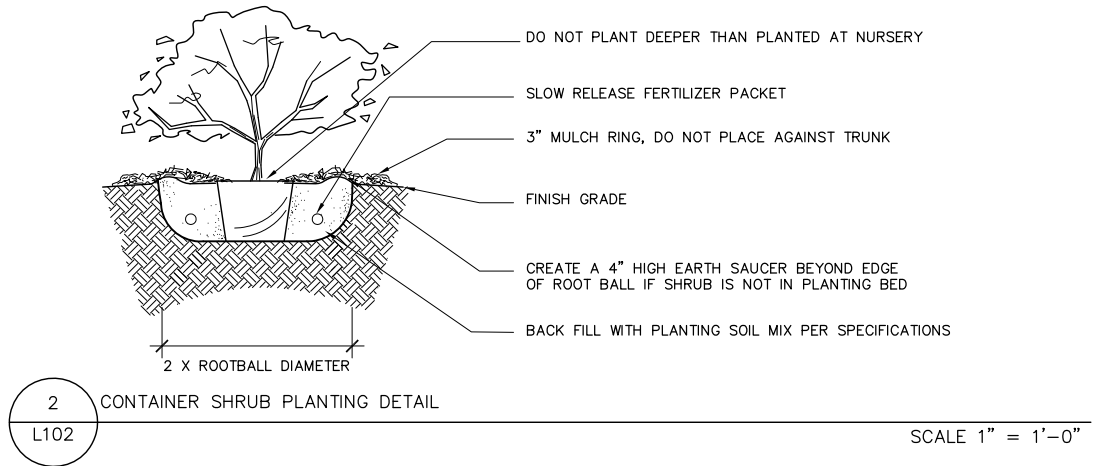
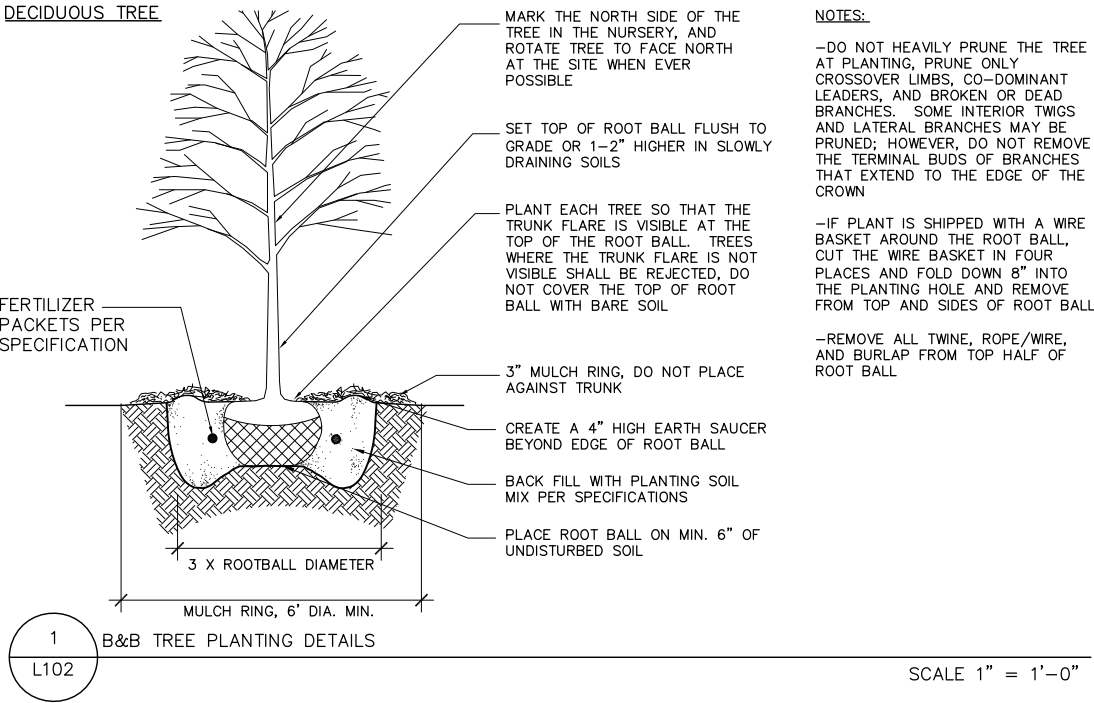
Schreiber/Anderson  
Associates, Inc.

Drawn By: PH  
Checked By: JL  
File:  
Issued For: Approval  
Date: 0512|2010  
Project No. 2349.02



File: P:\projects\2300\2349.02-VillagerMailPH2\CAD\P-L102.dwg Layout: L102 User: phannon Plotted: May 11, 2010 - 5:30pm

DECIDUOUS TREE



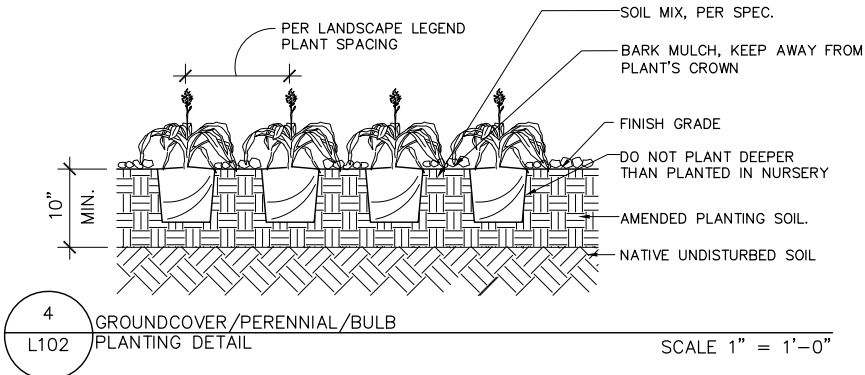
LANDSCAPE PLANT LEGEND

Symbol	Botanical name	Common Name	Size	Root	Quantity	Comments	WI Native
TREES							
AF	Acer x Freemannii 'Marmo'	Marmo Maple	2" Cal.	B&B	x	Matched sizes	*
AG	Amelanchier x grandiflora 'Autumn Brilliance'	Autumn Brilliance Serviceberry	1.5" Cal.	B&B	x	Multi-stem	*
CV	Crataegus crusgalli var. inermis	Thornless Cockspur Hawthorn	1.5" Cal.	B&B	x		*
GT	Gleditsia triacanthos var. inermis	Thornless Honeylocust	2.5" Cal.	B&B	x		*
PC	Pyrus calleryana 'Chanticleer'	Chanticleer Flowering Pear	2" Cal.	B&B	x		
TC	Tilia cordata 'Chancellor'	Chancellor Littleleaf Linden	2" Cal.	B&B	x		*

EVERGREEN TREES/SHRUBS							
Bm	Buxus microphylla 'Green Velvet'	Green Velvet Boxwood	3 Gal.	CG	x		*
Js	Juniperus sabina 'Arcadia'	Arcadia Juniper	3 Gal.	CG	x		*
Jv	Juniperus virginiana 'Grey Owl'	Grey Owl Juniper	5 Gal.	CG	x		*

DECIDUOUS SHRUBS							
Cl	Clethra alnifolia 'Hummingbird'	Hummingbird Clethra	15"-24" Ht.	Cont.	x		*
Ds	Diervilla sessilifolia 'Butterfly'	Butterfly Bush Honeysuckle	3 Gal.	Cont.	x		*
Caa	Cotoneaster apiculatus	Cranberry Cotoneaster	12"-15" Ht.	Cont.	x		
Ra	Rhus aromatica 'Gro-Low'	Gro-Low Fragrant Sumac	3 Gal.	Cont.	x		
Rn	Rosa x 'Nearly Wild'	Nearly Wild Rose	15"-24" Ht.	Cont.	x		
Vj	Viburnum x juddii	Judd Viburnum	5 Gal.	Cont.	x		*

PERENNIALS / GROUNDCOVERS / GRASSES							
cp	Carex pennsylvanica	Pennsylvania Sedge	4"	Cont.	x	18" spacing	*
ef	Euonymus fortunei 'Wo-long Ghost'	Wo-long Ghost Wintercreeper	4"	Cont.	x	18" spacing	
ep	Echinacea purpurea 'Kim's Knee High'	Kim's Knee High Coneflower	1 Gal.	Cont.	x	24" spacing	*
he	Hemerocallis 'Pardon Me'	Pardon Me Daylily	4"	Cont.	x	24" spacing	
nf	Nepeta faassenii 'Kit Kat'	Kit Kat Catmint	1 Gal.	Cont.	x	24" spacing	*
sm	Salvia 'May Night'	May Night Salvia	4"	Cont.	x	24" spacing	
rf	Rudbeckia fulgida 'Sullivantii'	Sullivantii Black Eyed Susan	4"	Cont.	x	24" spacing	
sh	Sporobolus heterolepis	Prairie Dropseed	1 Gal.	Cont.	x	30" spacing	*
ss	Spodiopogon sibericus	Frost Grass	1 Gal.	Cont.	x	36" spacing	*



The Villager

Phase II  
Demolition  
and  
Temporary  
Parking

Schreiber/Anderson  
Associates, Inc.

Drawn By: PH  
Checked By: JL  
File:  
Issued For: Approval  
Date: 0512|2010  
Project No. 2349.02

Sheet Title

Landscape  
Plant Schedule



0 10 20 40

Sheet Number

L102