

SITE STATISTICS

SITE AREA	14,772 SF
BUILDING FOOTPRINT	3,268 SF
IMPERVIOUS SURFACE	5,759 SF
TOTAL IMPERVIOUS SURFACE	9,027 SF
IMPERVIOUS SURFACE RATIO	0.61
BUILDING HEIGHT	29'-6"
BUILDING AREA	8,650 SF
EXISTING FIRE HYDRANTS	(1) AT OHIO ST. AND ATWOOD AVE. DISTANCE: 160' (1) AT HUDSON AVE. AND ATWOOD AVE. DISTANCE: 255'

LEGAL DESCRIPTION

HUDSON PARK W 1/2 LOT 1 ALL LOTS 2 & 3 BLK 1 EX N FOR STREET

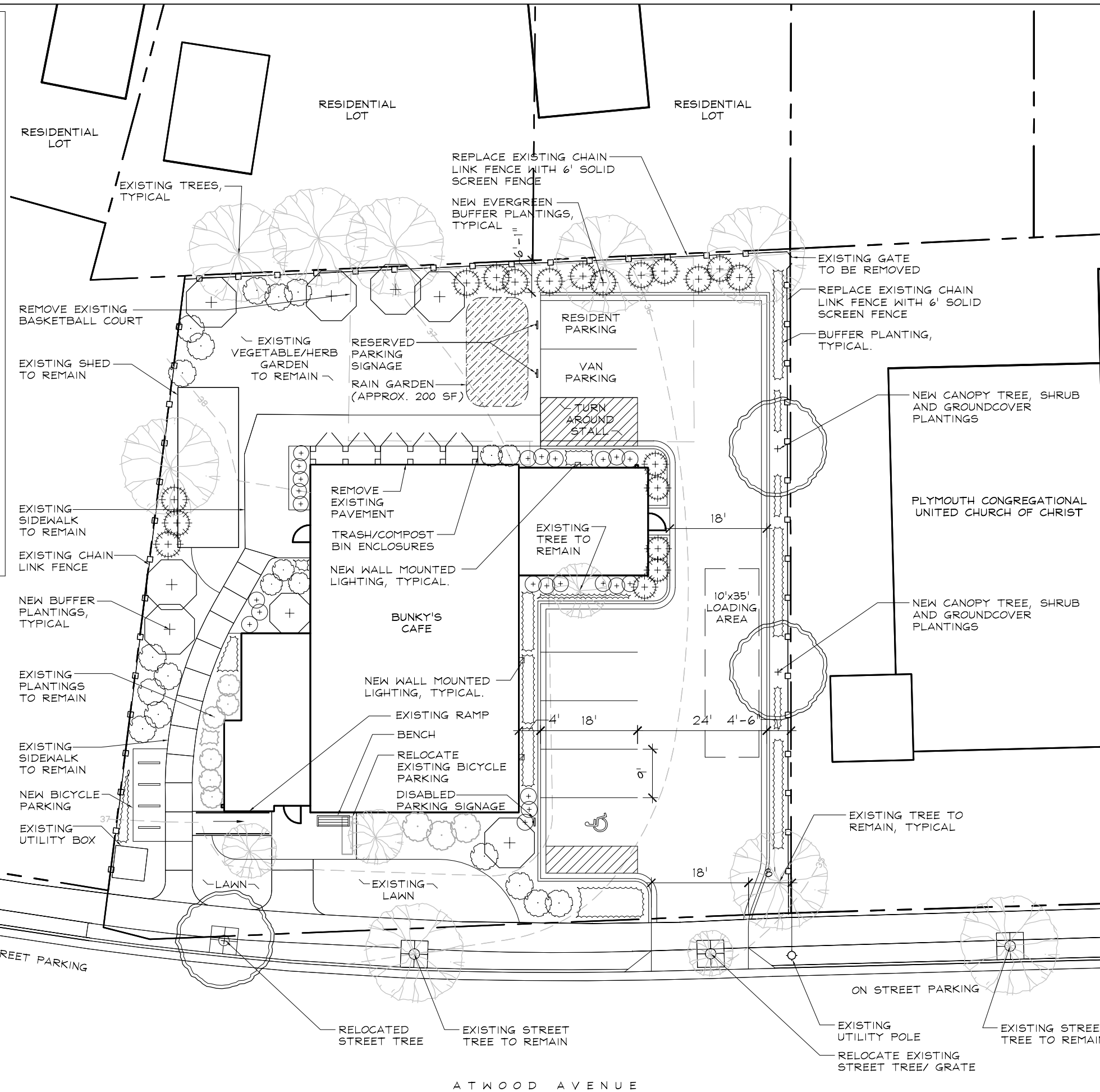
LANDSCAPE POINT SCHEDULE

CITY OF MADISON REQUIREMENTS

SURFACE PARKING STALLS	7
STORAGE AREA/300 SF	4.32 SF
CANOPY TREES REQUIRED	1
REQUIRED LANDSCAPE POINTS	39.6

LANDSCAPE POINT SCHEDULE

REQUIRED CANOPY TREES	1	TREES	X	0	PTS.	=	0
EXISTING CANOPY TREES	3	TREE	X	35	PTS.	=	105
CANOPY TREES 2-2.5" CAL.	2	TREES	X	35	PTS.	=	70
DECIDUOUS SHRUBS	23	SHRUBS	X	2	PTS.	=	46
EVERGREEN SHRUBS	13	SHRUBS	X	3	PTS.	=	39
TOTAL POINTS:							260
ADDITIONAL POINTS PROVIDED:							220.4



Professional Seal

Revision	Date
City Comments	12/03/08

Project Name

**Bunky's Cafe
 Rezoning**

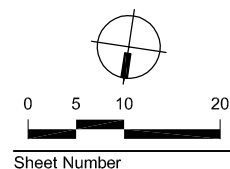
**NOT FOR
 CONSTRUCTION**

2425 Atwood Ave.
 Madison, WI

Drawn By:	PH
Checked By:	TA
File:	P-SP
Issued For:	Approval
Issue Date:	10/15/2008
Project No.	2346

Sheet Title

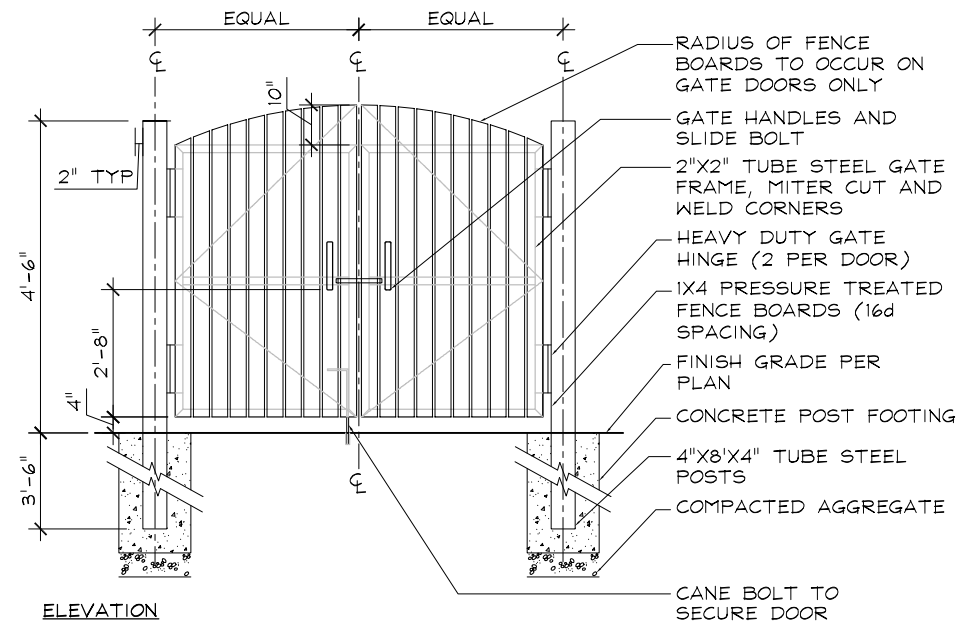
Site Plan



Sheet Number

C1.0

P:\projects\2300\2346-BunkyCafe\CAD\SP.dwg Dec 03, 2008 02:16pm phannon



1
C2.0

TRASH ENCLOSURE

SCALE: 1/2"=1'-0"

LANDSCAPE PLANT LEGEND

Symbol	Botanical name	Common Name	Size	Root	Quantity	Comments	WI Native
DECIDUOUS TREES							
AF	<i>Acer x freemanii</i> 'Jeffersred'	Jeffersred Freeman Maple	2" Cal.	B#B	-		*
AL	<i>Amelanchier laevis</i>	Allegheny Serviceberry	7'-8' Ht.	B#B	-	Clump	*
CM	<i>Cornus mas</i> 'Golden Glory'	Golden Glory Dogwood	6'-7' Ht.	B#B	-	Clump	*

EVERGREEN BUFFER PLANTINGS							
Tc	<i>Tsuga canadensis</i> 'Gretnsch White'	Gretnsch White Hemlock	4'-5' Ht.	B#B	-		*
To	<i>Thuja occidentalis</i> 'Emerald'	Emerald Arborvitae	5'-7' Ht.	CG	-		*

EVERGREEN SHRUBS							
Jv	<i>Juniperus virginiana</i> 'Grey Owl'	Grey Owl Juniper	3 Gal.	CG	-	Spreading	*
Jc	<i>Juniperus chinensis</i> 'Old Gold'	Old Gold Juniper	5 Gal.	CG	-	Spreading	*

DECIDUOUS SHRUBS							
Cl	<i>Clethra alnifolia</i> 'Hummingbird'	Hummingbird Clethra	2 Gal.	CG	-	Dwarf form	*
Cc	<i>Cornus x</i> 'Cardinal'	Cardinal Red Twig Dogwood	5 Gal.	CG	-		*
Hv	<i>Hamamelis virginiana</i>	Common Witchhazel	5 Gal.	CG	-		*
Iv	<i>Itea virginica</i> 'Henry's Garnet'	Henry's Garnet Sweetspire	5 Gal.	CG	-		*
Sa	<i>Salix purpurea</i> 'Nana'	Dwarf Arctic Blue Willow	3 Gal.	CG	-	Dwarf form	*
Sy	<i>Symphoricarpos albus</i>	Snowberry	3 Gal.	CG	-		*
Vd	<i>Viburnum dentatum</i> 'Chicago Lustre'	Chicago Lustre Viburnum	5 Gal.	CG	-		*
Vj	<i>Viburnum x</i> 'Juddii'	Judd Viburnum	5 Gal.	CG	-		*

PERENNIALS / GRASSES / GROUNDCOVERS							
ba	<i>Baptisia australis</i>	Wild Blue Indigo	4.5"	CG	-		*
ca	<i>Calamagrostis x acutiflora</i> 'Karl Foerster'	Karl Foerster Feather Reed Grass	1 Gal.	CG	-		*
ls	<i>Liatris spicata</i>	Spiked Gayfeather	4.5"	CG	-		*
md	<i>Monarda didyma</i>	Bee Balm	1 Gal.	CG	-		*
pa	<i>Perovskia atriplicifolia</i>	Russian Sage	1 Gal.	CG	-		*
pv	<i>Panicum virgatum</i> 'Northwind'	Northwind Switch Grass	1 Gal.	CG	-		*
rh	<i>Rudbeckia hirta</i>	Black-Eyed-Susan	1 Gal.	CG	-		*
sh	<i>Sporobolus heteralipis</i>	Prairie Dropseed	1 Gal.	CG	-		*

RAIN GARDEN PLANT SCHEDULE							
ap	<i>Aster puniceus</i>	Purple Stemmed Aster	4.5"	CG	-		*
cp	<i>Caltha palustris</i>	Marsh Marigold	1 Gal.	CG	-		*
em	<i>Eupatorium maculatum</i>	Joe-pye weed	4.5"	CG	-		*
hg	<i>Helianthus grosseratus</i>	Big Toothed Sunflower	1 Gal.	CG	-		*
ls	<i>Liatris spicata</i>	Pale Spiked Lobelia	1 Gal.	CG	-		*
cp	<i>Carex pennsylvanica</i>	Pennsylvania Sedge	1 Gal.	CG	-		*
cc	<i>Carex comosa</i>	Bottlebrush Sedge	1 Gal.	CG	-		*
cs	<i>Carex stipa</i>	Tussock Sedge	1 Gal.	CG	-		*



Professional Seal

Revision Date
City Comments 12/03/08

Project Name

Bunky's Cafe
Rezoning

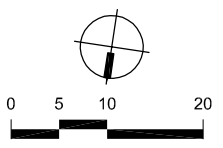
NOT FOR CONSTRUCTION

2425 Atwood Ave.
Madison, WI

Drawn By: PH
Checked By: TA
File: P-SP
Issued For: Approval
Issue Date: 10/15/2008
Project No. 2346

Sheet Title

Site Plan



Sheet Number

C2.0