

# ARCHITECTURAL SITE PLAN

## 2550 UNIVERSITY AVENUE APARTMENTS

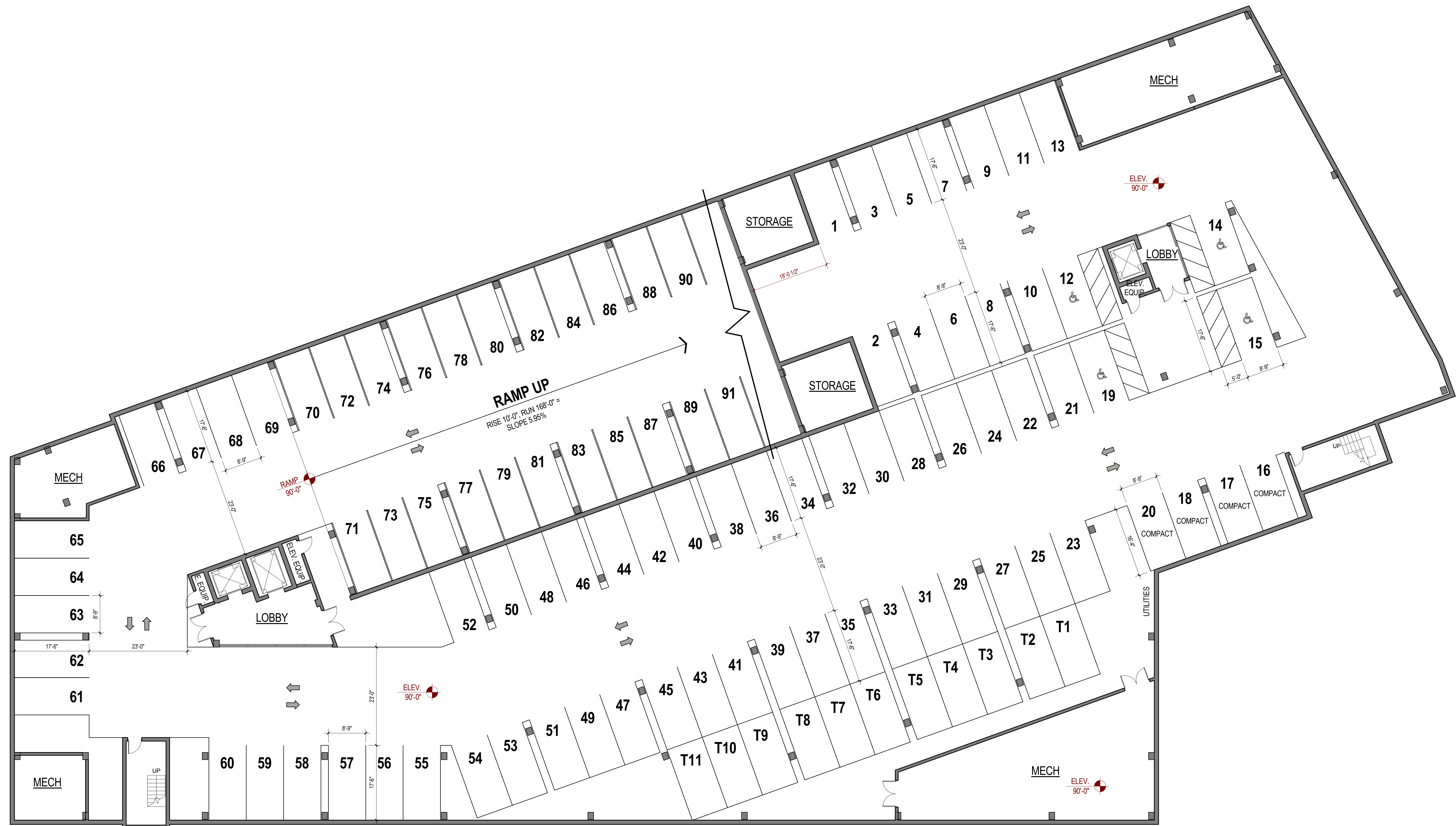




VANDEWALLE & ASSOCIATES INC.  
 Mullins Group, LLC  
 eua  
Planners • Developers • Engineers • Property Managers  
epstein uhen : architects

NOVEMBER 5, 2010

© Epstein Uhen Architects, Inc.



## LOWER LEVEL PLAN

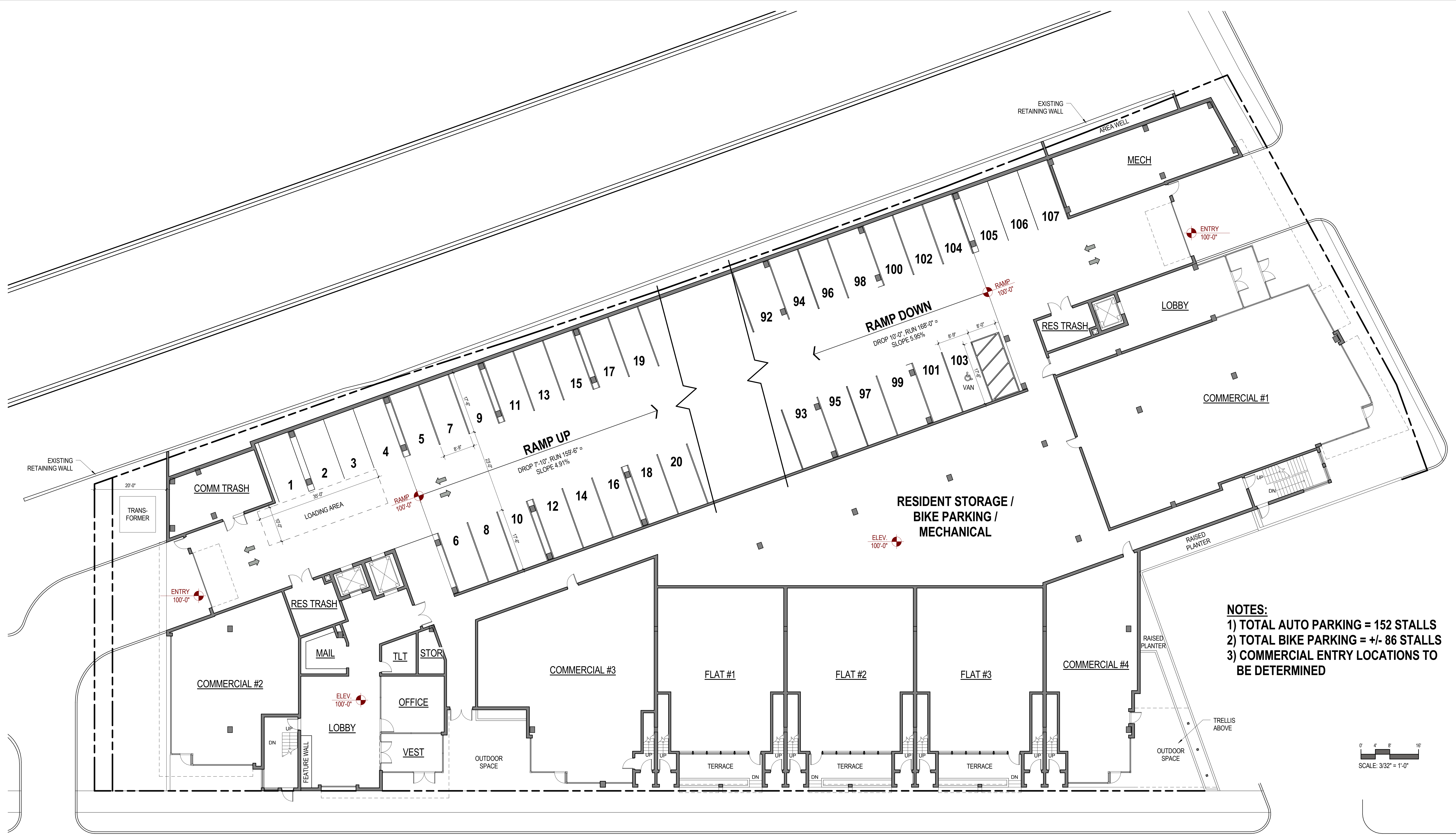
# 2550 UNIVERSITY AVENUE APARTMENTS


**VANDEWALLE & ASSOCIATES INC.**

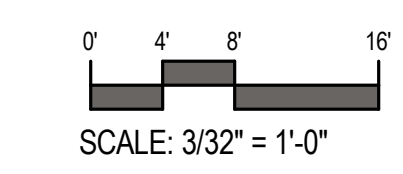

**Mullins Group, LLC**  
 Planners • Developers • Engineers • Property Managers


**eua**  
 eppstein uhen architects

NOVEMBER 8, 2010



- NOTES:**
- 1) TOTAL AUTO PARKING = 152 STALLS
  - 2) TOTAL BIKE PARKING = +/- 86 STALLS
  - 3) COMMERCIAL ENTRY LOCATIONS TO BE DETERMINED



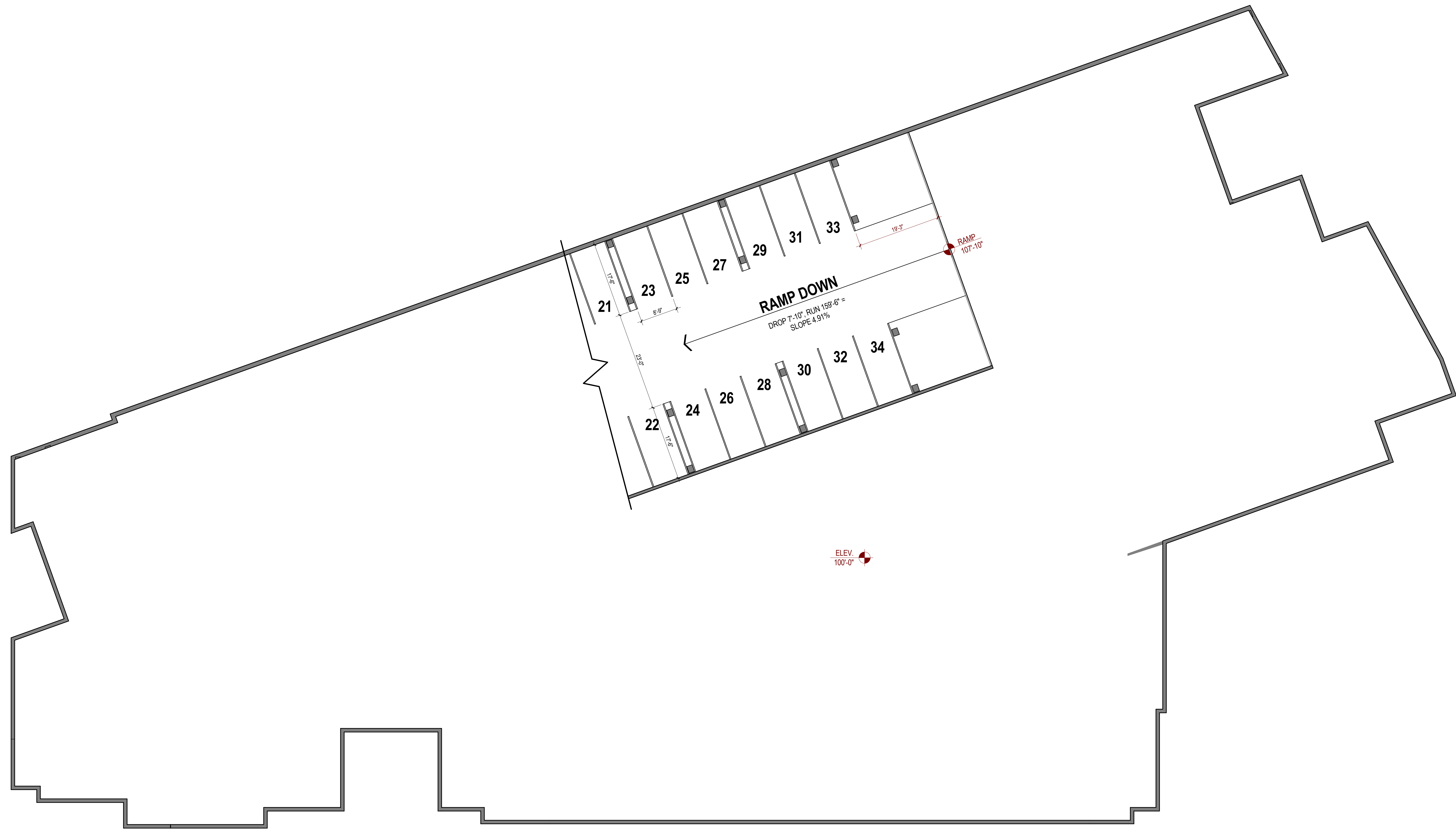
# FIRST FLOOR PLAN

## 2550 UNIVERSITY AVENUE APARTMENTS





NOVEMBER 8, 2010



0' 4' 8' 16'  
SCALE: 3/32" = 1'-0"

**FIRST FLOOR PLAN - UPPER PARKING LEVEL**

**2550 UNIVERSITY AVENUE APARTMENTS**

**VANDEWALLE & ASSOCIATES INC.**

**Mullins Group, LLC**  
Planners • Developers • Engineers • Property Managers

**eu:a**

eppstein uhen : architects

NOVEMBER 8, 2010

© Eppstein Uhen Architects, Inc.