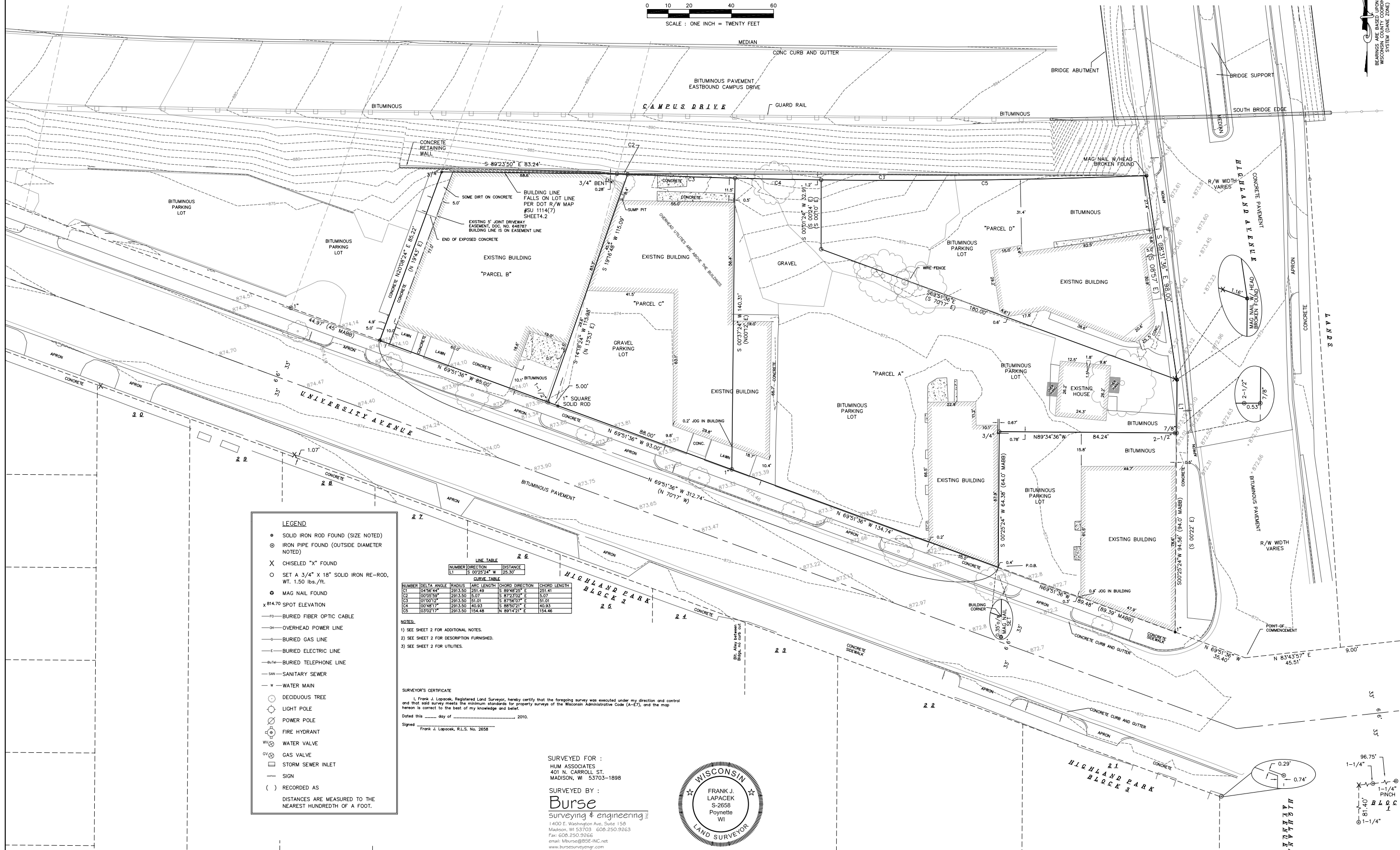
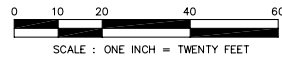


# PLAT OF SURVEY

PART OF THE NORTHWEST QUARTER (1/4) OF THE NORTHEAST QUARTER (1/4) OF SECTION 21,  
TOWNSHIP 07 NORTH, RANGE 09 EAST, CITY OF MADISON, DANE COUNTY, WISCONSIN



**LEGEND**

- SOLID IRON ROD FOUND (SIZE NOTED)
- ⊙ IRON PIPE FOUND (OUTSIDE DIAMETER NOTED)
- X CHISELED "X" FOUND
- SET A 3/4" X 18" SOLID IRON RE-ROD, WT. 1.50 lbs./ft.
- MAG NAIL FOUND
- x 0.14.70 SPOT ELEVATION
- BURIED FIBER OPTIC CABLE
- OVERHEAD POWER LINE
- BURIED GAS LINE
- BURIED ELECTRIC LINE
- BURIED TELEPHONE LINE
- SAN — SANITARY SEWER
- W — WATER MAIN
- DECIDUOUS TREE
- LIGHT POLE
- POWER POLE
- FIRE HYDRANT
- W WATER VALVE
- GAS VALVE
- STORM SEWER INLET
- SIGN
- ( ) RECORDED AS

DISTANCES ARE MEASURED TO THE NEAREST HUNDREDTH OF A FOOT.

LINE TABLE

NUMBER	DIRECTION	DISTANCE
C1	S 89°23'50" E	83.24'
C2	S 19°16'48" W	115.09'
C3	S 00°11'24" W	39.91'
C4	S 00°11'24" E	1.2'
C5	S 00°11'24" E	1.2'
C6	S 00°11'24" E	1.2'
C7	S 00°11'24" E	1.2'
C8	S 00°11'24" E	1.2'
C9	S 00°11'24" E	1.2'
C10	S 00°11'24" E	1.2'
C11	S 00°11'24" E	1.2'
C12	S 00°11'24" E	1.2'
C13	S 00°11'24" E	1.2'
C14	S 00°11'24" E	1.2'
C15	S 00°11'24" E	1.2'
C16	S 00°11'24" E	1.2'
C17	S 00°11'24" E	1.2'
C18	S 00°11'24" E	1.2'
C19	S 00°11'24" E	1.2'
C20	S 00°11'24" E	1.2'
C21	S 00°11'24" E	1.2'
C22	S 00°11'24" E	1.2'
C23	S 00°11'24" E	1.2'
C24	S 00°11'24" E	1.2'
C25	S 00°11'24" E	1.2'
C26	S 00°11'24" E	1.2'
C27	S 00°11'24" E	1.2'
C28	S 00°11'24" E	1.2'
C29	S 00°11'24" E	1.2'
C30	S 00°11'24" E	1.2'
C31	S 00°11'24" E	1.2'
C32	S 00°11'24" E	1.2'
C33	S 00°11'24" E	1.2'
C34	S 00°11'24" E	1.2'
C35	S 00°11'24" E	1.2'
C36	S 00°11'24" E	1.2'
C37	S 00°11'24" E	1.2'
C38	S 00°11'24" E	1.2'
C39	S 00°11'24" E	1.2'
C40	S 00°11'24" E	1.2'
C41	S 00°11'24" E	1.2'
C42	S 00°11'24" E	1.2'
C43	S 00°11'24" E	1.2'
C44	S 00°11'24" E	1.2'
C45	S 00°11'24" E	1.2'
C46	S 00°11'24" E	1.2'
C47	S 00°11'24" E	1.2'
C48	S 00°11'24" E	1.2'
C49	S 00°11'24" E	1.2'
C50	S 00°11'24" E	1.2'
C51	S 00°11'24" E	1.2'
C52	S 00°11'24" E	1.2'
C53	S 00°11'24" E	1.2'
C54	S 00°11'24" E	1.2'
C55	S 00°11'24" E	1.2'
C56	S 00°11'24" E	1.2'
C57	S 00°11'24" E	1.2'
C58	S 00°11'24" E	1.2'
C59	S 00°11'24" E	1.2'
C60	S 00°11'24" E	1.2'
C61	S 00°11'24" E	1.2'
C62	S 00°11'24" E	1.2'
C63	S 00°11'24" E	1.2'
C64	S 00°11'24" E	1.2'
C65	S 00°11'24" E	1.2'
C66	S 00°11'24" E	1.2'
C67	S 00°11'24" E	1.2'
C68	S 00°11'24" E	1.2'
C69	S 00°11'24" E	1.2'
C70	S 00°11'24" E	1.2'
C71	S 00°11'24" E	1.2'
C72	S 00°11'24" E	1.2'
C73	S 00°11'24" E	1.2'
C74	S 00°11'24" E	1.2'
C75	S 00°11'24" E	1.2'
C76	S 00°11'24" E	1.2'
C77	S 00°11'24" E	1.2'
C78	S 00°11'24" E	1.2'
C79	S 00°11'24" E	1.2'
C80	S 00°11'24" E	1.2'
C81	S 00°11'24" E	1.2'
C82	S 00°11'24" E	1.2'
C83	S 00°11'24" E	1.2'
C84	S 00°11'24" E	1.2'
C85	S 00°11'24" E	1.2'
C86	S 00°11'24" E	1.2'
C87	S 00°11'24" E	1.2'
C88	S 00°11'24" E	1.2'
C89	S 00°11'24" E	1.2'
C90	S 00°11'24" E	1.2'
C91	S 00°11'24" E	1.2'
C92	S 00°11'24" E	1.2'
C93	S 00°11'24" E	1.2'
C94	S 00°11'24" E	1.2'
C95	S 00°11'24" E	1.2'
C96	S 00°11'24" E	1.2'
C97	S 00°11'24" E	1.2'
C98	S 00°11'24" E	1.2'
C99	S 00°11'24" E	1.2'
C100	S 00°11'24" E	1.2'

NOTES:  
 1) SEE SHEET 2 FOR ADDITIONAL NOTES.  
 2) SEE SHEET 2 FOR DESCRIPTION FURNISHED.  
 3) SEE SHEET 2 FOR UTILITIES.

**SURVEYOR'S CERTIFICATE**  
 I, Frank J. Lapacek, Registered Land Surveyor, hereby certify that the foregoing survey was executed under my direction and control and that said survey meets the minimum standards for property surveys of the Wisconsin Administrative Code (A-E7), and the map hereon is correct to the best of my knowledge and belief.  
 Dated this \_\_\_\_ day of \_\_\_\_ 2010.  
 Signed Frank J. Lapacek, R.L.S. No. 2658

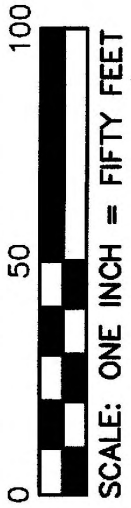
SURVEYED FOR :  
 HUM ASSOCIATES  
 401 N. CARROLL ST.  
 MADISON, WI 53703-1898

SURVEYED BY :  
**Burse**  
 surveying & engineering inc.  
 1400 E. Washington Ave., Suite 155  
 Madison, WI 53703 608.250.9263  
 Fax: 608.250.9266  
 email: mburse@bse-inc.net  
 www.burse-surveying.com

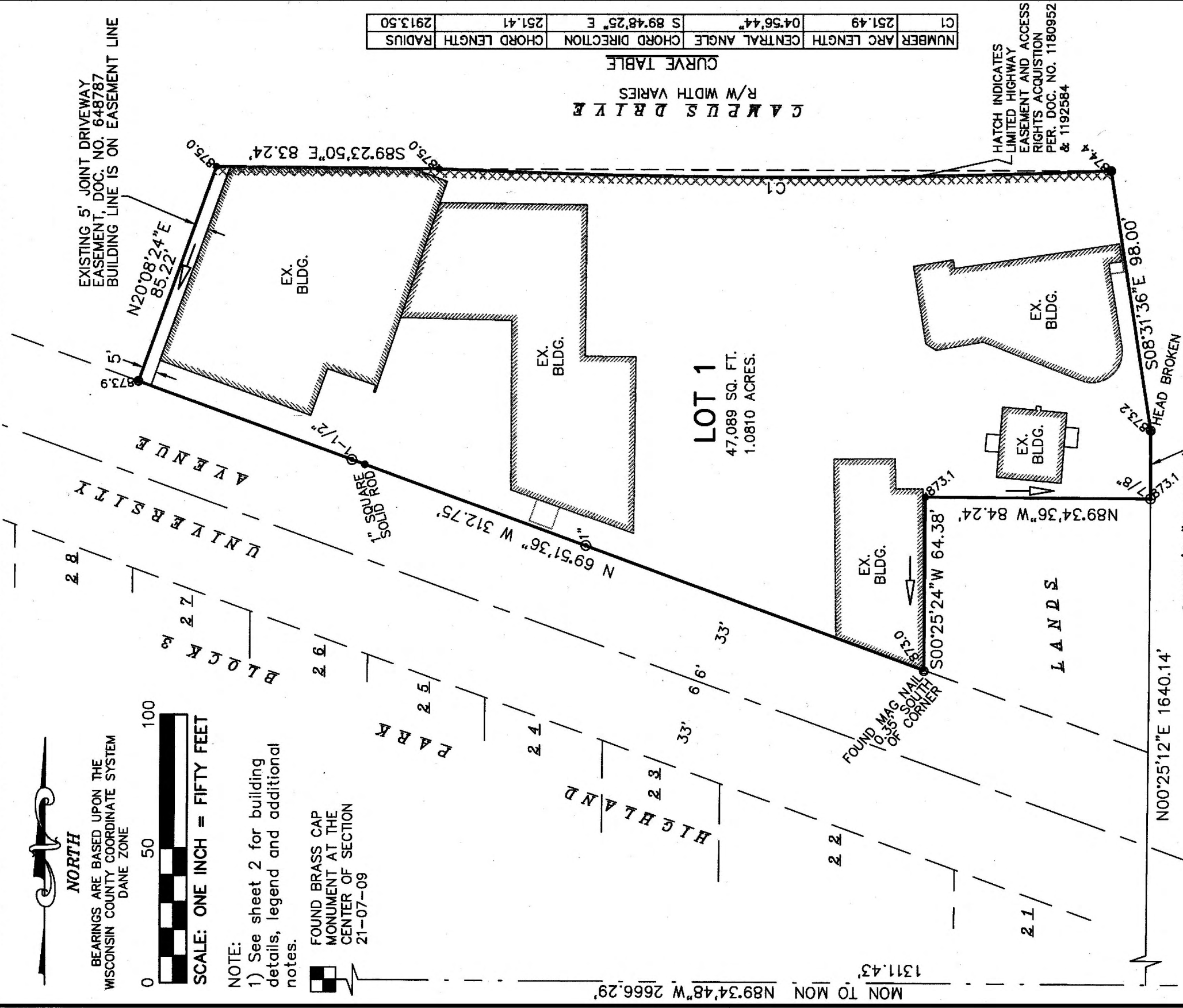


# CERTIFIED SURVEY MAP NO.

PART OF THE NORTHWEST QUARTER OF THE NORTHEAST QUARTER OF SECTION 21,  
TOWNSHIP 07 NORTH, RANGE 09 EAST, CITY OF MADISON, DANE COUNTY, WISCONSIN



NOTE:  
1) See sheet 2 for building details, legend and additional notes.



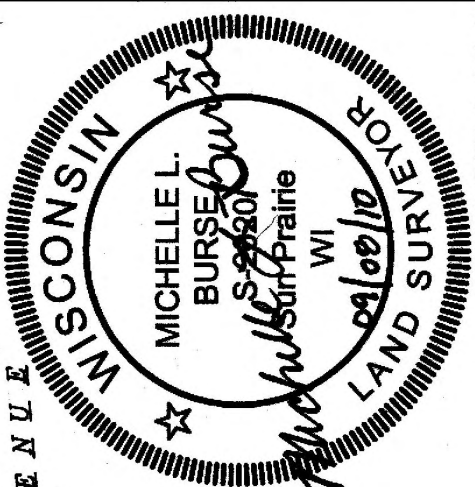
CURVE TABLE

NUMBER	ARC LENGTH	CENTRAL ANGLE	CHORD DIRECTION	CHORD LENGTH	RADIUS
C1	251.49	04°56'44"	S 89°48'25" E	251.41	2913.50

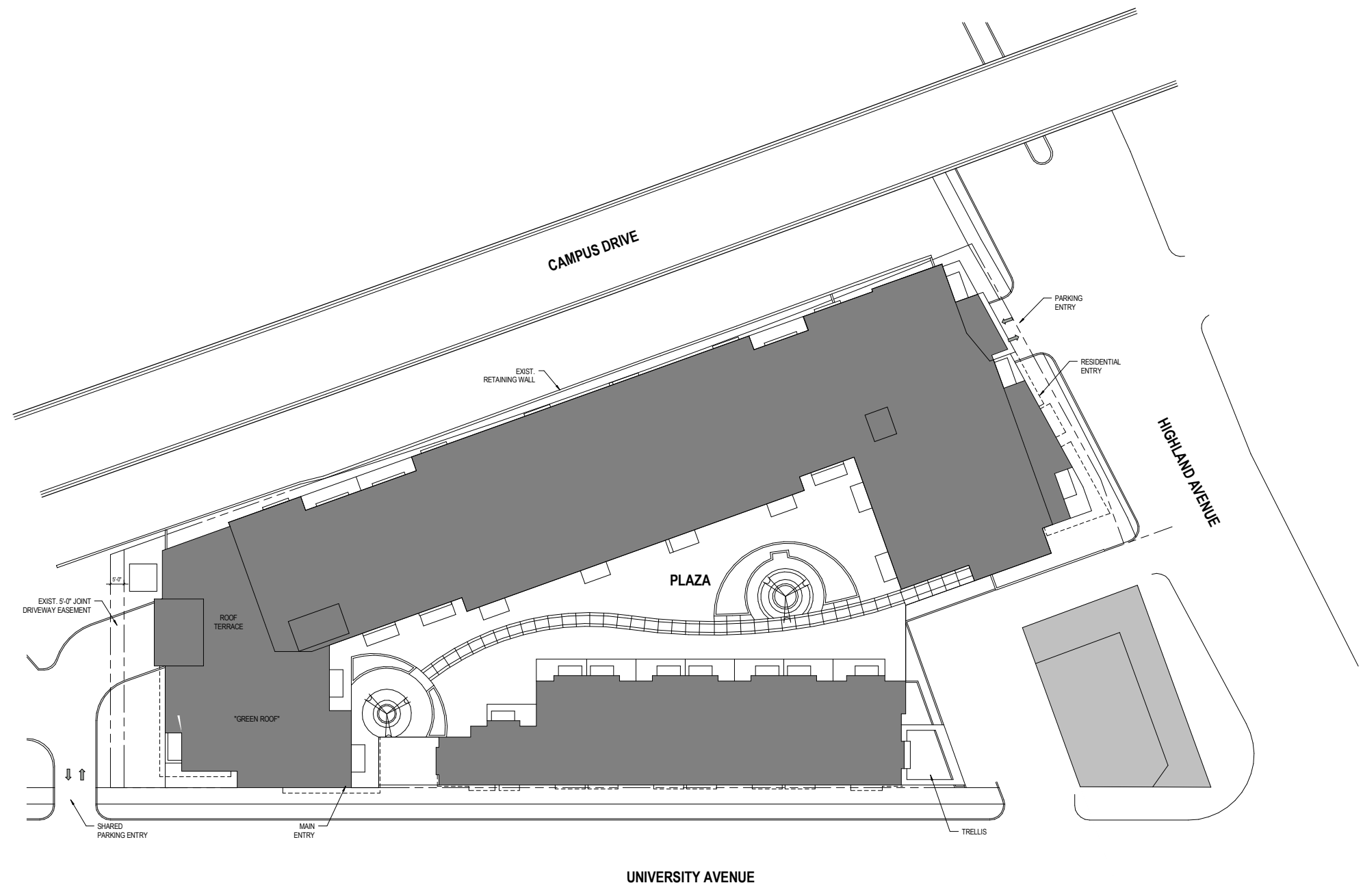
SURVEYED FOR :  
HUM Associates  
401 N. Carroll St.  
Madison, WI 53703

SURVEYED BY :  
**Burse**  
Surveying & engineering

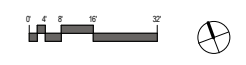
1-400 E. Washington Ave, Suite 158  
Madison, WI 53703 608.250.9263  
Fax: 608.250.9266  
email: Mburse@BSE-INC.net  
www.bursesurveyengr.com



MAP NO. \_\_\_\_\_  
DOCUMENT NO. \_\_\_\_\_  
VOLUME \_\_\_\_\_ PAGES \_\_\_\_\_  
Date: August 17, 2010  
Plot View: Sht1  
BSE427\CSM\CSBSE427.DWG



**SITE PLAN**







© Espalen Urban Architects, Inc.

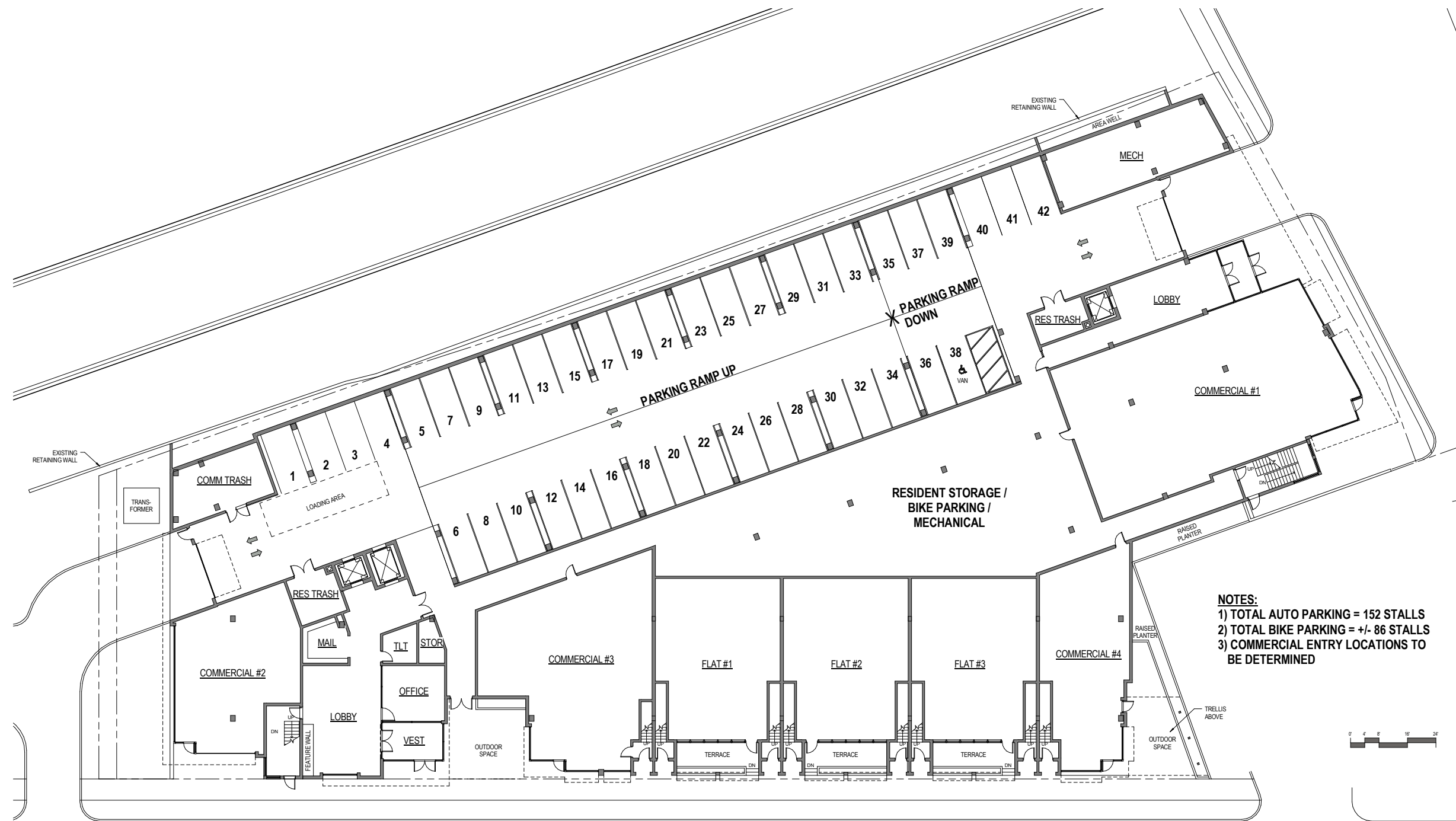


LOWER LEVEL PLAN

2550 UNIVERSITY AVENUE APARTMENTS



20 OCTOBER 2010



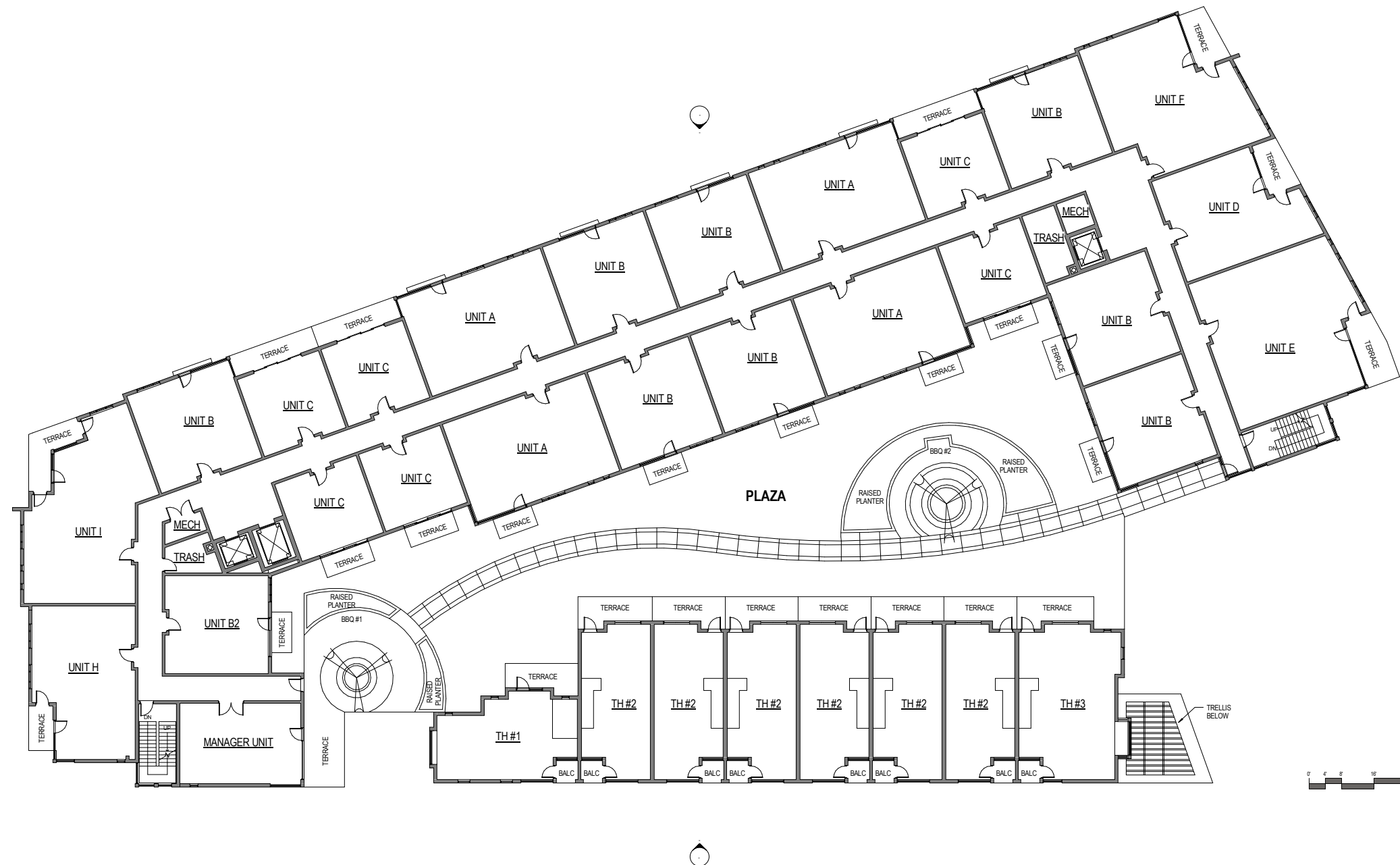
FIRST FLOOR PLAN

2550 UNIVERSITY AVENUE APARTMENTS



20 OCTOBER 2010

© Eganlin Urban Architects, Inc.



**SECOND FLOOR PLAN**

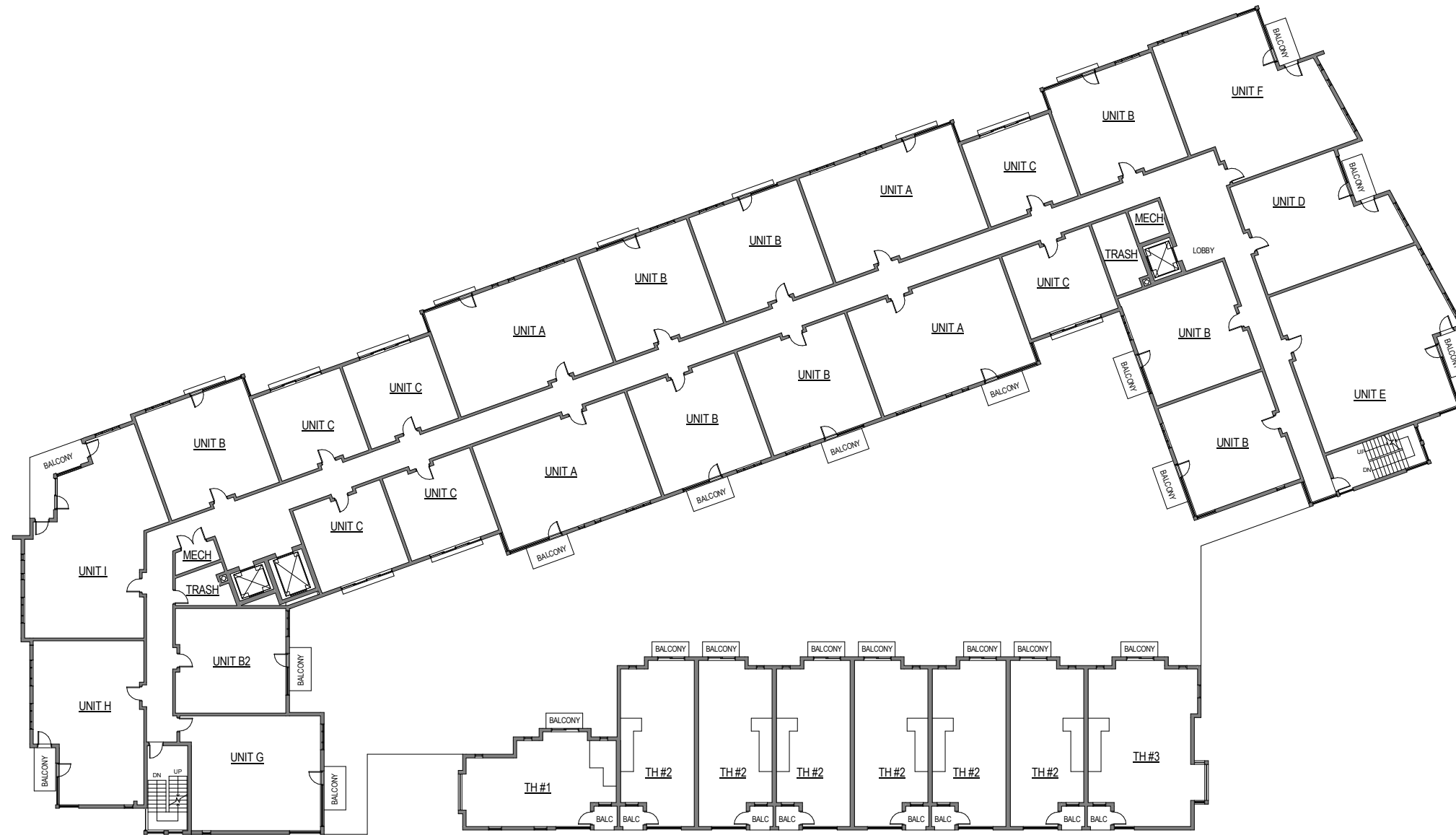
**2550 UNIVERSITY AVENUE APARTMENTS**



REGISTERED ARCHITECTS

20 OCTOBER 2010

© Espalen Uhan Architects, Inc.



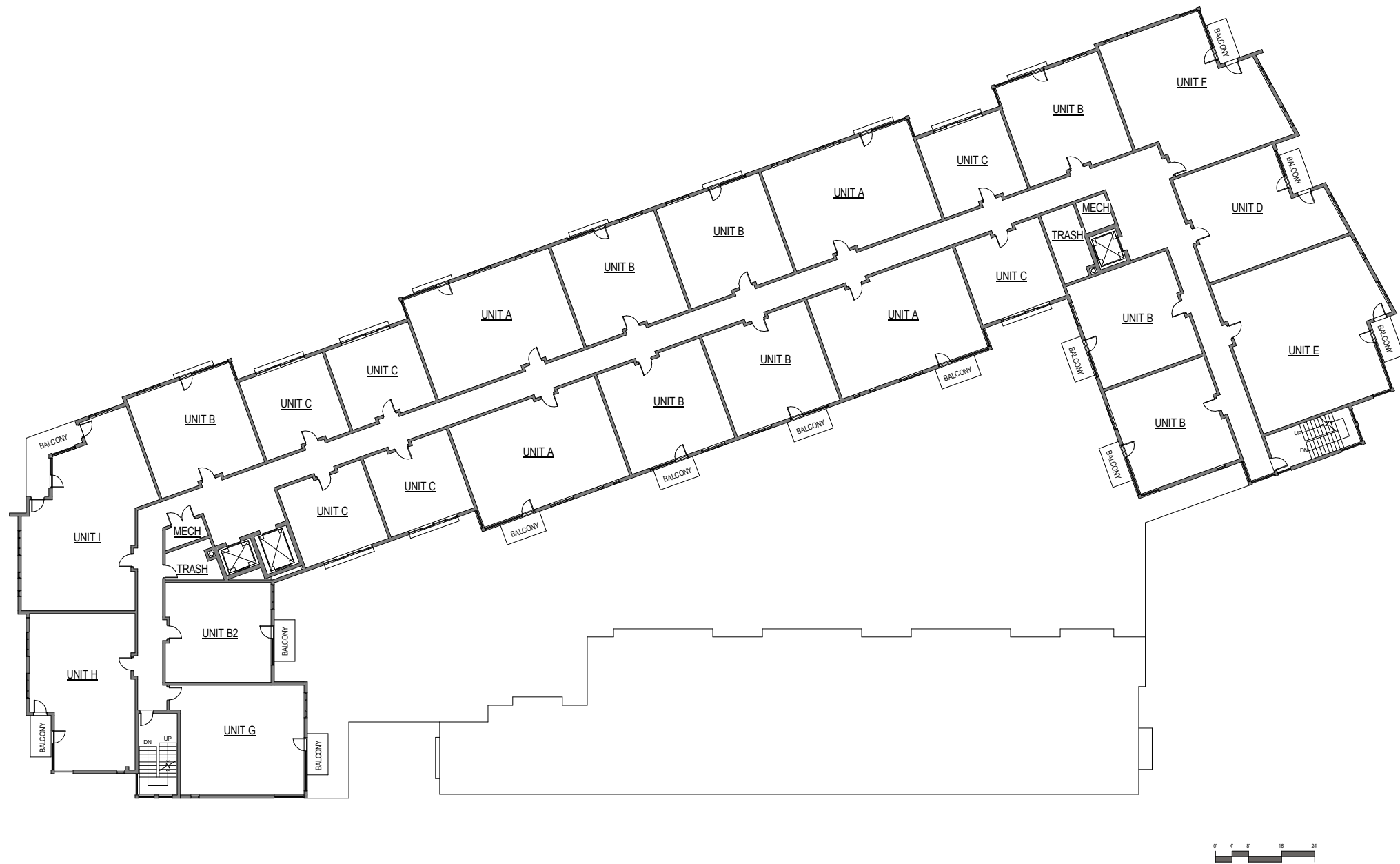
**THIRD FLOOR PLAN**

**2550 UNIVERSITY AVENUE APARTMENTS**



20 OCTOBER 2010

© Espalen Uhan Architects, Inc.



**FOURTH FLOOR PLAN**

**2550 UNIVERSITY AVENUE APARTMENTS**



20 OCTOBER 2010





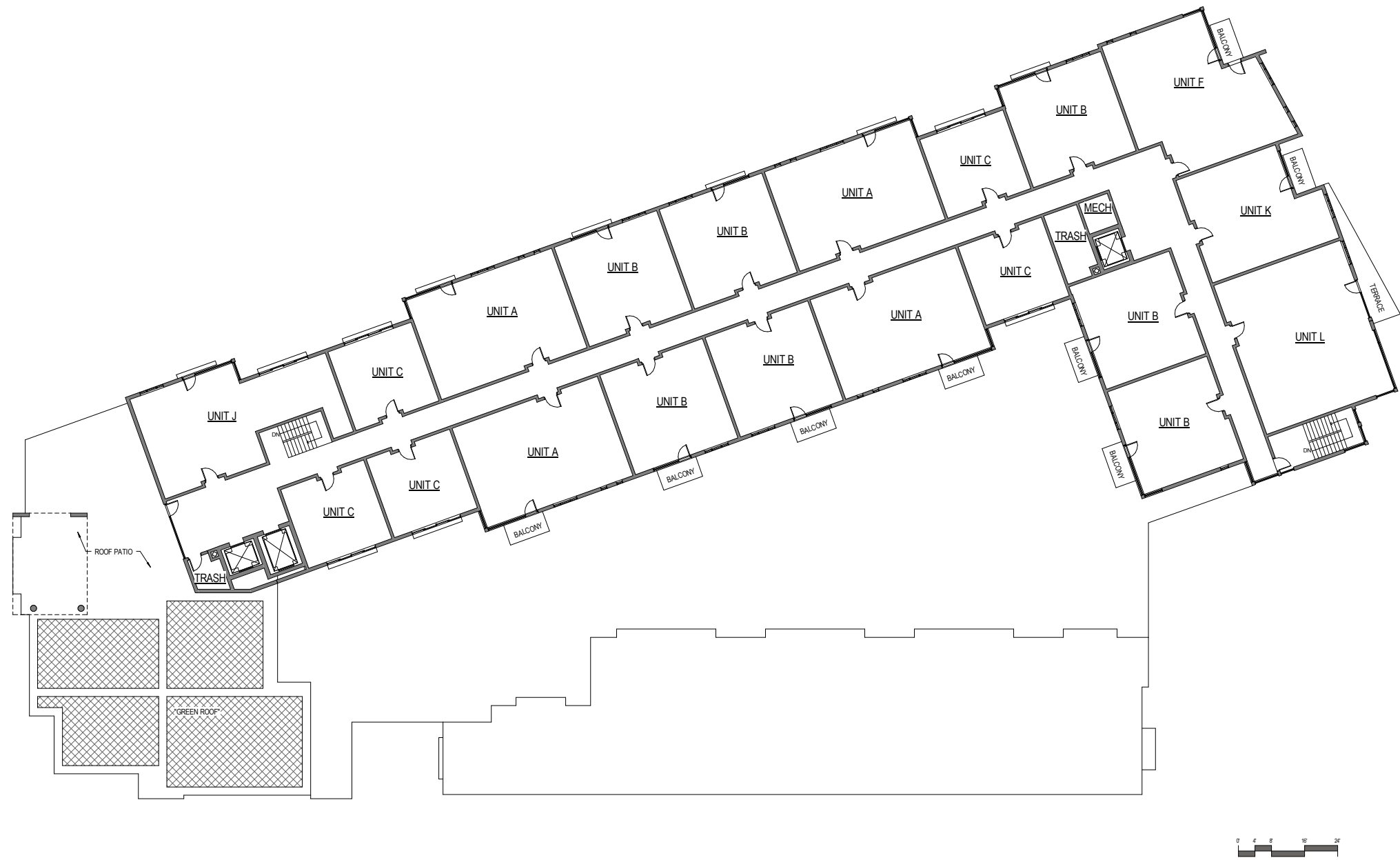
**FIFTH FLOOR PLAN**

**2550 UNIVERSITY AVENUE APARTMENTS**



20 OCTOBER 2010

© Epsilon Urban Architects, Inc.



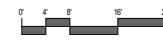
**SIXTH FLOOR PLAN**

**2550 UNIVERSITY AVENUE APARTMENTS**



20 OCTOBER 2010

© Espalen Uhen Architects, Inc.



# ROOF PLAN



© Espalin Urban Architects, Inc.