



haag miller, inc.
Architects • Engineers • Interiors

101 East Grand Avenue
Fort Washington
Wisconsin 53074-2216
Telephone: (262) 268-1200
Facsimile: (262) 268-1250
www.haagmiller.com

copyright 2011 © - haag miller.com

EXTERIOR ELEVATIONS
MC DONALD'S CORPORATION
2800 EAST WASHINGTON AVENUE
MADISON, WISCONSIN

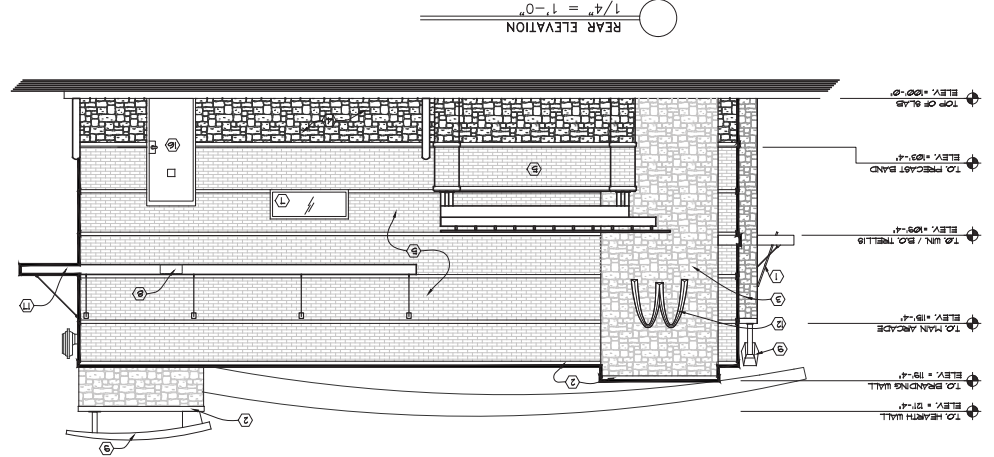
R E V I S I O N S		
NO.	DATE	DESCRIPTION
1	4/2/11	ISSUE FOR PERMIT
2	5/30/11	ISSUE FOR PERMIT

DATE: 5/10/2011
DRAWN BY: SFS
SHEET: 108197

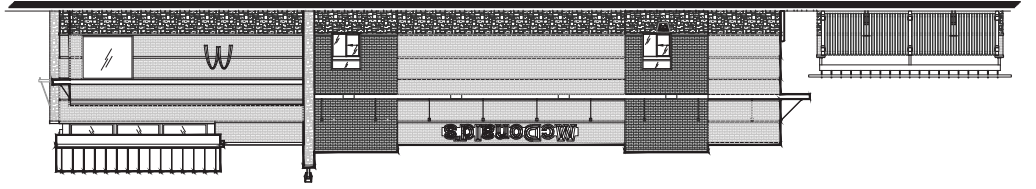
A-2.2

- ELEVATION KEYED NOTES:
THE FOLLOWING ELEVATION KEYED NOTES ARE ELABORATED WITH A KEY SYMBOL ON THE ELEVATION.
THREE NOTES APPLY TO ONE OR MORE ELEVATIONS.
- ① ILLUMINATED METAL SIGNAGE BY SIGN SUPPLIER. ALTERNATIVE SIGNAGE PERMITTED TO MATCH FACTORY SUPPLIED SIGNAGE THROUGH CONTRACT LIGHTING. INSTALLATION SHALL BE PERFORMED BY SIGN SUPPLIER.
 - ② SIGNAGE SHALL BE PERFORMED BY SIGN SUPPLIER. INSTALLATION SHALL BE PERFORMED BY SIGN SUPPLIER.
 - ③ SIGNAGE SHALL BE PERFORMED BY SIGN SUPPLIER. INSTALLATION SHALL BE PERFORMED BY SIGN SUPPLIER.
 - ④ SIGNAGE SHALL BE PERFORMED BY SIGN SUPPLIER. INSTALLATION SHALL BE PERFORMED BY SIGN SUPPLIER.
 - ⑤ SIGNAGE SHALL BE PERFORMED BY SIGN SUPPLIER. INSTALLATION SHALL BE PERFORMED BY SIGN SUPPLIER.
 - ⑥ SIGNAGE SHALL BE PERFORMED BY SIGN SUPPLIER. INSTALLATION SHALL BE PERFORMED BY SIGN SUPPLIER.
 - ⑦ SIGNAGE SHALL BE PERFORMED BY SIGN SUPPLIER. INSTALLATION SHALL BE PERFORMED BY SIGN SUPPLIER.
 - ⑧ SIGNAGE SHALL BE PERFORMED BY SIGN SUPPLIER. INSTALLATION SHALL BE PERFORMED BY SIGN SUPPLIER.
 - ⑨ SIGNAGE SHALL BE PERFORMED BY SIGN SUPPLIER. INSTALLATION SHALL BE PERFORMED BY SIGN SUPPLIER.
 - ⑩ SIGNAGE SHALL BE PERFORMED BY SIGN SUPPLIER. INSTALLATION SHALL BE PERFORMED BY SIGN SUPPLIER.
 - ⑪ SIGNAGE SHALL BE PERFORMED BY SIGN SUPPLIER. INSTALLATION SHALL BE PERFORMED BY SIGN SUPPLIER.
 - ⑫ SIGNAGE SHALL BE PERFORMED BY SIGN SUPPLIER. INSTALLATION SHALL BE PERFORMED BY SIGN SUPPLIER.
 - ⑬ SIGNAGE SHALL BE PERFORMED BY SIGN SUPPLIER. INSTALLATION SHALL BE PERFORMED BY SIGN SUPPLIER.
 - ⑭ SIGNAGE SHALL BE PERFORMED BY SIGN SUPPLIER. INSTALLATION SHALL BE PERFORMED BY SIGN SUPPLIER.
 - ⑮ SIGNAGE SHALL BE PERFORMED BY SIGN SUPPLIER. INSTALLATION SHALL BE PERFORMED BY SIGN SUPPLIER.
 - ⑯ SIGNAGE SHALL BE PERFORMED BY SIGN SUPPLIER. INSTALLATION SHALL BE PERFORMED BY SIGN SUPPLIER.
 - ⑰ SIGNAGE SHALL BE PERFORMED BY SIGN SUPPLIER. INSTALLATION SHALL BE PERFORMED BY SIGN SUPPLIER.
 - ⑱ SIGNAGE SHALL BE PERFORMED BY SIGN SUPPLIER. INSTALLATION SHALL BE PERFORMED BY SIGN SUPPLIER.
 - ⑲ SIGNAGE SHALL BE PERFORMED BY SIGN SUPPLIER. INSTALLATION SHALL BE PERFORMED BY SIGN SUPPLIER.
 - ⑳ SIGNAGE SHALL BE PERFORMED BY SIGN SUPPLIER. INSTALLATION SHALL BE PERFORMED BY SIGN SUPPLIER.
 - ㉑ SIGNAGE SHALL BE PERFORMED BY SIGN SUPPLIER. INSTALLATION SHALL BE PERFORMED BY SIGN SUPPLIER.
 - ㉒ SIGNAGE SHALL BE PERFORMED BY SIGN SUPPLIER. INSTALLATION SHALL BE PERFORMED BY SIGN SUPPLIER.
 - ㉓ SIGNAGE SHALL BE PERFORMED BY SIGN SUPPLIER. INSTALLATION SHALL BE PERFORMED BY SIGN SUPPLIER.
 - ㉔ SIGNAGE SHALL BE PERFORMED BY SIGN SUPPLIER. INSTALLATION SHALL BE PERFORMED BY SIGN SUPPLIER.
 - ㉕ SIGNAGE SHALL BE PERFORMED BY SIGN SUPPLIER. INSTALLATION SHALL BE PERFORMED BY SIGN SUPPLIER.
 - ㉖ SIGNAGE SHALL BE PERFORMED BY SIGN SUPPLIER. INSTALLATION SHALL BE PERFORMED BY SIGN SUPPLIER.
 - ㉗ SIGNAGE SHALL BE PERFORMED BY SIGN SUPPLIER. INSTALLATION SHALL BE PERFORMED BY SIGN SUPPLIER.
 - ㉘ SIGNAGE SHALL BE PERFORMED BY SIGN SUPPLIER. INSTALLATION SHALL BE PERFORMED BY SIGN SUPPLIER.
 - ㉙ SIGNAGE SHALL BE PERFORMED BY SIGN SUPPLIER. INSTALLATION SHALL BE PERFORMED BY SIGN SUPPLIER.
 - ㉚ SIGNAGE SHALL BE PERFORMED BY SIGN SUPPLIER. INSTALLATION SHALL BE PERFORMED BY SIGN SUPPLIER.
 - ㉛ SIGNAGE SHALL BE PERFORMED BY SIGN SUPPLIER. INSTALLATION SHALL BE PERFORMED BY SIGN SUPPLIER.
 - ㉜ SIGNAGE SHALL BE PERFORMED BY SIGN SUPPLIER. INSTALLATION SHALL BE PERFORMED BY SIGN SUPPLIER.
 - ㉝ SIGNAGE SHALL BE PERFORMED BY SIGN SUPPLIER. INSTALLATION SHALL BE PERFORMED BY SIGN SUPPLIER.
 - ㉞ SIGNAGE SHALL BE PERFORMED BY SIGN SUPPLIER. INSTALLATION SHALL BE PERFORMED BY SIGN SUPPLIER.
 - ㉟ SIGNAGE SHALL BE PERFORMED BY SIGN SUPPLIER. INSTALLATION SHALL BE PERFORMED BY SIGN SUPPLIER.
 - ㊱ SIGNAGE SHALL BE PERFORMED BY SIGN SUPPLIER. INSTALLATION SHALL BE PERFORMED BY SIGN SUPPLIER.
 - ㊲ SIGNAGE SHALL BE PERFORMED BY SIGN SUPPLIER. INSTALLATION SHALL BE PERFORMED BY SIGN SUPPLIER.
 - ㊳ SIGNAGE SHALL BE PERFORMED BY SIGN SUPPLIER. INSTALLATION SHALL BE PERFORMED BY SIGN SUPPLIER.
 - ㊴ SIGNAGE SHALL BE PERFORMED BY SIGN SUPPLIER. INSTALLATION SHALL BE PERFORMED BY SIGN SUPPLIER.
 - ㊵ SIGNAGE SHALL BE PERFORMED BY SIGN SUPPLIER. INSTALLATION SHALL BE PERFORMED BY SIGN SUPPLIER.
 - ㊶ SIGNAGE SHALL BE PERFORMED BY SIGN SUPPLIER. INSTALLATION SHALL BE PERFORMED BY SIGN SUPPLIER.
 - ㊷ SIGNAGE SHALL BE PERFORMED BY SIGN SUPPLIER. INSTALLATION SHALL BE PERFORMED BY SIGN SUPPLIER.
 - ㊸ SIGNAGE SHALL BE PERFORMED BY SIGN SUPPLIER. INSTALLATION SHALL BE PERFORMED BY SIGN SUPPLIER.
 - ㊹ SIGNAGE SHALL BE PERFORMED BY SIGN SUPPLIER. INSTALLATION SHALL BE PERFORMED BY SIGN SUPPLIER.
 - ㊺ SIGNAGE SHALL BE PERFORMED BY SIGN SUPPLIER. INSTALLATION SHALL BE PERFORMED BY SIGN SUPPLIER.
 - ㊻ SIGNAGE SHALL BE PERFORMED BY SIGN SUPPLIER. INSTALLATION SHALL BE PERFORMED BY SIGN SUPPLIER.
 - ㊼ SIGNAGE SHALL BE PERFORMED BY SIGN SUPPLIER. INSTALLATION SHALL BE PERFORMED BY SIGN SUPPLIER.
 - ㊽ SIGNAGE SHALL BE PERFORMED BY SIGN SUPPLIER. INSTALLATION SHALL BE PERFORMED BY SIGN SUPPLIER.
 - ㊾ SIGNAGE SHALL BE PERFORMED BY SIGN SUPPLIER. INSTALLATION SHALL BE PERFORMED BY SIGN SUPPLIER.
 - ㊿ SIGNAGE SHALL BE PERFORMED BY SIGN SUPPLIER. INSTALLATION SHALL BE PERFORMED BY SIGN SUPPLIER.

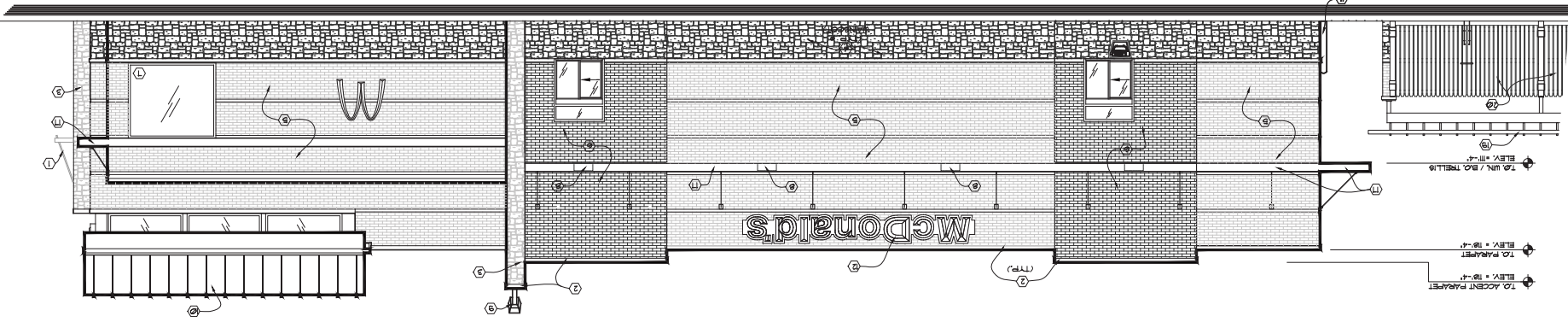
NOTE: EXPANSION JOINTS SHALL BE PLACED AT THE FOLLOWING LOCATIONS:
MANUFACTURING STANDARDS. AS A MINIMUM, EXPANSION JOINTS SHALL BE PLACED AT THE FOLLOWING LOCATIONS:
1) WHERE BUILDING EXPANSION JOINTS OCCUR.
2) AT FLOOR LINES IN WOOD FRAME CONSTRUCTION.
3) AT FLOOR LINES IN NON-WOOD FRAME BUILDINGS WHERE SIGNIFICANT MOVEMENT IS EXPECTED.
4) WHERE EXPANSION JOINTS OCCUR IN THE SUBSTRATE SYSTEM.
5) WHERE THE SUBSTRATE PLUS SYSTEM JOINTS DISSEMBLE MATERIALS.
6) WHERE PERFORATED PANELS JOIN ONE ANOTHER.
7) WHERE PERFORATED PANELS JOIN AT JOINTS NOT EXCEEDING 10 FEET.
8) IN A CONTIGUOUS ELEVATION AT JOINTS NOT EXCEEDING 10 FEET.
9) WHERE SIGNIFICANT STRUCTURAL MOVEMENT OCCURS, SUCH AS CHANGES IN ROOFLINE BUILDING SHAPE OR STRUCTURAL SYSTEM.



REAR ELEVATION
1/4" = 1'-0"



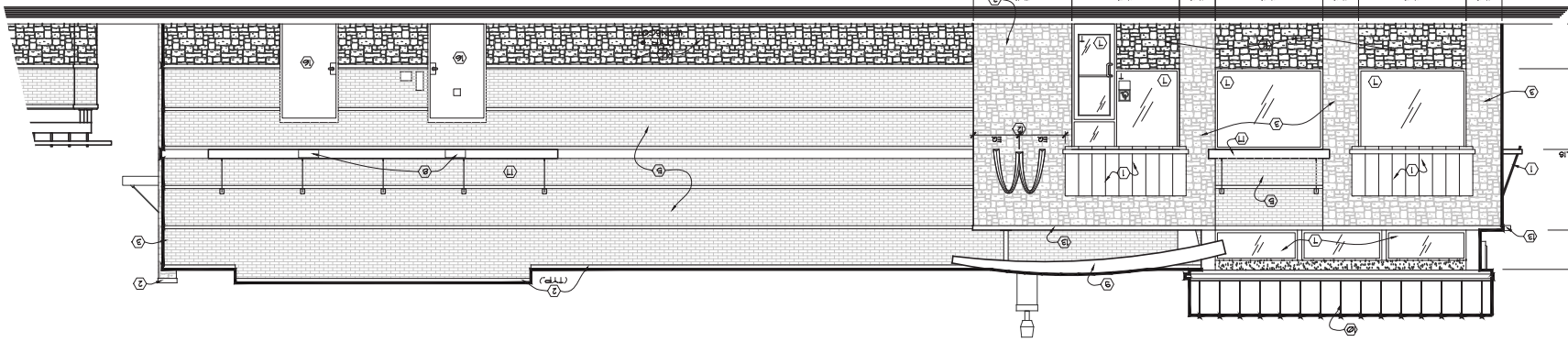
DRIVE-THRU SIDE ELEVATION
1/8" = 1'-0"



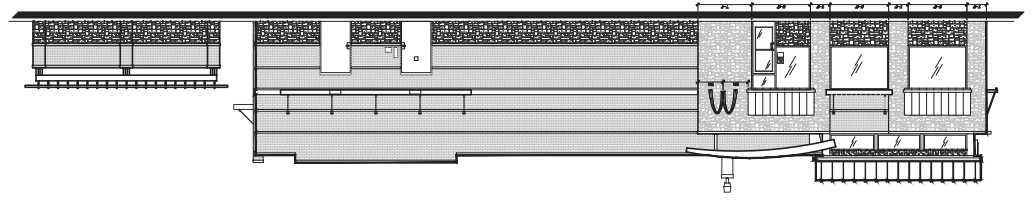
DRIVE-THRU SIDE ELEVATION
1/4" = 1'-0"

ELEV. +10'-0"
TOP OF SLAB
ELEV. +10'-4"
B.O. WINDOW
ELEV. +10'-4"
TO UN. / B.O. TELLER
ELEV. +10'-4"
TO MAIN ARCADE
ELEV. +10'-4"
TO PARADE
ELEV. +10'-4"

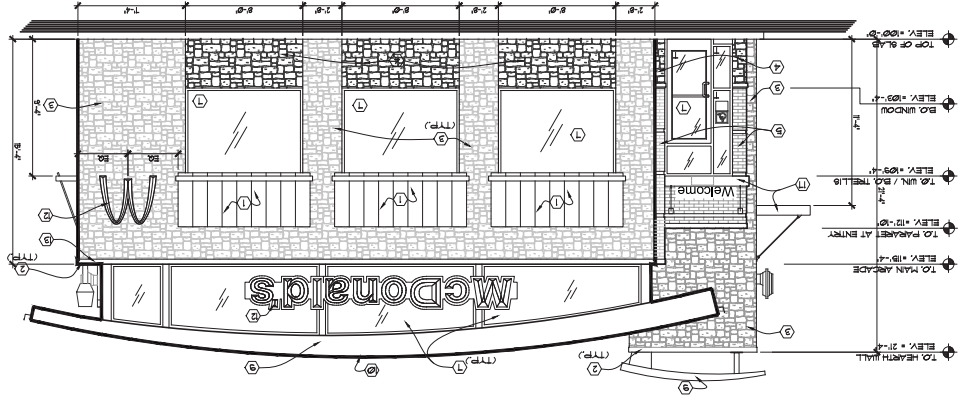
1/4" = 1'-0"
PARTIAL NON DRIVE-THRU SIDE ELEVATION



1/8" = 1'-0"
NON DRIVE-THRU SIDE ELEVATION



1/4" = 1'-0"
FRONT ELEVATION



NOTE:
EISA EXPANSION JOINTS PER PER. THE FOLLOWING REQUIREMENTS ARE BASED ON DRYVIT MANUFACTURING STANDARDS. AS A MINIMUM EXPANSION JOINTS SHALL BE PLACED AT THE FOLLOWING LOCATIONS:
1) WHERE EXPANSION JOINTS OCCUR IN THE SUBSTRATE SYSTEM.
2) WHERE BUILDING EXPANSION JOINTS OCCUR.
3) AT FLOOR LINES IN WOOD FRAME CONSTRUCTION.
4) AT FLOOR LINES OF NON-WOOD FRAMED BUILDINGS WHERE SIGNIFICANT MOVEMENT IS EXPECTED.
5) WHERE THE SUBSTRATE TYPE CHANGES.
6) WHERE THE SUBSTRATE TYPE CHANGES.
7) WHERE REINFORCED CONCRETE PARTS MEET OR ANOTHER.
8) IN A CONTIGUOUS ELEVATION AT INTERVALS NOT EXCEEDING 15 FEET.
9) WHERE SIGNIFICANT STRUCTURAL MOVEMENT OCCURS, SUCH AS CHANGES IN ROOFLINE, BUILDING SHAPE OR STRUCTURAL SYSTEM.

- ELEVATION KEPT NOTED.
THE FOLLOWING ELEVATION KEPT NOTED ARE ENCLOSED WITH A) SYMBOL ON THE ELEVATIONS.
THESE NOTES APPLY TO ONE OR MORE ELEVATIONS.
1) LETTERING SHALL BE BY XEN LETTERING ALTERNATE PERMIT COLOR TO BE AVAILABLE THROUGH SECURITY LIGHTING AND BELL.
2) ALUMINUM CORNER NATURAL ANODIZED ALUMINUM.
3) CULTURED STONE ARCADE STONE SHALL BE CROWN CORNER CORRELATED PATTERNS COLOR.
4) CULTURED STONE ARCADE STONE SHALL BE MATCH FIELD BRICK.
5) HOLLOW METAL DOOR & FRAME COLOR MATCH FIELD BRICK.
6) ALUMINUM TELLERS W/ TELLERS.
7) CEDAR PERGOLA PAINTED TO MATCH ACCENT BRICK COLOR.
8) CEDAR SILLERS PAINTED TO MATCH COLOR OF ACCENT BRICK.
9) CLEAR INSULATED LOW-E GLASS SET IN INDICATED TYPED GLASS SET IN TYPED ALUM. FRAMES. 7" SECTIONS FOR SHUT AND SEAL.
10) RADIANT WALL COGNICE DOWNLIGHT ONLY. NATURAL ANODIZED ALUM. FRAMES. 7" PLAN SHEET A-12 FOR MORE INFORMATION.
11) R. ROOF CAP ELEVATION BY OTHERS. COLOR TO MATCH MAINS.
12) YELLOW STAINLESS STEEL METAL ROOF.
13) PIPE DOLLARS - PAINTED YELLOW.
14) THE FOLLOWING ELEVATION KEPT NOTED ARE ENCLOSED WITH A) SYMBOL ON THE ELEVATIONS.
15) THESE NOTES APPLY TO ONE OR MORE ELEVATIONS.
16) REPAIRS MADE BY OTHERS - UNDER SEPARATE PERMIT.
17) HOLLOW METAL LED FACADE LIGHTING AVAILABLE THROUGH SECURITY LIGHTING AND BELL.
18) ALUMINUM CORNER NATURAL ANODIZED ALUMINUM.
19) CULTURED STONE ARCADE STONE SHALL BE CROWN CORNER CORRELATED PATTERNS COLOR.
20) CULTURED STONE ARCADE STONE SHALL BE MATCH FIELD BRICK.
21) HOLLOW METAL DOOR & FRAME COLOR MATCH FIELD BRICK.
22) ALUMINUM TELLERS W/ TELLERS.
23) CEDAR PERGOLA PAINTED TO MATCH ACCENT BRICK COLOR.
24) CEDAR SILLERS PAINTED TO MATCH COLOR OF ACCENT BRICK.

REVISIONS

NO.	DATE	DESCRIPTION
1	4/21/11	ISSUING
2	5/20/11	FOR SUBMITTAL

DATE: 5/10/2011
PROJECT NO.: 1008197
DRAWN BY: SFS
SHEET: A-2.1

EXTERIOR ELEVATIONS
MC DONALD'S CORPORATION
2800 EAST WASHINGTON AVENUE
MADISON, WISCONSIN

101 East Grand Avenue
Port Washington
Wisconsin 53074-2216
Telephone: (262) 268-1200
Facsimile: (262) 268-1250
www.haagmuller.com
copyright © - haagmuller









