

# MORTENSON INVESTMENT GROUP WEST BELTLINE DESIGN CENTER 2711 WEST BELTLINE HIGHWAY & 2810 TODD DRIVE MADISON, WISCONSIN



PROJECT LOCATION

**LOCATION MAP**  
NO SCALE



### SHEET INDEX

SHEET NO.	DESCRIPTION
CD001	TITLE SHEET / LOCATION MAP
C101	EXISTING SITE CONDITIONS
C102	DEMOLITION PLAN
C103	SITE PLAN
C104	GRADING PLAN
C105	UTILITY PLAN
C106	EROSION CONTROL PLAN
C107	FIRE PROTECTION PLAN
C501	DETAILS SHEET
C502	DETAILS SHEET
E101	SITE LIGHTING PLAN
A101	EXTERIOR ELEVATIONS
L101	LANDSCAPING PLAN

REVISIONS	REVISIONS
NO.	NO.
DATE	DATE
REMARKS	REMARKS

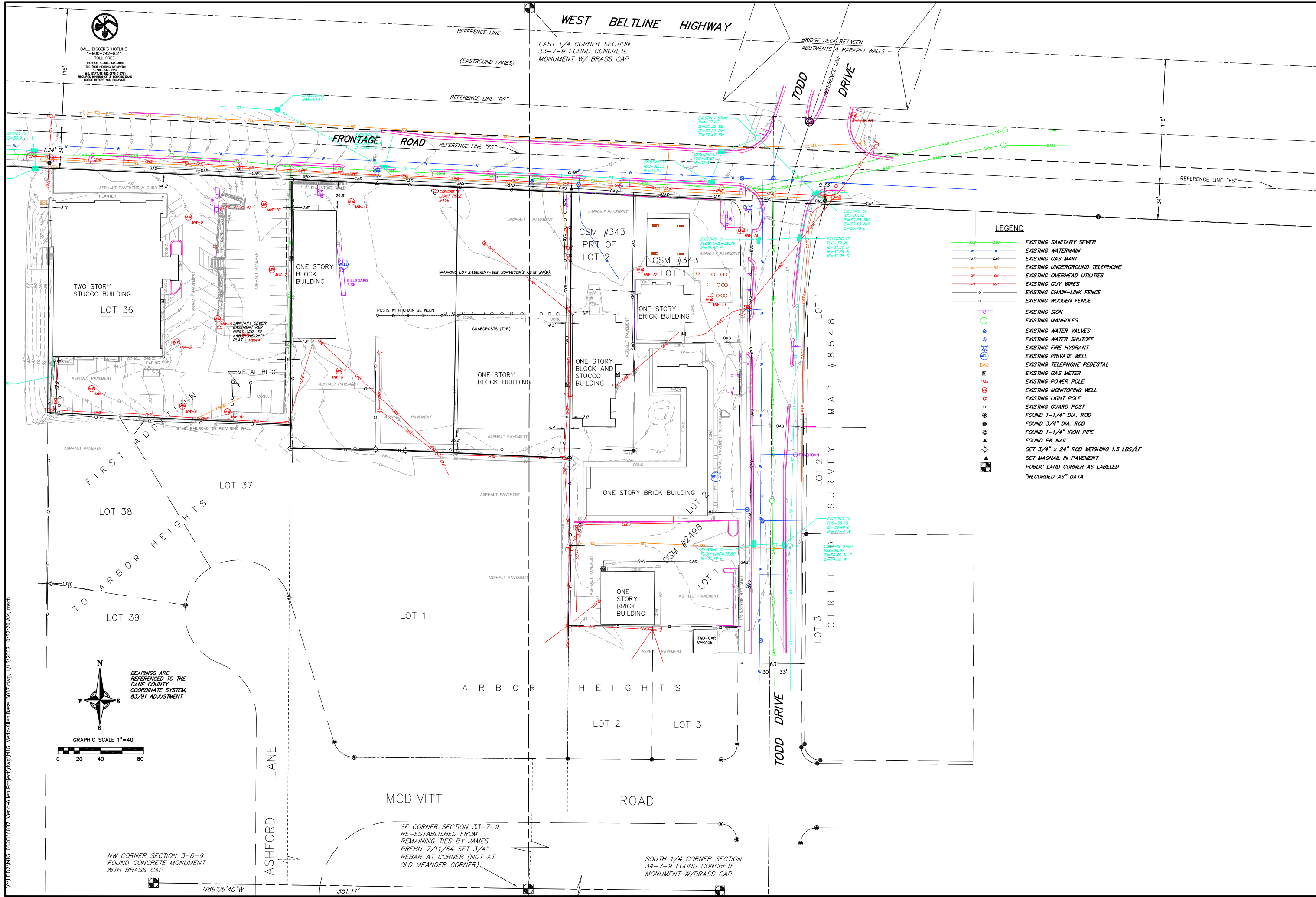
<b>SCALE</b>	AS SHOWN
<b>DATE</b>	Jan. 16, 2007
<b>DRAFTER</b>	MWS
<b>CHECKED</b>	ABI
<b>PROJECT NO.</b>	032066037
<b>SHEET</b>	CD001
<b>DWG. NO.</b>	No.



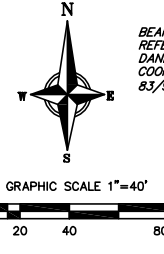
CALL DIGGER'S HOTLINE  
 1-800-242-8511  
 TOLL FREE  
 TELEFAX: 1-800-338-3860  
 TDC (FOR HEARING IMPAIRED):  
 1-800-542-2289  
 WS. STATUTE 182.0175 (1979)  
 REQUIRES MINIMUM OF 3 WORKING DAYS  
 NOTICE BEFORE YOU EXCAVATE.

V:\DD2\WIC\_032066037\_Vierbich-Allen Project\dwg\WIC\_Vierbich-Allen Title Sheet\_0007.dwg, 1/16/2007 10:53:11 AM, mscd





CALL DIGGER'S HOTLINE  
1-800-242-8511  
TOLL FREE  
TELEFAX 1-800-242-8511  
TDC (FOR HEARING IMPAIRED)  
1-800-242-8511  
WE STRIKE 18:07:18 (1978)  
REQUIRES A MINIMUM OF 3 WORKING DAYS  
NOTICE BEFORE YOU EXCAVATE.



- LEGEND**
- SAN — EXISTING SANITARY SEWER
  - W — EXISTING WATERMAIN
  - GAS — EXISTING GAS MAIN
  - TEL — EXISTING UNDERGROUND TELEPHONE
  - OH — EXISTING OVERHEAD UTILITIES
  - GUY — EXISTING GUY WIRES
  - CHAIN — EXISTING CHAIN-LINK FENCE
  - WOODEN — EXISTING WOODEN FENCE
  - EXISTING SIGN
  - EXISTING MANHOLES
  - EXISTING WATER VALVES
  - EXISTING WATER SHUTOFF
  - EXISTING FIRE HYDRANT
  - EXISTING PRIVATE WELL
  - EXISTING TELEPHONE PEDESTAL
  - EXISTING GAS METER
  - EXISTING POWER POLE
  - EXISTING MONITORING WELL
  - EXISTING LIGHT POLE
  - EXISTING GUARD POST
  - FOUND 1-1/4" DIA. ROD
  - FOUND 3/4" DIA. ROD
  - FOUND 1-1/4" IRON PIPE
  - FOUND PK NAIL
  - SET 3/4" x 24" ROD WEIGHING 1.5 LBS/LF
  - SET MAGNAIL IN PAVEMENT
  - PUBLIC LAND CORNER AS LABELED
  - \*RECORDED AS" DATA

**VERBICHER ASSOCIATES**  
Committed to Quality Service Since 1976  
REEDSBURG - MADISON - PRAIRIE DU CHIEN 3717  
999 First Street  
Phone: (608) 826-0532 Fax: (608) 826-0530

**Existing Conditions Plan**  
Mortenson Investment Group  
2711 West Beltline Highway & 2810 TODD DRIVE  
Madison, Wisconsin

REVISIONS	NO.	DATE	REMARKS

SCALE 1"=40'

DATE January 16, 2007

DRAFTER MWS

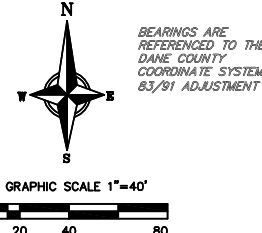
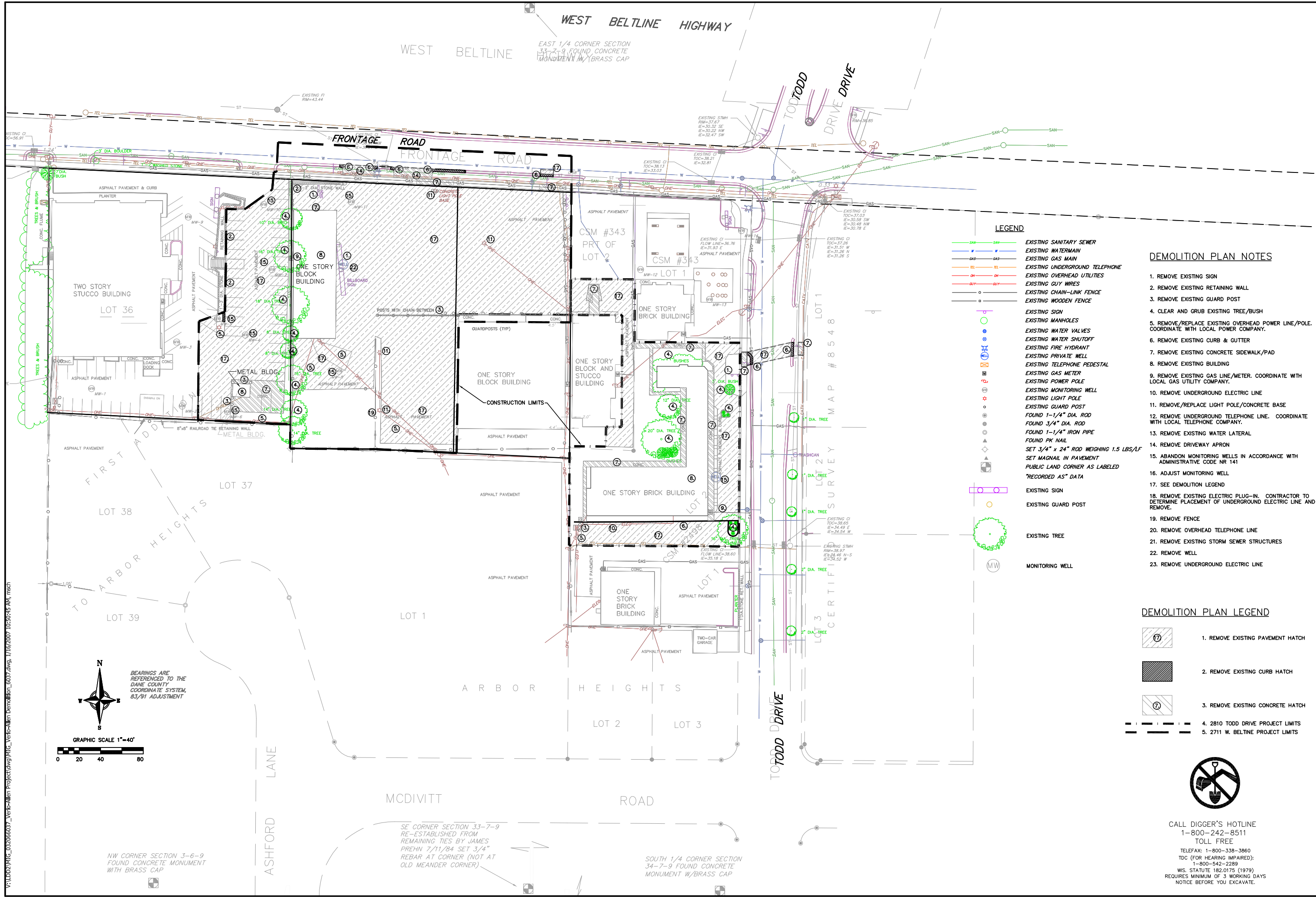
CHECKED

PROJECT NO. 032066037

SHEET C101

DWG. NO. No.





BEARINGS ARE REFERENCED TO THE DANE COUNTY COORDINATE SYSTEM, 83/91 ADJUSTMENT

NW CORNER SECTION 3-6-9 FOUND CONCRETE MONUMENT WITH BRASS CAP

SE CORNER SECTION 33-7-9 RE-ESTABLISHED FROM REMAINING TIES BY JAMES PREHN 7/11/84 SET 3/4" REBAR AT CORNER (NOT AT OLD MEANDER CORNER)

SOUTH 1/4 CORNER SECTION 34-7-9 FOUND CONCRETE MONUMENT W/BRASS CAP

- LEGEND**
- EXISTING SANITARY SEWER
  - EXISTING WATERMAIN
  - EXISTING GAS MAIN
  - EXISTING UNDERGROUND TELEPHONE
  - EXISTING OVERHEAD UTILITIES
  - EXISTING GUY WIRES
  - EXISTING CHAIN-LINK FENCE
  - EXISTING WOODEN FENCE
  - EXISTING SIGN
  - EXISTING MANHOLES
  - EXISTING WATER VALVES
  - EXISTING WATER SHUTOFF
  - EXISTING FIRE HYDRANT
  - EXISTING PRIVATE WELL
  - EXISTING TELEPHONE PEDESTAL
  - EXISTING GAS METER
  - EXISTING POWER POLE
  - EXISTING MONITORING WELL
  - EXISTING LIGHT POLE
  - EXISTING GUARD POST
  - FOUND 1-1/4" DIA. ROD
  - FOUND 3/4" DIA. ROD
  - FOUND 1-1/4" IRON PIPE
  - FOUND PK NAIL
  - SET 3/4" x 24" ROD WEIGHING 1.5 LBS/LF
  - SET MAGNAIL IN PAVEMENT
  - PUBLIC LAND CORNER AS LABELED
  - "RECORDED AS" DATA
  - EXISTING SIGN
  - EXISTING GUARD POST
  - EXISTING TREE
  - MONITORING WELL

- DEMOLITION PLAN NOTES**
1. REMOVE EXISTING SIGN
  2. REMOVE EXISTING RETAINING WALL
  3. REMOVE EXISTING GUARD POST
  4. CLEAR AND GRUB EXISTING TREE/BUSH
  5. REMOVE/REPLACE EXISTING OVERHEAD POWER LINE/POLE. COORDINATE WITH LOCAL POWER COMPANY.
  6. REMOVE EXISTING CURB & GUTTER
  7. REMOVE EXISTING CONCRETE SIDEWALK/PAD
  8. REMOVE EXISTING BUILDING
  9. REMOVE EXISTING GAS LINE/METER. COORDINATE WITH LOCAL GAS UTILITY COMPANY.
  10. REMOVE UNDERGROUND ELECTRIC LINE
  11. REMOVE/REPLACE LIGHT POLE/CONCRETE BASE
  12. REMOVE UNDERGROUND TELEPHONE LINE. COORDINATE WITH LOCAL TELEPHONE COMPANY.
  13. REMOVE EXISTING WATER LATERAL
  14. REMOVE DRIVEWAY APRON
  15. ABANDON MONITORING WELLS IN ACCORDANCE WITH ADMINISTRATIVE CODE NR 141
  16. ADJUST MONITORING WELL
  17. SEE DEMOLITION LEGEND
  18. REMOVE EXISTING ELECTRIC PLUG-IN. CONTRACTOR TO DETERMINE PLACEMENT OF UNDERGROUND ELECTRIC LINE AND REMOVE.
  19. REMOVE FENCE
  20. REMOVE OVERHEAD TELEPHONE LINE
  21. REMOVE EXISTING STORM SEWER STRUCTURES
  22. REMOVE WELL
  23. REMOVE UNDERGROUND ELECTRIC LINE

- DEMOLITION PLAN LEGEND**
- 1. REMOVE EXISTING PAVEMENT HATCH
  - 2. REMOVE EXISTING CURB HATCH
  - 3. REMOVE EXISTING CONCRETE HATCH
  - 4. 2810 TODD DRIVE PROJECT LIMITS
  - 5. 2711 W. BELTLINE PROJECT LIMITS



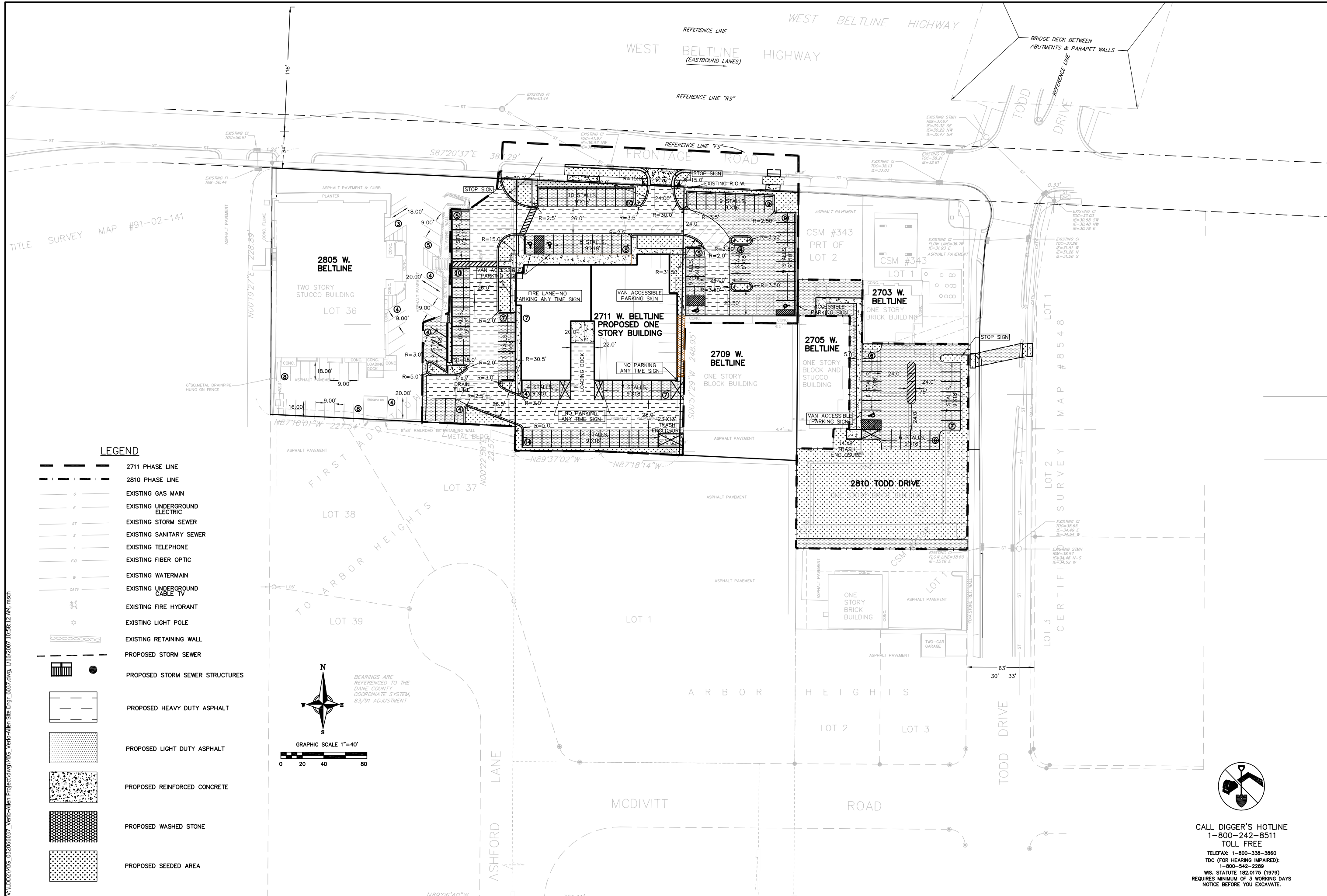
CALL DIGGER'S HOTLINE  
1-800-242-8511  
TOLL FREE  
TELEFAX: 1-800-338-3860  
TDC (FOR HEARING IMPAIRED):  
1-800-542-2289  
WS. STATUTE 182.0175 (1979)  
REQUIRES MINIMUM OF 3 WORKING DAYS  
NOTICE BEFORE YOU EXCAVATE.

**VIERBICHER ASSOCIATES**  
Committed to Quality Service Since 1976  
REEDSBURG - MADISON - PRAIRIE DU CHIEN  
999 First Street, Reedburg, WI 53151  
Phone: (608) 826-0532 Fax: (608) 826-0530

**Demolition Plan**  
Mortenson Investment Group  
2711 West Beltline Highway & 2810 Todd Drive  
Madison, Wisconsin

REVISIONS	NO.	DATE	REMARKS

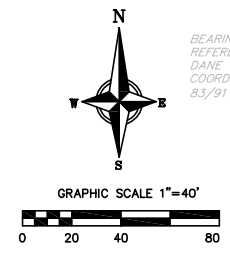
SCALE: AS SHOWN  
DATE: Jan. 16, 2007  
DRAFTER: MWS  
CHECKED: ABI  
PROJECT NO.: 032066037  
SHEET: C102  
DWG. NO.: No.



TITLE SURVEY MAP #91-02-141

**LEGEND**

- 2711 PHASE LINE
- 2810 PHASE LINE
- EXISTING GAS MAIN
- EXISTING UNDERGROUND ELECTRIC
- EXISTING STORM SEWER
- EXISTING SANITARY SEWER
- EXISTING TELEPHONE
- EXISTING FIBER OPTIC
- EXISTING WATERMAIN
- EXISTING UNDERGROUND CABLE TV
- EXISTING FIRE HYDRANT
- EXISTING LIGHT POLE
- EXISTING RETAINING WALL
- PROPOSED STORM SEWER
- PROPOSED STORM SEWER STRUCTURES
- PROPOSED HEAVY DUTY ASPHALT
- PROPOSED LIGHT DUTY ASPHALT
- PROPOSED REINFORCED CONCRETE
- PROPOSED WASHED STONE
- PROPOSED SEEDED AREA



**VIERBICHER ASSOCIATES**  
 Committed to Quality Service Since 1976  
**REDSBURG - MADISON - PRAIRIE DU CHIEN**  
 999 Foxglove Lane, Redsburg, WI 53117  
 Phone: (608) 826-0532 Fax: (608) 826-0530

**Site & Paving Plan**  
 Mortenson Investment Group  
 2711 West Beltline Highway & 2810 Todd Drive  
 Madison, Wisconsin

REVISIONS		REVISIONS	
NO.	DATE	NO.	DATE

SCALE: 1" = 40'

DATE: Jan. 16, 2007

DRAFTER: MWS

CHECKED: ABI

PROJECT NO.: 32066037

SHEET: C103

DWG. NO.: No.

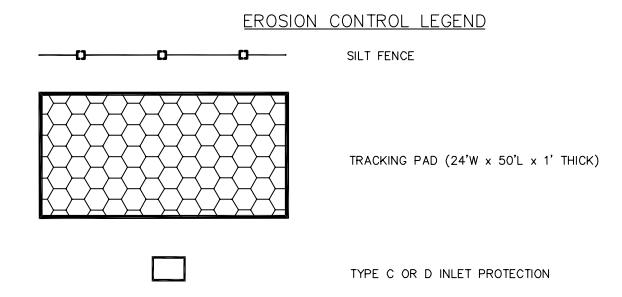
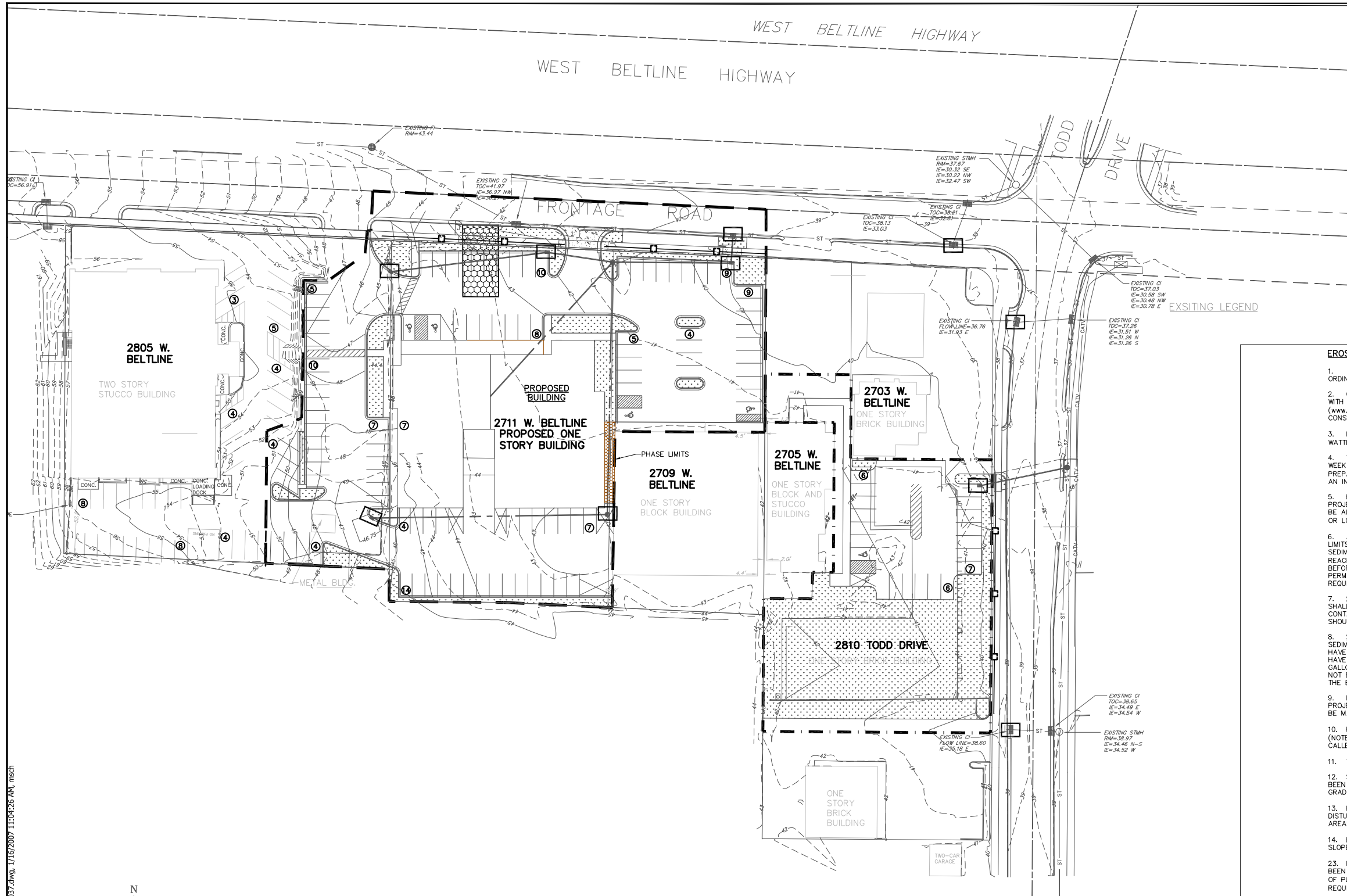
CALL DIGGER'S HOTLINE  
 1-800-242-8511  
 TOLL FREE  
 TELEFAX: 1-800-338-3860  
 TDC (FOR HEARING IMPAIRED):  
 1-800-542-2289  
 WIS. STATUTE 182.0175 (1979)  
 REQUIRES MINIMUM OF 3 WORKING DAYS  
 NOTICE BEFORE YOU EXCAVATE.



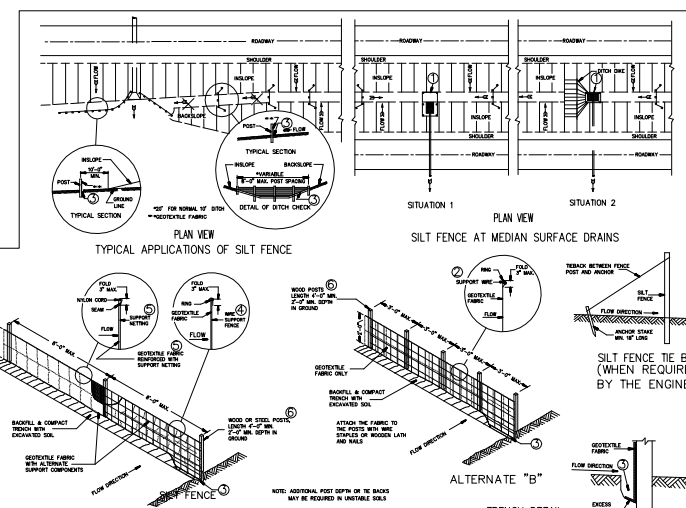
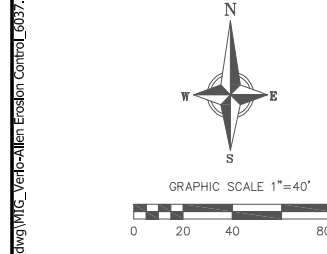








- EROSION CONTROL MEASURES:**
- EROSION CONTROL SHALL BE IN ACCORDANCE WITH THE CITY OF MADISON EROSION CONTROL ORDINANCE AND CHAPTER NR 216 OF THE WISCONSIN ADMINISTRATIVE CODE.
  - CONSTRUCT AND MAINTAIN ALL EROSION AND SEDIMENT CONTROL MEASURES IN ACCORDANCE WITH WISCONSIN DNR TECHNICAL STANDARDS ([www.dnr.state.wi.us/drg/water/wm/nps/stormwater/techstds.htm#construction](http://www.dnr.state.wi.us/drg/water/wm/nps/stormwater/techstds.htm#construction)) AND WISCONSIN CONSTRUCTION SITE BEST MANAGEMENT PRACTICE HANDBOOK.
  - INSTALL SEDIMENT CONTROL PRACTICES (SEDIMENT BASINS, PERIMETER SILT FENCING OR STRAW WATLES, ETC.) PRIOR TO INITIATING OTHER LAND DISTURBING CONSTRUCTION ACTIVITIES.
  - THE CONTRACTOR IS REQUIRED TO MAKE EROSION CONTROL INSPECTIONS AT THE END OF EACH WEEK AND WHEN 0.5 INCHES OF RAIN FALLS WITHIN 24 HOURS. INSPECTION REPORTS SHALL BE PREPARED AND FILED AS REQUIRED BY THE DNR AND/OR VILLAGE. ALL MAINTENANCE WILL FOLLOW AN INSPECTION WITHIN 24 HOURS.
  - EROSION CONTROL IS THE RESPONSIBILITY OF THE CONTRACTOR UNTIL ACCEPTANCE OF THIS PROJECT. EROSION CONTROL MEASURES AS SHOWN SHALL BE THE MINIMUM PRECAUTIONS THAT WILL BE ALLOWED. ADDITIONAL EROSION CONTROL MEASURES, AS REQUESTED IN WRITING BY THE STATE OR LOCAL INSPECTORS, OR THE DEVELOPER'S ENGINEER, SHALL BE INSTALLED WITHIN 24 HOURS.
  - A 3" CLEAR STONE TRACKING PAD SHALL BE INSTALLED AT THE END OF ROAD CONSTRUCTION LIMITS TO PREVENT SEDIMENT FROM BEING TRACKED ONTO THE ADJACENT PAVED PUBLIC ROADWAY. SEDIMENT TRACKING PAD SHALL CONFORM TO WISCONSIN TECHNICAL STANDARD 1001. SEDIMENT REACHING THE PUBLIC ROAD SHALL BE REMOVED BY STREET CLEANING (NOT HYDRAULIC FLUSHING) BEFORE THE END OF EACH WORK DAY. THE SITE IS CONSIDERED RECONSTRUCTION AND WILL HAVE PERMANENT BASE COURSE THROUGHOUT CONSTRUCTION. TRACKING PAD SHALL BE INSTALLED UPON REQUEST FROM CITY OFFICIAL OR ENGINEER.
  - STABILIZED DISTURBED GROUND: ALL DISTURBED GROUND AND SOIL OR DIRT STORAGE PILES SHALL BE CONTAINED ON THE SITE BY FILTER BARRIERS OR OTHER SUITABLE MEANS. THE CONTAINMENT MEASURES SHALL REMAIN IN PLACE UNTIL SITE HAS STABILIZED. NO STOCKPILES SHOULD BE PLACED WITHIN 20 FEET OF A DRAINAGEWAY.
  - SITE DE-WATERING: WATER PUMPED FROM THE SITE SHALL BE TREATED BY TEMPORARY SEDIMENTATION BASINS OR OTHER APPROPRIATE CONTROL MEASURES. SEDIMENTATION BASINS SHALL HAVE A DEPTH OF AT LEAST 3 FEET, BE SURROUNDED BY SNOWFENCE OR EQUIVALENT BARRIER AND HAVE SUFFICIENT SURFACE AREA TO PROVIDE A SURFACE SETTLING RATE OF NO MORE THAN 1,500 GALLONS PER SQUARE FOOT PER DAY AT THE HIGHEST DEWATERING PUMPING RATE. WATER MAY NOT BE DISCHARGED IN A MANNER THAT CAUSES EROSION OF THE SITE, A NEIGHBORING SITE, OR THE BED OR BANKS OF THE RECEIVING WATER.
  - INLET FILTERS ARE TO BE PLACED IN THE STORM STRUCTURE AS SOON AS IT IS SET. ALL PROJECT AREA STORM INLETS NEED WISCONSIN D.O.T. TYPE D INLET PROTECTION. THE FILTER SHALL BE MAINTAINED UNTIL THE CITY HAS ACCEPTED THE BINDER COURSE OF ASPHALT.
  - RESTORATION (SEED, FERTILIZE AND MULCH) SHALL BE PER SPECIFICATIONS ON THIS SHEET (NOTE: ADD SEEDING RATE STANDARD OF DETAIL BLOCK TO PLAN) UNLESS SPECIAL RESTORATION IS CALLED FOR ON THE LANDSCAPE PLAN OR THE DETENTION BASIN DETAIL SHEET.
  - TERRACES SHALL BE RESTORED WITH 6" TOPSOIL, PERMANENT SEED, FERTILIZER AND MULCH.
  - SEED, FERTILIZER AND MULCH SHALL BE COMPLETE WITHIN 7 DAYS AFTER FINAL GRADE HAS BEEN ESTABLISHED. IF DISTURBED AREAS WILL NOT BE RESTORED IMMEDIATELY AFTER ROUGH GRADING, TEMPORARY SEED SHALL BE PLACED.
  - FOR THE FIRST SIX WEEKS AFTER RESTORATION (E.G. SEED & MULCH, EROSION MAT, SOD) OF A DISTURBED AREA INCLUDING SUMMER WATERING PROVISIONS OF ALL NEWLY SEEDED AND MULCHED AREAS WHENEVER 7 DAYS ELAPSE WITHOUT A RAIN EVENT.
  - EROSION MAT (TYPE I CLASS A PER WISCONSIN D.O.T. P.A.L.) SHALL BE INSTALLED ON ALL SLOPES 3:1 OR GREATER BUT LESS THAN 1:1.
  - INSTALL MINIMUM 6"-7" WIDE EROSION MAT ALONG THE BACK OF CURB AFTER TOPSOIL HAS BEEN PLACED IN THE TERRACE IF THIS AREA WILL NOT BE SEEDED AND MULCHED WITHIN 48 HOURS OF PLACING TOPSOIL. (NOTE: CHECK WITH MUNICIPALITY AND PROJECT MANAGER IF THIS IS REQUIRED.)
  - SEDIMENT SHALL BE CLEANED FROM CURB AND GUTTER AFTER RAIN AND PRIOR TO PROJECT ACCEPTANCE.
  - ALL THE CONSTRUCTION ENTRANCES SHALL HAVE TEMPORARY ROAD CLOSED SIGNS THAT WILL BE IN PLACE WHEN THE ENTRANCE IS NOT TO BE USED AND AT THE END OF EACH DAY.
  - ANY PROPOSED CHANGES TO THE EROSION CONTROL PLAN MUST BE SUBMITTED AND APPROVED BY THE CITY OF MADISON OR PERMITTING MUNICIPALITY.
  - THE CITY, OWNER AND/OR ENGINEER MAY REQUIRE ADDITIONAL EROSION CONTROL MEASURES AT ANY TIME DURING CONSTRUCTION.



**GENERAL NOTES**

DETAIL OF CONSTRUCTION NOT SHOWN ON THIS DRAWING SHALL CONFORM TO THE PERTINENT REQUIREMENTS OF THE SPECIFICATIONS.

WHEN POSSIBLE, THE SILT FENCE SHOULD BE CONSTRUCTED IN AN ARC OR HORSESHOE SHAPE, WITH THE ENDS POINTING UPSLOPE TO MAXIMIZE BOTH STRENGTH AND EFFECTIVENESS.

CROSS BRACE WITH 2" x 4" WOODEN FRAME OR EQUIVALENT AT TOP OF POSTS AS DIRECTED BY THE ENGINEER.

① MINIMUM 14 GAGE WIRE REQUIRED, FOLD FABRIC 3" OVER THE WIRE AND STAPLE OR PLACE WIRE RINGS ON 12" C-C.

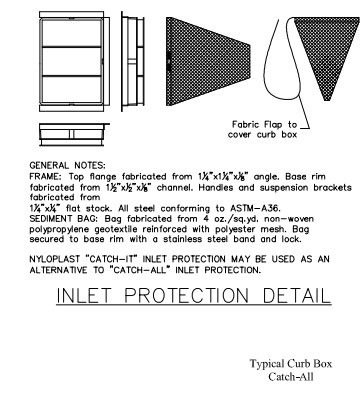
② EXCAVATE A TRENCH A MINIMUM OF 4" DEEP TO BURY AND ANCHOR THE GEOTEXTILE FABRIC. FOLD MATERIAL TO FIT TRENCH AND BACKFILL & COMPACT TRENCH WITH EXCAVATED SOIL.

③ WIRE SUPPORT FENCE SHALL BE 14 GAGE MINIMUM WOVEN WIRE WITH A MAXIMUM MESH SPACING OF 6", SECURE TOP OF GEOTEXTILE FABRIC TO TOP OF FENCE WITH STAPLES OR WIRE RINGS AT 12" C-C.

④ GEOTEXTILE FABRIC SHALL BE REINFORCED WITH AN INDUSTRIAL POLYPROPYLENE NETTING WITH A MAXIMUM MESH SPACING OF 6" OR EQUAL. A HEAVY DUTY NYLON TOP SUPPORT CORD OR EQUIVALENT IS REQUIRED.

⑤ STEEL POSTS SHALL BE STUDDED "TEE" OR "U" TYPE WITH A MINIMUM WEIGHT OF 1.28 LBS./LINEAL FOOT 9" WITHOUT ANCHOR). FIN ANCHORS SUFFICIENT TO RESIST POST MOVEMENT ARE REQUIRED. WOOD POSTS SHALL BE A MINIMUM SIZE OF 4" DIA. OR 1" x 3" EXCEPT WOOD POSTS FOR GEOTEXTILE FABRIC REINFORCED WITH NETTING SHALL BE A MINIMUM SIZE OF 1" x 1" OAK OR HICKORY.

⑥ ALTERNATES A & B ARE EQUAL AND EITHER MAY BE USED.



- CONSTRUCTION SEQUENCE:**
- INSTALL SILT FENCE AND TRACKING PAD
  - STRIP TOPSOIL-PARKING/DRIVE AREAS
  - ROUGH GRADE PARKING, DRIVE AND BUILDING AREAS
  - CONSTRUCT UNDERGROUND UTILITIES
  - INSTALL INLET PROTECTION
  - CONSTRUCT ROADS (STONE BASE, CURB & GUTTER, AND SIDEWALK).
  - RESTORE TERRACES AND PERMEABLE AREAS
  - REMOVE TRACKING PAD AND SILT FENCE

**SEEDING RATES:**

**TEMPORARY:**  
 1. USE ANNUAL OATS AT 3.0 LB./1,000 S.F. FOR SPRING AND SUMMER PLANTINGS.  
 2. USE WINTER WHEAT OR RYE AT 3.0 LB./1,000 SF FOR FALL PLANTINGS STARTED AFTER SEPTEMBER 15.

**PERMANENT:**  
 1. USE WISCONSIN D.O.T. SEED MIX #40 AT 2 LB./1,000 S.F.

**FERTILIZING RATES:**

**TEMPORARY AND PERMANENT:**  
 USE WISCONSIN D.O.T. TYPE A OR B AT 7 LB./1,000 S.F.

**MULCHING RATES:**

**TEMPORARY AND PERMANENT:**  
 USE 1/2" TO 1-3/4" STRAW OR HAY MULCH, CRIMPED PER SECTION 607.3.2.3, OR OTHER RATE AND METHOD PER SECTION 627, WISCONSIN D.O.T. STANDARD SPECIFICATIONS FOR HIGHWAY AND STRUCTURE CONSTRUCTION

**VIERBICHER ASSOCIATES**  
 Committed to Quality Service Since 1976  
 REEDSBURG - MADISON - PRAIRIE DU CHIEN  
 999 Fox River Parkway, Reedsville, WI 53577  
 Phone: (608) 826-0532 Fax: (608) 826-0530

**Erosion Control Plan**  
 Mortenson Investment Group  
 2711 West Beltline Highway & 2810 TODD DRIVE  
 Madison, Wisconsin

REVISIONS	NO.	DATE	REMARKS

**SCALE**  
 AS SHOWN

**DATE**  
 Jan. 16, 2007

**DRAFTER**  
 MWS

**CHECKED**  
 ABI

**PROJECT NO.**  
 032066037

**SHEET**  
 C106

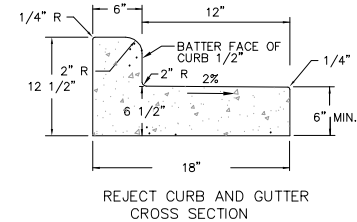
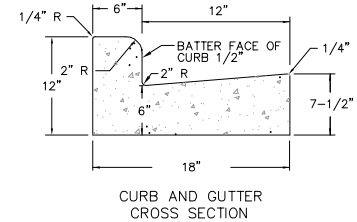
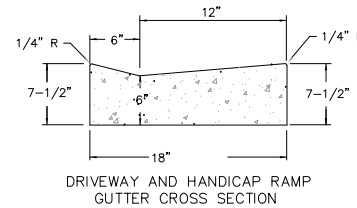
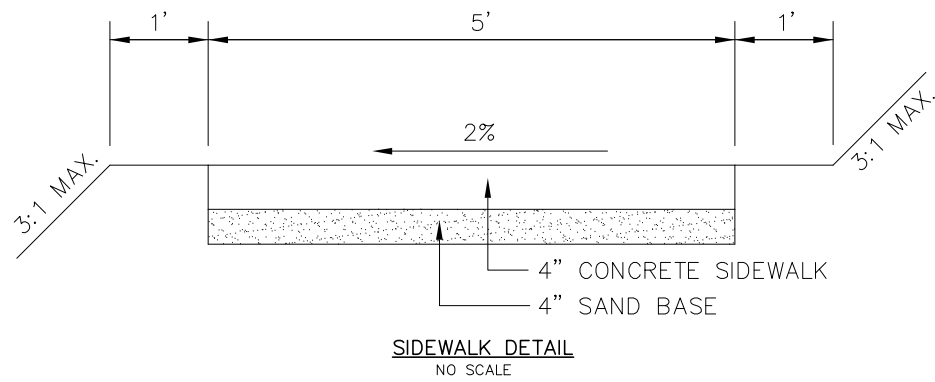
**DWG. NO.**  
 No.

V:\LD02\WC\_032066037\_Vierbicher\Project\wg\WC\_Vierbicher\Plan Erosion Control\_6037.dwg, 1/16/2007 11:04:26 AM, mscb

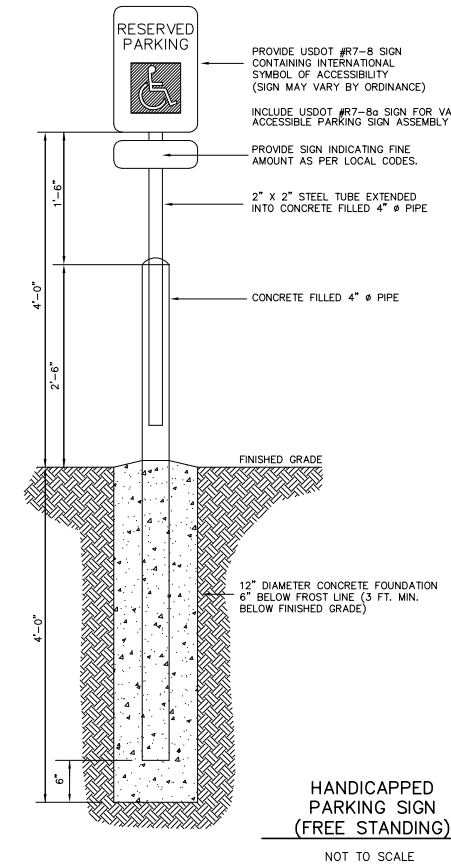




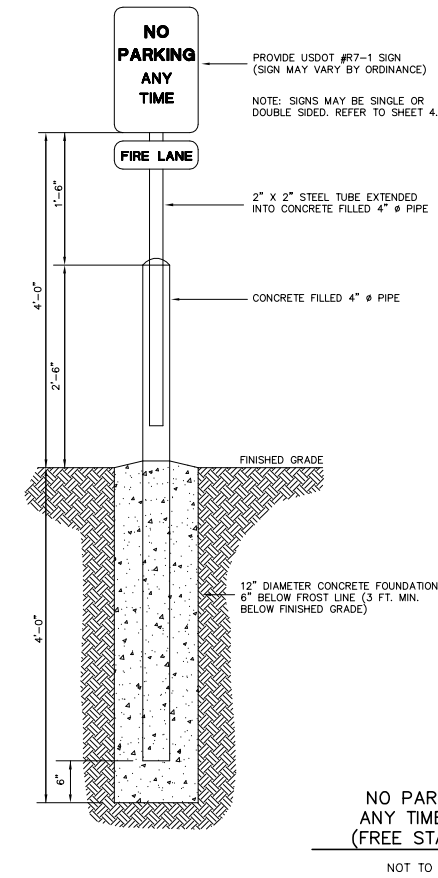




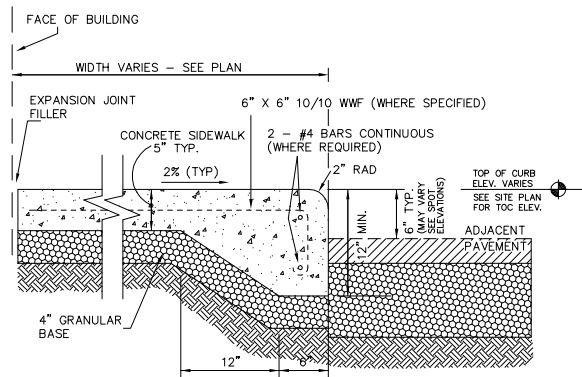
CONCRETE CURB AND GUTTER  
NO SCALE



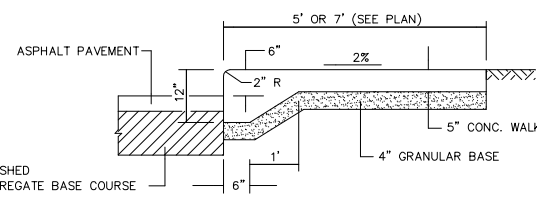
HANDICAPPED PARKING SIGN  
(FREE STANDING)  
NOT TO SCALE



NO PARKING ANY TIME SIGN  
(FREE STANDING)  
NOT TO SCALE



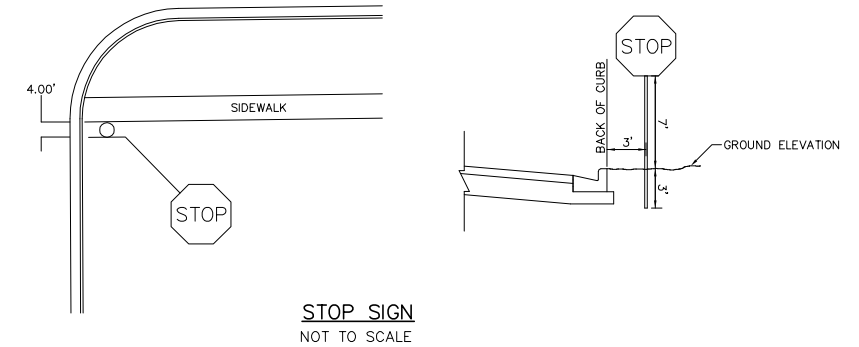
CURBED SIDEWALK DETAIL  
NOT TO SCALE



CURBED SIDEWALK SITE DETAIL  
NOT TO SCALE

SIGNAGE NOTES:

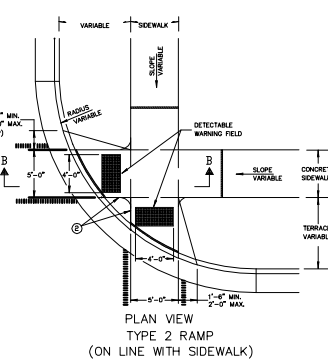
- ALL SIGNS SHALL BE FABRICATED AND INSTALLED IN ACCORDANCE WITH THE MANUAL ON UNIFORM TRAFFIC CONTROL DEVICES.
- SIGNS SHALL BE A DISTANCE OF 7" FROM GROUND LEVEL TO THE BOTTOM OF THE SIGN MOUNTED ON THE POST AND LOCATED 3' BEHIND THE BACK OF CURB.
- SIGN POSTS SHALL BE 2-3/8" O.D. GALVANIZED 10 FT LONG, 13 GAUGE, AND 0.095 WALL THICKNESS MOUNT SIGN AT TOP OF THE POST, AND INSTALL POSTS 3' DEEP AND MIX 1/2 BAG OF 80 LB SAKRETE CONCRETE POURING IT AROUND THE POST BELOW THE GROUND BEFORE COVERING WITH 8" OF TOPSOIL.



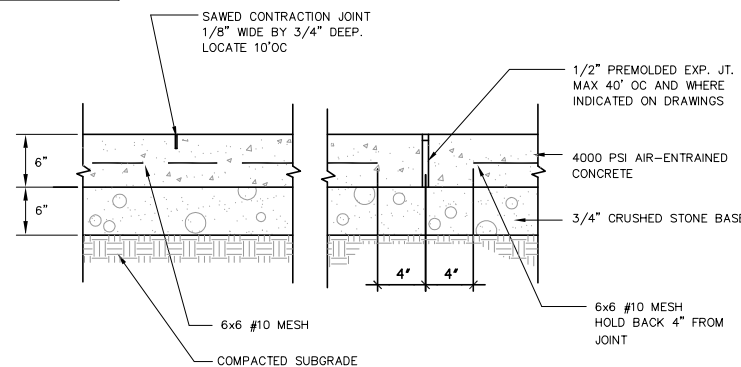
STOP SIGN  
NOT TO SCALE

GENERAL NOTES

- TYPE 2-R RAMPS SHALL BE USED IN NEW DEVELOPMENT UNLESS OTHERWISE APPROVED BY THE CITY ENGINEER.
- DETAILS OF CONSTRUCTION, MATERIALS AND WORKMANSHIP NOT SHOWN ON THIS DRAWING SHALL CONFORM TO THE PRESENT REQUIREMENTS OF THE STANDARD SPECIFICATIONS AND THE APPLICABLE SPECIAL PROVISIONS.
- RAMPS SHALL BE BUILT AT 12H:1V OR FLATTER, WHEN NECESSARY, THE SIDEWALK ELEVATION MAY BE LOWERED TO MEET THE HIGH POINT ON THE RAMP.
- DETECTABLE WARNING FIELD SHALL BE MEASURED AND PAID BY THE SQUARE FOOT AS "CURB RAMP DETECTABLE WARNING FIELD".
- CURB RAMP DETECTABLE WARNING FIELD MATERIALS AND DEVICES SHALL BE APPROVED BY THE CITY ENGINEER. THE COLOR OF THE DETECTABLE WARNING FIELD SHALL BE SAFETY YELLOW AND IS INCIDENTAL TO THE BID ITEM OF "CURB RAMP DETECTABLE WARNING FIELD".
- SURFACE TEXTURE OF THE RAMP SHALL BE OBTAINED BY CORNICE BROOMING TRANSVERSE TO THE SLOPE OF THE RAMP.
- THIS POINT IS AN EXTENSION OF OUTSIDE EDGE OF APPROACHING SIDEWALK WHERE IT MEETS THE BACK OF CONCRETE CURB.
- WHEN THIS DISTANCE IS LESS THAN 6'-0" IT MAY BE DIFFICULT TO ACHIEVE A 12H:1V SLOPE, OR FLATTER, ON THE RAMP, REDUCE CURB HEIGHT IN TRIANGLE AREA TO ACHIEVE 12H:1V SLOPE, OR FLATTER, ON RAMP, 2" MINIMUM CURB HEIGHT.

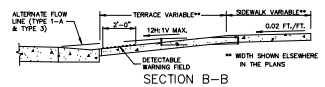


PLAN VIEW  
TYPE 2 RAMP  
(ON LINE WITH SIDEWALK)

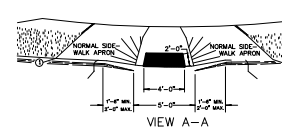


CONCRETE APRON AND TRUCK DOCK  
NOT TO SCALE

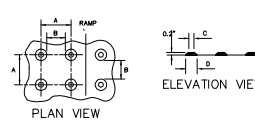
- LEGEND
- 1/2" EXPANSION JOINT-SIDEWALK
  - CONTRACTION JOINT FIELD LOCATED
  - PAVEMENT MARKING CROSSWALK (DASHED)
  - ALTERNATIVE LAYOUT



SECTION B-B



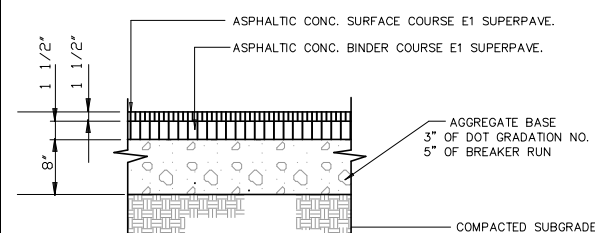
VIEW A-A



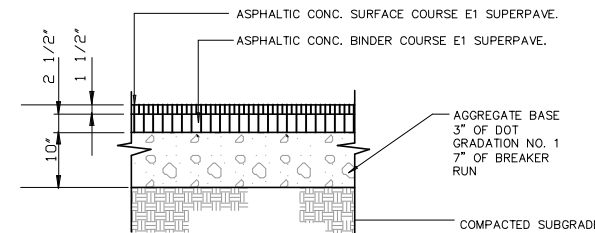
PLAN VIEW

TRUNCATED DOMES  
DETECTABLE WARNING  
PATTERN DETAIL

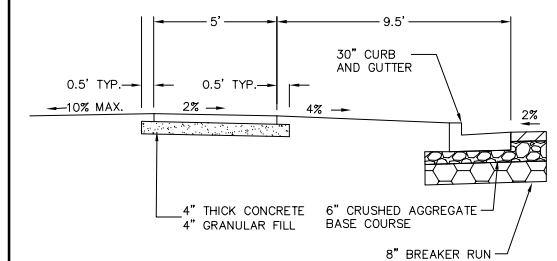
HANDICAP RAMP DETAIL  
NOT TO SCALE



ASPHALT PAVEMENT-LIGHT DUTY  
NOT TO SCALE



ASPHALT PAVEMENT-HEAVY DUTY  
NOT TO SCALE



TYPICAL TERRACE CROSS SECTION

REVISIONS	NO.	DATE	REMARKS

SCALE  
AS SHOWN

DATE  
Jan. 16, 2007

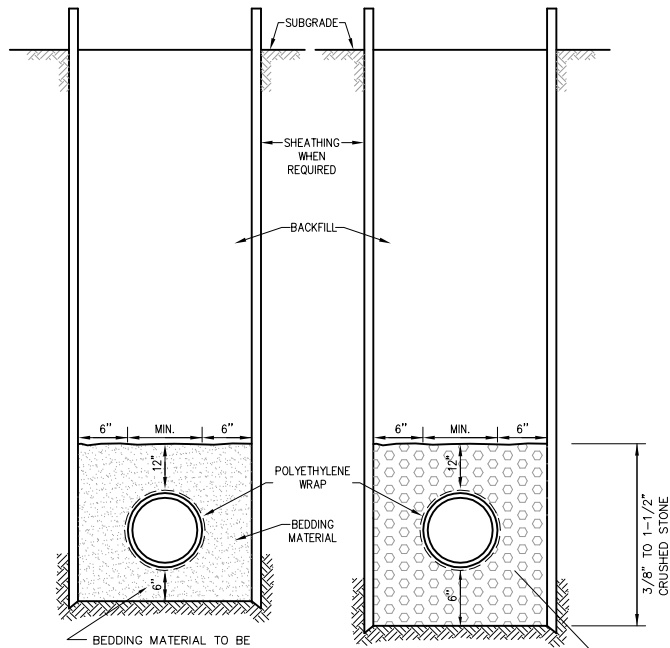
DRAFTER  
MWS

CHECKED  
ABI

PROJECT NO.  
032066037

SHEET  
C501

DWG. NO.  
No.



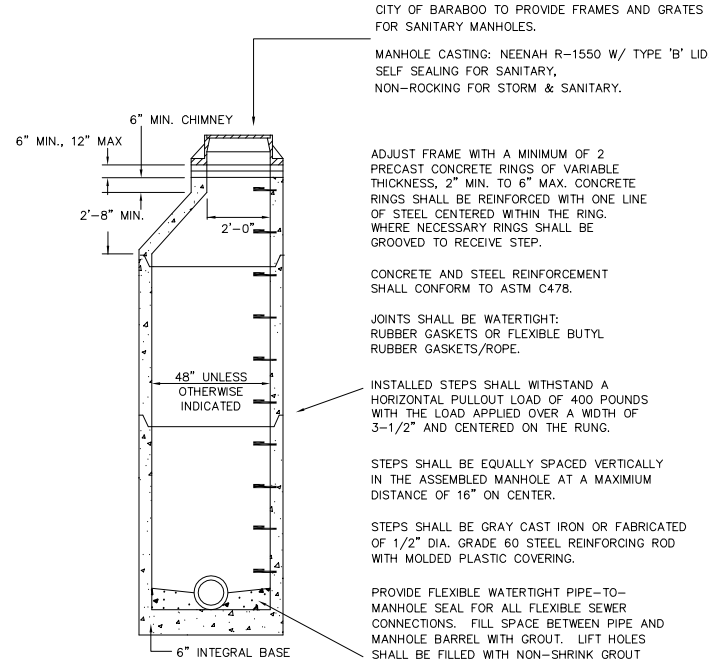
**STANDARD TRENCH SECTION**  
NO SCALE

**WET OR UNSTABLE CONDITION**  
BEDDING MATERIAL: 3/8" TO 1/2" CRUSHED STONE

**DRY TRENCH CONDITION**  
BEDDING MATERIAL TO BE PLACED BEFORE SETTING PIPE - 6" MINIMUM UNDER BARREL WITH 5" UNDER BELL

**SANITARY SEWER:** 3/8" TO 1-1/2" CRUSHED STONE

**STORM SEWER:** 3/4" TO 1-1/2" CRUSHED STONE



**PRECAST CONCRETE MANHOLE**  
NO SCALE

CITY OF BARABOO TO PROVIDE FRAMES AND GRATES FOR SANITARY MANHOLES.

MANHOLE CASTING: NEENAH R-1550 W/ TYPE 'B' LID. SELF SEALING FOR SANITARY, NON-ROCKING FOR STORM & SANITARY.

ADJUST FRAME WITH A MINIMUM OF 2 PRECAST CONCRETE RINGS OF VARIABLE THICKNESS, 2" MIN. TO 6" MAX. CONCRETE RINGS SHALL BE REINFORCED WITH ONE LINE OF STEEL CENTERED WITHIN THE RING. WHERE NECESSARY RINGS SHALL BE GROOVED TO RECEIVE STEP.

CONCRETE AND STEEL REINFORCEMENT SHALL CONFORM TO ASTM C478.

JOINTS SHALL BE WATERTIGHT: RUBBER GASKETS OR FLEXIBLE BUTYL RUBBER GASKETS/ROPE.

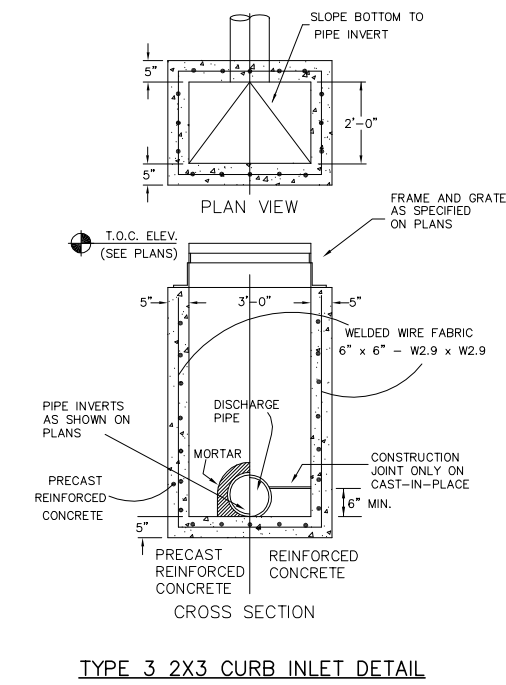
INSTALLED STEPS SHALL WITHSTAND A HORIZONTAL PULLOUT LOAD OF 400 POUNDS WITH THE LOAD APPLIED OVER A WIDTH OF 3-1/2" AND CENTERED ON THE RUNG.

STEPS SHALL BE EQUALLY SPACED VERTICALLY IN THE ASSEMBLED MANHOLE AT A MAXIMUM DISTANCE OF 16" ON CENTER.

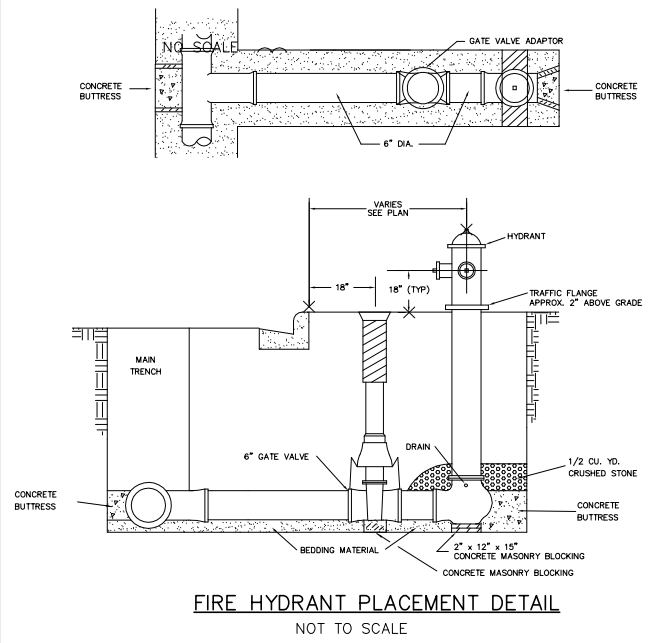
STEPS SHALL BE GRAY CAST IRON OR FABRICATED OF 1/2" DIA. GRADE 60 STEEL REINFORCING ROD WITH MOLDED PLASTIC COVERING.

PROVIDE FLEXIBLE WATERTIGHT PIPE-TO-MANHOLE SEAL FOR ALL FLEXIBLE SEWER CONNECTIONS. FILL SPACE BETWEEN PIPE AND MANHOLE BARREL WITH GROUT. LIFT HOLES SHALL BE FILLED WITH NON-SHRINK GROUT

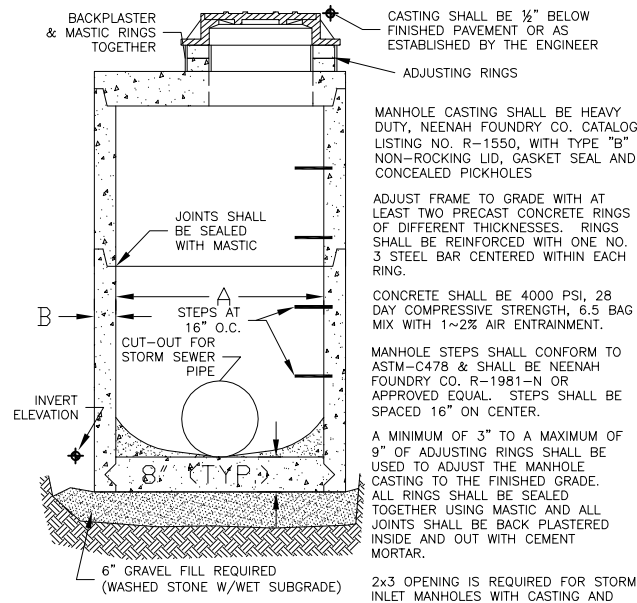
BENCH SLOPE:  
STORM MANHOLE - 1" PER FOOT  
SANITARY MANHOLE - 2" PER FOOT



**TYPE 3 2X3 CURB INLET DETAIL**



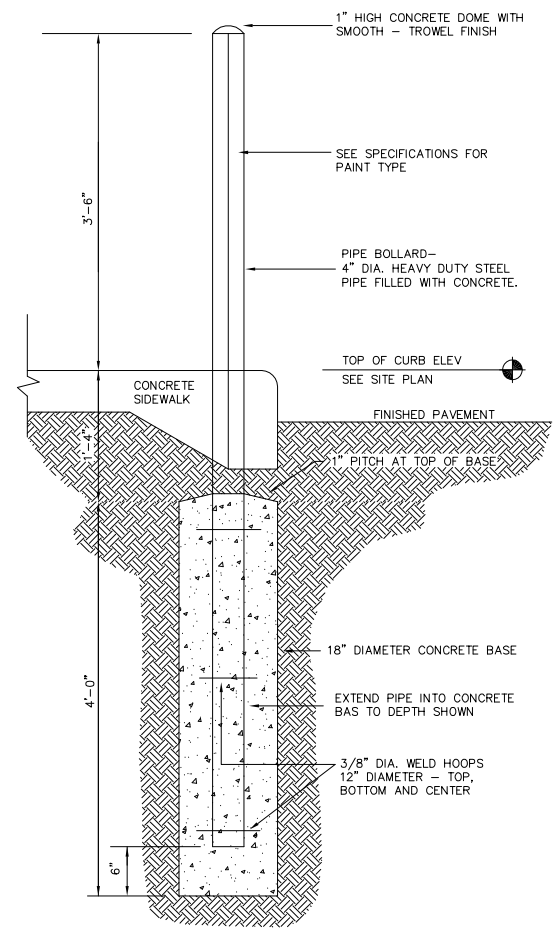
**FIRE HYDRANT PLACEMENT DETAIL**  
NOT TO SCALE



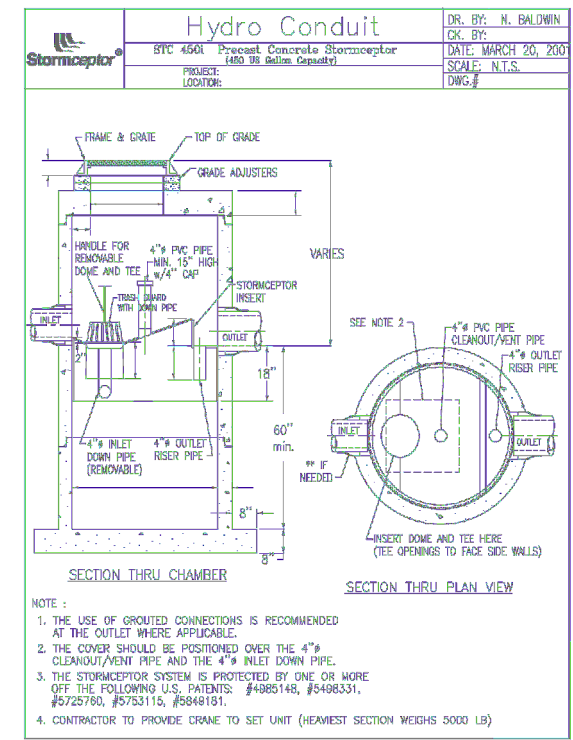
**STORM MANHOLE DIMENSIONS**

MANHOLE SIZE	DIMENSION	
	A	B (MIN.)
48"	48"	5"
60"	60"	6"
72"	72"	7"
84"	84"	7"
96"	96"	9"

**STORM SEWER MANHOLE DETAIL**

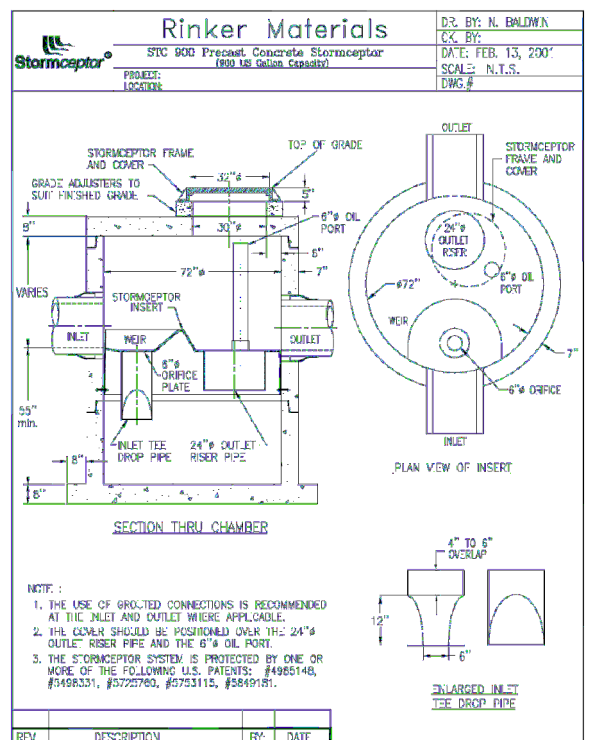


**BOLLARD DETAIL**



NOTE:

1. THE USE OF GROUTED CONNECTIONS IS RECOMMENDED AT THE INLET AND OUTLET WHERE APPLICABLE.
2. THE COVER SHOULD BE POSITIONED OVER THE 4" INLET DOWN PIPE AND THE 4" INLET DOWN PIPE.
3. THE STORMCEPTOR SYSTEM IS PROTECTED BY ONE OR MORE OF THE FOLLOWING U.S. PATENTS: #4985148, #5498331, #5725780, #5753115, #5848181.
4. CONTRACTOR TO PROVIDE CRANE TO SET UNIT (HEAVIEST SECTION WEIGHS 5000 LB)



NOTE:

1. THE USE OF GROUTED CONNECTIONS IS RECOMMENDED AT THE INLET AND OUTLET WHERE APPLICABLE.
2. THE COVER SHOULD BE POSITIONED OVER THE 24" OUTLET RISER PIPE AND THE 6" OIL PORT.
3. THE STORMCEPTOR SYSTEM IS PROTECTED BY ONE OR MORE OF THE FOLLOWING U.S. PATENTS: #4985148, #5498331, #5725780, #5753115, #5848181.

REVISIONS	NO.	DATE	REMARKS

SCALE: AS SHOWN

DATE: Jan. 16, 2007

DRAFTER: MWS

CHECKED: ABI

PROJECT NO.: 032066037

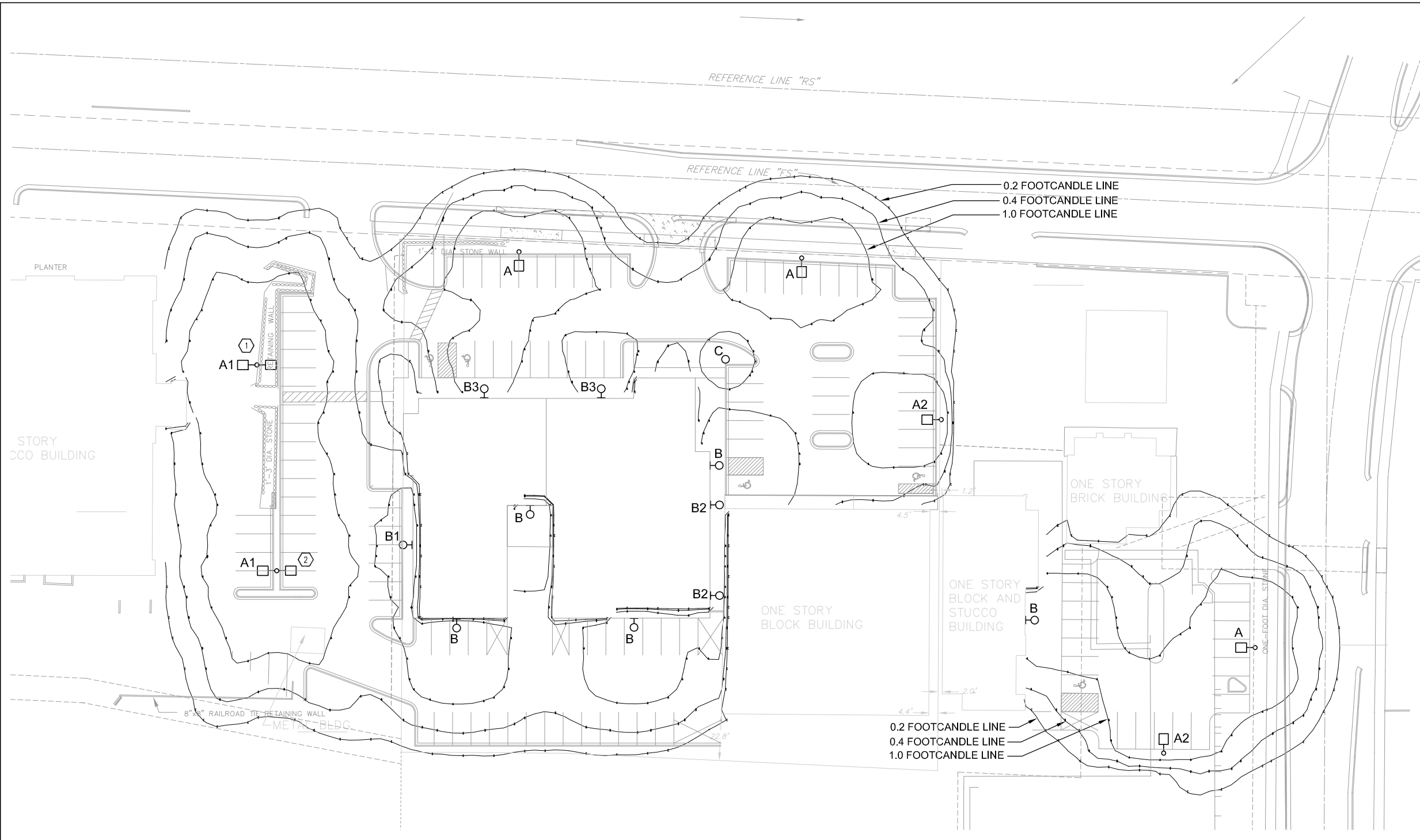
SHEET: C502

DWG. NO.: No.

Consultants:

Notes:

- ① REPLACE LIGHT FIXTURE HEAD ON EXISTING 20' POLE WITH LIGHT FIXTURE TYPE A1.
- ② MOVE POLE TO NEW LOCATION SHOWN. REPLACE LIGHT FIXTURE HEAD ON EXISTING 20' POLE WITH LIGHT FIXTURE TYPE A1.



1 SITE LIGHTING PLAN  
E101 1" = 20'-0"

LIGHT FIXTURE SCHEDULE										
TYPE	LAMP				MANUFACTURER	CATALOG NO.	VOLTAGE	DESCRIPTION		
	TYPE	QTY	WATTAGE	DESCRIPTION						
A	MH	1	250	250W/H75/PS	LITHONIA	KAC-250M-SR3-208-SP004-DOB-SOWA-SSS-20-DOB	208V	SINGLE FULL CUT OFF POLE LIGHT, TYPE 3 DISTRIBUTION, 20' STRAIGHT SQUARE STEEL POLE, DARK BRONZE		
A1	MH	2	250	250W/H75/PS	LITHONIA	KAC-250M-SR3-208-SP004-DOUBLE HEAD-DOB-SOWA	208V	DOUBLE FULL CUT OFF POLE LIGHT, TYPE 3 DISTRIBUTION, EXISTING 20' POLE		
A2	MH	1	250	250W/H75/PS	LITHONIA	KAC-250M-SR4SC-208-SP004-DOB-SOWA-SSS-20-DOB	208V	SINGLE FULL CUT OFF POLE LIGHT, TYPE 4 DISTRIBUTION, 20' STRAIGHT SQUARE STEEL POLE, DARK BRONZE		
B	MH	1	250	250W/H75/PS	LITHONIA	KAC-250M-SR4SC-208-WB004-DOB	208V	FULL CUT OFF LIGHT, TYPE 4 DISTRIBUTION, WALL MOUNT, DARK BRONZE		
B1	MH	1	100	MPD100/U/MED/840	LITHONIA	WSR-100M-WT-208-DOB1	208V	FULL CUT OFF EXTERIOR WALL SCENCE, WIDE THROW DISTRIBUTION, WALL MOUNT, DARK BRONZE		
B2	MH	1	100	MPD100/U/MED/840	LITHONIA	TWH-100M-DOB	208V	WALL PACK, DARK BRONZE (LOCATED IN ALLEY BETWEEN BUILDINGS)		
B3	MH	1	100	MPD100/U/MED/840	LITHONIA	WSR-100M-FT-208-DOB1	208V	FULL CUT OFF EXTERIOR WALL SCENCE, FORWARD THROW DISTRIBUTION, WALL MOUNT, DARK BRONZE		
C	MH	1	100	MPD100/U/MED/840	KIM	VRB1-100MH20-BL-P	120V	LIGHTED BOLLARD WITH LOUVERS, BLACK		

NOTES:  
1. ALL LAMPS AND BALLASTS PULSE START.

1/16/07	PRELIMINARY REVIEW	
1/10/07	PRELIMINARY DRAWINGS	
Date	Issuance/Revisions	Symbol

CENTRAL BELTLINE DESIGN CENTER

2711 WEST BELTLINE FRONTAGE ROAD  
MADISON, WISCONSIN

Drawing Title:  
SITE LIGHTING PLAN

PLI Project Number: 2007.01.00	Drawing No. E101
Drawn By: JVD	

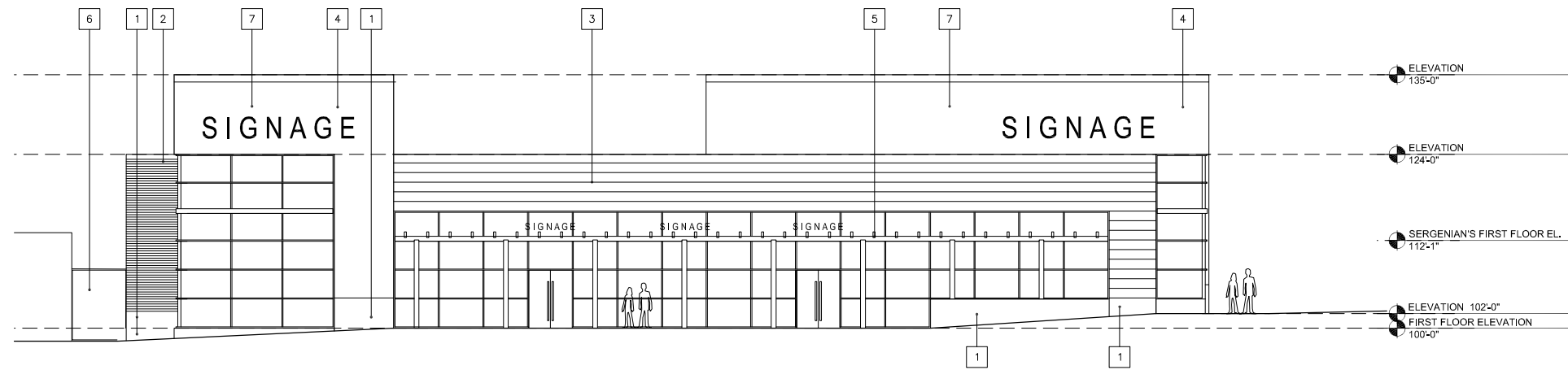


Consultants:

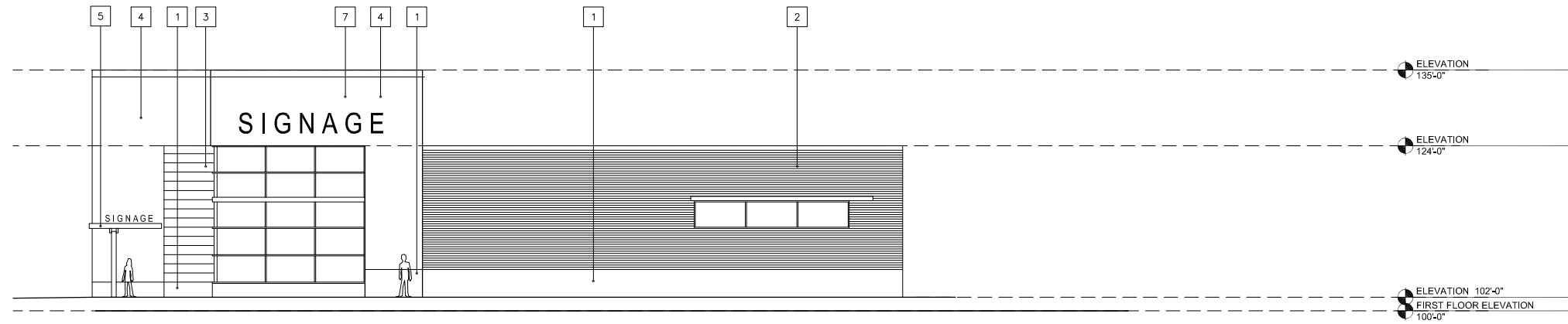
Notes:

KEY NOTES:

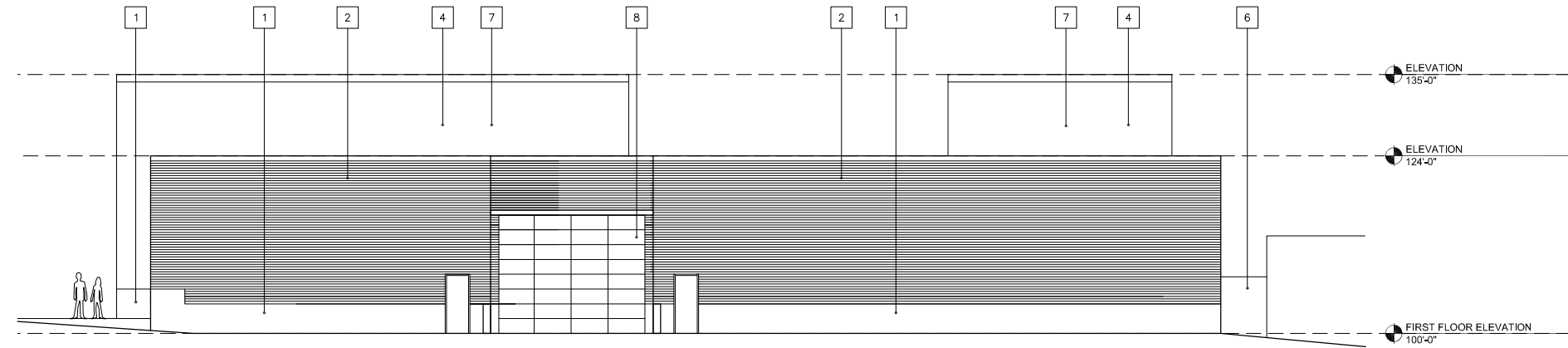
- 1 SITE CAST CONCRETE
- 2 RIBBED METAL PANEL
- 3 FLAT SEAMED METAL PANEL
- 4 EIFS EXTERIOR INSULATED FINISHING SYSTEM
- 5 STEEL PERGOLA
- 6 LOCKED GATE
- 7 ROOFTOP MECHANICALS SCREENED BEHIND WALL
- 8 LOADING DOCK DOOR



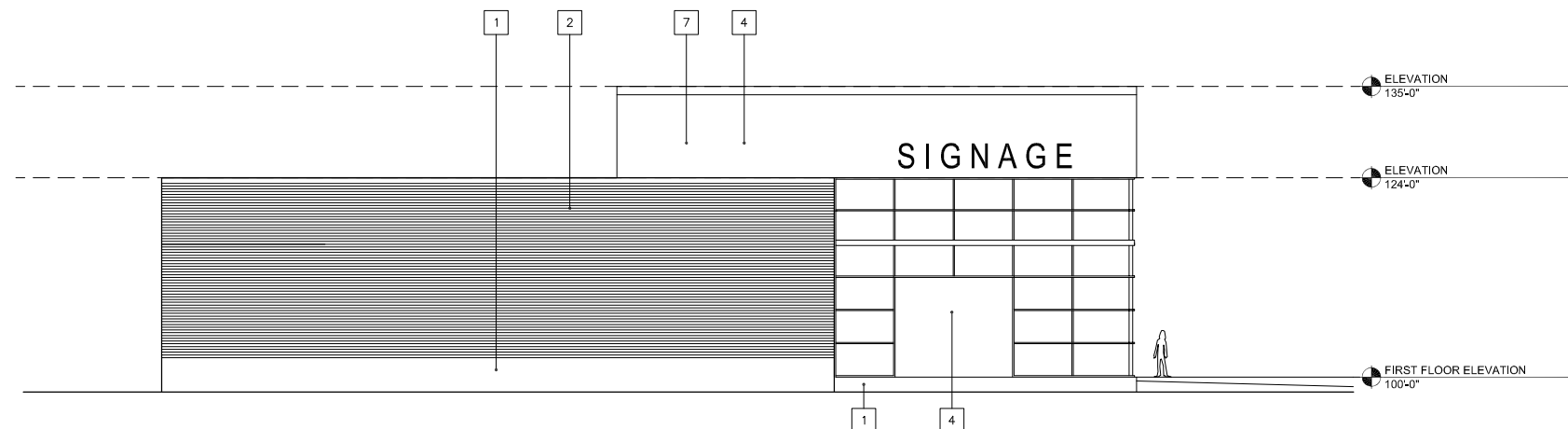
1 NORTH ELEVATION  
A201 1/8" = 1'-0"



2 WEST ELEVATION  
A201 1/8" = 1'-0"



3 SOUTH ELEVATION  
A201 1/8" = 1'-0"



4 EAST ELEVATION  
A201 1/8" = 1'-0"

Date	Issuance/Revisions	Symbol
01/16/07	PRELIMINARY REVIEW	
01/11/07	PRELIMINARY DRAWINGS	

CENTRAL BELTLINE  
DESIGN CENTER

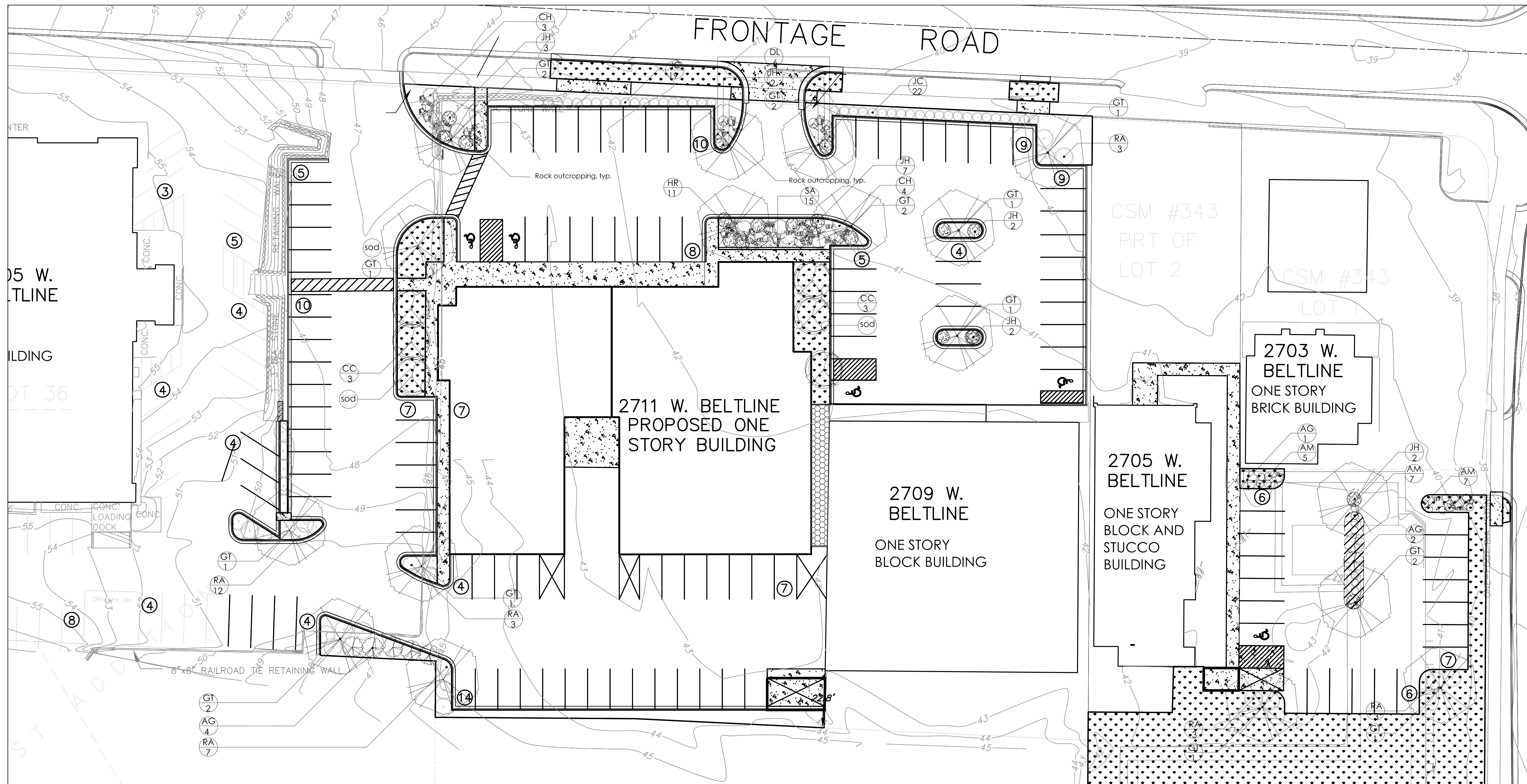
2711 WEST BELTLINE FRONTAGE ROAD  
MADISON, WISCONSIN

Drawing Title:  
EXTERIOR ELEVATIONS

PII Project Number:  
2007.01.00  
Drawn By:  
CMG

Drawing No.  
A201

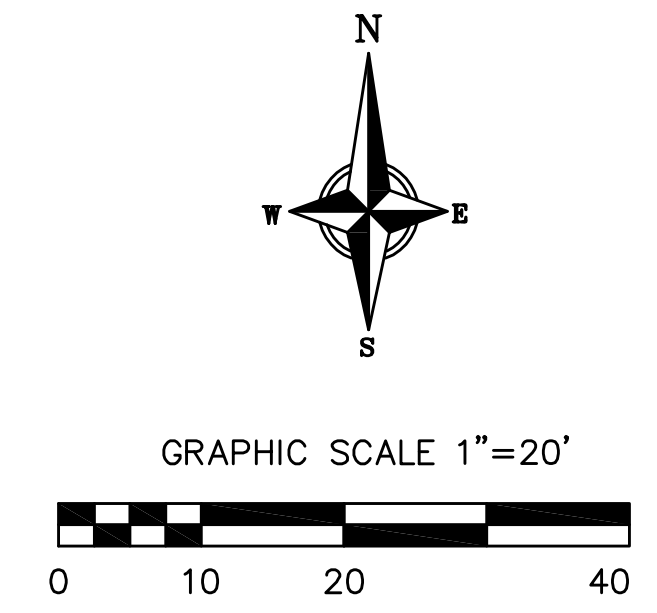
16. Jan. 2007 - 11:39a G:\DATA\COMM\DEV\MIG\32066037 Verlo-Allen Design Center\Task 1 Concept Planning\landscape Design - Site Planning\landscape\_plan.dwg b92009.yip@verlo.com



key	botanical name	common name	planting size	mature size	quantity
<b>shade trees</b>					
GT	<i>Gleditsia triacanthos</i> 'Imperial'	Honeylocust	2 1/2" cal. B&B	30-35' x 30-35'	17
<b>ornamental trees</b>					
CC	<i>Crataegus crus-galli</i> var. <i>inermis</i>	Thornless Hawthorn	2" cal. B&B	15-20' x 15-20'	6
<b>evergreen shrubs</b>					
JC	<i>Juniperus chinensis</i> 'Hetzi Columnaris'	Hetz Columnar Juniper	#7 cont.	15' x 4'	41
JH	<i>Juniperus horizontalis</i> 'Blue Chip'	Blue Chip Juniper	#3 cont.	10' x 6'	18
<b>deciduous shrubs</b>					
AG	<i>Acer ginnala</i> 'Compactum'	Compact Amur Maple	36' / #7 cont.	6-10' x 8-10'	7
AM	<i>Aronia melanocarpa</i> 'Autumn Magic'	Black Chokeberry	24' / #5 cont.	3' x 3'	19
CH	<i>Cotoneaster horizontalis</i>	Rockspray Cotoneaster	24' / #5 cont.	2-3' x 5-7'	7
DL	<i>Dierilla lonicera</i>	Dwarf Bush Honeysuckle	24' / #5 cont.	4' x 4'	6
RA	<i>Rhus aromatica</i> 'Gro-Low'	Gro-Low Fragrant Sumac	#5 cont.	24' x 6-8'	31
<b>perennials/ grasses</b>					
HR	<i>Hosta</i> 'Regal Splendor'	Regal Splendor Hosta	#3 cont.	36" x 34"	11
SA	<i>Sedum x</i> 'Autumn Fire'	Autumn Fire Sedum	#3 cont.	18" x 18"	15

ELEMENT	POINT VALUE	QUANTITY	POINTS ACHIEVED	CREDITS	
				QUANTITY	POINTS
Canopy Tree: 2"-2 1/2"	35	8	280		
Deciduous Shrub	2	70	140		
Evergreen Shrub	3	59	177		
Decorative Wall or Fence (per 10 L.F.)	5		0		
Earth Berm (per 10 L.F.)			0		
Avg. Height 30"	5		0		
Avg. Height 15"	2		0		
Evergreen Trees	15		0		
3' height minimum			0		
Canopy Tree or Small Tree 1 1/2"-2" Caliper (i.e. Crab, Hawthorn)	15	6	90		
<b>Sub Totals</b>			<b>687</b>	<b>+</b>	<b>0</b>
					<b>= 687</b>

Total # of Stalls:	115
Number of Canopy Shade Trees Required:	9
Number of Landscape Points Required:	515



**VERBICHER ASSOCIATES**  
 Committed to Quality Service Since 1976  
 999 Fourth Street, Suite 200, Madison, WI 53717  
 Phone: (608) 826-0532 Fax: (608) 826-0530

**LANDSCAPE PLAN**  
 Verlo/ Allen Design Center  
 Madison, WI

REVISIONS	NO.	DATE	REMARKS

SCALE: AS SHOWN  
 DATE: 2007  
 DRAFTER: SSNY/DFM  
 CHECKED: DFM  
 PROJECT NO.: 032066037.00  
 SHEET: 1 OF 01  
 DWG. NO.: L-1