

# ENTERPRISE RENT-A-CAR NEW FACILITY

MADISON, WISCONSIN

ARCHITECTURAL  
COMPUTER  
SERVICES

## ARCHITECTURAL COMPUTER SERVICES

2532 BIGLER CIRCLE

VERONA, WISCONSIN 53593

TEL: (608) 848-3578

Fax: (608) 848-7913

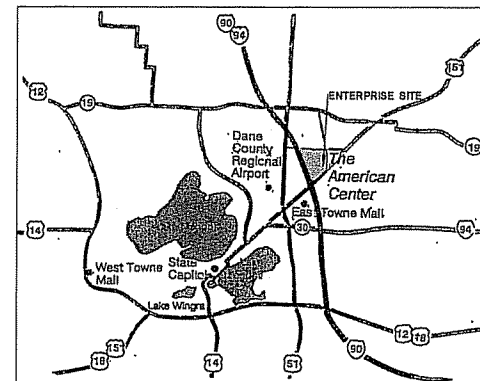
### DRAWING INDEX

#### GENERAL

CD100 COVER DRAWING

#### ARCHITECTURAL

C101 SITE PLAN  
C102 GRADING/EROSION CONTROL  
PLAN  
L101 LANDSCAPE PLAN  
ES1.0 SITE LIGHTING LAYOUT  
ES1.1 SITE LIGHTING FOOT CANDLES  
ES1.2 SITE LIGHTING FOOT CANDLES  
ES1.3 SITE LIGHTING FOOT CANDLES  
  
A1.1 FLOOR PLAN  
A2.1 ELEVATIONS  
A3.1 BUILDING SECTION  
A4.1 SIGNAGE DETAILS  
A5.1 SITE PICTURES



1 LOCATION PLAN  
NO SCALE



12.01.05 CITY OF MADISON CONDITIONAL USE  
AND USE AND DEVELOPMENT  
APPLICATION REVISIONS  
11.15.05 USE AND DEVELOPMENT APPLICATION

ENTERPRISE RENT-A-CAR  
2 EAST PARK COURT  
Madison, Wisconsin

COVER DRAWING

PROJECT NUMBER: 2005.02  
ISSUED: 12.01.05  
DRAWN BY: dje  
CHECKED BY: ---  
FILENAME: cover.dwg

CD100

**ARCHITECTURAL  
COMPUTER  
SERVICES**

**GENERAL NOTES**

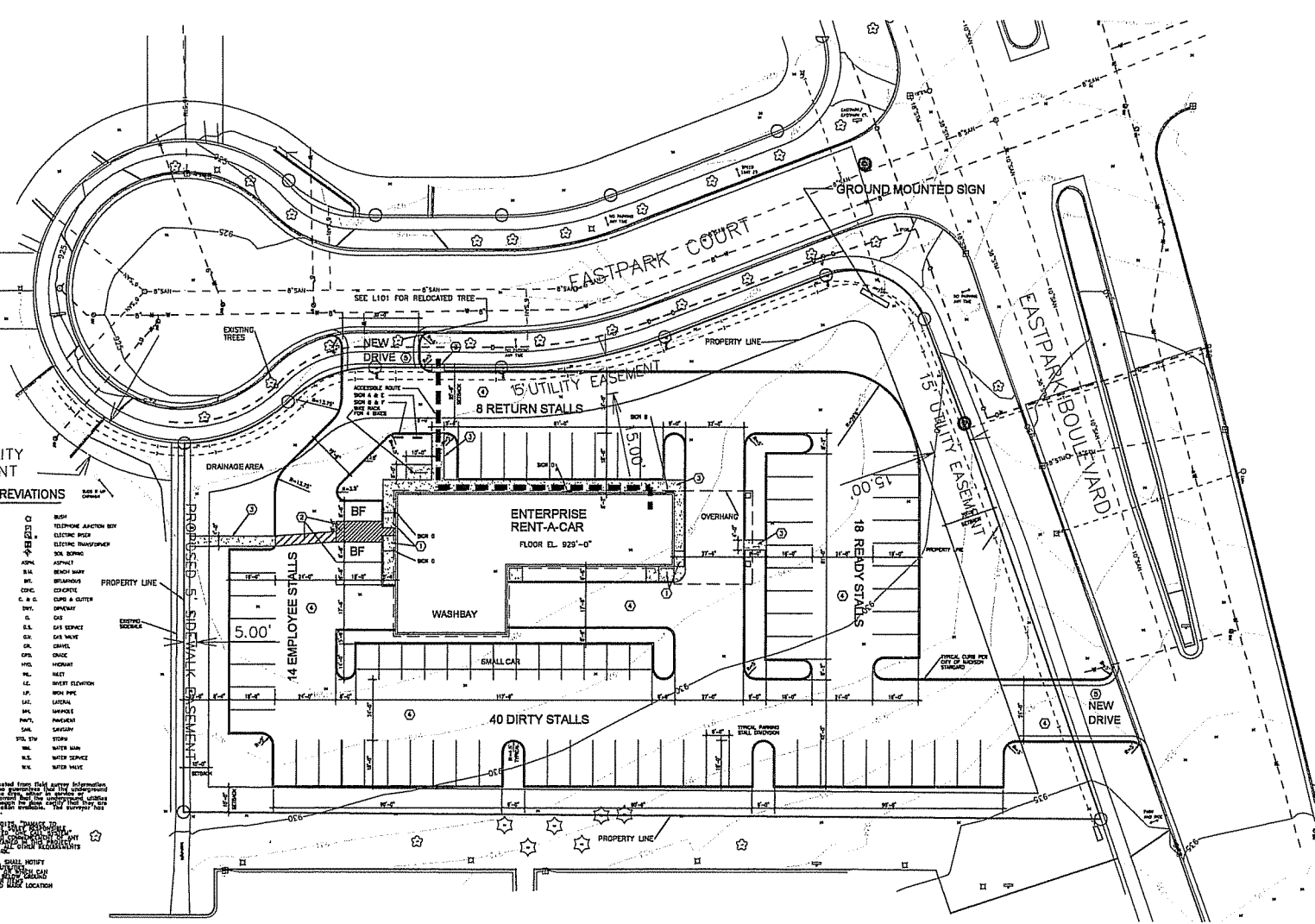
1. AMERICAN CENTER LOT 20  
60,584 SQ. FT., 1.39 AC.  
ZONING DISTRICT C2
2. BUILDING SQ. FT. 4,378 GROSS SQ. FT.  
NO. OF EMPLOYEES 13  
MAX. NO. OF OCCUPANCE 20  
BLDG SQ. FT. MINUS WASHBAY = 3450 SF  
NO. OF PARKING SPACES REQUIRED 12  
NO. OF PARKING SPACES PROVIDED 14,  
ALL OTHER SPACES ARE FOR  
RENTAL CARS.  
TOTAL PARKING SPACES PROVIDED 80
3. FOR SIGNAGE DETAILS SEE SHEET A4.1
4. FOR LANDSCAPING SEE SHEET L10
5. FOR GRADING PLANS SEE SHEET C102
6. FOR LIGHTING PLAN SEE SHEET E31.0  
AND E31.1

**ENTERPRISE RENT-A-CAR**  
2 EAST PARK COURT  
MADISON, WISCONSIN

**SITE PLAN**

PROJECT NUMBER: 2005-02  
ISSUED: 12.01.05  
DRAWN BY: DJE  
CHECKED BY: ---  
FILENAME: 2005-02SITE.DWG

**C101**



**1 SITE PLAN**  
1" = 20'-0"

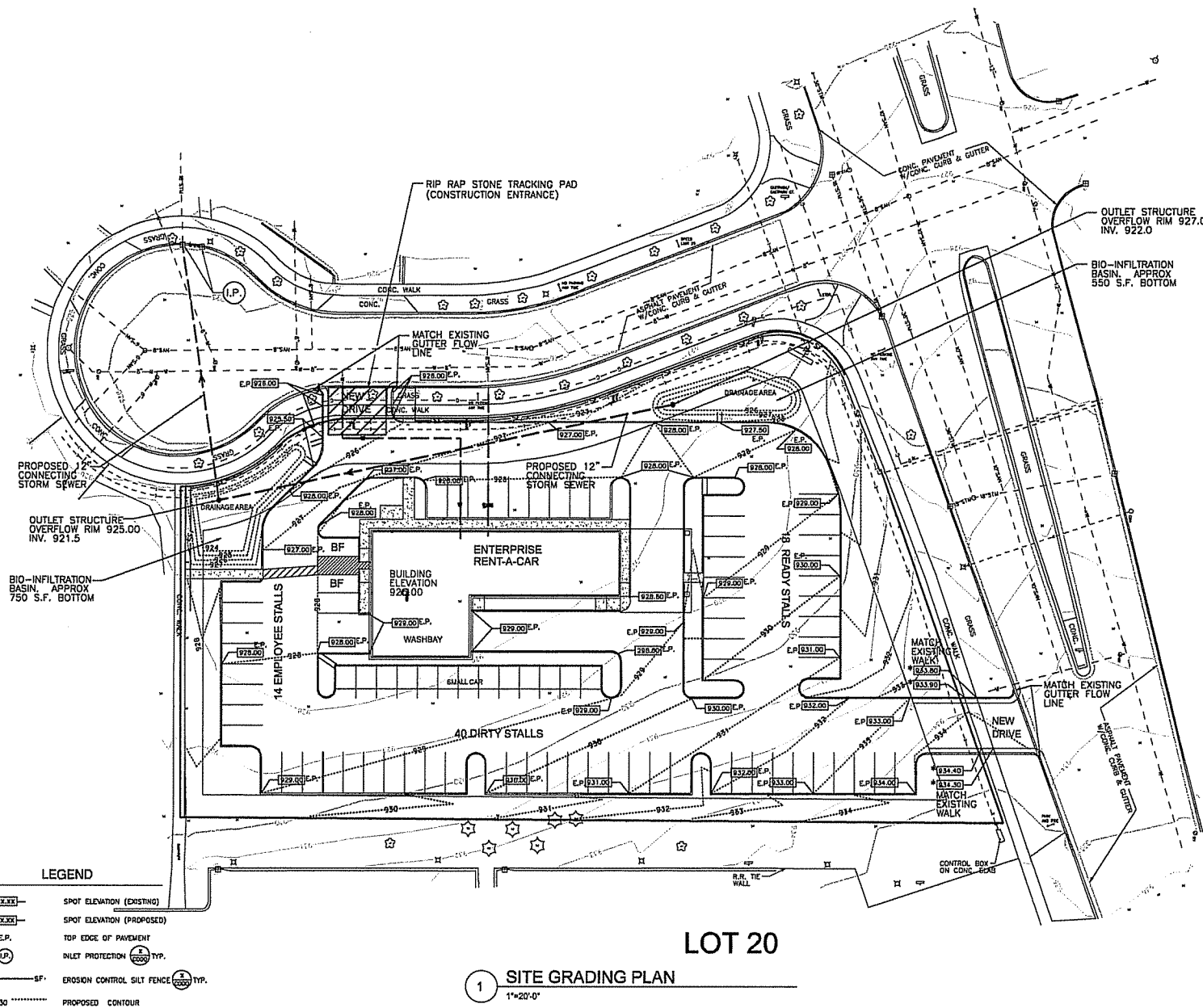
**SPECIFIC NOTES**

- ① 8" RAMP DOWN
- ② PAINTED STRIPING
- ③ 4" DEEP CONCRETE SIDEWALK
- ④ ASPHALTIC PAVING TYPICAL
- ⑤ CONCRETE PAVING TYPICAL

**LEGEND AND ABBREVIATIONS**

---	PROPERTY LINE	⊙	BUSH
---	EXISTING #7W LINE	⊙	TELEPHONE JACKBOX BOX
---	OVERHEAD	⊙	ELECTRIC BOX
---	CLEAN OUT	⊙	ELECTRIC TRANSFORMER
---	EXISTING UTILITY	⊙	BOX BORING
---	EXISTING ALLEY	⊙	APPROX
---	PROMISED ALLEY	⊙	BENCH MARK
---	WATER MAIN	⊙	BEHOLDING
---	GAS MAIN	⊙	CONCRETE
---	WATER SERVICE MAIN	⊙	CURB & GUTTER
---	GAS SERVICE MAIN	⊙	DRIVEWAY
---	EXISTING FENCE	⊙	GRASS
---	POWER POLE	⊙	GAS SERVICE
---	TELEPHONE/TELEGRAPH POLE	⊙	GAS MAIN
---	LIGHT POLE	⊙	SEWER
---	EXISTING SIGN	⊙	SEWER
---	TOP OF BANK	⊙	SEWER ELEVATION
---	VOID POINT	⊙	IRON PIPE
---	TREE LOCATION LINE	⊙	GRASS
---	RECORDING TREE (102)	⊙	WAPSOLE
---	EXISTING CURB	⊙	PAVEMENT
---	MONITORING WELL	⊙	SEWER
---	TELEPHONE CO. MANHOLE	⊙	STOP
---	ELECTRIC CO. MANHOLE	⊙	WATER MAIN
---	SERVICE POLE	⊙	WATER SERVICE
---	GAS MAIN	⊙	WATER MAIN

The underground utilities shown have been located from field survey information and are shown as approximate locations. It is the responsibility of the contractor to verify the location and depth of all utilities before construction. The contractor shall be responsible for any damage to existing utilities. The contractor shall be responsible for any damage to existing utilities. The contractor shall be responsible for any damage to existing utilities.



**ENTERPRISE RENT-A-CAR**  
2 EAST PARK COURT  
MADISON, WISCONSIN

**GRADING AND  
EROSION CONTROL  
PLAN**

PROJECT NUMBER: 2005-02  
ISSUED: 12.08.05  
DRAWN BY: MFG  
CHECKED BY: MDL  
FILENAME: C\_00\_GRAD\_EC\_STW.DGN

**C102**

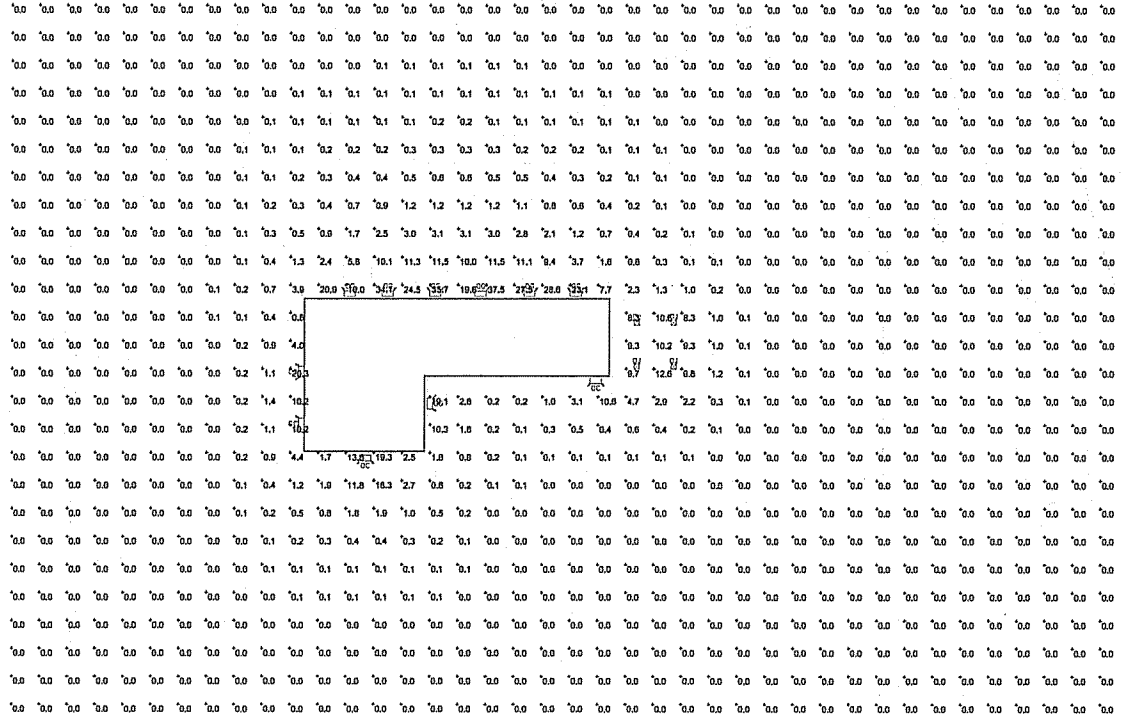
**LEGEND**

- [922.00] SPOT ELEVATION (EXISTING)
- [922.00] SPOT ELEVATION (PROPOSED)
- E.P. TOP EDGE OF PAVEMENT
- (IP) DILET PROTECTION (TYP.)
- SF — EROSION CONTROL SILT FENCE (TYP.)
- ..... 9.30 ..... PROPOSED CONTOUR

**1 SITE GRADING PLAN**  
1"=20'-0"

**LOT 20**





-SITE CALCULATIONS ARE TAKEN WITH JUST THE BUILDING WALL PACKS ON.  
 -OVERALL AVG. SITE CALCS ARE 1.0Fc.  
 -MAX. SITE FC'S ARE 37.5Fc.



TOWN & COUNTRY ELECTRIC  
 200 Wisconsin Road, Suite 100  
 Sun Prairie, WI 53590  
 (608) 842-2225 Fax  
 www.towncountryelectric.com

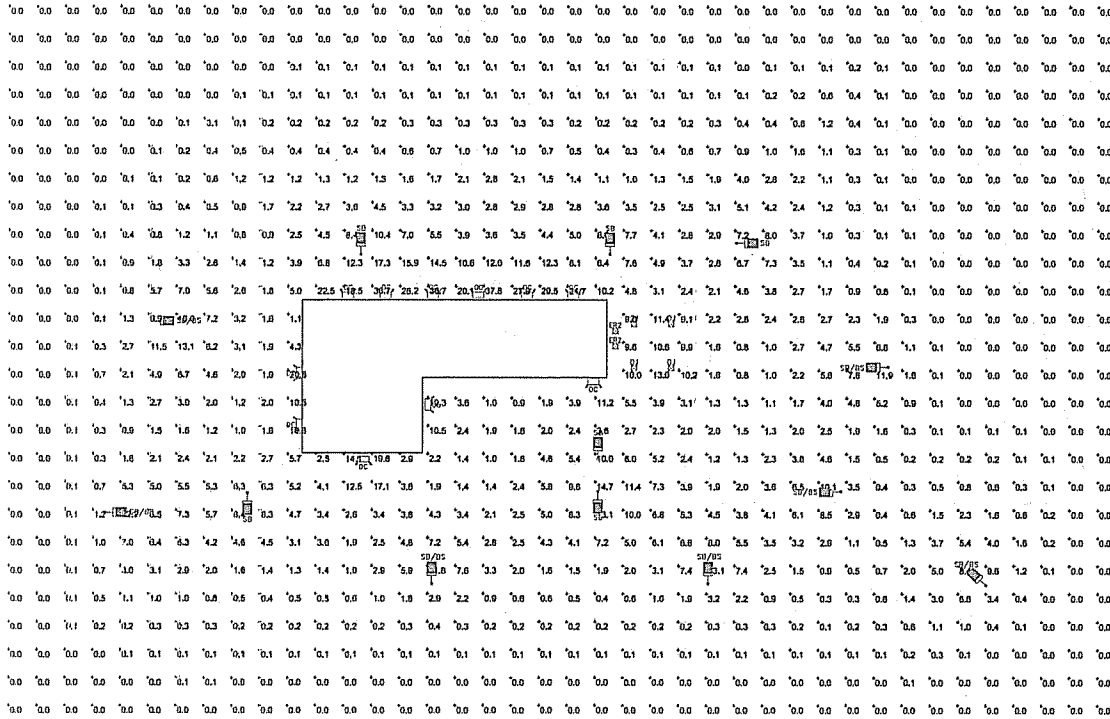
ENTERPRISE RENT-A-CAR  
 MADISON, WI  
 SITE PLAN  
 SITE LIGHTING - WALL PACKS ONLY

THIS DRAWING IS THE EXCLUSIVE PROPERTY OF TOWN & COUNTRY ELECTRIC. NO REPRODUCTION OR IMITATION OF THIS DRAWING, IN WHOLE OR PART, MAY BE MADE WITHOUT THE WRITTEN PERMISSION OF TOWN & COUNTRY ELECTRIC.

DATE		REV		REVISIONS	

DESIGN BY	CHK	DATE	SCALE	SUPERVISOR	APPROVED BY
			1" = 30'-0"		
DRAWN BY					





-SITE CALCULATIONS ARE TAKEN WITH ALL FIXTURES TURNED ON.  
 -OVERALL AVG. SITE CALCS ARE 3.1fc.  
 -MAX. SITE FC'S ARE 38.1fc.

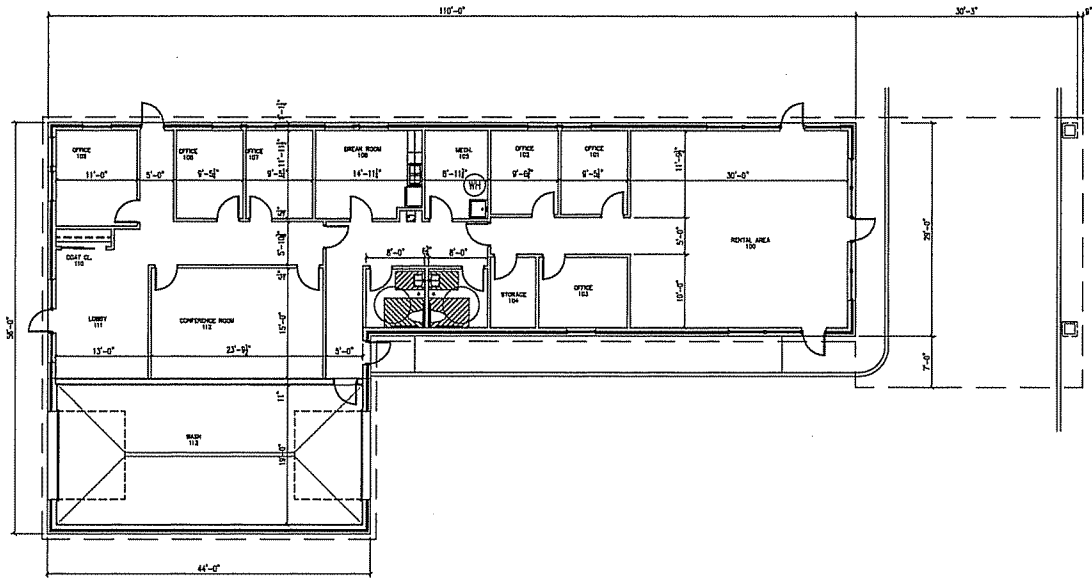
**TOWN & COUNTRY**  
 COMMERCIAL LIGHTING  
 Field Technicians  
 200 Wilshire Bank, Suite 10  
 Kenilworth, WI 53150  
 (414) 437-1215  
 (414) 437-2225 fax  
 www.town-country.com

ENTERPRISE RENT-A-CAR  
 MADISON, WI  
 SITE PLAN  
 SITE LIGHTING - ALL FIXTURES REPRESENTED

NOT DRAWN TO SCALE. THIS PLAN IS FOR INFORMATION ONLY. ANY CHANGES TO THE ORIGINAL PLAN MUST BE APPROVED BY THE ORIGINAL DESIGNER. NO USE, REPRODUCTION, OR PUBLICATION OF THIS DRAWING, IN WHOLE OR PART, MAY BE MADE WITHOUT THE WRITTEN PERMISSION OF THE ENGINEER.

DATE:	NO.:	REVISIONS:
DRAWN BY:	CHKD BY:	INR
APPROVED BY:	DATE:	11-11-05
FIELD TECH:	SCALE:	1" = 30'-0"
SUPPRESSED BY:		
JOB NO: DYC0610-XX		
SHEET		
ES1.3		

**ARCHITECTURAL  
COMPUTER  
SERVICES**



AREAS:  
FLOOR AREA = 4378 SF  
CANOPY AREA = 1140 SF



**1 FLOOR PLAN**  
1/8" = 1'-0"

**ENTERPRISE RENT-A-CAR**  
2 EAST PARK COURT  
Madison, Wisconsin

**FLOOR PLAN**

PROJECT NUMBER:	2005.02
ISSUED:	12.01.05
DRAWN BY:	dje
CHECKED BY:	---
FILENAME:	0502fp.DWG

**A1.1**



**ARCHITECTURAL  
COMPUTER  
SERVICES**

**SPECIFIC NOTES**

- ① BUILDING SIGN: 3'-0"X17'-6" = 61.25 SQ. FT.  
AMERICAN CENTER REQUIREMENTS:  
 FASCIA HT = 3'-0" THERMOBREAK MAX SIGN HT = 3'-0"  
 AREA OF BLDG FACADE=616 SF, THEREFORE MAX=616 SF  
 CITY OF MADISON REQUIREMENTS:  
 FASCIA HT = 3'-0" THERMOBREAK MAX SIGN HT = 3'-0"  
 FASCIA AREA=250 SF, THERMOBREAK MAX=150 SF  
 LETTER SIZE = 17.5" MAX TOWER LETTER HT = 18"
- ② BUILDING SIGN: 3'-0"X17'-6" = 61.25 SQ. FT.  
AMERICAN CENTER REQUIREMENTS:  
 FASCIA HT = 3'-0" THERMOBREAK MAX SIGN HT = 3'-0"  
 AREA OF BLDG FACADE=1163 SF, THEREFORE MAX=1163 SF  
 CITY OF MADISON REQUIREMENTS:  
 FASCIA HT = 3'-0" THERMOBREAK MAX SIGN HT = 3'-0"  
 FASCIA AREA=603 SF, THEREFORE MAX=240 SF  
 LETTER SIZE = 17.5"

**GENERAL NOTES**

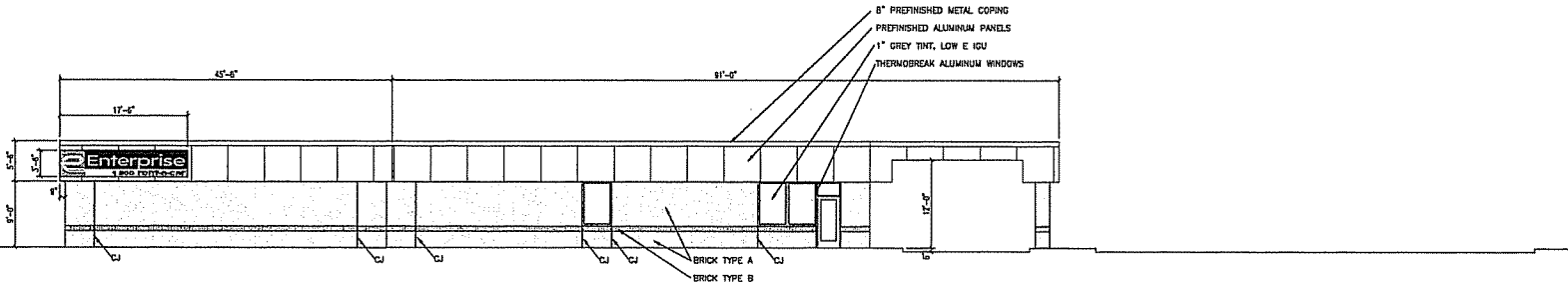
- BRICK TYPE A: GLEN-CERY SANDGATE
- BRICK TYPE B: GLEN-CERY COLONIAL SERIES RED HORIZON COURSE

**ENTERPRISE RENT-A-CAR**  
**2 EAST PARK COURT**  
 Madison, Wisconsin

**ELEVATIONS**

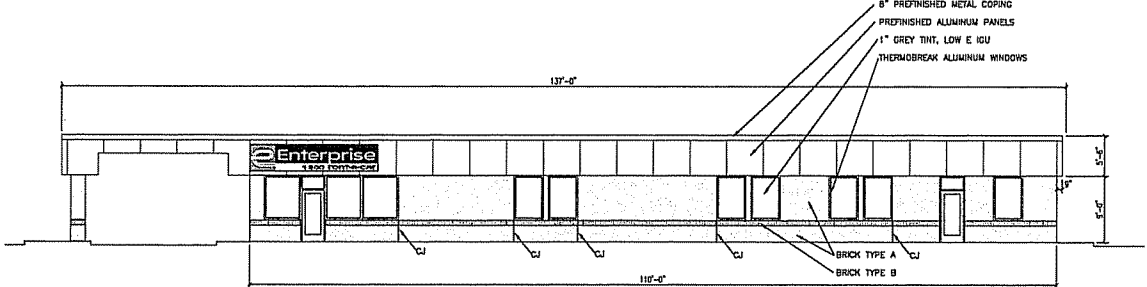
PROJECT NUMBER:	2005.02
ISSUED:	12.01.05
DRAWN BY:	DJE
CHECKED BY:	---
FILENAME:	.DWG

**A2.1**



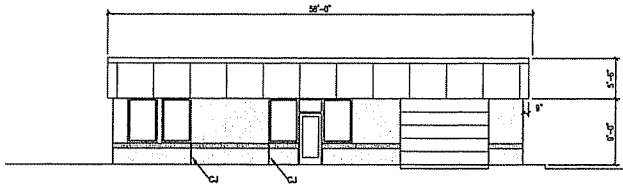
**1 EAST ELEVATION**

1/8" = 1'-0"



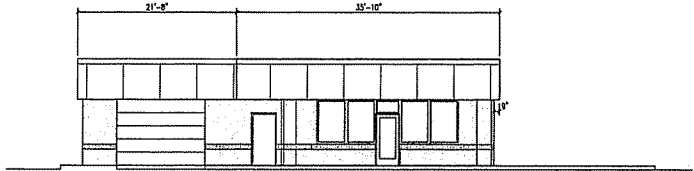
**2 WEST ELEVATION**

1/8" = 1'-0"



**3 SOUTH ELEVATION**

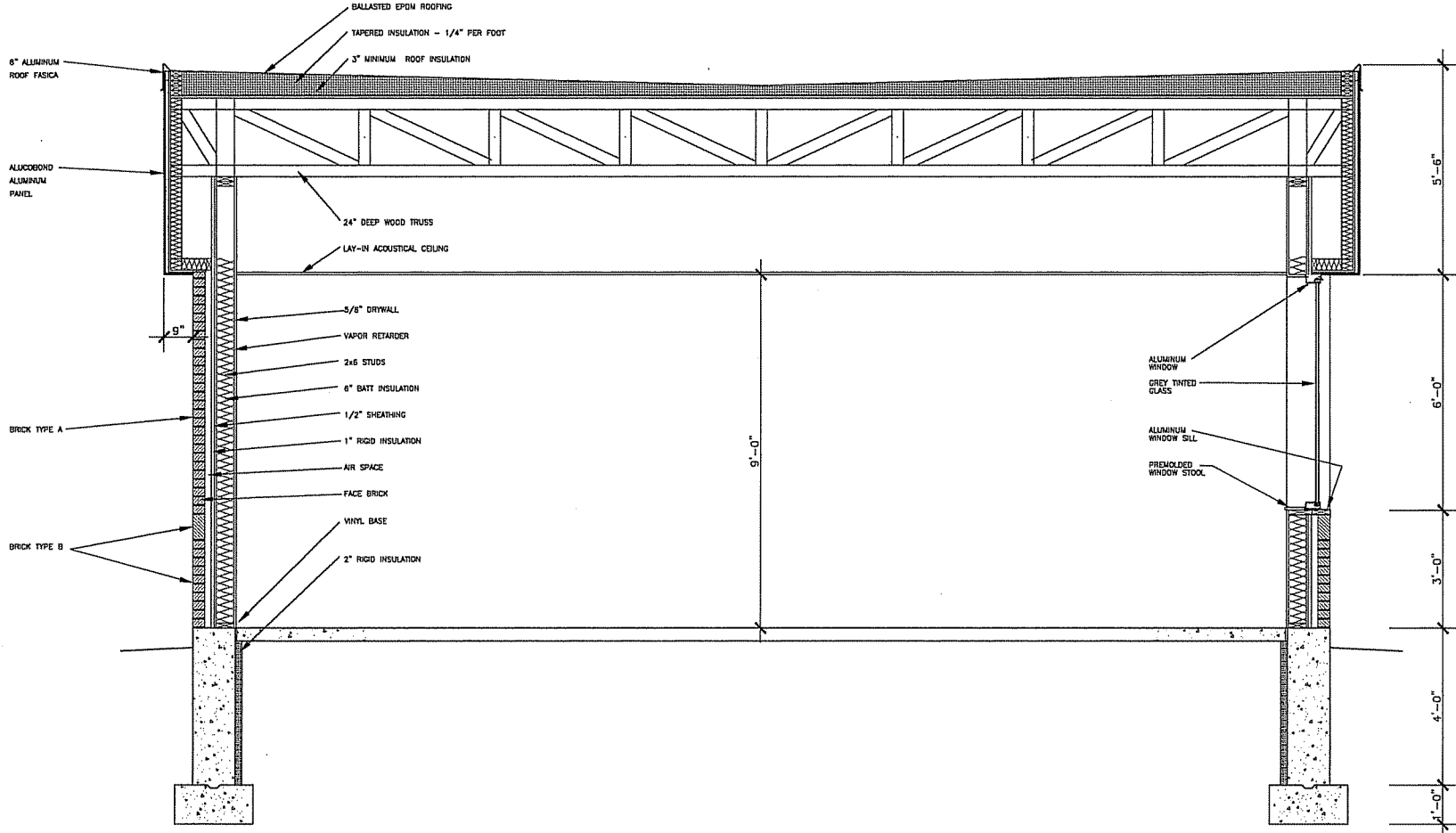
1/8" = 1'-0"



**4 NORTH ELEVATION**

1/8" = 1'-0"

**ARCHITECTURAL  
COMPUTER  
SERVICES**



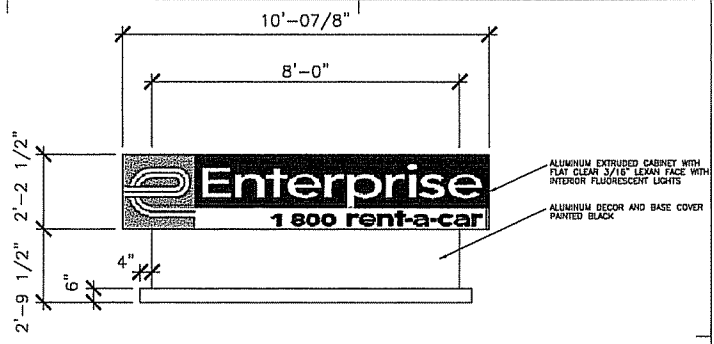
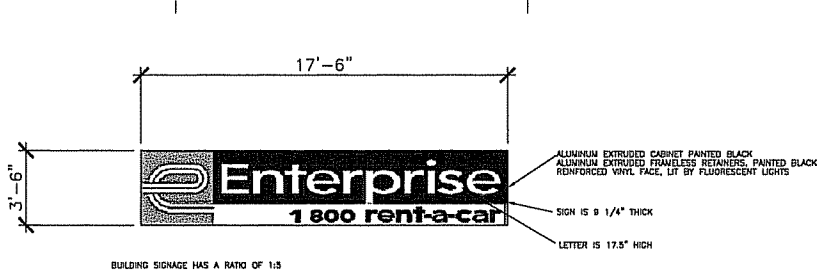
**1 BUILDING SECTION**  
3/4" = 1'-0"

**ENTERPRISE RENT-A-CAR**  
2 EAST PARK COURT  
Madison, Wisconsin

**BUILDING SECTION**

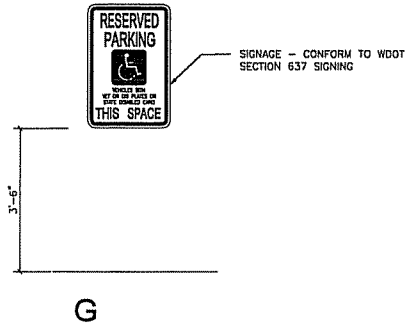
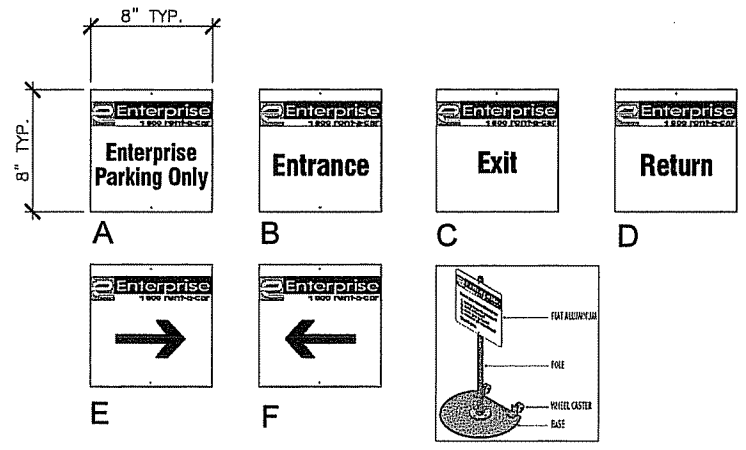
PROJECT NUMBER:	2005-02
ISSUED:	12.01.05
DRAWN BY:	DJE
CHECKED BY:	---
FILENAME:	.DWG

**A3.1**



**1 BUILDING SIGN ELEVATION**  
SIGNAGE ELEVATIONS

**2 MONUMENTAL SIGN ELEVATION**  
SIGNAGE ELEVATIONS



**3 VEHICULAR AND PEDESTRIAN SIGN ELEVATIONS**  
SIGNAGE ELEVATIONS

**ENTERPRISE RENT-A-CAR**  
2 EAST PARK COURT  
Madison, Wisconsin

**SIGNAGE DETAILS**

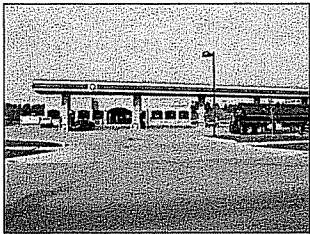
PROJECT NUMBER:	2005-02
ISSUED:	12.01.05
DRAWN BY:	DJE
CHECKED BY:	---
FILENAME:	.DWG

**A4.1**

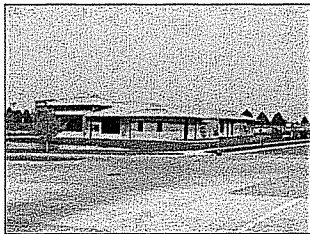
**ARCHITECTURAL  
COMPUTER  
SERVICES**



3



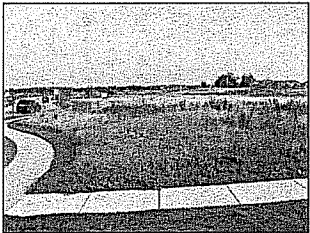
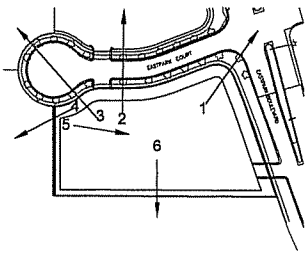
2



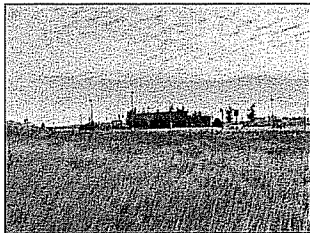
1



4



5



6

**ENTERPRISE RENT-A-CAR**  
2 EAST PARK COURT  
Madison, Wisconsin

**SITE PICTURES**

PROJECT NUMBER:	2005-02
ISSUED:	12.01.05
DRAWN BY:	DJE
CHECKED BY:	---
FILENAME:	.DWG



1 VIEW AROUND SITE  
NO SCALE

**A5.1**