



eppstein uhen : architects

milwaukee 445 East Chicago Street
Milwaukee, Wisconsin 5322
tel 414 271 6370 fax 414 271 7744
madison 222 West Washington Ave, 6th Fl
Madison, Wisconsin 53703
tel 608 442 6300 fax 608 442 6300

PROJECT
**GOODMAN ATWOOD
COMMUNITY CENTER
GYMNASIUM**

149 WAUBESA STREET
MADISON, WI



ISSUANCE AND REVISIONS

DATE	DESCRIPTION

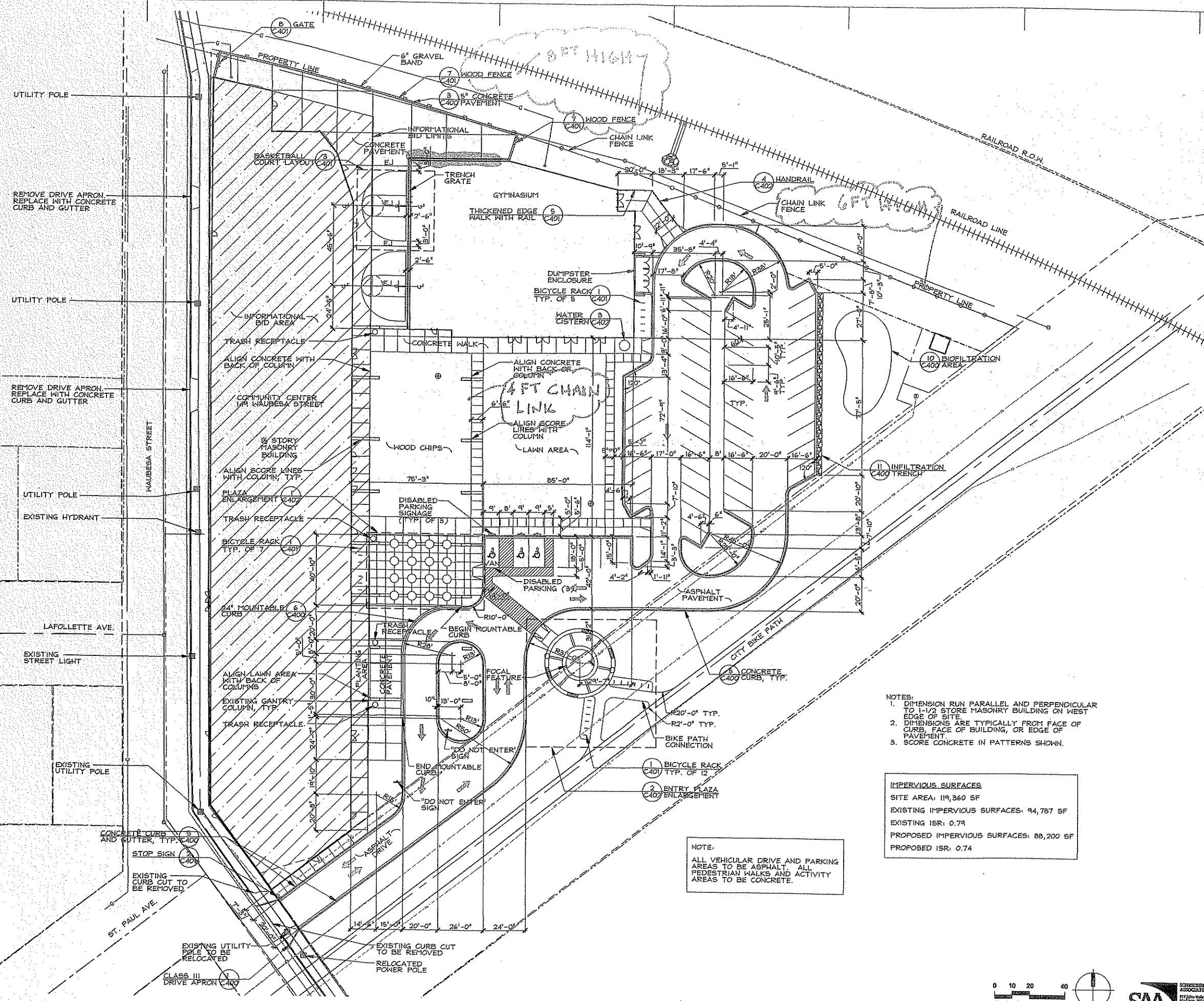
**BUILDING & SITE
BID PACKAGE
KEY PLAN**

SHEET TITLE
SITE LAYOUT PLAN

PROJECT MANAGER CG
PROJECT NUMBER 306372-01
DATE AUGUST 9, 2007
SHEET NUMBER

SCOTTSON / ANDERSON
ASSOCIATES, INC.
277 Elm Street
Madison, WI 53703
TEL 608 263 1111
WWW.SCOTTSON-ANDERSON.COM

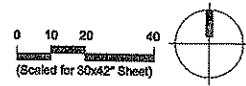
C200



NOTES:
 1. DIMENSION RUN PARALLEL AND PERPENDICULAR TO 1-1/2 STORE MASONRY BUILDING ON WEST EDGE OF SITE.
 2. DIMENSIONS ARE TYPICALLY FROM FACE OF CURB, FACE OF BUILDING, OR EDGE OF PAVEMENT.
 3. SCORE CONCRETE IN PATTERNS SHOWN.

IMPERVIOUS SURFACES
 SITE AREA: 119,360 SF
 EXISTING IMPERVIOUS SURFACES: 94,767 SF
 EXISTING ISR: 0.79
 PROPOSED IMPERVIOUS SURFACES: 88,200 SF
 PROPOSED ISR: 0.74

NOTE:
 ALL VEHICULAR DRIVE AND PARKING AREAS TO BE ASPHALT. ALL PEDESTRIAN WALKS AND ACTIVITY AREAS TO BE CONCRETE.



REMOVE DRIVE APRON. REPLACE WITH CONCRETE CURB AND GUTTER

REMOVE DRIVE APRON. REPLACE WITH CONCRETE CURB AND GUTTER

REMOVE DRIVE APRON. REPLACE WITH CONCRETE CURB AND GUTTER

UTILITY POLE
EXISTING HYDRANT

LAFOLLETTE AVE.
EXISTING STREET LIGHT

EXISTING UTILITY POLE

CONCRETE CURB AND GUTTER, TYP. C400
STOP SIGN C400

EXISTING CURB CUT TO BE REMOVED

EXISTING UTILITY POLE TO BE RELOCATED
CLASS III DRIVE APRON C400

EXISTING CURB CUT TO BE REMOVED
RELOCATED POWER POLE

File: P:\Projects\12012012\12012012\12012012.dwg User: pphawkins Date: 08/09/07 10:49:01 AM