



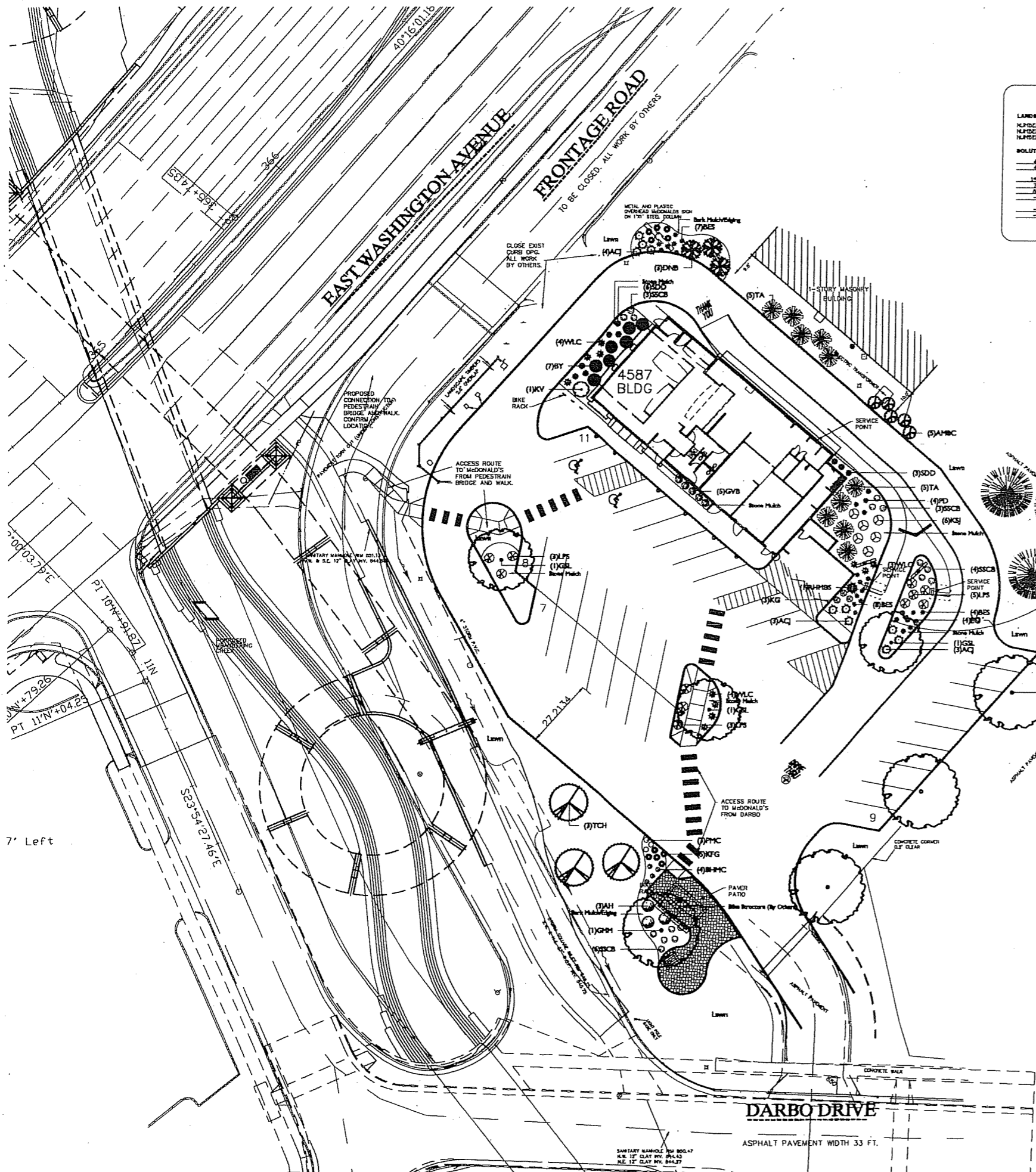
**CITY OF MADISON**

**LANDSCAPE POINTS REQUIREMENTS**

NUMBER OF PARKING STALLS	26
NUMBER OF 2" DIA. GAL. TREES REQUIRED	3
NUMBER OF LANDSCAPE POINTS REQUIRED	173.7

**SOLUTION**

4	GANOY TREES (2" x 2 1/2") @ 30 PTS.	140
1	(1 1/2" x 2") @ 15 PTS.	60
15	DECIDUOUS SHRUBS @ 2 PTS.	30
7	EVERGREEN SHRUBS @ 3 PTS.	21
2	EVERGREEN TREES (3" DIA.) @ 15 PTS.	30
1	DECORATIVE WALL OR FENCE @ 5 PTS. (UP TO 10 LF.)	5
1	EARTH REIN. (PER ID LF.)	1
1	AVERAGE HEIGHT @ 30' @ 2 PTS.	2
1	AVERAGE HEIGHT @ 15' @ 2 PTS.	2
<b>TOTAL POINTS</b>		<b>173.7</b>



**Plant Material List**

Broadleaf Deciduous			
Quantity	Code Name	Common Name	Planting Size
1	GMM	Green Mountain Sugar Maple	2 1/2" B&B
3	GSL	Greenspire Littleleaf Linden	2 1/2" B&B
3	RSM	Red Sunset Red Maple	2 1/2" B&B
3	TCH	Thinia Cockspur Hawthorn	6" B&B
Conifer Evergreen			
Quantity	Code Name	Scientific Name	Planting Size
10	ACJ	Andorra Compact Juniper	#3 CONT.
7	BY	Berryhill Yew	18" B&B
3	BHS	Black Hills Spruce	6" B&B
1	RHMB	Montgomery Blue Spruce	3" B&B
10	TA	Tachy/mission Arborvitae	6" B&B
Perennial			
Quantity	Code Name	Scientific Name	Planting Size
4	BHMC	Big Sky Harvest Moon Coneflower	#1 CONT.
19	BES	Black-eyed Susan	#1 CONT.
10	KFG	Karl Foerster's Feather Reed Grass	#1 CONT.
3	KG	Kobold Gayfeather	#1 CONT.
3	PMC	Pride Meadowbrite Coneflower	#1 CONT.
8	PD	Prairie Dropseed	#2 CONT.
9	SDD	Stella De Oro Daylily (gold 18" Ra)	#1 CONT.
16	SSCB	Stormy Seas Coral Bells	#1 CONT.
11	WLC	Whisker's Low Catmint	#1 CONT.
Shrub			
Quantity	Code Name	Scientific Name	Planting Size
3	AH	Annabelle Hydrangea	#5 CONT.
5	AMBC	Autumn Magic Black Chokeberry	#5 CONT.
3	DNB	Diabolo Ninebark	6" B&B
5	GVB	Green Velvet Boxwood	#3 CONT.
6	KSJ	Kalm St. Johnswort	#3 CONT.
1	KV	Koreanspice Viburnum	24" B&B
11	LPS	Little Princess Spiraea	#3 CONT.

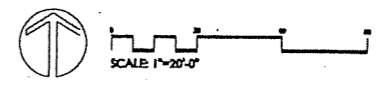
**GENERAL NOTES**

- A) Areas labeled "Bark Mulch" to receive a mixture of hardwood shredded bark mulch spread to a 3" depth over pre-emergent.
- B) Individual trees (and shrub groupings) found along perimeter of property as well as those found within lawn areas to receive bark rings (and bark beds) consisting of a mixture of hardwood shredded bark mulch spread to a minimum 3" depth (3' wide beds for shrub groupings).
- C) "Plastic Edging" to be Valley View Black Diamond Edging or equivalent.
- D) Areas labeled "Stone Mulch" to receive 1-1/2" washed gravel spread to a 3" depth over fabric weed barrier.
- E) Plant beds adjacent to building foundation to be mulched with 1-1/2" diameter washed gravel mulch spread to a 3"-4" depth over fabric weed barrier.

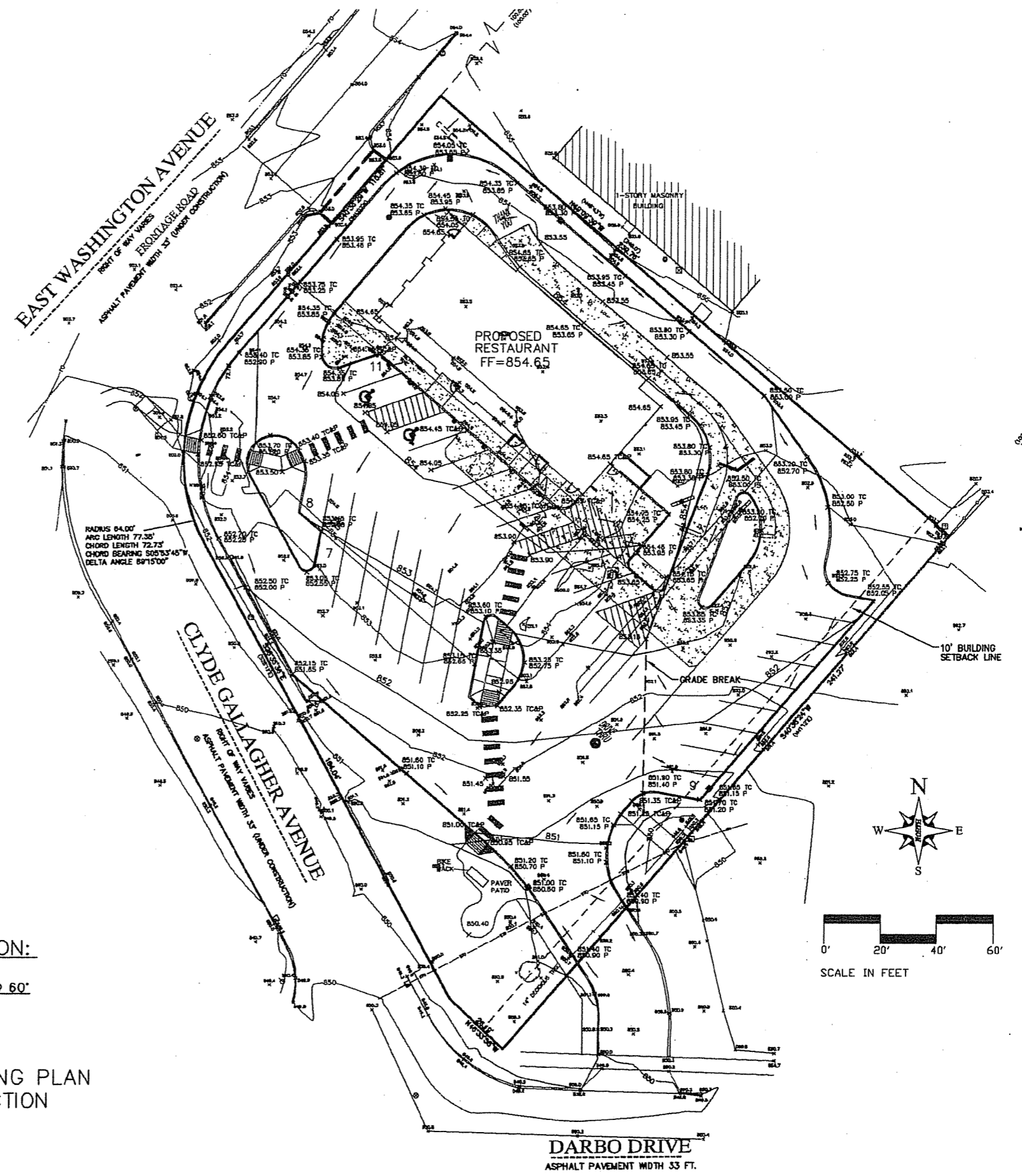
**MCDONALD'S RESTAURANT**  
 3051 EAST WASHINGTON AVENUE  
 MADISON, WISCONSIN

Checked By: DC  
 Drawn By: JD  
 Revised: 6/19/07 JD  
 Revised: 7/17/07 JD  
 Revised: 8/31/07 JD  
 Revised:  
 Revised:  
 Revised:

**L1**



P:\3070263\DWG\GP001D20.dwg, Layout1, 9/11/2007 10:05:16 AM, kjm

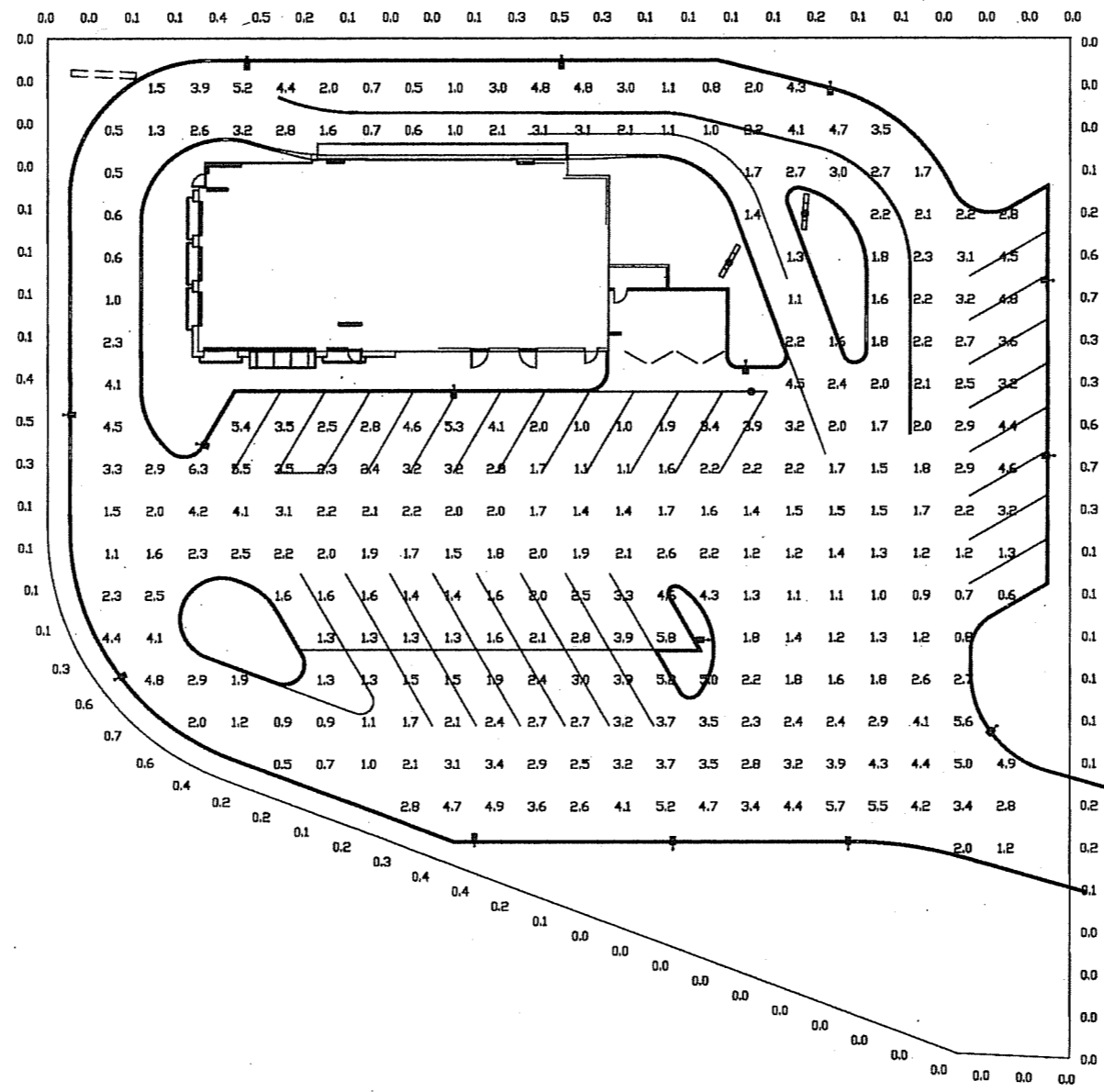


**PARKING INFORMATION:**  
 33 9'X18' SPACES @ 60'  
 2 9'X18' ACCESSIBLE SPACES @ 60'  
 35 TOTAL SPACES

CONCEPTUAL GRADING PLAN  
 NOT FOR CONSTRUCTION

THESE DRAWINGS AND SPECIFICATIONS ARE THE CONFIDENTIAL AND PROPRIETARY PROPERTY OF MCDONALD'S. NO PART OF THESE DRAWINGS OR SPECIFICATIONS ARE TO BE REPRODUCED, COPIED, OR TRANSMITTED IN ANY FORM OR BY ANY MEANS, ELECTRONIC OR MECHANICAL, INCLUDING PHOTOCOPYING, RECORDING, OR BY ANY INFORMATION STORAGE AND RETRIEVAL SYSTEM, WITHOUT THE WRITTEN PERMISSION OF MCDONALD'S. THESE DRAWINGS ARE NOT SUITABLE FOR USE ON A DIFFERENT SITE OR AT A LATER TIME. USE OF THESE DRAWINGS FOR ANY OTHER PROJECT WITHOUT THE WRITTEN PERMISSION OF MCDONALD'S IS STRICTLY PROHIBITED. REPRODUCTION OF THE CONTRACT DOCUMENTS FOR USE BY ANOTHER PARTY IS NOT AUTHORIZED.	
<b>McDONALDS USA, LLC.</b> OFFICE ADDRESS: 1650 V. BEND STREET #900 BLOOMINGTON, MINNESOTA 55431-9888 (612)-884-4355	
DRAWN BY: MDS PHOTO ISSUED:	REVISION HISTORY: REV: 1 DATE: 9-11-07 SITE GRADING REVISIONS
STATE: WISCONSIN COUNTY:	CERTIFICATION:
STREET ADDRESS: 3051 EAST WASHINGTON AVE. CITY:	NATIONAL NUMBER: 473
SITE NAME: PRELIMINARY GRADING PLAN NATIONAL NUMBER: 048-0026	DATE ISSUED: 7-17-07
<b>C3.1</b>	

- NOTES:
1. THE FOOTCANDLE LEVELS AS SHOWN ARE BASED ON THE FOLLOWING CRITERIA. ANY SUBSTITUTIONS IN SPECIFIED FIXTURES OR CHANGES TO LAYOUT WILL AFFECT LIGHTING LEVELS SHOWN AND WILL NOT BE THE RESPONSIBILITY OF SECURITY LIGHTING.
  2. THE CONTRIBUTION OF THE METAL HALIDE SOFFIT / BUILDING LIGHTING IS NOT REFLECTED ON THIS DRAWING.
  3. DISTANCE BETWEEN READINGS 10'
  4. FINAL ADJUSTMENTS TO AIMING ANGLE/DIRECTION OF FIXTURES MAY BE REQUIRED TO ELIMINATE LIGHT TRESPASS OR GLARE ONTO ADJOINING PROPERTIES OR ROADWAYS.
  5. FOOTCANDLE LEVELS SHOWN ARE MAINTAINED. MAINTENANCE FACTOR USED ON THIS DRAWING IS .75



PAVED SURFACE READINGS

Average	2.5
Maximum	6.3
Minimum	0.5
AvgMin	4.99
MaxMin	12.60

PROPERTY LINE READINGS @ 4' ABOVE GRADE

Average	0.2
Maximum	0.7
Minimum	0.0

■ ■ - SPECIFY COLOR NOTE: ALL POLES ARE DRILLED

FIXTURE TYPE	SYMBOL	QUANTITY	CONFIG	QUANTITY	MOUNTING HEIGHT	LUMENS	POLE TYPE	■	QUANTITY
RSB/RCS-175MH-IV-■-■-■-■	■	15	SGL	15	24'	16,600	SSP-22-■ (5')	■	15

■ POLES SPECIFIED ON THIS DRAWING ARE RATED FOR AN 80 MPH WIND LOAD. FOR AREAS WHERE THE WIND LOAD CRITERIA EXCEEDS 80 MPH, PLEASE CONSULT FACTORY FOR PROPER POLE SPECIFICATION AND MODEL NUMBER.

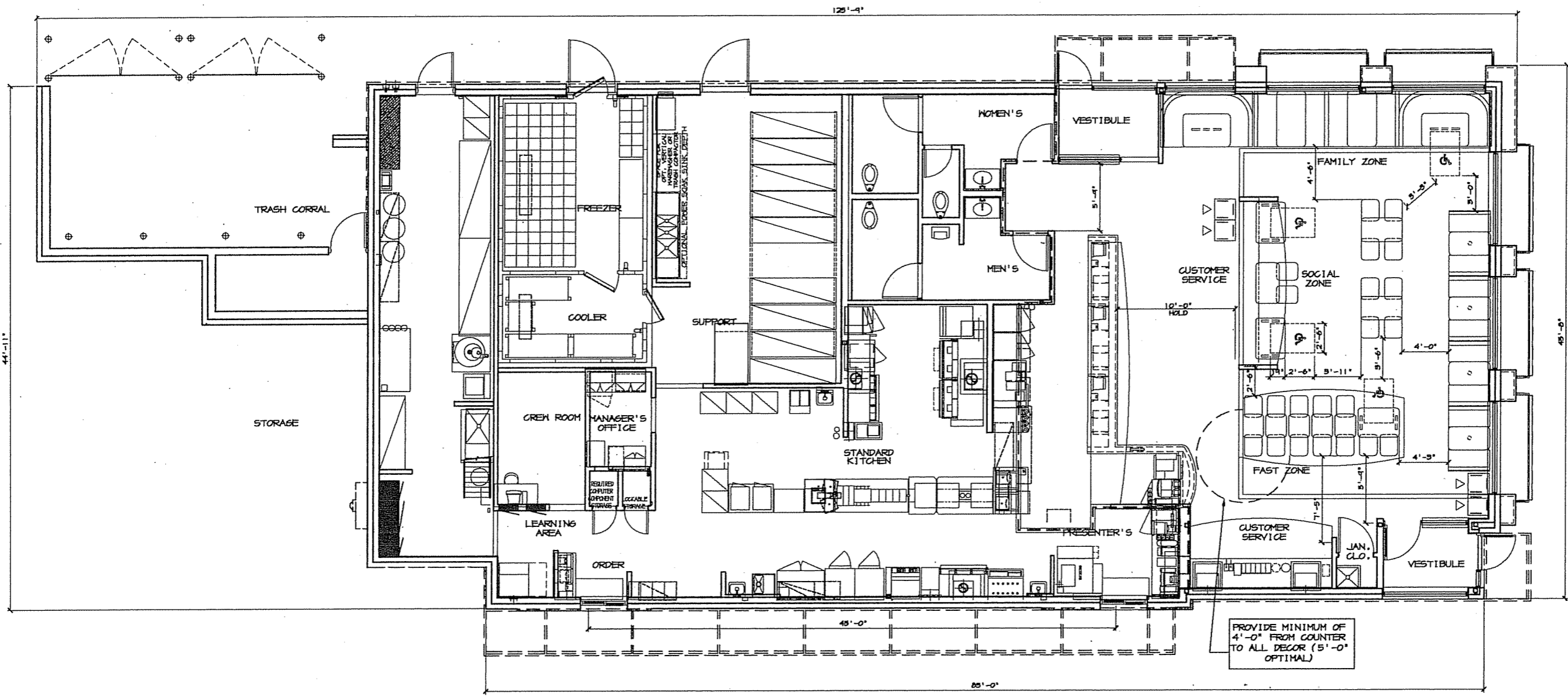
THIS LIGHTING PATTERN REPRESENTS ILLUMINATION LEVELS CALCULATED FROM LABORATORY DATA. TYPICAL UNIFORMITY CONDITIONS IN ACCORDANCE WITH ILLUMINATING ENGINEERING SOCIETY APPROVED METHODS. ACTUAL PERFORMANCE OF ANY MANUFACTURER'S LUMINAIRES MAY VARY DUE TO VARIATION IN ELECTRICAL VOLTAGE, TOLERANCE IN LAMP, AND OTHER VARIABLE FIELD CONDITIONS.

UNLESS OTHERWISE SPECIFIED, ALL DIMENSIONS ARE IN INCHES			
TOLERANCES NOT OTHERWISE SPECIFIED			
SECTION	SCALE	DATE	BY
DESIGNED BY	DATE	NEXT REVISION	BY
CHECKED BY	DATE		
APPROVED BY	DATE		
APPROVED BY	DATE		
SHOP ORDER	MATERIAL		
PROJECT NO.			



POINT-BY-POINT FOOTCANDLE PLOT FOR  
 - MCDONALD'S -  
 EAST WASHINGTON AVE  
 MADISON, WI

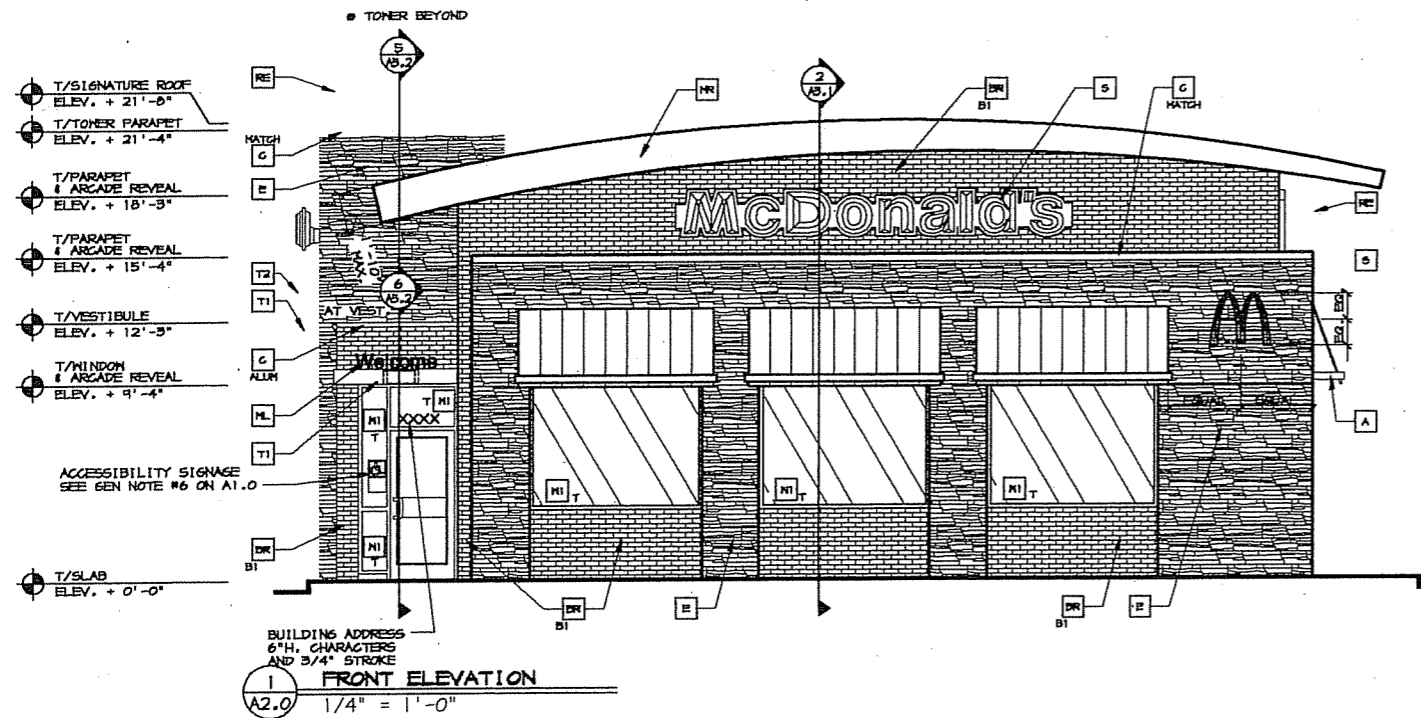
DRAWING NUMBER  
 1PCP19301A



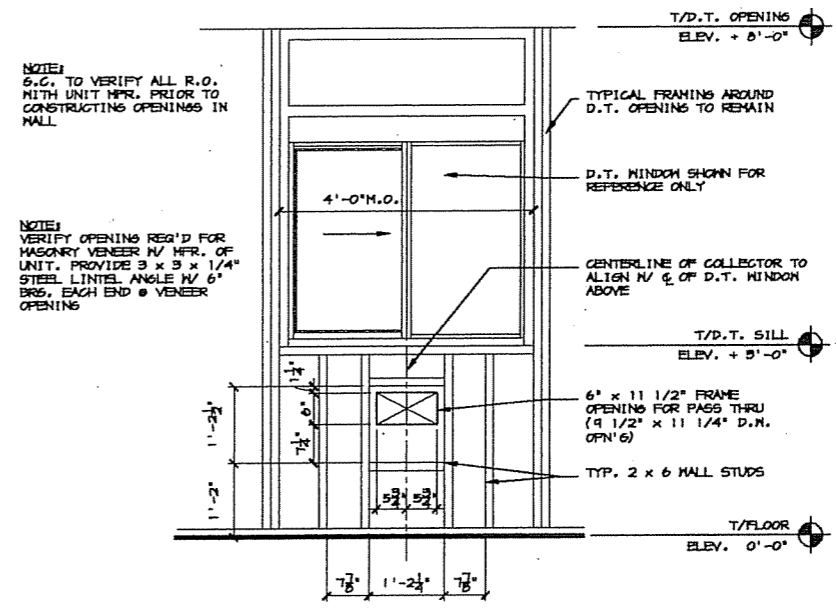
4587-WW BUILDING PLAN (VESTIBULES)  
 4,561 GROSS SQ. FT. / 4,323 NET SQ. FT.  
 74 SEATS (4 ACCESSIBLE SEATS)

THIS DRAWING IS FOR  
 REFERENCE ONLY.  
 SEATING LAYOUT IS SCHEMATIC, THE FINAL  
 SEATING LAYOUT TO BE PROVIDED BY OTHERS.

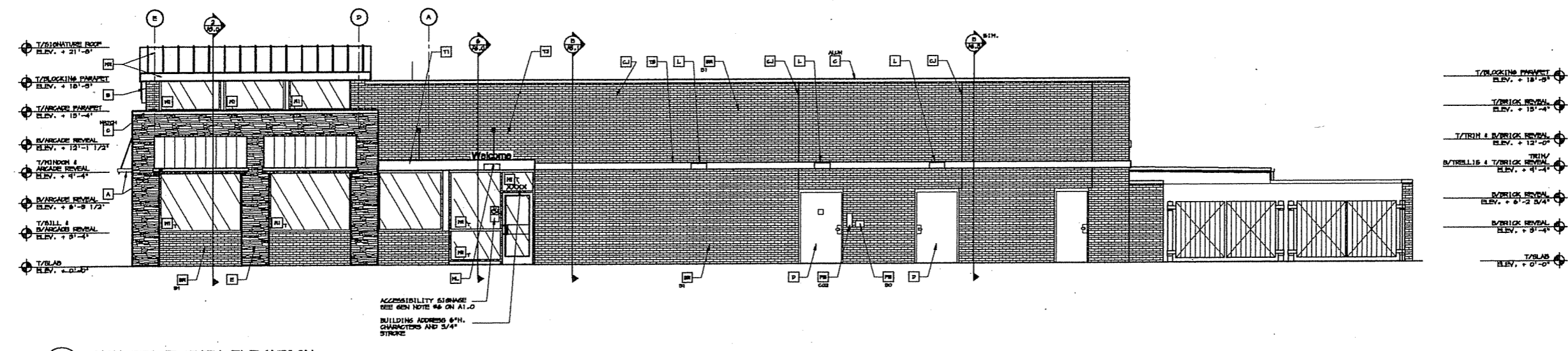
SHEET NO. <b>A1.6</b> SEATING PLAN	TITLE <b>2007 STANDARD BUILDING          4587-WOOD/WOOD</b>	DRAWN BY G. J. L. L. C. A.	PREPARED FOR <b>M. McDonald's USA, LLC</b>
		DATE APRIL 2007	PREPARED BY M. McDonald's USA, LLC
DESCRIPTION WOOD BEARING WALLS 1/4" BRICK EXTERIOR FINISH. WOOD ROOF TRUSS FRAMING EXTERIOR FINISH MASONRY/STENT		CHECKED BY USED TEAM DATE APRIL 2007	THESE DRAWINGS AND SPECIFICATIONS ARE THE CONFIDENTIAL AND PROPRIETARY PROPERTY OF MCDONALD'S USA, LLC. NO PART OF THESE DRAWINGS OR SPECIFICATIONS MAY BE REPRODUCED OR TRANSMITTED IN ANY FORM OR BY ANY MEANS, ELECTRONIC OR MECHANICAL, INCLUDING PHOTOCOPYING, RECORDING, OR BY ANY INFORMATION STORAGE AND RETRIEVAL SYSTEM, WITHOUT THE WRITTEN PERMISSION OF MCDONALD'S USA, LLC. THESE DRAWINGS ARE FOR REFERENCE ONLY AND ARE NOT TO BE USED FOR CONSTRUCTION OR AS A BASIS FOR ANY OTHER PROJECT. REPRODUCTION OF THESE DRAWINGS FOR ANY OTHER PROJECT WITHOUT THE WRITTEN PERMISSION OF MCDONALD'S USA, LLC IS STRICTLY PROHIBITED.
MIB, STATE CODE <b>MI 6</b>	SITE ID 4587-WW	3001 East Washington Avenue - Marquette, MI	REV. DATE DESCRIPTION



**1 FRONT ELEVATION**  
A2.0 1/4" = 1'-0"



**A PASS THRU COLLECTOR & FRAME WALL**  
A2.0 3/4" = 1'-0"



**3 NON-DRIVE-THRU ELEVATION**  
A2.0 3/16" = 1'-0"  
(SEE ELEVATION 2/A2.1 FOR CONTINUATION OF ELEVATION)

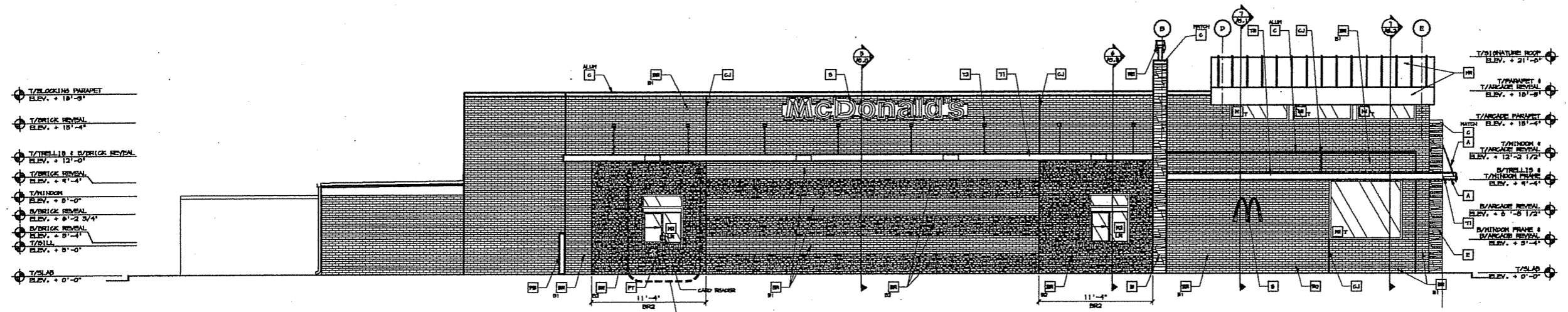
**KEY NOTES:**

- A METAL ANNING - UNDER SEPARATE PERMIT. COLOR TO BE ALTERNATING STRIPES TO MATCH PANTONE 123C AND 104C
- BR FACEBRICK
- BI COLOR: B1 = 'REUBEN RED VEGOUR' BY DELTON OR EQUAL B2 = 'MODULAR MIDLAND BLEND A' BY DELTON OR EQUAL
- C METAL COPING - COLOR = ALUMINUM
- CM METAL COPING - COLOR TO MATCH SURROUNDING MATERIAL
- CL CONTROL JOINT, SEE DETAIL T/M.1
- D HOLLOW METAL DOOR - PAINT TO MATCH COLOR OF SURROUNDING MATERIAL
- E CULTURED STONE
- PB CO2 FILL BOX (ESPH SCHEDULE ITEM 41.00)
- PO OPTIONAL BULK OIL FILL BOX (ESPH SCHEDULE ITEM 700.18) - CONFIRM USE WITH HED PROJECT MANAGER
- L LIGHT FIXTURE (HALL SCENE2) - SEE ELECTRICAL
- ML METAL LETTERING - BY OTHERS
- MR METAL ROOF - STANDING SEAM W/ALUMINUM FINISH PASCIA TRIM, COLOR TO BE 'YELLOW - PANTONE COLOR #10R'
- PD PIPE BOLLARD - PAINTED YELLOW
- PT PASS-THRU GOIN COLLECTOR - OPTIONAL (RHW)
- RE ROOF CAP ELEMENT BY OTHERS
- RO ROOF DRAIN OVERFLOW PIPE PAINT TO MATCH SURROUNDING MATERIAL
- S MCDONALD'S SIGNAGE BY OTHERS - UNDER SEPARATE PERMIT. SEE SIGNAGE SUPPORT NOTE ON THIS SHEET.
- T1 ALUMINUM TRELIS
- T2 TRELIS TIE-BACK
- T3 2' x 8" WALL PASCIA - REFER TO SH. DETAIL B ON SHEET A5.1
- MI EXTERIOR WINDOW ASSEMBLY - SEE ASSEMBLY NOTES ON SHEET A5.0
- T = TEMPERED GLASS
- NO DRIVE-THRU WINDOW BY READY ACCESS - CONFIRM MODEL, OPTIONS, AND SIZE WITH HED PROJECT MANAGER
- NO OPTIONS INCLUDE: TRANSCOM (SHOWN) AIR CURTAIN; FLYMAN/TRANSCOM # 452 80 IN MAX SERVICE OPENING (WHERE RECD BY CODE)
- NO GLIDE DIRECTION: RL = RIGHT TO LEFT LR = LEFT TO RIGHT

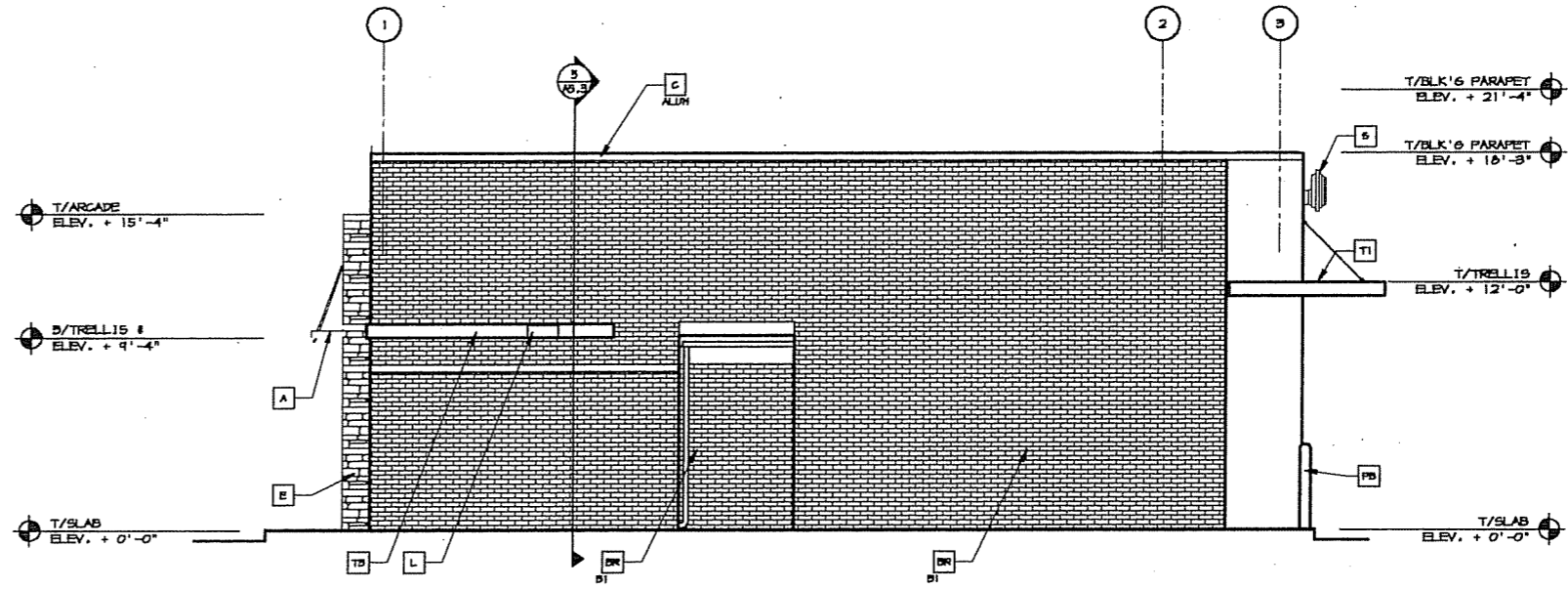
**STRUCTURAL NOTE:**  
UNITARY PASCIA SIGN MALL SUPPORTS TO BE VERIFIED WITH MCDONALD'S AREA CONSTRUCTION MANAGER AND COORDINATED WITH SIGN MANUFACTURER.

<p>DATE: APRIL 2007</p> <p>REVISION: 1</p> <p>DATE: APRIL 2007</p> <p>DATE: APRIL 2007</p>	<p>2007 STANDARD BUILDING</p> <p>45BT-WOOD/WOOD</p> <p>WOOD BRICKING WALLS W/4" BRICK EXTERIOR FINISH</p> <p>WOOD ROOF TRUSS FINISH</p> <p>BRICK EXTERIOR FINISH PARADE/ENTRY</p> <p>STATE: MI</p> <p>1511 SITE ADDRESS</p> <p>048-0028 (S) East Washington Avenue - Madison, MI</p>	<p>REV</p> <p>DATE</p> <p>DESCRIPTION</p>
<p>© 2007 McDonald's USA, LLC</p> <p><b>McDonald's USA, LLC</b></p> <p><small>These drawings and specifications are the confidential property of McDonald's USA, LLC and shall not be copied, reproduced, or disseminated without written authorization. The contract documents were prepared by McDonald's USA, LLC and shall be read in conjunction with the contract documents for use on a different site or at a different time. Use of these drawings for reference or example on another project requires the express written consent of McDonald's USA, LLC. For more information, the contract documents for reuse on another project is not authorized.</small></p>		

C:\DOCUMENTS AND SETTINGS\VCLO782\MY DOCUMENTS\2005 PROJECTS\4587\4587\_A2-0\_A3-1.DWG 11-06-2005 06:49



**1 DRIVE THRU ELEVATION**  
 A2.1 3/16" = 1'-0"  
 (SEE ELEVATION 2/A2.0 FOR CONTINUATION OF ELEVATION)



**3 REAR ELEVATION**  
 A2.1 1/4" = 1'-0"

**KEY NOTES:**

- |  |   |  |   |   |  |
|--|---|--|---|---|--|
| <p><b>A</b> METAL ANNING - UNDER SEPARATE PERMIT. COLOR TO BE ALTERNATING STRIPES TO MATCH PANTONE 129C AND 109C</p> <p><b>BR</b> FACEBRICK</p> <p><b>BL</b> COLOR:<br/>       B1 = "RUBIO RED VELOUR" BY BELDEN OR EQUAL<br/>       B2 = "MODULAR MIDLAND BLEND A" BY BELDEN OR EQUAL</p> | <p><b>C</b> METAL COPING - COLOR - ALUMINUM</p> <p><b>G</b> METAL COPING - COLOR TO MATCH SURROUNDING MATERIAL</p> <p><b>CJ</b> CONTROL JOINT, SEE DETAIL T/A4.1</p> <p><b>D</b> HOLLOW METAL DOOR - PAINT TO MATCH COLOR OF SURROUNDING MATERIAL</p> | <p><b>E</b> CULTURED STONE</p> <p><b>PB</b> CO2 FILL BOX (ESPH SCHEDULE ITEM 44.00)</p> <p><b>PO</b> OPTIONAL BULK OIL FILL BOX (ESPH SCHEDULE ITEM 200.18) - CONFIRM USE WITH HCD PROJECT MANAGER</p> <p><b>L</b> LIGHT FIXTURE (HALL SCENE) - SEE ELECTRICAL</p> | <p><b>ML</b> METAL LETTERING - BY OTHERS</p> <p><b>MR</b> METAL ROOF - STANDING SEAM W/ALUMINUM FINISH FASCIA TRIM, COLOR TO BE "YELLOW - PANTONE COLOR #1049"</p> <p><b>PB</b> PIPE BOLLARD - PAINTED YELLOW</p> <p><b>PT</b> PASS-THRU COIN COLLECTOR - OPTIONAL (1944)</p> <p><b>RE</b> ROOF GAP ELEMENT BY OTHERS</p> | <p><b>R2</b> ROOF DRAIN OVERFLOW PIPE - PAINT TO MATCH SURROUNDING MATERIAL</p> <p><b>S</b> McDONALD'S SIGNAGE BY OTHERS - UNDER SEPARATE PERMIT. SEE STORAGE SUPPORT NOTE ON THIS SHEET.</p> <p><b>T1</b> ALUMINUM TRELLIS</p> <p><b>T2</b> TRELLIS TIE-BACK</p> <p><b>T3</b> 2" x 0" HALL FASCIA - REFER TO B1H. DETAIL 9 ON SHEET A5.1</p> | <p><b>M1</b> EXTERIOR WINDOW ASSEMBLY - SEE ASSEMBLY NOTES ON SHEET A5.0</p> <p>T = TEMPERED GLASS</p> <p><b>R2</b> DRIVE-THRU WINDOW ASSEMBLY BY READY ACCESS - CONFIRM MODEL, OPTIONS, AND SIZE WITH HCD PROJECT MANAGER</p> <p>OPTIONS INCLUDE:<br/>       TRANSOM (SHOWN) &amp; AIR CURTAIN; PLYPAN/TRANSOM &amp; 482 80 IN MAX SERVICE OPENING (WHERE READ BY CODE)</p> <p>SLIDE DIRECTION:<br/>       RL = RIGHT TO LEFT<br/>       LR = LEFT TO RIGHT</p> |
|--|---|--|---|---|--|

**STRUCTURAL NOTES:**  
 UNBODY FASCIA SIGN MOUNT SUPPORTS TO BE VERIFIED WITH McDONALD'S AREA CONSTRUCTION MANAGER AND COORDINATED WITH SIGN MANUFACTURER.

PREPARED BY: © 2007 McDonald's USA, LLC <b>McDonald's USA, LLC</b>	
DRAWN BY: [REDACTED] DATE: APRIL 2007	CHECKED BY: [REDACTED] DATE: APRIL 2007
TITLE: 2007 STANDARD BUILDING 4587-WOOD/WOOD	DESCRIPTION: WOOD ROOF TRUSS FRAMING EXTERIOR FINISH, RESURFACE/ENTER
SHEET NO.: A2.1	ELEVATIONS
H15, STATE CODE	048-0026 3001 East Washington Avenue - Hoffman, MI

REV	DATE	DESCRIPTION	BY