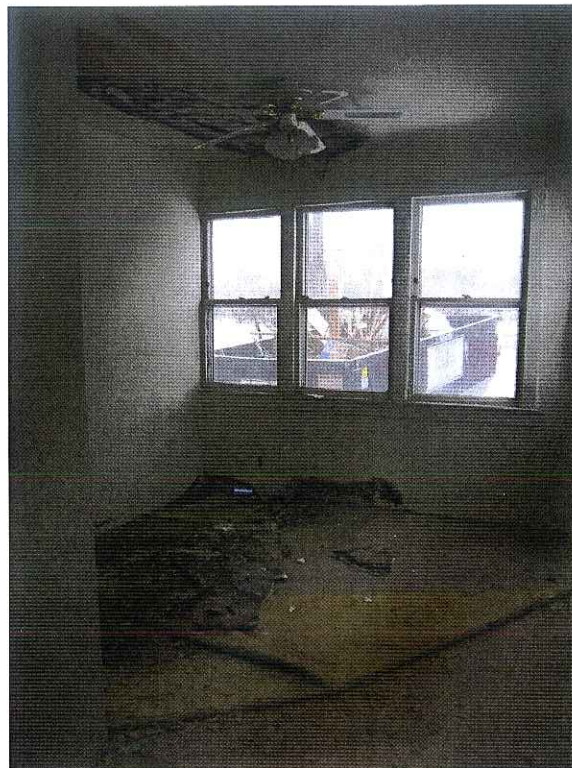


## Property Assessment

310 Dow Ct.

- Extensive molding and water damage exists throughout the house
- The house is in heavy disrepair, with damage to nearly all surfaces.













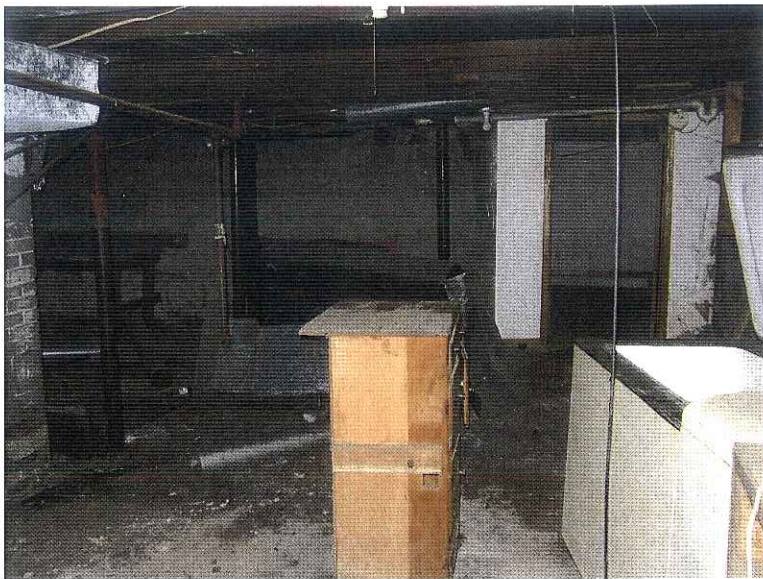


312 Dow Ct.

- The front porch has been removed after it became unstable, and the only entrance is from the back.
- Mold is present throughout the basement as well as on many of the walls and ceilings.
- The house is in heavy disrepair, with damage to nearly all surfaces.





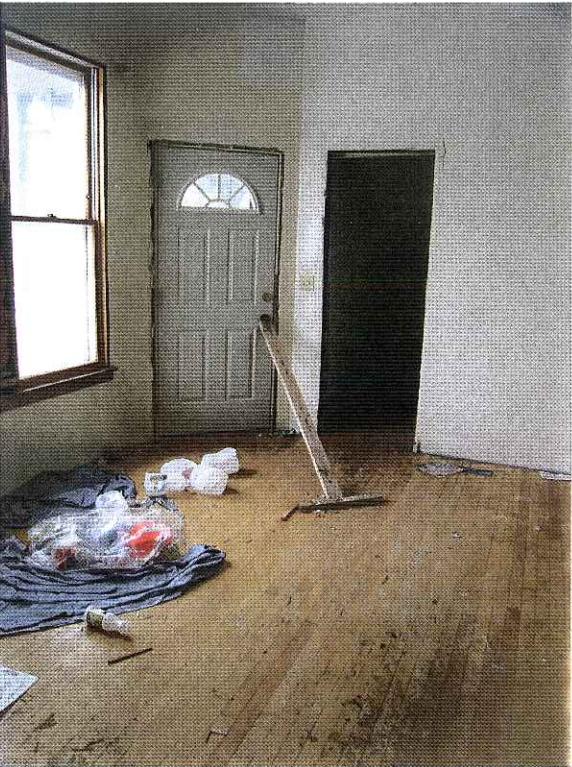
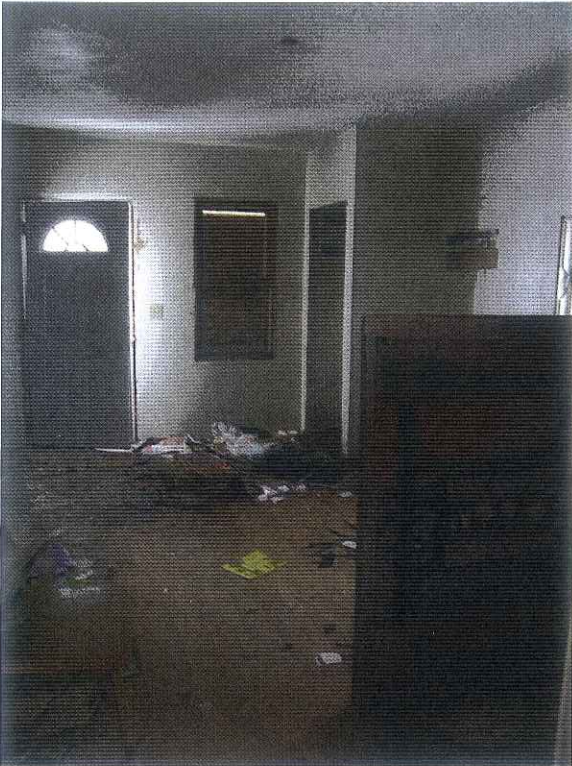


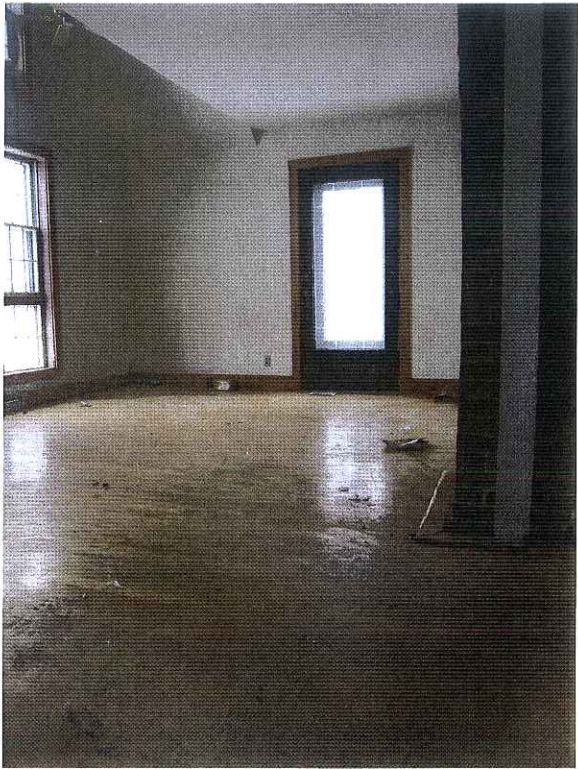


318 Dow Ct.

- The previous owner has removed all items of an potential value; light fixtures, appliances, doors, door frames, etc.
- Mold is present throughout the basement as well as on many of the walls and ceilings.
- The house is in heavy disrepair, with damage to most floor, wall and ceiling surfaces.







J.H. Findorff and Son Demolition Application



J.H. Findorff and Son Demolition Application

334 Dow Ct.

- Mold is present throughout the basement as well as on many of the walls and ceilings.
- The house is in heavy disrepair, with damage to most floor, wall and ceiling surfaces.

