

Consultants:



Notes:

PRELIMINARY
NOT FOR CONSTRUCTION

DATE	DESCRIPTION	BY
03/07/17	PLAN COMMISSION SUBMITAL	
	Revisions/Remarks	

J. H. FINDORFF & SONS
DEMOLITION PROPOSAL

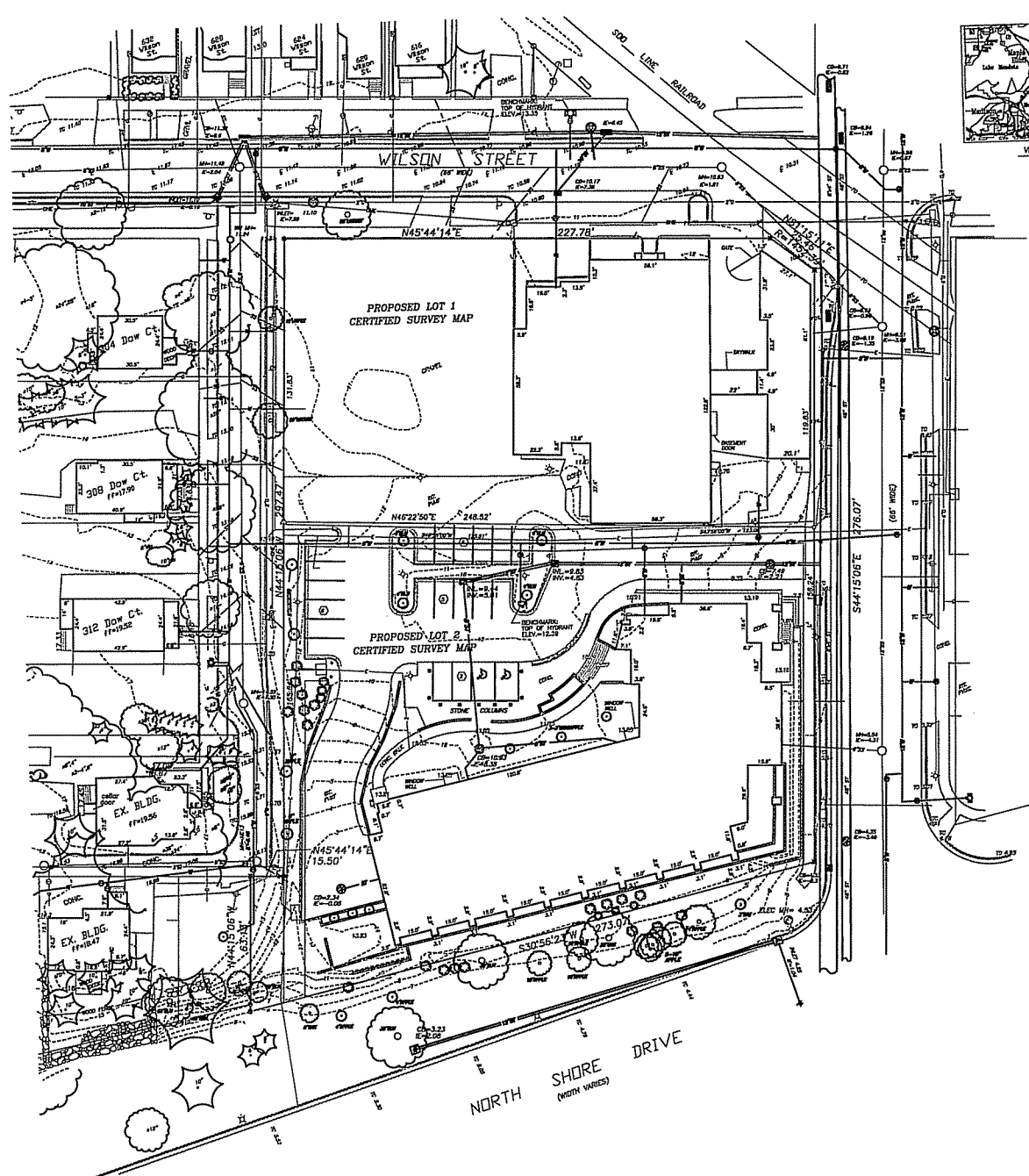
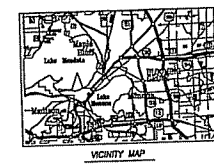
300 S. BEDFORD
MADISON, WISCONSIN

Existing Site Survey

Project Number: 2006.01.00
Drawing No: 0000
Scale: PLF

- LEGEND**
- 3/4" SIZED ROAD PAV. STAKE
 - △ P.E. MARK
 - CIRCLED "X" OVERHEAD ELECTRIC LINE
 - SWIFT SEWER
 - S.W. MAIN
 - GAS MAIN
 - UNDERGROUND ELECTRIC
 - UNDERGROUND FIBER OPTIC
 - STORM SEWER
 - ELECTRIC TRANSFORMER/VALLEY
 - MANHOLE
 - GUY WIRE/ANCHOR
 - POWER POLE W/OUT
 - LIGHT POLE
 - GAS METER
 - TELEPHONE PEDESTAL
 - VALVE
 - MOUNT
 - GUARD POST
 - CISTERN
 - MONITORING WELL
 - SIGN
 - CONCRETE/TYPIC WALL
 - TANKER WALL
 - CONC. CURB
 - BOULDER WALL
 - TREE W/ SIZE
 - EVERGREEN W/ SIZE
 - SHRUB
 - SPOT ELEVATION (8 DECIMAL FT.)
 - TO 11.18
 - TOP OF CURB ELEVATION
 - EXISTING CONTOUR
 - NOTED ELEVATIONS ARE IN CITY OF MADISON DATUM
 - ALIQUOT TRACK
 - FENCE
 - ACCESSIBLE PARKING SPACE
 - NUMBER OF REGULAR PARKING SPACES
 - ALIQUOT CROSSING SIGNAL

SEARCHING UTILITIES:
Madison Gas & Electric Company
Crews: Meter Area Operator
131 South Main Street
Madison, WI 53703
(608) 224-5800
City of Madison Water Utility
118 East Oak Avenue
Madison, WI 53703-1431
(608) 278-4811
City of Madison Street Construction and Maintenance
1602 East Street
Madison, WI 53712
(608) 286-4330
Dunbar Communications
2712 Ames Street
Madison, WI 53718
(608) 274-3822
SDC
122 Elm Street
Madison, WI 53704
(608) 222-5111



Consultants:



Notes:

PRELIMINARY
NOT FOR CONSTRUCTION

03/17/17	PLAN COMMISSION SUBMITTAL	
Date	Issuance/ToWhom	Symbol

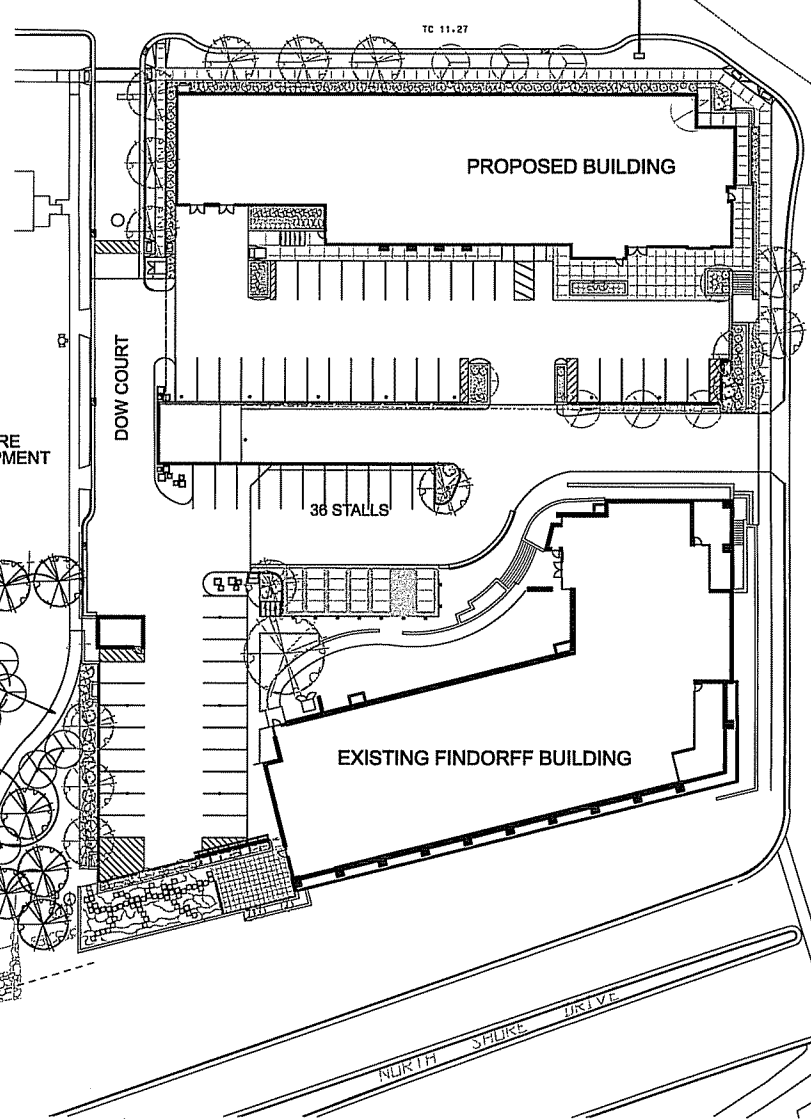
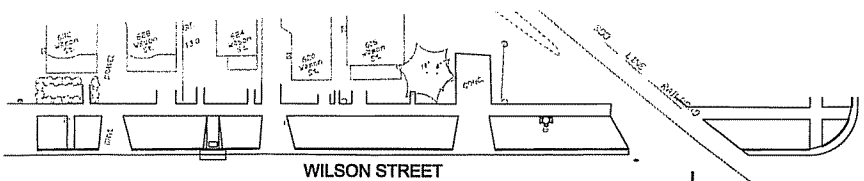
J. H. FINDORFF & SONS
DEMOLITION PROPOSAL

300 S. BEDFORD
MADISON, WISCONSIN

Working Title
PLANTING PLAN

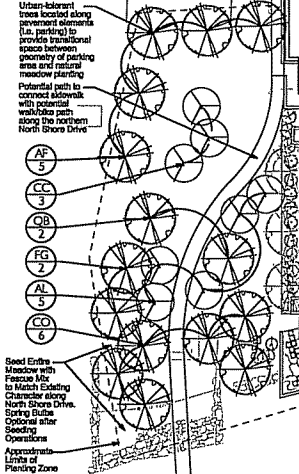
PL Project Number: 2006-01-00
Drawing No: RLF
Scale: As Shown

L100

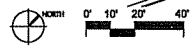


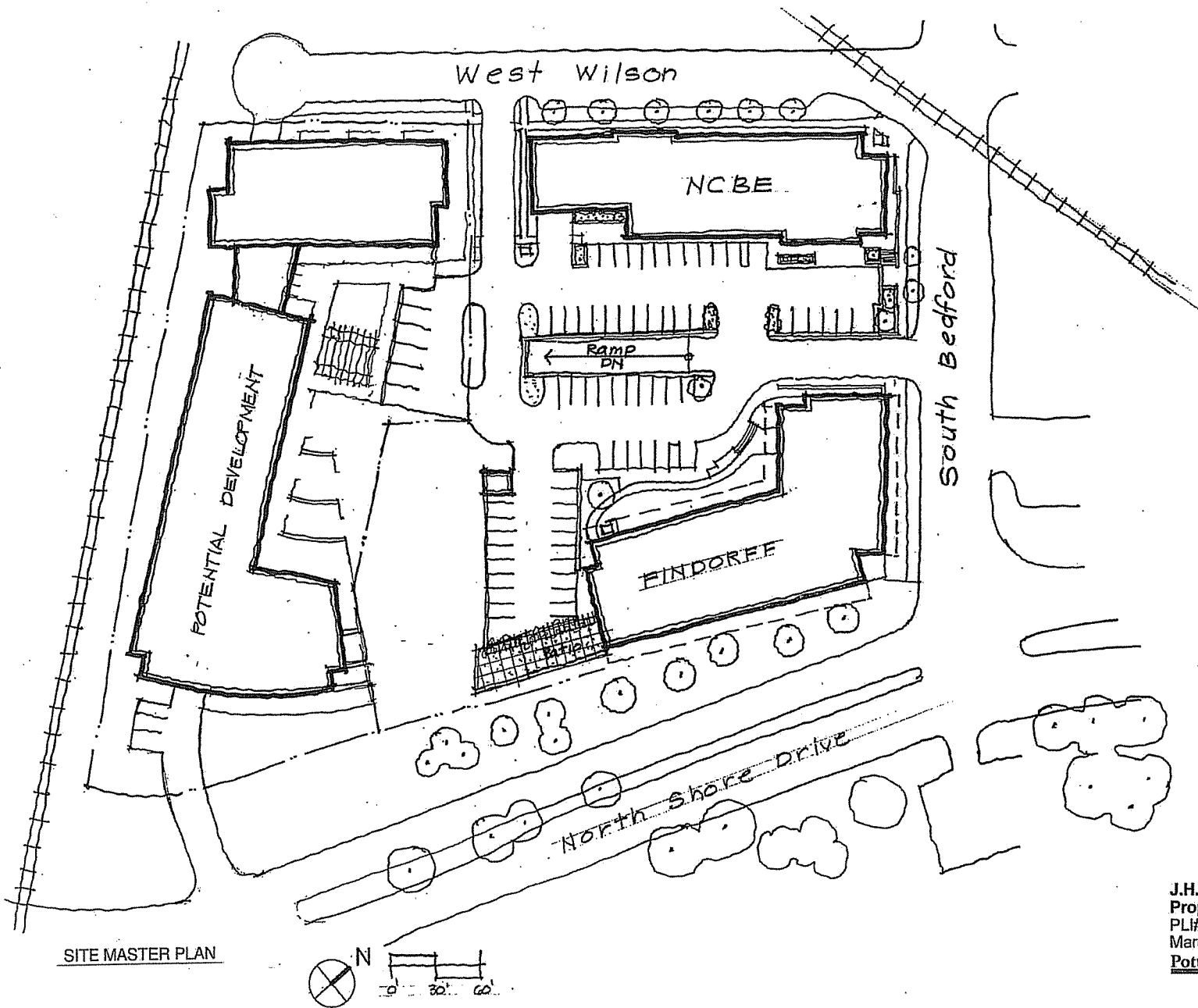
PLANT SCHEDULE
FINDORFF GREENSPACE

KEY	SCIENTIFIC NAME	COMMON NAME	SIZE	PLANTING	HEIGHT	ZONE	QTY.	COMMENTS
AF	FRAXINUS AMERICANA	AMERICAN LINDEN	24"	2-10'	8'	SS	8	10' FROM DRIVE, OVER 10' WINDSTOPPER
CC	QUERCUS LAEVIS	WHITE OAK	24"	2-10'	8'	SS	8	10' FROM DRIVE, OVER 10' WINDSTOPPER
QB	QUERCUS BICOLOR	BURR OAK	24"	2-10'	8'	SS	2	10' FROM DRIVE, OVER 10' WINDSTOPPER
FG	FRAXINUS AMERICANA	AMERICAN LINDEN	24"	2-10'	8'	SS	2	10' FROM DRIVE, OVER 10' WINDSTOPPER
AL	ALNUS INCANA	WALNUT	24"	2-10'	8'	SS	2	10' FROM DRIVE, OVER 10' WINDSTOPPER
CO	CORYLUS CORNUTA	BURR CHERRY	24"	2-10'	8'	SS	2	10' FROM DRIVE, OVER 10' WINDSTOPPER
AL	ALNUS INCANA	WALNUT	24"	2-10'	8'	SS	8	10' FROM DRIVE, OVER 10' WINDSTOPPER
CC	QUERCUS LAEVIS	WHITE OAK	24"	2-10'	8'	SS	8	10' FROM DRIVE, OVER 10' WINDSTOPPER



1 PLANTING PLAN
1"=20'-0"





SITE MASTER PLAN

Plan Description

This plan shows the existing Findorff building with a new surface parking lot to the west. Findorff will share the ramp to the underground parking with NCBE.

A potential future addition is shown to the west of Findorff's site. This site has not been designed at this time. Potter Lawson is showing how that site could be developed to accommodate Findorff's Building Expansion.

J.H. Findorff & Son
Property Demolition
 PL# 2006.01.00
 March 07, 2007
Potter Lawson

A101