

NORTHSIDE PRAIRIE SENIOR LIVING COMMUNITY

LOCATION MAP

NTS

August 21, 2013

Engberg Anderson Project No. 132290.00





- KEY**
-  LARGE SHADE TREE
 -  MEDIUM SHADE TREE
 -  EVERGREEN TREE
 -  ORNAMENTAL TREE
 -  WALKWAY
 -  CROSSWALK WITH SPEEDBUMP
 -  GATHERING AREA
 -  SEATING NOOK
 -  MAIN ENTRANCE
 -  SECONDARY ENTRY
 -  STAIRWELL EXIT
 -  PARKING ENTRY

NORTHSIDE PRAIRIE SENIOR LIVING COMMUNITY

**Engberg
Anderson**

MILWAUKEE • MADISON • TUCSON

CONCEPTUAL LANDSCAPE PLAN

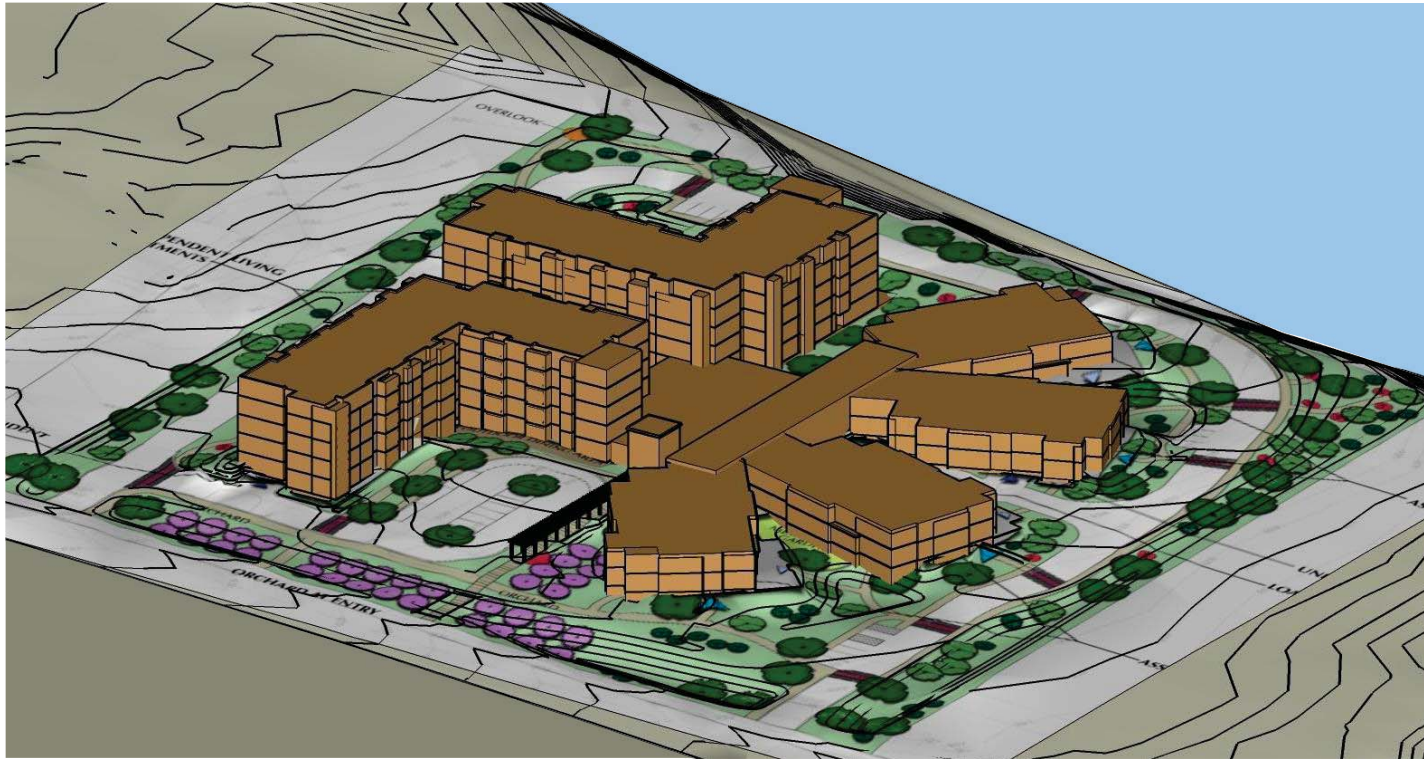
1" = 40'-0"

September 4, 2013

Engberg Anderson Project No. 132290.00

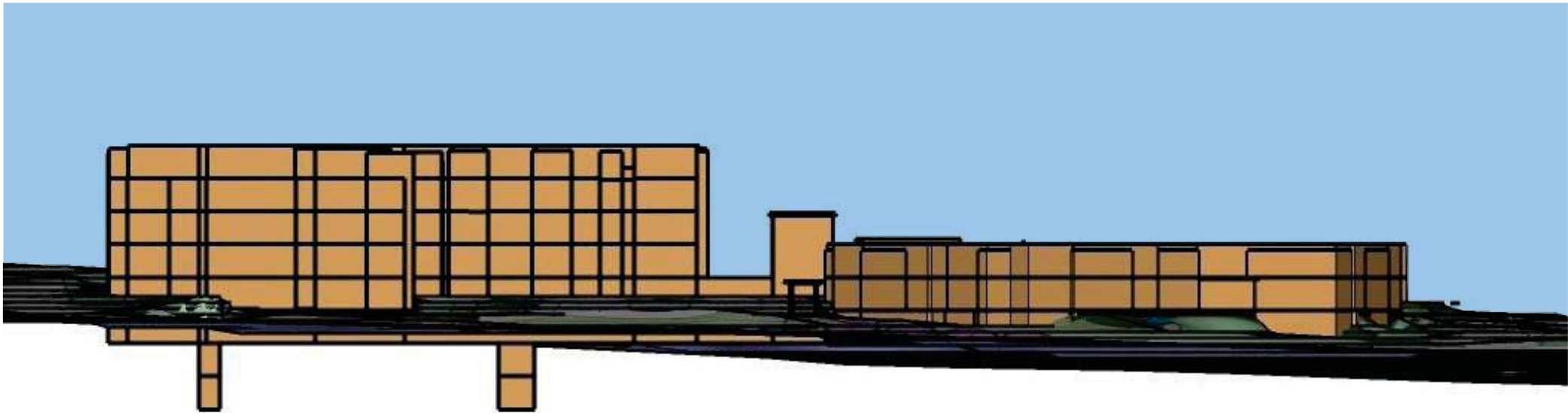






VIEW FROM SOUTHWEST

VIEW FROM SOUTHEAST



SOUTH ELEVATION



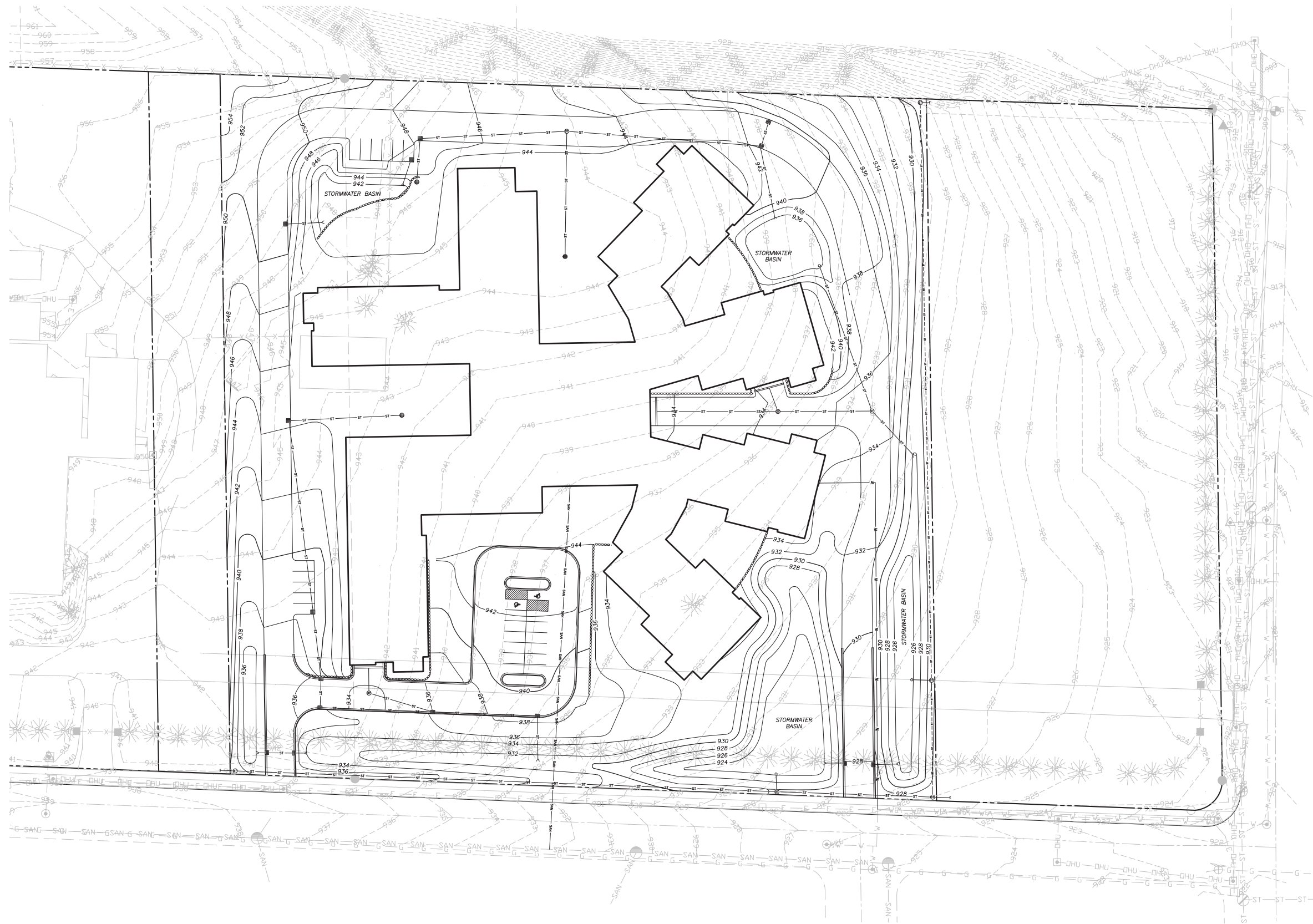
NORTHSIDE PRAIRIE SENIOR LIVING COMMUNITY

CONCEPTUAL MASSING MODEL AND ELEVATION

NTS

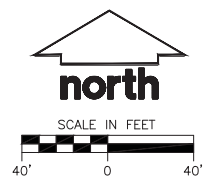
September 4, 2013

Engberg Anderson Project No. 132290.00



LEGEND (PROPOSED)

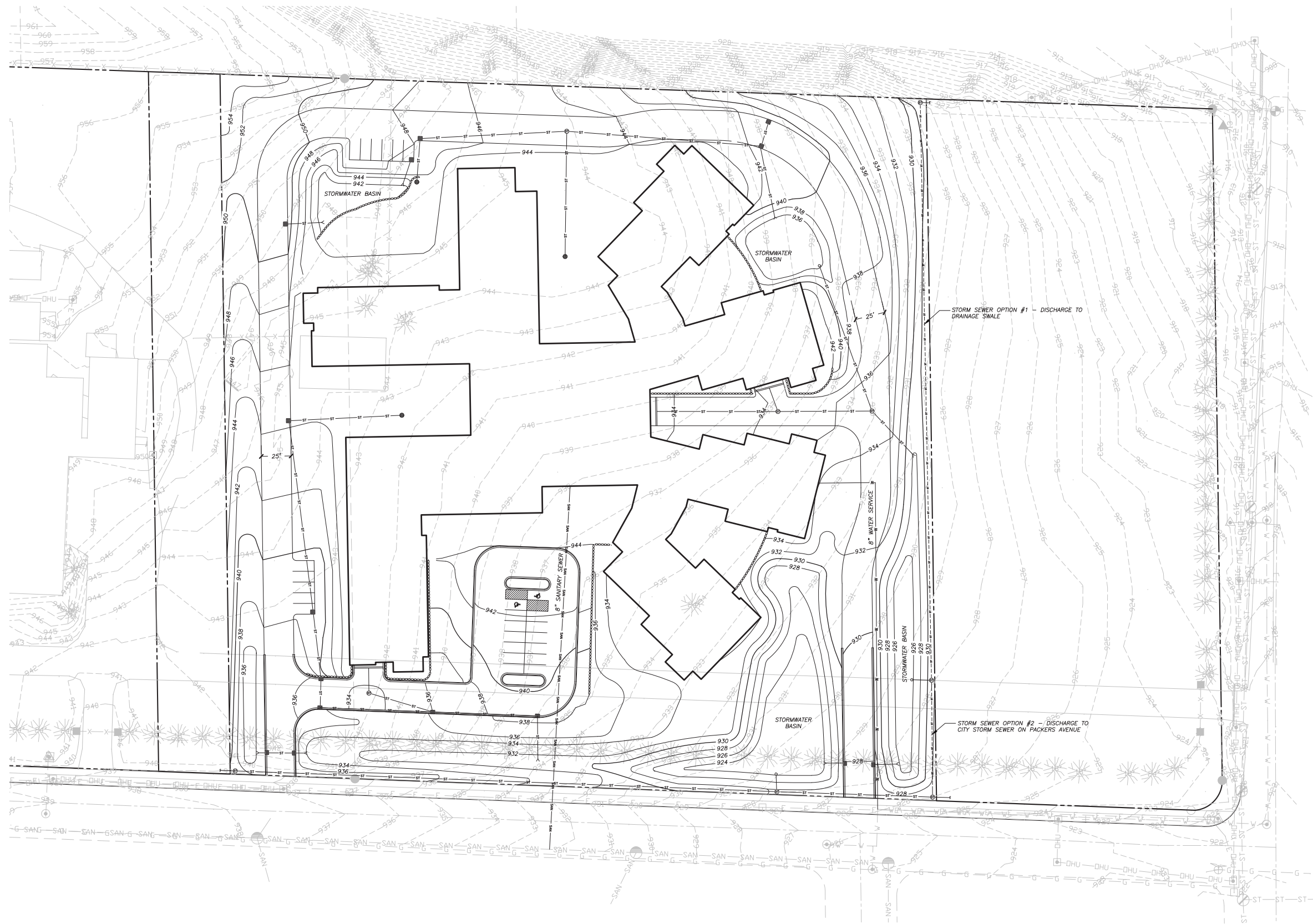
---	PROPERTY LINE
---	PROPOSED 2 FOOT CONTOUR
---	PROPOSED 10 FOOT CONTOUR
▭	ASPHALT PAVEMENT
▭	CONCRETE PAVEMENT
▭	CURB AND GUTTER
▭	STONE RETAINING WALL



NORTHSIDE PRAIRIE SENIOR LIVING COMMUNITY

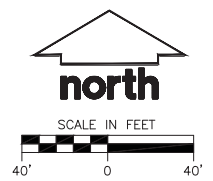
CONCEPTUAL SITE PLAN
 1" = 40'
 September 4, 2013
 Engberg Anderson Project No. 132290.00

MILWAUKEE MADISON TUCSON



LEGEND (PROPOSED)

---	PROPERTY LINE
ST	STORM SEWER
SAN	SANITARY SEWER
W	WATER SERVICE
▭	ASPHALT PAVEMENT
▭	CONCRETE PAVEMENT
▬	CURB AND GUTTER
▬	STONE RETAINING WALL



NORTHSIDE PRAIRIE SENIOR LIVING COMMUNITY

CONCEPTUAL UTILITY PLAN

1" = 40'

September 4, 2013

Engberg Anderson Project No. 132290.00