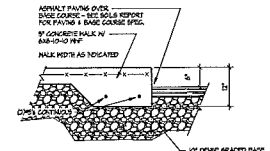


Consultant



1 SIDEWALK/CURB

Notes
1. MAXIMUM SLOPE AT ALL HANDICAP ACCESSIBLE WALKS 1:20. MAXIMUM SLOPE AT HANDICAP RAMPS 1:12. RAMPS EXCEEDING MORE THAN 4' CHANGE IN ELEVATION TO HAVE HANDRAILS ON BOTH SIDES.

2. ALL DRIVEWAYS, CURBS ADJACENT TO DRIVEWAYS, AND SIDEWALK CONSTRUCTION WITHIN THE PUBLIC RIGHT-OF-WAY SHALL BE COMPLETED IN ACCORDANCE WITH CITY OF MADISON STANDARD SPECIFICATIONS FOR PUBLIC WORKS CONSTRUCTION BY A CONTRACTOR CURRENTLY LICENSED BY THE CITY.

3. ALL NEW DRIVES TO BE CONSTRUCTED WITH CURBS IF APPROVED AS IN ACCORDANCE WITH MADISON GENERAL ORDINANCE SECTION 10.04(4).

4. ALL TRASH TO BE COLLECTED IN UNDERGROUND PARKING GARAGES. RECYCLING AREAS TO BE PROVIDED IN TRASH ROOM.

5. SEE GRADING AND UTILITY PLANS FOR ADDITIONAL INFORMATION.

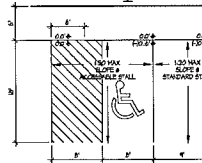
6. CONFORM TO ALL REQUIRED FIRE LINES SHALL BE PROVIDED PRIOR TO THE PLACEMENT OF CONCRETE MATERIALS AT THE BUILDING SITE, OR THE CONSTRUCTION OF ANY PORTION OF A BUILDING ABOVE THE FOOTING AND FOUNDATION.

7. BIKE STALLS TO BE IN ACCORDANCE TO MADISON GENERAL ORDINANCE 20.11, FOR THE TYPES OF BIKES SPECIFICALLY SEE SUBSECTION 20.11(A) AND 20.11(2).



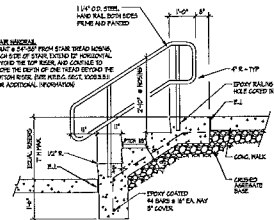
2 REJECT CURB

NOTE: VMS ACCORDING TO PARALLEL WITH THE CURB



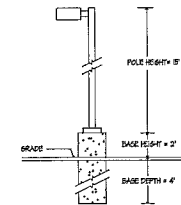
3 ACCESSIBLE PARKING STALL

Revisions
Plan Completion Submittal - September 21, 2005 Initial
Use Submittal - October 12, 2005
Final Use Submittal - November 21, 2005
Parking Submittal - January 04, 2006
Revised Parking Submittal - Jan. 19, 2006
Issued For Shop Plans - February 28, 2006
Issued For Construction - March 7, 2006
Revised Construction Issue Bldg 2 - March 23, 2006
Revised For Phase 1 A+B+C - February 18, 2004
Attention To B/C - February 11, 2004



4 EXTERIOR STAIR DETAIL

Project Title

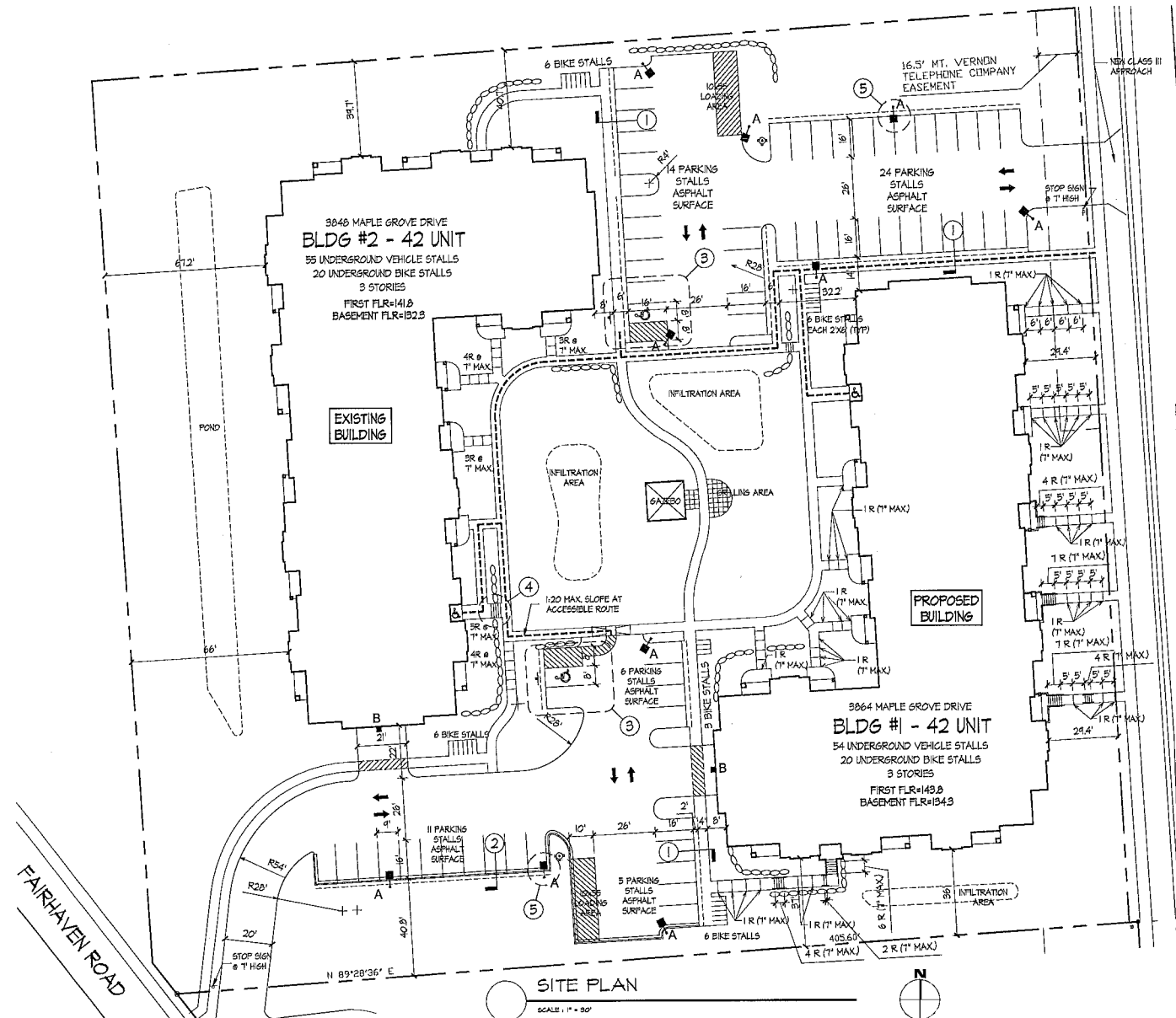


5 LIGHT POLE BASE

3048 & 3064 Maple Grove Drive
Drawing Title
Site Plan

Project No. 0525 Drawing No. C-1.1

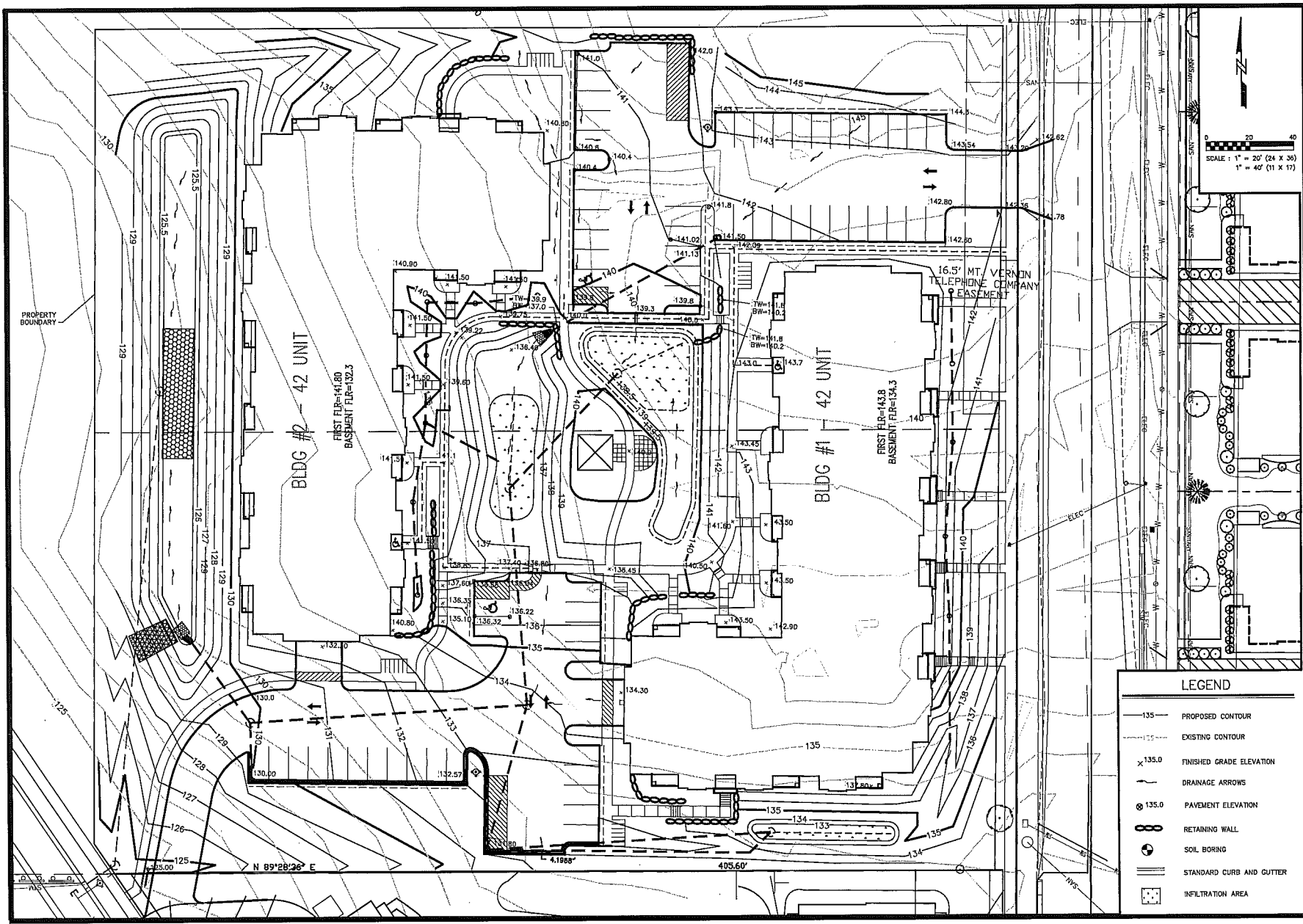
Notes: All dimensions are in feet and inches unless otherwise specified. All work to be in accordance with the City of Madison Standard Specifications for Public Works Construction. All materials to be used shall be of the highest quality and shall be approved by the City of Madison. All work to be completed in accordance with the City of Madison Standard Specifications for Public Works Construction.



SITE PLAN

SCALE: 1" = 30'

Symbol	Label	Qty	Manufacturer	Catalog Number	Description	Lamp	Lumens	LLF	Watts	Mounting
A	10	10	10	MACH1035L	1" AREA CUTOFF/ VASBACK (L) SHIELD	103 WATT MH	8100	1.20	100	1" POLE ON 2" CONCL. BASE
B	2	2	ES405-D		RECTANGULAR SECURITY / DRIP SHIELDED	50 WATT MH	3000	1.20	65	8" UP ON SIDE OF BUILDING



NO.	REVISION	DATE	BY
1	ISSUE	11-14-14	JRD

NO.	REVISION	DATE	BY
1	ISSUE	11-14-14	JRD

NO.	REVISION	DATE	BY
1	ISSUE	11-14-14	JRD

CITY OF MADISON, WISC

5010 VOESER ROAD
MADISON, WISCONSIN 53718
608-889-0444 | www.cityofmadison.com

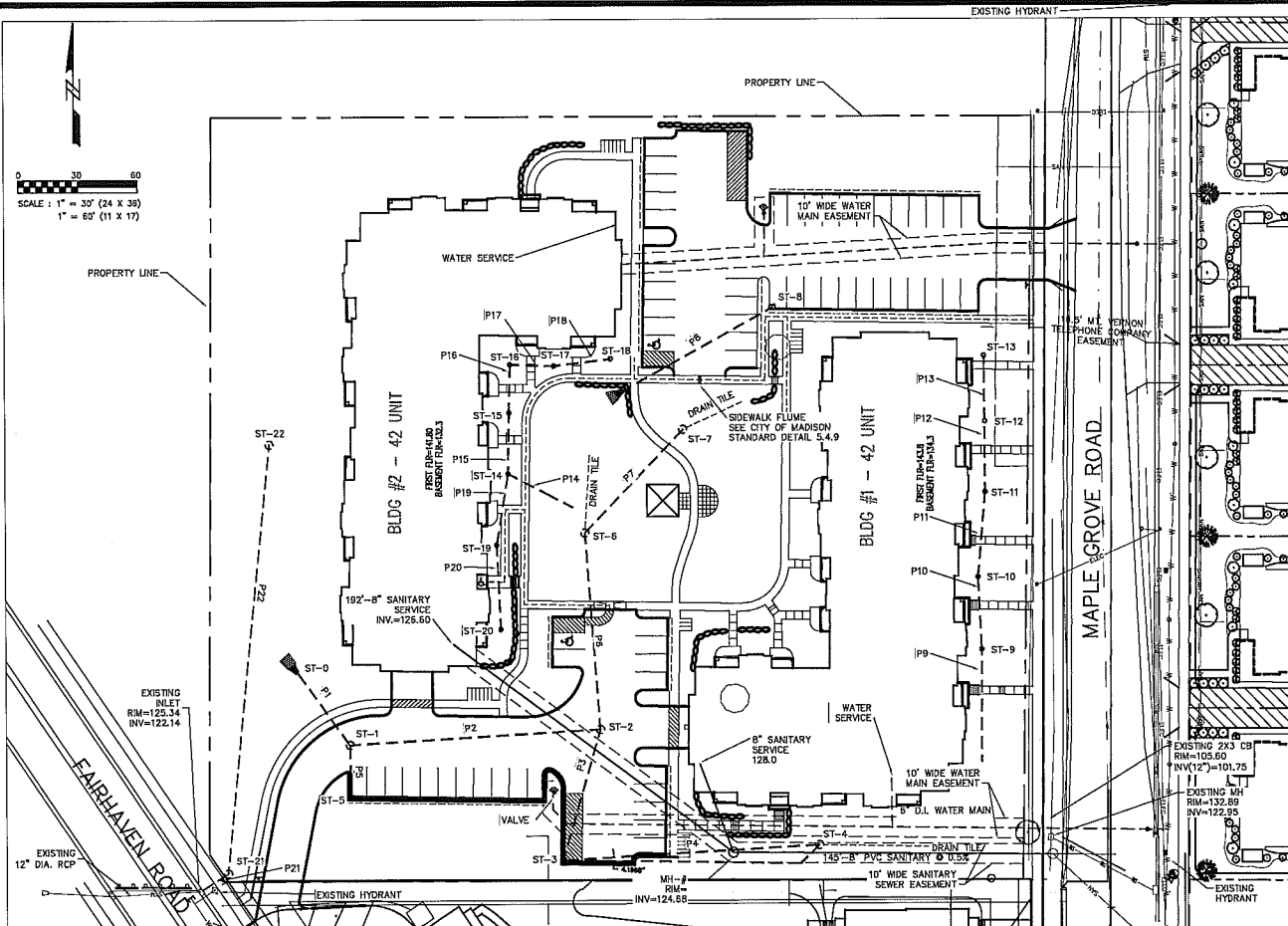
3848 & 3864 MAPLE GROVE ROAD

GRADING PLAN

SNYDER & ASSOCIATES, INC.

Project No: 114.0068.30
Sheet C1.2

Project No: 114.0068.30
Sheet C1.2



STORM SEWER INLET DATA:

#	TYPE	TOP OF CASTING	DISCHARGE ELEV.	STRUCTURE DEPTH (ft)
ST-1	4' CB w/ ILET	129.65	126.09	3.57
ST-2	4' CB w/ ILET	133.82	128.01	5.82
ST-3	H ILET	132.24	128.85	3.40
ST-4	3' CB w/ ILET	133.00	128.74	3.26
ST-5	H ILET	130.44	128.99	3.45
ST-6	3' CB w/ ILET	136.00	132.34	3.66
ST-7	3' CB w/ ILET	138.00	134.75	3.25
ST-8	3' CB w/ ILET	141.84	138.02	3.82
ST-9	6" Area Inlet	138.20	138.56	1.94
ST-10	6" Area Inlet	139.00	136.92	2.08
ST-11	6" Area Inlet	141.00	137.35	3.65
ST-12	6" Area Inlet	141.75	137.60	4.15
ST-13	6" Area Inlet	142.00	137.53	4.47
ST-14	6" Area Inlet	138.00	135.13	2.87
ST-15	6" Area Inlet	138.75	136.31	2.44
ST-16	6" Area Inlet	138.75	135.48	2.29
ST-17	6" Area Inlet	138.75	135.59	2.10
ST-18	6" Area Inlet	138.75	136.76	1.99
ST-19	6" Area Inlet	140.00	138.49	3.51
ST-20	6" Area Inlet	140.00	136.91	3.09
ST-21	3' CB w/ ILET	127.2	122.6	4.61
ST-22	3' CB w/ ILET	127.05	123.0	2.05

STORM SEWER PIPE DATA:

Pipe #	From (upstream)	To (downstream)	Length (ft)	Slope (%)	Size (inches)	Type	Invert In	Invert Out
P1	ST-1	ST-0	45	1.30	21	HOPE	126.09	125.60
P2	ST-2	ST-1	160	1.20	21	HOPE	128.01	128.00
P3	ST-3	ST-2	58	0.50	15	HOPE	128.85	128.61
P4	ST-4	ST-3	129	0.50	12	HOPE	128.74	129.10
P5	ST-5	ST-1	26	0.58	12	HOPE	128.99	128.24
P6	ST-6	ST-2	99	3.87	16	HOPE	132.34	128.51
P7	ST-7	ST-6	72	3.00	12	HOPE	134.75	132.59
P8	ST-8	Apron Endwall	66	1.50	12	HOPE	138.02	137.00
P9	ST-9	Apron Endwall	55	1.00	8	HOPE	138.56	138.00
P10	ST-10	ST-9	36	1.00	8	HOPE	136.92	136.56
P11	ST-11	ST-10	43	1.00	8	HOPE	137.35	136.92
P12	ST-12	ST-11	35	1.00	8	HOPE	137.60	137.25
P13	ST-13	ST-12	33	1.00	8	HOPE	137.53	137.60
P14	ST-14	Apron Endwall	36	0.50	8	HOPE	135.13	136.00
P15	ST-15	ST-14	30	0.50	8	HOPE	136.31	136.13
P16	ST-16	ST-15	25	0.50	8	HOPE	135.48	136.21
P17	ST-17	ST-16	22	0.50	8	HOPE	135.59	136.46
P18	ST-18	ST-17	28	0.50	8	HOPE	136.76	136.59
P19	ST-19	ST-18	36	1.00	8	HOPE	138.49	138.13
P20	ST-20	ST-19	42	1.00	8	HOPE	136.91	136.49
P21	Existing	ST-21	19	1.13	12	RCP	122.69	122.38
P22	ST-21	ST-22	213	1.13	12	RCP	125.00	122.69

GENERAL NOTES:
 CONTRACTOR SHALL OBTAIN NECESSARY CONNECTION AND EXCAVATION PERMITS FROM CITY ENGINEERING PRIOR TO WORK COMMENCING.
 CONTRACTOR SHALL FIELD VERIFY THE SIZE, TYPE, LOCATION, AND ELEVATION OF EXISTING UTILITIES.

THE CONTRACTOR SHALL NOTIFY ALL AREA UTILITY COMPANIES PRIOR TO COMMENCING WORK UNDER THIS CONTRACT AND REQUEST THAT UNDERGROUND UTILITIES BE LOCATED IN ACCORDANCE WITH SECTION 182.017(2) OF THE WISCONSIN STATUTES. ANY LOCATIONS AS SHOWN ON THE PLANS ARE APPROXIMATE ONLY. CONTRACTOR SHALL FIELD VERIFY THE SIZE, TYPE, LOCATION, AND ELEVATION OF EXISTING UTILITIES.

ALL UTILITY WORK WITHIN THE PUBLIC RIGHT OF WAY SHALL BE CONSTRUCTED PER THE CITY OF MADISON STANDARD SPECIFICATIONS FOR PUBLIC WORKS CONSTRUCTION.

ALL PRIVATE UTILITY CONSTRUCTION WORK SHALL BE COVERED BY THESE SPECIFICATIONS. THE STANDARD SPECIFICATIONS FOR SEWER AND WATER CONSTRUCTION IN WISCONSIN, SIXTH EDITION, DATED DECEMBER 22, 2003, AND THE STANDARD SPECIFICATIONS FOR HIGHWAY AND STRUCTURE CONSTRUCTION 2003 EDITION OF THE WISCONSIN DEPARTMENT OF TRANSPORTATION, DIVISION OF HIGHWAYS, OF D.O.T.'S STANDARD SPECIFICATIONS FOR ROAD AND BRIDGE CONSTRUCTION HERINAFTER REFERRED TO AS "D.O.T. SPECIFICATIONS."

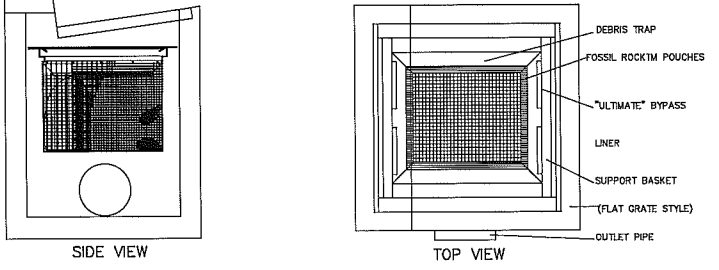
CATCH BASINS w/ ILETS INCLUDED IN THIS PLAN SHALL CONTAIN FLO-GARD "PLUS" CATCH BASIN INSERTS AS DISTRIBUTED BY KRISTAR OR EQUIVALENT. SAID INSERTS SHALL BE INSPECTED AND MAINTAINED AS DIRECTED IN THE RECORDED STORMWATER MAINTENANCE AGREEMENT.

FLO-GARD INSERTS SHALL BE INSPECTED AND MAINTAINED AS DIRECTED IN THE RECORDED STORMWATER MAINTENANCE AGREEMENT.

ALL STORM SEWER PIPE TO BE RCP CLASS III REINFORCED CONCRETE WITH RUBBER GASKETS OR HOPE PIPE.

ALL AREA INLET CASTINGS TO BE NENAH MODEL R241& ILETS INCLUDED IN THIS PLAN SHALL CONTAIN FLO-GARD "PLUS" CATCH BASIN INSERT MODEL FGRPF-20F AS DISTRIBUTED BY KRISTAR OR EQUIVALENT.

UNLESS OTHERWISE INDICATED, WATER AND SANITARY SEWER LATERALS AND STORM SEWER ENDS SHALL EACH BE MARKED WITH A 4" X 4" POST EXTENDING FOUR FEET (4') BELOW GROUND AND THREE FEET (3') ABOVE GROUND, WHERE BOTH THE WATER SERVICE AND THE SEWER LATERAL END AT THE SAME LOCATION, A COMMON 4" X 4" POST MAY BE USED TO MARK THE ENDS.



- NOTES:**
- FLO-GARD-PLUS MODEL FGP-1836W HIGH CAPACITY CATCH BASIN INSERTS ARE AVAILABLE TO FIT NON STANDARD OR COMBINATION CATCH BASIN SIZES AND STYLES (SEE SPECIFIER CHART). REFER TO THE FLO-GARD-PLUS (FRAME MOUNT INSERT) FOR DEVICES TO FIT INDUSTRY STANDARD SIZE FLAT GRATED CATCH BASIN ILETS.
 - FILTER INSERT SHALL HAVE BOTH AN "INITIAL" FILTERING BYPASS AND "ULTIMATE" HIGH-FLOW BYPASS FEATURE. FILTER MODEL FGP-1836W HAS A TOTAL BYPASS CAPACITY OF 6.7 CFS. FILTER MODEL FGRPF-20F HAS A TOTAL BYPASS CAPACITY OF 4.7 CFS.
 - FILTER ASSEMBLY SHALL BE CONSTRUCTED FROM STAINLESS STEEL (TYPE 304).
 - ALLOW A MINIMUM OF 2'-0" OF CLEARANCE BETWEEN THE BOTTOM OF GRATE AND TOP OF INLET OR OUTLET PIPE(S). REFER TO THE FLO-GARD INSERT FOR "SHALLOW" INSTALLATIONS.
 - FILTER MEDIUM SHALL BE RUBBERIZER INSTALLED AND MAINTAINED IN ACCORDANCE WITH MANUFACTURER RECOMMENDATIONS.

(A) CATCH BASIN FILTER INSERT
 NOT TO SCALE

UTILITY PLAN

3848 & 3864 MAPLE GROVE ROAD

CITY OF MADISON, WISCONSIN

SNYDER & ASSOCIATES, INC.

600 WISCONSIN ROAD
 MADISON, WISCONSIN 53718
 608-938-0444 | www.snyder-assoc.com

Project No: 114.0068.30
 Sheet C1.4

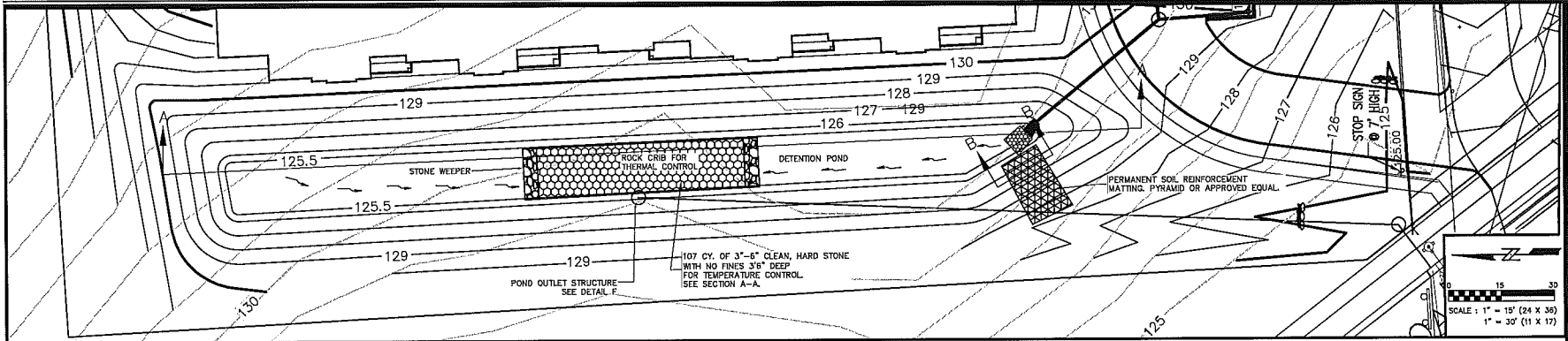
Revision: M.L.C. Checked by: XXX Date: 2-12-2014
 Drawn by: XXX Date: 2-12-2014
 Scale: 1" = 30'
 Title: Revise Project Title

Project No: 114.0068.30
 Sheet C1.4

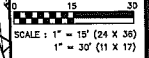
Revision: M.L.C. Checked by: XXX Date: 2-12-2014
 Drawn by: XXX Date: 2-12-2014
 Scale: 1" = 30'
 Title: Revise Project Title

Project No: 114.0068.30
 Sheet C1.4

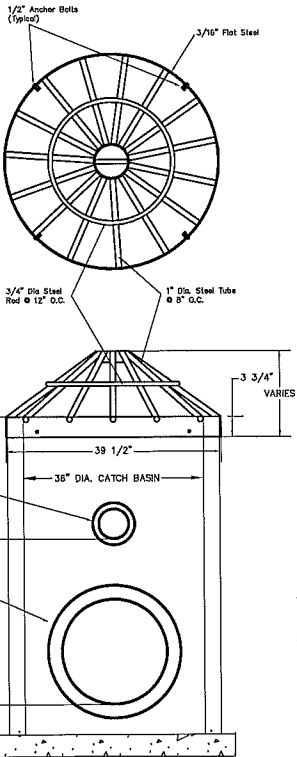
Revision: M.L.C. Checked by: XXX Date: 2-12-2014
 Drawn by: XXX Date: 2-12-2014
 Scale: 1" = 30'
 Title: Revise Project Title



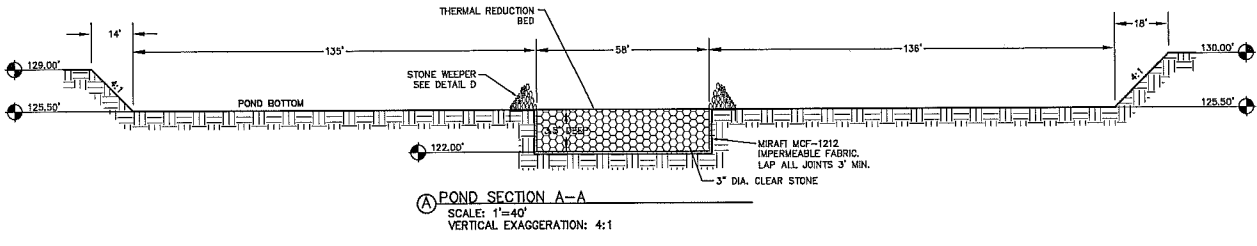
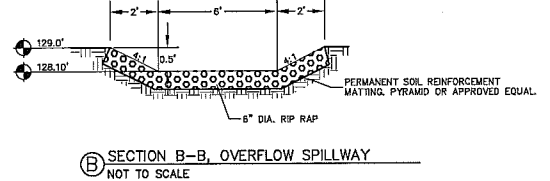
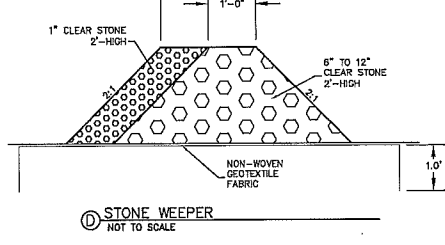
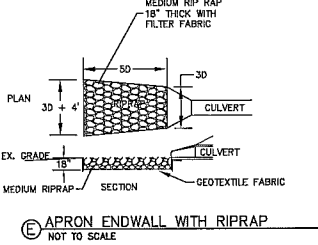
REVISION	DATE	BY
2-16-14		
MARK		
PROJECT TITLE		
ENGINEER	CHECKED BY	DATE
M.L.C.	XXX	2-12-2014
TECHNICIAN	XXX	
PROJECT NO.	114.0068.30	
PROJECT TITLE	3848 & 3864 MAPLE GROVE ROAD	
DESIGNER	MESHIP CROWE DESIGN	
DATE	2/12/2014	
SHEET NO.	C1.5	
TOTAL SHEETS	1	



NOTES:
 EACH GATE IS WIRE BRUSHED AND CLEANED THOROUGHLY PRIOR TO PAINTING
 EACH COAT IS AN OVERALL COAT EACH COAT IS ALLOWED TO DRY FOR 24 HOURS MIN.
 FIRST COAT: RUST-OLEUM X-50 RED BARE METAL PRIMER OR EQUAL
 SECOND COAT: RUST-OLEUM 850 ZINC CHROMATE PRIMER OR EQUAL
 THIRD COAT: RUST-OLEUM 1282 HIGH GLOSS AND METALLIC FINISH OR EQUAL
 GALVANIZED AND EPOXY COATED GATES ALSO AVAILABLE AS SPECIFIED
 PIPE GATES ARE ALSO AVAILABLE FOR APRON ENDWALLS



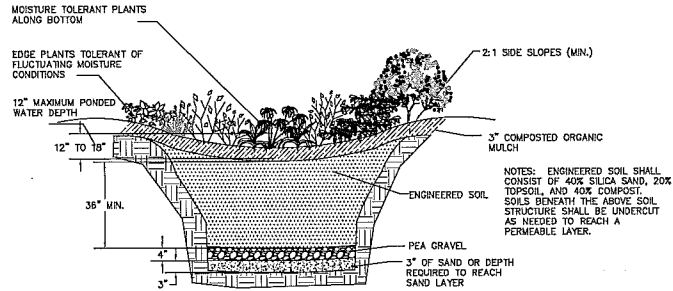
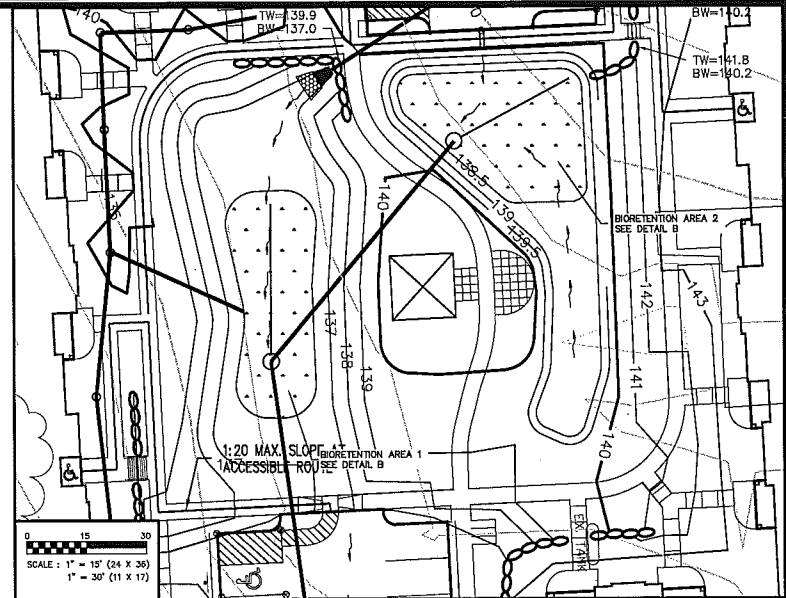
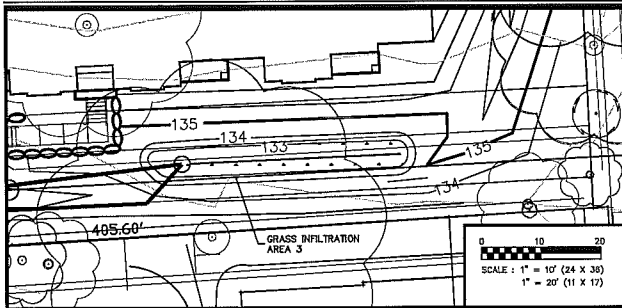
F POND 1 OUTLET DETAIL



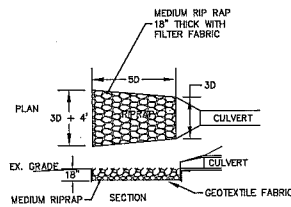
CITY OF MADISON, WISCONSIN
 3848 & 3864 MAPLE GROVE ROAD
 MADISON, WISCONSIN 53716
 608-268-6441 | www.snyderandassociates.com
 SNYDER & ASSOCIATES, INC.
 POND DETAILS



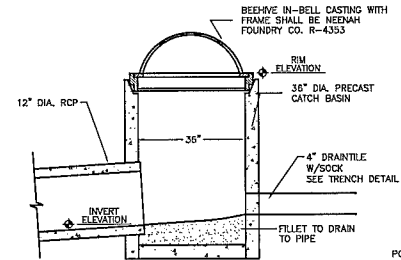
Project No: 114.0068.30
 Sheet C1.5



(B) BIORETENTION SECTION
NOT TO SCALE



(C) APRON ENDWALL WITH RIPRAP
NOT TO SCALE



	POND NO.	RIM ELEV. (FEET)	INVERT ELEV. (FEET)
BIORETENTION AREA 1		136.50	132.00
BIORETENTION AREA 2		139.00	134.75
INFILTRATION AREA 3		133.75	129.49

(A) POND/RAINGARDEN OUTLET DETAIL
NOT TO SCALE

REVISION	DATE	BY	CHK
2-16-14			

PROJECT TITLE: _____
 ENGINEER: M.L.C. Checked By: JXX
 DATE: 2-12-2014
 PROJECT NO: 114.0068.30
 SHEET: C1.6
 PROJECT LOCATION: Maple Grove Design Group 12014.06

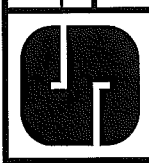
CITY of MADISON, WISC

3848 & 3864 MAPLE GROVE ROAD

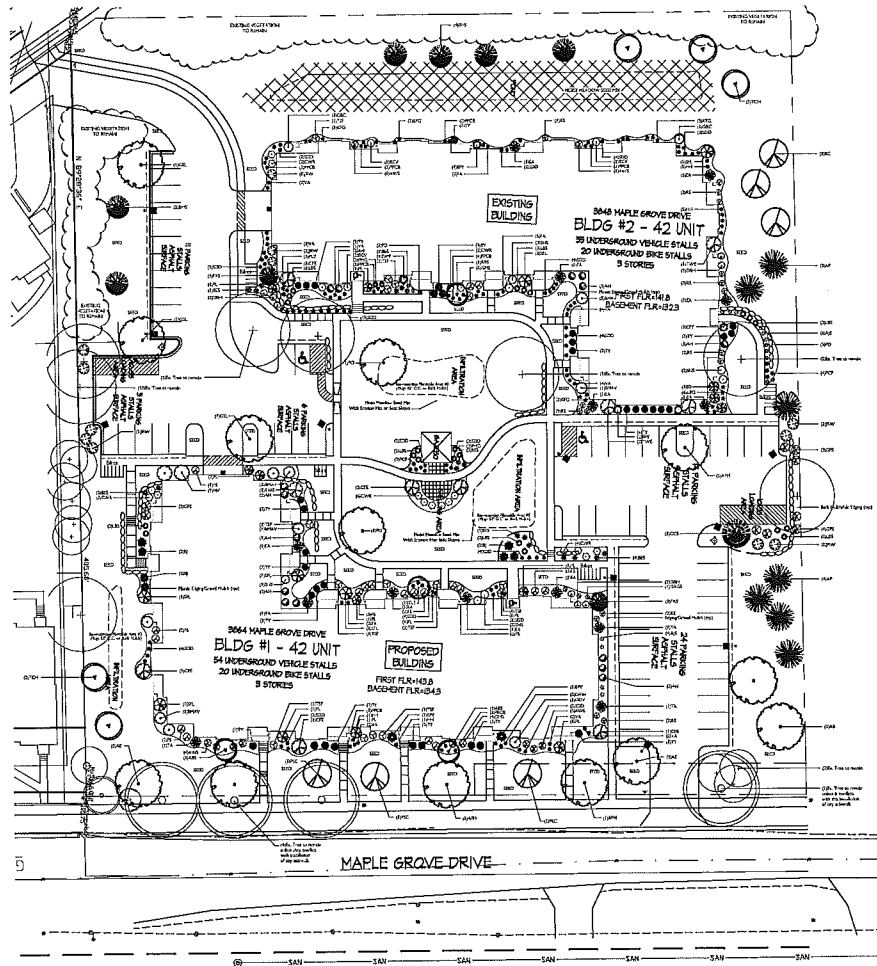
BIORETENTION AREA DETAILS

SNYDER & ASSOCIATES, INC.

5010 VOEGES ROAD
MADISON, WI 53718
608-268-0244 | www.snyderassoc.com



Project No: 114.0068.30
Sheet C1.6



Plant Material List

Quantity	Code Name	Scientific Name	Planting Size
3	ASZ	Asarum Hill Gardenbury	4" B&B
5	AE	Aucuba Elm	2" B&B
3	GSJ	Geometric Umbellifera Linden	3" T5
3	APR	Azara Parvula Maple	2" B&B
2	PO	Poa Oak	2" B&B
3	PLC	Pyra Spruce Crabapple	1 1/2" B&B
3	RC	Rubus Crataegus	1 1/2" B&B
5	TCH	Thuja Cooker Hawthorn	4" B&B

Quantity	Code Name	Scientific Name	Planting Size
7	AP	Aucuba Elm	5" B&B
4	BMS	Black Hills Spruce	7" B&B
7	BJ	Balsam Juniper	#1 CONT.
1	DMP	Dwarf Magnolia	12" POT
11	EA	Emerald Arborvitae	7" B&B
6	EPT	Emerald Peak Japanese Yew	4" B&B
2	FAS	Fax Adams Blue Spruce	5" B&B
1	GCS	Green Cabralis Spruce	5" B&B
35	TY	Taxus Yew	12" B&B
3	TA	Taxus American Arborvitae	4" B&B

Quantity	Code Name	Scientific Name	Planting Size
10	ASJ	Autumn Jay Sycamore (red 3/4)	#1 CONT.
18	BES	Mad-eyed Sycamore	#1 CONT.
3	DAW	Dawson Red Amber (white)	#1 CONT.
11	FA	Fossil Amber (red)	#1 CONT.
11	H41	Halepyna Holly (blue 12-24")	#1 CONT.
17	KKG	Kent Fragrant's Feather Red Oak	#1 CONT.
19	LBI	Lilac Shrub	#1 CONT.
23	PRCB	Prince Purple Coral Bark	#1 CONT.
8	FD	Purple Dogwood	#1 CONT.
10	PCJ	Purple Crape Myrtle	#1 CONT.
3	PHS	Purple Haze Spruce	#1 CONT.
16	SS	Scotch Spruce	#1 CONT.
43	SJD	Scotch Pine (light 18" H)	#1 CONT.
14	VA	Virginia Spruce (mopery)	#1 CONT.

Quantity	Code Name	Scientific Name	Planting Size
15	AH	Amelanchier Alnifolia	#1 CONT.
9	AW5	Amelanchier Winter Spruce	#1 CONT.
4	BCV	Baldy Cypripedium Amer. Oak Viburnum	#1 CONT.
8	EMW	Emory's Yellow Birch Viburnum	#1 CONT.
17	CWR	Cornus Winter Rose	#1 CONT.
6	GRE	Chicago Pine Winged Blackberry	#1 CONT.
3	DAGS	Delaware Golden Spruce	#1 CONT.
8	DEM	Dark Emerald Spruce	#1 CONT.
15	FS	Fraser Spruce	#1 CONT.
2	GBC	Glenn Black Chokeberry	#1 CONT.
7	GHS	Gold Heart Spruce	#1 CONT.
9	GSE	Golden Spruce	#1 CONT.
3	JD	Just Dogwood	#1 CONT.
1	JTJ	Japanese Tree Larch (H)	2" B&B
11	JW	Jan Red Wagon	#1 CONT.
3	HV	Hickory Viburnum	#1 CONT.
1	OVN	Osage Yellow Birch Viburnum	4" B&B
11	KL	Palish Larch	#1 CONT.
6	SL	Scotch Larch	#1 CONT.
2	DS	Downward Herring Spruce	#1 CONT.
13	TSP	Texas Spruce Flowering Spruce	#1 CONT.
4	TWE	Texas Wagon Blackberry	#1 CONT.

BIORETENTION AREAS PLANT LIST:

Grasses - 1/2"	Forbs - 1/2"	Shrub
130 SCOTTISH BROOM	45 LAVENDER HYSSOP	15 AH
217 FOX SEDGE	45 BLUE WILD INDIGO	9 AWS
217 DARK-GREEN BURRUSH	45 PALE PURPLE CONEFLOWER	4 BCV
	45 PURPLE CONEFLOWER	8 EMW
	45 SHREVEWOOD	17 CWR
	45 CARDINAL FLOWER	6 GRE
	45 SMOOTH FRONTSIDING	3 DAGS
	45 YELLOW CONEFLOWER	8 DEM
	45 STIFF BAC-LEAF SWEET	15 FS
	45 OHIO GOLDENROD	2 GBC
	45 RED-LEAF GOLDENROD	7 GHS
	45 STIFF GOLDENROD	9 GSE
	45 GOLDEN ALEXANDER	3 JD
		1 JTJ
		11 JW
		3 HV
		1 OVN
		11 KL
		6 SL
		2 DS
		13 TSP
		4 TWE

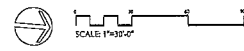
GENERAL NOTES

- Areas labeled "Bank Plant" require a mixture of shredded wood mulch spread to a 3" depth over pre-eroded.
- Individual trees and shrubs (grouped) located along perimeter of property as well as those found within base areas to include back yard and back porch (consisting of a mixture of mulched wood mulch spread to a minimum 3" depth (1" with back for stock protection).
- "Bank Edge" to be 1/2" Yellow Birch Shrub (black) or equivalent.
- Areas labeled "Street Plant" to receive 4-1/2" wood mulch spread to a 3" depth over 1/2" wood mulch.
- "Tree" areas shall be 6-8" mulch and seeded at a rate of 4 lbs. per 1,000 sq. ft.
- Areas labeled "Bank" shall receive a mixture of the following types:
 - 40% Palm Spruce
 - 20% Green Bagwood
 - 20% Native Dogwood
 - 20% Perennial Crossing Red Fence
- Plant beds adjacent to building foundation to be mulched with 1-1/2" diameter wood mulch spread to a 3-4" depth over 1/2" wood mulch.
- Re-vegetation areas to be covered by sod.

CITY OF MADISON	
LANDSCAPE POINTS REQUIREMENTS	10
Number of planting units	10
Number of 2" Pot. Cal. Trees Required	10
Number of Landscape Points Required	10

SOLUTION	PLANTING
1	Conifer Trees (2-3 1/2" @ 30 sp.)
2	Conifer Trees (4-6 1/2" @ 15 sp.)
3	Deciduous 8-10" @ 3 sp.
4	Evergreen 8-10" @ 3 sp.
5	Evergreen Tree (7-10" @ 15 sp.)
6	Deciduous 10-12" @ 3 sp. per 10 ft.
7	Evergreen 10-12" @ 3 sp. per 10 ft.
8	Average 10-12" @ 3 sp.
TOTAL POINTS 10	

TRESCAPE AND TYPICAL FOUNDATION PLANTINGS



3848 AND 3864 MAPLE GROVE DRIVE
MADISON, WISCONSIN

Checked By: MH/SS
 Drawn By: SVS
 9/16/05
 Revised: 12/01/05 JD
 Revised: 12/22/05 JD
 Revised: 1/5/06 JD
 Revised: 2/19/14 RS
 Revised:

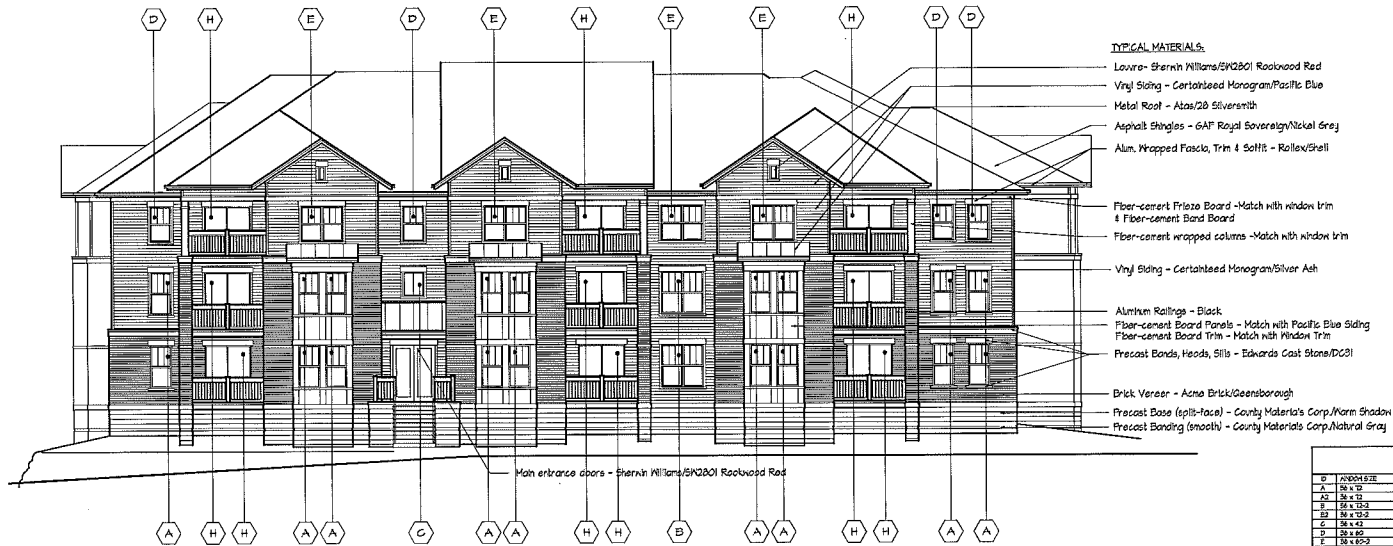
Job #

L1

This site plan was prepared for the use of the client and is not to be used for any other purpose without the written consent of The Tree Company. The Tree Company is not responsible for any errors or omissions in this plan or for any damage to property or injury to persons resulting from the use of this plan.

Consultant

Notes



TYPICAL MATERIALS:

- Louvro - Sherrin Williams/SK2001 Rockwood Red
- Vinyl Siding - CertaKote Monogram/Pacific Blue
- Metal Roof - Atlas/20 SilverSmith
- Asphalt Shingles - GAF Royal Sovereign/Nickel Gray
- Alum. Wrapped Fascia, Trim & Soffit - Kollen/Shell
- Fiber-cement Frieze Board - Match with window trim
- Fiber-cement Band Board
- Fiber-cement wrapped columns - Match with window trim
- Vinyl Siding - CertaKote Monogram/Silver Ash
- Aluminum Railings - Black
- Fiber-cement Board Panels - Match with Pacific Blue Siding
- Fiber-cement Board Trim - Match with Window Trim
- Precast Bands, Heads, Sills - Edwards Cast Stone/DC01
- Brick Veneer - Acme Brick/Greenborough
- Precast Base (split-face) - Conroy Materials Corp./Warm Shadow
- Precast Banding (smooth) - Conroy Materials Corp./Natural Gray

WINDOW SCHEDULE					
ID	ANNOUN SIZE	TYPE	EXPOSURE AREA	UNIT AREA	REMARKS
A	36" x 70"	DOUBLE HUNG	1232 S.F.	83 S.F.	WEATHER STRIP, VIDEOS DOOR OR APPROVED EQUAL
AZ	36" x 70"	ALUM. / P.C.PAN.	26" W S.P.	4.8 S.F.	10" W, 10" H - E
B	36" x 70"	DOUBLE HUNG	26" W S.P.	16.6 S.F.	
BT	36" x 70"	ALUM. / P.C.PAN.	26" W S.P.	16.6 S.F.	
C	36" x 43"	CASING	31" H S.P.	17.0 S.F.	
D	36" x 60"	DOUBLE HUNG	19" W S.P.	122 S.F.	
E	36" x 60"	DOUBLE HUNG	20" W S.P.	132 S.F.	
F	36" x 60"	FLUSH	8" W S.P.	17.4 S.F.	
H	33" x 84"	SLIDING PATIO	36" W S.P.	84.4 S.F.	
K	33" x 46"	SLIDING PATIO	26" W S.P.	20.81 S.F.	

NOTE: ALL PATIO DOORS MUST MEET ACCESSIBILITY REQUIREMENTS (30" MIN CLEAR OPENING REQD)
 GENERAL CONTRACTOR TO NOTIFY ARCHITECT OF SUBSTITUTIONS OF WINDOW / DOOR MANUFACTURER
 PRIOR TO ORDERING PRODUCT
 PROVIDE SAFETY GLAZING IN PATIO DOORS & OTHER DOORS / WINDOWS AS REQUIRED BY CODE.

SOUTH ELEVATION

1/8" = 1'-0"

Revisions
 Attention To SIP - February 14, 2014



WEST ELEVATION

1/8" = 1'-0"

Project Title

3864 Maple Grove Drive

Drawing Title
Elevations

Building #1

Project No.

0525

Drawing No.

A-2.1

This document contains confidential information. If you are not the intended recipient, you should not disseminate, distribute or copy this document. If you have received this document by mistake, please notify the sender immediately by e-mail. © 2014 KNOTHE & BRUCE ARCHITECTS, A LIMITED LIABILITY COMPANY OF WISCONSIN.

Contractor _____

Notes _____

Revisions
Alteration To SIP - February 16, 2014

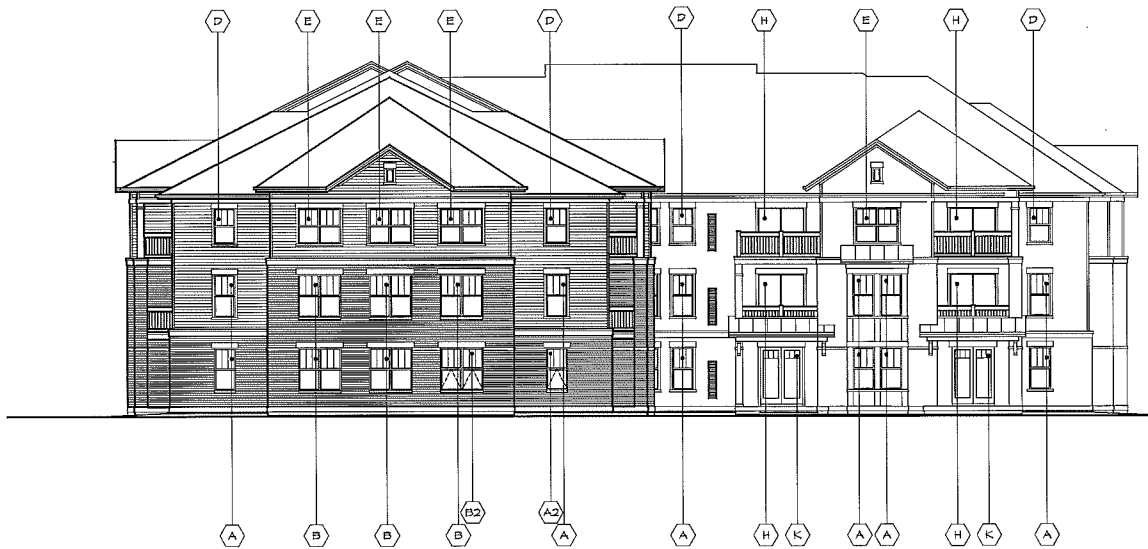
Project Title _____

3864 Maple Grove Drive
Drawing Title
Elevations

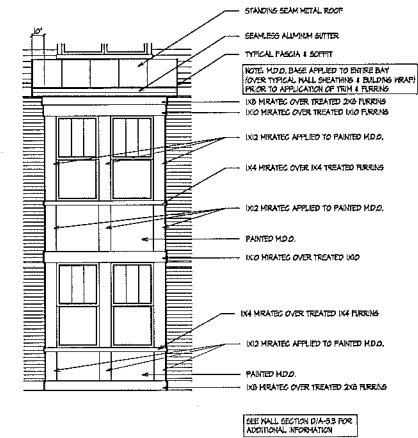
Building #1
Project No. _____ Drawing No. _____

0525 A-2.2

This document contains confidential information of KNOE & BRUCE ARCHITECTS. It is to be used only for the project and site for which it was prepared. Reproduction or distribution of this document without the written consent of KNOE & BRUCE ARCHITECTS is prohibited. KNOE & BRUCE ARCHITECTS is an Equal Opportunity Employer.



NORTH ELEVATION
1/8" = 1'-0"



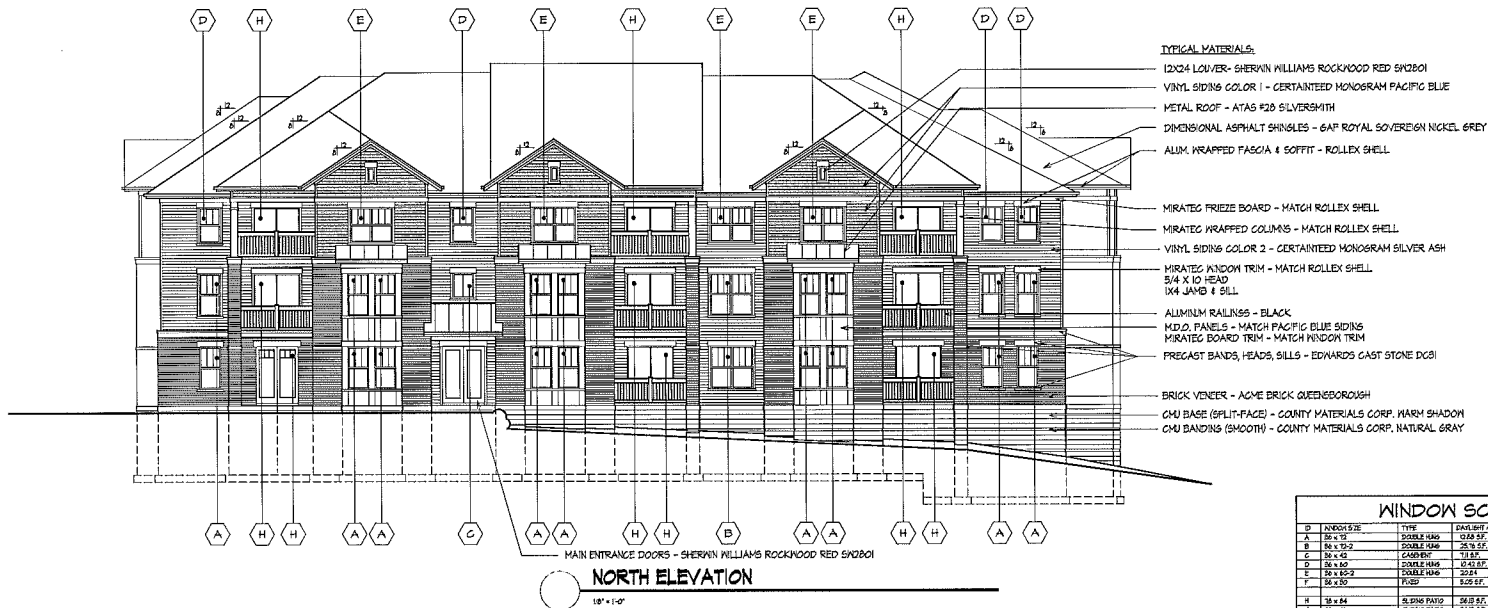
1 BAY FINISH DETAIL
1/8" = 1'-0"



EAST ELEVATION
1/8" = 1'-0"

Consultant

Notes



TYPICAL MATERIALS:

- 12X24 LOU/VER- SHERVIN WILLIAMS ROCKWOOD RED 5N201
- VINYL SIDING COLOR 1 - CERTAINEED MONOGRAM PACIFIC BLUE
- METAL ROOF - ATAS #28 SILVERSMITH
- DIMENSIONAL ASPHALT SHINGLES - 6A# ROYAL SOVEREIGN NICKEL GREY
- ALUM. WRAPPED FASCIA & SOFFIT - ROLLEX SHELL
- MIRATEC FRIEZE BOARD - MATCH ROLLEX SHELL
- MIRATEC WRAPPED COLUMNS - MATCH ROLLEX SHELL
- VINYL SIDING COLOR 2 - CERTAINEED MONOGRAM SILVER ASH
- MIRATEC PANDION TRIM - MATCH ROLLEX SHELL
- 5/4 X 10 HEAD
- 1X4 JAMB & SILL
- ALUMINUM RAILINGS - BLACK
- M.D. PANELS - MATCH PACIFIC BLUE SIDING
- MIRATEC BOARD TRIM - MATCH PANDION TRIM
- PRECAST BANDS, HEADS, SILLS - EDWARDS CAST STONE D601
- BRICK VENEER - ACME BRICK QUEENSBOROUGH
- CMU BASE (SPLIT-FACE) - COUNTY MATERIALS CORP. MARM SHADON
- CMU BANDING (SMOOTH) - COUNTY MATERIALS CORP. NATURAL GRAY

MAIN ENTRANCE DOORS - SHERVIN WILLIAMS ROCKWOOD RED 5N201

NORTH ELEVATION

1/8" = 1'-0"

WINDOW SCHEDULE					
ID	INCHES/FEET	TYPE	GLASS AREA	VECT AREA	EDWARDS
A	36" x 15"	DOUBLE HUNG	216.0 SF	43.5 SF	NOVARE FIELD VISION 2000 OR APPROVED EQUAL
B	36" x 17'-2"	DOUBLE HUNG	25.5 SF	8.2 SF	VINYL LHM - E
C	36" x 45"	CASING	11.8 SF	27.5 SF	
D	36" x 60"	DOUBLE HUNG	11.4 SF	5.2 SF	
E	36" x 60'-2"	DOUBLE HUNG	10.2 SF	10.4 SF	
F	36" x 50"	FIXED	3.9 SF	3.1 SF	
G	36" x 64"	SLIDING PATIO	26.9 SF	0.24 SF	
H	36" x 48"	SLIDING PATIO	36.9 SF	0.44 SF	
I	36" x 48"	SLIDING PATIO	28.4 SF	0.35 SF	
J	36" x 48"	SLIDING PATIO	28.4 SF	0.35 SF	
K	36" x 48"	SLIDING PATIO	28.4 SF	0.35 SF	

NOTE: ALL PATIO DOORS MUST MEET ACCESSIBILITY REQUIREMENTS (SEE VICE CLEAR OPENING REQ'D)
 GENERAL CONTRACTOR TO NOTIFY ARCHITECT OF SUBSTITUTIONS OF WINDOW / DOOR MANUFACTURER
 PRIOR TO ORDERING PRODUCTS
 PROVIDE SAFETY GLASS IN PATIO DOORS & OTHER DOORS / WINDOWS AS REQUIRED BY CODE.



EAST ELEVATION

1/8" = 1'-0"

Revisions
 Preliminary Set - January 26, 2006
 Issued For Construction - March 1, 2006
 Revised Construction Issue - March 23, 2006

Project Title

3848 Maple Grove Drive

Drawing Title
Elevations

Building #2

Project No.

0525

Drawing No.

A-2.1

This drawing is the property of KNOTHE & BRUCE ARCHITECTS and shall remain the property of KNOTHE & BRUCE ARCHITECTS. It is to be used only for the project and location specified on the title block. No part of this drawing may be reproduced, stored in a retrieval system, or transmitted in any form or by any means, electronic, mechanical, photocopying, recording, or by any information storage and retrieval system, without the prior written permission of KNOTHE & BRUCE ARCHITECTS.

Coordinate _____

Notes _____

Revisions
Preliminary Set - January 26, 2006
Issued For Construction - March 1, 2006
Revised Construction Issue - March 23, 2006
Alteration To SIP - February 19, 2014

Project Title _____

3848 Maple Grove Drive

Drawing Title

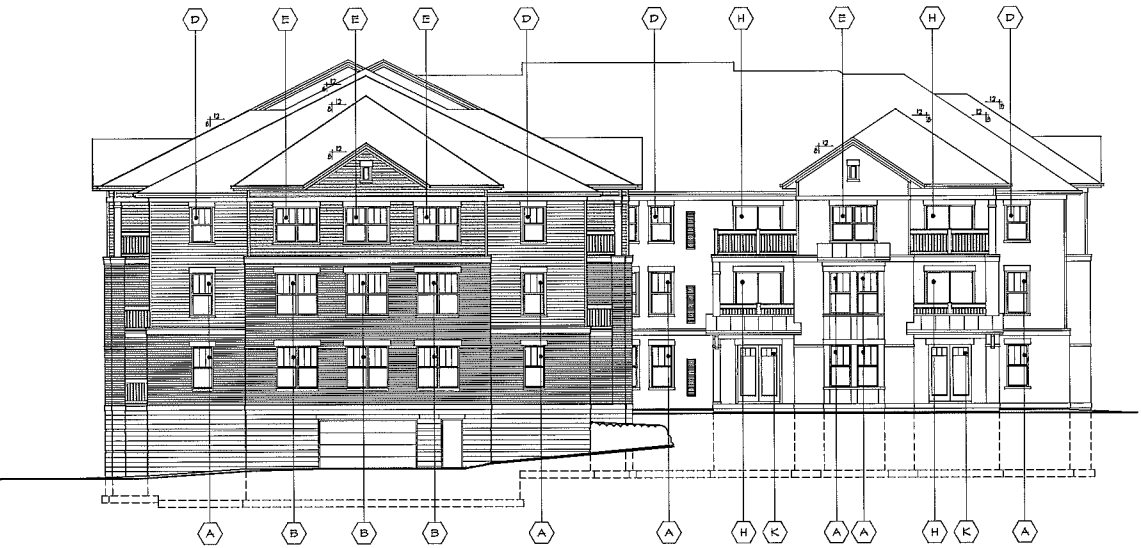
Elevations

Building #2

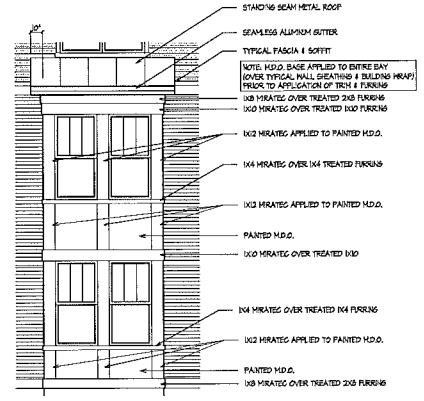
Project No. _____ Drawing No. _____

0525 A-2.2

The information contained herein is the property of KNOTHE & BRUCE ARCHITECTS. It is to be used only for the project and location specified. It is not to be reproduced, stored in a retrieval system, or transmitted in any form or by any means, electronic, mechanical, photocopying, recording, or by any information storage and retrieval system, without the prior written permission of KNOTHE & BRUCE ARCHITECTS.



SOUTH ELEVATION
1/8" = 1'-0"



BAY FINISH DETAIL
1/4" = 1'-0"

- STANDARD BEAM METAL ROOF
- SEAMLESS ALUMINUM GUTTER
- TYPICAL FASCIA & SOFFIT
- NOTE: M.D.O. BASE APPLIED TO ENTIRE BAY (LOWER TYPICAL WALL CLADDING & BUILDING WRAP) PRIOR TO APPLICATION OF TRIM & FINISHES
- 1/8" MHRATES OVER TREATED 2x8 FURRING
- 1/4" MHRATES OVER TREATED 1x4 FURRING
- 1/2" MHRATES APPLIED TO PAINTED M.D.O.
- 1/4" MHRATES OVER 1x4 TREATED FURRING
- 1/2" MHRATES APPLIED TO PAINTED M.D.O.
- PAINTED M.D.O.
- 1/8" MHRATES OVER TREATED 1x4
- 1/4" MHRATES OVER TREATED 1x4 FURRING
- 1/2" MHRATES APPLIED TO PAINTED M.D.O.
- PAINTED M.D.O.
- 1/8" MHRATES OVER TREATED 2x8 FURRING

SEE WALL SECTION BUA-53 FOR ADDITIONAL INFORMATION



WEST ELEVATION
1/8" = 1'-0"