

**LOCATION MAP**

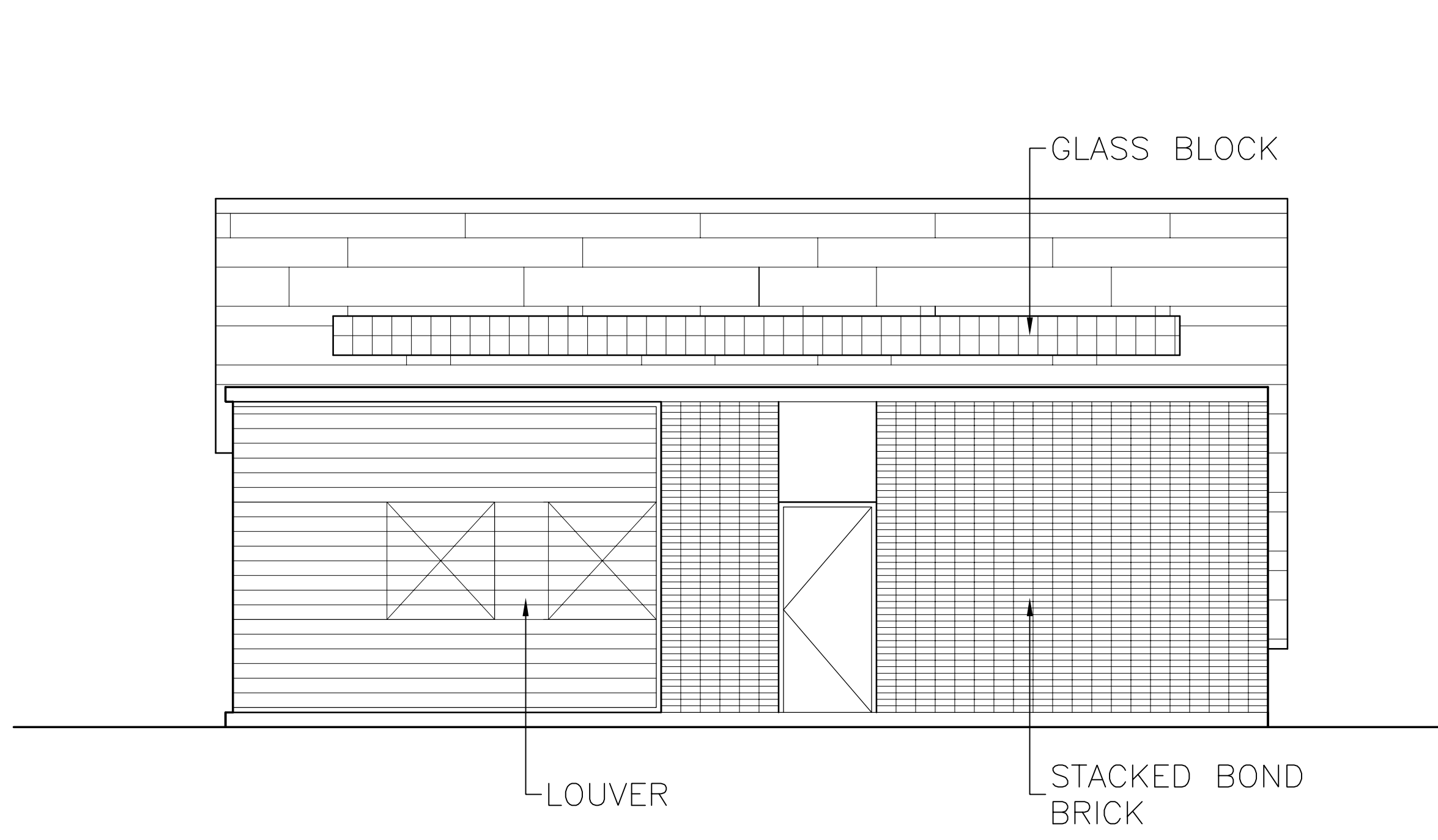
**3900 East Washington Avenue**

**MADISON WELL NO. 15 VOC REMOVAL  
MADISON WATER UTILITY  
DANE COUNTY, WISCONSIN**



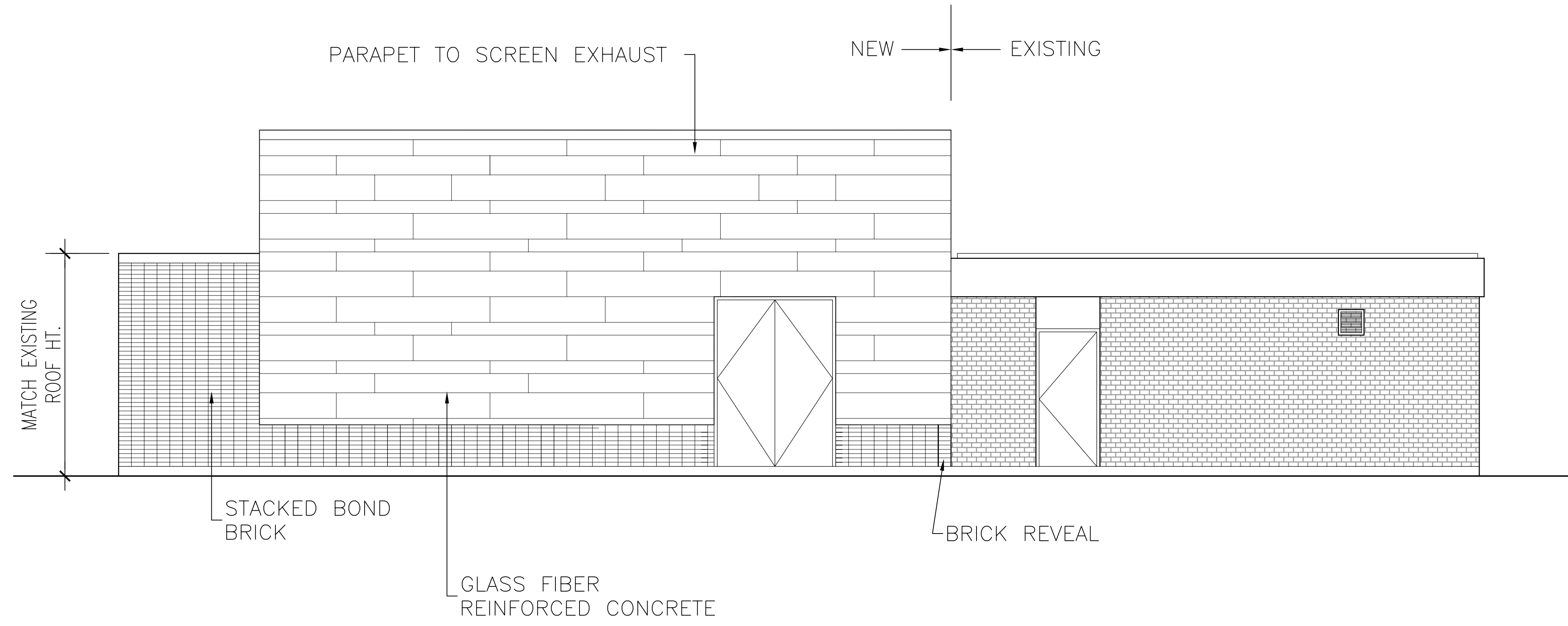
**FIGURE 1  
1020.066**





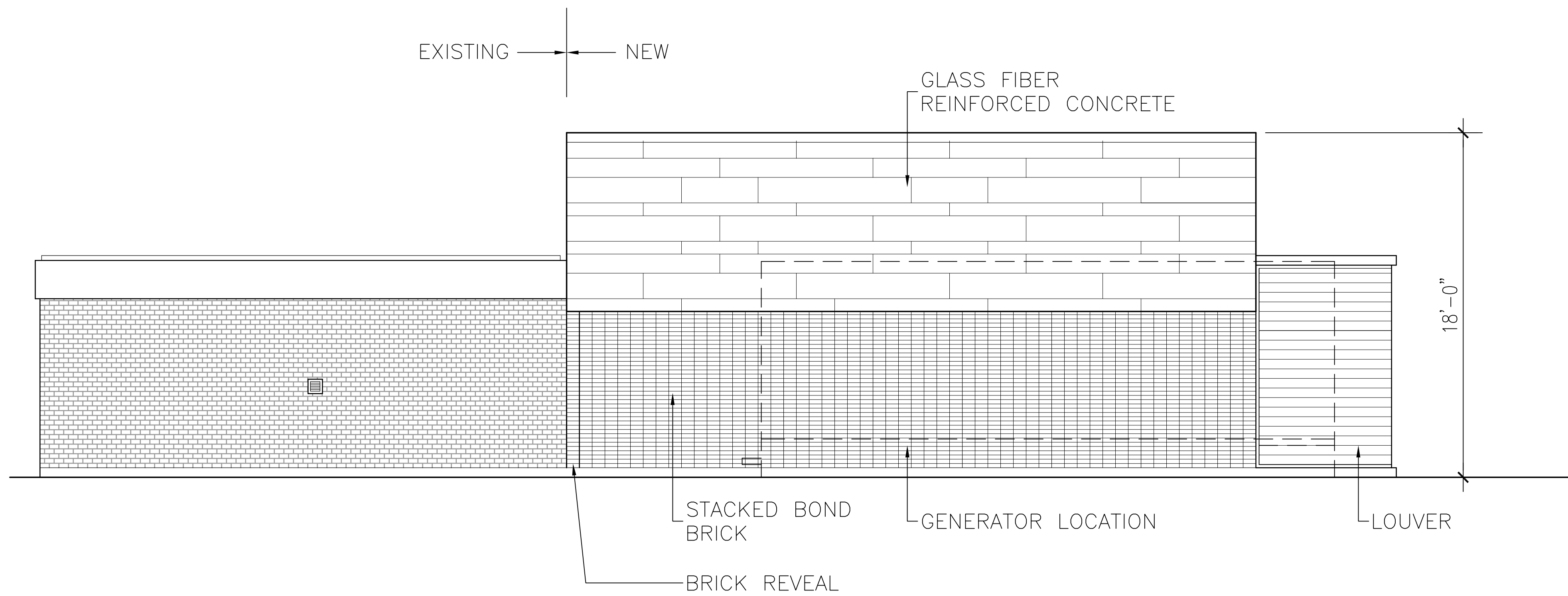
**NORTH EAST ELEVATION**

1/4" = 1'-0"



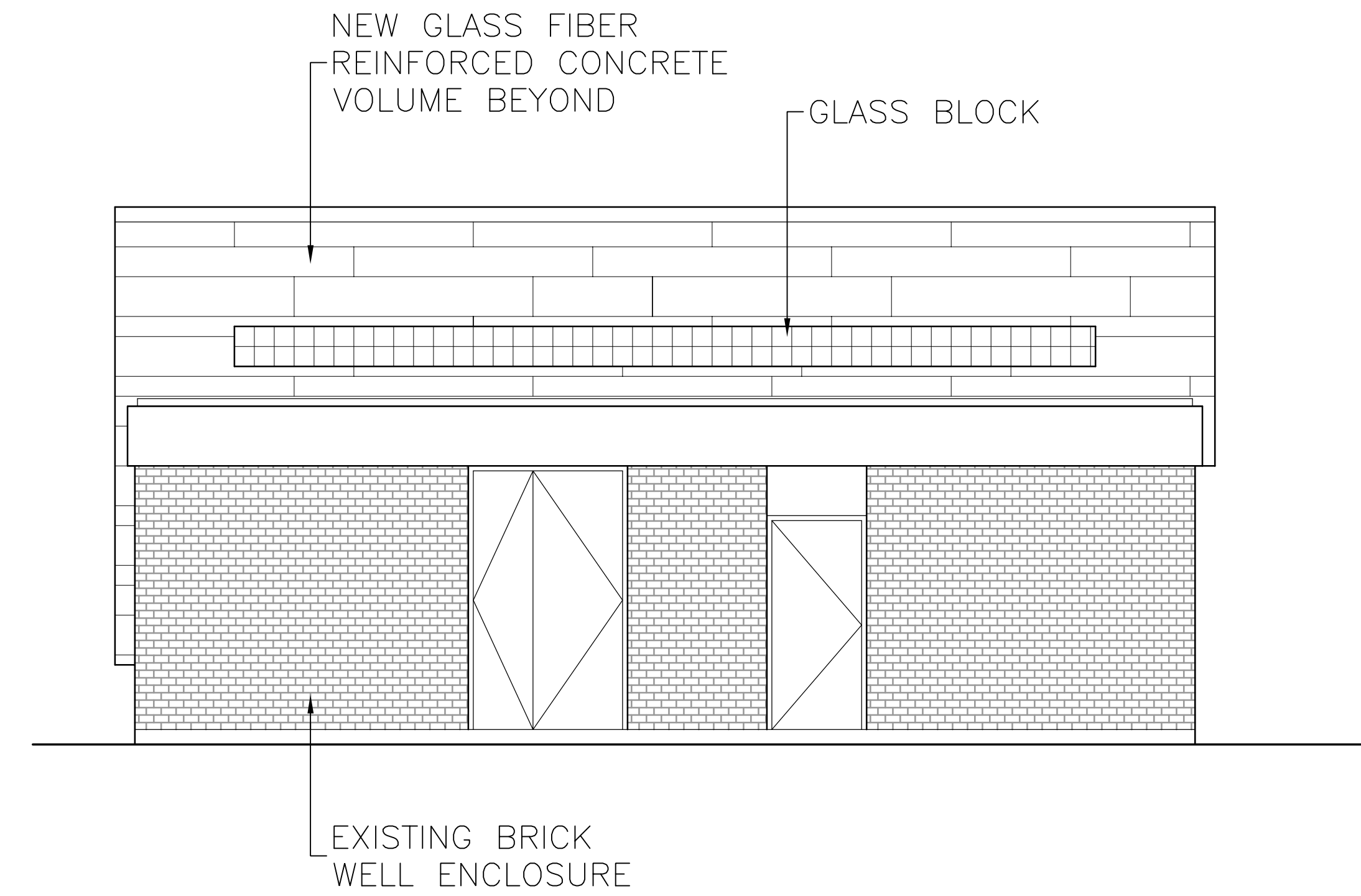
**NORTH WEST ELEVATION**

1/4" = 1'-0"



**SOUTH EAST ELEVATION**

1/4" = 1'-0"

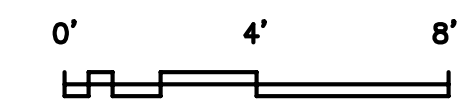


**SOUTH WEST ELEVATION**

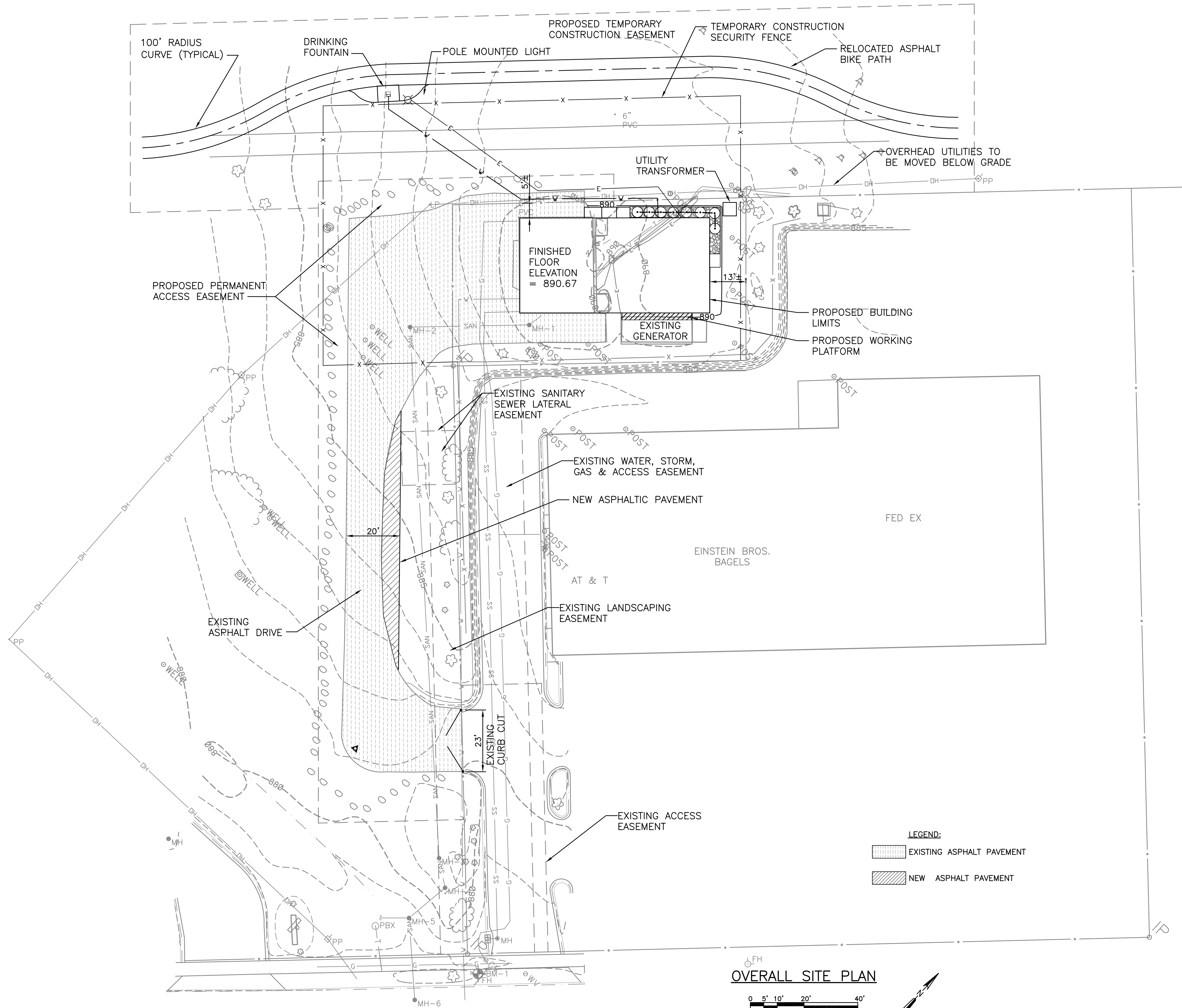
1/4" = 1'-0"

**Building Elevations**

Madison Well #15 | 3900 E. Washington  
April 18, 2012



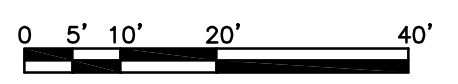
**Potter Lawson**  
Success by Design



SITE AREA: 6600 SF  
0.15 AC

- LEGEND:**
- EXISTING ASPHALT PAVEMENT
  - NEW ASPHALT PAVEMENT

OVERALL SITE PLAN

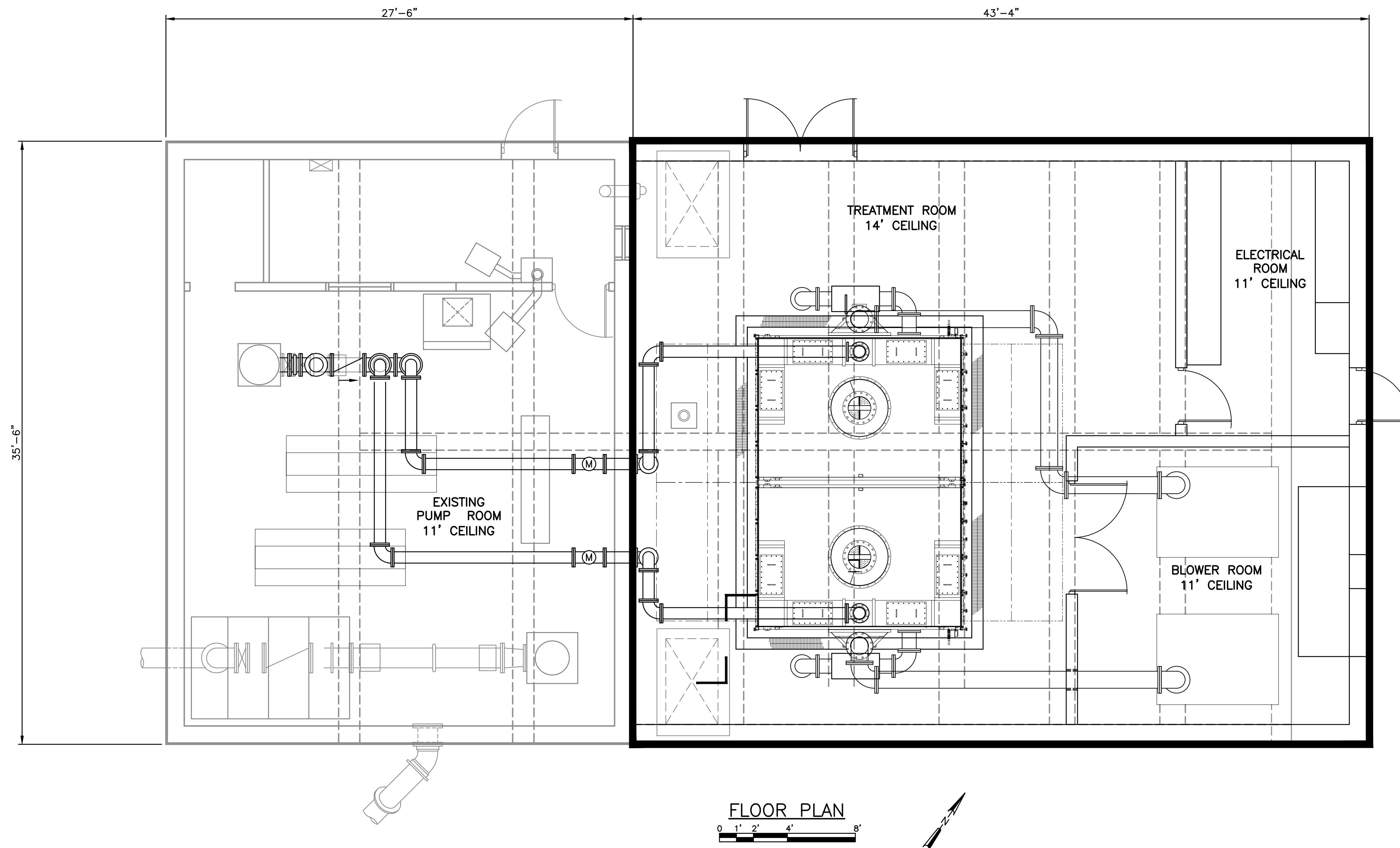


NO.	REVISIONS	DATE:

**OVERALL SITE PLAN**  
 MADISON WELL NO. 15  
 VOC REMOVAL  
 MADISON WATER UTILITY  
 DANE COUNTY, WISCONSIN

**JOB NO.**  
1020.066  
**PROJECT MGR.**  
ANDY MULLENDORE





**BUILDING SQUARE FOOTAGE:**

EXISTING: 976 SF  
 ADDITION: 1540 SF  
 TOTAL: 2516 SF

NO.	REVISIONS	DATE:

**FLOOR PLAN**  
 MADISON WELL NO. 15  
 VOC REMOVAL  
 MADISON WATER UTILITY  
 DANE COUNTY, WISCONSIN

**JOB NO.**  
1020.066

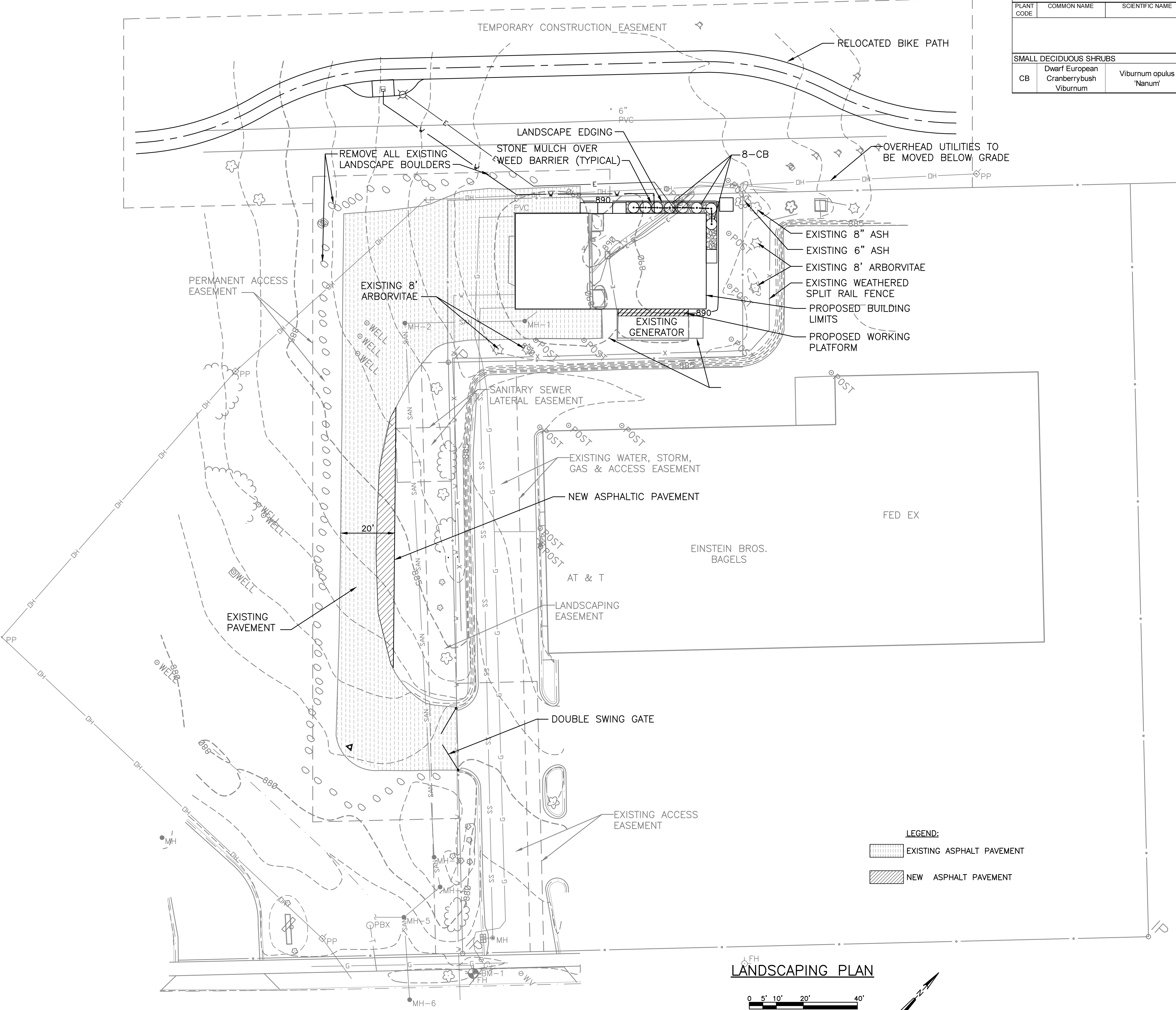
**PROJECT MGR.**  
ANDY MULLENDORE



**SHEET**  
2

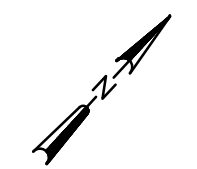
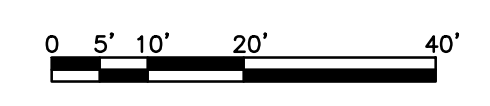
3900 E. WASHINGTON AVE.

PLANT CODE	COMMON NAME	SCIENTIFIC NAME	AVG. MATURE HEIGHT	SIZE WHEN PLANTED	ROOT ZONE MODE	MINIMUM SIZE				FERT. PACK. REQ'D	MULCH RING DIA.
						MIN. BALL OR POT		MIN. HOLE SIZE			
						MIN. CONT. SIZE	MIN. CONT. DEPTH	MIN. HOLE DIA.	MIN. HOLE DEPTH		
CB	Dwarf European Cranberrybush Viburnum	Viburnum opulus 'Nanum'	24"	20" HT	POT	12"	9"	28"	9"	1	Bed



- LEGEND:**
- EXISTING ASPHALT PAVEMENT
  - NEW ASPHALT PAVEMENT

LANDSCAPING PLAN



DATE:	NO.	REVISIONS

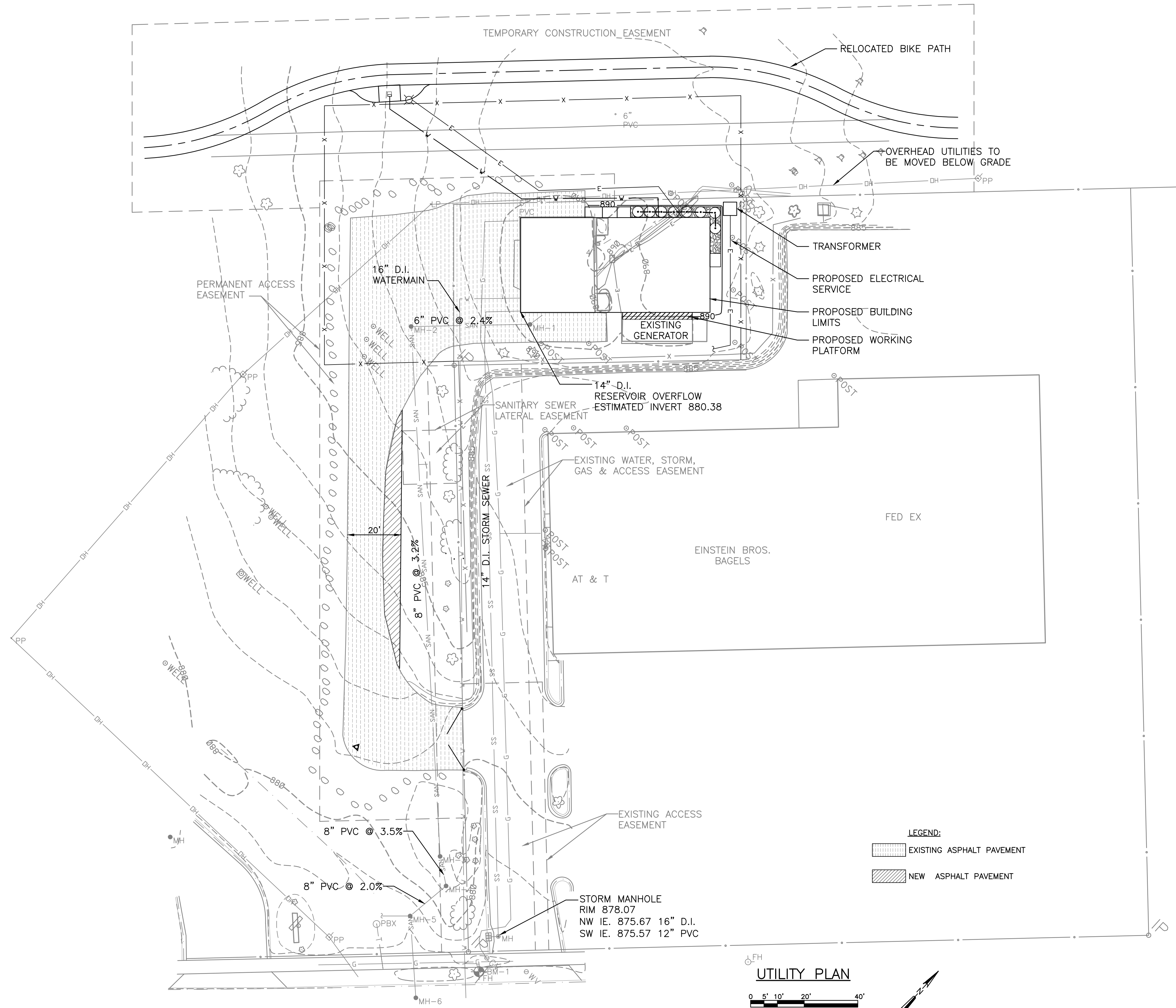
**LANDSCAPING PLAN**  
 MADISON WELL NO. 15  
 VOC REMOVAL  
 MADISON WATER UTILITY  
 DANE COUNTY, WISCONSIN

**JOB NO.**  
1020.066  
**PROJECT MGR.**  
ANDY MULLENDORE



**SHEET**  
3

3900 E. WASHINGTON AVE.

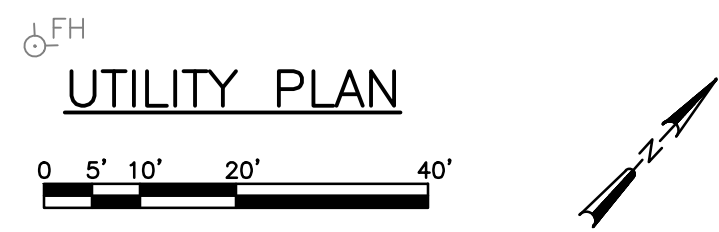


**SANITARY MANHOLE NOTES:**

MH-1	RIM 890.27
	INVERT N 882.87 4" PVC
	INVERT SW 882.82 6" PVC
MH-2	RIM 887.2
	INVERT NE 878.80 6" PVC
	INVERT SE 878.80 8" PVC
MH-3	RIM 881.65
	INVERT NW 872.65 8" PVC
	INVERT SE 872.62 8" PVC
MH-4	RIM 881.35
	INVERT NW 872.27 8" PVC
	INVERT S 872.07 8" PVC
	INVERT N 872.07 8" CLAY
MH-5	RIM 878.22
	INVERT N 868.47 8" PVC
	INVERT SE 866.72 8" PVC
	INVERT SW 866.67 8" PVC

**LEGEND:**

	EXISTING ASPHALT PAVEMENT
	NEW ASPHALT PAVEMENT



DATE:	
REVISIONS	
NO.	

**UTILITY PLAN**  
**MADISON WELL NO. 15**  
**VOC REMOVAL**  
**MADISON WATER UTILITY**  
**DANE COUNTY, WISCONSIN**

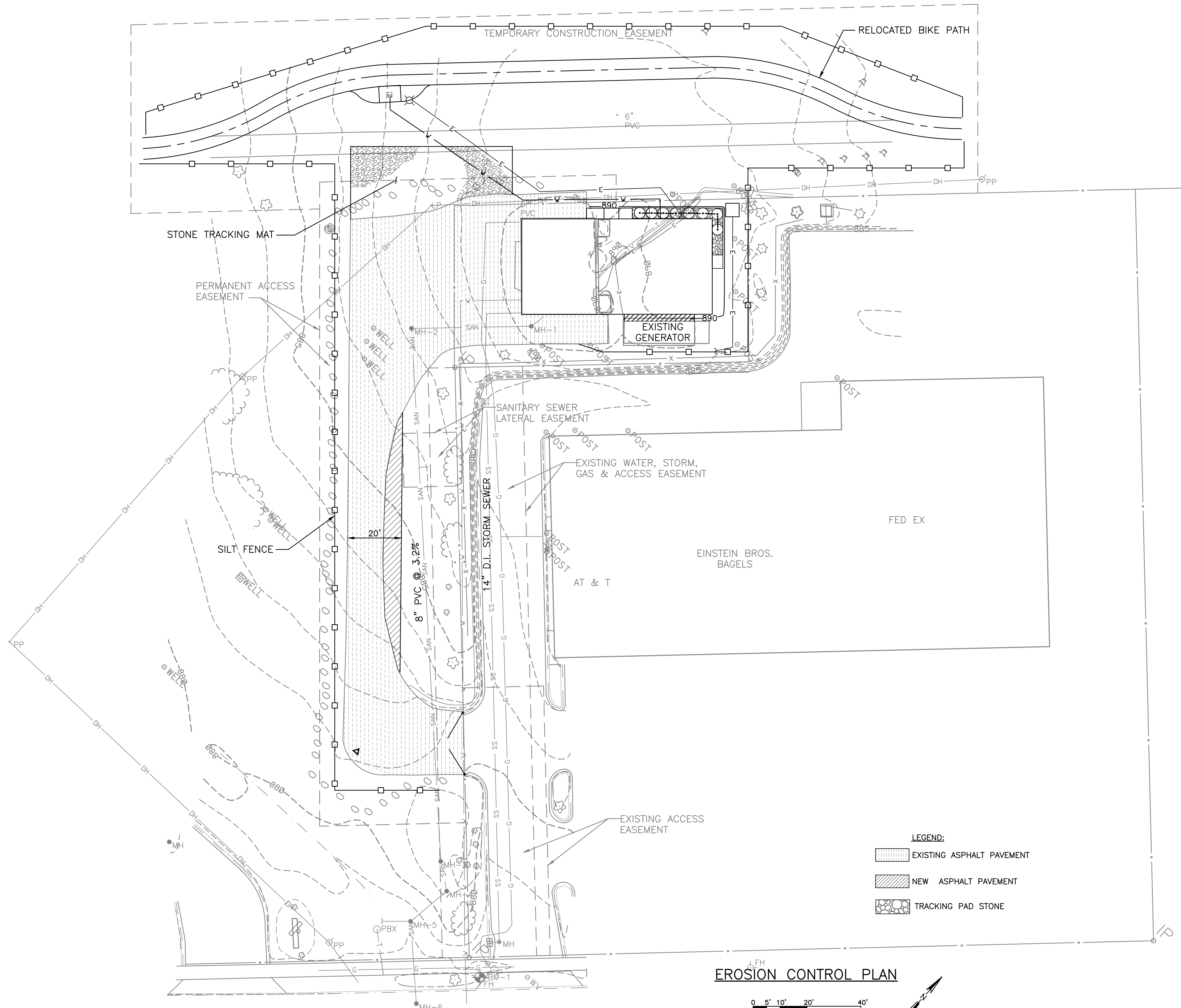
**JOB NO.**  
1020.066  
**PROJECT MGR.**  
ANDY MULLENDORE



**SHEET**  
**4**

3900 E. WASHINGTON AVE.





EROSION CONTROL PLAN

NO.	REVISIONS	DATE:

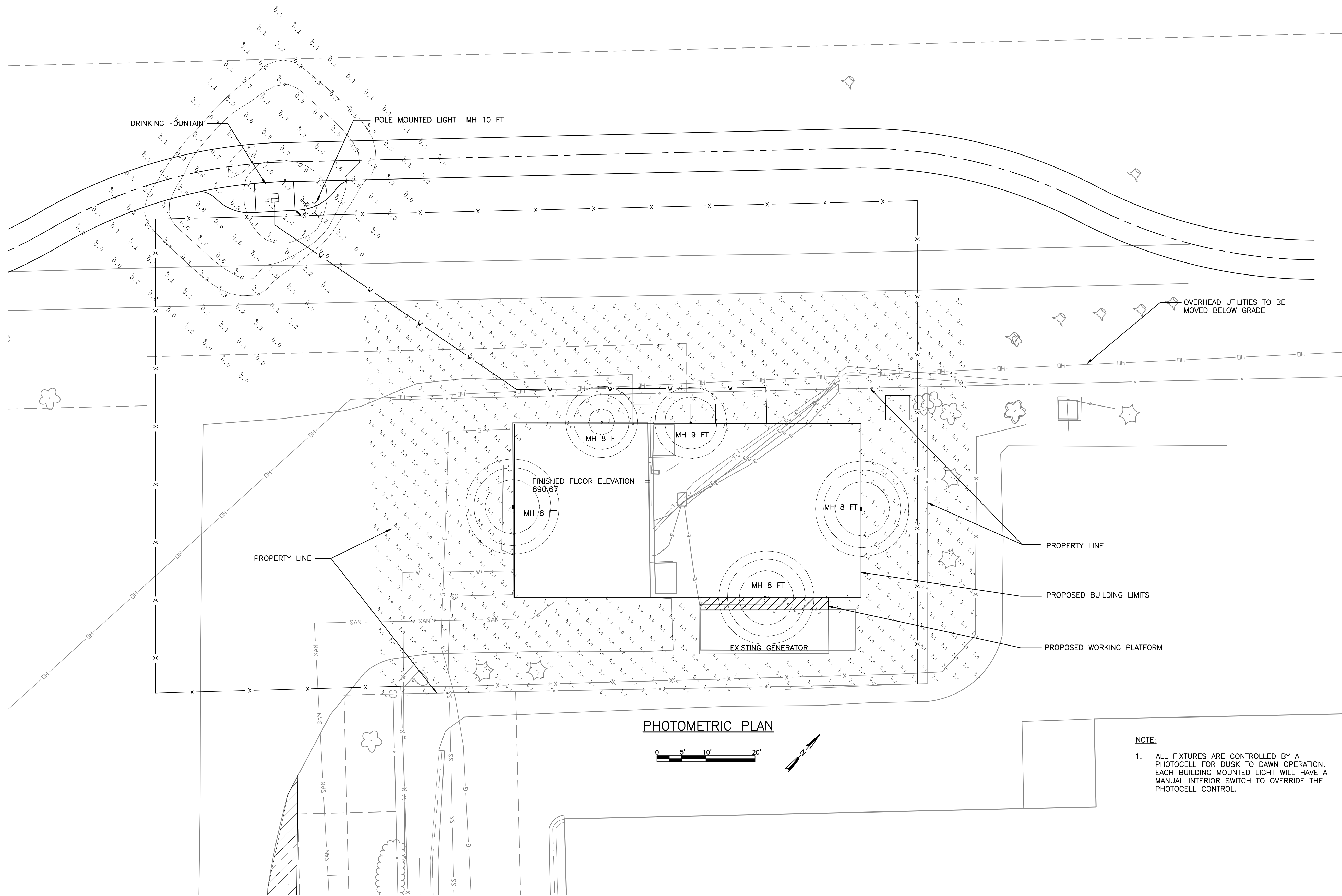
**EROSION CONTROL PLAN**  
 MADISON WELL NO. 15  
 VOC REMOVAL  
 MADISON WATER UTILITY  
 DANE COUNTY, WISCONSIN

**JOB NO.**  
1020.066  
**PROJECT MGR.**  
ANDY MULLENDORE



**SHEET**  
5

3900 E. WASHINGTON AVE.



**PHOTOMETRIC PLAN**

**NOTE:**  
 1. ALL FIXTURES ARE CONTROLLED BY A PHOTOCELL FOR DUSK TO DAWN OPERATION. EACH BUILDING MOUNTED LIGHT WILL HAVE A MANUAL INTERIOR SWITCH TO OVERRIDE THE PHOTOCELL CONTROL.

NO.	REVISIONS	DATE:

**PHOTOMETRIC PLAN**  
 MADISON WELL NO. 15  
 VOC REMOVAL  
 MADISON WATER UTILITY  
 DANE COUNTY, WISCONSIN

**JOB NO.**  
 1020.066  
**PROJECT MGR.**  
 ANDY MULLENDORE



**SHEET**  
 6

3900 E. WASHINGTON AVE.

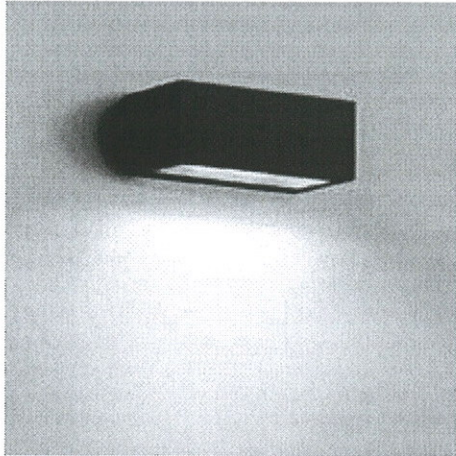


# LUMINAIRE SPECIFICATION



PROJECT : Madison well 15 DATE : \_\_\_\_\_  
 LOCATION : Building Mounted Light  
 QUANTITY : \_\_\_\_\_ NOTE : \_\_\_\_\_

IP65 : Suitable for Wet Locations



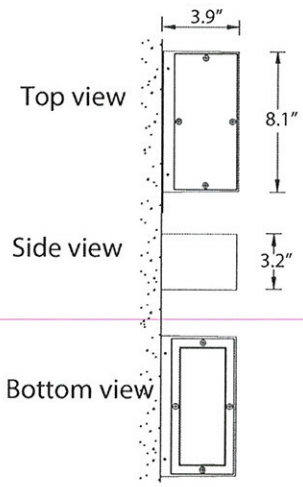
## U31611-LED

### Gino 4 rectangular wall down light

#### Product Type

Wall mounted luminaires with upward and downward light distributions. Ideally suited to illuminate the wall and surfaces in front of wall and for light accents on vertical surfaces using LED or compact fluorescent lamps. Can be mounted in an up or downward light application. Dark sky compliant when mounted in a downward light configuration.

Low copper content corrosion resistant die-cast aluminum frame and body. Stainless steel screws. Durable silicone rubber gasket and impact resistant toughened glass diffuser. The luminaire is treated with a chemical chromated protection before powder coating, ensuring high corrosion resistance. Integral control gear. Anodized high purity 95% reflective aluminum reflector. As an option the glass lens can be lightly frosted to hide lamp image. The Gino can also be supplied in a LED version: Contact factory for more information



#### Physical Data

Length: 8.1"  
 Height: 3.2"  
 Weight: 4.4 lbs

#### Lamp

10w White LED 500 Lm

(For More Lamp options please Consult the Catalogue, Website or Contact The Ligman Lighting Factory)

#### Voltage (Please Specify)

120V  
 277V  
 Other \_\_\_\_\_

#### Color (Please Specify)

01-Black - RAL 9011       02- Dark Grey - RAL 7043  
 03-White - RAL 9003       04 - Metallic Silver - RAL 9006  
 05-Matt Silver - RAL 9006       07- Custom - RAL \_\_\_\_\_  
 06-Bronze -RAL 6014

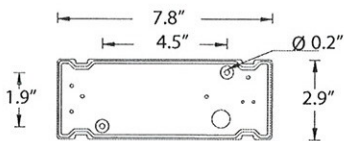
#### Note

- Mounts over a horizontally installed single gang junction box  
 - Integral Electronic control gear.

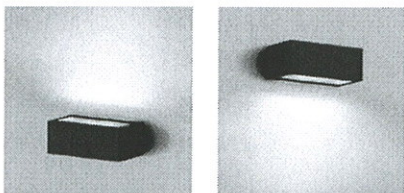
#### Option (Please Specify)

F - Lightly Frosted Lens

NOTE : Complies with Dark Sky Requirements when mounted in a downward light configuration.



Mounting detail



For mounting in upward or downward lighting positions

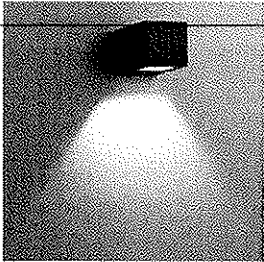


Head Office:  
 3302 NW 211th Terrace  
 Hillsboro,  
 Oregon  
 97125  
 USA

Tel: 503-645-0500  
 Fax: 503-645-8100  
 Email: info@ligmanlightingusa.com  
 Website: www.ligmanlightingusa.com

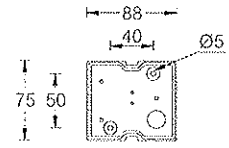
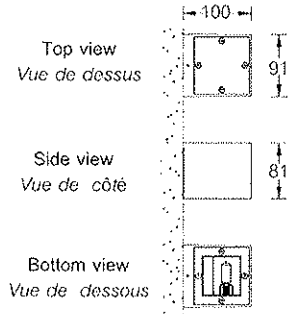
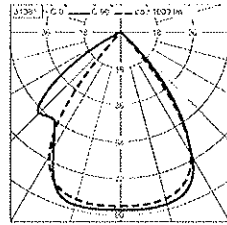
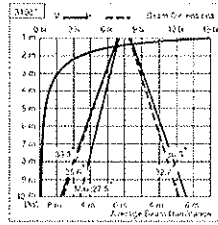


Gino 2

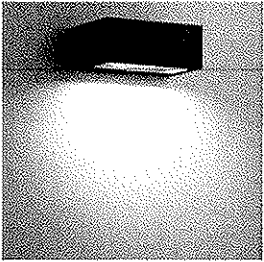


31081

Model No. <i>Modèle n°</i>	Lamp <i>Lampe</i>	Holder <i>Douille</i>	Lumen <i>Lumen</i>	Weight <i>Poids</i>
31081	QT14 40w.220-230v.	G9	460	0.9 kg.



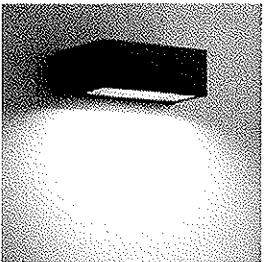
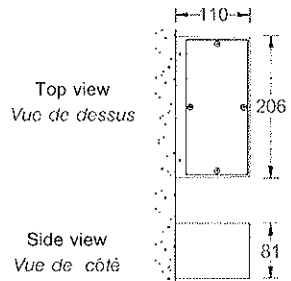
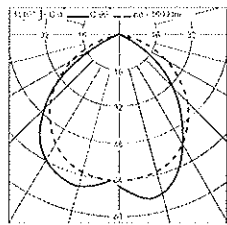
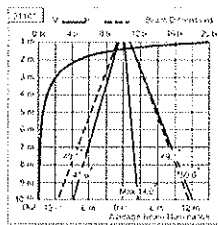
Mounting detail  
*Instructions de montage*



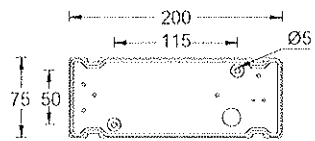
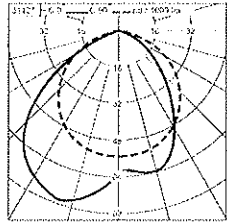
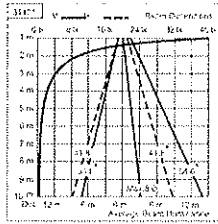
31101

Gino 4,6

Model No. <i>Modèle n°</i>	Lamp <i>Lampe</i>	Holder <i>Douille</i>	Lumen <i>Lumen</i>	Weight <i>Poids</i>
31101	TC-D 13w.	G24d-1	900	1.6 kg.
31121	TC-D 26w.	G24d-3	1800	2.0 kg.



31121



Mounting detail  
*Instructions de montage*



**DESCRIPTION**

The Ridgeview™ LED area roadway luminaire is the compact, efficient, economical approach to LED area lighting. A pure blend of traditional form and LED efficiency; Ridgeview provides functional, low-profile design with excellent operating performance. Patented modular LightBAR™ technology delivers uniform and energy-conscious illumination to parking lots and perimeter security lighting applications.

Catalog #	Drinking Fountain	Type	
Project	Fountain	Date	
Comments	Madison Well 15		
Prepared by			

**SPECIFICATION FEATURES**

**Construction**

Rugged one-piece, die-cast aluminum housing secures the thermally conductive LED panel and electrical chamber. Low profile, 3G vibration rated compact design minimizes wind load requirements. Extruded aluminum frame secured with stainless steel hardware confines the LightBAR panel to the thermally conductive housing. The unique glide bracket LightBAR panel allows for easy access to the electrical chamber.

**Optics**

Choice of twelve (12) patented, high efficiency AccuLED Optics™ manufactured from injection-molded acrylic. Optics are precisely designed to shape the distribution maximizing efficiency and application spacing. AccuLED optics create consistent distributions with the scalability to

meet customized application requirements. Offered standard in 4000°K (+/- 275K) CCT and nominal 70 CRI.

**Electrical**

LED drivers are hard-mounted to die-cast aluminum back casting for optimal heat sinking and operation efficiency. 120-277V 50/60HZ, 347V 60HZ, 480V 50/60 HZ operation. Shipped standard with Cooper Lighting proprietary circuit module designed to withstand 10kV of transient line surge. 50,000 hours of life with >70% lumen maintenance. The Ridgeview LED luminaire is suitable for operating temperatures from -30°C to 40°C. LightBARs feature IP66 enclosure rating.

**Mounting**

Cast aluminum 6" arm includes bolt guides allowing for easy

position of the fixture during installation to pole. Standard single carton packaging of housing, square pole arm and round pole adapter provide contractor-friendly installation. Wall mount models feature a cast aluminum arm that is directly mounted to a 4" supplied wall plate secured with set screws.

**Finish**

Components finished in a 5-stage SuperTGIC polyester powder coat paint, 2.5 mil nominal thickness for superior protection against fade and wear. Standard color is bronze. Optional colors include black, grey, white, dark platinum and graphite metallic. RAL and custom color matches available.

**Warranty**

Ridgeview features a five-year limited warranty.

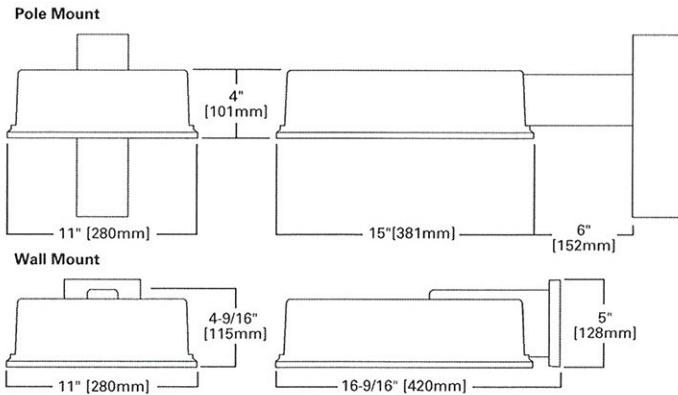


**RV LED  
RIDGEVIEW  
AREA/ROADWAY**

1 - 4 LightBARs  
Solid State LED

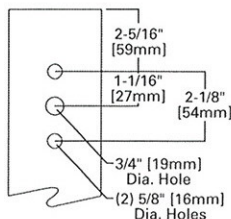
AREA LUMINAIRE

**DIMENSIONS (SITE)**



**DRILLING PATTERN (SITE)**

**TYPE "R"**



**SustainableLEDesign™**

**CERTIFICATIONS**

- UL/cUL Listed
- LM79 / LM80 Compliant
- 3G Vibration Rated
- IP65 Fixture Rating, IP66 LightBARs
- ARRA Compliant
- ISO 9001

**ENERGY DATA**

- Electronic LED Driver**
- >0.9 Power Factor
- <20% Total Harmonic Distortion
- 120-277V/50 & 60hz, 347V/60hz, 480V/60hz
- 30°C Minimum Temperature
- 40°C Ambient Temperature Rating
- 50°C [Optional] Ambient Temperature Rating

**EPA**

- Effective Projected Area:** (Sq. Ft.)
- Without Arm:** 0.48
- With Arm:** 0.67

**SHIPPING DATA**

- Approximate Net Weight:**
- 12.5 lbs (5.8 kgs.)



POWER AND LUMENS BY BAR COUNT

Number of LightBARs	DISTRIBUTION														
	Power [Watts]	Current @ 120V [A]	Current @ 277V [A]	T2	T3	T3S	T4	SL2	SL3	SL4	5MQ	5WQ	5XQ	RW	SLR/SLL
<b>7 LED LIGHTBAR</b>															
C01	27	0.23	0.13	1,886	1,858	1,796	1,842	1,869	1,895	1,842	1,959	1,929	1,965	1,866	1,742
C02	54	0.46	0.21	3,743	3,687	3,564	3,655	3,708	3,761	3,655	3,886	3,827	3,899	3,702	3,457
C03	77	0.65	0.29	5,514	5,431	5,251	5,385	5,463	5,540	5,384	5,725	5,638	5,744	5,454	5,093
C04	101	0.86	0.37	7,334	7,224	6,984	7,163	7,266	7,369	7,161	7,615	7,499	7,640	7,254	6,774
<b>21 LED LIGHTBAR</b>															
B01	27	0.23	0.13	2,320	2,285	2,210	2,266	2,299	2,331	2,266	2,409	2,373	2,417	2,295	2,143
B02	51	0.43	0.20	4,604	4,534	4,384	4,486	4,561	4,625	4,495	4,780	4,707	4,796	4,554	4,252
B03	73	0.62	0.28	6,782	6,680	6,459	6,624	6,719	6,814	6,622	7,042	6,936	7,065	6,708	6,264
B04	95	0.81	0.35	9,021	8,885	8,591	8,810	8,938	9,064	8,808	9,366	9,224	9,397	8,923	8,332

LUMEN MULTIPLIER

Ambient Temperature	Lumen Multiplier
10°C	1.04
15°C	1.03
25°C	1.00
40°C	0.96
50°C	0.92

ORDERING INFORMATION

Sample Number: LDRV-T2-B02-E-DP

LD RV SL4 C02 E PC-120 BZ MA1182-XX

**Lamp Type**  
LD=Solid State Light Emitting Diodes (LED)

**Series**  
RV=Ridgeview

**Distribution**<sup>1</sup>  
T2=Type II  
T3=Type III  
T4=Type IV  
T3S=Type III Short  
5MQ=Type V Square Medium  
5WQ=Type V Square Wide  
5XQ=Type V Square Extra Wide  
RW=Rectangular Wide  
SL2=Type II w/Spill Control  
SL3=Type III w/Spill Control  
SL4=Type IV w/Spill Control  
SLL=90 Degree Spill Light Eliminator Left  
SLR=90 Degree Spill Light Eliminator Right

**Number of Lightbars**<sup>2,3</sup>  
B01=[1] 21 LED LightBAR  
B02=[2] 21 LED LightBARs  
B03=[3] 21 LED LightBARs  
B04=[4] 21 LED LightBARs  
C01=[1] 7 LED LightBARs  
C02=[2] 7 LED LightBARs  
C03=[3] 7 LED LightBARs  
C04=[4] 7 LED LightBARs

**Voltage**  
E=Electronic (120 - 277V)  
347=347V<sup>4</sup>  
480=480V<sup>4</sup>

**Options**<sup>5</sup>  
HA=50 Degrees C High Ambient Temperature Rating  
WM=Wall Mount Arm and Mounting Plate<sup>7</sup>  
L90=Optics Rotated Left 90 Degrees  
R90=Optics Rotated Right 90 Degrees  
PC=Button Type Photocontrol (Specify 120V, 208V, 240V, or 277V)  
PER=NEMA Twistlock Photocontrol<sup>9</sup> Receptacle  
2L=Two Circuits<sup>10</sup>  
7060=70CRI/6000K CCT<sup>11</sup>  
8030=80CRI/3000K CCT<sup>11</sup>  
LCF=LightBAR Cover Plate Matches Housing Finish  
MS-LXX=Motion Sensor for on/off<sup>12</sup> operation  
MS/X-LXX=Motion Sensor for bi-level<sup>13</sup> switching  
BBLEDCLD=UL924 LED Cold Battery<sup>14</sup> Back-up (Specify Voltage)

**Accessories**<sup>16</sup>  
MA1175-XX=Single Tenon Adaptor for 3 1/2" O.D. Tenon  
MA1176-XX=2 @ 180 degree Tenon Adaptor for 3 1/2" O.D. Tenon  
MA1177-XX=3 @ 120 degree Tenon Adaptor for 3 1/2" O.D. Tenon  
MA1178-XX=4 @ 90 degree Tenon Adaptor for 3 1/2" O.D. Tenon  
MA1179-XX=2 @ 90 degree Tenon Adaptor for 3 1/2" O.D. Tenon  
MA1180-XX=2 @ 120 degree Tenon Adaptor for 3 1/2" O.D. Tenon  
MA1181-XX=3 @ 90 degree Tenon Adaptor for 3 1/2" O.D. Tenon  
MA1182-XX=Single Tenon Adaptor for 2 3/8" O.D. Tenon  
MA1183-XX=2 @ 180 degree Tenon Adaptor for 2 3/8" O.D. Tenon  
MA1184-XX=3 @ 120 degree Tenon Adaptor for 2 3/8" O.D. Tenon  
MA1185-XX=4 @ 90 degree Tenon Adaptor for 2 3/8" O.D. Tenon  
MA1186-XX=2 @ 90 degree Tenon Adaptor for 2 3/8" O.D. Tenon  
MA1187-XX=3 @ 90 degree Tenon Adaptor for 2 3/8" O.D. Tenon  
OARA1013: Shorting Cap  
OARA1014: Photoelectric Control, 120 Volt NEMA Type  
OARA1016: Photoelectric Control 105-285V NEMA Type  
OARA1027: Photoelectric Control 480V NEMA Type  
OARA1201: Photoelectric Control 347V NEMA Type  
RVWG: Field Installed Wire Guard  
MA1300-XX: Wall Mount Plate (R Drill Pattern)  
MA1305-XX: R to M Square Pole Adapter  
MA1306-XX: R to M Round Pole Adapter  
MA1253: 10KV Circuit Module Replacement

**Standard Color**<sup>15</sup>  
BZ: (Standard Color is Bronze)  
WH: White  
BK: Black  
AP: Grey  
DP: Dark Platinum  
GM: Graphite Metallic

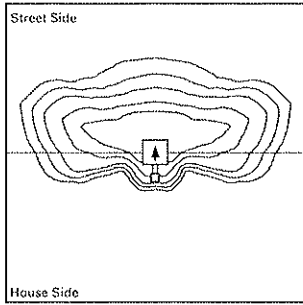
- Notes: 1 8 Inch Arm and Round pole adaptor included with fixture.  
2 21 LED LightBAR powered at 350mA, 7 LED LightBAR powered at 1A.  
3 Lumen values based upon 4000°K CCT, 350mA drive current, 25°C ambient operating temperature.  
4 Not available with Two Circuit Option.  
5 Add as suffix.  
6 HA not available with BBLEDCLD options.  
7 Wall mount arm and mounting plate included with fixture.  
8 Specify voltage. Available in 120, 277, 208, 240V. Not available with HA option.  
9 Specify voltage. Not available with HA option.  
10 Low-level output varies by bar count, consult factory. Not available with 347V or 480V.  
11 Consult factory for lead time and lumen multiplier.  
12 Sensor housed in external box mounted to the luminaire. Replace XX with mounting height in feet for proper lens selection (i.e., MS-L20). Not available with HA option. Consult factory for additional information.  
13 Motion sensor for bi-level switching. Sensor housed in external box mounted to the luminaire. Available in 802 - B04 and C02 -C04 configurations. Replace X with number of bars operating in low output mode and replace XX with fixture mounting height for proper lens selection (i.e., MS/S-L20). Not available with HA option. Consult factory for additional information.  
14 Specify 120 or 277V. Available with B01 or C01 configurations only. 25°C ambient operating temperature.  
15 Standard housing color is bronze.  
16 Order separately, replace XX with color designation.



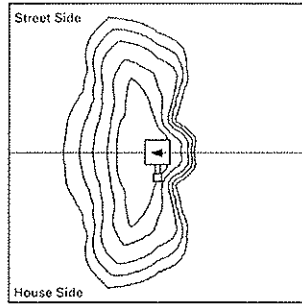
NOTE: Specifications and dimensions subject to change without notice.  
Visit our web site at www.cooperlighting.com  
Customer First Center 1121 Highway 74 South Peachtree City, GA 30269 770.486.4800 FAX 770.486.4801

ADH092075 pc  
2012-01-18 10:20:34  
2012-01-18 10:01:34

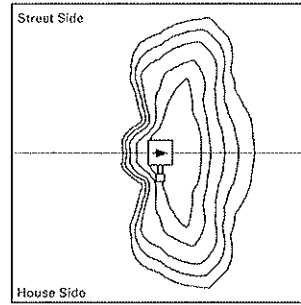
**OPTIC ORIENTATION**



Standard



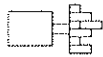
Optics Rotated Left @ 90° [L90]



Optics Rotated Right @ 90° [R90]

**MOUNTING CONFIGURATIONS**

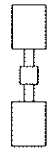
Wall Mount



Arm Mount Single  
EPA: 0.67



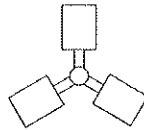
Arm Mount 2 @ 180  
EPA: 1.34



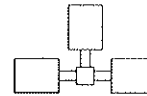
Arm Mount 2 @ 90  
EPA: 1.34



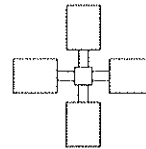
Arm Mount 3 @ 120  
EPA: 1.72

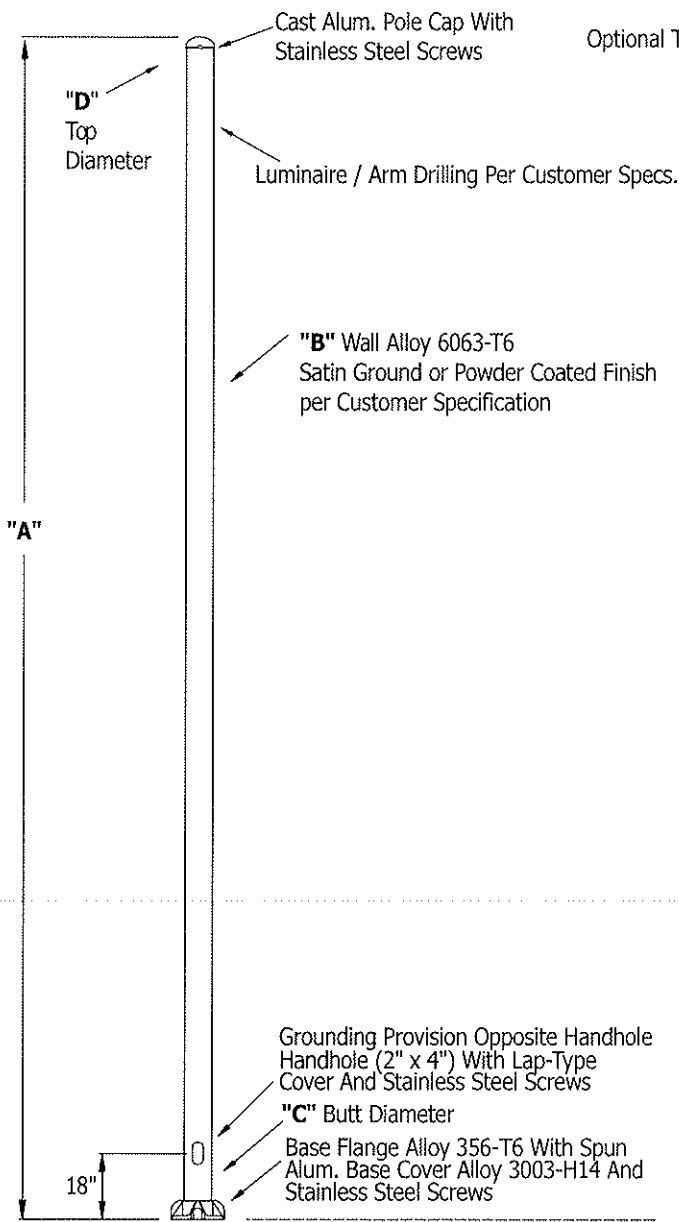


Arm Mount 3 @ 90  
EPA: 1.72

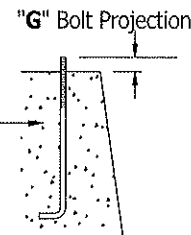
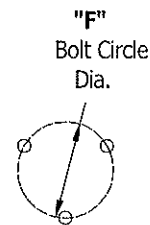
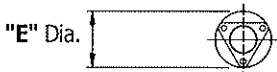


Arm Mount 4 @ 90  
EPA: 1.94





**WARNING:** Do not install light pole without luminaire.



- (3) Galv. Stl. Anchor Bolts, AASHTO M314-90 Grade 55, 10" Of Threaded End Galv. Per ASTM A153.
- (3) Galv. Stl. Hex. Nuts
- (3) Galv. Stl. Lockwashers
- (3) Galv. Stl. Flatwashers

<b>Mounting Height:</b>	10 ft
<b>Wall Thickness:</b>	.125 in
<b>Butt Diameter:</b>	4 in
<b>Top Diameter:</b>	4 in
<b>Base Diameter:</b>	7 in
<b>Bolt Circle:</b>	7 in
<b>Bolt Projection:</b>	2 in
<b>Bolt Size:</b>	.75 x 17 x 3
<b>Net Weight:</b>	21
<b>Luminary Weight:</b>	100
<b>Arm Length:</b>	
<b>Quantity:</b>	

<i>Maximum EPA</i>	
<b>70:</b>	6.4
<b>80:</b>	4.5
<b>90:</b>	3.2
<b>100:</b>	2.4
<b>110:</b>	1.9

**Accessories**

**Your Name:**  
**Representative Name:**  
**Architect Name:**  
**Project Name:**  
**Customer P.O. #:**

**Finish:** 01 - Satin finish for ROUND poles

**Date:** 04/13/2012

**Notes:**