

J:\2011 PROJECTS\11010 PELLITTER WASTE SYSTEMS\ADDITION\DRAWINGS\1102.FLD (SCALE=1/16") 06/06/2011 9:24 AM

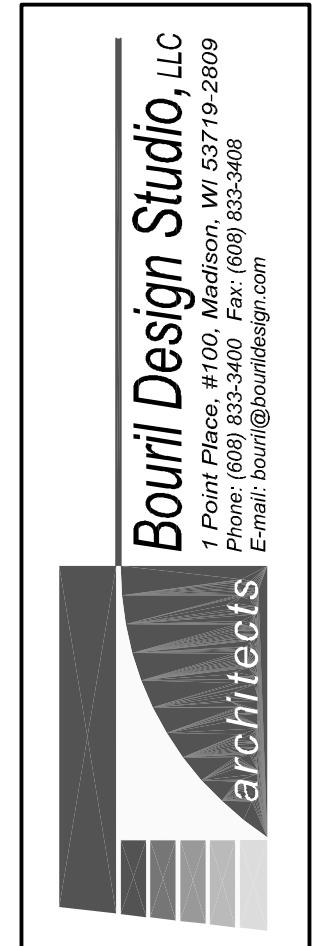


**1 FIRST FLOOR PLAN**  
 1/16" = 1'-0" NEW ADDITION 54,946 SQ. FT. EXISTING 30,148 SQ. FT.

**2 MEZZANINE FLOOR PLAN**  
 1/16" = 1'-0" NEW ADDITION 1,517 SQ. FT. EXISTING 762 SQ. FT.

THIS DESIGN REPRESENTED BY THESE DRAWINGS IS THE PROPERTY OF BOURIL DESIGN STUDIO, LLC. THESE DRAWINGS, WHETHER PRINTED OR IN ELECTRONIC FORMAT, MAY NOT BE COPIED OR REPRODUCED IN ANY FORM WITHOUT THE WRITTEN CONSENT OF BOURIL DESIGN STUDIO, LLC OF MADISON, WISCONSIN.

**PLAN COMMISSION SUBMITTAL**  
 NOT FOR CONSTRUCTION



PROPOSED MATERIAL RECOVERY FACILITY  
 ADDITION FOR:  
**PELLITTER WASTE SYSTEMS**  
 4002 KIPP STREET  
 MADISON, WISCONSIN 53718

REVISIONS		
Δ	DATE	ISSUE

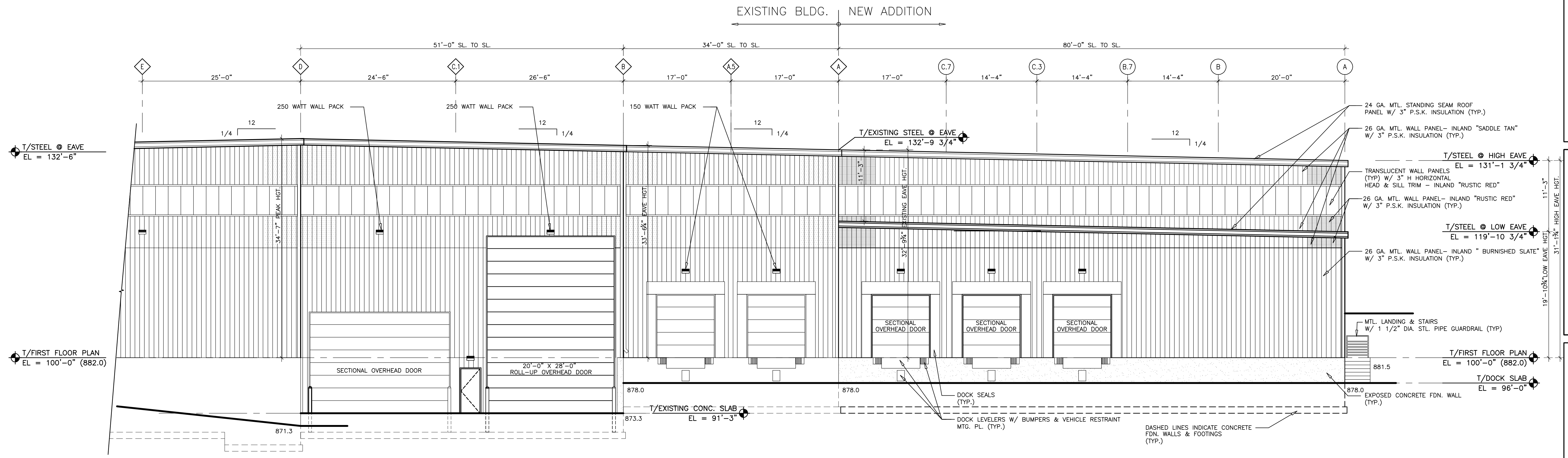
PROJECT NO  
11010

DATE  
April 06, 2011

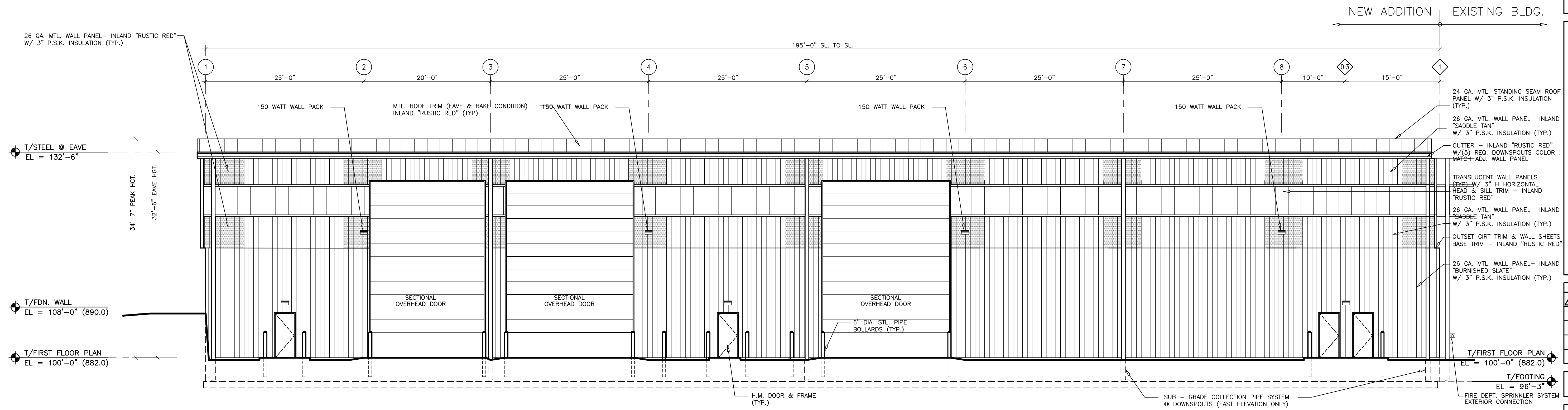
DRAWN BY  
MRW

**A**  
**102**

J:\2011 PROJECTS\11010 PELLITTER WASTE SYSTEMS - ADDITION\DRAWINGS\11010 A201 - EE.DWG 04/06/2011 - 9:33 AM



1 NORTH ELEVATION  
1/8" = 1'-0"



2 EAST ELEVATION  
1/8" = 1'-0"

THIS DESIGN REPRESENTED BY THESE DRAWINGS IS THE PROPERTY OF BOURIL DESIGN STUDIO, LLC. THESE DRAWINGS, WHETHER PRINTED OR IN ELECTRONIC FORMAT, MAY NOT BE COPIED OR REPRODUCED IN ANY FORM WITHOUT THE WRITTEN CONSENT OF BOURIL DESIGN STUDIO, LLC OF MADISON, WISCONSIN.

PLAN COMMISSION SUBMITTAL NOT FOR CONSTRUCTION

**Bouril Design Studio, LLC**  
 1 Point Pkwy., #100, Madison, WI 53719-2609  
 Phone: 608.261.0000 Fax: 608.261.0001  
 Email: bouril@bourildesign.com

architects

PROPOSED MATERIAL RECOVERY FACILITY  
 ADDITION FOR:  
**PELLITTER WASTE SYSTEMS**  
 4002 KIPP STREET  
 MADISON, WISCONSIN 53718

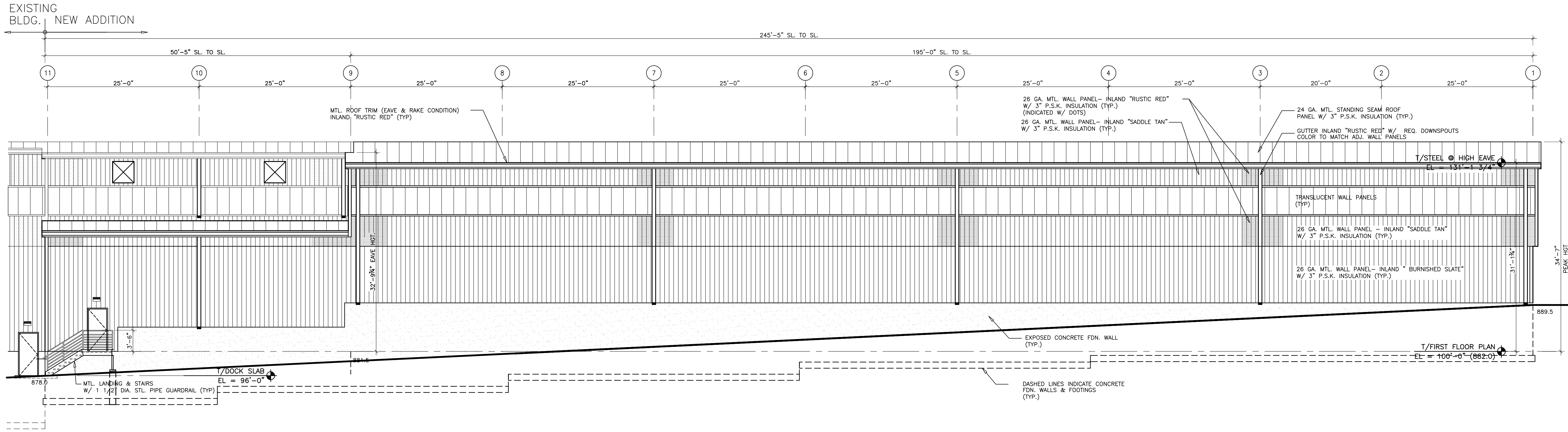
REVISIONS		
Δ	DATE	ISSUE

PROJECT NO  
11010

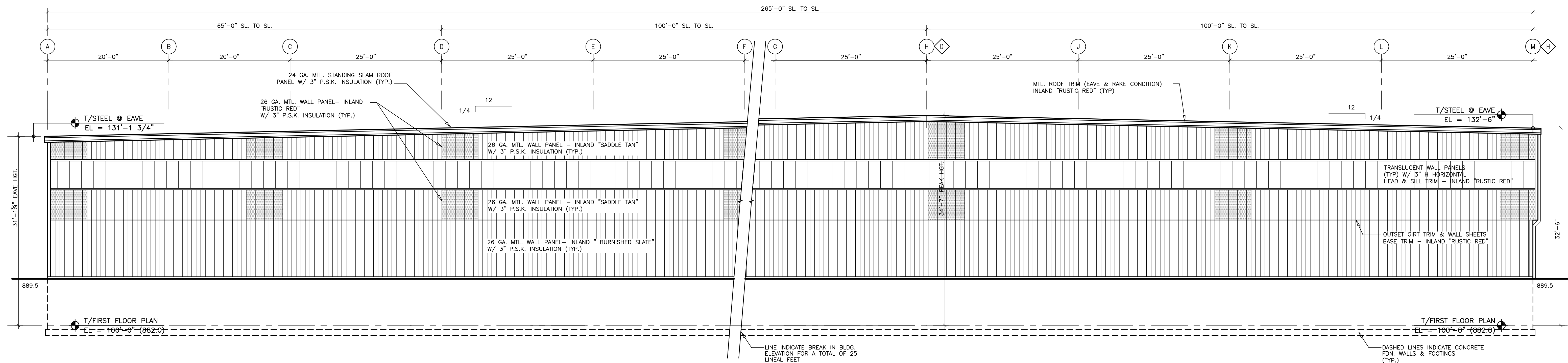
DATE  
April 06, 2011

DRAWN BY

A  
201



1 WEST ELEVATION  
1/8" = 1'-0"



2 SOUTH ELEVATION  
1/8" = 1'-0"

THIS DESIGN REPRESENTED BY THESE DRAWINGS IS THE PROPERTY OF BOURIL DESIGN STUDIO, LLC. THESE DRAWINGS, WHETHER PRINTED OR IN ELECTRONIC FORMAT, MAY NOT BE COPIED OR REPRODUCED IN ANY FORM WITHOUT THE WRITTEN CONSENT OF BOURIL DESIGN STUDIO, LLC OF MADISON, WISCONSIN.

PLAN COMMISSION  
SUBMITTAL  
NOT FOR CONSTRUCTION

Bouril Design Studio, LLC  
1 Point Pkwy., #100, Madison, WI 53719-2609  
P: 608.261.1000  
E: bouril@bourildesign.com

PROPOSED MATERIAL RECOVERY FACILITY  
ADDITION FOR:  
PELLITTERI WASTE SYSTEMS  
4002 KIPP STREET  
MADISON, WISCONSIN 53718

REVISIONS		
Δ	DATE	ISSUE

PROJECT NO  
11010

DATE  
April 06, 2011

DRAWN BY

A  
202

J:\2011 PROJECTS\11010 PELLITTERI WASTE SYSTEMS - ADDITION\DRAWINGS\11010 A201-EE.DWG 04/06/2011 - 9:32 AM







05 Apr 2011 - 3:39p V:\LDD2\Koscik\_093096981\_Pelitteri\_Site\_Landscape Plan 040511\_6981 (2).dwg by: svin ©2005 Vierbicher Associates, Inc.

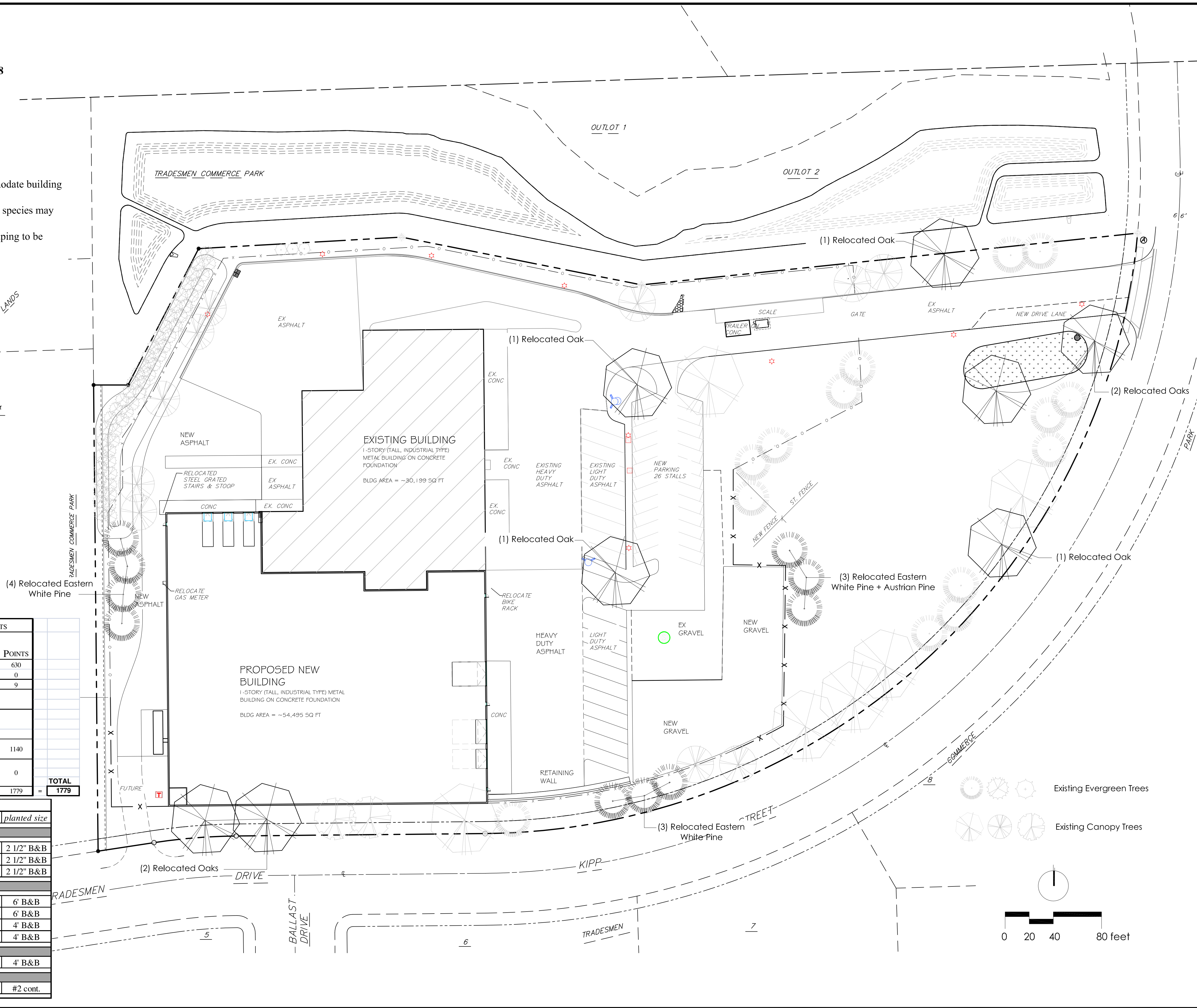
**City of Madison Landscape Worksheet**

Number of Parking Stalls: 46  
 Storage Area: 17,573 S.F.  
 Number of **Canopy Shade Trees** Required (2"-2 1/2" cal.): **8**

Number of Landscape Points Required: 475.1  
 Number of Points Required for Loading Areas: 600  
 Total Number of **Points** Required: **1075**

**NOTES:**

- Existing landscaping is sufficient to meet City Ordinance
- Contractor will **relocate existing landscaping** to accommodate building + parking additions.
- Species shown based on original landscape plan. Existing species may vary from original plan.
- See Landscape Demo Plan for current locations of landscaping to be relocated
- Existing landscaping is less than 2 years old



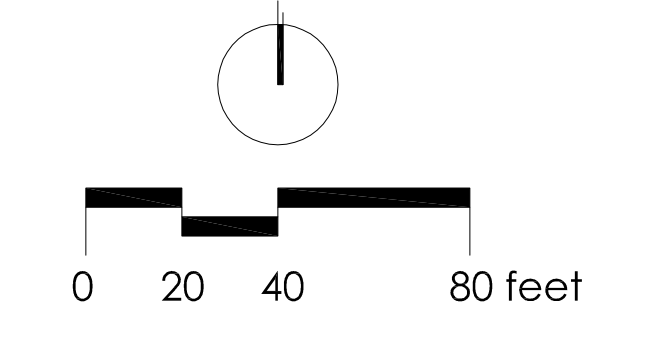
**Landscape Points & Credits:**

ELEMENT	POINT VALUE	QUANTITY	CREDITS		
			POINTS ACHIEVED	QUANTITY	POINTS
Canopy Tree: 2"-2 1/2"	35	0	0	18	630
Deciduous Shrub	2	0	0	0	0
Evergreen Shrub	3	0	0	3	9
Decorative Wall or Fence (per 10 L.F.)	5				
Earth Berm (per 10 L.F.)	5				
Avg. Height 30"	2				
Avg. Height 15"					
Evergreen Trees 3' height minimum	15	0	0	76	1140
Canopy Tree or Small Tree 1 1/2"-2" Caliper (i.e. Crab, Hawthorn)	15	0	0	0	0
<b>TOTAL</b>					<b>1779</b>
<b>Sub Totals</b>		0	+	1779	

Existing Plant List			
quantity	common name	botanical name	planted size
deciduous trees			
10	Marmo Maple	<i>Acer x. freemanii 'Marmo'</i>	2 1/2" B&B
2	Honey Locust	<i>Gleditsia triacanthos</i>	2 1/2" B&B
14	Swamp White Oak	<i>Quercus bicolor</i>	2 1/2" B&B
evergreen trees			
44	Black Hills Spruce	<i>Picea glauca var. densata</i>	6" B&B
8	Green Colorado Spruce	<i>Picea pungens</i>	6" B&B
5	Austrian Pine	<i>Pinus nigra</i>	4" B&B
19	Eastern White Pine	<i>Pinus strobus</i>	4" B&B
evergreen shrubs			
3	Canaert Redcedar	<i>Juniperus virginiana 'Canaertii'</i>	4" B&B
perennials/vines			
46	American Bittersweet	<i>Celastrus scandens</i>	#2 cont.

REVISIONS	NO.	DATE	REMARKS

SCALE AS SHOWN  
 DATE 04/11  
 DRAFTER SVIN  
 CHECKED  
 PROJECT NO.  
 SHEET 2 OF 2  
 DWG. NO. L102









View of North side of building

Pellitteri Waste Systems

3/1/2011



View of Southeast side of building

Pellitteri Waste Systems

3/1/2011