



SCHREIBER / ANDERSON
ASSOCIATES, INC.
717 John Nolen Drive
Madison, WI 53713
Ph. 608.255.0800
Fx. 608.255.7750
www.saa-madison.com

Professional Seal

Revision Date

Project Name

PDQ
PENNSYLVANIA
AVENUE

CITY OF MADISON
WISCONSIN

Drawn By:
Checked By:
File: P-A1
Issued For: CUP
Issue Date: 06/22/05
Project No. 2090

Sheet Title

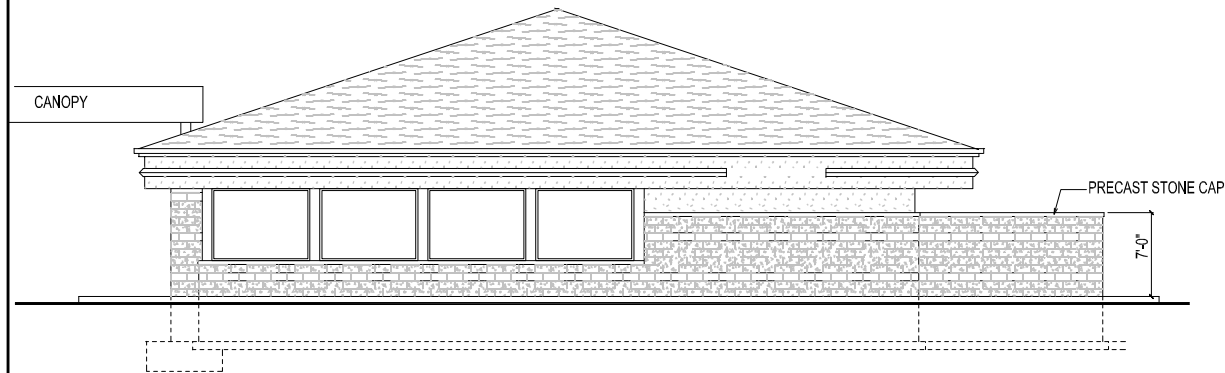
BUILDING
ELEVATIONS

(SCALE INDICATED FOR
24"x36" SHEET)

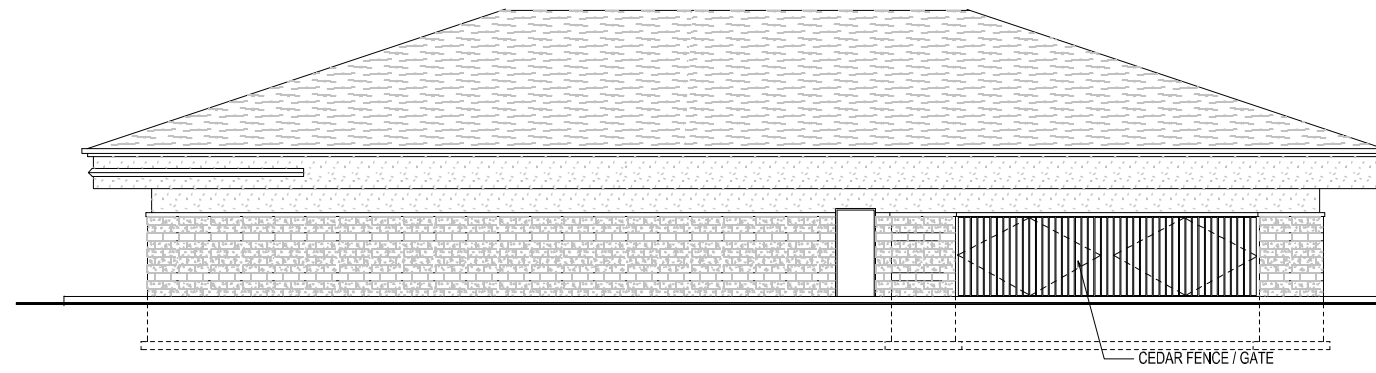
0 4 8 16

Sheet Number

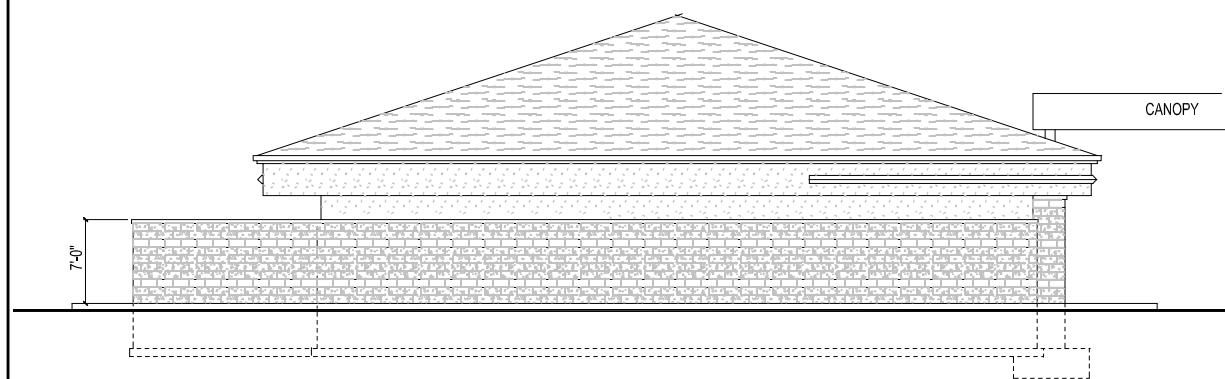
A-1



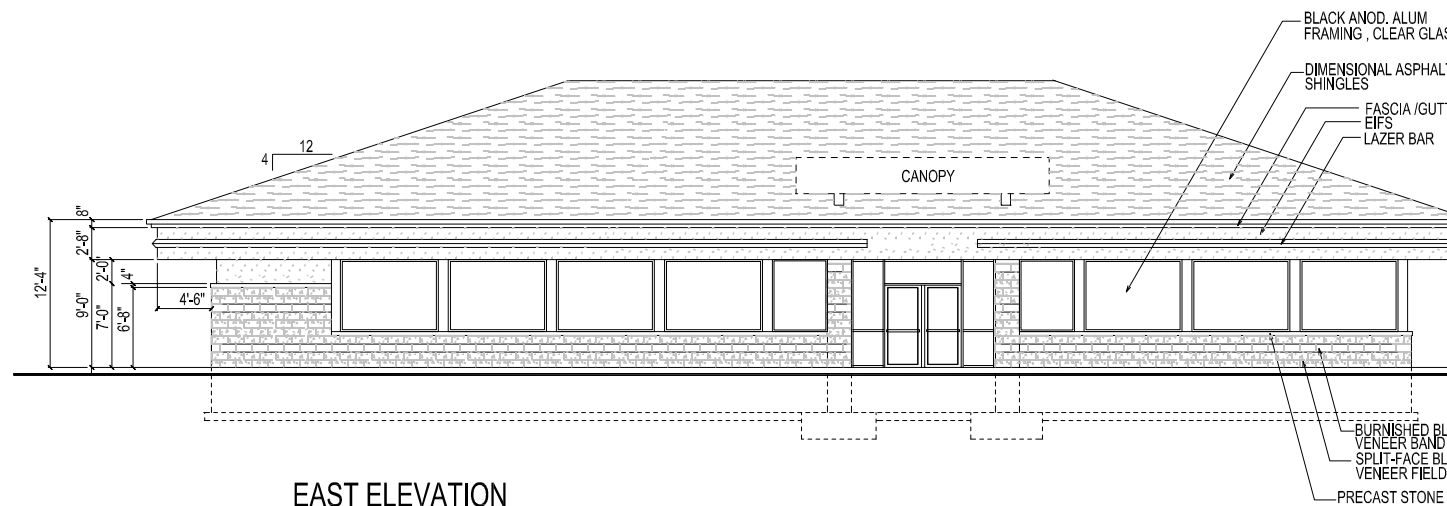
SOUTH ELEVATION
1/8"=1'-0"



WEST ELEVATION
1/8"=1'-0"

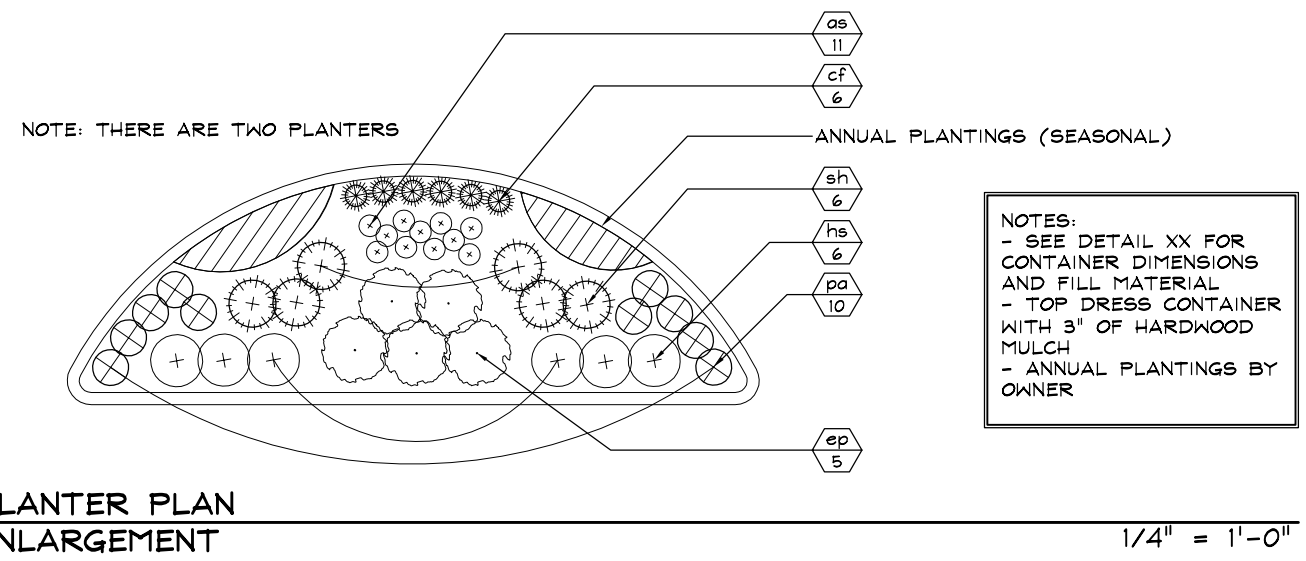


NORTH ELEVATION
1/8"=1'-0"



EAST ELEVATION
1/8"=1'-0"

© COPYRIGHT
These plans and designs depicted therein, including but not limited to, the overall form, arrangement and composition of spaces and elements of the design, are protected under Copyright Laws. Collectively they are the property of Thomas W. McCoy. Any copying or other unauthorized use can result in the cessation of such construction or the demolition of such resultant construction.



**PLANTER PLAN
 ENLARGEMENT**

1/4" = 1'-0"

NATIVE PLANT MIX A WOODLAND
 EDGE/SAVANNA MIX

BOTANICAL NAME	COMMON NAME
WILDFLOWERS	
<i>Actaea rubra</i>	Red Baneberry
<i>Agastache foeniculum</i>	Lavender Hyssop
<i>Aquilegia canadensis</i>	Columbine
<i>Arisaema triphyllum</i>	Jack in the Pulpit
<i>Aster sagittifolius</i>	Arrow Leaved Aster
<i>Baptisia australis</i>	Blue False Indigo
<i>Baptisia lactea</i>	White False Indigo
<i>Cacalia atriplicifolia</i>	Pale Indian Plantain
<i>Campanula americana</i>	Tall Bellflower
<i>Dodecatheon meadia</i>	Shootingstar
<i>Echinacea purpurea</i>	Purple Coneflower
<i>Eupatorium purpureum</i>	Sweet Joe Pye Weed
<i>Monarda fistulosa</i>	Bergamont
<i>Napaea dioica</i>	Glade Mallow
<i>Penstemon digitalis</i>	Smooth Penstemon
<i>Polygonatum canaliculatum</i>	Great Solomon's Seal
<i>Rudbeckia hirta</i>	Black Eyed Susan
<i>Rudbeckia subtomentosa</i>	Sweet Black Eyed Susan
<i>Rudbeckia triloba</i>	Brown Eyed Susan
<i>Smilacina racemosa</i>	Solomon's Plume
<i>Veronicastrum virginicum</i>	Culver's Root
<i>Zizia aurea</i>	Golden Alexanders
GRASSES	
<i>Chasmanthium latifolium</i>	Northern Sea Oats
<i>Elymus virginicus</i>	Virginia Wild Rye
<i>Hystrix patula</i>	Bottlebrush Grass
TOTAL NATIVE PLANT MIX AREA	5,500 SF

LANDSCAPE PLANT LEGEND

Symbol	Botanical name	Common Name	Size	Root	Quantity	Comments
SHADE TREES						
AR	<i>Acer Rubrum</i>	Red Maple	2" Cal.	B#B	3	20'-0" spacing O.C.
GT	<i>Gleditsia triacanthos inermis</i>	Thornless Honeylocust	2" Cal.	B#B	3	20'-0" spacing O.C.
SA	<i>Salix alba 'Tristis'</i>	Golden Weeping Willow	2" Cal.	B#B	2	20'-0" spacing O.C.
ORNAMENTAL TREES						
Cc	<i>Cercis canadensis</i>	Eastern Redbud	6' Ht.	Cont.	1	Multi-stem
Pt	<i>Populus tremuloides</i>	Quaking Aspen	2" Cal.	B#B	27	Spacing per plan
EVERGREEN TREES						
PG	<i>Picea glauca var. densata</i>	Black Hill's Spruce	6-7' Ht.	Cont.	2	Upright dense evergreen
PS	<i>Pinus strobus</i>	Eastern White Pine	6-7' Ht.	Cont.	4	20'-0" spacing O.C.
EVERGREEN SHRUBS						
Jc	<i>Juniperus chinensis 'Sea Green'</i>	Sea Green Juniper	18-24" Ht.	Cont.	37	5'-0" spacing O.C.
Js	<i>Juniper squamata 'Blue Star'</i>	Blue Star Juniper	18" Ht.	Cont.	47	4'-0" spacing O.C.
To	<i>Thuja occidentalis 'Smaragd'</i>	Emerald Green Arb.	5-6' Ht.	Cont.	2	4'-0" spacing O.C.
DECIDUOUS SHRUBS						
Cm	<i>Cornus mas 'Golden Glory'</i>	Golden Glory Cornelian	#5	Cont.	19	6'-0" spacing O.C.
Fm	<i>Fothergilla Mount Airy</i>	Mount Airy Fothergilla	#5	Cont.	2	6'-0" spacing O.C.
ij	<i>Ilex verticillata 'Jim Dandy'</i>	Jim Dandy Winterberry	#2	Cont.	15	4'-0" spacing O.C.
ir	<i>Ilex verticillata 'Red Sprite'</i>	Red Sprite Winterberry	#2	Cont.	66	3'-0" spacing O.C.
Ra	<i>Rhus aromatica 'Gro Low'</i>	Gro-Lo Sumac	#2	Cont.	14	5'-0" spacing O.C.
Vj	<i>Viburnum x judii</i>	Judd Viburnum	#5	Cont.	13	6'-0" spacing O.C.
Wf	<i>Weigela florida 'Minuet'</i>	Minuet Weigela	#2	Cont.	9	4'-0" spacing O.C.
GROUNDCOVERS / PERENNIALS / GRASSES						
as	<i>Allium schoenoprasum</i>	Common Chives	4.5"	Cont.	22	Aromatic
cf	<i>Carex flacca</i>	Blue-green Sedge	#1	Cont.	12	1'-1.5' spacing O.C.
cg	<i>Calamagrostis acutiflora 'Karl Foerster'</i>	Feather Reed Grass	#1	Cont.	49	2'-0" spacing O.C.
dc	<i>Deschampsia caespitosa</i>	Turfed Hair Grass	#1	Cont.	47	3' O.C. spacing
ep	<i>Echinacea purpurea</i>	Purple Coneflower	#1	Cont.	10	1'-0" spacing O.C.
hl	<i>Helianthus x Lemon Queen</i>	Hybrid Sunflower	4.5"	Cont.	146	max. 4-5' Ht.
hs	<i>Hemerocallis 'Stella D' Oro'</i>	Stella Daylily	#1	Cont.	76	Yellow Flower
pa	<i>Phlox x arendsii 'Hilda'</i>	Arends Phlox	4.5"	Cont.	117	1.5' Ht. x 2' Spread
rf	<i>Rudbeckia fulgida speciosa</i>	Showy Coneflower	#1	Cont.	120	Rudbeckia Neumanii
sh	<i>Sporobolus heterolepis</i>	Northern Dropseed	#1	Cont.	134	2'-0" spacing O.C.



SCHREIBER / ANDERSON
ASSOCIATES, INC.
717 John Nolen Drive
Madison, WI 53713
Ph. 608.255.0800
Fx. 608.255.7750
www.saa-madison.com

Professional Seal

Revision _____ Date _____

Project Name _____

PDQ
PENNSYLVANIA
AVENUE

CITY OF MADISON
WISCONSIN

Drawn By: AW
Checked By: CT
File: P-FP
Issued For: CUP
Issue Date: 06/22/05
Project No. 2090

Sheet Title

FIRE PROTECTION
PLAN

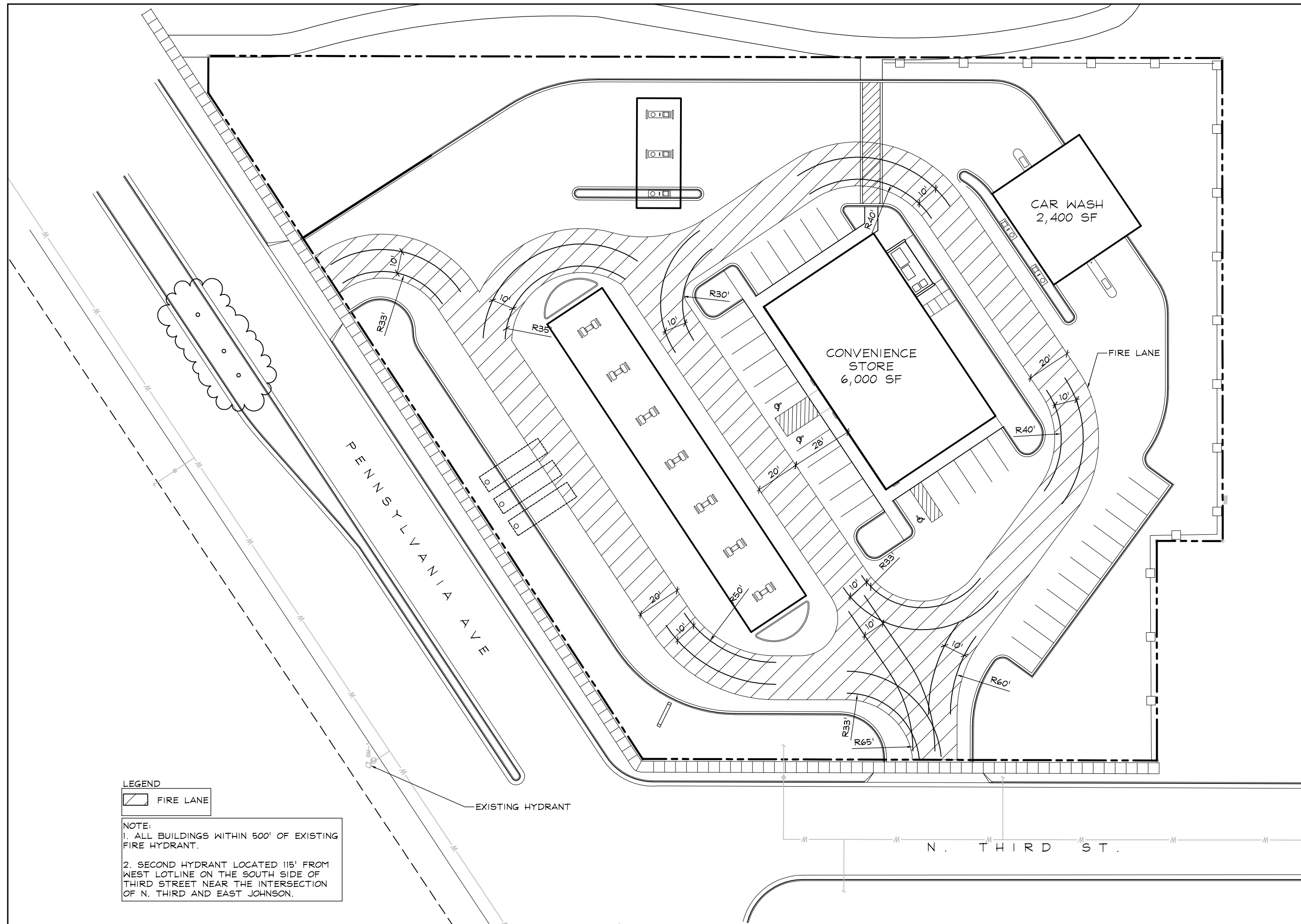


(SCALE INDICATED FOR
24"x36" SHEET)

0 10 20 40

Sheet Number

C-9



LEGEND
 FIRE LANE

NOTE:
 1. ALL BUILDINGS WITHIN 500' OF EXISTING FIRE HYDRANT.
 2. SECOND HYDRANT LOCATED 115' FROM WEST LOTLINE ON THE SOUTH SIDE OF THIRD STREET NEAR THE INTERSECTION OF N. THIRD AND EAST JOHNSON.



SCHREIBER / ANDERSON
ASSOCIATES, INC.
1717 John Nolen Drive
Madison, WI 53713
Ph. 608.255.0800
Fx. 608.255.7750
www.saa-madison.com

Professional Seal

Revision _____ Date _____

Project Name _____

PDQ
PENNSYLVANIA
AVENUE

CITY OF MADISON
WISCONSIN

Drawn By: AW
Checked By: CT
File: P-E
Issued For: CUP
Issue Date: 06/22/05
Project No. 2090

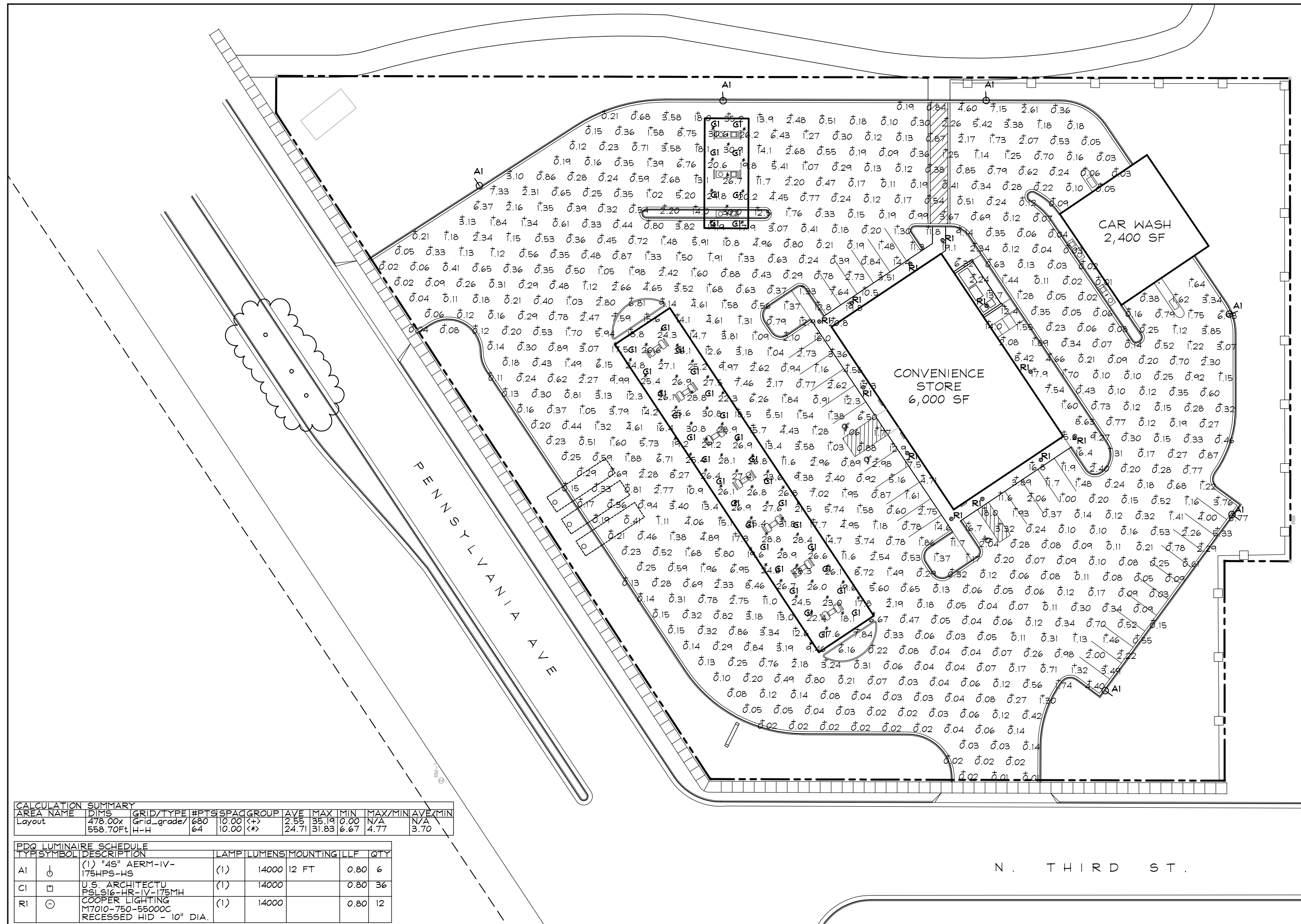
Sheet Title

PHOTOMETRIC
PLAN



Sheet Number

C-8



CALCULATION SUMMARY										
AREA NAME	DIMS	GRID/TYP	#PTS	SPAC	GROUP	AVE	MAX	MIN	MAX/MIN	AVE/MIN
Layout	478.00x 558.70Ft	Grid_grade/ H-H	680	10.00	<+>	2.55	35.19	0.00	N/A	N/A
			64	10.00	<*>	24.71	31.83	6.67	4.77	3.70

PDQ LUMINAIRE SCHEDULE							
TYP	SYMBOL	DESCRIPTION	LAMP	LUMENS	MOUNTING	LLF	QTY
AI	⊙	(1) "45" AERM-IV-175HPS-HS	(1)	14000	12 FT	0.80	6
CI	□	U.S. ARCHITECTU PSL516-HR-IV-175MH	(1)	14000		0.80	36
RI	⊖	COOPER LIGHTING M7010-750-55000C RECESSED HID - 10" DIA.	(1)	14000		0.80	12

N. THIRD ST.



SCHREIBER / ANDERSON
ASSOCIATES, INC.
717 John Nolen Drive
Madison, WI 53713
Ph. 608.255.0800
Fx. 608.255.7750
www.saa-madison.com

Professional Seal

Revision _____ Date _____

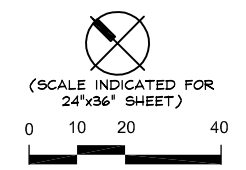
Project Name _____

PDQ
PENNSYLVANIA
AVENUE

CITY OF MADISON
WISCONSIN

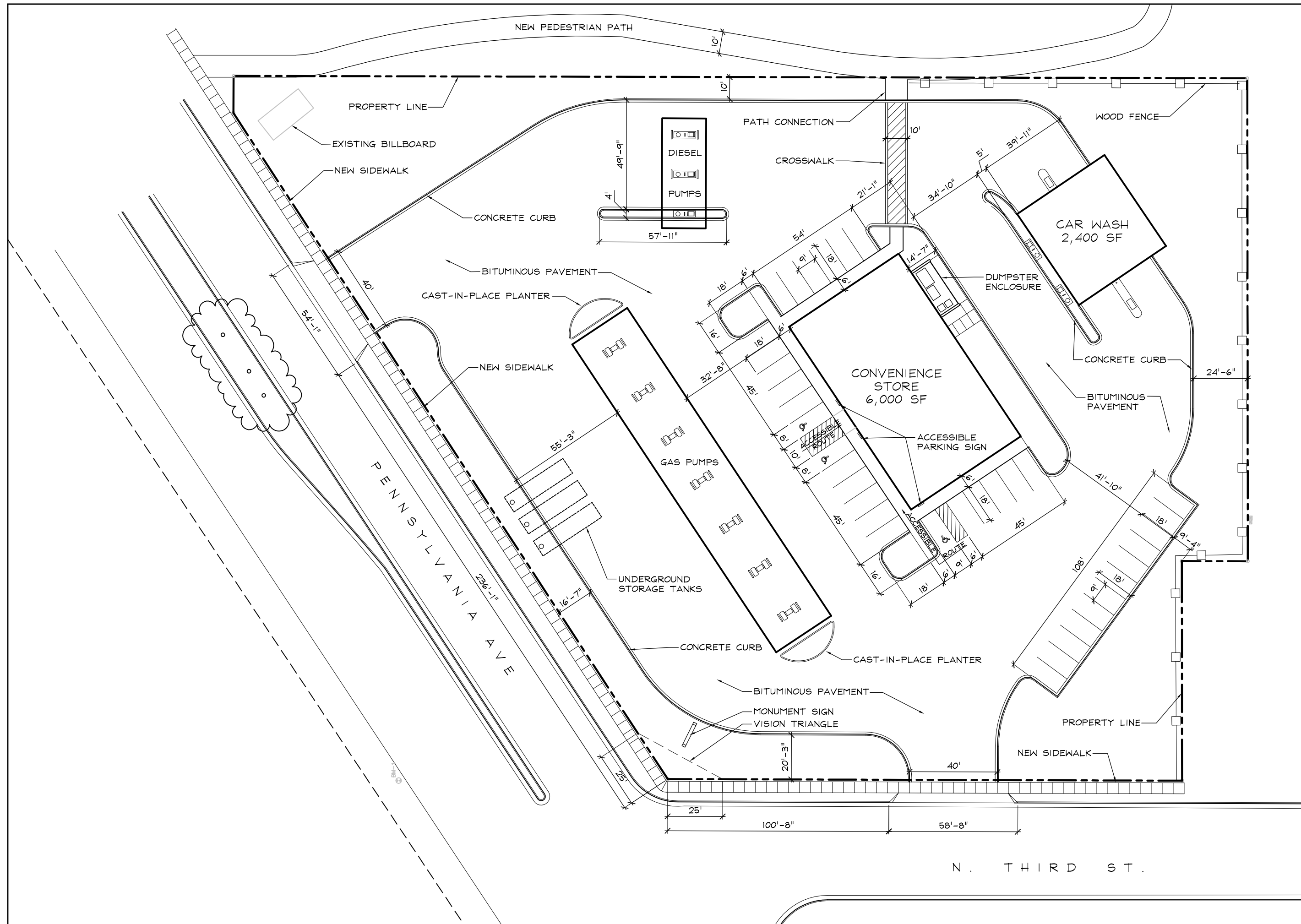
Drawn By: AW
Checked By: CT
File: P-SP
Issued For: CUP
Issue Date: 06/22/05
Project No. 2090

Sheet Title
SITE PLAN



Sheet Number

C-7





SCHREIBER / ANDERSON
ASSOCIATES, INC.
717 John Nolen Drive
Madison, WI 53713
Ph. 608.255.0800
Fx. 608.255.7750
www.saa-madison.com

Professional Seal

Revision _____ Date _____

Project Name _____

PDQ
PENNSYLVANIA
AVENUE

CITY OF MADISON
WISCONSIN

Drawn By: RDP
Checked By: CT
File: P-U
Issued For: CUP
Issue Date: 06/22/05
Project No. 2090

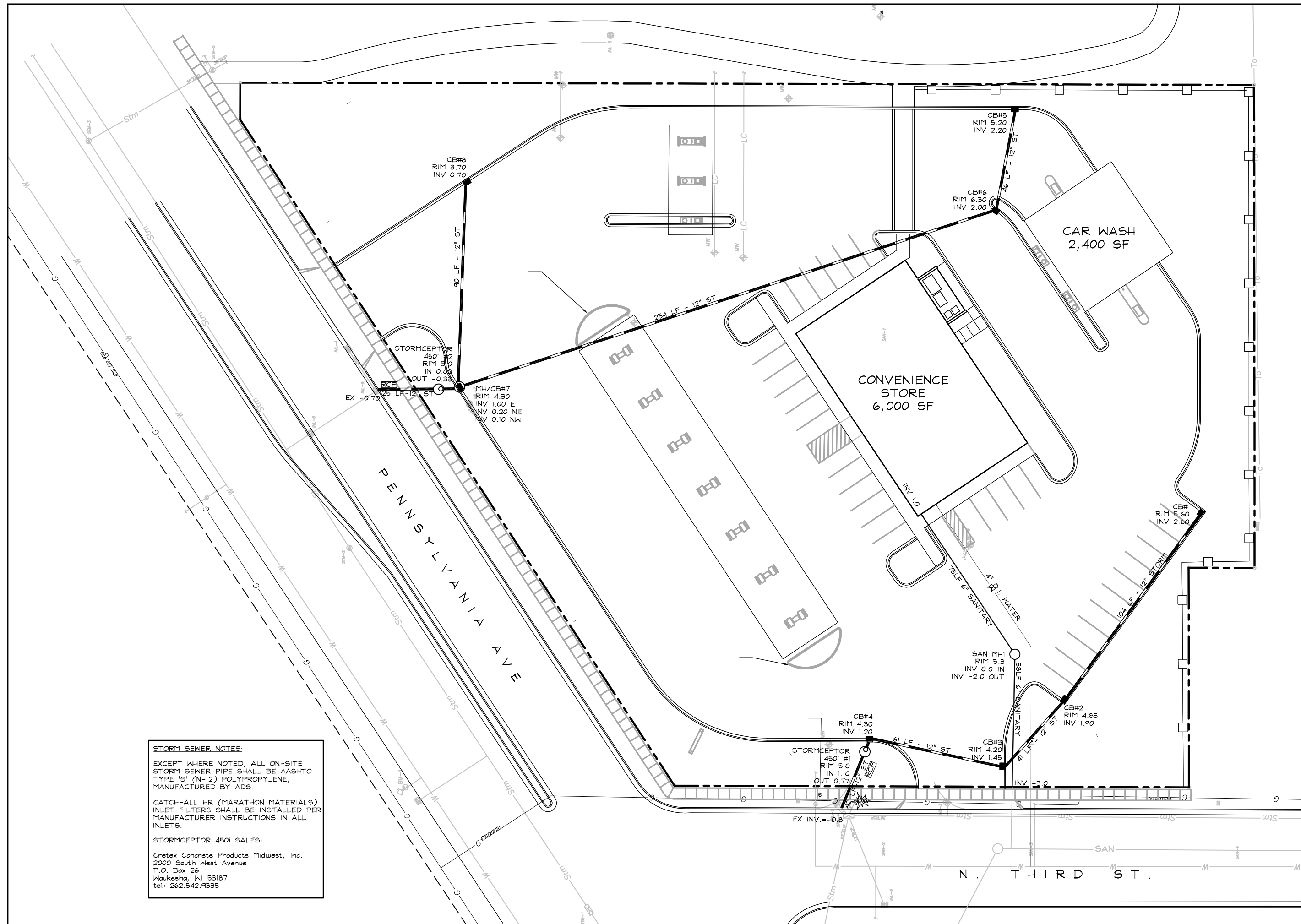
Sheet Title _____

UTILITY PLAN



Sheet Number _____

C-6



STORM SEWER NOTES:

EXCEPT WHERE NOTED, ALL ON-SITE STORM SEWER PIPE SHALL BE AASHTO TYPE 'S' (N-12) POLYPROPYLENE, MANUFACTURED BY ADS.

CATCH-ALL HR (MARATHON MATERIALS) INLET FILTERS SHALL BE INSTALLED PER MANUFACTURER INSTRUCTIONS IN ALL INLETS.

STORMCEPTOR 450i SALES:
Cretex Concrete Products Midwest, Inc.
2000 South West Avenue
P.O. Box 26
Waukesha, WI 53187
tel: 262.542.9335



SCHREIBER / ANDERSON
ASSOCIATES, INC.
717 John Nolen Drive
Madison, WI 53713
Ph. 608.255.0800
Fx. 608.255.7750
www.saa-madison.com

Professional Seal

Revision _____ Date _____

Project Name _____

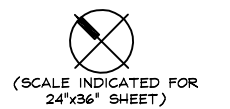
PDQ
PENNSYLVANIA
AVENUE

CITY OF MADISON
WISCONSIN

Drawn By: AW
Checked By: CT
File: P-SG
Issued For: CUP
Issue Date: 06/22/05
Project No. 2090

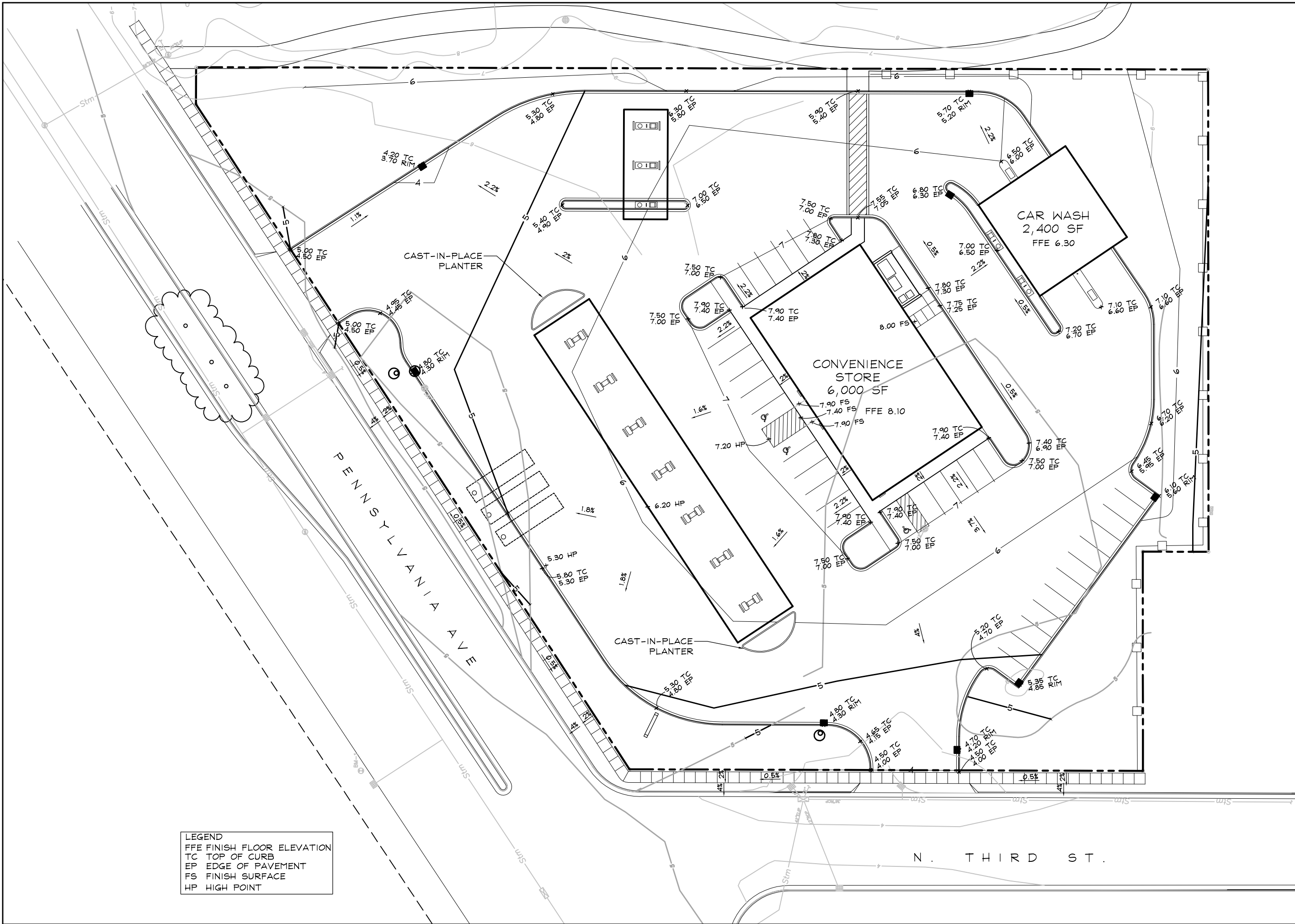
Sheet Title _____

GRADING PLAN



Sheet Number _____

C-5



LEGEND

FFE	FINISH FLOOR ELEVATION
TC	TOP OF CURB
EP	EDGE OF PAVEMENT
FS	FINISH SURFACE
HP	HIGH POINT



SCHREIBER / ANDERSON
ASSOCIATES, INC.
717 John Nolen Drive
Madison, WI 53713
Ph. 608.255.0800
Fx. 608.255.7750
www.saa-madison.com

Professional Seal

Revision _____ Date _____

Project Name _____

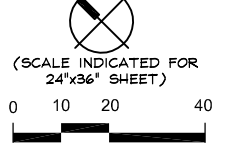
PDQ
PENNSYLVANIA
AVENUE

CITY OF MADISON
WISCONSIN

Drawn By: AW
Checked By: CT
File: P-EC
Issued For: CUP
Issue Date: 06/22/05
Project No. 2090

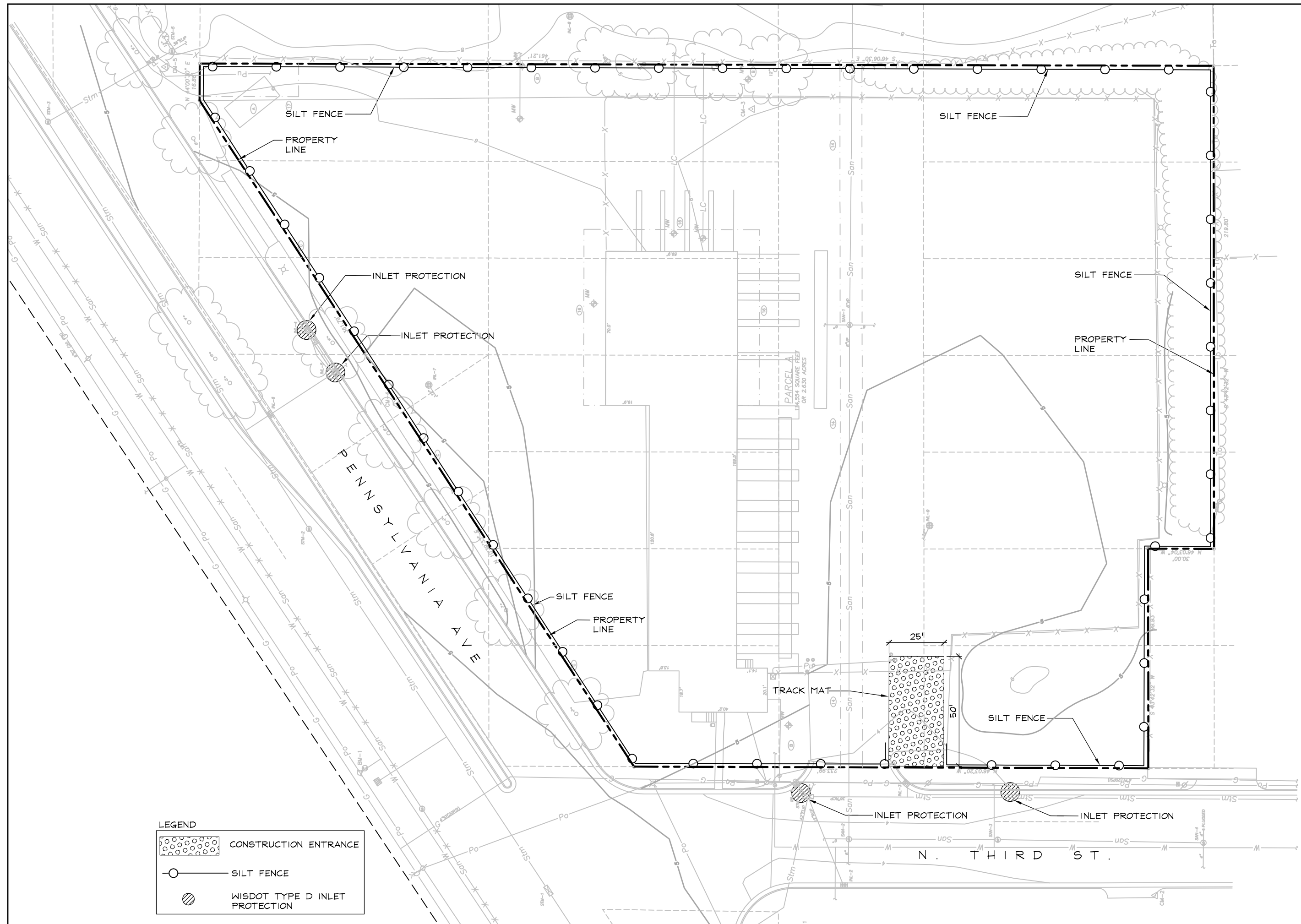
Sheet Title _____

EROSION
CONTROL
PLAN

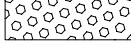
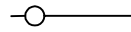



Sheet Number _____

C-4



LEGEND

-  CONSTRUCTION ENTRANCE
-  SILT FENCE
-  WISDOT TYPE D INLET PROTECTION



SCHREIBER / ANDERSON
ASSOCIATES, INC.
717 John Nolen Drive
Madison, WI 53713
Ph. 608.255.0800
Fx. 608.255.7750
www.saa-madison.com

Professional Seal

Revision _____ Date _____

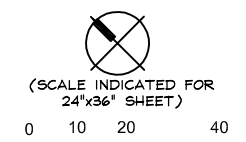
Project Name _____

PDQ
PENNSYLVANIA
AVENUE

CITY OF MADISON
WISCONSIN

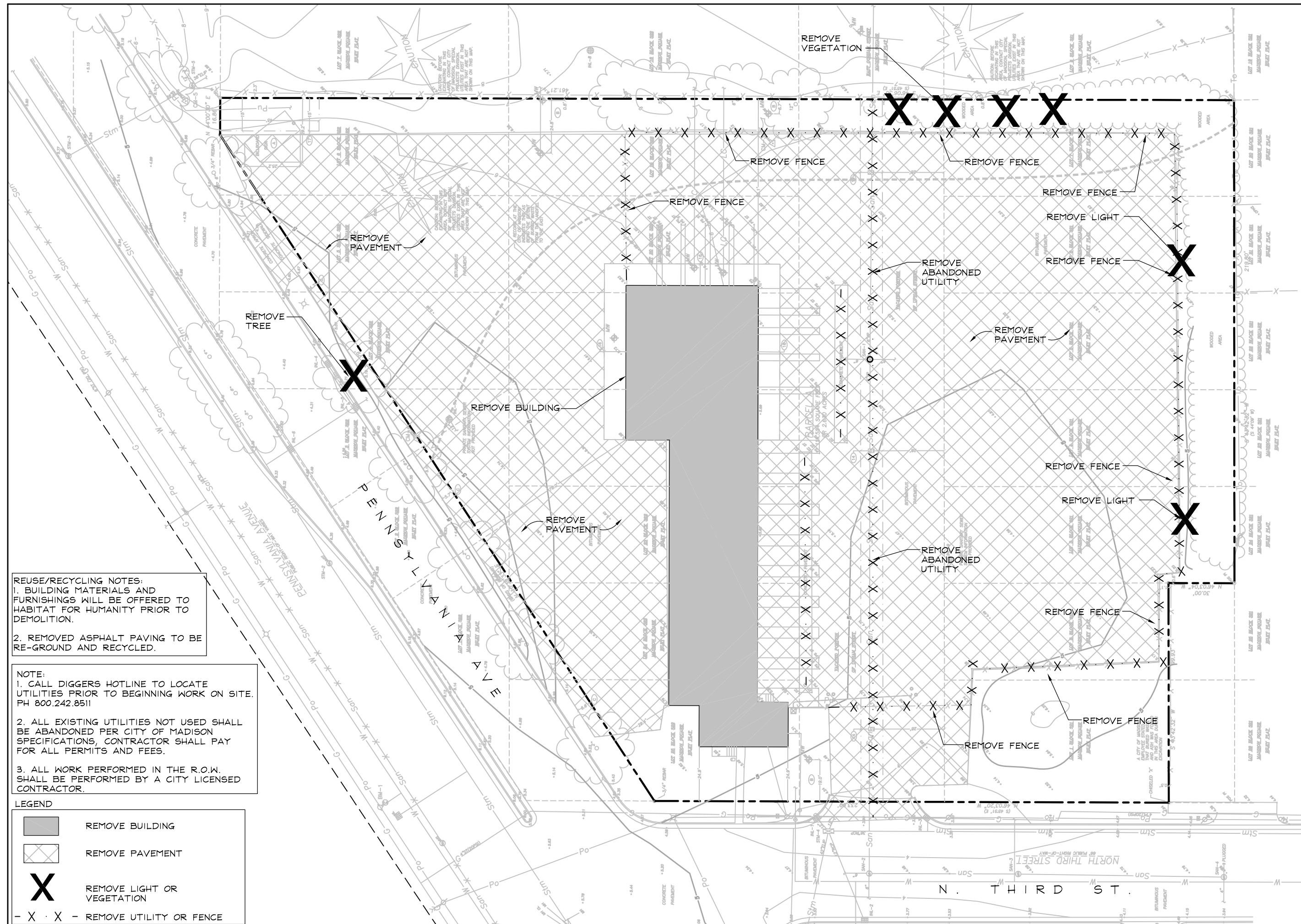
Drawn By: AW
Checked By: CT
File: P-DE
Issued For: CUP
Issue Date: 06/22/05
Project No. 2090

Sheet Title
DEMOLITION
PLAN



Sheet Number





C-3



REUSE/RECYCLING NOTES:
1. BUILDING MATERIALS AND FURNISHINGS WILL BE OFFERED TO HABITAT FOR HUMANITY PRIOR TO DEMOLITION.
2. REMOVED ASPHALT PAVING TO BE RE-GROUND AND RECYCLED.

NOTE:
1. CALL DIGGERS HOTLINE TO LOCATE UTILITIES PRIOR TO BEGINNING WORK ON SITE. PH 800.242.8511
2. ALL EXISTING UTILITIES NOT USED SHALL BE ABANDONED PER CITY OF MADISON SPECIFICATIONS, CONTRACTOR SHALL PAY FOR ALL PERMITS AND FEES.
3. ALL WORK PERFORMED IN THE R.O.W. SHALL BE PERFORMED BY A CITY LICENSED CONTRACTOR.

LEGEND

-  REMOVE BUILDING
-  REMOVE PAVEMENT
-  REMOVE LIGHT OR VEGETATION
-  REMOVE UTILITY OR FENCE



VIEW FROM N. THIRD STREET LOOKING NORTHEAST



VIEW FROM PENNSYLVANIA AVENUE LOOKING SOUTHEAST



VIEW FROM N. THIRD STREET LOOKING NORTH



VIEW FROM PENNSYLVANIA AVENUE AND THIRD STREET
LOOKING NORTHEAST



VIEW TO PROPERT ADJACENT TO KELLIHER FIELD



VIEW FROM N. THIRD STREET LOOKING NORTHEAST



SCHREIBER / ANDERSON
ASSOCIATES, INC.
717 John Nolen Drive
Madison, WI 53713
Ph. 608.255.0800
Fx. 608.255.7750
www.saa-madison.com

Professional Seal

Revision _____ Date _____

Project Name _____

PDQ
PENNSYLVANIA
AVENUE

CITY OF MADISON
WISCONSIN

Drawn By: AW
Checked By: CT
File: P-EX2
Issued For: CUP
Issue Date: 06/22/05
Project No. 2090

Sheet Title
EXISTING SITE
PHOTOS

Sheet Number

C-2



SCHREIBER / ANDERSON
ASSOCIATES, INC.
717 John Nolen Drive
Madison, WI 53713
Ph. 608.255.0800
Fx. 608.255.7750
www.saa-madison.com

Professional Seal

Revision _____ Date _____

Project Name _____

PDQ
PENNSYLVANIA
AVENUE

CITY OF MADISON
WISCONSIN

Drawn By: AW
Checked By: CT
File: P-EX
Issued For: CUP
Issue Date: 06/22/05
Project No. 2090

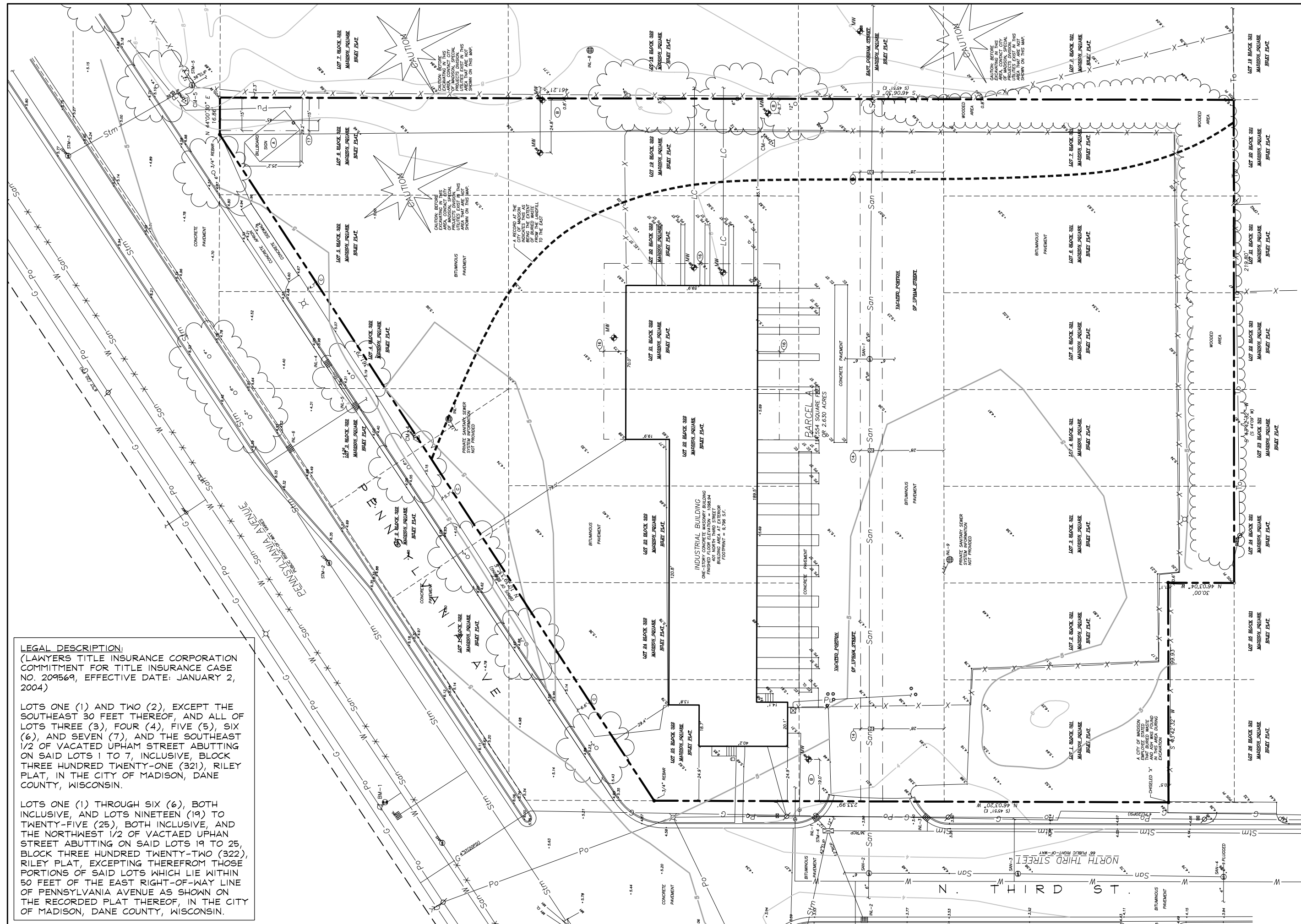
Sheet Title

EXISTING
CONDITIONS



Sheet Number

C-1



LEGAL DESCRIPTION:
(LAWYERS TITLE INSURANCE CORPORATION
COMMITMENT FOR TITLE INSURANCE CASE
NO. 209569, EFFECTIVE DATE: JANUARY 2,
2004)

LOTS ONE (1) AND TWO (2), EXCEPT THE
SOUTHEAST 30 FEET THEREOF, AND ALL OF
LOTS THREE (3), FOUR (4), FIVE (5), SIX
(6), AND SEVEN (7), AND THE SOUTHEAST
1/2 OF VACATED UPHAM STREET ABUTTING
ON SAID LOTS 1 TO 7, INCLUSIVE, BLOCK
THREE HUNDRED TWENTY-ONE (321), RILEY
PLAT, IN THE CITY OF MADISON, DANE
COUNTY, WISCONSIN.

LOTS ONE (1) THROUGH SIX (6), BOTH
INCLUSIVE, AND LOTS NINETEEN (19) TO
TWENTY-FIVE (25), BOTH INCLUSIVE, AND
THE NORTHWEST 1/2 OF VACATED UPHAM
STREET ABUTTING ON SAID LOTS 19 TO 25,
BLOCK THREE HUNDRED TWENTY-TWO (322),
RILEY PLAT, EXCEPTING THEREFROM THOSE
PORTIONS OF SAID LOTS WHICH LIE WITHIN
50 FEET OF THE EAST RIGHT-OF-WAY LINE
OF PENNSYLVANIA AVENUE AS SHOWN ON
THE RECORDED PLAT THEREOF, IN THE CITY
OF MADISON, DANE COUNTY, WISCONSIN.



SOUTH ELEVATION

1/4"=1'-0"



EAST ELEVATION

1/4"=1'-0"



WEST ELEVATION

1/4"=1'-0"



NORTH ELEVATION

1/4"=1'-0"

- DIMENSIONAL ASPHALT SHINGLES
- GUTTER / FASCIA
- EFS
- BLACK ANOD ALUM FRAMING, CLR GLASS
- LAZER BAR

- STONE SILL
- BURNISHED CMU VENEER BAND
- SPLIT-FACE CMU

- 15'-0"
- 10'-0"
- 8'-8"
- 4"
- 3'-0"
- 2'-4"
- 8"
- 1'-0"
- 3'-0"
- 1'-0"



SCHREIBER / ANDERSON
ASSOCIATES, INC.
717 John Nolen Drive
Madison, WI 53713
Ph. 608.255.0800
Fx. 608.255.7750
www.saa-madison.com

Professional Seal

Revision _____ Date _____

Project Name _____

PDQ
PENNSYLVANIA
AVENUE

CITY OF MADISON
WISCONSIN

Drawn By: _____
Checked By: _____
File: P-A2
Issued For: CUP
Issue Date: 06/22/05
Project No. 2090

Sheet Title

**BUILDING
ELEVATIONS**

(SCALE INDICATED FOR
24"x36" SHEET)



Sheet Number

A-2

© COPYRIGHT
These plans and designs depicted therein, including but not limited to, the overall form, arrangement and composition of spaces and elements of the design, are protected under Copyright Laws. Collectively they are the property of Thomas W. McCoy. Any copying or other unauthorized use can result in the cessation of such construction or the demolition of such resultant construction.



SCHREIBER / ANDERSON
ASSOCIATES, INC.
717 John Nolen Drive
Madison, WI 53713
Ph. 608.255.0800
Fx. 608.255.7750
www.saa-madison.com

Professional Seal

Revision _____ Date _____

Project Name _____

PDQ
PENNSYLVANIA
AVENUE

CITY OF MADISON
WISCONSIN

Drawn By: AW
Checked By: CT
File: PATH
Issued For: CUP
Issue Date: 06/22/05
Project No. 2090

Sheet Title

PATH
CONNECTION
PLAN

(SCALE INDICATED FOR
24"x36" SHEET)



Sheet Number

C-12