

LEGEND

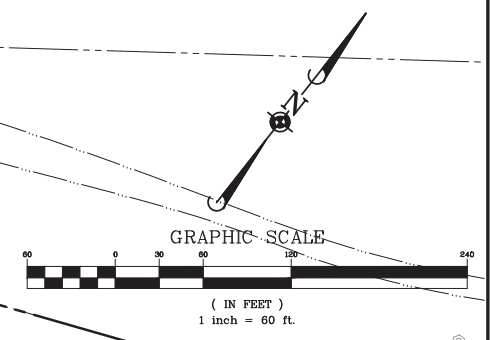
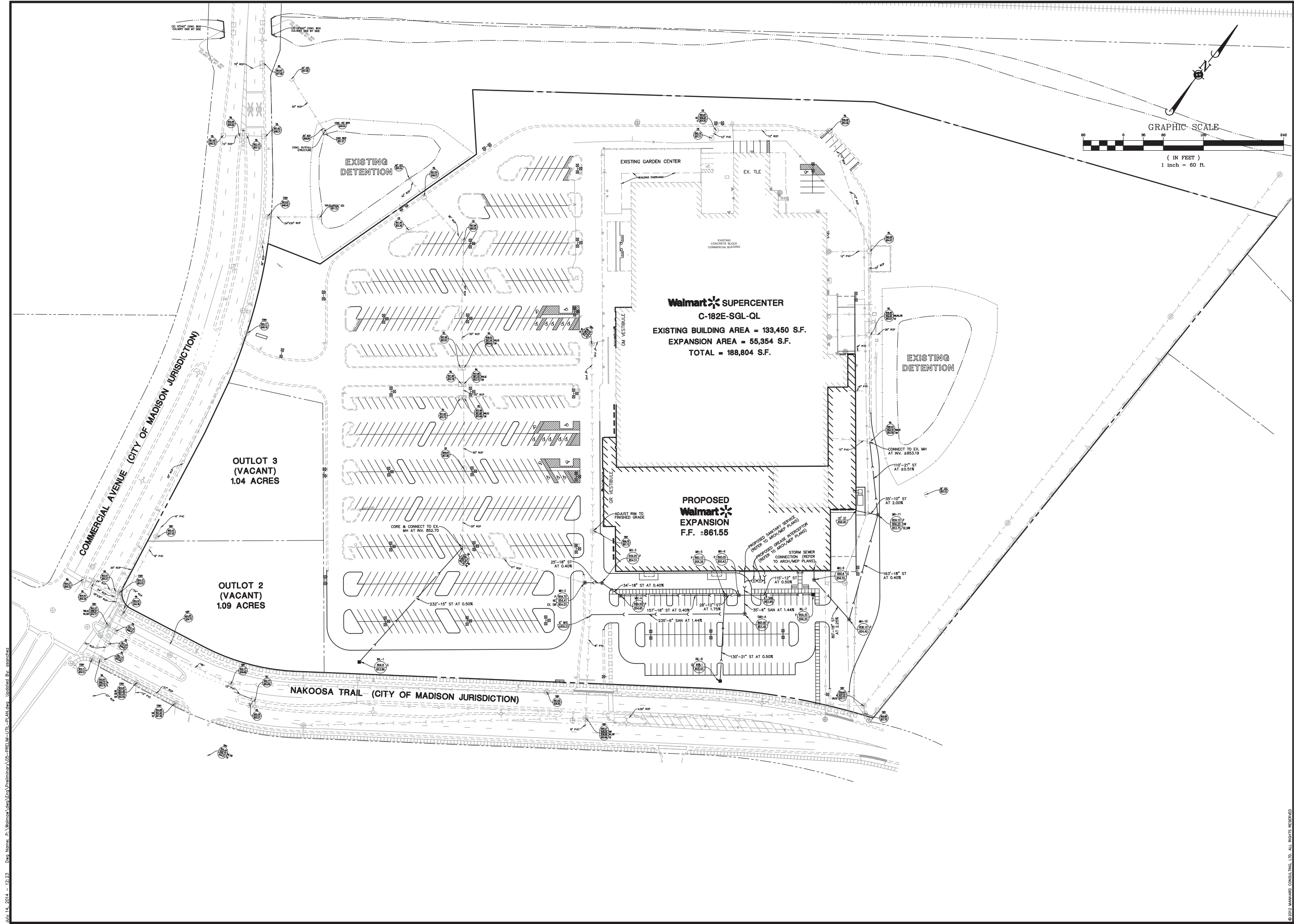
—	= EX. PROPERTY LINE	⊕	= EX. HANDHOLE
- - -	= EX. EASEMENT LINE	⊞	= EX. TELEPHONE PEDESTAL
---	= EX. SECTION LINE	⊠	= EX. TELEPHONE MARKER
---	= EX. SIDEWALK	⊞	= EX. TELEVISION PEDESTAL
---	= EX. CONCRETE CURB & GUTTER	⊠	= EX. TELEVISION LINE MARKER
---	= EX. DEPRESSED CURB	⊞	= EX. UTILITY POLE
---	= EX. EDGE OF PAVEMENT	⊞	= EX. UTILITY POLE WITH LIGHT
---	= EX. CHAIN-LINK FENCE	⊞	= EX. GUY WIRE
---	= EX. OVERHEAD WIRES	⊞	= EX. LIGHT STANDARD
---	= EX. TREE/BRUSH LINE	⊞	= EX. STREET LIGHT
---	= EX. WATER LINE	⊞	= EX. WALL LIGHT
---	= EX. LANDSCAPE AREA	⊞	= EX. TRAFFIC SIGNAL
---	= EX. GUARD RAIL	⊞	= EX. TRAFFIC SIGNAL WITH ARM
⊕	= EX. MISCELLANEOUS MANHOLE (MH)	⊞	= EX. TRAFFIC SIGNAL MANHOLE
⊕	= EX. STORM MANHOLE (MH)	⊞	= EX. SIGN
⊕	= EX. STORM CATCH BASIN (CB)	⊞	= EX. DOUBLE POLE SIGN
⊕	= EX. STORM INLET (INL)	⊞	= EX. MAILBOX
⊕	= EX. FLARED END SECTION (FES)	⊞	= EX. BOLLARD
⊕	= EX. STORM SEWER MARKER	⊞	= EX. FLAG POLE
⊕	= EX. SANITARY MANHOLE (SMH)	⊞	= EX. FIRE SIAMASE/ALARM BOX
⊕	= EX. CLEANOUT	⊞	= EX. AIR CONDITIONING UNIT
⊕	= EX. SANITARY SEWER MARKER	⊞	= EX. HANDICAPPED PARKING
⊕	= EX. FIRE HYDRANT/AUX. VALVE	⊞	= EX. BUSHES
⊕	= EX. VALVE BOX	⊞	= EX. DECIDUOUS TREE WITH TRUNK DIAMETER IN INCHES
⊕	= EX. VALVE VAULT (V.V.)	⊞	= EX. CONIFEROUS TREE WITH HEIGHT IN FEET
⊕	= EX. WATER METER	⊞	= EX. DECIDUOUS TREE WITH TRUNK DIAMETER IN INCHES AND TREE TAG NUMBER
⊕	= EX. BUFFALO BOX	CONC.	= CONCRETE
⊕	= EX. AUXILIARY VALVE	D.S.	= DOWN SPOUT
⊕	= EX. WELL HEAD	⊞	= SPRINKLER CONTROL BOX
⊕	= EX. WATER MARKER	---	= EX. PARKING STRIPING
⊕	= EX. GAS VALVE		
⊕	= EX. GAS METER		
⊕	= EX. JULIE GAS MARKER		
⊕	= EX. ELECTRICAL METER		
⊕	= EX. ELECTRICAL MANHOLE		
⊕	= EX. JULIE ELECTRIC MARKER		

REVISIONS
 DATE
Manhard CONSULTING LTD.
 200 Wisconsin Avenue, Suite 1000, Madison, WI 53703
 608.261.1111
 Fax: 608.261.1112
 www.manhardconsulting.com
 Environmental Science • Landscaping Architecture • Planning
 Construction Management • Environmental Staircases • Landscaping Architecture • Planning

PROPOSED WAL-MART SUPERCENTER NO. 2335-11
 CITY OF MADISON, DANE COUNTY, WISCONSIN
 EXISTING CONDITIONS PLAN

PROJ. MGR.: TTR
 PROJ. ASSOC.: RJS
 DRAWN BY: MH
 DATE: 6-24-14
 SCALE: 1"=60'
 SHEET
1 OF 11
 WALMAW 120750

July 14, 2014 - 14:25
 Draw Name: P:\Wisconsin\2014\2335-11\2335-11-01-EX-COIG-PLAN.dwg
 Updated By: J.Sander



Walmart SUPERCENTER
 C-182E-SGL-QL
 EXISTING BUILDING AREA = 133,450 S.F.
 EXPANSION AREA = 55,354 S.F.
 TOTAL = 188,804 S.F.

PROPOSED
Walmart
 EXPANSION
 F.F. ≈ 861.55

COMMERCIAL AVENUE (CITY OF MADISON JURISDICTION)

OUTLOT 3 (VACANT)
 1.04 ACRES

OUTLOT 2 (VACANT)
 1.09 ACRES

NAKOOSA TRAIL (CITY OF MADISON JURISDICTION)

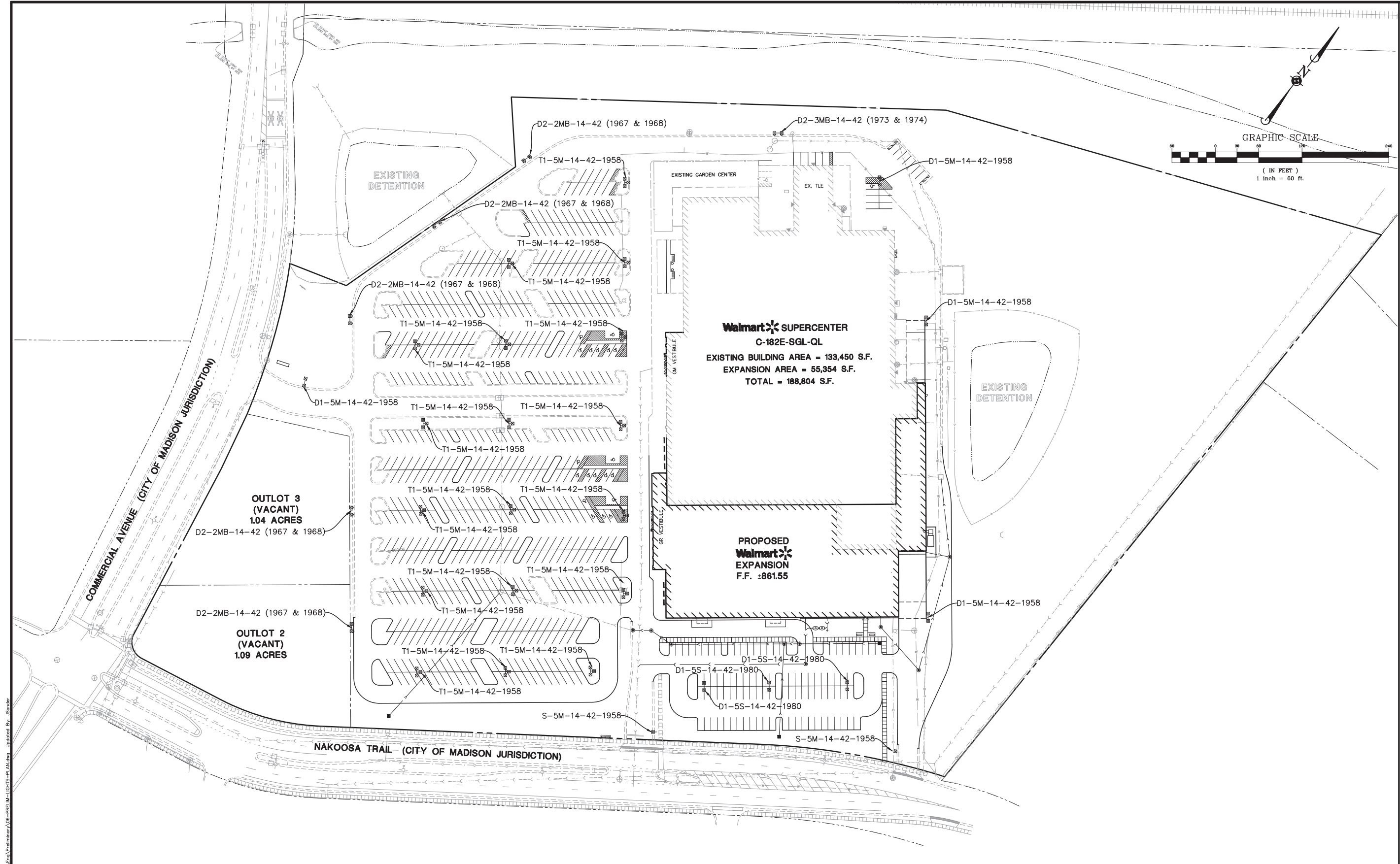
MANHARD CONSULTING LTD.
 Environmental Engineers • Environmental Scientists • Landscape Architects • Planners

PROPOSED WAL-MART SUPERCENTER NO. 2335-11
 CITY OF MADISON, DANE COUNTY, WISCONSIN
 PRELIMINARY UTILITY PLAN

PROJ. MGR.: TIR
 PROJ. ASSOC.: RJS
 DRAWN BY: MH
 DATE: 6-24-14
 SCALE: 1"=60'
 SHEET
5 OF **11**
 WALMAW 120750

July 14, 2014 - 12:23 Day Name: P:\Walmart\Eng\A\Pre\11000\A05-PR-11000-UTIL-PLAN.dwg Updated By: asanchez

© 2014 MANHARD CONSULTING, LTD. ALL RIGHTS RESERVED.



Walmart **SUPERCENTER**
C-182E-SGL-QL
 EXISTING BUILDING AREA = 133,450 S.F.
 EXPANSION AREA = 55,354 S.F.
 TOTAL = 188,804 S.F.

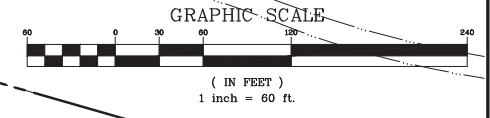
PROPOSED
Walmart **EXPANSION**
 F.F. ±861.55

COMMERCIAL AVENUE (CITY OF MADISON JURISDICTION)

NAKOOSA TRAIL (CITY OF MADISON JURISDICTION)

OUTLOT 3 (VACANT)
1.04 ACRES

OUTLOT 2 (VACANT)
1.09 ACRES



Symbol	Qty	Label	Arrangement	LLF	Description	Arr. Watts	Arr. Lum. Lumens	BUG Rating
	4	D1-5M-14-42-1958	BACK-BACK	0.810	2-ARE-EDG-5M-DA-14-D-UH-BK-525-57K 39ft pole on 3ft base	466	38664	B4-U0-G3
	3	D1-5S-14-42-1980	BACK-BACK	0.810	2-ARE-EDG-5S-DA-14-D-UH-BK-525-57K 39ft pole on 3ft base	466	42958	B4-U0-G2
	5	D2-2MB-14-42 (1967 & 1968)	ROTATED	0.810	1-ARE-EDG-2MB-DA-14-D-UH-BK-525-57K-RL & 1-ARE-EDG-2MB-DA-14-D-UH-BK-525-57K-RR	466	27686	B1-U1-G3
	1	D2-3MB-14-42 (1973 & 1974)	ROTATED	0.810	1-ARE-EDG-3MB-DA-14-D-UH-BK-525-57K-RL & 1-ARE-EDG-3MB-DA-14-D-UH-BK-525-57K-RR	466	25776	B2-U0-G3
	2	S-5M-14-42-1958	SINGLE	0.810	1-ARE-EDG-5M-DA-14-D-UH-BK-525-57K 39ft pole on 3ft base	233	19332	B4-U0-G3
	18	T1-5M-14-42-1958	3 @ 90 DEGREES	0.810	3-ARE-EDG-5M-DA-14-D-UH-BK-525-57K 39ft pole on 3ft base	699	57996	B4-U0-G3

DATE: _____

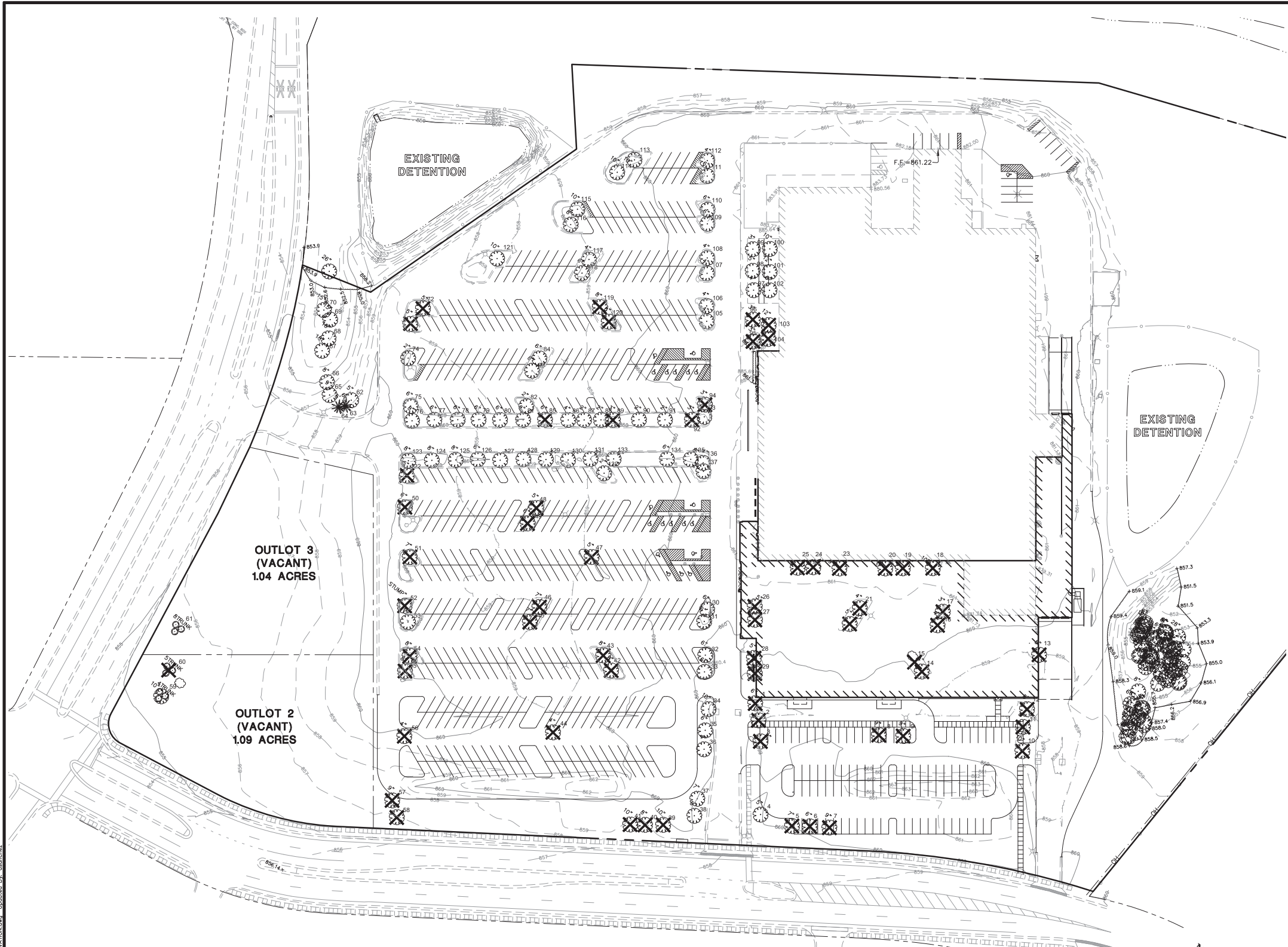
REVISIONS:

NO.	DATE	DESCRIPTION

Manhard
CONSULTING LTD.
 2001 Wisconsin Avenue, Suite 1100, Madison, WI 53703
 Phone: 608/261-1111 Fax: 608/261-1112
 Email: info@manhard.com
 Services: Environmental Science • Landscape Architecture • Planning

PROPOSED WAL-MART SUPERCENTER NO. 2335-11
 CITY OF MADISON, DANE COUNTY, WISCONSIN
 PRELIMINARY LIGHTING PLAN

July 14, 2014, 12:23 Day Name: P:\Walmart\Org\Eng\Prelim\Lighting\PLAN.dwg Updated By: JScuder



Tree Survey

Tree Number	DBH (inches)	Scientific Name	Common Name	Condition (1-5)	Form (1-5)	Removal	Notes
1	6	Tilia cordata	Little Leaf Linden	4	2	X	Deadwood
2	5	Tilia cordata	Little Leaf Linden	2	2		
3	7	Tilia cordata	Little Leaf Linden	2	2	X	
4	5	Acer saccharinum	Silver Maple	2	2		
5	7	Fraxinus americana	White Ash	1	1	X	
6	6	Fraxinus americana	White Ash	1	1	X	
7	9	Fraxinus americana	White Ash	1	1	X	
8	9	Gleditsia triacanthos	Honeylocust	1	1	X	
9	9	Gleditsia triacanthos	Honeylocust	1	1	X	
10	10	Gleditsia triacanthos	Honeylocust	1	1	X	
11	8	Gleditsia triacanthos	Honeylocust	1	1	X	
12	8	Gleditsia triacanthos	Honeylocust	1	1	X	
13	5	Gleditsia triacanthos	Honeylocust	1	1	X	
14	4	Gleditsia triacanthos	Honeylocust	2	2	X	
15	4	Gleditsia triacanthos	Honeylocust	2	2	X	
16	3	Malus sp	Crabapple	2	2	X	
17	3	Malus sp	Crabapple	2	2	X	
18	10	Betula nigra	River Birch	2	2	X	
19	3	Crataegus sp	Thornless Hawthorn	1	1	X	
20	3	Crataegus sp	Thornless Hawthorn	1	1	X	
21	4	Gleditsia triacanthos	Honeylocust	2	2	X	
22	5	Gleditsia triacanthos	Honeylocust	2	2	X	
23	9	Betula nigra	River Birch	2	2	X	
24	4	Crataegus sp	Thornless Hawthorn	1	1	X	
25	4	Crataegus sp	Thornless Hawthorn	1	1	X	
26	5	Gleditsia triacanthos	Honeylocust	4	4	X	Deadwood, topped
27	2	Gleditsia triacanthos	Honeylocust	4	4	X	Deadwood
28	5	Gleditsia triacanthos	Honeylocust	3	3	X	
29	4	Gleditsia triacanthos	Honeylocust	3	3	X	
30	6	Gleditsia triacanthos	Honeylocust	2	2		
31	6	Gleditsia triacanthos	Honeylocust	2	2		
32	6	Gleditsia triacanthos	Honeylocust	3	4		Pruned
33	6	Gleditsia triacanthos	Honeylocust	3	4		Pruned
34	10	Tilia cordata	Little Leaf Linden	1	1		
35	6	Tilia cordata	Little Leaf Linden	1	1		
36	4	Tilia cordata	Little Leaf Linden	2	2		
37	7	Acer saccharinum	Silver Maple	2	2		
38	5	Acer rubrum	Red Maple	4	2		
39	10	Fraxinus americana	White Ash	1	1	X	Deadwood
40	8	Fraxinus americana	White Ash	1	1	X	
41	10	Fraxinus americana	White Ash	1	1	X	
42	8	Fraxinus americana	White Ash	2	1	X	
43	8	Fraxinus americana	White Ash	2	1	X	
44	4	Acer saccharinum	Silver Maple	3	2	X	
45	7	Acer saccharinum	Silver Maple	3	2	X	
46	7	Acer saccharinum	Silver Maple	3	2	X	
47	5	Fraxinus americana	White Ash	4	3	X	Deadwood
48	4	Acer rubrum	Red Maple	4	2	X	Deadwood
49	5	Acer rubrum	Red Maple	4	2	X	Deadwood
50	6	Gone		5	5	X	Stump
51	7	Fraxinus americana	White Ash	2	1	X	
52	6	Gone		5	5	X	Stump
53	6	Acer saccharinum	Silver Maple	2	2		
54	8	Fraxinus americana	White Ash	2	2	X	
55	8	Fraxinus americana	White Ash	2	2	X	
56	4	Acer saccharinum	Silver Maple	2	2	X	
57	9	Fraxinus americana	White Ash	3	2	X	
58	10	Fraxinus americana	White Ash	1	1	X	
59	10	Acer negundo	Box Elder	2	3		
60	10	Fraxinus americana	White Ash	2	3	X	Deadwood
61	10	Acer negundo	Box Elder	4	3		Deadwood
62	5	Acer rubrum	Red Maple	4	2		Deadwood
63	6	Pinus strobus	White Pine	3	1		Die Back
64	5	Pinus strobus	White Pine	3	1		
65	9	Acer saccharinum	Silver Maple	1	1		
66	8	Acer saccharinum	Silver Maple	1	1		
67	18	Populus deltoides	Cottonwood	3	2		
68	18	Populus deltoides	Cottonwood	3	2		
69	18	Populus deltoides	Cottonwood	3	2		
70	18	Populus deltoides	Cottonwood	3	2		
71	26	Populus deltoides	Cottonwood	2	2		
72	5	Fraxinus americana	White Ash	3	2	X	
73	6	Fraxinus americana	White Ash	3	2	X	
74	2	Gleditsia triacanthos	Honeylocust	4	2		
75	6	Tilia cordata	Little Leaf Linden	4	2		Die Back, Deadwood
76	6	Tilia cordata	Little Leaf Linden	1	1		
77	6	Tilia cordata	Little Leaf Linden	3	1		
78	6	Tilia cordata	Little Leaf Linden	2	1		
79	6	Tilia cordata	Little Leaf Linden	2	1		
80	6	Tilia cordata	Little Leaf Linden	4	2		Die Back, Deadwood
81	8	Tilia cordata	Little Leaf Linden	3	2		
82	2	Gleditsia triacanthos	Honeylocust	4	2		
83	8	Acer rubrum	Red Maple	4	2		Deadwood
84	6	Acer rubrum	Red Maple	4	2		Deadwood
85	6	Tilia cordata	Little Leaf Linden	5	3	X	Dead
86	4	Tilia cordata	Little Leaf Linden	5	4		Dying, Deadwood
87	2	Tilia cordata	Little Leaf Linden	1	1		
88	2	Tilia cordata	Little Leaf Linden	1	1		
89	2	Tilia cordata	Little Leaf Linden	5	4	X	Dead
90	2	Tilia cordata	Little Leaf Linden	1	1		
91	2	Tilia cordata	Little Leaf Linden	1	1		
92	3	Tilia cordata	Little Leaf Linden	5	4	X	Dead
93	2	Crataegus sp	Thornless Hawthorn	2	3		
94	3	Crataegus sp	Thornless Hawthorn	5	4	X	Dead
95	3	Malus sp	Crabapple	4	3	X	Die back
96	3	Malus sp	Crabapple	5	4	X	Dead
97	3	Malus sp	Crabapple	2	2		
98	5	Malus sp	Crabapple	4	3		Die back
99	3	Acer saccharum	Sugar Maple	4	3		Deadwood
100	10	Gleditsia triacanthos	Honeylocust	2	3		
101	12	Gleditsia triacanthos	Honeylocust	2	3		
102	5	Gleditsia triacanthos	Honeylocust	2	3		
103	12	Gleditsia triacanthos	Honeylocust	2	3	X	
104	12	Gleditsia triacanthos	Honeylocust	2	3	X	
105	4	Crataegus sp	Thornless Hawthorn	1	1		
106	4	Crataegus sp	Thornless Hawthorn	1	1		
107	4	Crataegus sp	Thornless Hawthorn	4	3		Die Back
108	4	Crataegus sp	Thornless Hawthorn	4	3		Die Back
109	6	Gleditsia triacanthos	Honeylocust	2	2		
110	6	Gleditsia triacanthos	Honeylocust	2	2		
111	6	Gleditsia triacanthos	Honeylocust	4	3		Die Back
112	4	Gleditsia triacanthos	Honeylocust	2	2		
113	10	Gleditsia triacanthos	Honeylocust	3	2		
114	10	Gleditsia triacanthos	Honeylocust	2	2		
115	10	Gleditsia triacanthos	Honeylocust	2	2		
116	8	Gleditsia triacanthos	Honeylocust	2	2		
117	4	Gleditsia triacanthos	Honeylocust	3	2		
118	6	Gleditsia triacanthos	Honeylocust	2	2		
119	8	Fraxinus americana	White Ash	3	2	X	
120	8	Fraxinus americana	White Ash	3	2	X	
121	10	Acer saccharinum	Silver Maple	1	1		
122	4	Tilia cordata	Little Leaf Linden	5	4	X	Dead
123	8	Tilia cordata	Little Leaf Linden	3	2		
124	8	Tilia cordata	Little Leaf Linden	3	2		
125	6	Tilia cordata	Little Leaf Linden	3	2		
126	6	Tilia cordata	Little Leaf Linden	4	2		Die Back
127	6	Tilia cordata	Little Leaf Linden	4	2		Die Back
128	6	Tilia cordata	Little Leaf Linden	3	2		
129	6	Tilia cordata	Little Leaf Linden	3	2		
130	6	Tilia cordata	Little Leaf Linden	3	2		
131	6	Tilia cordata	Little Leaf Linden	3	2		
132	2	Gleditsia triacanthos	Honeylocust	2	3		
133	6	Tilia cordata	Little Leaf Linden	2	2		
134	6	Tilia cordata	Little Leaf Linden	4	3		Deadwood, Lean
135	8	Tilia cordata	Little Leaf Linden	4	3		Die Back
136	3	Crataegus sp	Thornless Hawthorn	1	1		
137	3	Crataegus sp	Thornless Hawthorn	1	1		

Tree Preservation Plan
Scale:

1" = 60'-0"



Tree Survey dated 5-30-14
Information Prepared by:

Bollinger Environmental, Inc.
4901 Forest Avenue, Suite C
Downers Grove, Illinois 60515
Phone: 630-968-1960

X Indicates Tree to be Removed

CALL DIGGERS HOTLINE

1-800-242-8511
TOLL FREE
WIS STATUTE 182.0175(1974)
REQUIRES MIN. 3 WORK DAYS
NOTICE BEFORE YOU EXCAVATE
1-800-242-8511

SEAL

Glenn M Christensen, ASLA, RLA
Wisconsin Registered Landscape Architect LA-172

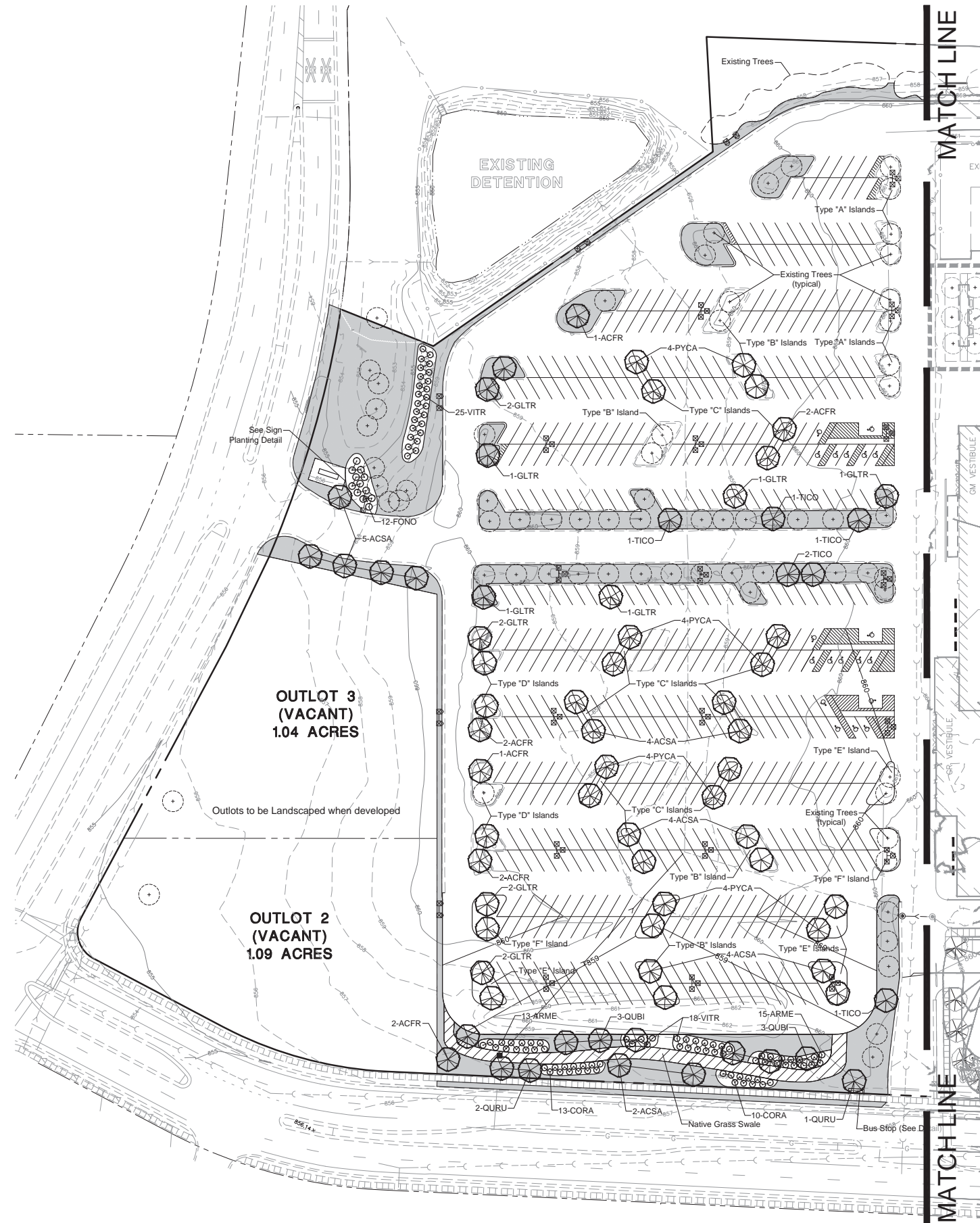
MANHARD CONSULTING LTD.

PROPOSED WAL-MART SUPERCENTER NO. 2335-11
CITY OF MADISON, DANE COUNTY, WISCONSIN
TREE PRESERVATION PLAN

PROJ. MGR.: TTR
PROJ. ASSOC.: RJS
DRAWN BY: BD
DATE: 6-24-14
SCALE: 1"=60'

SHEET
7 OF 11
WALMAW 120750

© 2012 MANHARD CONSULTING, LTD. ALL RIGHTS RESERVED.



Preliminary Plant List

Key	Quantity	Name COMMON/ Botanical	Size
ACFR	15	AUTUMN BLAZE MAPLE/ Acer x freemanii 'Jeffersred'	2-1/2" BB
ACSA	26	GREEN MOUNTAIN SUGAR MAPLE/ Acer saccharum 'Green Mountain'	2-1/2" BB
ALGL	3	BLACK ALDER/ Alnus glutinosa	8' BB
ARME	48	VIKING BLACK CHOKEBERRY/ Aronia melanocarpa 'Viking'	3'
BENI	6	RIVER BIRCH/ Betula nigra	10' BB
CAAC	130	KARL FOERSTER FEATHER REED GRASS/ Calamagrostis acutifolia 'Karl Foerster'	#3 Container
COAP	206	CRANBERRY COTONEASTER/ Cotoneaster apiculatus	#5 Container -18"
CORA	54	GRAY DOGWOOD/ Cornus racemosa	3'
FONO	24	NORTHERN GOLD FORSYTHIA/ Forsythia 'Northern Gold'	3'
GLTR	19	SKYLINE HONEYLOCUST/ Gleditsia triacanthos var. inermis 'Skyline'	2-1/2" BB
HEME	100	HAPPY RETURNS DAYLILY/ Hemerocallis 'Happy Returns'	#1 Container
MISI	146	PURPLE FLAME GRASS/ Miscanthus sinensis 'Purpurascens'	#3 Container
PIAB	5	NORWAY SPRUCE/ Picea abies	6' BB
PIPU	6	GREEN COLORADO SPRUCE/ Picea pungens	6' BB
PYCA	22	ARISTOCRAT PEAR/ Pyrus calleryana 'Aristocrat'	2-1/2" BB
QUBI	12	SWAMP WHITE OAK/ Quercus bicolor	2-1/2" BB
QURU	8	NORTHERN RED OAK/ Quercus rubra borealis	2-1/2" BB
RHAR	498	GRO-LOW FRAGRANT SUMAC/ Rhus aromatica 'Gro-Low'	#5 Container - 18"
RIAL	31	ALPINE CURRANT/ Ribes alpinum	3'
SPBU	252	ANTHONY WATERER SPIREA/ Spirea bumalda 'Anthony Waterer Spirea'	#5 Container -18"
TICO	9	LITTLELEAF LINDEN/ Tilia cordata	2-1/2" BB
VITR	62	AMERICAN CRANBERRYBUSH/ Viburnum trilobum	3'

LEGEND

- TURF AREA - SEEDING
- J.F. NEW/CARDUO STORMWATER SEED MIX

Landscape Plan - West Section
Scale:

1" = 50'-0"



CALL DIGGERS HOTLINE

1-800-242-8511
TOLL FREE
WIS STATUTE 182.0175(1974)
REQUIRES MIN. 3 WORK DAYS
NOTICE BEFORE YOU EXCAVATE
1-800-242-8511

SEAL

Glenn M Christensen, ASLA, RLA
Wisconsin Registered Landscape Architect LA-172

Manhard CONSULTING LTD

2000 Wisconsin Avenue, Suite 1000, Madison, WI 53703
Phone: 608-261-1111 Fax: 608-261-1112
www.manhardconsulting.com

Professional Services • Environmental Sciences • Landscape Architecture • Planning

PROPOSED WAL-MART SUPERCENTER NO. 2335-11
CITY OF MADISON, DANE COUNTY, WISCONSIN
LANDSCAPE PLAN - WEST SECTION

PROJ MGR: JTR
PROJ ASSOC: RJS
DRAWN BY: BD
DATE: 6-24-14
SCALE: 1"=50'
SHEET
9 OF **11**
WALMAW 120750

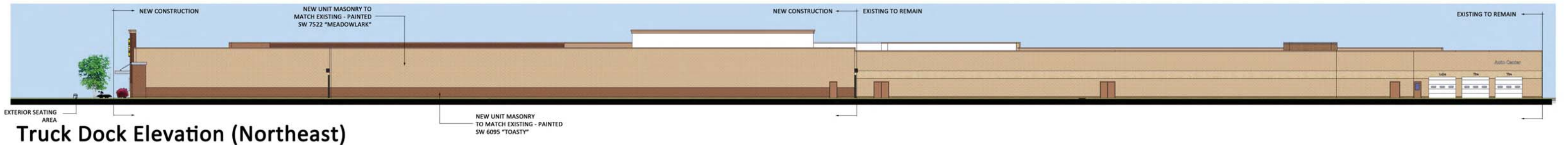
July 14, 2014 - 12:51 Dwg Name: F:\Wisconsin\Eng\Pre\11000\08-10-10-PR-11000-LANDSCAPE.dwg Updated By: Dstz



View from Commercial Avenue



View from Nakoosa Trail



Truck Dock Elevation (Northeast)



Garden Center Elevation (Northwest)



Front Elevation Detail



JULY 15, 2014

MADISON WI #2335-11

BUILDING ELEVATIONS

1