

E. WASHINGTON RETAIL

4302 E. WASHINGTON AVE.
 MADISON, WI

Architecture: Dimension IV - Madison, LLC, Madison, WI
 Civil Engineer: Calkins Engineering, LLC, Madison, WI
 Site Lighting: Schultz Electric Inc., Middleton, WI

LIST OF DRAWINGS

GENERAL

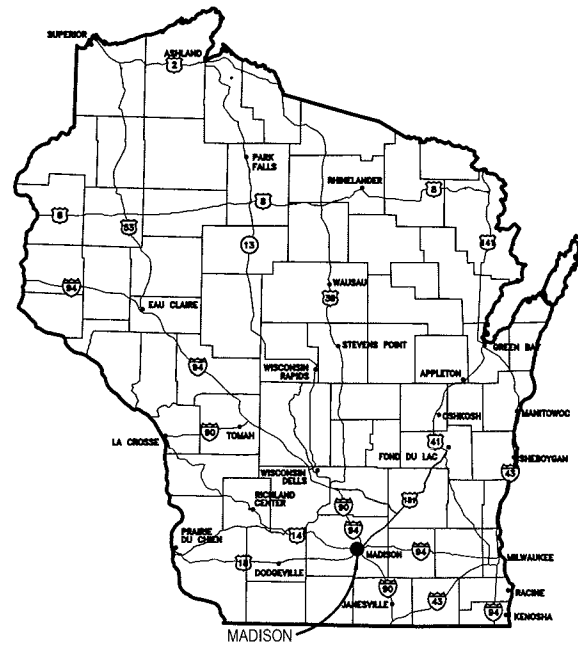
G0.1 COVER SHEET

SITE

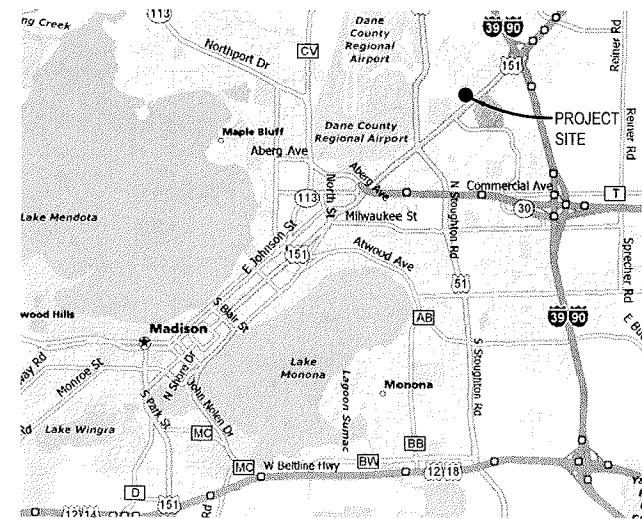
- C1.0 SITE PLAN
- C2.0 GRADING PLAN (CALKINS)
- C3.0 UTILITY PLAN (CALKINS)
- C4.0 EROSION CONTROL PLAN (CALKINS)
- C5.0 DETAILS (CALKINS)
- C5.1 DETAILS (CALKINS)
- L1.0 LANDSCAPE PLAN
- E1.0 SITE LIGHTING PLAN (SCHULTZ)

ARCHITECTURAL

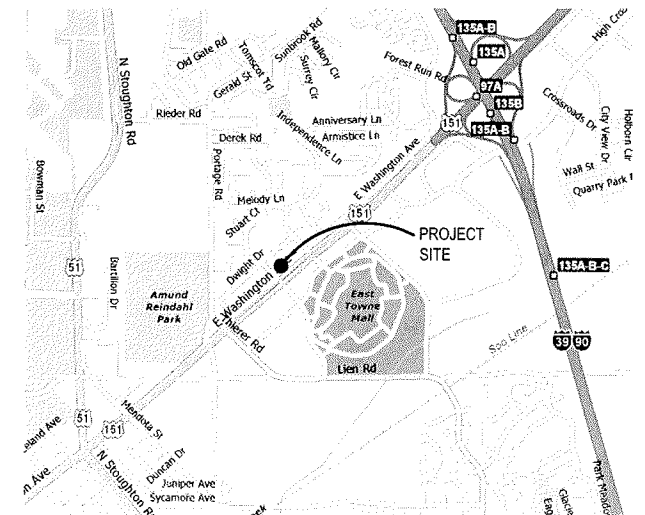
- A1.0 FLOOR PLAN
- A2.0 ELEVATIONS



STATE MAP



CITY MAP



SITE LOCATION MAP

**E. WASHINGTON
 RETAIL**

4302 E. WASHINGTON AVE.
 MADISON, WI

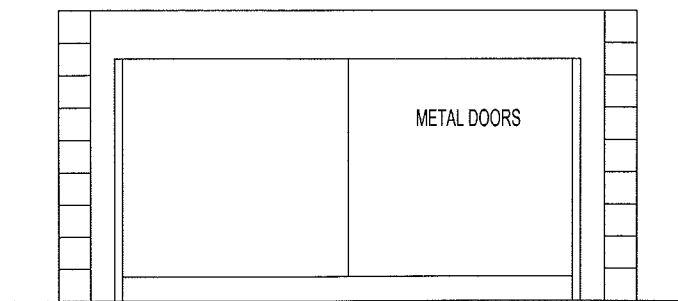
DATE OF ISSUE: 05/07/08

**PRELIMINARY
 NOT FOR
 CONSTRUCTION**

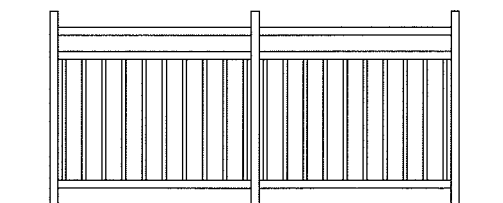
PROJECT #: 08005

SITE PLAN

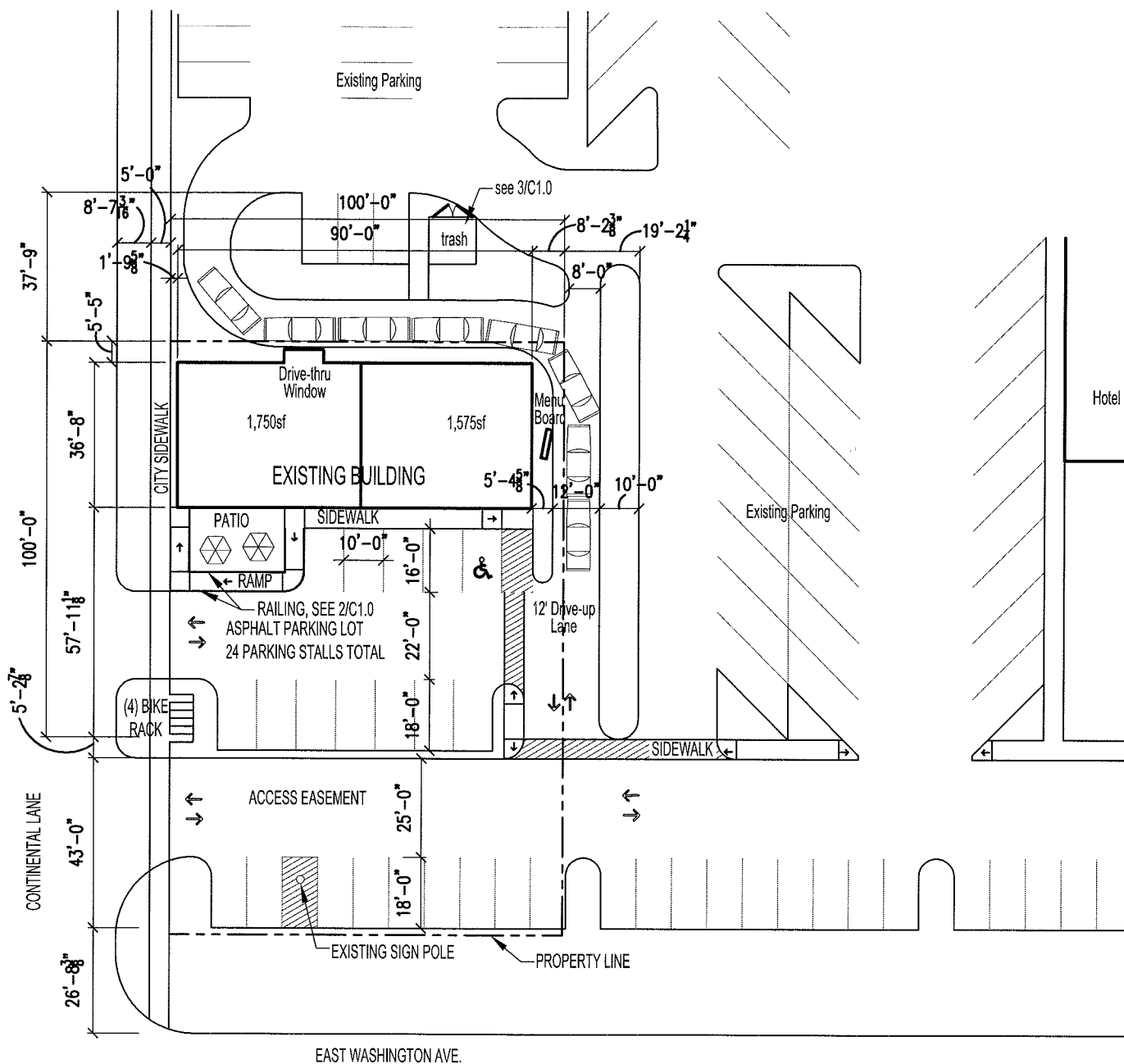
C1.0



3 CMU TRASH ENCLOSURE
 0 2' 4' 8'



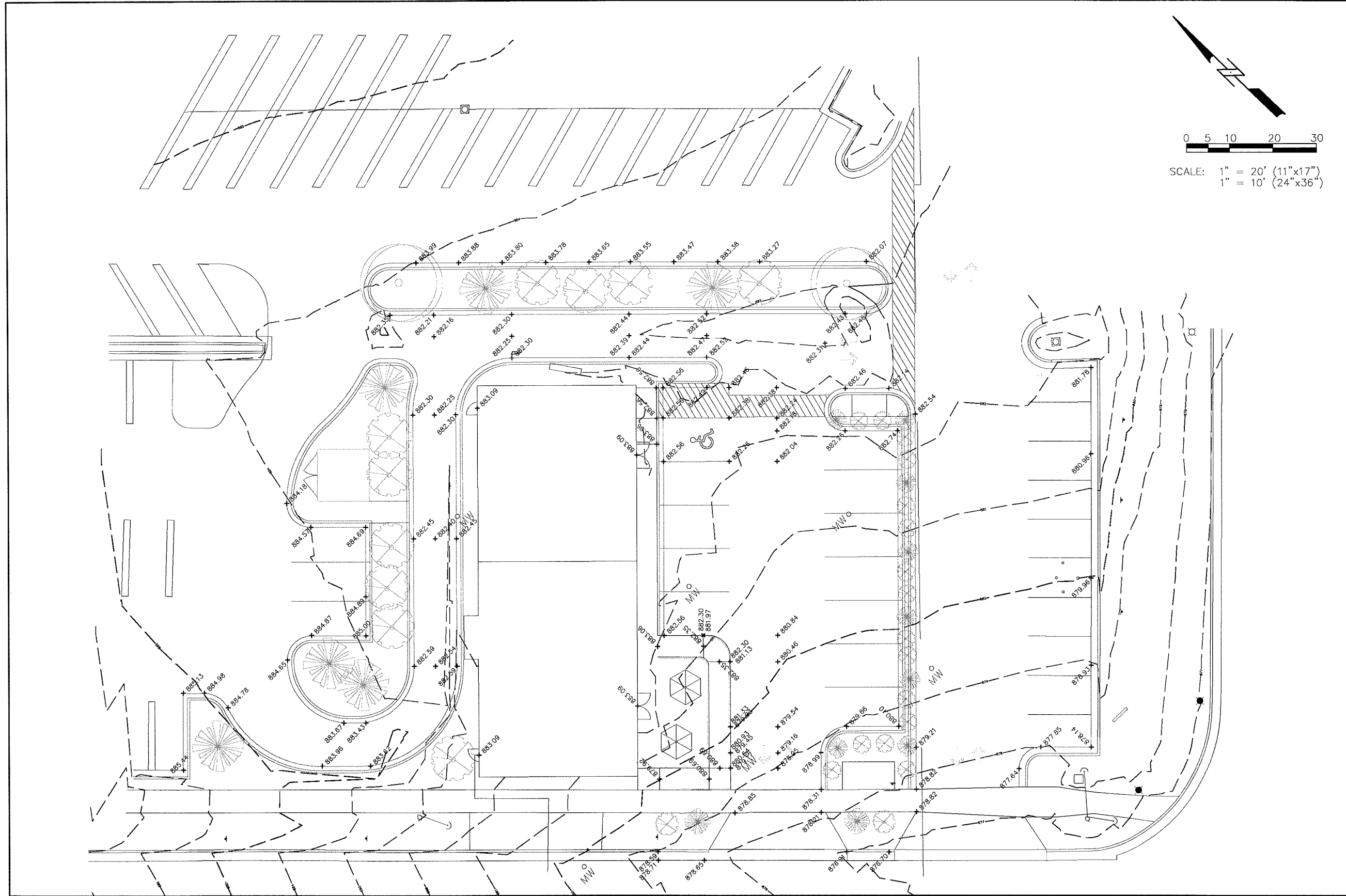
2 METAL RAILING DETAIL
 0 2' 4' 8'



1 SITE PLAN Starbucks West End
 0 20' 40' 80'



NORTH



Calkins Engineering, LLC
 5010 Vegas Road
 Las Vegas, NV 89128
 (702) 838-0444

DATE: 08-08-08
REVISIONS:

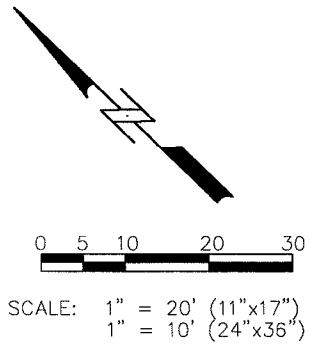
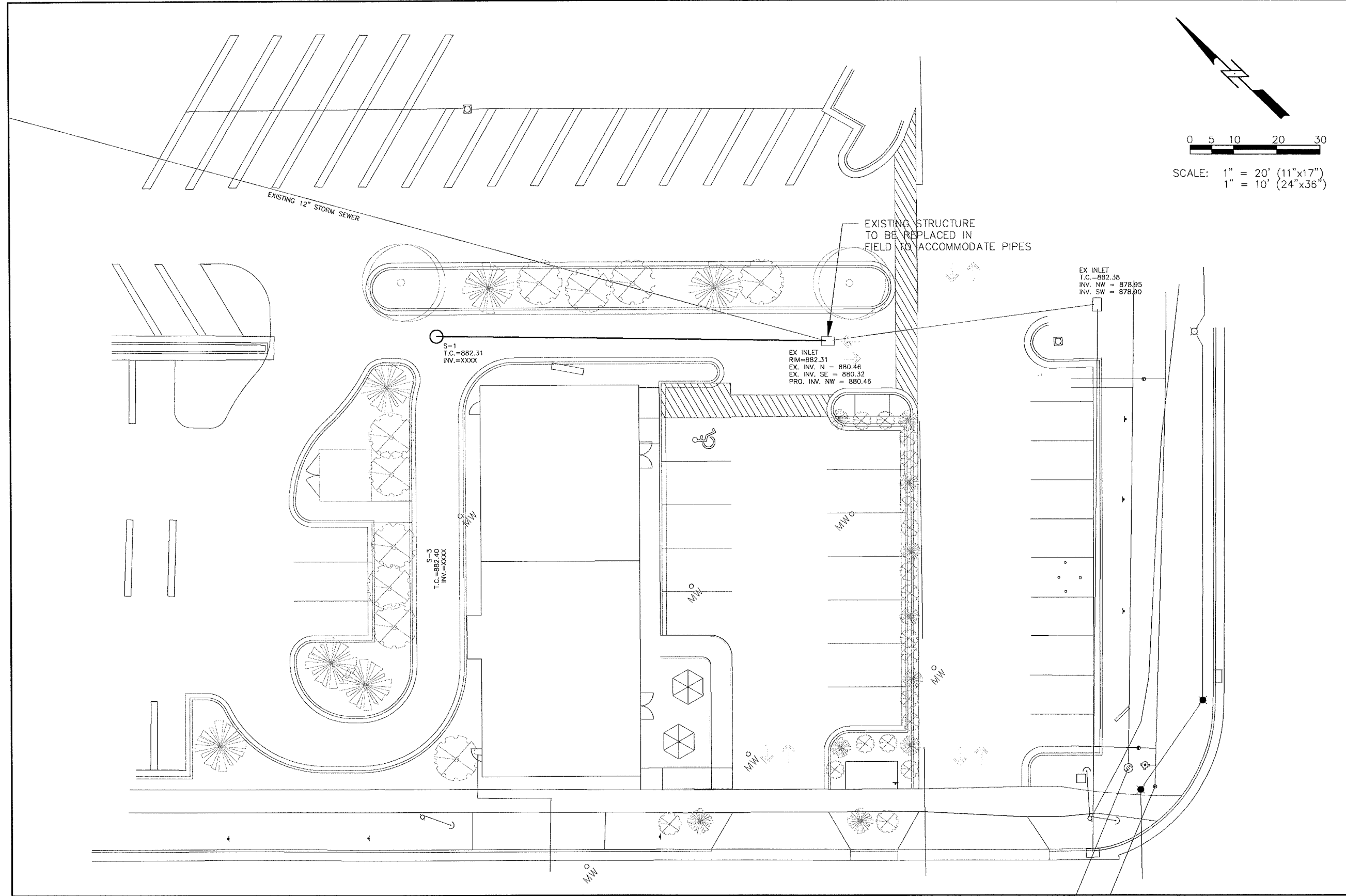
E. WASHINGTON RETAIL
GRADING PLAN


DRAWING NAME : NE28.DWG/DESIGN/DESIGN-BASE.DWG

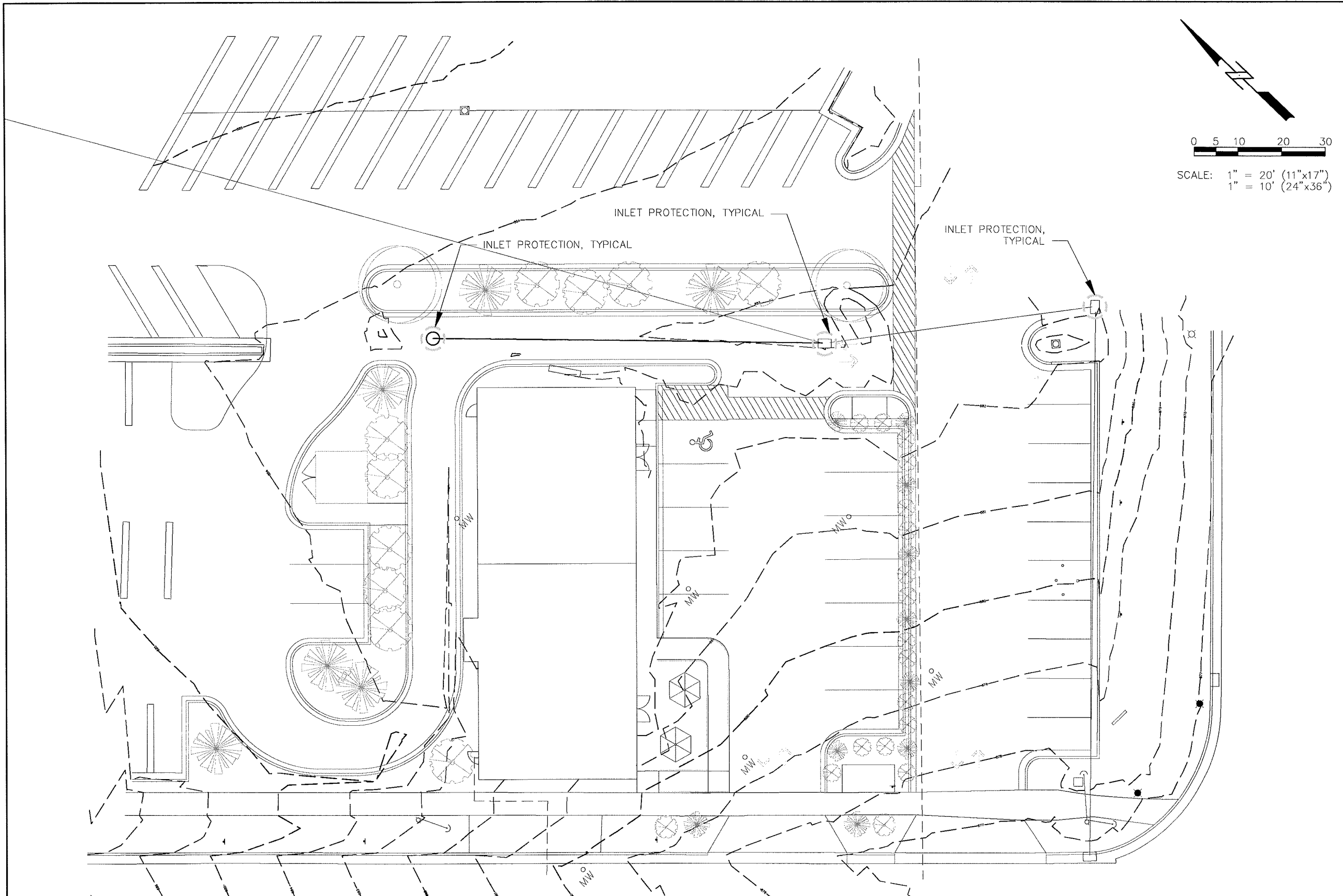
FN: NE28

Calkins Engineering, LLC
 Civil Engineers & Land Surveyors

SHEET
 2.0



 <p>Calkins Engineering, LLC Civil Engineers & Land Surveyors</p>	<p>DATE: 08-20-08</p>								
	<p>REVISIONS:</p> <table border="1"> <tr><td> </td><td> </td></tr> <tr><td> </td><td> </td></tr> <tr><td> </td><td> </td></tr> <tr><td> </td><td> </td></tr> </table>								
<p>DRAWING NAME: 10222\DWG\UTILITY\UTILITY-PLAN.DWG</p>									
<p>E. WASHINGTON RETAIL UTILITY PLAN</p>	<p>FILE: 10222</p>								
<p>Calkins Engineering, LLC Civil Engineers & Land Surveyors</p>	<p>SHEET 3.0</p>								
<p>Calkins Engineering, LLC 5010 Vega Road Madison, WI 53716 (608) 836-0444</p>									



Calkins Engineering, LLC
 5010 Vogue Road
 Madison, WI 53718
 (608) 836-0444

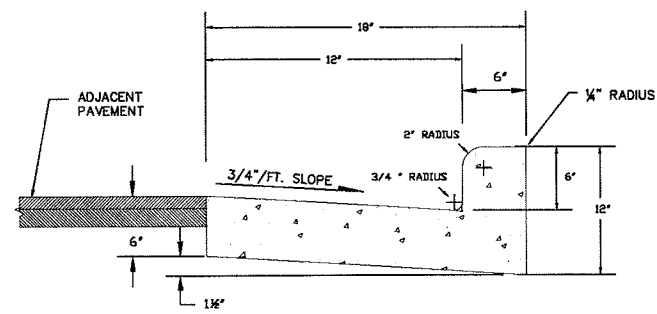
DATE: 08-08-08
REVISIONS

**E. WASHINGTON RETAIL
 EROSION CONTROL PLAN**

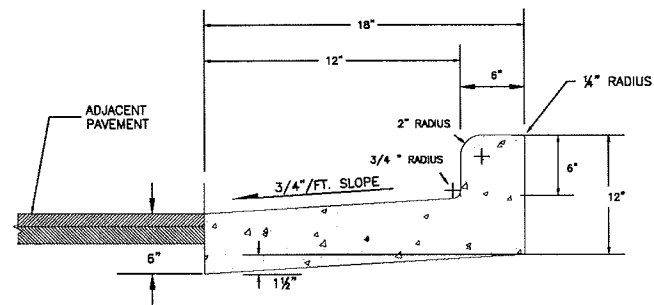
DATE: 08-08-08
 DRAWING NAME: H228\PROJECTS\DESIGN-BUILDING

Calkins Engineering, LLC
 Civil Engineers & Land Surveyors

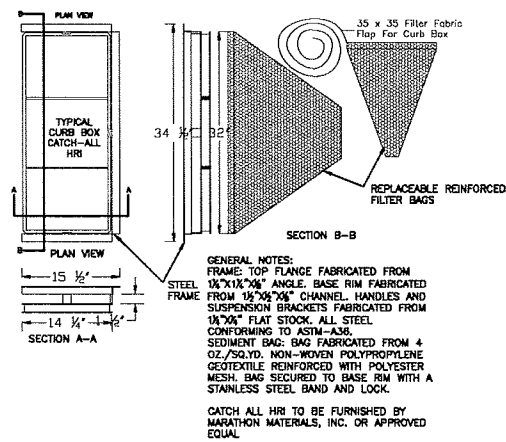
SHEET
 4.0



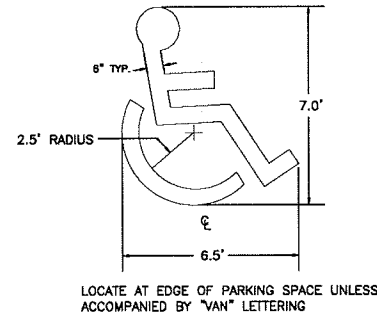
1 18" CONCRETE CURB AND GUTTER
NOT TO SCALE



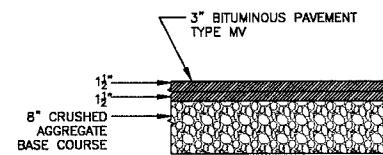
2 18" REJECT CONCRETE CURB AND GUTTER
NOT TO SCALE



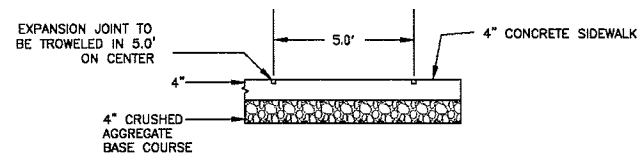
3 CATCH BASIN FILTER INSERT
NOT TO SCALE



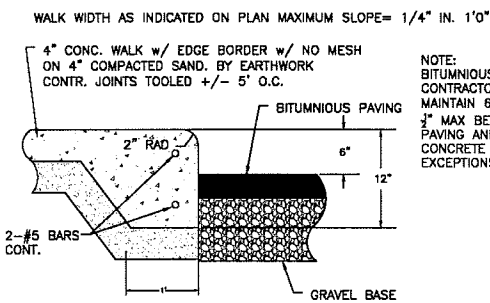
4 ACCESSIBLE PARKING SYMBOL
NOT TO SCALE



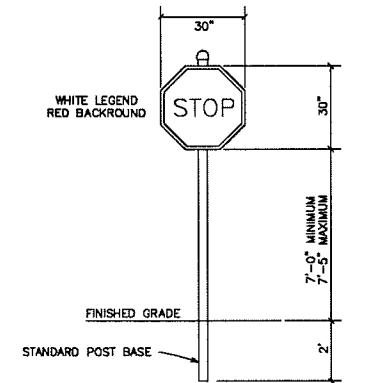
5 PAVEMENT SECTION - PARKING AREA
NOT TO SCALE



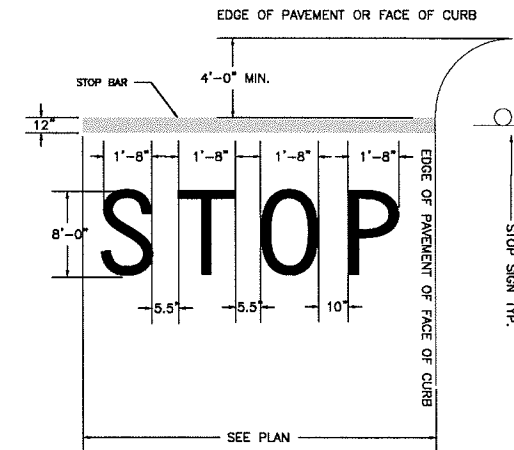
6 CONCRETE SIDEWALK SECTION
NOT TO SCALE



7 THICKENED EDGE @ SIDEWALK
NOT TO SCALE

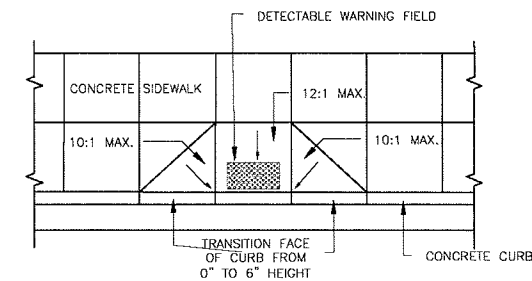


8 STOP SIGN DETAIL
NOT TO SCALE

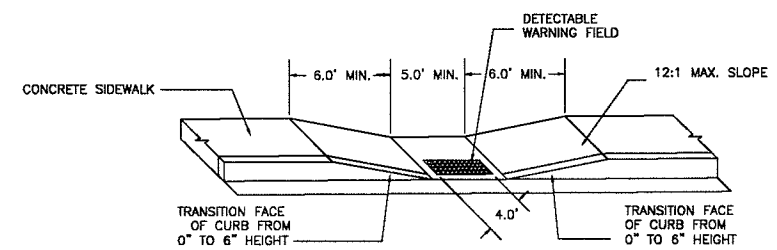


NOTE:
1. WORDS AND ARROWS FOR DRIVEWAYS SHALL BE APPLIED ACCORDING TO REQUIREMENTS AS OUTLINED IN SECTION 3B OF THE MANUAL ON UNIFORM TRAFFIC CONTROL DEVICES FOR STREETS AND HIGHWAYS.
2. THESE WORDS AND BAR ARE TO BE PAINTED REFLECTIVE WHITE.

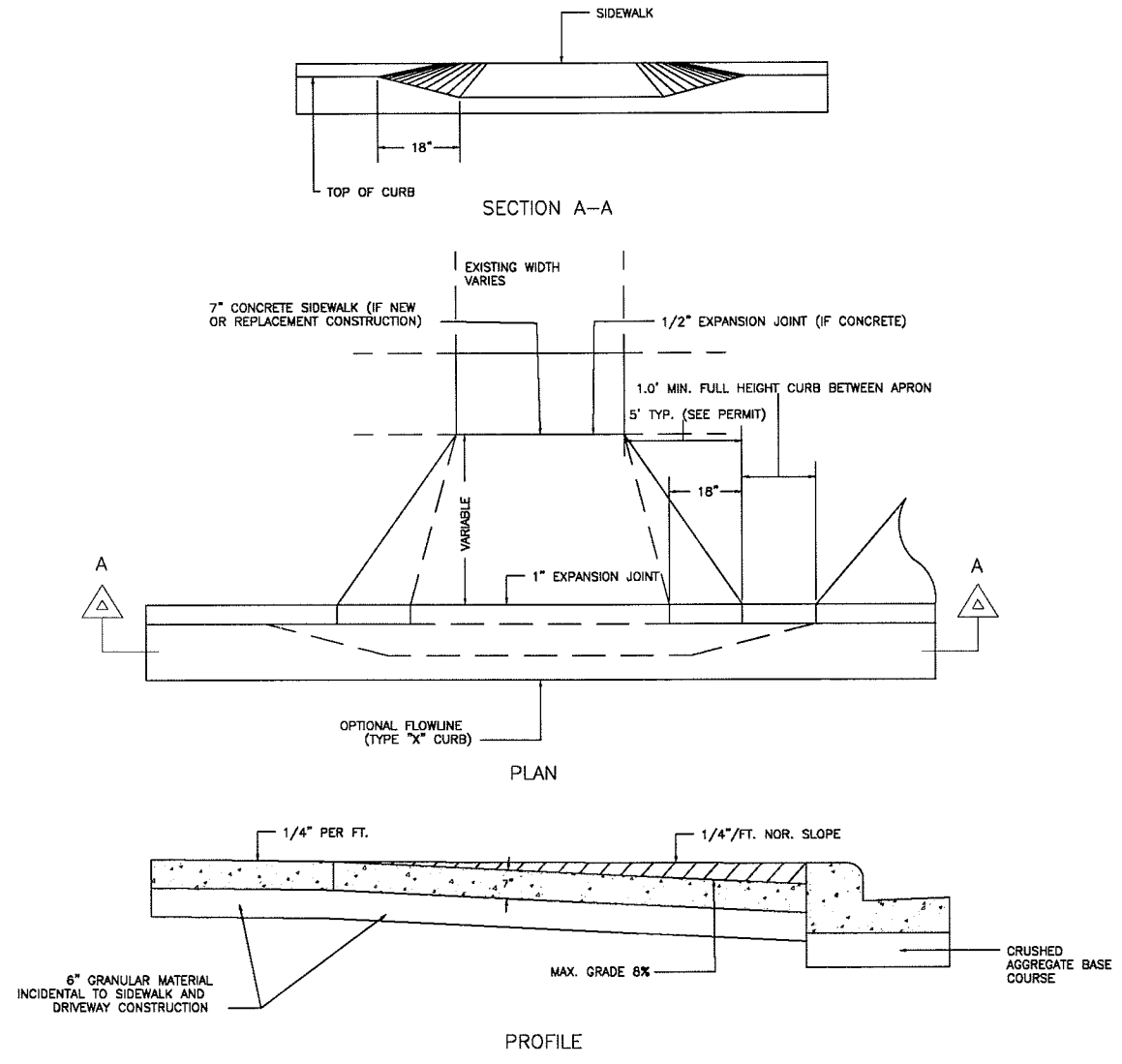
9 STOP BAR DETAIL
NOT TO SCALE



10 SIDEWALK HANDICAP RAMP
NOT TO SCALE



11 DEPRESSED SIDEWALK RAMP
NOT TO SCALE



24 COMMERCIAL DRIVEWAY DETAIL
NOT TO SCALE

Calkins Engineering, LLC
5010 Vogel Road
Columbia, MO 65208
(608) 838-0444

DATE: 06-08-08

REVISIONS:

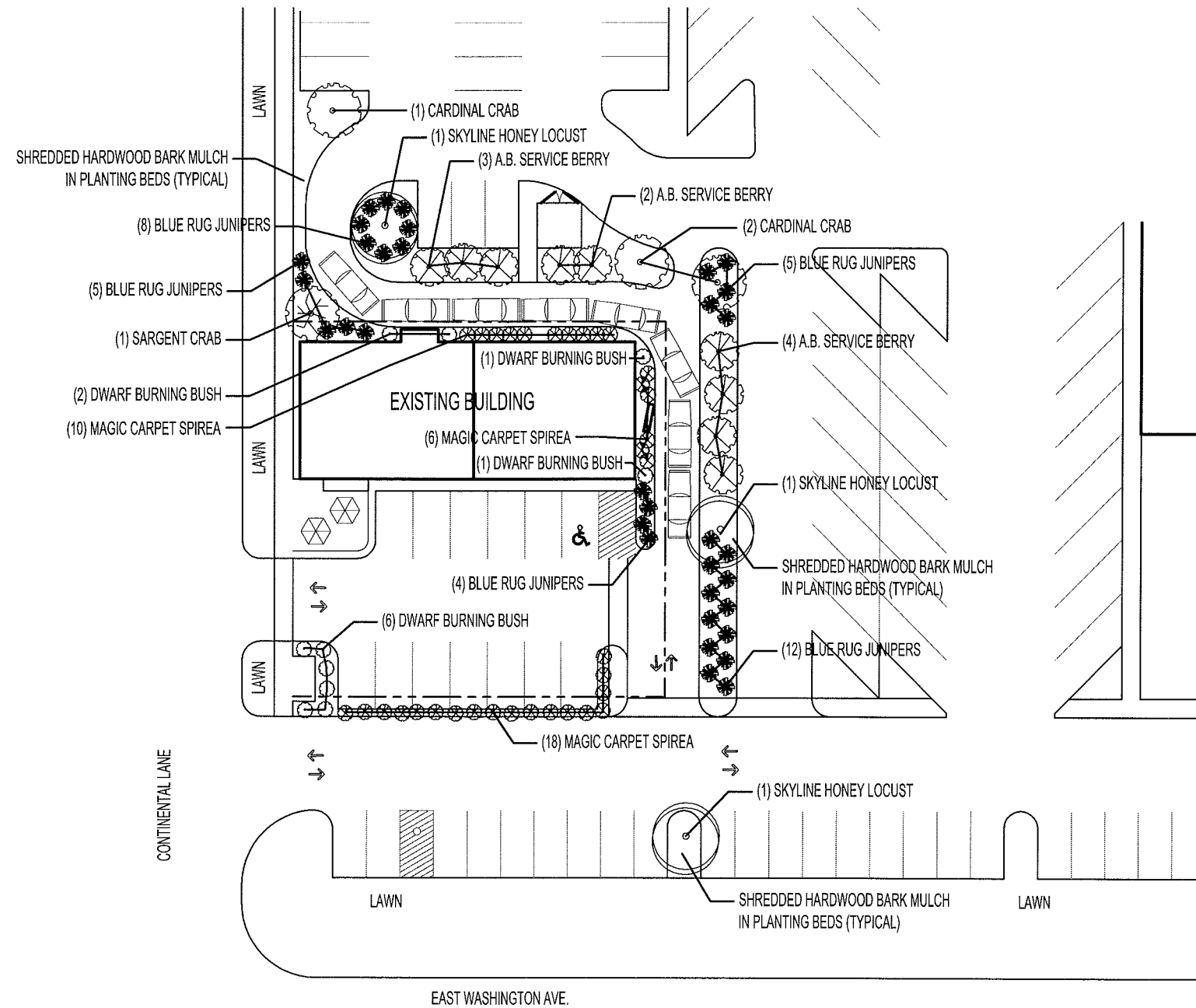
E. WASHINGTON RETAIL
DETAILS

DRAWING NAME: \\calkins\user\jason\jason-8462.dwg

PK: 10238

Calkins Engineering, LLC
Civil Engineers & Land Surveyors

SHEET
5.1



PLANT LIST

QUANTITY	SIZE	TYPE	ROOT
3	2 1/2"	SKYLINE HONEY LOCUST	BB
3	1 1/2"	CARDINAL CRAB	BB
1	1/2"	SARGENT CRAB	BB
9	5'	A.B. SERVICE BERRY	BB
10	24"	DWARF BURNING BUSH	CONT.
34	15"	MAGIC CARPET SPIREA	CONT.
34	29"	BLUE RUG JUNIPER	CONT.

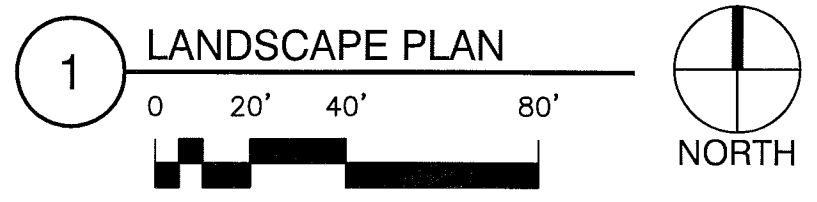
- NOTES:
- RESTORE ALL DISTURBED TURF AREAS WITH TOPSOIL, SEED, FERTILIZER, AND MULCH.
 - FURNISH AND INSTALL 3" OF SHREDDED HARDWOOD BARK MULCH IN ALL PLANTING BEDS.
 - PROVIDE WATERING OF ALL PLANT MATERIAL UNTIL COMPLETION OF LANDSCAPE INSTALLATION.

**E. WASHINGTON
 RETAIL**

4302 E. WASHINGTON AVE.
 MADISON, WI

CONTINENTAL LANE

EAST WASHINGTON AVE.



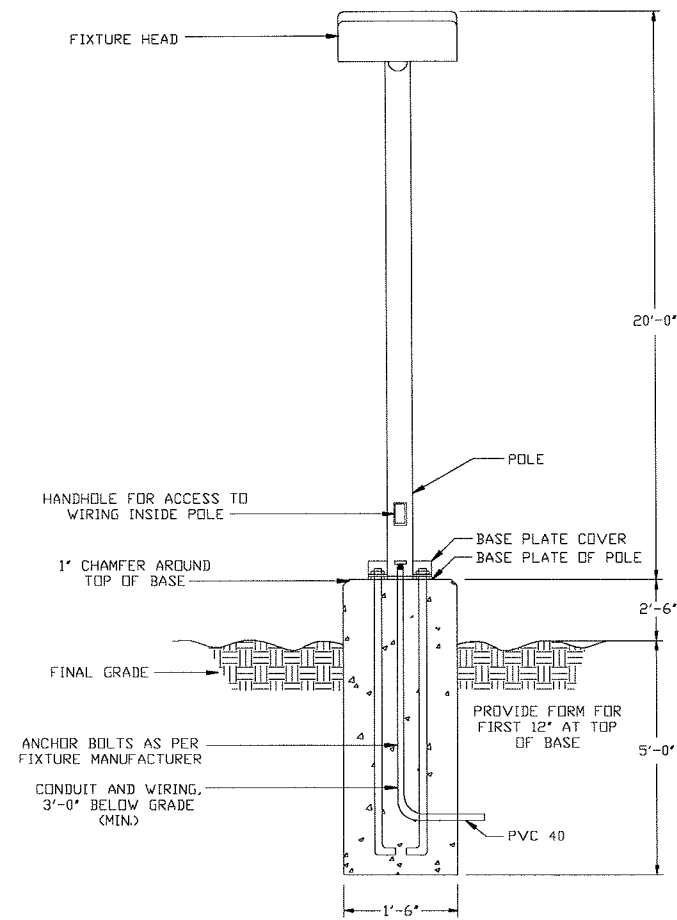
DATE OF ISSUE: 05/07/08

**PRELIMINARY
 NOT FOR
 CONSTRUCTION**

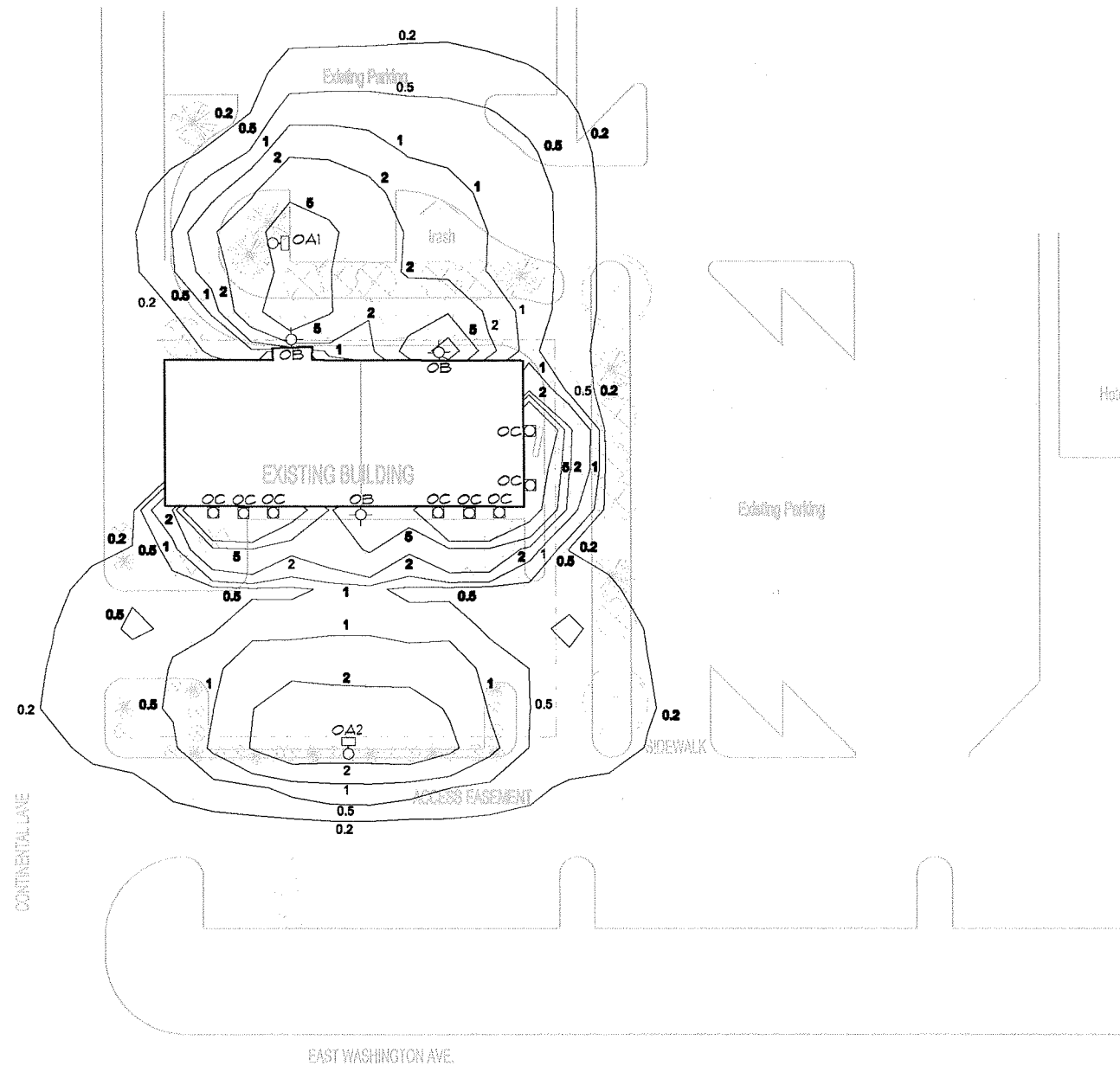
PROJECT #: 08005

LANDSCAPE PLAN

L1.0

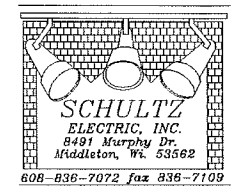


2 SINGLE HEAD POLE DETAIL
SCALE: NA



1 ELECTRICAL SITE LIGHTING PLAN
SCALE: 1" = 20'

LIGHTING FIXTURE SCHEDULE														
TYPE	LIGHTING FIXTURE				MOUNTING	CEILING TYPE	LENS	VOLT	LAMP DATA					NOTES
	DESCRIPTION	MANUFACTURER	CATALOG NO.						NO.	WATT	TYPE	MANUFACTURER	CATALOG NO.	
OA1	SINGLE HEAD SITE LIGHTING FIXTURE	INVE	VXM-250-MH-MT-48-BZ-HS		POLE	NA	GLASS	TBD	1	250W	MH	GE	MVR250	
OA2	SINGLE HEAD SITE LIGHTING FIXTURE	INVE	VXM-250-MH-MT-38-BZ-HS		POLE	NA	GLASS	TBD	1	250W	MH	GE	MVR250	
OB	WALL PACK	LUMARK	MH-IP-T-100-MT		WALL	NA	GLASS	TBD	1	100W	MH	GE	MVR100	
OC	RECESSED DOWNLIGHT	HALO	M120T-1405-1100		RECESSED	SOFFIT	NA	TBD	1	120W	MH	GE	MVR100	



**E. WASHINGTON
RETAIL**

4302 E. WASHINGTON AVE.
MADISON, WI

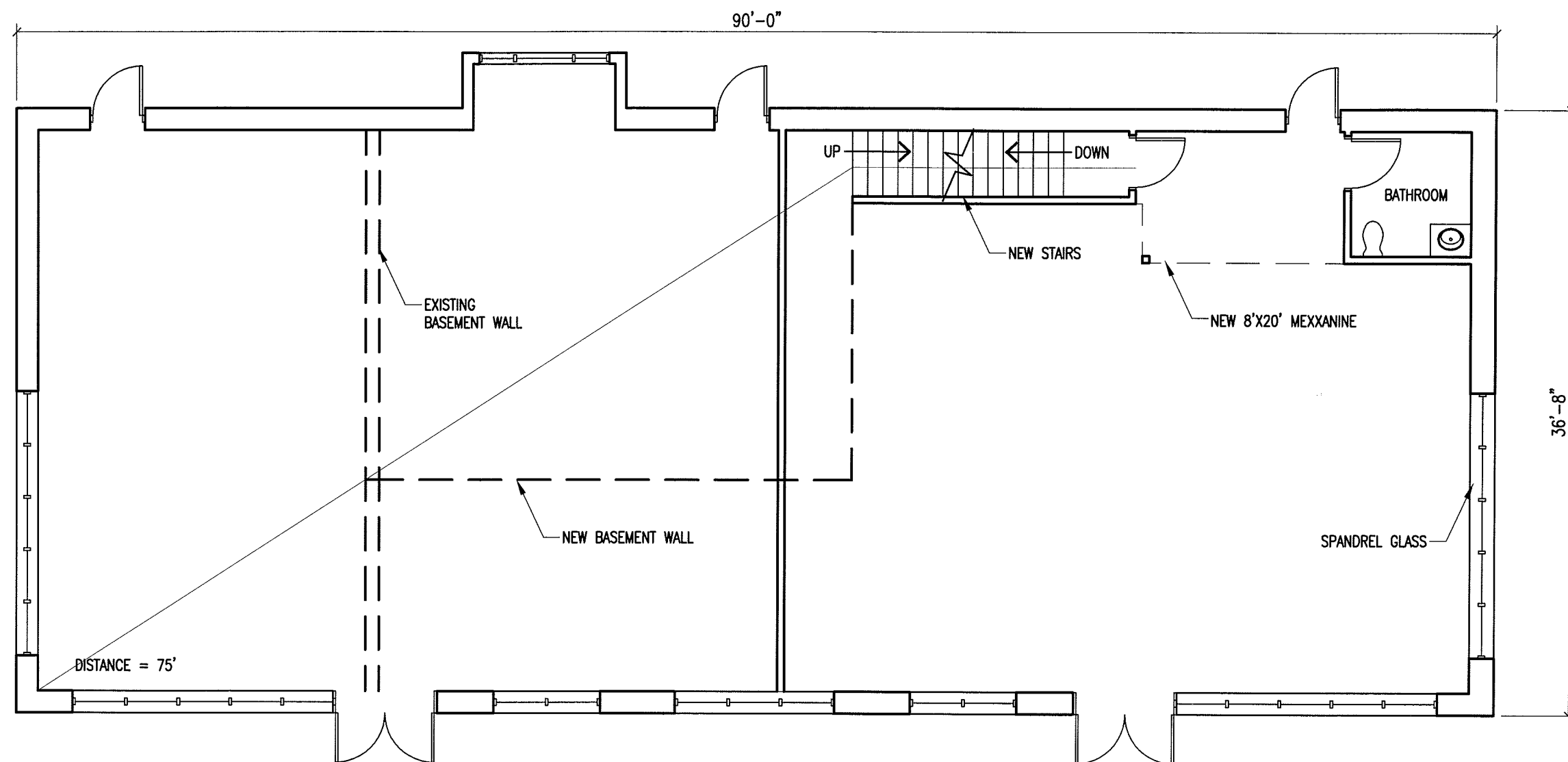
DATE OF ISSUE: 4/28/08

**PRELIMINARY
NOT FOR
CONSTRUCTION**

PROJECT #: XXXX

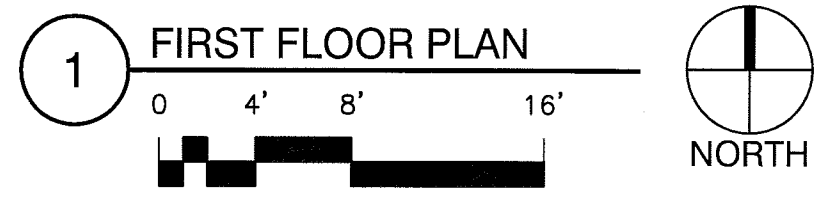
ELECTRICAL SITE PLAN

E1.0



**E. WASHINGTON
 RETAIL**

4302 E. WASHINGTON AVE.
 MADISON, WI



DATE OF ISSUE: 05/07/08

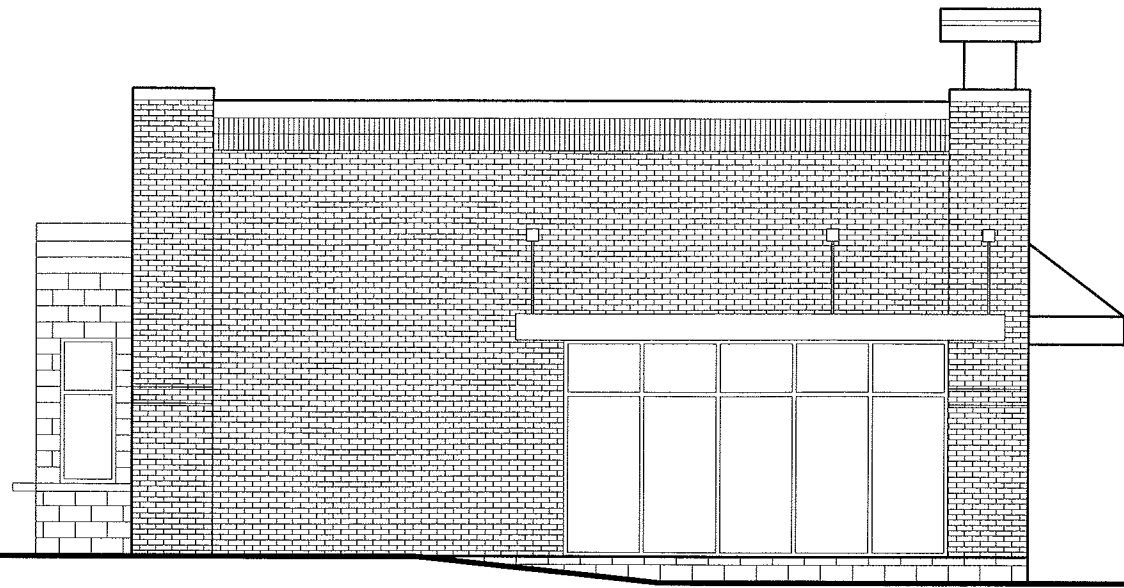
**PRELIMINARY
 NOT FOR
 CONSTRUCTION**

PROJECT #: 08005

FIRST FLOOR PLAN

A1.0

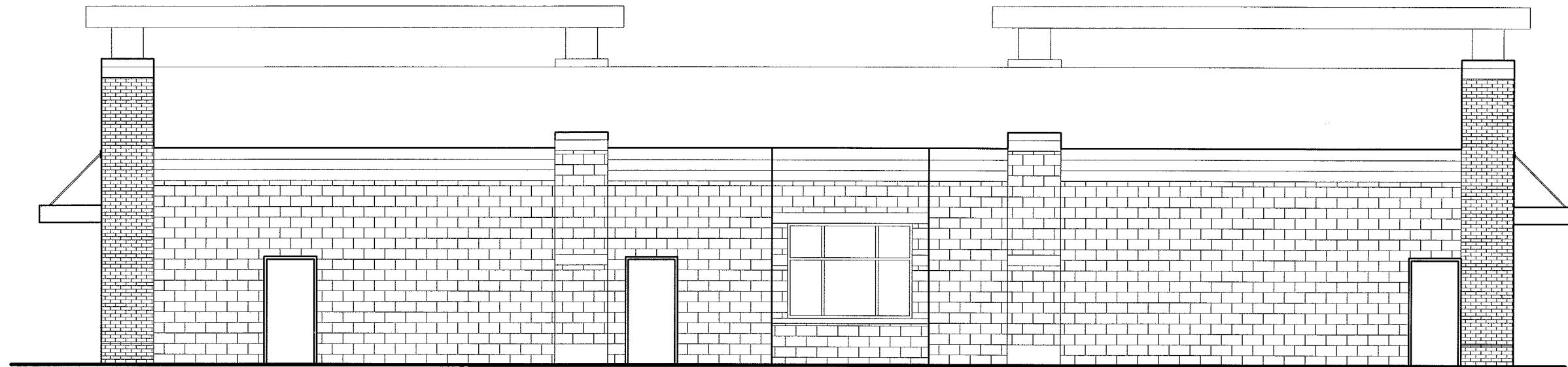
WEST & EAST ELEVATION



**E. WASHINGTON
 RETAIL**

4302 E. WASHINGTON AVE.
 MADISON, WI

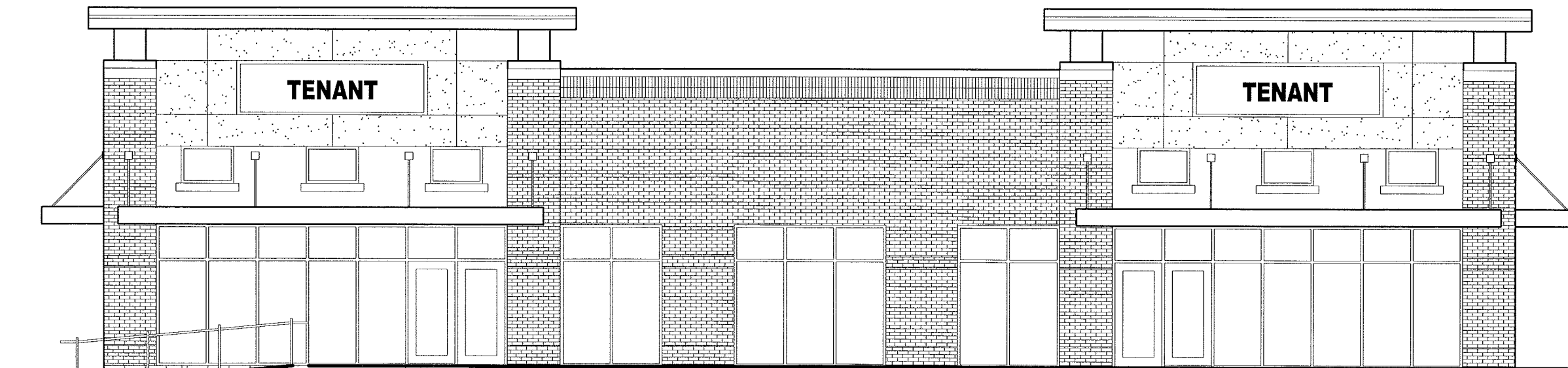
NORTH ELEVATION



TENANT

TENANT

SOUTH ELEVATION



DATE OF ISSUE: 05/07/08

**PRELIMINARY
 NOT FOR
 CONSTRUCTION**

PROJECT #: 08005

ELEVATIONS

A2.0