

SITE MAP

SITE STATISTICS

SITE ACREAGE: 4,385 sq. ft. (0.1 acres)

BUILDING AREA:
 BUILDING FOOTPRINT: 2,087 sq. ft. 47.6%
 PAVEMENT: 1,323 sq. ft. 30.2%
 PERVIOUS AREA: 975 sq. ft. 2.2%

USEABLE OPEN SPACE PROVIDED:
 REAR YARD SPACE: 459 sq. ft.
 BALCONY SPACE: 166 sq. ft.

PARKING PROVIDED: NONE

PARKING REQUIRED: NONE

BICYCLE PARKING:
 COVERED EXTERIOR STALLS: 5
 COVERED STACKED STALLS: 16
 NON-COVERED EXTERIOR STALLS: 2
 TOTAL 23

INTERIOR VERTICAL RACK STALLS: 6

TOTAL BIKE STALLS: 29

MOPED PARKING:
 EXTERIOR STALLS: 3

LEGAL DESCRIPTION:
 S.W. 1/2 of Lot 5, Block 42, Original Plat of Madison, City of Madison, Dane County, Wisconsin.

BUILDING

NUMBER OF STORIES (ABOVE GRADE): 4
 BUILDING HEIGHT: 46'
 COMM. CONSTRCTION TYPE: 5A,
 AUTOMATIC SPRINKLER SYSTEM PER NFPA 13

BUILDING AREA:

1ST:	2,087 sq. ft.
2ND:	2,136 sq. ft.
3RD:	2,136 sq. ft.
4TH:	2,136 sq. ft.
TOTAL:	8,495 sq. ft.

APARTMENT UNIT COUNT

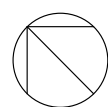
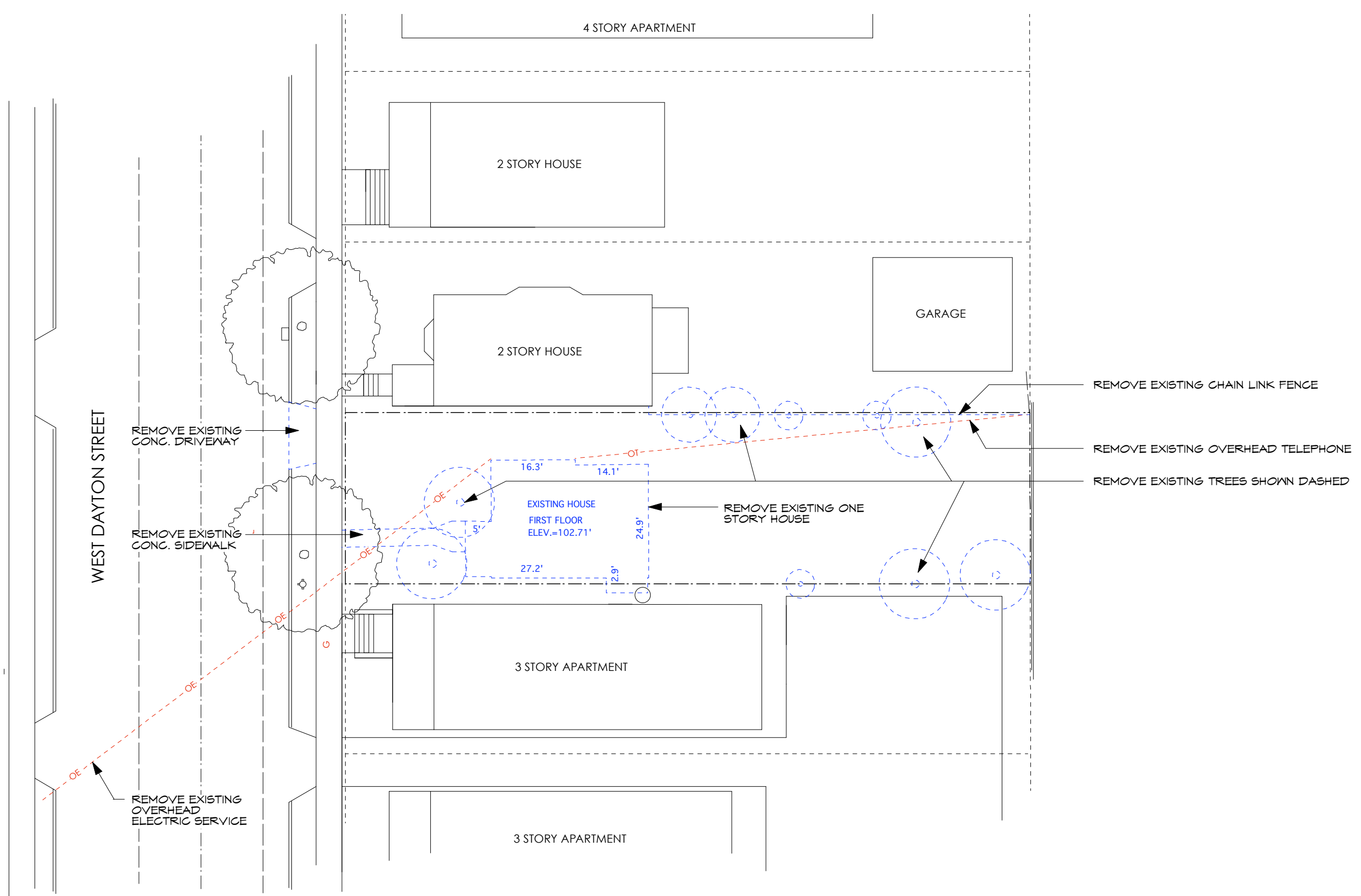
FLOOR	5BR	6BR	TOTAL
1ST	1		1
2ND		1	1
3RD		1	1
4TH		1	1
TOTAL	1	3	4

(23 TOTAL BEDROOMS)

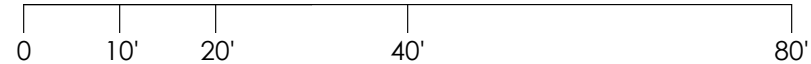
UDC - FINAL

SHEET INDEX

- 1 COVER SHEET / LOCATION MAP
- 2 DEMOLITION PLAN
- 3 SITE PLAN
- 4 GRADING & UTILITY PLAN
- 5 LANDSCAPE PLAN (L-1.0)
- 6 1ST FLOOR PLAN
- 7 2ND FLOOR PLAN
- 8 3RD & 4TH FLOOR PLAN
- 9 W. DAYTON STREET ELEVATION
- 10 WEST ELEVATION
- 11 EAST ELEVATION
- 12 SOUTH ELEVATION
- 13 BUILDING MATERIALS & DETAILS
- 14 PHOTO OF EXISTING BUILDING
- 15 SITE LIGHTING



SITE DEMOLITION PLAN



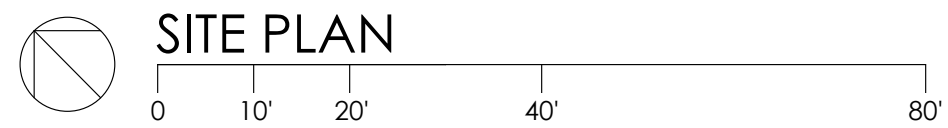
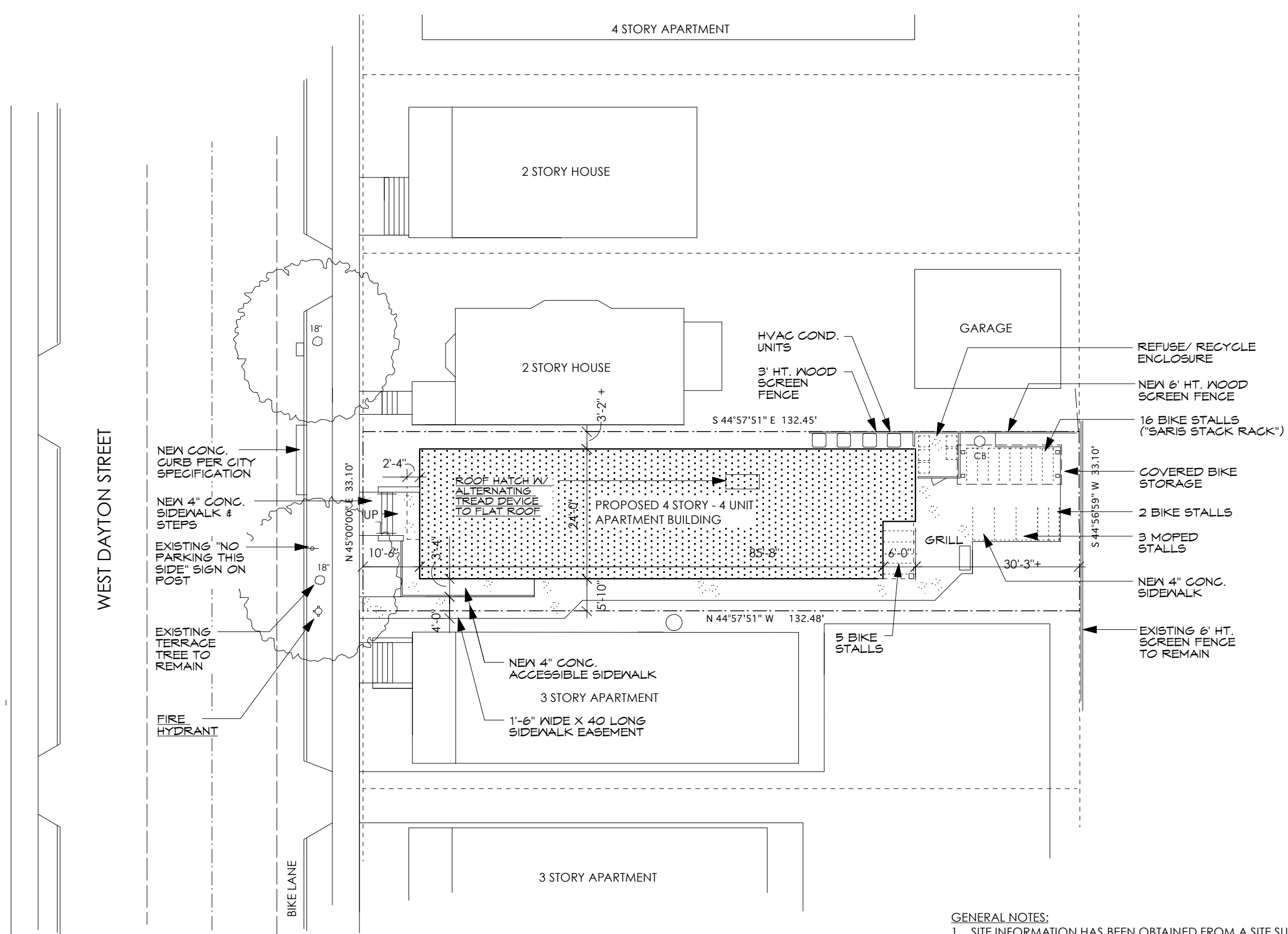
PROJECT
4 UNIT APARTMENT
 431 W. Dayton Street, Madison, WI

ARCHITECT
DAVID FERCH,
 ARCHITECTS
 2704 Gregory Street,
 Madison, WI 53711
 608.238.6900 FAX 608.233.9171

No.	Date	Revision
—	6/22/2010	—
—	—	—
—	—	—
—	—	—

DATE	Project Number	Date
01011	—	4/26/2010
—	—	—
—	—	—
—	—	—

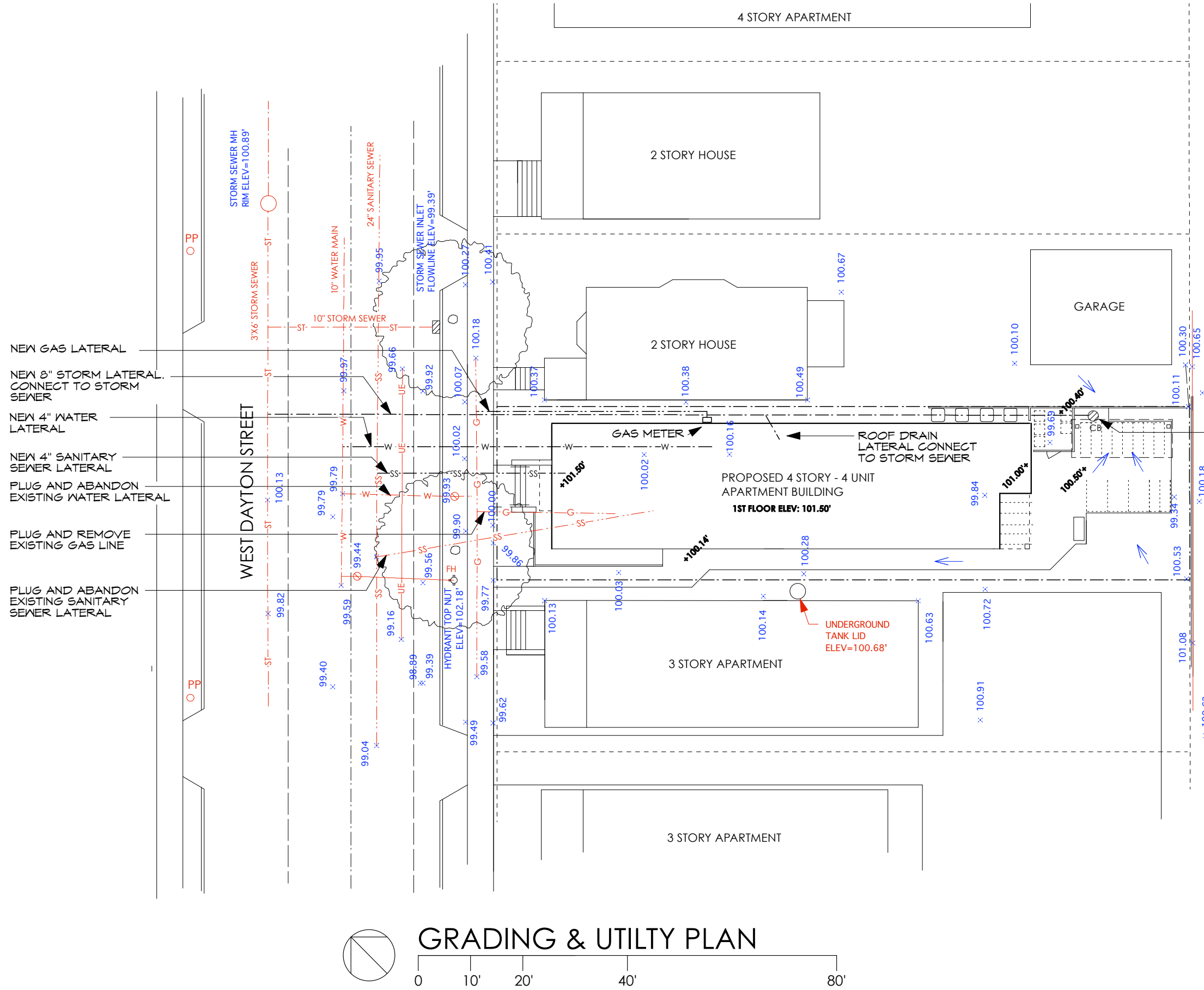
SHEET NUMBER
2



GENERAL NOTES:

1. SITE INFORMATION HAS BEEN OBTAINED FROM A SITE SURVEY PREPARED BY WILLIAMSON SURVEYING & ASSOCIATES, LLC. DATED 3/10/10.
2. THE GENERAL CONTRACTOR SHALL VERIFY THE EXACT LOCATION OF ALL UTILITIES PRIOR TO THE START OF ANY EXCAVATION WORK. REPORT ANY AND ALL DISCREPANCIES OF THE ARCHITECT. CONTACT DIGGERS HOTLINE, 800 242-8511.

PROJECT	ARCHITECT	No.	Date	Revision	DATE
4 UNIT APARTMENT	DAVID FERCH, ARCHITECTS	01011	4/26/2010		
431 W. Dayton Street, Madison, WI	2704 Gregory Street, Madison, WI 53711 608.238.6900 FAX 608.233.9171	6/22/2010			
					Project Number
					DATE
					3



- NEW GAS LATERAL
- NEW 8" STORM LATERAL. CONNECT TO STORM SEWER
- NEW 4" WATER LATERAL
- NEW 4" SANITARY SEWER LATERAL
- PLUG AND ABANDON EXISTING WATER LATERAL
- PLUG AND REMOVE EXISTING GAS LINE
- PLUG AND ABANDON EXISTING SANITARY SEWER LATERAL

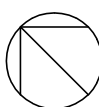
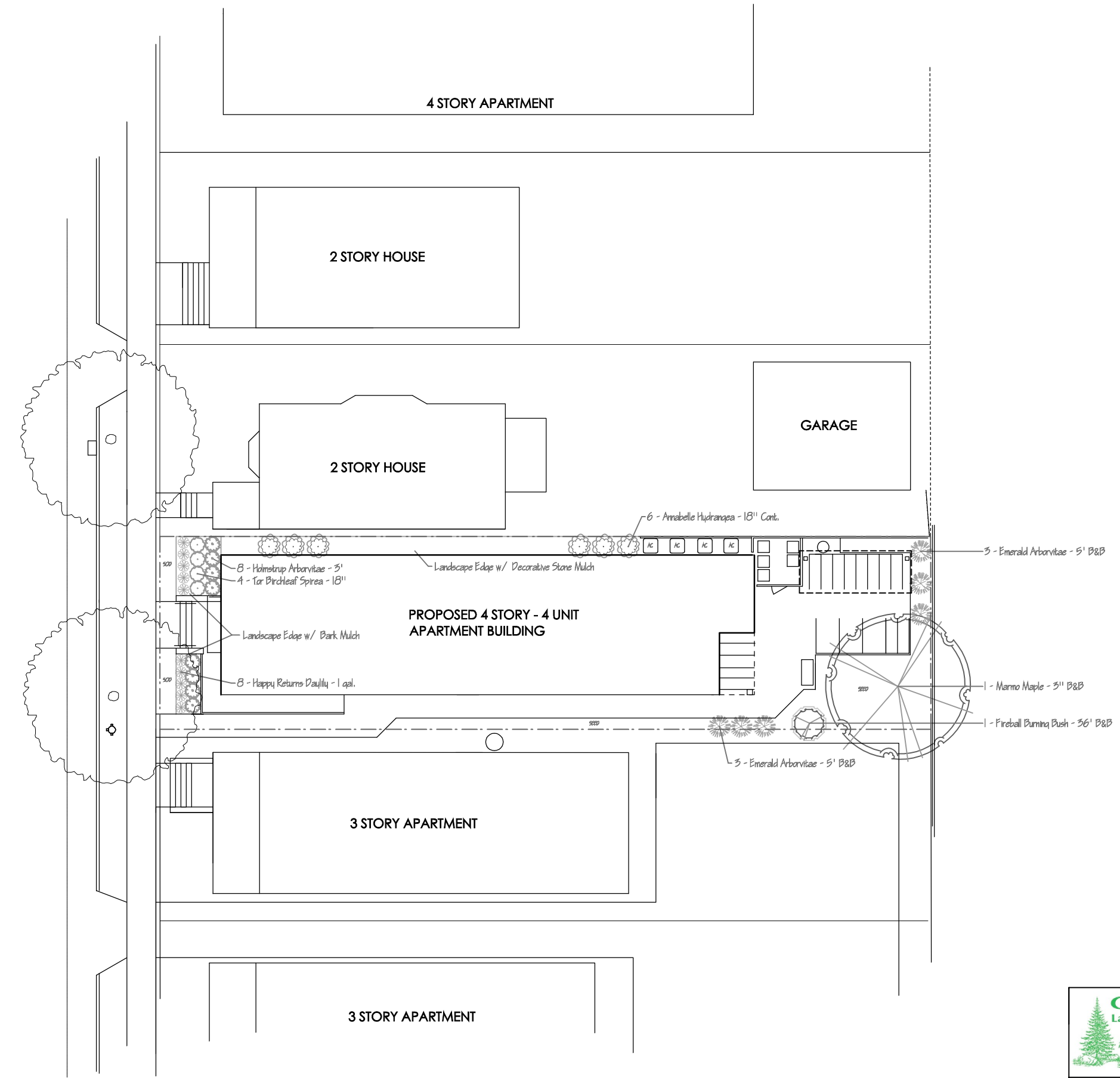
NEW STORM SEWER CATCH BASIN. RIM EL. 99.50'

SITE PLAN LEGEND:

- 100.00 EXISTING SPOT ELEVATIONS
- 100.00+ NEW SPOT ELEVATIONS
- SL STREET LIGHT POLE
- CB STORM SEWER INLET
- FE FIRE HYDRANT
- MH MAN HOLE
- CURB INLET
- SURFACE DRAINAGE
- GAS LINE
- OVERHEAD TELEPHONE
- WATER LINE
- SANITARY SEWER
- OVERHEAD ELEC
- STORM SEWER
- PP POWER POLE

GRADING & UTILITY PLAN
 0 10' 20' 40' 80'

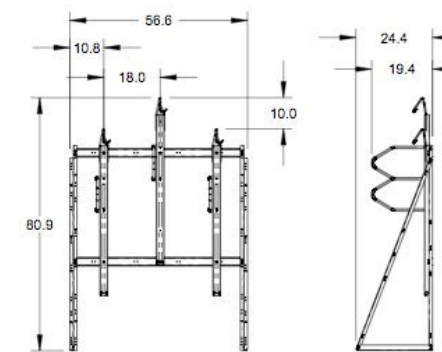
WEST DAYTON STREET



LANDSCAPE PLAN



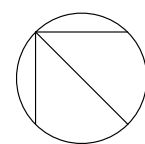
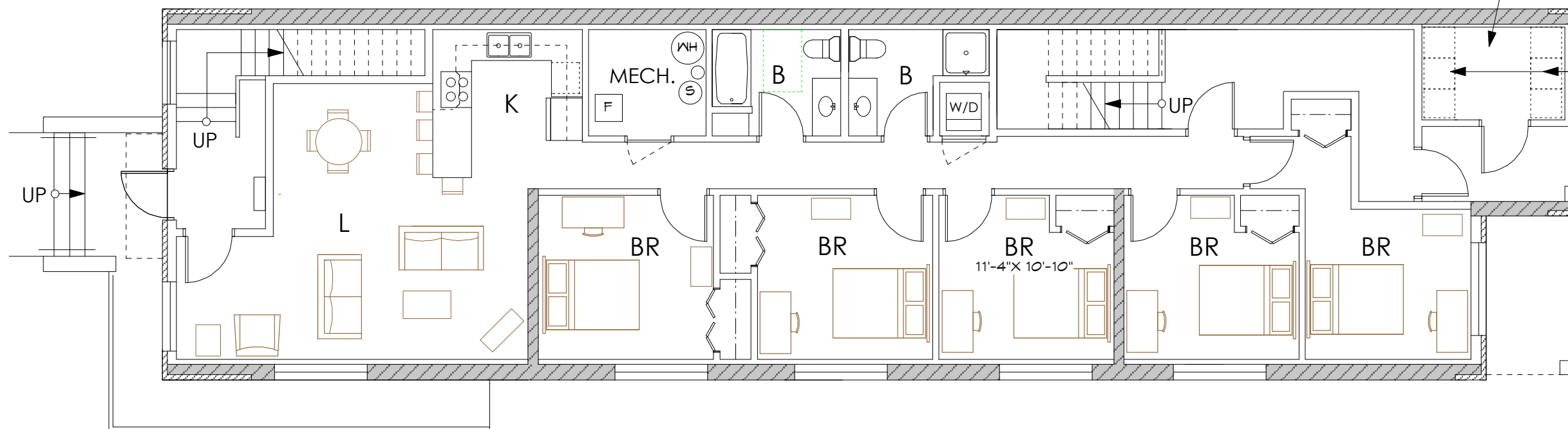
<p>GLACIER Landscape, INC.</p>	<p>7395 HWY. PD VERONA, WI PH. 608-845-5111 FAX 608-845-3335 glacierlandscapeinc.com</p>
	<p>A LANDSCAPE PLAN FOR: FOUR UNIT APARTMENT 431 West Dayton Street Madison, WI</p>
<p>Drawn By: edb</p>	<p>DATE: 06.22.10</p>



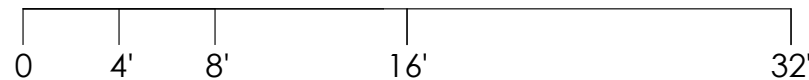
8113
3-BIKE LOCKING RACK

BIKE STORAGE ROOM

6 VERTICAL WALL MOUNTED BIKE STALLS ("SARIS 8113")



1ST FLOOR PLAN

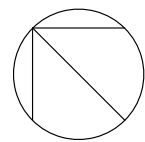
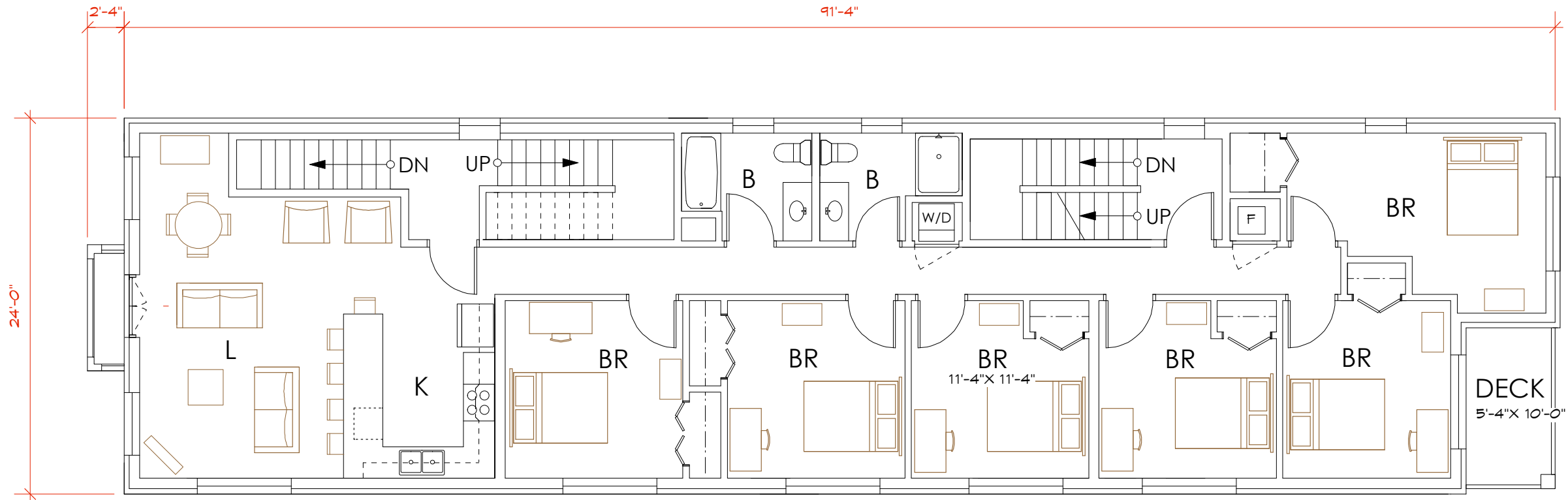


PROJECT
4 UNIT APARTMENT
431 W. Dayton Street, Madison, WI

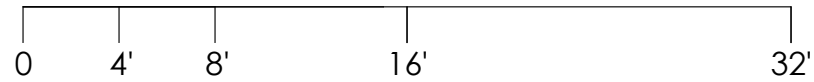
ARCHITECT
DAVID FERCH,
ARCHITECTS
2704 Gregory Street,
Madison, WI 53711
608.238.6900 FAX 608.233.9171

No.	Date	Revision
1	6/22/2010	

DATE
01011 4/26/2010
Project Number Date
SHEET NUMBER
6



2ND FLOOR PLAN



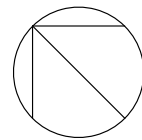
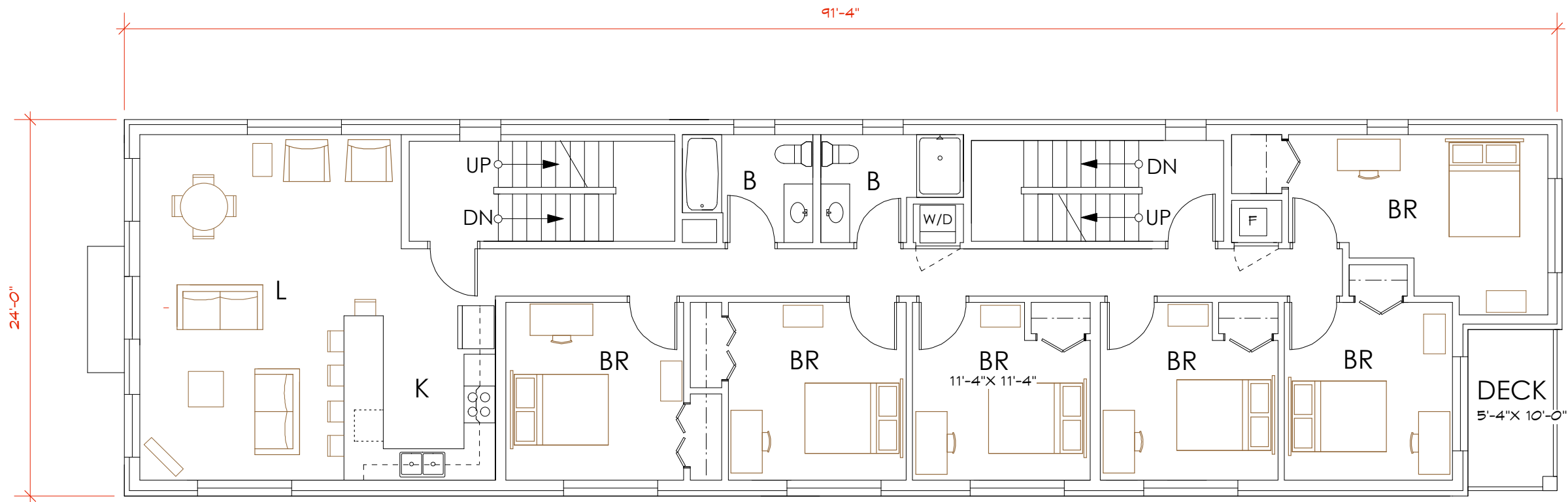
PROJECT
4 UNIT APARTMENT
 431 W. Dayton Street, Madison, WI

ARCHITECT
DAVID FERCH,
 ARCHITECTS
 2704 Gregory Street,
 Madison, WI 53711
 608.238.6900 FAX 608.233.9171

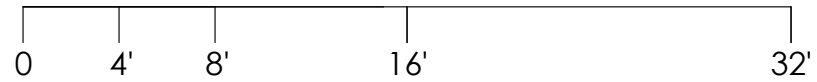
No.	Date	Revision
1	6/22/2010	

DATE	Project Number	Date
01011		4/26/2010

SHEET NUMBER
7



(4TH FLOOR SIMILAR)
3RD FLOOR PLAN



PROJECT
4 UNIT APARTMENT
431 W. Dayton Street, Madison, WI

ARCHITECT
DAVID FERCH,
ARCHITECTS
2704 Gregory Street,
Madison, WI 53711
608.238.6900 FAX 608.233.9171

No.	Date	Revision
1	6/22/2010	

DATE
01011 4/26/2010
Project Number Date
SHEET NUMBER
8



W. DAYTON ST. ELEVATION

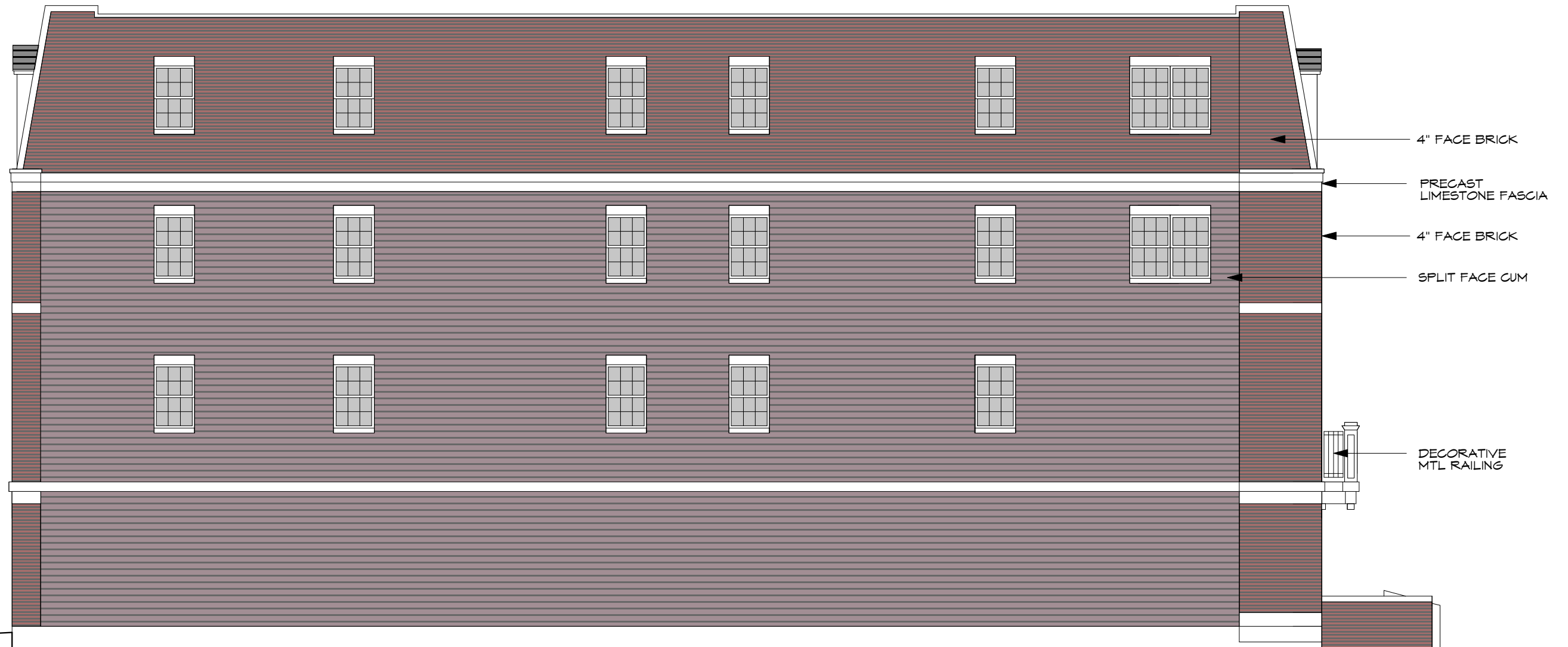
SCALE; 1/8" = 1'-0"

PROJECT		ARCHITECT		DATE	
4 UNIT APARTMENT		DAVID FERCH, ARCHITECTS		01011 4/26/2010	
431 W. Dayton Street, Madison, WI		2704 Gregory Street, Madison, WI 53711 608.238.6900 FAX 608.233.9171		Project Number Date	
				SHEET NUMBER	
				9	



WEST ELEVATION

PROJECT		ARCHITECT		DATE	
4 UNIT APARTMENT		DAVID FERCH, ARCHITECTS		01011 4/26/2010	
431 W. Dayton Street, Madison, WI		2704 Gregory Street, Madison, WI 53711 608.238.6900 FAX 608.233.9171		No. Date Revision	
				6/22/2010	
				Project Number Date	
				10	



4" FACE BRICK

PRECAST LIMESTONE FASCIA

4" FACE BRICK

SPLIT FACE CUM

DECORATIVE MTL RAILING

EAST ELEVATION



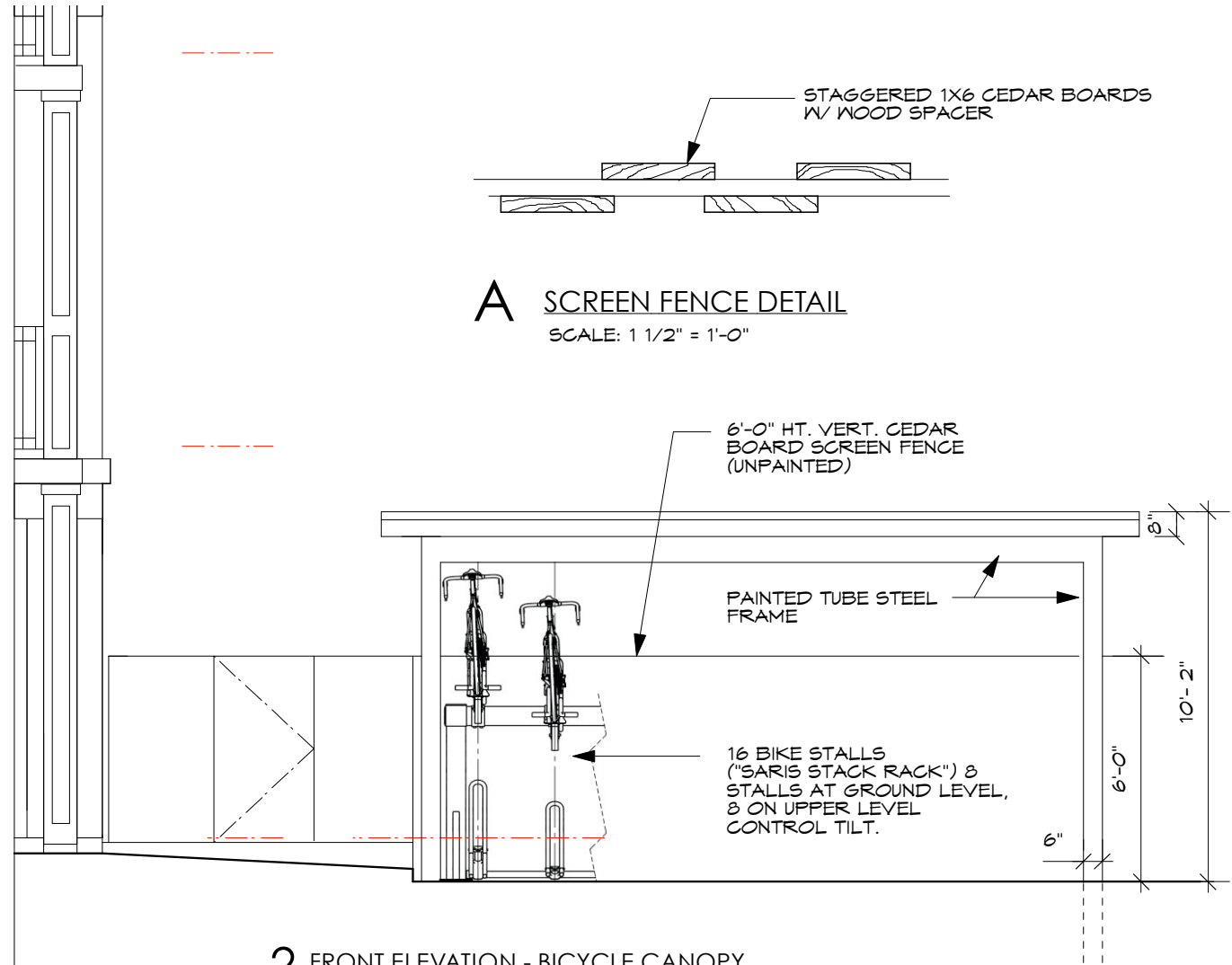
REAR ELEVATION

PROJECT
4 UNIT APARTMENT
 431 W. Dayton Street, Madison, WI

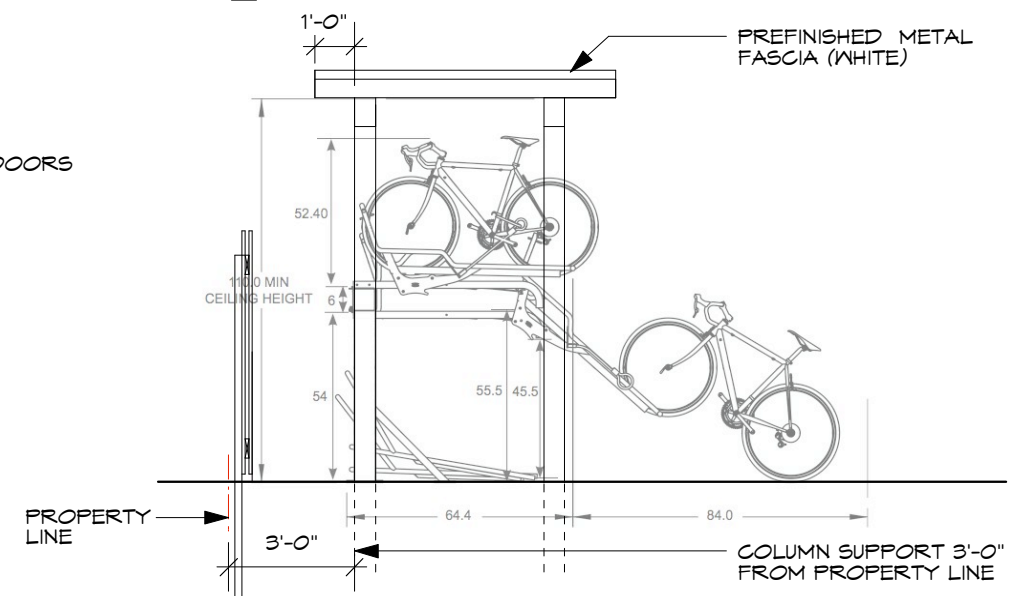
ARCHITECT
DAVID FERCH,
 ARCHITECTS
 2704 Gregory Street,
 Madison, WI 53711
 608.238.6900 FAX 608.233.9171

No.	Date	Revision
—	—	—
—	—	—
—	—	—
—	—	—

DATE	Project Number	Date
01011	—	4/26/2010
—	—	—
—	—	—
—	—	—



2 FRONT ELEVATION - BICYCLE CANOPY



3 SIDE ELEVATION - BICYCLE CANOPY

BUILDING MATERIALS & DETAILS

PROJECT	ARCHITECT	No.	Date	Revision	DATE
4 UNIT APARTMENT	DAVID FERCH, ARCHITECTS	01011	6/22/2010		4/26/2010
431 W. Dayton Street, Madison, WI	2704 Gregory Street, Madison, WI 53711 608.238.6900 FAX 608.233.9171				Project Number
					Date
					13



PROJECT
4 UNIT APARTMENT
431 W. Dayton Street, Madison, WI

ARCHITECT
**DAVID FERCH,
ARCHITECTS**
2704 Gregory Street,
Madison, WI 53711
608.238.6900 FAX 608.233.9171

No.	Date	Revision
—	6/22/2010	—
—	—	—
—	—	—
—	—	—

DATE	Project Number	Date
01011	—	4/26/2010
—	—	—
—	—	—
—	—	—

SHEET NUMBER
14