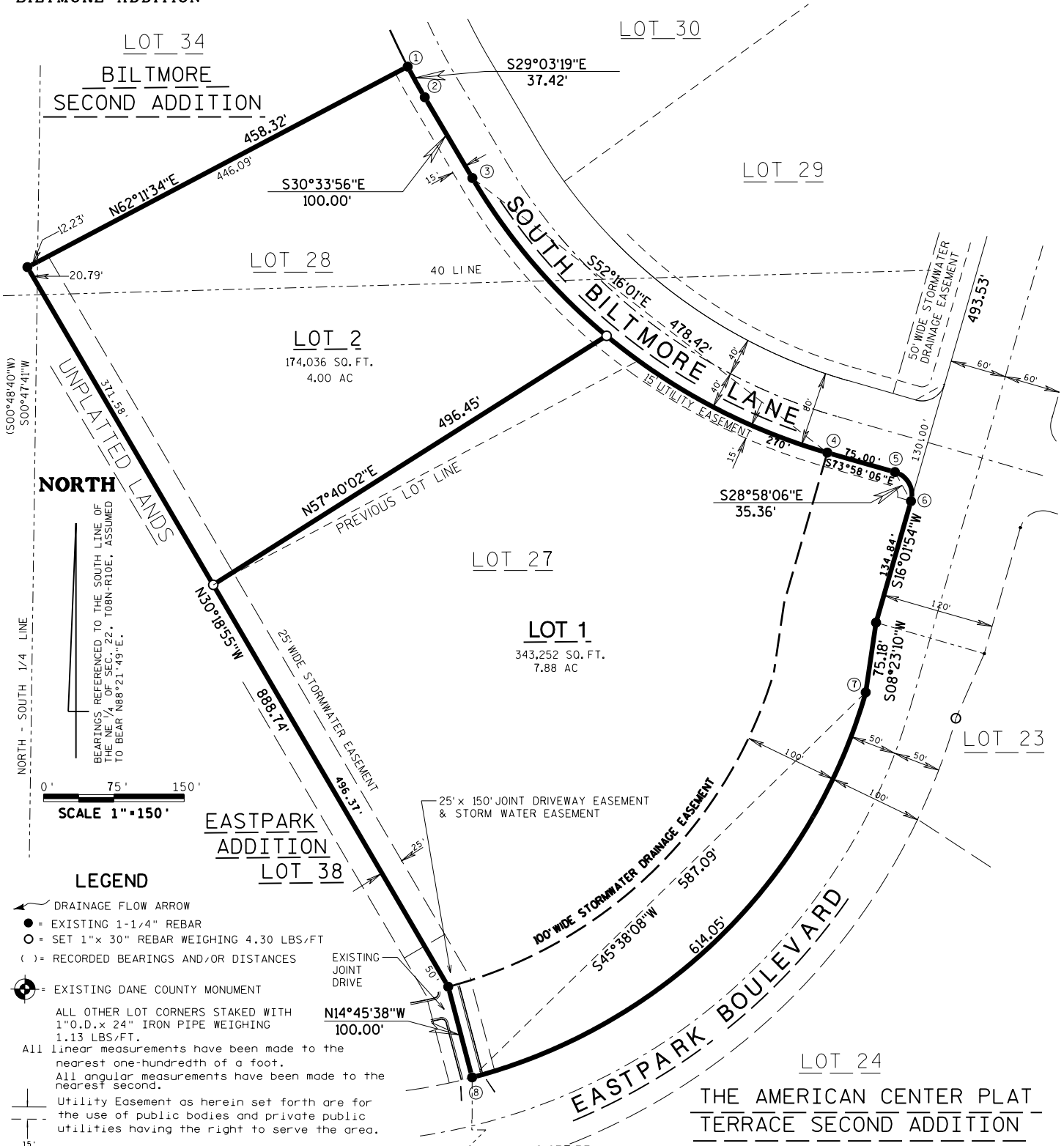


# CERTIFIED SURVEY MAP NO. \_\_\_\_\_

LOCATED IN THE SW 1/4 - NE 1/4, THE NW 1/4 - NE 1/4 AND THE NE 1/4 - NW 1/4 OF SECTION 22, T08N R10E  
CITY OF MADISON, DANE COUNTY WISCONSIN, BEING LOTS 27 AND 28 OF THE AMERICAN CENTER PLAT  
BILTMORE ADDITION

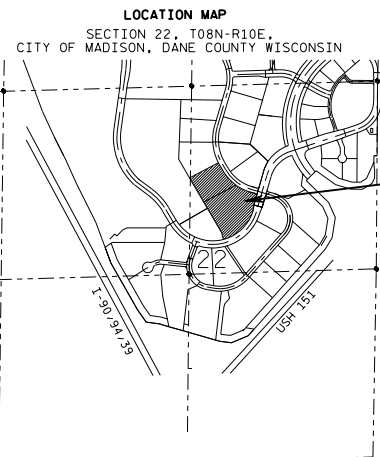


WEST 1/4 CORNER  
SECTION 22-08-10  
BRASS CAP

EAST 1/4 CORNER  
SECTION 22-08-10  
BRASS CAP

N-417291.51  
E-2185381.34  
AS PUBLISHED BY  
THE CITY OF MADISON

N-417443.17  
E-2190657.07  
AS PUBLISHED  
BY THE CITY  
OF MADISON



**AYRES ASSOCIATES**  
1802 PANKRATZ STREET  
MADISON, WI 53704  
(608) 443-1200

**OFFICE OF REGISTER OF DEEDS**

\_\_\_\_\_ County, wisconsin

Received for Record \_\_\_\_\_, 20\_\_\_\_

at \_\_\_\_\_ o'clock \_\_\_\_\_ M as document # \_\_\_\_\_

\_\_\_\_\_ in \_\_\_\_\_

\_\_\_\_\_

Register of Deeds



