



BY CHOICE HOTELS

6515 Grand Teton Plaza, Suite 120
 Madison, Wisconsin 53719
 p 608.829.4444 • f 608.829.4445
 dimensionivmadison.com

Developer: Bauer & Raether Builders Inc., Madison, WI

Architecture & Engineering: Dimension IV - Madison, LLC, Madison, WI

Site & Landscape Design: Edge Consulting Engineers, Inc., Prairie du Sac, WI

LIST OF DRAWINGS

GENERAL

G0.1 COVER SHEET

SITE / LANDSCAPE

- C1.0 EXISTING SITE PLAN
- C2.0 PROPOSED SITE PLAN
- C3.0 GRADING PLAN
- C4.0 UTILITY PLAN
- L1.0 LANDSCAPING PLAN
- L1.1 TRASH ENCLOSURE DETAIL
- SITE PHOTOMETRICS

ARCHITECTURAL

- A1.1 FIRST FLOOR PLAN
- A1.2 SECOND FLOOR PLAN
- A1.3 THIRD FLOOR PLAN
- A1.4 ELEVATOR EQUIPMENT LEVEL PLAN
- A1.5 ROOF PLAN
- A2.0 EXTERIOR BUILDING ELEVATIONS
- A2.1 EXTERIOR BUILDING ELEVATIONS

ROOM MIX

	LOBBY LEVEL	SECOND LEVEL	THIRD LEVEL	TOTAL
KING ROOMS	7	12	12	31
H.C. KING ROOMS	0	2	0	2
KING SUITES	3	4	4	11
H.C. KING SUITE	1	0	0	1
Q/O ROOMS STANDARD	13	15	17	45
H.C. Q/O ROOMS	0	0	2	2
TOTAL	24	33	35	92

BUILDING DESCRIPTION

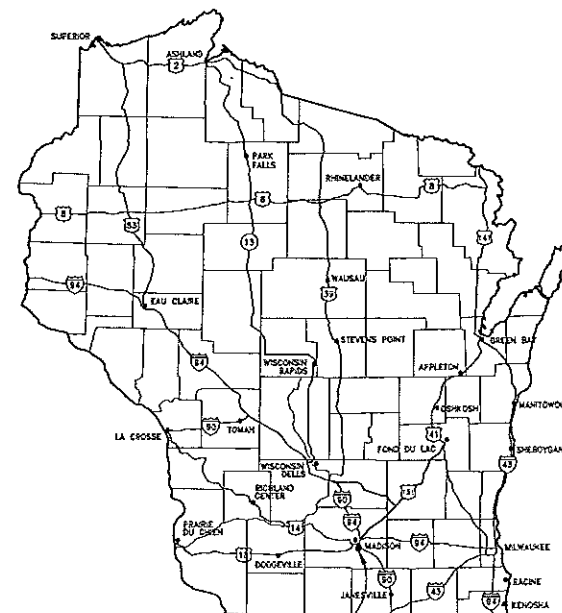
FLOOR	AREA (SQ FT)
GROUND FLOOR	17,378
2ND FLOOR	14,829
3RD FLOOR	14,829
ELEVATOR FLOOR	310
TOTAL	47,346

BUILDING DESCRIPTION

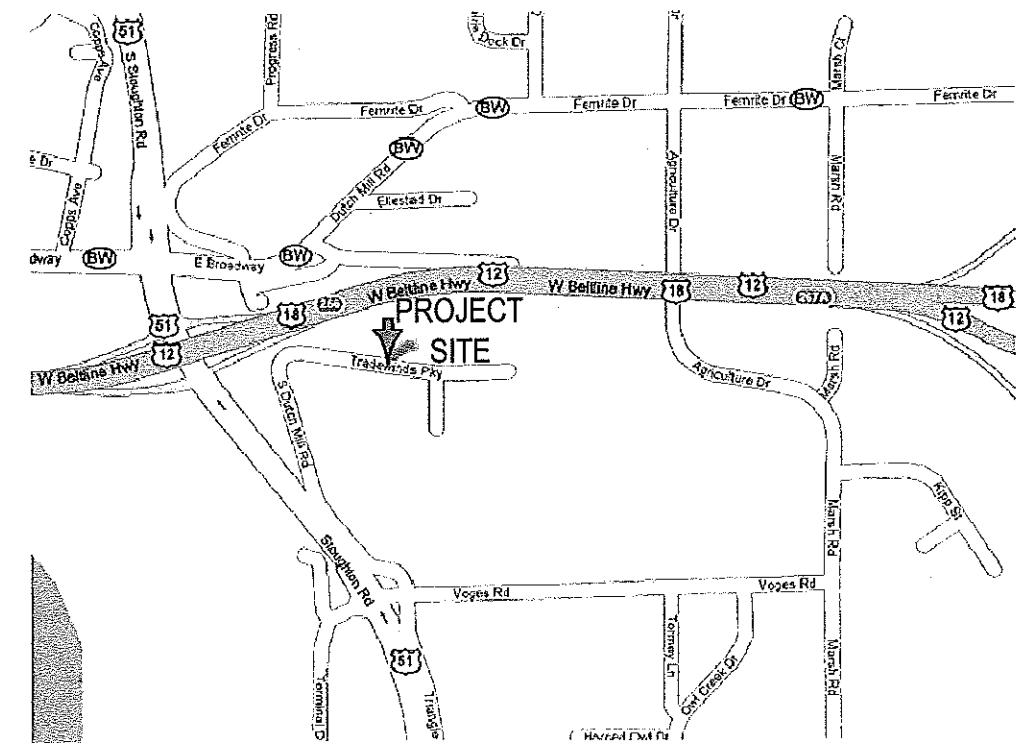
OCCUPANCY	USE	SIZE
RESIDENT	GUEST ROOMS	21,776 SQ FT
ASSEMBLY	BREAKFAST BAR	717 SQ FT
	FRONT DESK	136 SQ FT
	POOL	2,309 SQ FT
	LOBBY	231 SQ FT
	GAME ROOM	183 SQ FT
	GAME ROOM	138 SQ FT
BUSINESS	LOBBY	412 SQ FT
	OFFICE	126 SQ FT
	WORK ROOM	44 SQ FT
	LAUNDRY	258 SQ FT
	SUNDECK	59 SQ FT

BUILDING OCCUPANCY AND USE

OCCUPANCY	USE	NUMBER OF PEOPLE	SQUARE FOOT
ASSEMBLY	BREAKFAST BAR	31	717 SQ FT
	FRONT DESK	3	136 SQ FT
	POOL	15	2,309 SQ FT
	POOL DECK	707	1,605 SQ FT
	LOBBY	15	231 SQ FT
	BREAK ROOM	8	143 SQ FT
	GAME ROOM	13	183 SQ FT
	LOBBY	14	412 SQ FT
BUSINESS	OFFICE	7	126 SQ FT
	WORK ROOM	3	44 SQ FT
	LAUNDRY	3	258 SQ FT
RETAIL	SUNDECK	2	59 SQ FT
RESIDENTIAL	GUEST ROOMS	92	21,776 SQ FT
	EMPLOYEES	32	



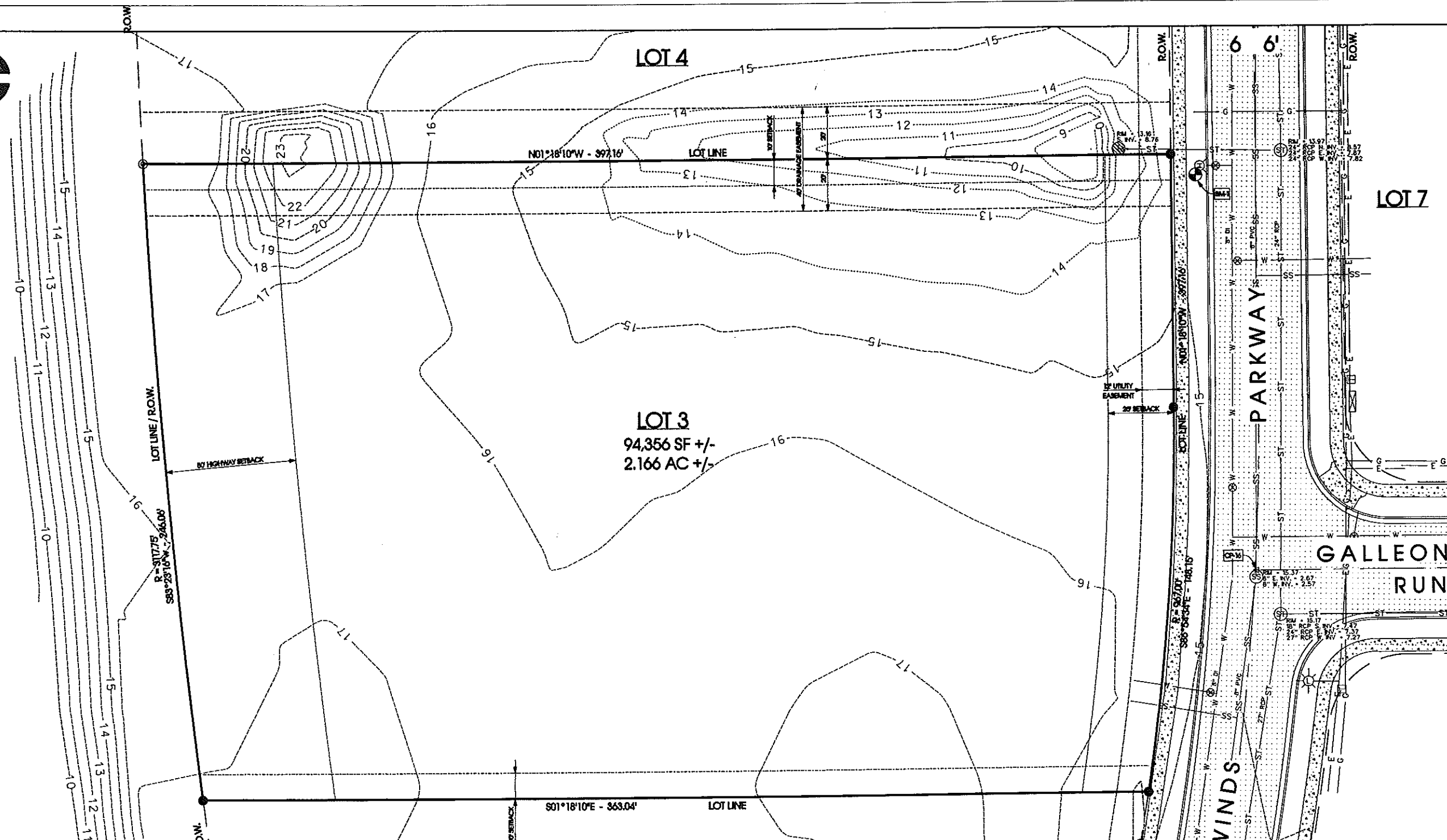
STATE MAP MADISON



SITE LOCATION MAP



U.S. HIGHWAY "12" & "18"



- NOTES**
- ELEVATIONS REFERENCED TO CITY OF MADISON VERTICAL DATUM.
 - SUBSURFACE UTILITIES AND FEATURES SHOWN ON THIS MAP HAVE BEEN APPROXIMATED BY LOCATING SURFICIAL FEATURES AND APPURTENANCES AND BY LOCATING DIGGERS HOT LINE FIELD MARKINGS.
 - LOCATION OF ELECTRICAL AND GAS FACILITIES IS BASED ON DIGGERS HOT LINE FIELD MARKINGS.
 - LOCATION OF TELECOMMUNICATION FACILITIES IS BASED ON DIGGERS HOT LINE FIELD MARKINGS.
 - BEFORE EXCAVATION, APPROPRIATE UTILITY COMPANIES SHOULD BE CONTACTED, FOR EXACT LOCATION OF UNDERGROUND UTILITIES, CONTACT DIGGERS HOT LINE AT 1.800.242.2611.
 - THE ACCURACY OF THE CONTROL POINTS AND BENCHMARKS SHOWN ON THIS MAP SHALL BE VERIFIED BEFORE BEING UTILIZED. EDGE CONSULTING ENGINEERS, INC. DOES NOT WARRANT THE ACCURACY OF THESE CONTROL POINTS AND BENCHMARKS.
 - CONTOUR INTERVAL IS ONE FOOT.
 - UTILITY LOCATIONS BASED UPON DIGGERS HOTLINE MARKINGS FOR TICKET #2008020490 (01/14/2008)
- UTILITIES NOTIFIED INCLUDE:
- | | | | |
|----------------------------------|---------|----------------------------------|---------|
| - WI DEPT OF ADMIN- DIV OF ENTER | (WET01) | - ALLIANT - COPY - WPL01 | (WPL01) |
| - WISCONSIN DOT CENTRAL OFFICE | (DOT20) | - MADISON METRO BEVERAGE DIST M | (MMS01) |
| - BPC, BPC03 | (BPC03) | - MADISON GAS & ELECTRIC CO. MGE | (MGE01) |
| - CITY OF MONONA CMA01 | (CMA01) | - CHARTER COMMUNICATIONS CHC01 | (CHC01) |
| - CITY OF MADISON ENGINEERING | (MAD01) | - DOT SOUTHWEST REGION-MADISON | (DOT1) |
| - VILLAGE OF MCARLAND MFW01 | (MFW01) | - MCLEOD USA OF WISCONSIN MCL01 | (MCL01) |
| - ALLIANT ENERGY CORP. WPL07 | (WPL07) | - VERIZON NORTH INC. VER03 | (VER03) |

LEGEND:

W	EX. WATERMAIN	+	SIGNAGE
SS	EX. SANITARY SEWER	⊗	TRANSFORMER
ST	EX. STORM SEWER	⊞	PEDESTAL (ELEC./CABLE/TEL)
G	EX. GAS	⊠	METER (PARKING)
E	EX. UNDERGROUND ELECTRIC	⊞	CURB INLET (N.I.)
OHE	EX. OVERHEAD ELECTRIC	⊞	CATCH BASIN (CB)
⊞	EX. MAN HOLE	⊞	BENCHMARK
⊞	HYDRANT	⊞	CONTROL POINT
⊞	VALVE	⊞	IRON ROD - FOUND
⊞	UTILITY POLE	⊞	IRON PIPE - FOUND
⊞	LIGHT POLE	⊞	EXISTING CONTOUR

CONTROL POINTS

CONTROL POINT	NORTHING	EASTING	ELEVATION	DESCRIPTION
CP-1	36188.15	2187277.41	14.90	IRON ROD SET IN GROUND
CP-16	36187.28	2187363.19	15.29	PK SET IN ASPHALT

BENCHMARKS

BENCH MARK	ELEVATION	DESCRIPTION
BM-1	16.14	TAG BOLT OF HYDRANT - 144' E. OF TRADEWINDS PKWY. & GALLEON RUN
BM-2	15.64	TAG BOLT OF HYDRANT - 332' W. OF TRADEWINDS PKWY. & GALLEON RUN



Edge
Consulting Engineers, Inc.

424 Hester Street
P.O. Box 1030
Madison, WI 53708
608.644.1449 voice
608.644.3300 fax
www.edgecon.com

EXISTING SITE PLAN
SLEEP INN & SUITES
MADISON, WISCONSIN

SHEET TITLE

ISSUE DATE:
02/20/08 - CD1

REVISIONS:

PRELIMINARY
NOT FOR CONSTRUCTION

DRAWN BY:
AMF

CHECKED BY:
AJO

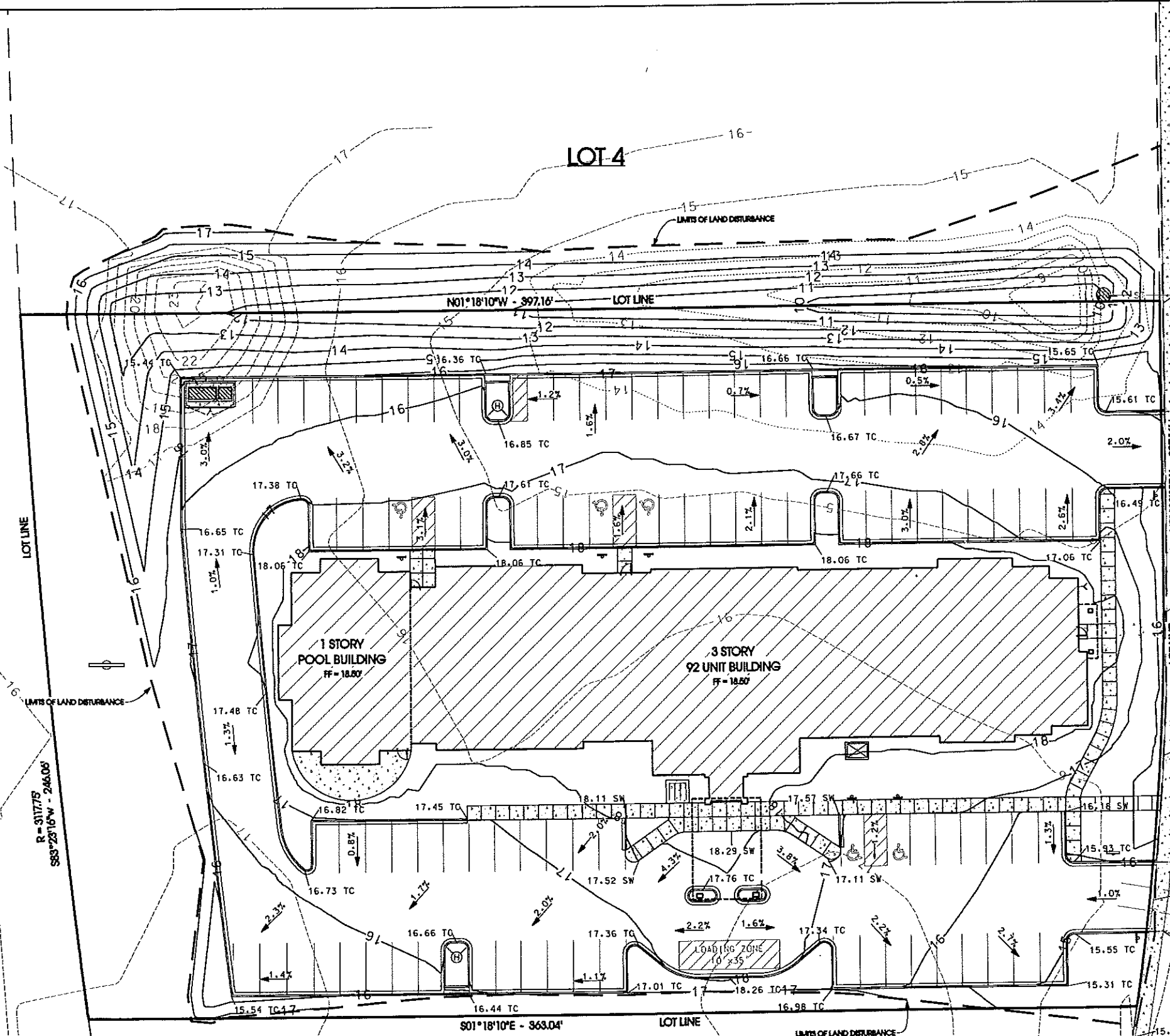
PLOT DATE:
3/4/08

PROJECT NUMBER:
R045

FILE NAME:
C1.0.dgn

SHEET NUMBER:
C1.0

© EDGE CONSULTING ENGINEERS, INC.



GRADING NOTES

1. CONTOUR INTERVAL IS 1 FOOT.
2. THE FOLLOWING EARTHWORK QUANTITIES ARE APPROXIMATE ONLY. THESE CALCULATIONS ARE BASED UPON THE CUT/FILL RELATIONSHIP FROM THE TOP OF EXISTING GRADE (TOPSOIL), TO THE TOP OF THE FINISHED GRADE SURFACE. THE CALCULATIONS DO NOT ACCOUNT FOR LOSS OR GAIN DUE TO TOPSOIL, STONE BASE, PAVEMENT OR SLAB THICKNESS AND/OR SHRINKAGE/SWELL DUE TO COMPACTION. ALL EARTHWORK CALCULATIONS SHALL BE VERIFIED BY THE CONTRACTOR. PLEASE CONTACT THE ENGINEER TO REQUEST CAD FILES OF EXISTING AND PROPOSED CONTOURS DATA FOR IMPORT INTO EARTHWORK COMPUTATION PROGRAMS.

TOTAL CUT: XXXX CY
 TOTAL FILL: XXXX CY
 NET: XXXXX CY

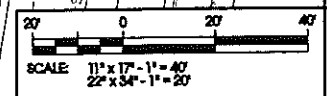
LEGEND:

- 100 --- EXISTING CONTOUR
- 100 — PROPOSED CONTOUR
- FLOW DIRECTION
- 815.17 SPOT ELEVATION

Edge
 Consulting Engineers, Inc.
 424 Water Street
 Folsom, WI 53578
 408.441.4400 voice
 262.344.4300 fax
 www.edgeincwi.com

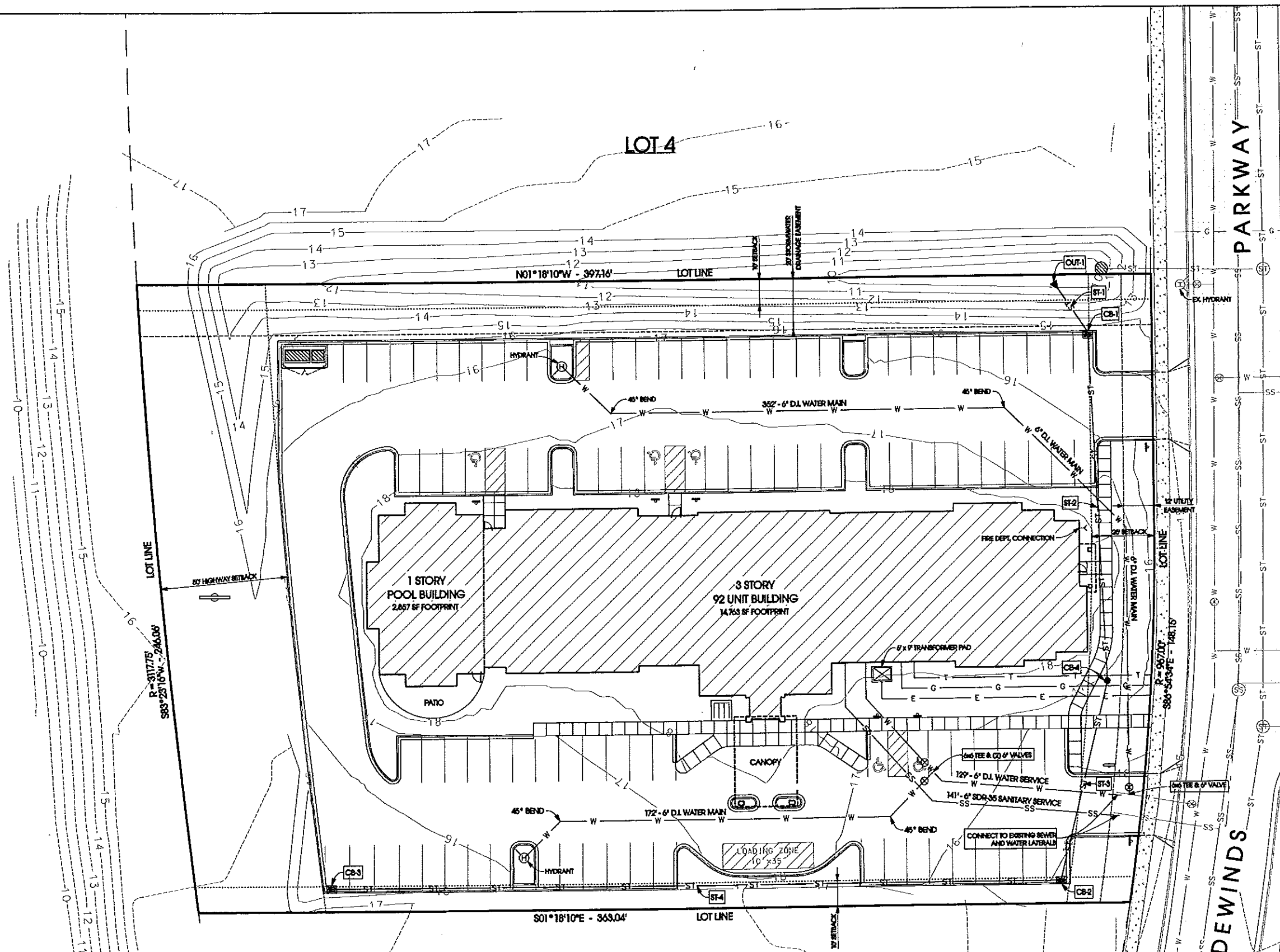
**GRADING PLAN
 - SCHEME 2 -
 SLEEP INN & SUITES
 MADISON, WISCONSIN**

ISSUE DATE:	02/20/08 - CD
REVISIONS:	
PRELIMINARY	
NOT FOR CONSTRUCTION	
DRAWN BY:	AMF
CHECKED BY:	AJO
PLOT DATE:	3/4/08
PROJECT NUMBER:	2045
FILE NAME:	C3.0.dgn
SHEET NUMBER:	C3.0





**UTILITY PLAN
 - SCHEME 2 -
 SLEEP INN & SUITES
 MADISON, WISCONSIN**



STRUCTURE TABLE

Structure			Discharge										
ID	Description	Coating	Grate	Elevation Rim/BOC	Invert	Depth	ID	Size/Material	No. of Pipes	Upstream Invert	Length (feet)	Slope (%)	Downstream Invert
CB-1	2x3 Inlet	R-3067	L	15.95	9.62	6.33	ST-1	12" SDR-26 PVC	1	9.62	23.61	0.51	9.60
CB-4	Catch Basin 24-inch	N/A	In Bed	18.81	10.13	8.68	ST-2	12" SDR-26 PVC	1	10.13	133.13	0.38	9.62
CB-2	2x3 Inlet	R-3067	L	15.37	10.60	4.76	ST-3	12" SDR-26 PVC	1	10.44	77.92	0.61	9.98
CB-3	2x3 Inlet	R-3067	L	15.50	11.73	3.83	ST-4	10" SDR-26 PVC	1	11.73	280.13	0.40	10.63

ISSUE DATE:
02/20/08 - CD4

REVISIONS:

PRELIMINARY
NOT FOR CONSTRUCTION

DRAWN BY:
AMF

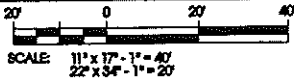
CHECKED BY:
AJO

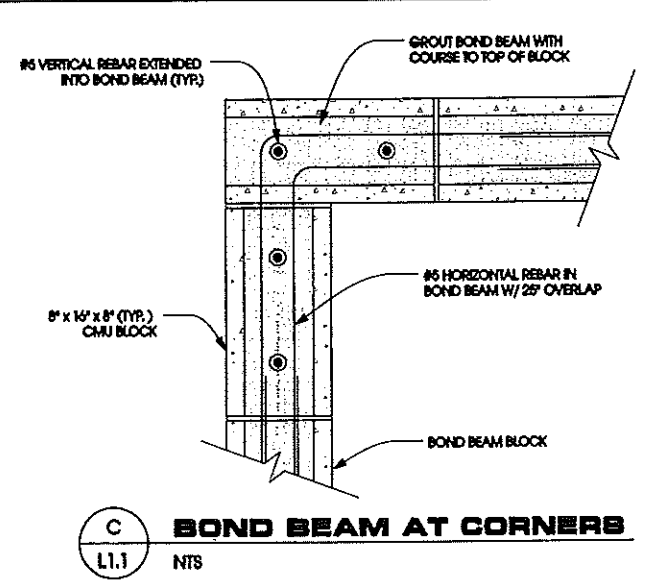
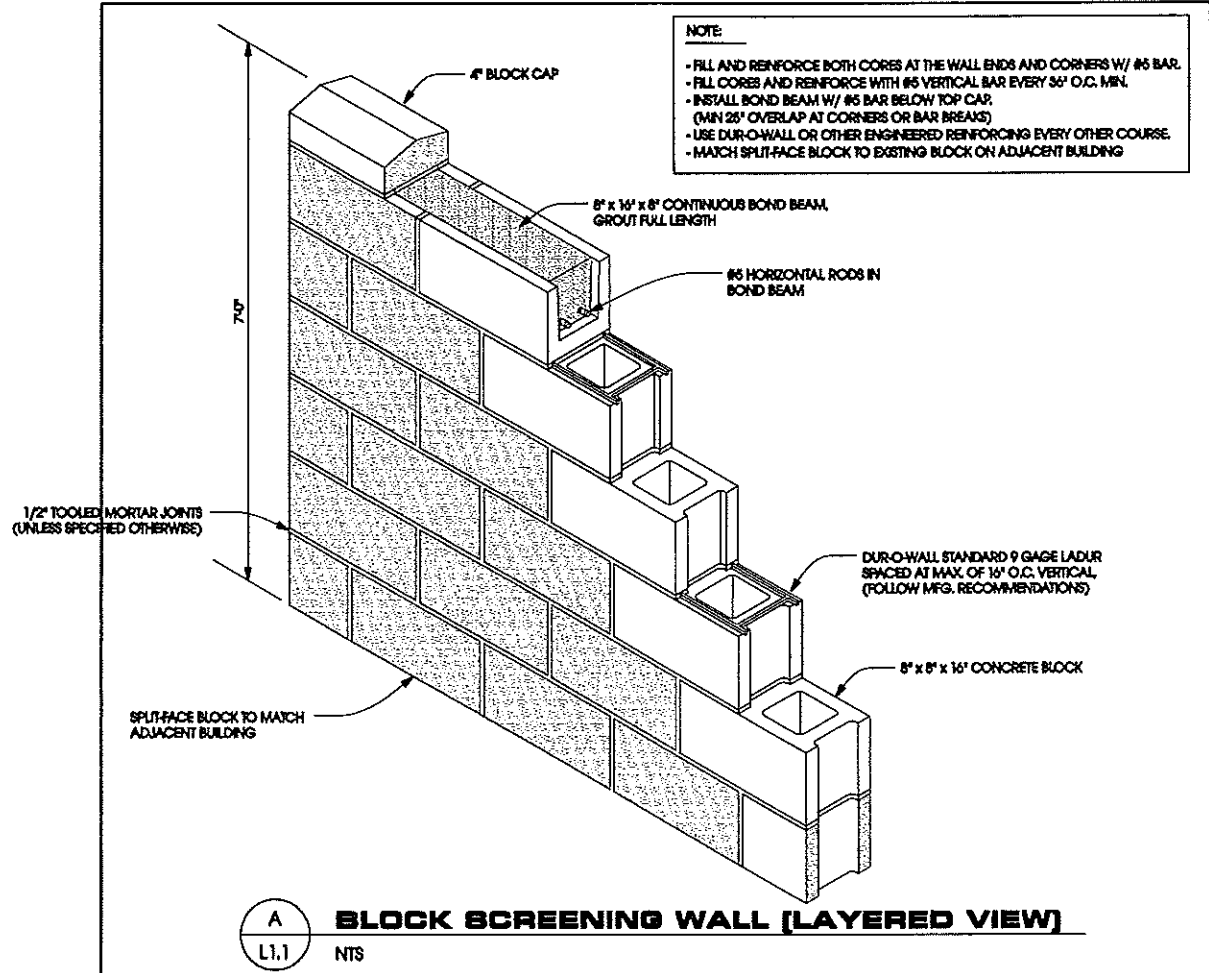
PLOT DATE:
3/4/08

PROJECT NUMBER:
8246

FILE NAME:
C4.0.dgn

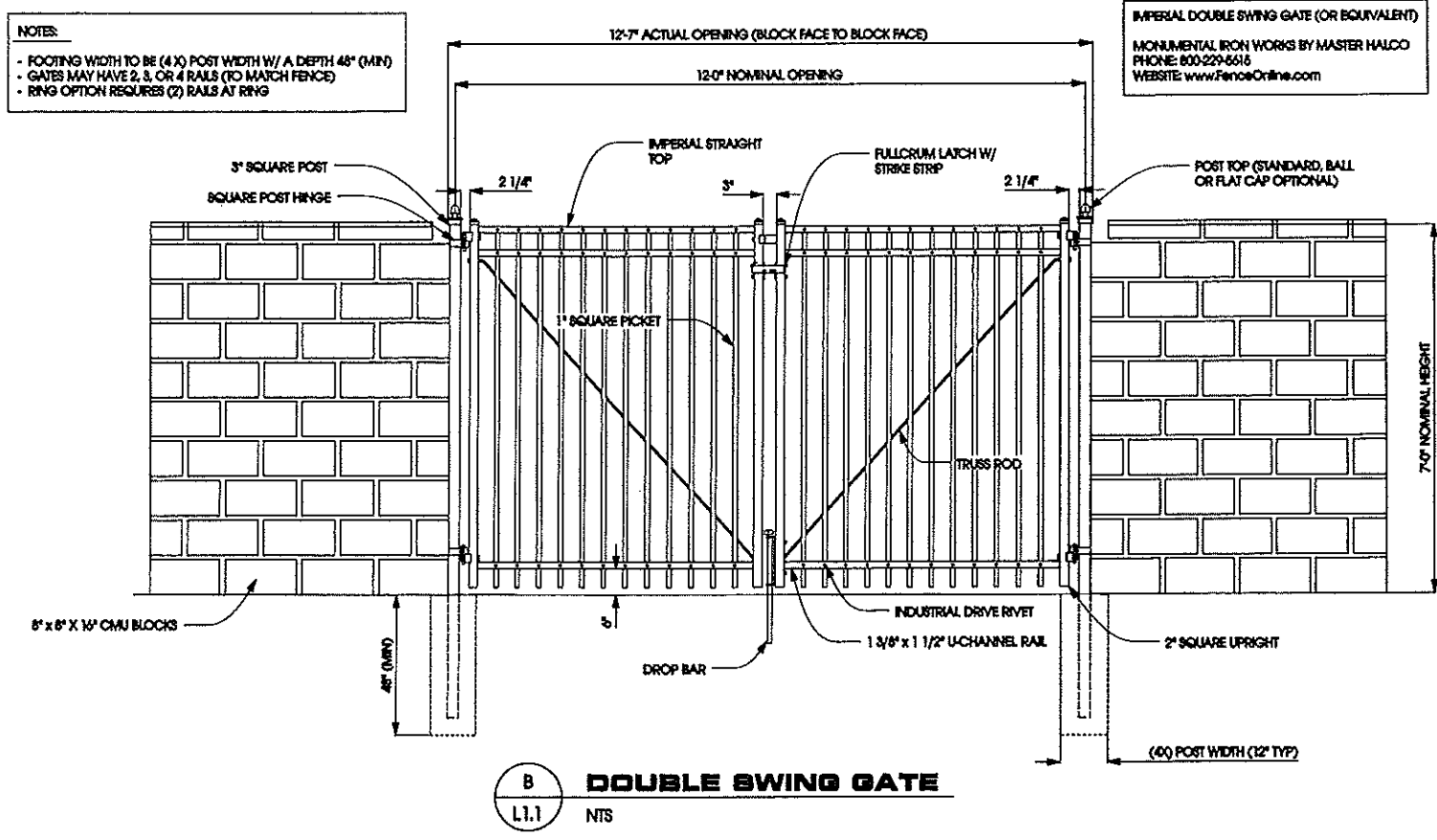
SHEET NUMBER:
C4.0



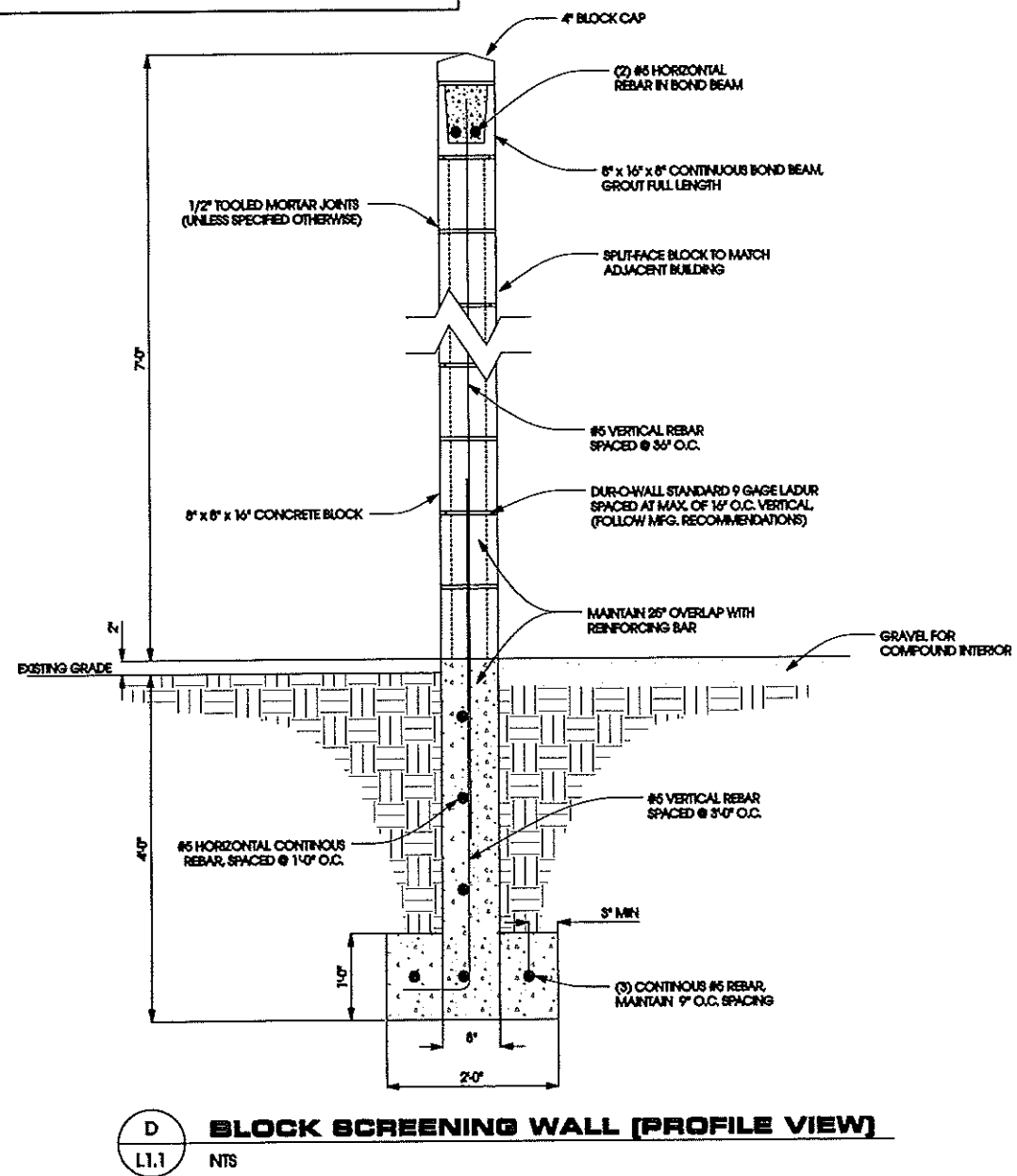


CONCRETE NOTES:

- ALL CONCRETE CONSTRUCTION SHALL BE IN ACCORDANCE W/ LOCAL BUILDING CODE REQUIREMENTS AND MOST CURRENT VERSION OF ACI STANDARDS
- ALL CONCRETE UNLESS SPECIFICALLY NOTED SHALL BE NORMAL WEIGHT (145 PCF) AND SHALL ACHIEVE A 28-DAY COMPRESSIVE STRENGTH (F_c) OF 3,000 PSI
- ALL REINFORCING SHALL BE ASTM A616 GRADE 60 STEEL AND PLACED IN ACCORDANCE W/ ACI AND CONCRETE MASONRY STANDARDS W/ 3" MIN. COVERAGE

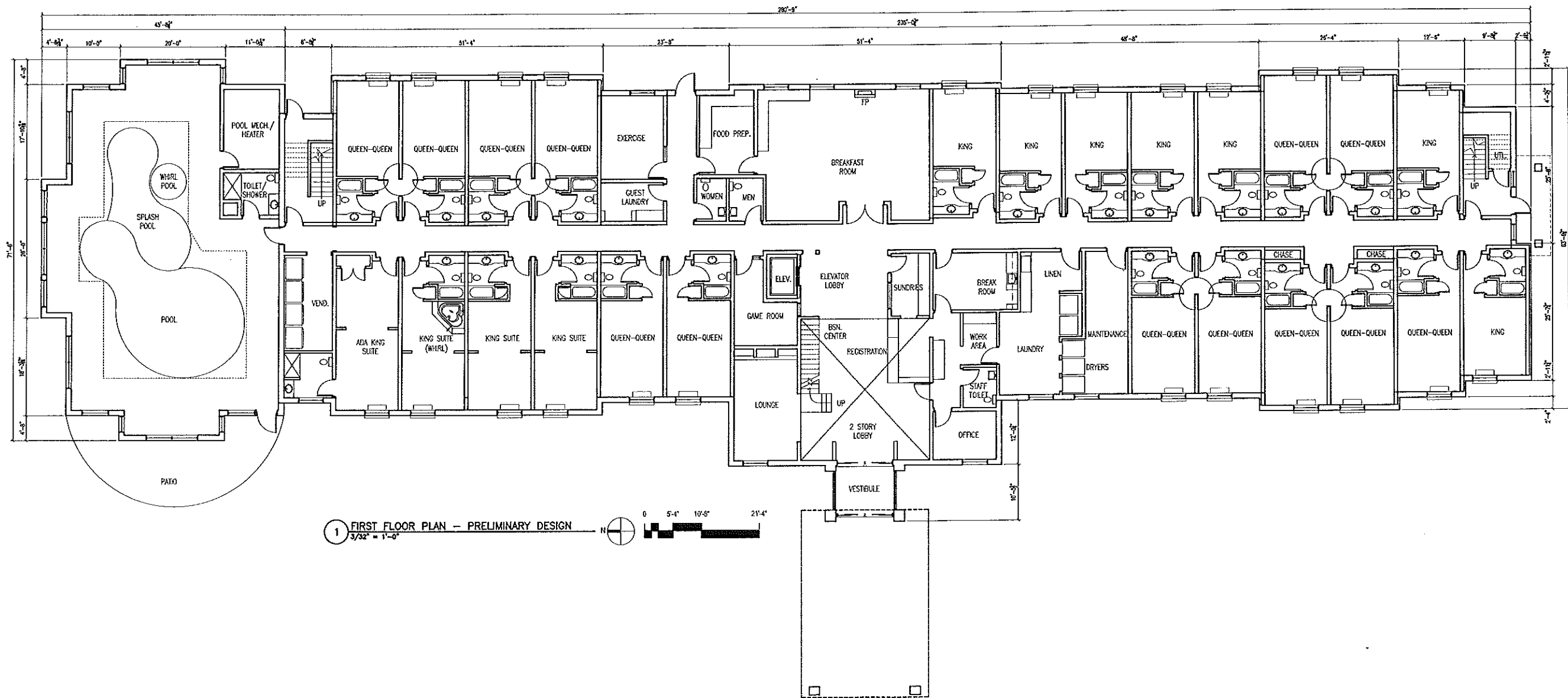


IMPERIAL DOUBLE SWING GATE (OR EQUIVALENT)
MONUMENTAL IRON WORKS BY MASTER HALCO
PHONE: 800-229-6616
WEBSITE: www.FenceOnline.com

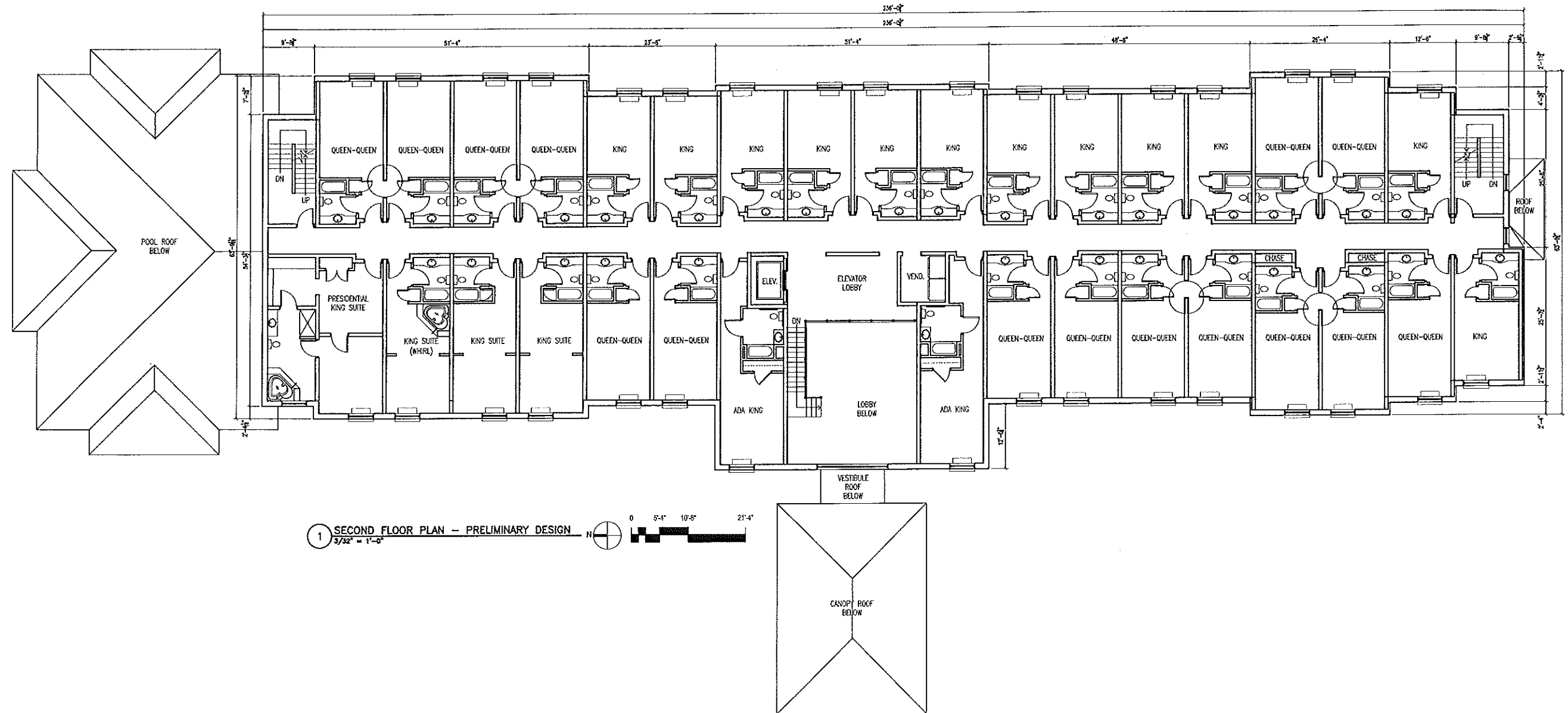


TRASH ENCLOSURE DETAIL - SCHEME 2 - SLEEP INN & SUITES MADISON, WISCONSIN

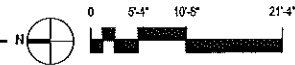
SHEET TITLE:	TRASH ENCLOSURE DETAIL - SCHEME 2 - SLEEP INN & SUITES MADISON, WISCONSIN
ISSUE DATE:	02/23/08 - CD
REVISIONS:	
DRAWN BY:	AMF
CHECKED BY:	AJO
PLOT DATE:	3/4/08
PROJECT NUMBER:	8345
FILE NAME:	L1.1.dgn
SHEET NUMBER:	L1.1



1 FIRST FLOOR PLAN - PRELIMINARY DESIGN
 3/32" = 1'-0"



1 SECOND FLOOR PLAN - PRELIMINARY DESIGN
 3/32" = 1'-0"



DIMENSION

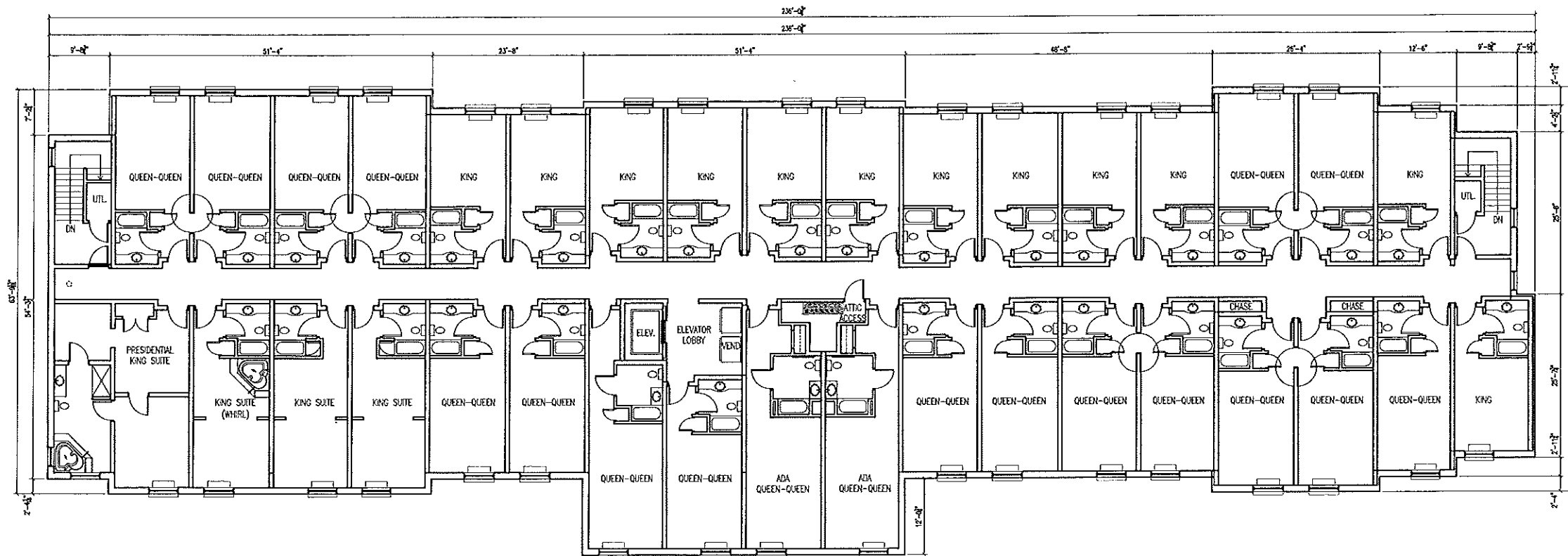
Madison Design Group
 architecture · engineering · interior design

6515 Grand Teton Plaza, Suite 120
 Madison, Wisconsin 53719
 p 608.829.4444 · f 608.829.4445
 dimensionmadison.com

Sleep Inn & Suites - Madison

Madison, WI
 A1.2 Second Floor Plan

5 March '08
 Project No. 07081



1 THIRD FLOOR PLAN -- PRELIMINARY DESIGN
 3/32" = 1'-0"

DIMENSIONIV

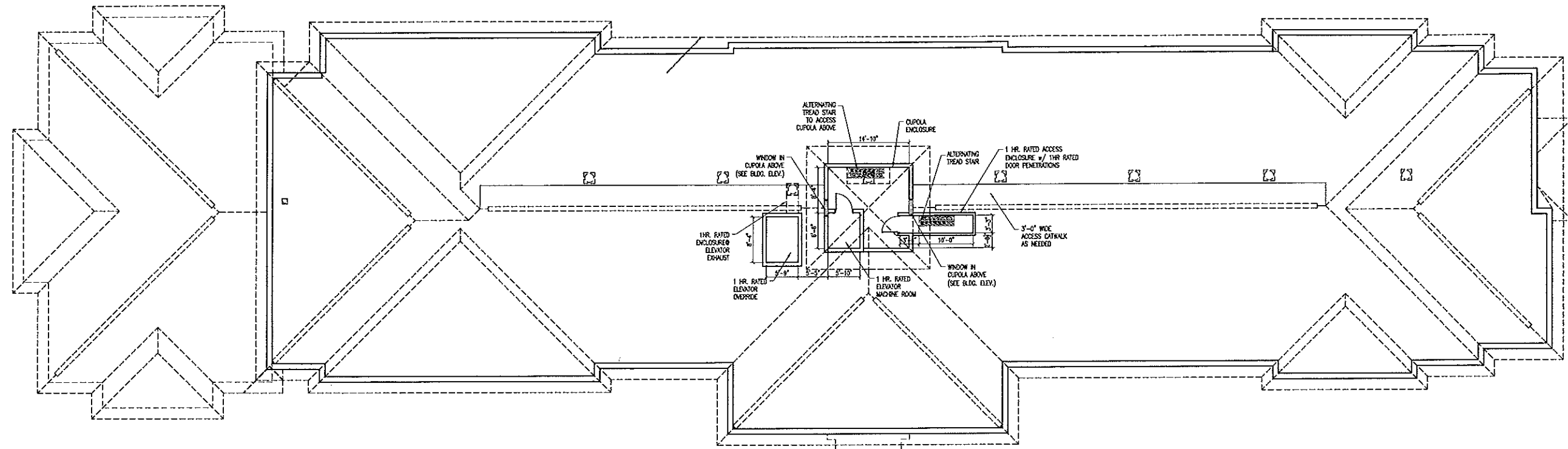
Madison Design Group
 architecture · engineering · interior design

6515 Grand Teton Plaza, Suite 120
 Madison, Wisconsin 53719
 p 608.829.4444 • f 608.829.4445
 dimensionivmadison.com

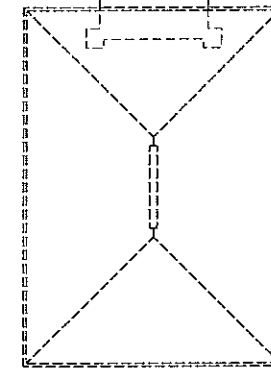
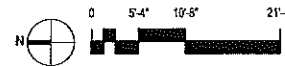
Sleep Inn & Suites - Madison

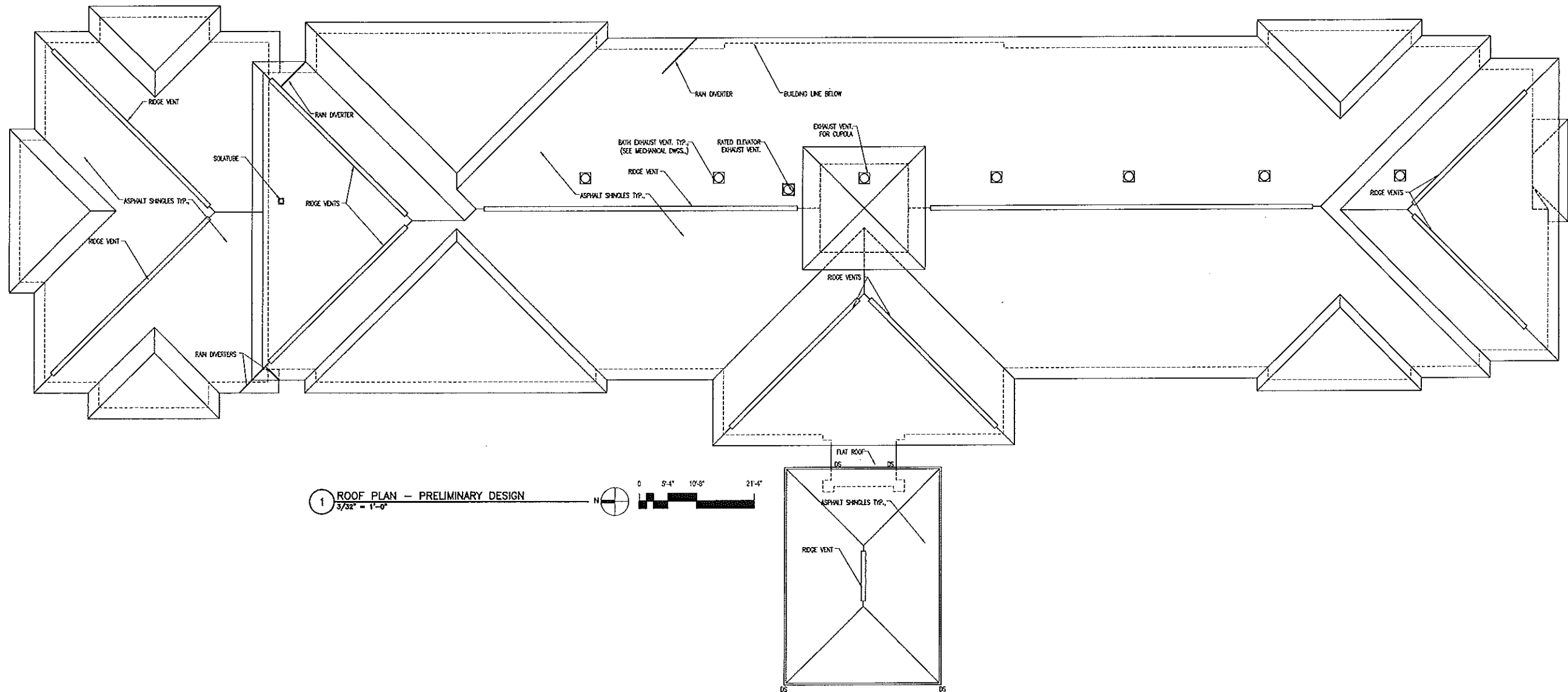
Madison, WI
 A1.3 Third Floor Plan

5 March '08
 Project No. 07081

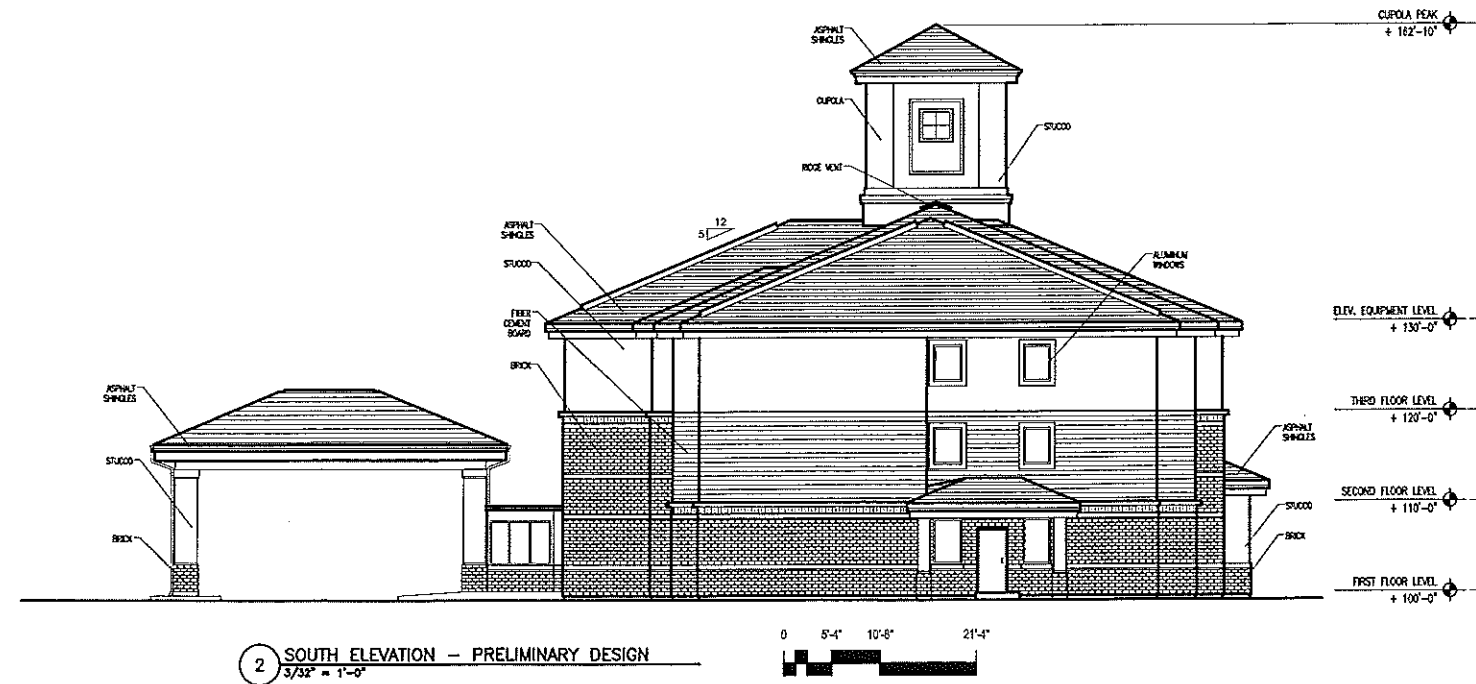
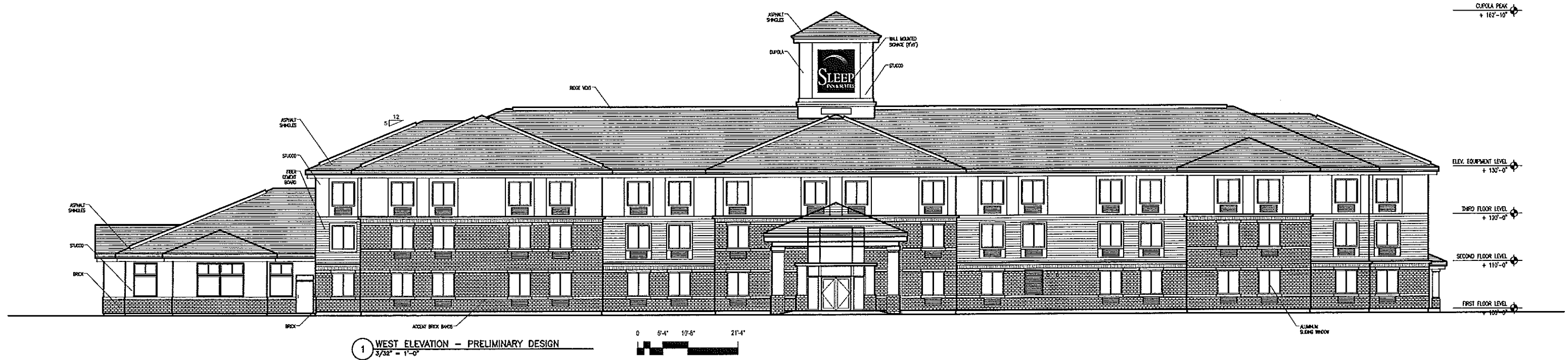


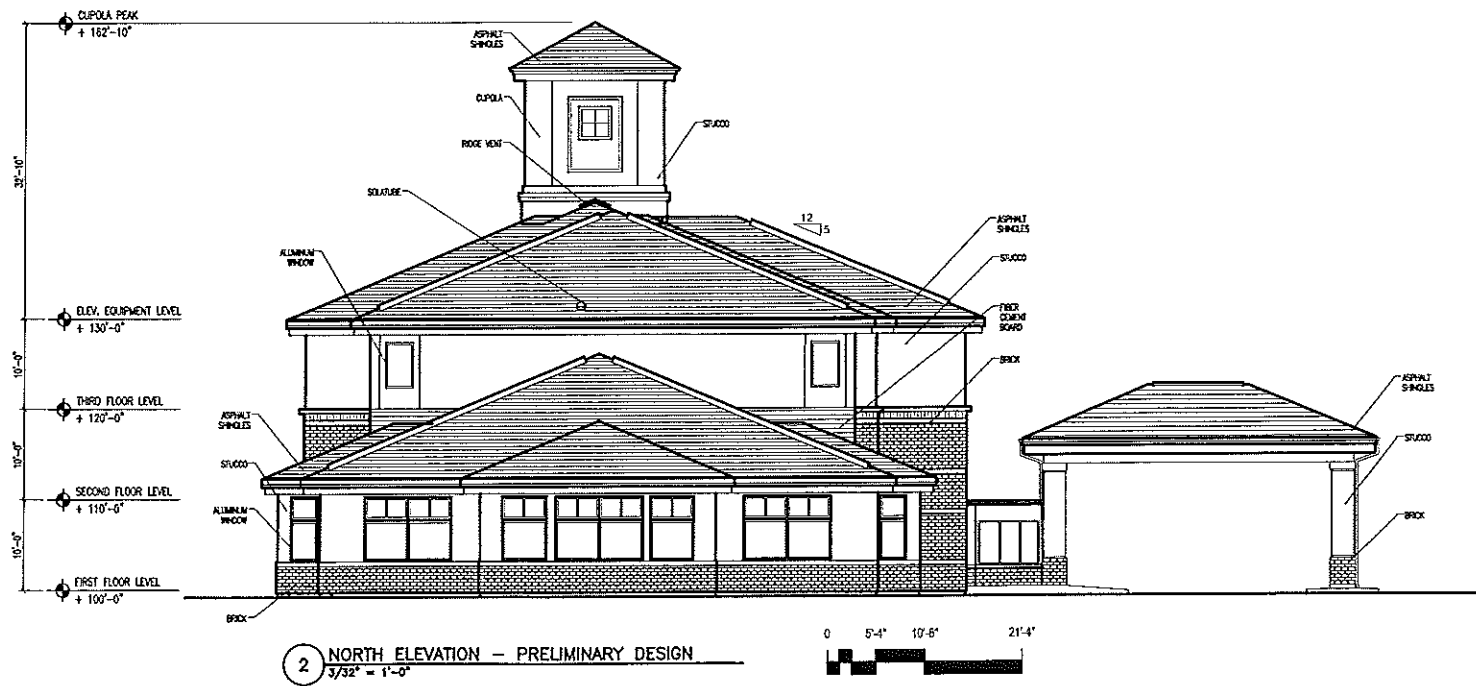
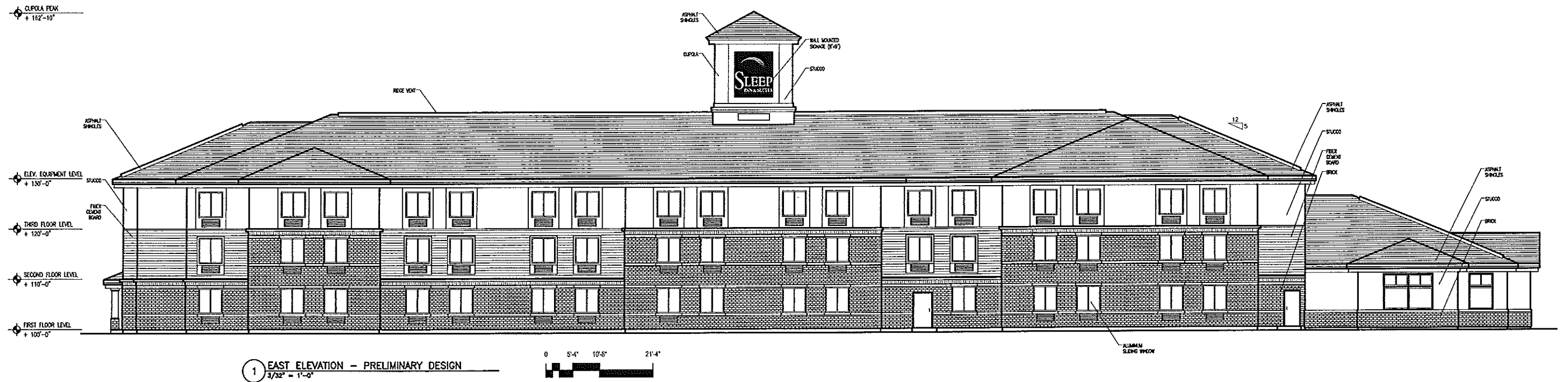
1 ELEVATOR EQUIPMENT LEVEL PLAN - PRELIMINARY DESIGN
 3/32" = 1'-0"





1 ROOF PLAN — PRELIMINARY DESIGN
 3/32" = 1'-0"





PROJECT: Sleep Inn/AMBITOR GROUP: Site - Revised II AREA: Site GRID: Omdo
PREPARED BY: Dave - Visual Impact Lighting
VALUES ARE FC. SCALE: 1"= 150 FT. HORIZ GRID (C), HORIZ CALC. Z= 0.0

Computed in accordance with IES recommendations
Statistics

GROUP	MIN	MAX	AVE	AVEMIN	MAX/MIN
(C)	0.06	22.75	1.97	N/A	N/A

TYPE	QUANTITY	DESCRIPTION
5	3	Standard, Ball, NA, Conc. Pav.
		(C) HL-4<R>E-410<D>-11P=0.81;
R1	4	PL32528 PENNOLUX LF848-084V-TONGRE, Open Downlights RECESSED HID LITEROX DOWNLIGHT, CLEAR ALZAK REFLECTOR, LAMPS: (U) CDM370<CUM, PHILIPS>, 5700 LUMENS, BLST, STANDARD, ILF=0.65 @10.00
CA	5	Single Circuit, 25' SSS, Conc. Pour
		(1) OI <CR1-H40-1E>-11P=0.81;
OW	11	Landscaping, 18" H.
		(C) W1-4<MC>-179E<CS>-11P=0.72;

