





STATE BOARD NUMBER  
 LICENSE NO.  
 WISCONSIN REGISTRATION #3184  
 FAX (608) 798-1001  
 PHONE (608) 798-2000  
 E-MAIL: welman@welmanarch.com

© COPYRIGHT BY WELMAN ARCHITECTS INC.

**WILDWOOD FAMILY CLINIC**  
 4901 COTTAGE GROVE ROAD  
 MADISON WI

**CLINIC ADDITION**

REVISION:	DATE:
CR#1	2008-04-27

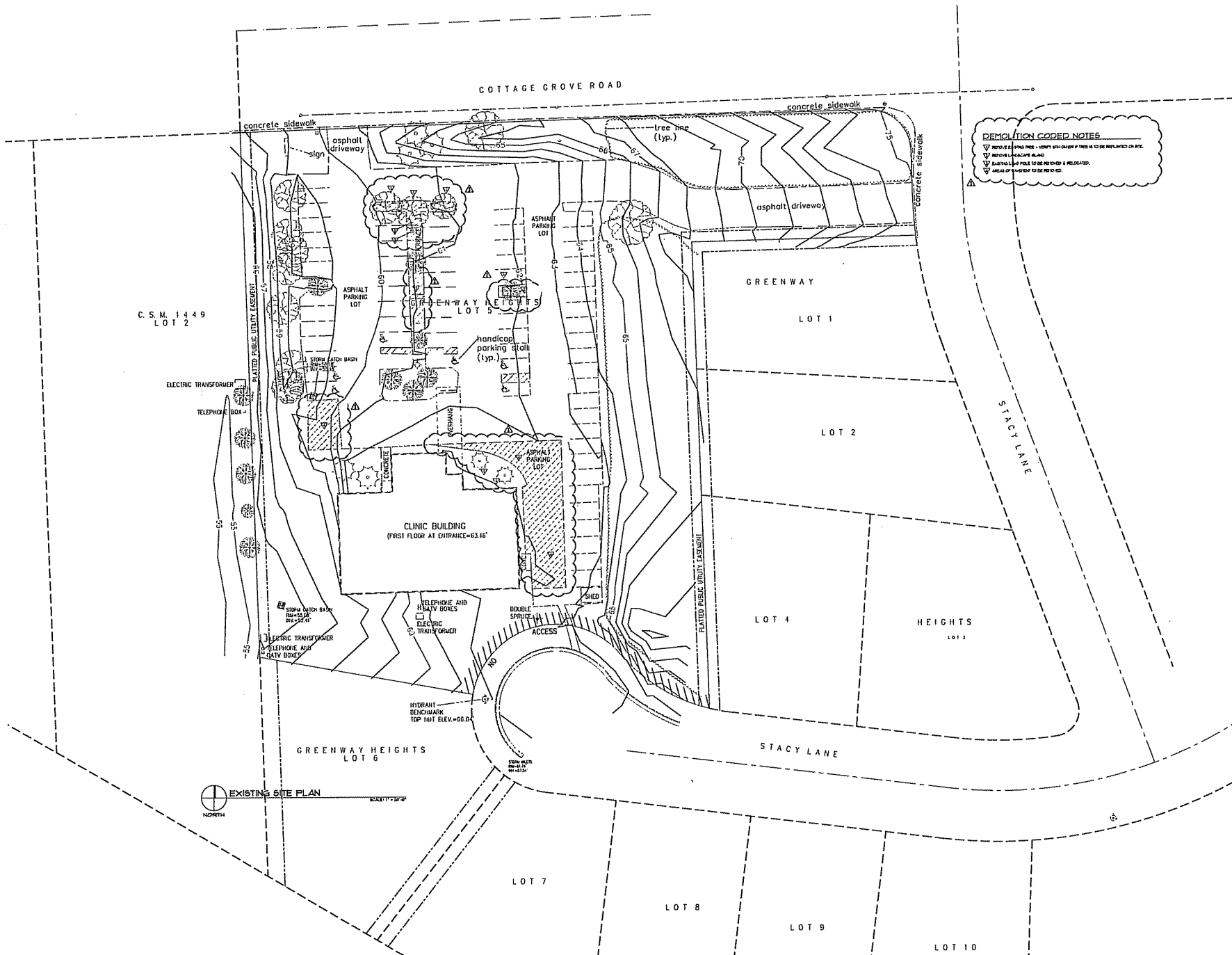
PROJECT NO: 24074

DATE: 2.06.2006

DESIGN NAME: EXISTING SITE PLAN

REVISION NO:

A0.1



**DEMOLITION CODED NOTES**

- ▽ REMOVE EXISTING TREE - VERIFY AND CHECK IF TREE IS TO BE REPLANTED ON SITE.
- ▽ REMOVE EXISTING WALL.
- ▽ EXISTING CURB POLE TO BE REMOVED & RELOCATED.
- △ AREA OF EXISTING TO BE RE-DO.

C.S.M. 1449  
 LOT 2



EXISTING SITE PLAN

SCALE: 1/8" = 1'-0"



**WELMAN  
ARCHITECTS  
I N C**

21875 EDWARDS VIEW DRIVE  
SUITE 200  
MADISON, WISCONSIN 53718  
PHONE: (608) 799-7001  
FAX: (608) 799-7000  
WWW.WELMANARCHITECTS.COM

© COPYRIGHT BY WELMAN ARCHITECTS INC.

**WILDWOOD  
FAMILY  
CLINIC**  
4901 COTTAGE GROVE ROAD  
MADISON WI

CLINIC ADDITION

REVISION:  
C.B.P. 2008-04-27  
▲  
▲  
▲  
▲

PROJECT NO: 24074

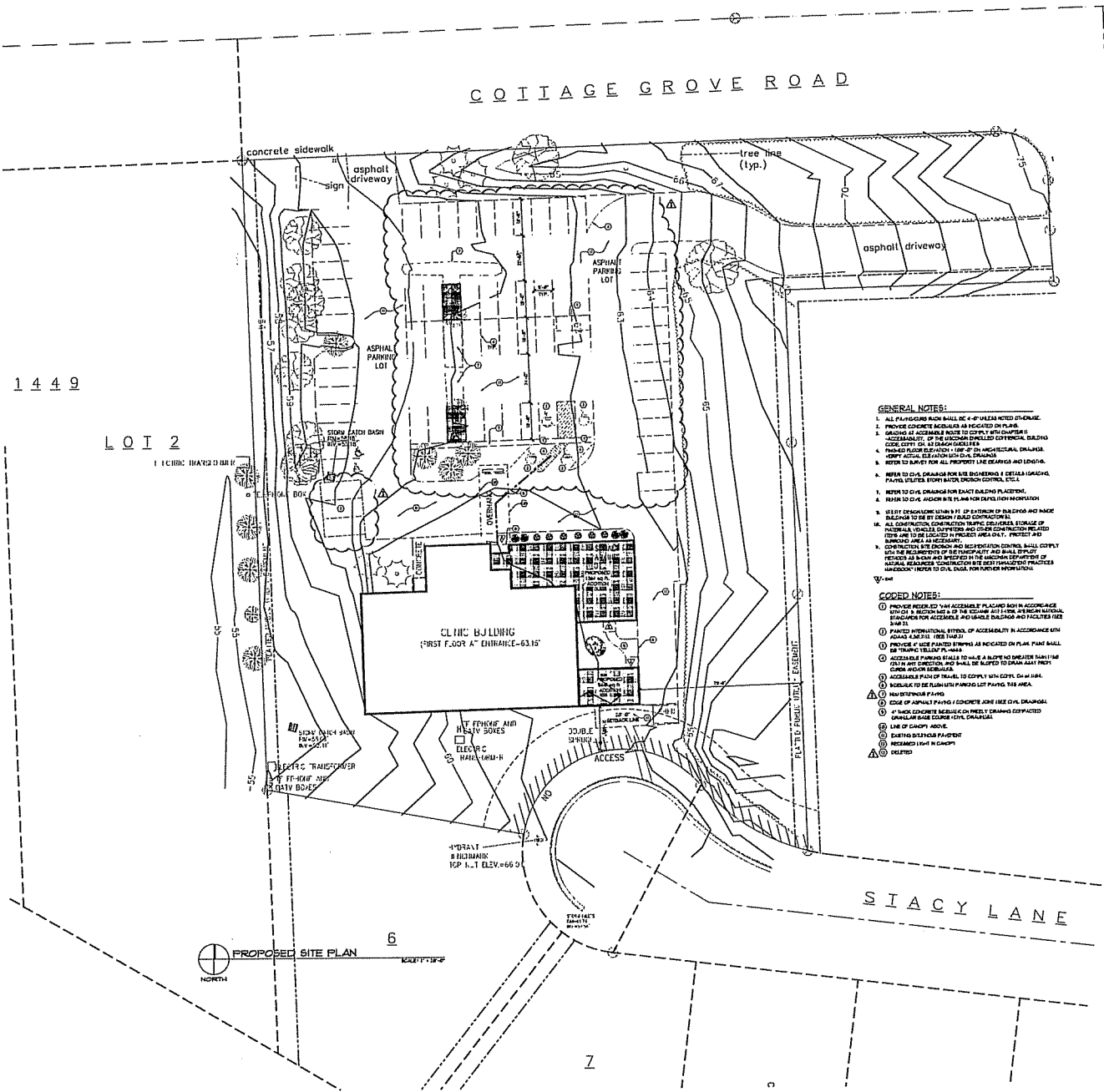
DATE: 2.06.2006

CLIENT NAME:

SITE DEVELOPMENT PLAN

REVISION:

A0.2



- GENERAL NOTES:**
1. ALL FINISHES AND SCHEDULES AS NOTED ON DRAWING.
  2. PROVIDE CONCRETE SCHEDULES AS NOTED ON PLAN.
  3. GRADING AS ACCESSIBLE ROUTE TO COMPLY WITH CHAPTER 103.05(4) OF THE WISCONSIN BUILDING CODE, BUILDING CODE COMPLY WITH 2003 INTERNATIONAL BUILDING CODE WITH ALL AMENDMENTS.
  4. FINISH FLOOR ELEVATION 1100.00 ON UNFINISHED FLOORING. VERIFY ACTUAL ELEVATION WITH CIVIL DRAWINGS.
  5. REFER TO ARCHITECT FOR ALL FINISHES, LINE SHADINGS AND LEGENDS.
  6. REFER TO CIVIL DRAWINGS FOR THE SCHEDULING & DETAILS (SCHEDULES, PARTS, DETAILS, ELEVATION, DIMENSIONS, ETC.).
  7. REFER TO CIVIL DRAWINGS FOR EXACT BUILDING PLACEMENT.
  8. REFER TO CIVIL ARCHITECT FOR PLAN FOR DETAILS FROM INFORMATION.
  9. VERIFY DIMENSIONS WITH 3/4" OF 1/4" TOLERANCE OF BUILDING AND MAKE ADJUSTMENTS TO BE ACCORDING TO CONTRACTOR'S PRACTICE.
  10. ALL CONSTRUCTION CONSTRUCTION TRAFFIC DEVIATES FROM THE NORMAL ROUTE OF TRAFFIC AND OTHER CONSTRUCTION RELATED TRAFFIC ARE TO BE KEPT OFF PROJECT AREA ONLY. PROTECT AND MAINTAIN ALL NECESSARY.
  11. CONSTRUCTION SITE FENCING AND SUPERVISION CONTROL SHALL COMPLY WITH THE REQUIREMENTS OF THE MUNICIPALITY AND SHALL DISPLAY LEGALS AS NOTED AND SPECIFIED IN THE WISCONSIN DEPARTMENT OF NATURAL RESOURCES CONSTRUCTION SITE BEST MANAGEMENT PRACTICES HANDBOOK (REFER TO CIVIL DRAWING FOR FURTHER INFORMATION).

- CODED NOTES:**
1. PROVIDE REFERRED TO THE ACCESSIBLE PLACED FOR IN ACCORDANCE WITH THE REQUIREMENTS OF THE WISCONSIN BUILDING CODE AND NATIONAL STANDARDS FOR ACCESSIBLE AND USABLE BUILDINGS AND FACILITIES (2010 ADAAG).
  2. PAINTED INTERNATIONAL SYMBOLS OF ACCESSIBILITY IN ACCORDANCE WITH ADAAG 2.01.11 (SEE TABLE).
  3. PROVIDE 4" WIDE PAINTED STRIPES AS INDICATED ON PLAN. PAINT SHALL BE TRAFFIC YELLOW PA-158.
  4. ACCESSIBLE PARKING SHALL BE 9'6" WIDE BY 18'0" DEEPER THAN THE 20' BY 10' STANDARD AND SHALL BE ADJACENT TO DRIVEWAY FRONT CURB AND/OR SIDEWALK.
  5. ACCESSIBLE PARKING SHALL BE 15'0" WIDE BY 30'0" DEEPER THAN THE 20' BY 10' STANDARD AND SHALL BE ADJACENT TO DRIVEWAY FRONT CURB AND/OR SIDEWALK.
  6. ACCESSIBLE PARKING SHALL BE 15'0" WIDE BY 30'0" DEEPER THAN THE 20' BY 10' STANDARD AND SHALL BE ADJACENT TO DRIVEWAY FRONT CURB AND/OR SIDEWALK.
  7. ACCESSIBLE PARKING SHALL BE 15'0" WIDE BY 30'0" DEEPER THAN THE 20' BY 10' STANDARD AND SHALL BE ADJACENT TO DRIVEWAY FRONT CURB AND/OR SIDEWALK.
  8. EDGE OF ASPHALT PAVING / CONCRETE AS PER CIVIL DRAWINGS.
  9. BACK CONCRETE SHALL BE ON PRECAST CONCRETE FORMWORK COMPACTED CONCRETE SHALL BE COMPACTED.
  10. LINE OF GRABBY AND-E.
  11. EXISTING BUILDING FOOTPRINT.
  12. REMOVED (SEE IN PLAN).
  13. DELIMITED.

PROPOSED SITE PLAN  
NORTH

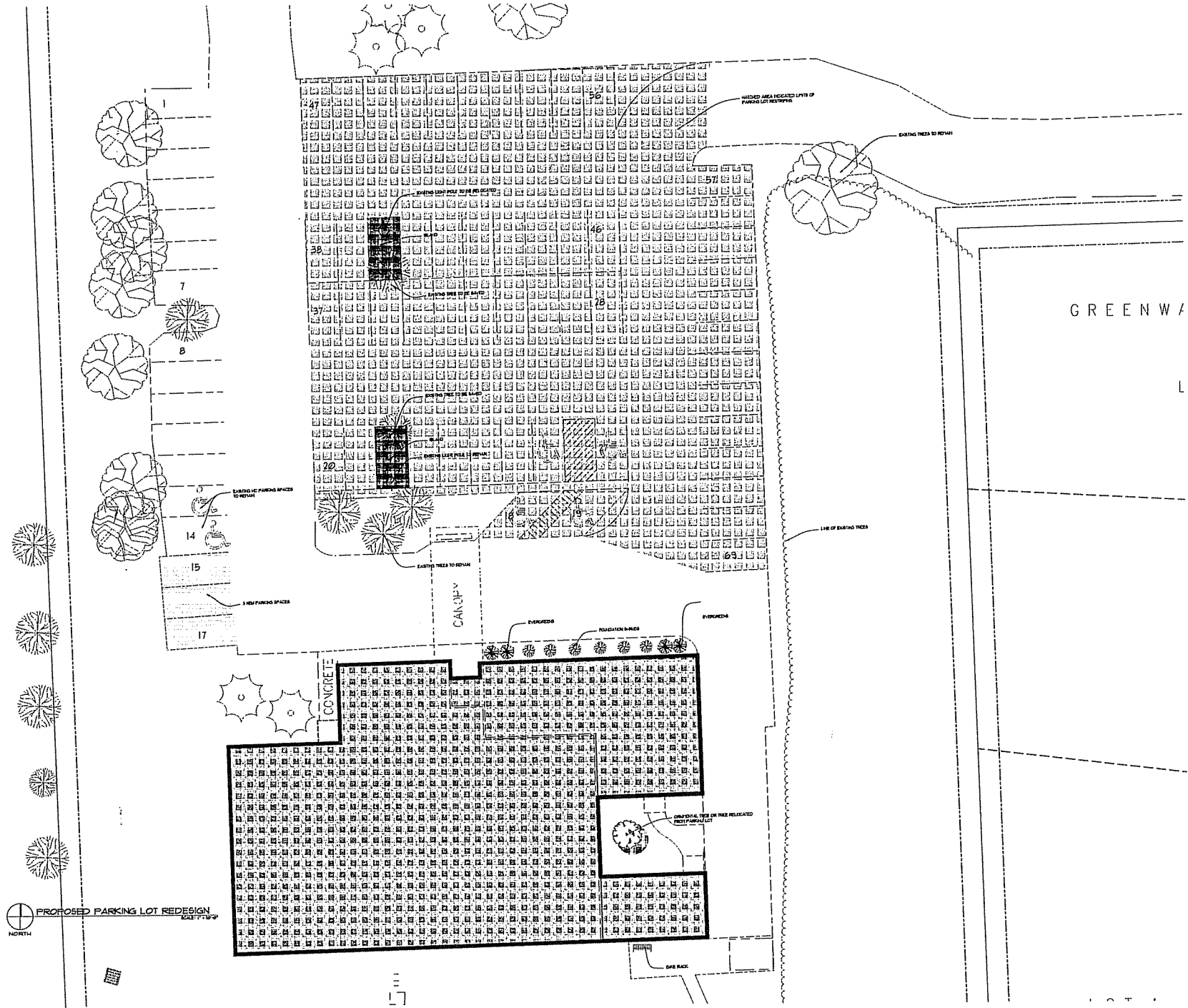
1449


LOT 2

STACY LANE

COTTAGE GROVE ROAD

4 9




**PROPOSED PARKING LOT REDESIGN**  
 DATE: 7/1/09

  
**WELMAN ARCHITECTS**  
 I N C  
 2475 LONGVIEW DRIVE  
 SUITE 300  
 MADISON, WISCONSIN 53718  
 FAX: (608) 778-7633  
 PHONE: (608) 778-7600  
 E-MAIL: [info@welman.com](mailto:info@welman.com)

© COPYRIGHT BY WELMAN ARCHITECTS INC.

**WILDWOOD FAMILY CLINIC**  
 4901 COTTAGE GROVE ROAD  
 MADISON WI

CLINIC ADDITION

REVISION:	
▲	
▲	
▲	

PROJECT NO: 24074

DATE: 2.06.2006

CLIENT NAME:  
PARKING LOT PLAN

CLIENT NO:

A0.3





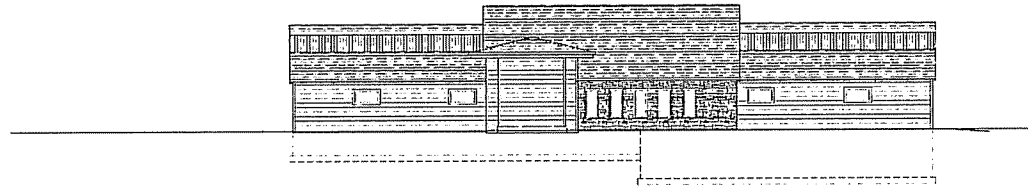




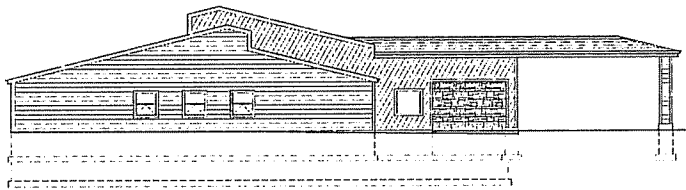
**WELMAN**  
ARCHITECTS  
I N C

2875 22ND WISN DRIVE  
SUITE 300  
WALDENIA, WISCONSIN 53194  
PH: (262) 796-1001  
FAX: (262) 796-1001  
E-MAIL: info@welman.com

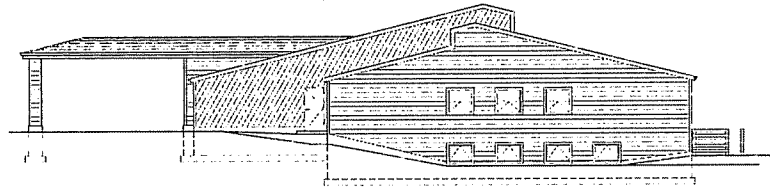
© COPYRIGHT BY WELMAN  
ARCHITECTS INC.



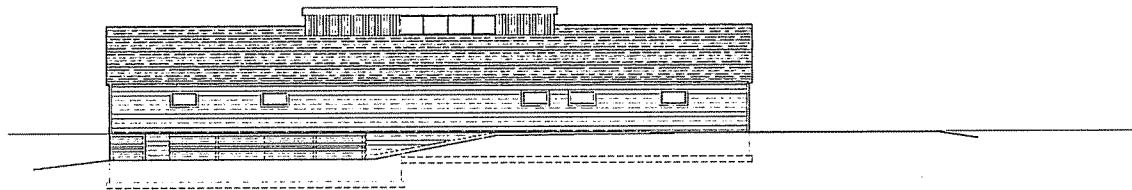
1 EXISTING NORTH ELEVATION  
SCALE: 1/8" = 1'-0"



2 EXISTING EAST ELEVATION  
SCALE: 1/8" = 1'-0"



3 EXISTING WEST ELEVATION  
SCALE: 1/8" = 1'-0"



4 EXISTING SOUTH ELEVATION  
SCALE: 1/8" = 1'-0"

**WILDWOOD  
FAMILY  
CLINIC**  
4901 COTTAGE  
GROVE ROAD  
MADISON WI

CLINIC ADDITION

REVISION:	DATE:
1	2008-04-27
2	
3	
4	

PROJECT NO: 24074

DATE: 2.04.2008

DESIGNER NAME:

EXISTING ELEVATIONS

REVISION NO:

.....  
A2.1  
.....



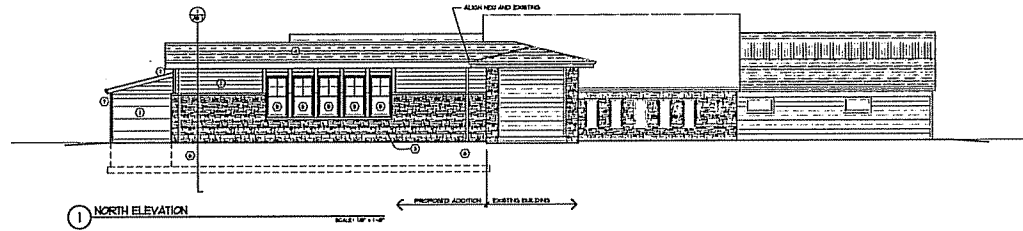


**WELMAN**  
ARCHITECTS  
INC.

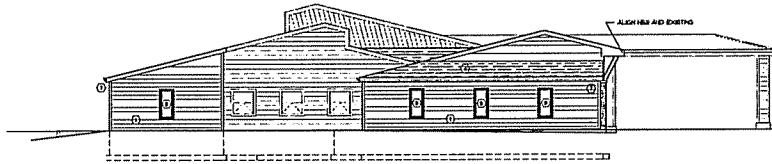
1875 LINDS VIEW DRIVE  
SUITE 300  
WATERLOO, WISCONSIN 53186  
FAX: (608) 796-7001  
PHONE: (608) 796-7000  
E-MAIL: info@welmaninc.com

© COPYRIGHT BY WELMAN  
ARCHITECTS INC.

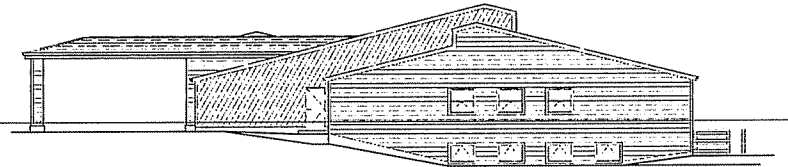
- ELEVATION CODED NOTES:**
- ① HORIZONTAL CEDAR SHINGLES AND TRIM TO MATCH EXISTING.
  - ② ROOF VENTS
  - ③ SIDING VENEER TO MATCH EXISTING.
  - ④ ASPHALT SHINGLES TO MATCH EXISTING.  
NOTE: PROVIDE ALUMINUM FLASH FOR ROOF TO EXISTING CHANGING.
  - ⑤ ROOF SKEW VENT.
  - ⑥ DUAL SPLIT
  - ⑦ WOOD TRIM TO MATCH EXISTING.



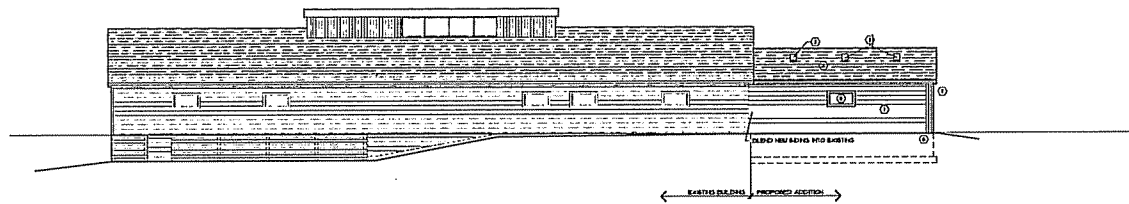
① NORTH ELEVATION SCALE 1/4\"/>



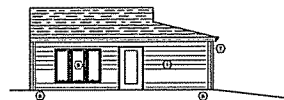
② EAST ELEVATION SCALE 1/4\"/>



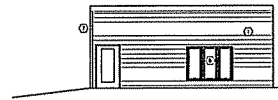
③ WEST ELEVATION SCALE 1/4\"/>



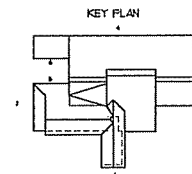
④ SOUTH ELEVATION SCALE 1/4\"/>



⑤ SOUTH ELEVATION SCALE 1/4\"/>



⑥ NORTH ELEVATION SCALE 1/4\"/>



**WILDWOOD  
FAMILY  
CLINIC**  
4901 COTTAGE  
GROVE ROAD  
MADISON WI

**CLINIC ADDITION**

REVISION:	DATE:
C.A.P. Δ	2008-04-27
Δ	
Δ	
Δ	

PROJECT NO: 24074

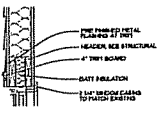
DATE: 2.06.2006

DESIGN NAME:

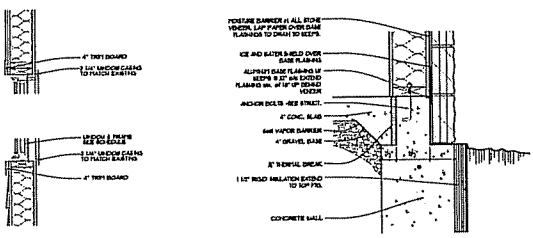
PROPOSED ELEVATIONS

DESIGN NO:

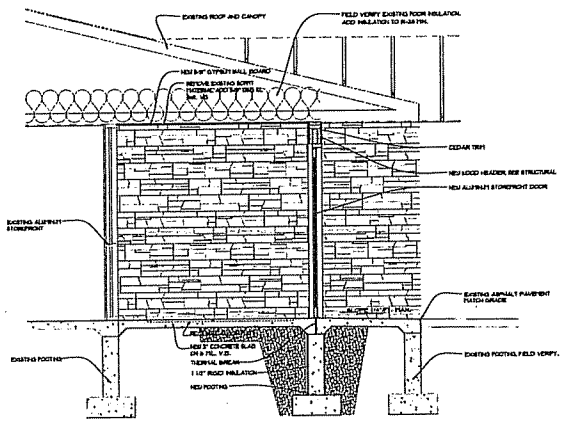
A2.2



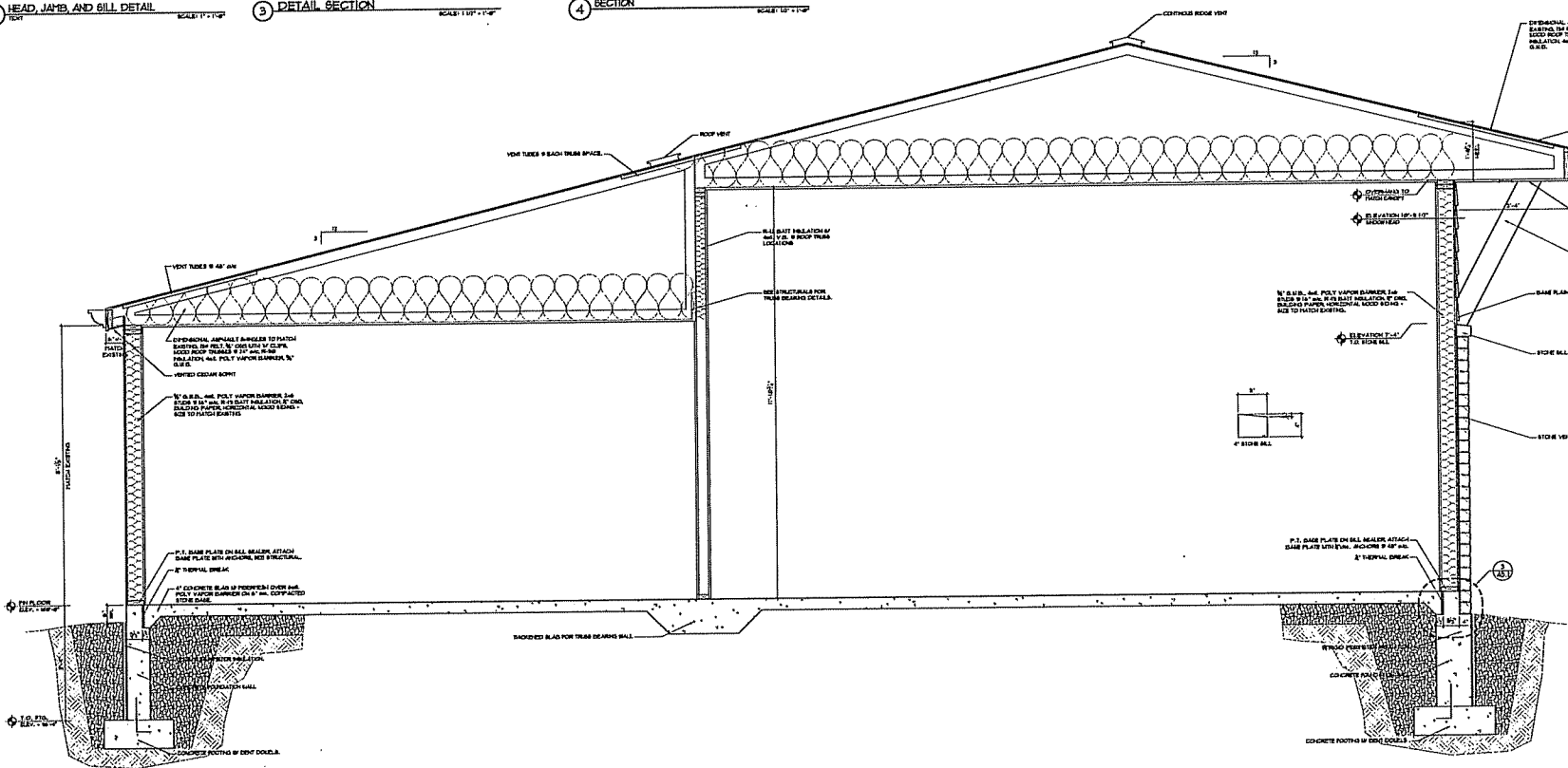
2 LEAD, JAMB, AND SILL DETAIL SCALE: 1/2\"/>



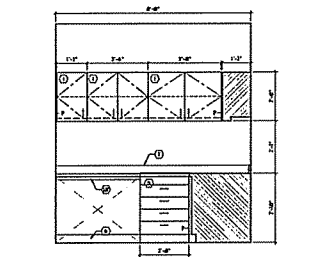
3 DETAIL SECTION SCALE: 1/2\"/>



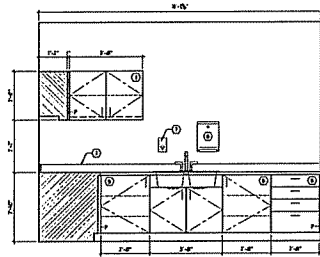
4 SECTION SCALE: 1/2\"/>



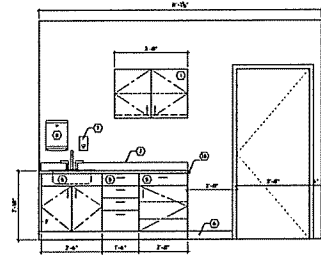
1 BUILDING SECTION SCALE: 1/2\"/>



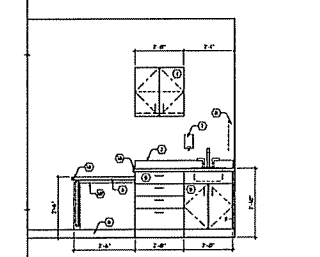
1 SOILED UTILITY  
 CONSTRUCTION: 1'-0" DEEP  
 UPPER CABINETS: 1'-0" DEEP  
 SCALE: 1/4" = 1'-0"



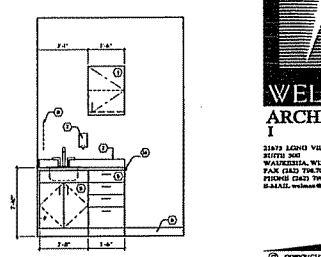
2 SOILED UTILITY  
 CONSTRUCTION: 1'-0" DEEP  
 UPPER CABINETS: 1'-0" DEEP  
 SCALE: 1/4" = 1'-0"



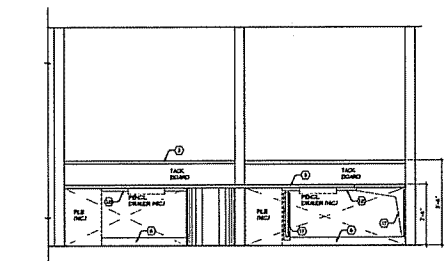
3 PROCEDURE ROOM  
 CONSTRUCTION: 1'-0" DEEP  
 UPPER CABINETS: 1'-0" DEEP  
 SCALE: 1/4" = 1'-0"



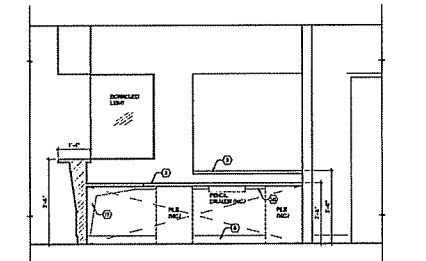
4 B.D.E.K.G.  
 CONSTRUCTION: 1'-0" DEEP  
 UPPER CABINETS: 1'-0" DEEP  
 SCALE: 1/4" = 1'-0"



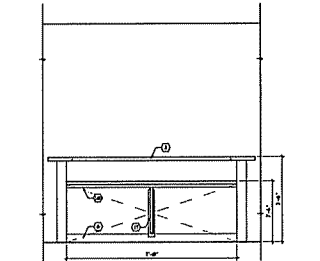
5 PHYSICAL THERAPY  
 CONSTRUCTION: 1'-0" DEEP  
 UPPER CABINETS: 1'-0" DEEP  
 SCALE: 1/4" = 1'-0"



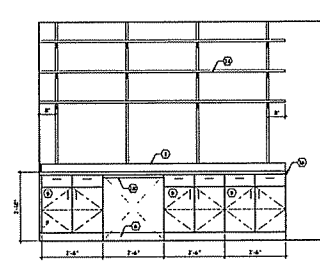
6 ADMINISTRATION  
 CONSTRUCTION: 1'-0" DEEP  
 UPPER CABINETS: 1'-0" DEEP  
 SCALE: 1/4" = 1'-0"



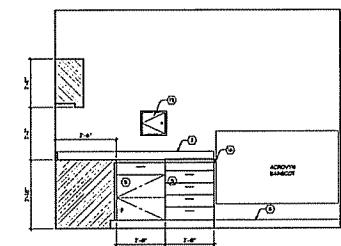
7 ADMINISTRATION  
 CONSTRUCTION: 1'-0" DEEP  
 UPPER CABINETS: 1'-0" DEEP  
 SCALE: 1/4" = 1'-0"



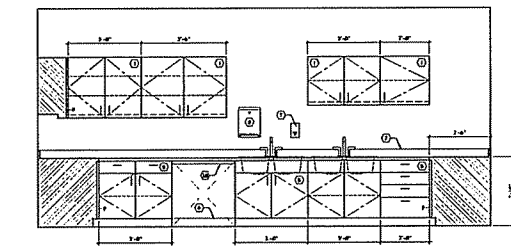
8 ADMINISTRATION - BY OWNER  
 CONSTRUCTION: 1'-0" DEEP  
 UPPER CABINETS: 1'-0" DEEP  
 SCALE: 1/4" = 1'-0"



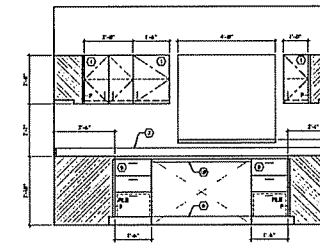
9 ADMINISTRATION - BY OWNER  
 CONSTRUCTION: 1'-0" DEEP  
 UPPER CABINETS: 1'-0" DEEP  
 SCALE: 1/4" = 1'-0"



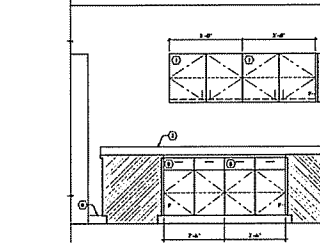
10 LAB  
 CONSTRUCTION: 2'-0" DEEP  
 UPPER CABINETS: 1'-0" DEEP  
 SCALE: 1/4" = 1'-0"



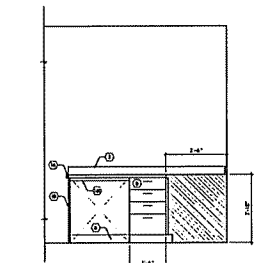
11 LAB  
 CONSTRUCTION: 2'-0" DEEP  
 UPPER CABINETS: 1'-0" DEEP  
 SCALE: 1/4" = 1'-0"



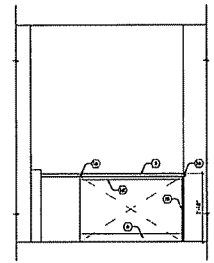
12 LAB  
 CONSTRUCTION: 2'-0" DEEP  
 UPPER CABINETS: 1'-0" DEEP  
 SCALE: 1/4" = 1'-0"



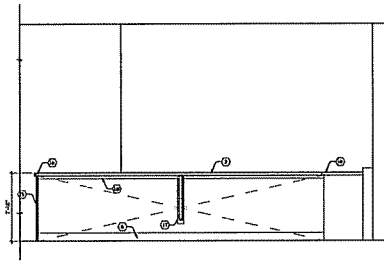
13 LAB  
 CONSTRUCTION: 2'-0" DEEP  
 UPPER CABINETS: 1'-0" DEEP  
 SCALE: 1/4" = 1'-0"



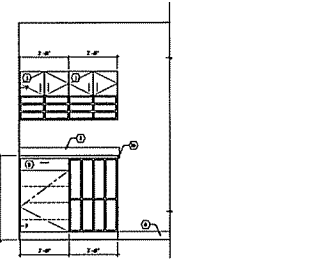
14 LAB  
 CONSTRUCTION: 2'-0" DEEP  
 UPPER CABINETS: 1'-0" DEEP  
 SCALE: 1/4" = 1'-0"



15 NURSE STATION  
 CONSTRUCTION: 1'-0" DEEP  
 SCALE: 1/4" = 1'-0"



16 NURSE STATION  
 CONSTRUCTION: 1'-0" DEEP  
 SCALE: 1/4" = 1'-0"

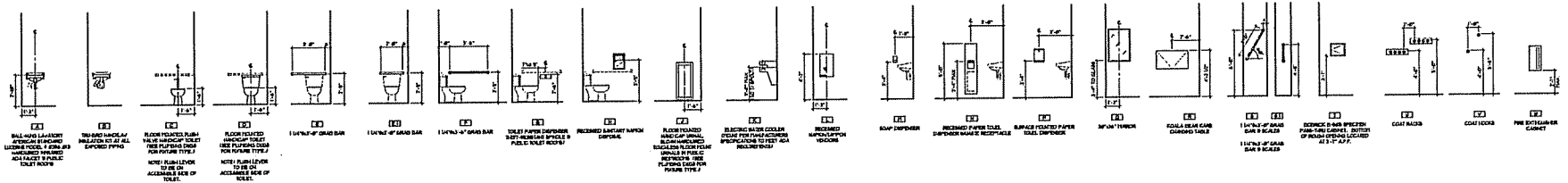


17 X-RAY  
 CONSTRUCTION: 1'-0" DEEP  
 SCALE: 1/4" = 1'-0"

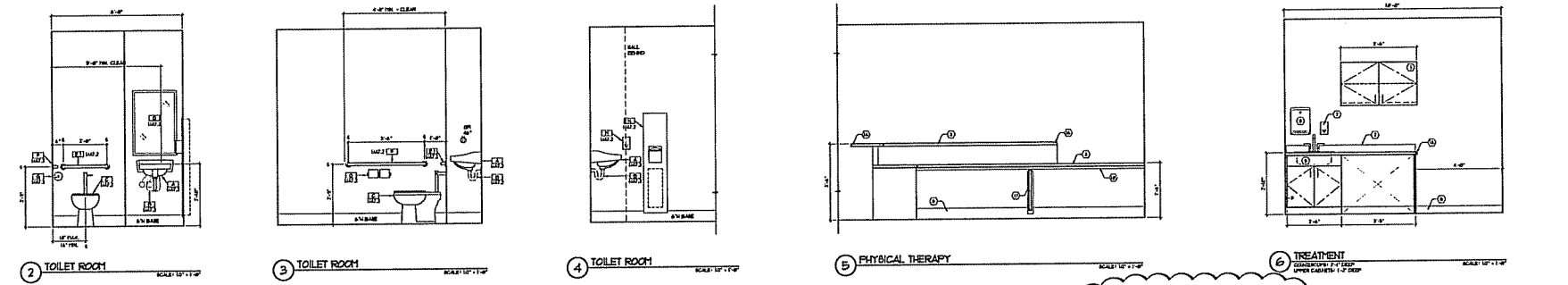
**ELEVATION CODED NOTES:**

- ① PLASTIC LAMINATE ON 1/4" PARTICLE BOARD WALL CABINETS 1/2" DEEP AT CHANGEOVER PLACES LAMINATE ON 1/4" PARTICLE BOARD BEHIND DOORS ON ALL ADJUSTABLE SELF STORAGE.
- ② 1/4" DEEP PLASTIC LAMINATE ON 1/4" PARTICLE BOARD CONTOUR.
- ③ 1/4" DEEP PLASTIC LAMINATE ON 1/4" PARTICLE BOARD CONTOUR TOP.
- ④ 1/4" DEEP PLASTIC LAMINATE ON 1/4" PARTICLE BOARD CONTOUR TOP.
- ⑤ 1/4" DEEP PLASTIC LAMINATE ON 1/4" PARTICLE BOARD CONTOUR TOP.
- ⑥ 1/4" DEEP PLASTIC LAMINATE ON 1/4" PARTICLE BOARD CONTOUR TOP.
- ⑦ 1/4" DEEP PLASTIC LAMINATE ON 1/4" PARTICLE BOARD CONTOUR TOP.
- ⑧ 1/4" DEEP PLASTIC LAMINATE ON 1/4" PARTICLE BOARD CONTOUR TOP.
- ⑨ 1/4" DEEP PLASTIC LAMINATE ON 1/4" PARTICLE BOARD CONTOUR TOP.
- ⑩ 1/4" DEEP PLASTIC LAMINATE ON 1/4" PARTICLE BOARD CONTOUR TOP.
- ⑪ 1/4" DEEP PLASTIC LAMINATE ON 1/4" PARTICLE BOARD CONTOUR TOP.
- ⑫ 1/4" DEEP PLASTIC LAMINATE ON 1/4" PARTICLE BOARD CONTOUR TOP.
- ⑬ 1/4" DEEP PLASTIC LAMINATE ON 1/4" PARTICLE BOARD CONTOUR TOP.
- ⑭ 1/4" DEEP PLASTIC LAMINATE ON 1/4" PARTICLE BOARD CONTOUR TOP.
- ⑮ 1/4" DEEP PLASTIC LAMINATE ON 1/4" PARTICLE BOARD CONTOUR TOP.
- ⑯ 1/4" DEEP PLASTIC LAMINATE ON 1/4" PARTICLE BOARD CONTOUR TOP.
- ⑰ 1/4" DEEP PLASTIC LAMINATE ON 1/4" PARTICLE BOARD CONTOUR TOP.
- ⑱ 1/4" DEEP PLASTIC LAMINATE ON 1/4" PARTICLE BOARD CONTOUR TOP.
- ⑲ 1/4" DEEP PLASTIC LAMINATE ON 1/4" PARTICLE BOARD CONTOUR TOP.
- ⑳ 1/4" DEEP PLASTIC LAMINATE ON 1/4" PARTICLE BOARD CONTOUR TOP.
- ㉑ 1/4" DEEP PLASTIC LAMINATE ON 1/4" PARTICLE BOARD CONTOUR TOP.
- ㉒ 1/4" DEEP PLASTIC LAMINATE ON 1/4" PARTICLE BOARD CONTOUR TOP.
- ㉓ 1/4" DEEP PLASTIC LAMINATE ON 1/4" PARTICLE BOARD CONTOUR TOP.
- ㉔ 1/4" DEEP PLASTIC LAMINATE ON 1/4" PARTICLE BOARD CONTOUR TOP.
- ㉕ 1/4" DEEP PLASTIC LAMINATE ON 1/4" PARTICLE BOARD CONTOUR TOP.
- ㉖ 1/4" DEEP PLASTIC LAMINATE ON 1/4" PARTICLE BOARD CONTOUR TOP.
- ㉗ 1/4" DEEP PLASTIC LAMINATE ON 1/4" PARTICLE BOARD CONTOUR TOP.
- ㉘ 1/4" DEEP PLASTIC LAMINATE ON 1/4" PARTICLE BOARD CONTOUR TOP.
- ㉙ 1/4" DEEP PLASTIC LAMINATE ON 1/4" PARTICLE BOARD CONTOUR TOP.
- ㉚ 1/4" DEEP PLASTIC LAMINATE ON 1/4" PARTICLE BOARD CONTOUR TOP.
- ㉛ 1/4" DEEP PLASTIC LAMINATE ON 1/4" PARTICLE BOARD CONTOUR TOP.
- ㉜ 1/4" DEEP PLASTIC LAMINATE ON 1/4" PARTICLE BOARD CONTOUR TOP.
- ㉝ 1/4" DEEP PLASTIC LAMINATE ON 1/4" PARTICLE BOARD CONTOUR TOP.
- ㉞ 1/4" DEEP PLASTIC LAMINATE ON 1/4" PARTICLE BOARD CONTOUR TOP.
- ㉟ 1/4" DEEP PLASTIC LAMINATE ON 1/4" PARTICLE BOARD CONTOUR TOP.
- ㊱ 1/4" DEEP PLASTIC LAMINATE ON 1/4" PARTICLE BOARD CONTOUR TOP.
- ㊲ 1/4" DEEP PLASTIC LAMINATE ON 1/4" PARTICLE BOARD CONTOUR TOP.
- ㊳ 1/4" DEEP PLASTIC LAMINATE ON 1/4" PARTICLE BOARD CONTOUR TOP.
- ㊴ 1/4" DEEP PLASTIC LAMINATE ON 1/4" PARTICLE BOARD CONTOUR TOP.
- ㊵ 1/4" DEEP PLASTIC LAMINATE ON 1/4" PARTICLE BOARD CONTOUR TOP.
- ㊶ 1/4" DEEP PLASTIC LAMINATE ON 1/4" PARTICLE BOARD CONTOUR TOP.
- ㊷ 1/4" DEEP PLASTIC LAMINATE ON 1/4" PARTICLE BOARD CONTOUR TOP.
- ㊸ 1/4" DEEP PLASTIC LAMINATE ON 1/4" PARTICLE BOARD CONTOUR TOP.
- ㊹ 1/4" DEEP PLASTIC LAMINATE ON 1/4" PARTICLE BOARD CONTOUR TOP.
- ㊺ 1/4" DEEP PLASTIC LAMINATE ON 1/4" PARTICLE BOARD CONTOUR TOP.
- ㊻ 1/4" DEEP PLASTIC LAMINATE ON 1/4" PARTICLE BOARD CONTOUR TOP.
- ㊼ 1/4" DEEP PLASTIC LAMINATE ON 1/4" PARTICLE BOARD CONTOUR TOP.
- ㊽ 1/4" DEEP PLASTIC LAMINATE ON 1/4" PARTICLE BOARD CONTOUR TOP.
- ㊾ 1/4" DEEP PLASTIC LAMINATE ON 1/4" PARTICLE BOARD CONTOUR TOP.
- ㊿ 1/4" DEEP PLASTIC LAMINATE ON 1/4" PARTICLE BOARD CONTOUR TOP.

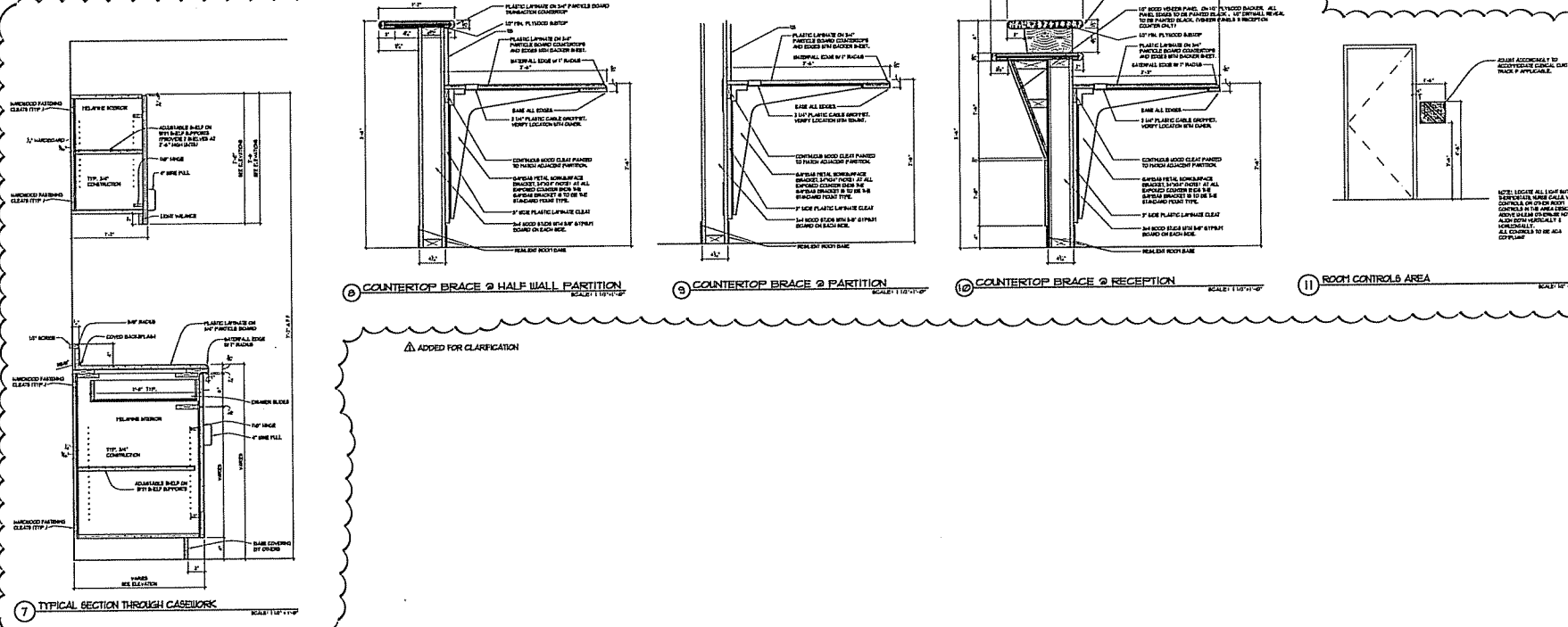
**NOTE:**  
 ALL DIMENSIONS SHOWN TO FACE UNLESS OTHERWISE NOTED.



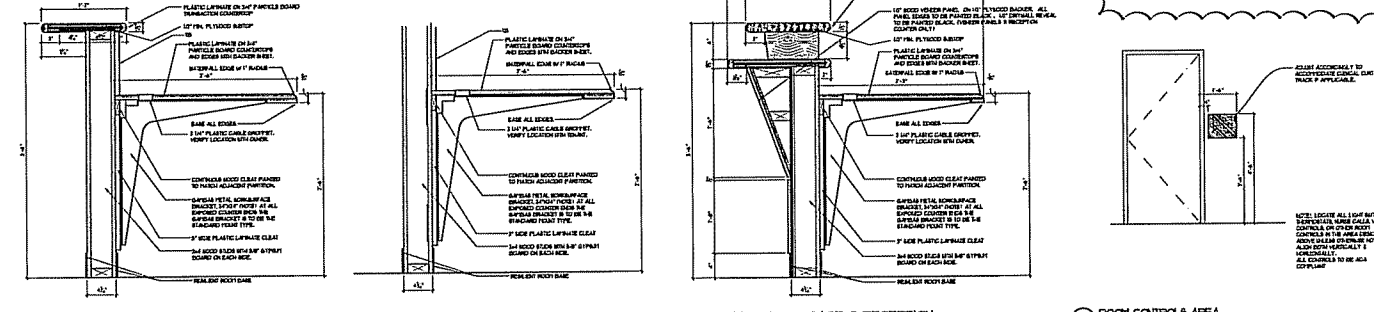
1 ACCESSORY MOUNTING HEIGHTS  
 PROVIDE TOILET ROOMS TO BE DESIGNED FOR A.D.A. REQUIREMENTS AND HEIGHTS WHERE THE ACCESSIBLE TOILET ROOMS SHALL BE CONSIDERED AS TOILETS. SEE COMMENTS ON TOILET AND TOILET ROOMS.



2 TOILET ROOM SCALE: 1/4" = 1'-0"  
 3 TOILET ROOM SCALE: 1/4" = 1'-0"  
 4 TOILET ROOM SCALE: 1/4" = 1'-0"  
 5 PHYSICAL THERAPY SCALE: 1/4" = 1'-0"  
 6 TREATMENT CONSULTATION TREATMENT ROOMS SCALE: 1/4" = 1'-0"



7 TYPICAL SECTION THROUGH CASEWORK SCALE: 1/4" = 1'-0"



8 COUNTERTOP BRACE & HALF WALL PARTITION SCALE: 1/4" = 1'-0"  
 9 COUNTERTOP BRACE & PARTITION SCALE: 1/4" = 1'-0"  
 10 COUNTERTOP BRACE & RECEPTION SCALE: 1/4" = 1'-0"

△ ADDED FOR CLARIFICATION

11 ROOM CONTROLS AREA SCALE: 1/4" = 1'-0"

**WILDWOOD FAMILY CLINIC**  
 4901 COTTAGE GROVE ROAD  
 MADISON WI

CLINIC ADDITION

REVISION:  
 C.R.#1 3/28/02  
 △  
 △  
 △

PROJECT NO: 24074

DATE: 2/04/2005

SHEET NAME:  
 INTERIOR ELEVATIONS

SHEET NO:

A7.2

