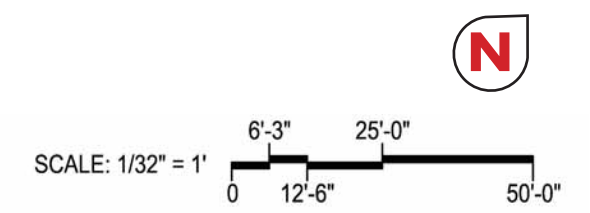
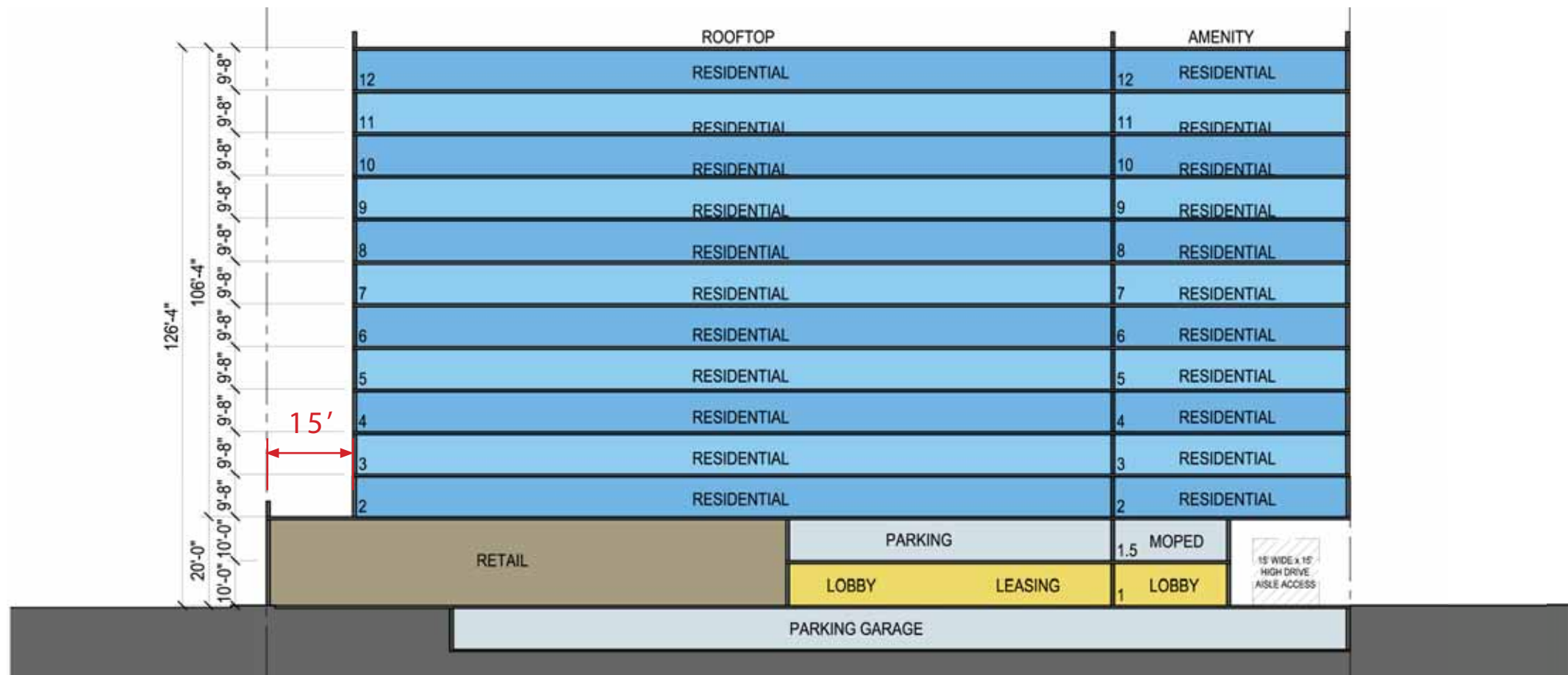
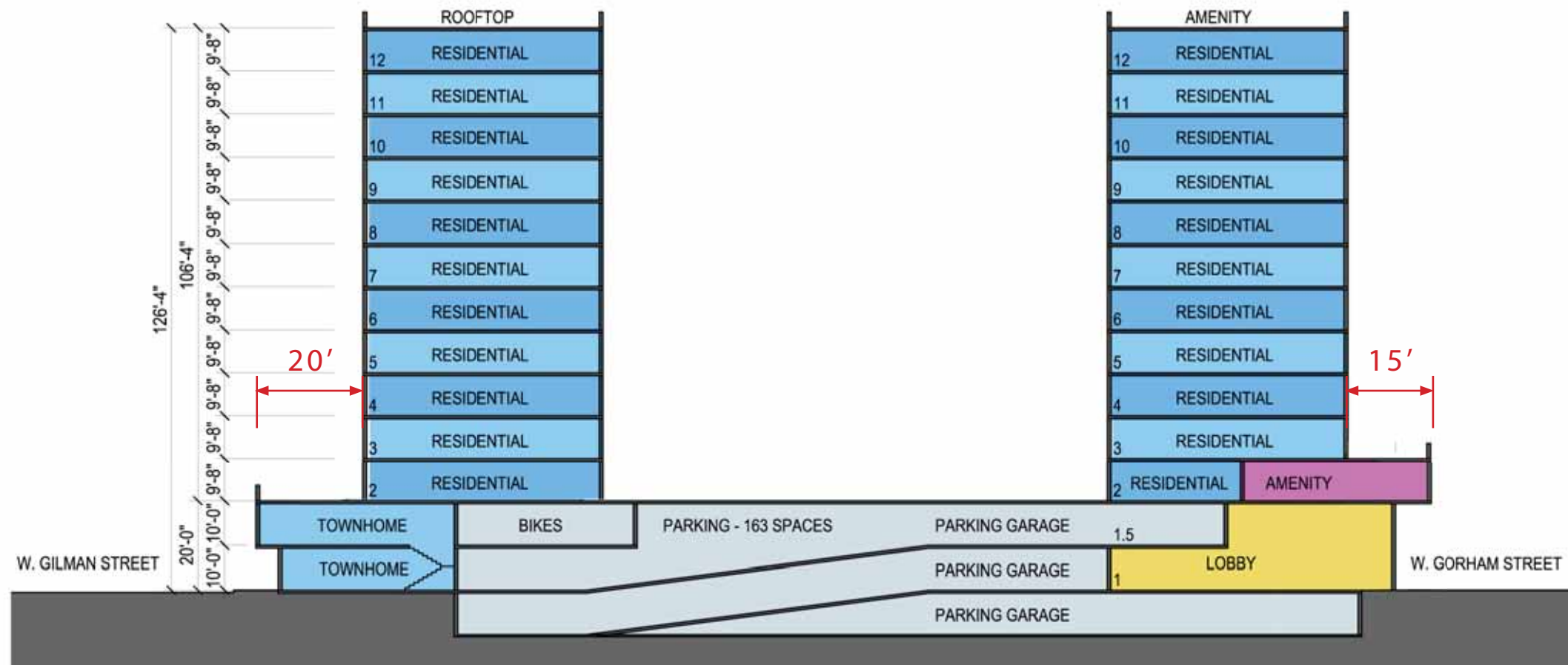
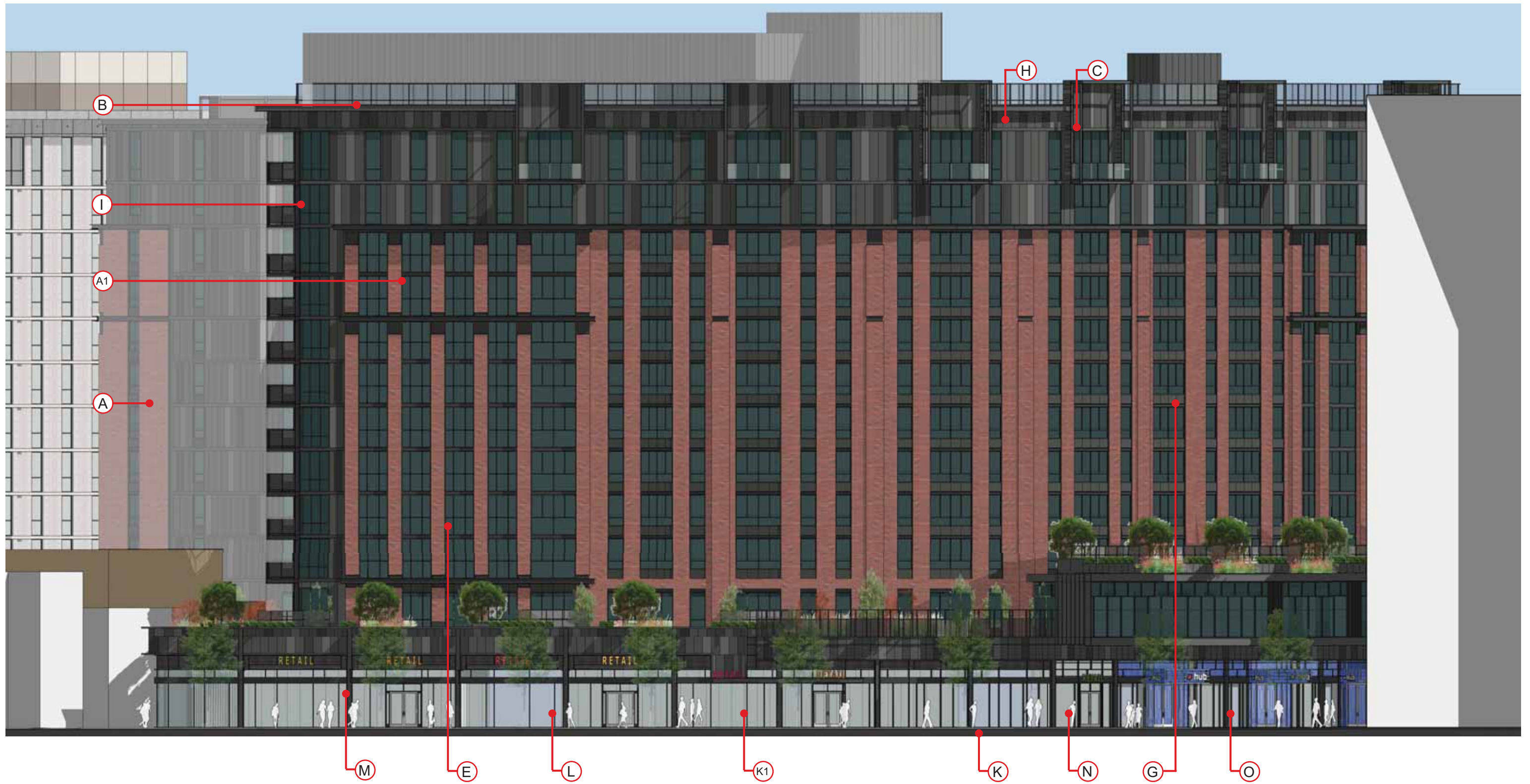


The Hub at Madison II - Revised Elevations & Perspectives Supplemental 1





Exterior Material Legend

- A Utility Brick
- A1 Brick Columns with Metal Channel Detailing
- B Metal Panel/Stucco Panel System, 3 tone
- C Roof Top Terrace Screen, Glass in Fill

- D Metal Balustrades
- E Light Grey Metal Panel
- F Aluminum Cladding System
- G Metal Channel
- H Metal Frame and Louver Frame at Balconies
- I Glass Balustrades

- J Aluminum Thermopane Operable Window System with Clear Anodized Aluminum Finish
- K Aluminum Thermopane Storefront Window System and Doors with Clear Anodized Aluminum Finish
- K1 Store Front Windows are Subject to Change Based Upon Individual Tenants Designs at Time of Leasing, To be Approved

- L Black Steel Canopy
- M Illuminated Signage (By Tennant at Retail with separate approval)
- N Louved Screen at Entries
- O Colored Glass Canopy
- P Painted Concrete/CMU Pattern Podium Wall

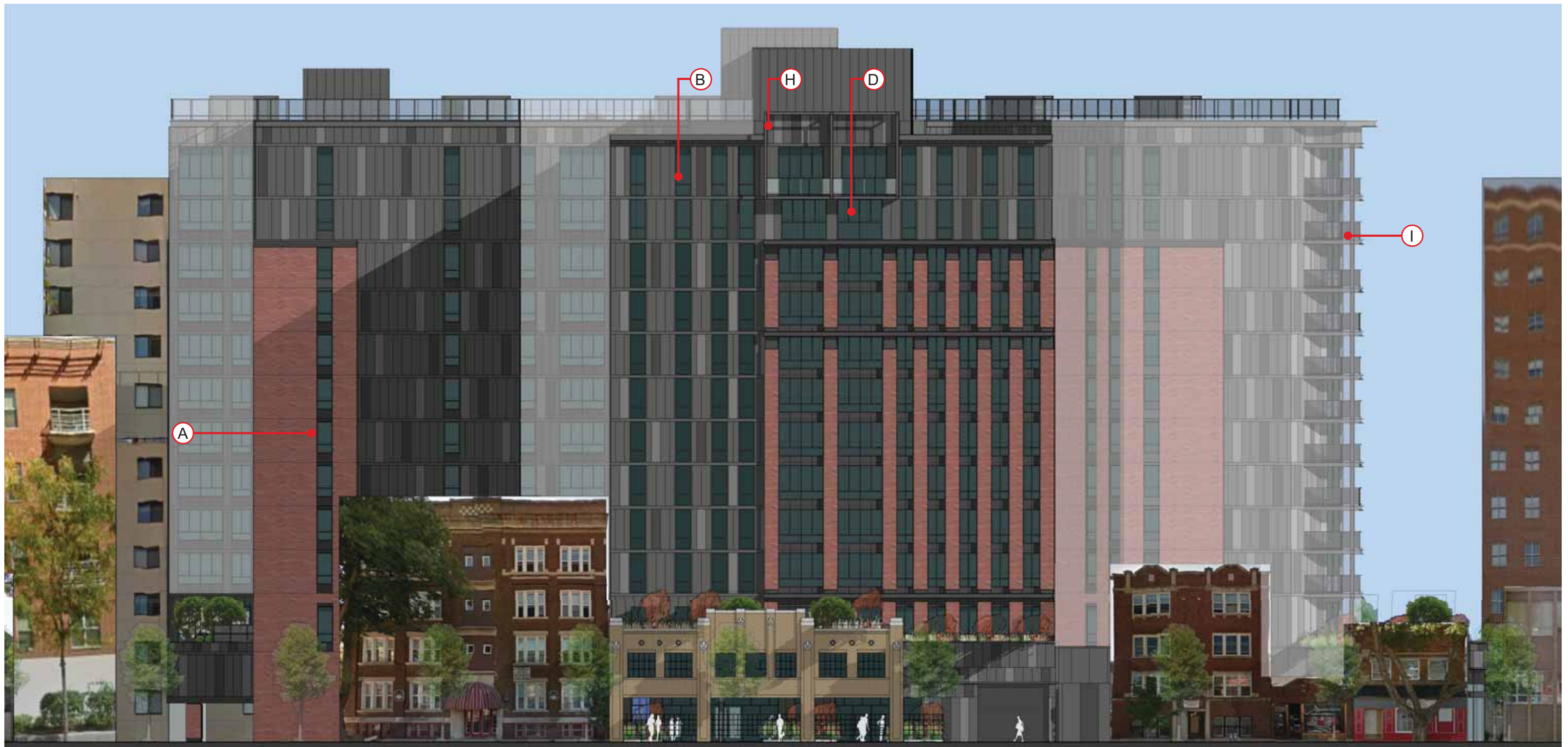




Exterior Material Legend

- | | | | |
|---|--|---|---|
| <ul style="list-style-type: none"> A Utility Brick A1 Brick Columns with Metal Channel Detailing B Metal Panel/Stucco Panel System, 3 tone C Roof Top Terrace Screen, Glass in Fill | <ul style="list-style-type: none"> D Metal Balustrades E Light Grey Metal Panel F Aluminum Cladding System G Metal Channel H Metal Frame and Louver Frame at Balconies I Glass Balustrades | <ul style="list-style-type: none"> J Aluminum Thermopane Operable Window System with Clear Anodized Aluminum Finish K Aluminum Thermopane Storefront Window System and Doors with Clear Anodized Aluminum Finish K1 Store Front Windows are Subject to Change Based Upon Individual Tenants Designs at Time of Leasing, To be Approved | <ul style="list-style-type: none"> L Black Steel Canopy M Illuminated Signage (By Tennant at Retail with separate approval) N Louved Screen at Entries O Colored Glass Canopy P Painted Concrete/CMU Pattern Podium Wall |
|---|--|---|---|





Exterior Material Legend

- | | | | |
|---|--|---|---|
| <ul style="list-style-type: none"> A Utility Brick A1 Brick Columns with Metal Channel Detailing B Metal Panel/Stucco Panel System, 3 tone C Roof Top Terrace Screen, Glass in Fill | <ul style="list-style-type: none"> D Metal Balustrades E Light Grey Metal Panel F Aluminum Cladding System G Metal Channel H Metal Frame and Louver Frame at Balconies I Glass Balustrades | <ul style="list-style-type: none"> J Aluminum Thermopane Operable Window System with Clear Anodized Aluminum Finish K Aluminum Thermopane Storefront Window System and Doors with Clear Anodized Aluminum Finish K1 Store Front Windows are Subject to Change Based Upon Individual Tenants Designs at Time of Leasing, To be Approved | <ul style="list-style-type: none"> L Black Steel Canopy M Illuminated Signage (By Tennant at Retail with separate approval) N Louved Screen at Entries O Colored Glass Canopy P Painted Concrete/CMU Pattern Podium Wall |
|---|--|---|---|





Exterior Material Legend

- | | | | |
|---|--|---|---|
| <ul style="list-style-type: none"> A Utility Brick A1 Brick Columns with Metal Channel Detailing B Metal Panel/Stucco Panel System, 3 tone C Roof Top Terrace Screen, Glass in Fill | <ul style="list-style-type: none"> D Metal Balustrades E Light Grey Metal Panel F Aluminum Cladding System G Metal Channel H Metal Frame and Louver Frame at Balconies I Glass Balustrades | <ul style="list-style-type: none"> J Aluminum Thermopane Operable Window System with Clear Anodized Aluminum Finish K Aluminum Thermopane Storefront Window System and Doors with Clear Anodized Aluminum Finish K1 Store Front Windows are Subject to Change Based Upon Individual Tenants Designs at Time of Leasing, To be Approved | <ul style="list-style-type: none"> L Black Steel Canopy M Illuminated Signage (By Tennant at Retail with separate approval) N Louved Screen at Entries O Colored Glass Canopy P Painted Concrete/CMU Pattern Podium Wall |
|---|--|---|---|

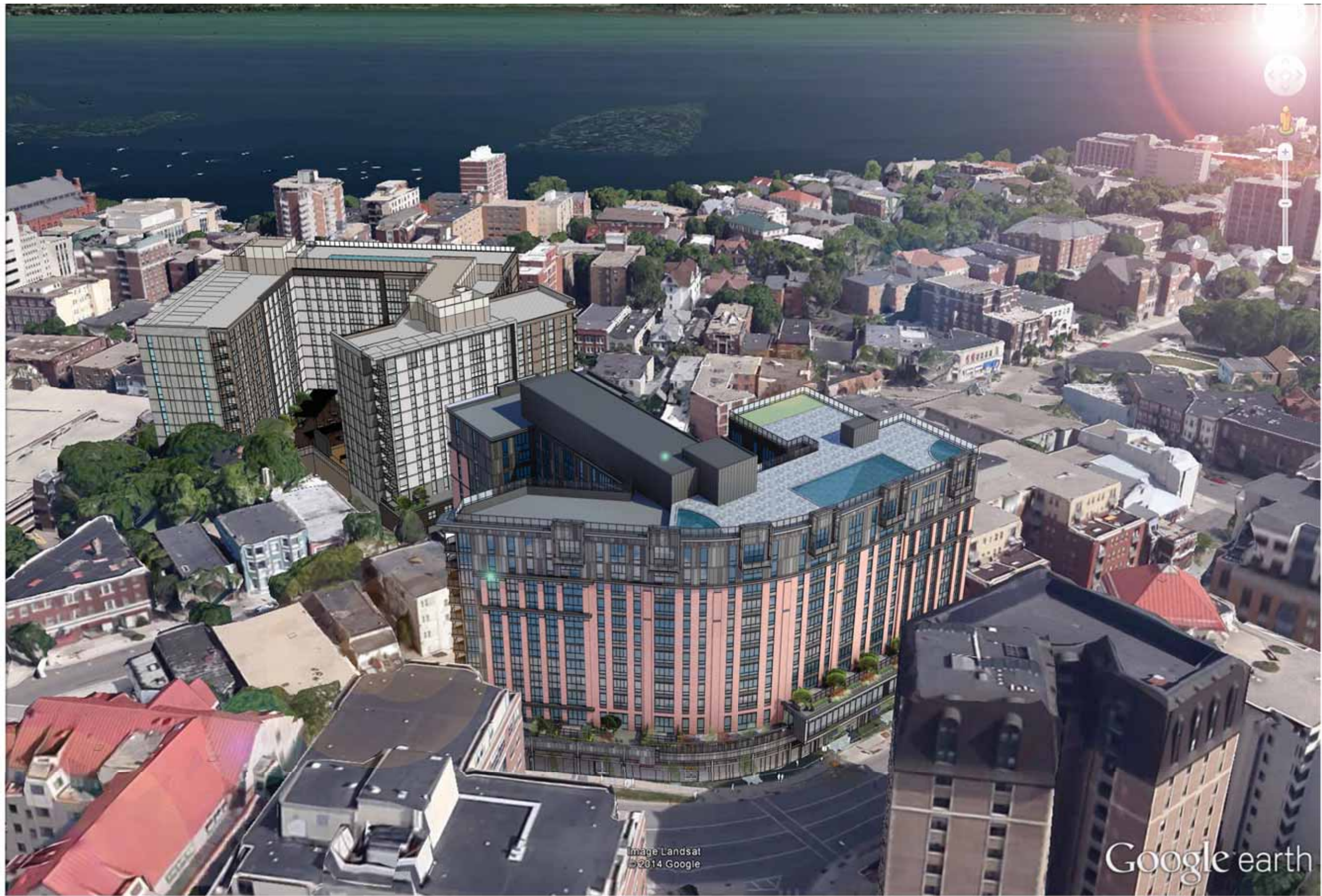




Exterior Material Legend

- | | | | |
|---|--|---|---|
| <ul style="list-style-type: none"> A Utility Brick A1 Brick Columns with Metal Channel Detailing B Metal Panel/Stucco Panel System, 3 tone C Roof Top Terrace Screen, Glass in Fill | <ul style="list-style-type: none"> D Metal Balustrades E Light Grey Metal Panel F Aluminum Cladding System G Metal Channel H Metal Frame and Louver Frame at Balconies I Glass Balustrades | <ul style="list-style-type: none"> J Aluminum Thermopane Operable Window System with Clear Anodized Aluminum Finish K Aluminum Thermopane Storefront Window System and Doors with Clear Anodized Aluminum Finish K1 Store Front Windows are Subject to Change Based Upon Individual Tenants Designs at Time of Leasing, To be Approved | <ul style="list-style-type: none"> L Black Steel Canopy M Illuminated Signage (By Tennant at Retail with separate approval) N Louved Screen at Entries O Colored Glass Canopy P Painted Concrete/CMU Pattern Podium Wall |
|---|--|---|---|





The Hub at Madison II - Revised Elevations & Perspectives Supplemental 1

Core Campus Developers | Antunovich Associates Architecture · Planning

Proposed Aerial View 1

Madison, Wisconsin | April 8, 2015



The Hub at Madison II - Revised Elevations & Perspectives Supplemental 1

Core Campus Developers | Antunovich Associates Architecture · Planning

Proposed Aerial View 2

Madison, Wisconsin | April 8, 2015



The Hub at Madison II - Revised Elevations & Perspectives Supplemental 1

Core Campus Developers | Antunovich Associates Architecture · Planning



The Hub at Madison II - Revised Elevations & Perspectives Supplemental 1

Core Campus Developers | Antunovich Associates Architecture · Planning

Proposed View North on Basset Street

Madison, Wisconsin | April 8, 2015



The Hub at Madison II - Revised Elevations & Perspectives Supplemental 1

Core Campus Developers | Antunovich Associates Architecture · Planning

Proposed View East on University Ave

Madison, Wisconsin | April 8, 2015

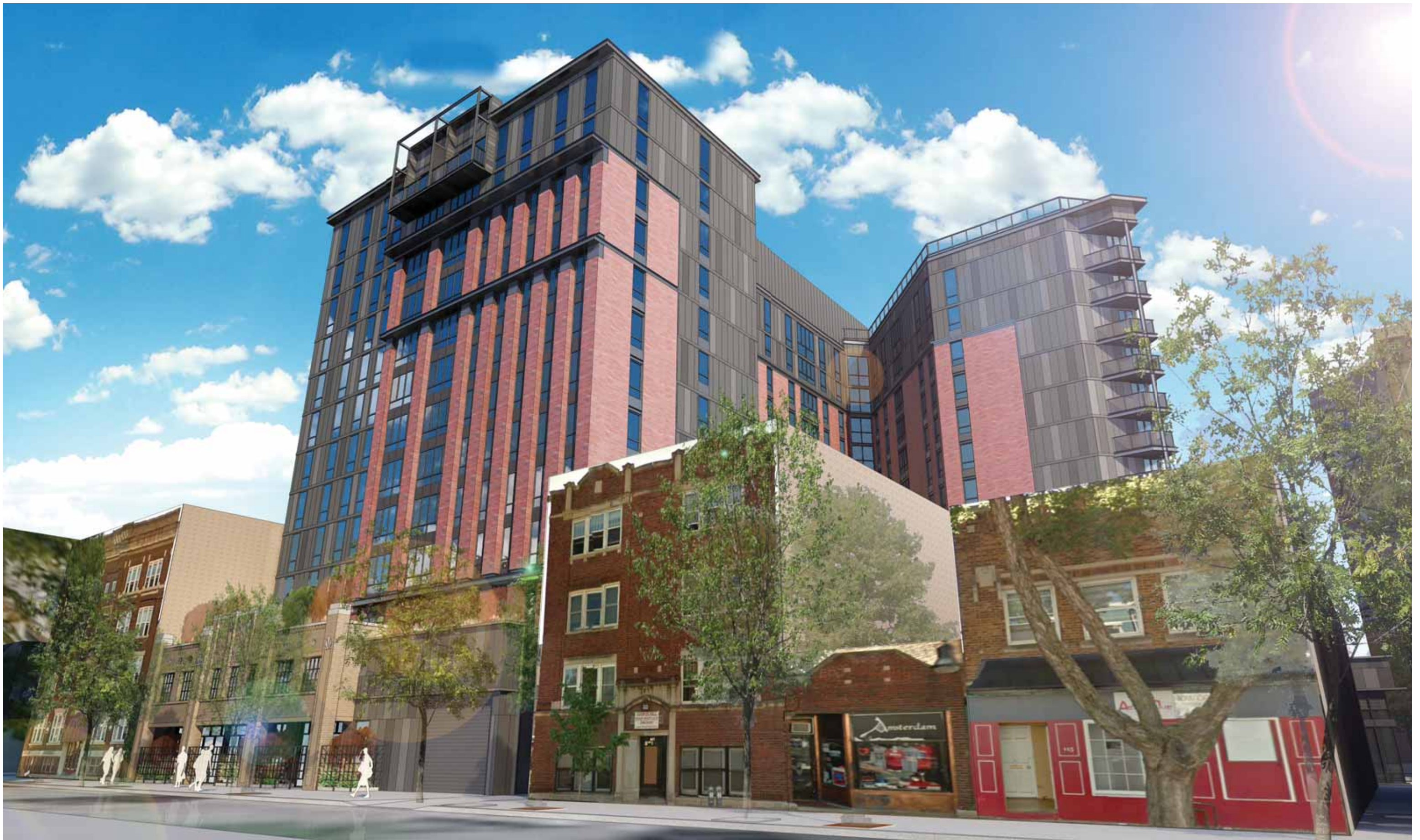


The Hub at Madison II - Revised Elevations & Perspectives Supplemental 1

Core Campus Developers | Antunovich Associates Architecture · Planning

Proposed View West on Gorham Street

Madison, Wisconsin | April 8, 2015



The Hub at Madison II - Revised Elevations & Perspectives Supplemental 1

Core Campus Developers | Antunovich Associates Architecture · Planning

Proposed View North East on Gilman Street

Madison, Wisconsin | April 8, 2015



The Hub at Madison II - Revised Elevations & Perspectives Supplemental 1

Core Campus Developers | Antunovich Associates Architecture · Planning

Proposed View at 20' Set-Back on Gilman Street

Madison, Wisconsin | April 8, 2015



The Hub at Madison II - Revised Elevations & Perspectives Supplemental 1

Core Campus Developers | Antunovich Associates Architecture · Planning

Proposed Sidewalk View on Gilman Street

Madison, Wisconsin | April 8, 2015



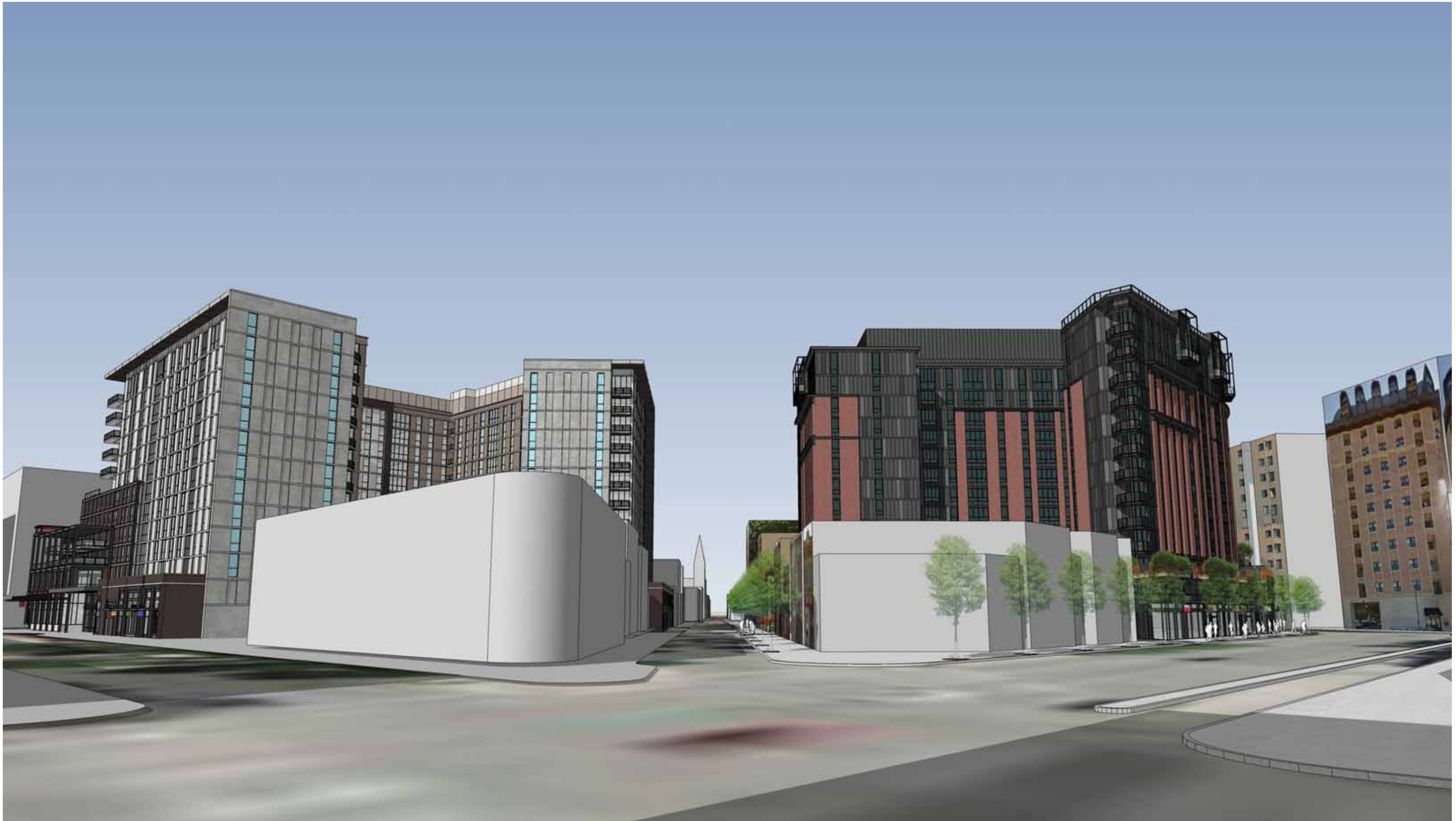


The Hub at Madison II - Revised Elevations & Perspectives Supplemental 1

Core Campus Developers | Antunovich Associates Architecture · Planning

Proposed Sidewalk View on Gorham St

Madison, Wisconsin | April 8, 2015



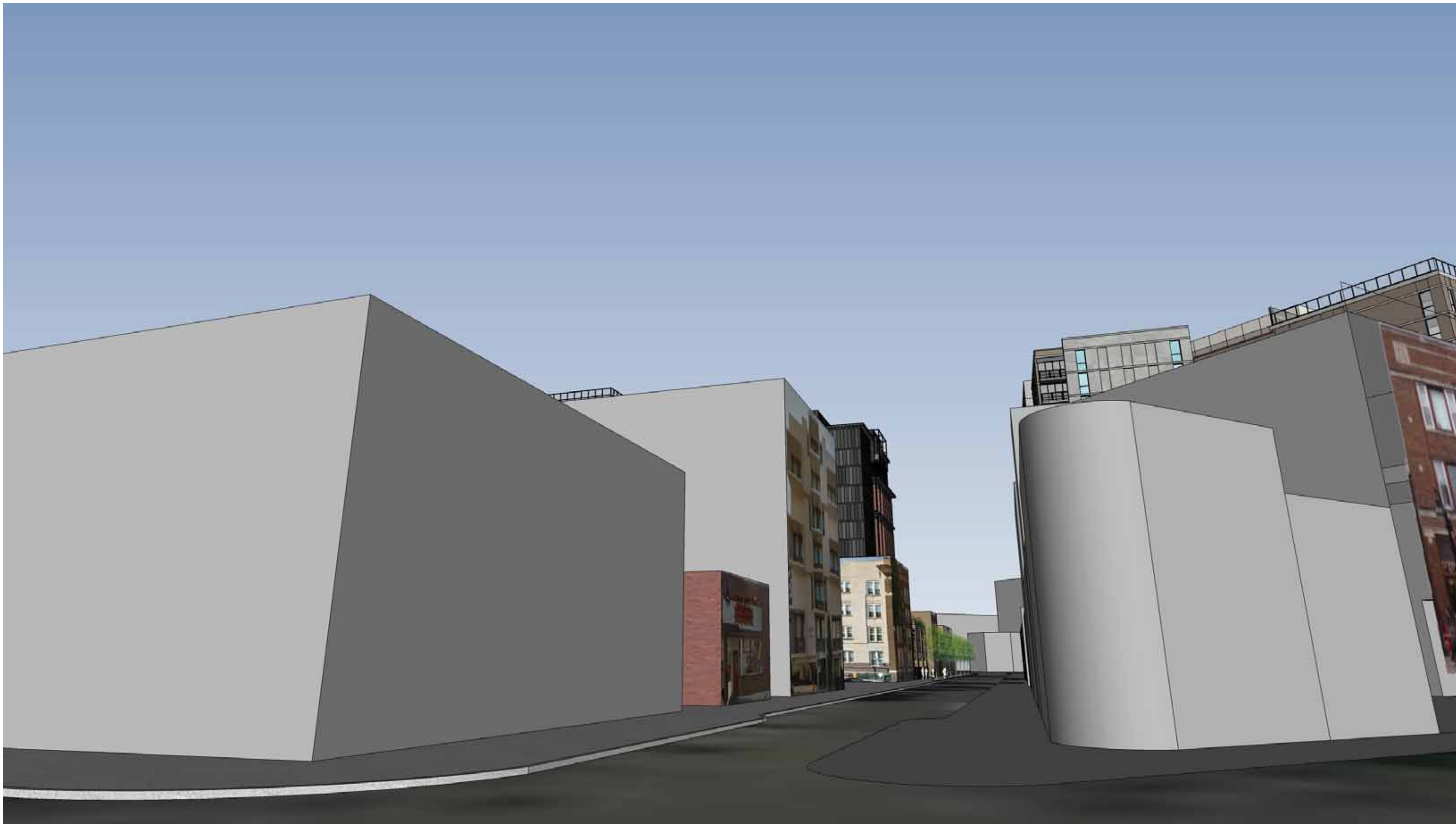
The Hub at Madison II - Revised Elevations & Perspectives Supplemental 1

Core Campus Developers | Antunovich Associates Architecture · Planning

Proposed Context View North East From University Ave

Madison, Wisconsin | April 8, 2015





The Hub at Madison II - Revised Elevations & Perspectives Supplemental 1

Core Campus Developers | Antunovich Associates Architecture · Planning

Proposed Context View South West on Gilman Street

Madison, Wisconsin | April 8, 2015