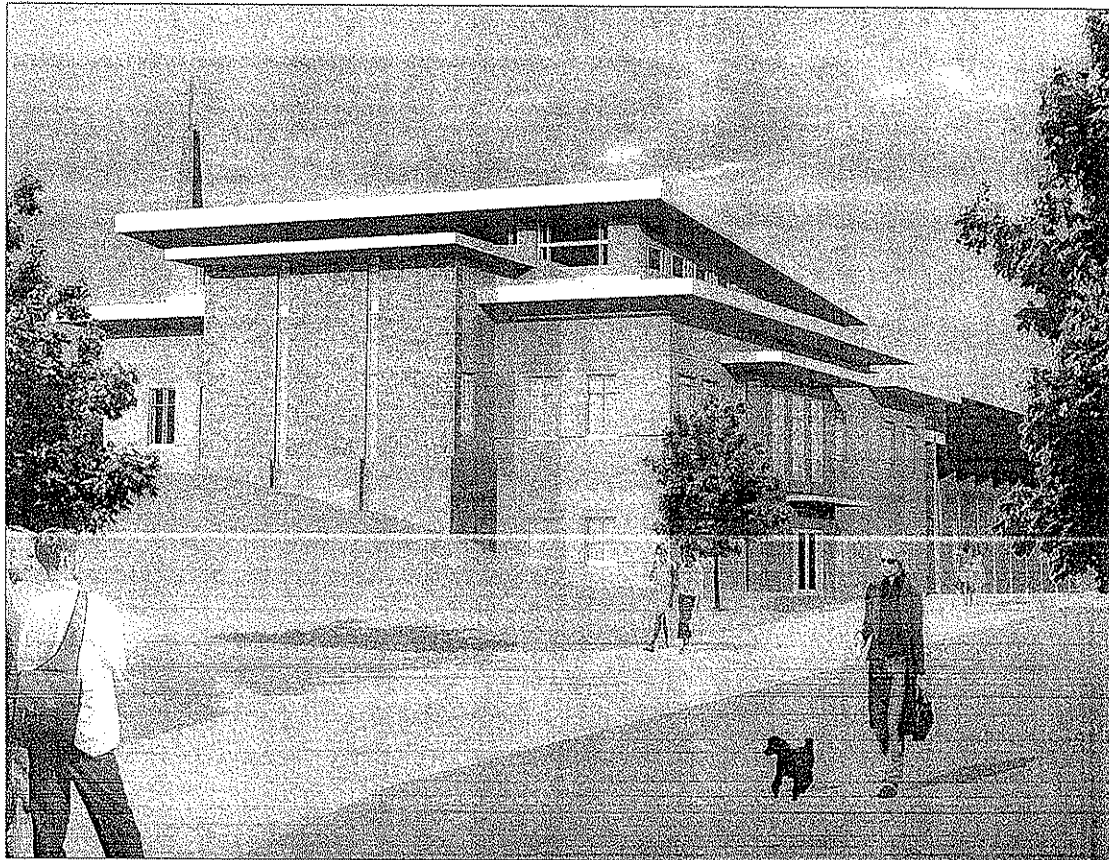


VOGEL

*We build with values,
solutions and accountability*

MESSIAH LUTHERAN CHURCH ADDITION AND RENOVATION MADISON, WI

Angus Young Architecture
Engineering
Interior Design
Balance in Creativity
515 South First Street, Suite 200, Madison, WI 53702-1475
Ph: 608.255.7376 Fax: 608.255.8161
www.angusyoung.com



SHEET INDEX

GENERAL
G001 COVER SHEET
G002 EGRESS PLAN

CIVIL

C001 SITE SURVEY BY OTHERS (FOR REFERENCE ONLY)
C002 SITE REMOVAL PLAN
C100 SITE EROSION CONTROL PLAN AND DETAILS
C200 SITE EROSION CONTROL PLAN AND DETAILS
C300 SITE EROSION CONTROL PLAN AND DETAILS
C400 SITE EROSION CONTROL PLAN AND DETAILS
C500 SITE EROSION CONTROL PLAN AND DETAILS

LANDSCAPE

L101 LANDSCAPE PLAN AND DETAILS

ARCHITECTURAL

A100 LOWER LEVEL FLOOR PLAN
A101 FIRST LEVEL FLOOR PLAN
A102 CLEARSTORY PLAN
A110 ROOF PLAN AND ROOF DETAILS

A401 EXTERIOR FINISH ELEVATIONS
A410 EXTERIOR FINISH ELEVATIONS

A501 EXTERIOR FINISH ELEVATIONS
A510 EXTERIOR FINISH ELEVATIONS

A601 EXTERIOR FINISH ELEVATIONS
A610 EXTERIOR FINISH ELEVATIONS

A701 EXTERIOR FINISH ELEVATIONS
A710 EXTERIOR FINISH ELEVATIONS

A801 EXTERIOR FINISH ELEVATIONS
A810 EXTERIOR FINISH ELEVATIONS

A901 EXTERIOR FINISH ELEVATIONS
A910 EXTERIOR FINISH ELEVATIONS

A1001 EXTERIOR FINISH ELEVATIONS
A1002 EXTERIOR FINISH ELEVATIONS

A1101 EXTERIOR FINISH ELEVATIONS
A1102 EXTERIOR FINISH ELEVATIONS

A1201 EXTERIOR FINISH ELEVATIONS
A1202 EXTERIOR FINISH ELEVATIONS

A1301 EXTERIOR FINISH ELEVATIONS
A1302 EXTERIOR FINISH ELEVATIONS

A1401 EXTERIOR FINISH ELEVATIONS
A1402 EXTERIOR FINISH ELEVATIONS

A1501 EXTERIOR FINISH ELEVATIONS
A1502 EXTERIOR FINISH ELEVATIONS

A1601 EXTERIOR FINISH ELEVATIONS
A1602 EXTERIOR FINISH ELEVATIONS

A1701 EXTERIOR FINISH ELEVATIONS
A1702 EXTERIOR FINISH ELEVATIONS

A1801 EXTERIOR FINISH ELEVATIONS
A1802 EXTERIOR FINISH ELEVATIONS

A1901 EXTERIOR FINISH ELEVATIONS
A1902 EXTERIOR FINISH ELEVATIONS

A2001 EXTERIOR FINISH ELEVATIONS
A2002 EXTERIOR FINISH ELEVATIONS

A2101 EXTERIOR FINISH ELEVATIONS
A2102 EXTERIOR FINISH ELEVATIONS

A2201 EXTERIOR FINISH ELEVATIONS
A2202 EXTERIOR FINISH ELEVATIONS

A2301 EXTERIOR FINISH ELEVATIONS
A2302 EXTERIOR FINISH ELEVATIONS

A2401 EXTERIOR FINISH ELEVATIONS
A2402 EXTERIOR FINISH ELEVATIONS

A2501 EXTERIOR FINISH ELEVATIONS
A2502 EXTERIOR FINISH ELEVATIONS

A2601 EXTERIOR FINISH ELEVATIONS
A2602 EXTERIOR FINISH ELEVATIONS

A2701 EXTERIOR FINISH ELEVATIONS
A2702 EXTERIOR FINISH ELEVATIONS

A2801 EXTERIOR FINISH ELEVATIONS
A2802 EXTERIOR FINISH ELEVATIONS

A2901 EXTERIOR FINISH ELEVATIONS
A2902 EXTERIOR FINISH ELEVATIONS

A3001 EXTERIOR FINISH ELEVATIONS
A3002 EXTERIOR FINISH ELEVATIONS

A3101 EXTERIOR FINISH ELEVATIONS
A3102 EXTERIOR FINISH ELEVATIONS

A3201 EXTERIOR FINISH ELEVATIONS
A3202 EXTERIOR FINISH ELEVATIONS

A3301 EXTERIOR FINISH ELEVATIONS
A3302 EXTERIOR FINISH ELEVATIONS

A3401 EXTERIOR FINISH ELEVATIONS
A3402 EXTERIOR FINISH ELEVATIONS

A3501 EXTERIOR FINISH ELEVATIONS
A3502 EXTERIOR FINISH ELEVATIONS

A3601 EXTERIOR FINISH ELEVATIONS
A3602 EXTERIOR FINISH ELEVATIONS

A3701 EXTERIOR FINISH ELEVATIONS
A3702 EXTERIOR FINISH ELEVATIONS

A3801 EXTERIOR FINISH ELEVATIONS
A3802 EXTERIOR FINISH ELEVATIONS

A3901 EXTERIOR FINISH ELEVATIONS
A3902 EXTERIOR FINISH ELEVATIONS

A4001 EXTERIOR FINISH ELEVATIONS
A4002 EXTERIOR FINISH ELEVATIONS

A4101 EXTERIOR FINISH ELEVATIONS
A4102 EXTERIOR FINISH ELEVATIONS

A4201 EXTERIOR FINISH ELEVATIONS
A4202 EXTERIOR FINISH ELEVATIONS

A4301 EXTERIOR FINISH ELEVATIONS
A4302 EXTERIOR FINISH ELEVATIONS

A4401 EXTERIOR FINISH ELEVATIONS
A4402 EXTERIOR FINISH ELEVATIONS

A4501 EXTERIOR FINISH ELEVATIONS
A4502 EXTERIOR FINISH ELEVATIONS

A4601 EXTERIOR FINISH ELEVATIONS
A4602 EXTERIOR FINISH ELEVATIONS

A4701 EXTERIOR FINISH ELEVATIONS
A4702 EXTERIOR FINISH ELEVATIONS

A4801 EXTERIOR FINISH ELEVATIONS
A4802 EXTERIOR FINISH ELEVATIONS

A4901 EXTERIOR FINISH ELEVATIONS
A4902 EXTERIOR FINISH ELEVATIONS

A5001 EXTERIOR FINISH ELEVATIONS
A5002 EXTERIOR FINISH ELEVATIONS

A5101 EXTERIOR FINISH ELEVATIONS
A5102 EXTERIOR FINISH ELEVATIONS

A5201 EXTERIOR FINISH ELEVATIONS
A5202 EXTERIOR FINISH ELEVATIONS

A5301 EXTERIOR FINISH ELEVATIONS
A5302 EXTERIOR FINISH ELEVATIONS

A5401 EXTERIOR FINISH ELEVATIONS
A5402 EXTERIOR FINISH ELEVATIONS

A5501 EXTERIOR FINISH ELEVATIONS
A5502 EXTERIOR FINISH ELEVATIONS

A5601 EXTERIOR FINISH ELEVATIONS
A5602 EXTERIOR FINISH ELEVATIONS

A5701 EXTERIOR FINISH ELEVATIONS
A5702 EXTERIOR FINISH ELEVATIONS

A5801 EXTERIOR FINISH ELEVATIONS
A5802 EXTERIOR FINISH ELEVATIONS

A5901 EXTERIOR FINISH ELEVATIONS
A5902 EXTERIOR FINISH ELEVATIONS

A6001 EXTERIOR FINISH ELEVATIONS
A6002 EXTERIOR FINISH ELEVATIONS

A6101 EXTERIOR FINISH ELEVATIONS
A6102 EXTERIOR FINISH ELEVATIONS

A6201 EXTERIOR FINISH ELEVATIONS
A6202 EXTERIOR FINISH ELEVATIONS

A6301 EXTERIOR FINISH ELEVATIONS
A6302 EXTERIOR FINISH ELEVATIONS

A6401 EXTERIOR FINISH ELEVATIONS
A6402 EXTERIOR FINISH ELEVATIONS

A6501 EXTERIOR FINISH ELEVATIONS
A6502 EXTERIOR FINISH ELEVATIONS

A6601 EXTERIOR FINISH ELEVATIONS
A6602 EXTERIOR FINISH ELEVATIONS

A6701 EXTERIOR FINISH ELEVATIONS
A6702 EXTERIOR FINISH ELEVATIONS

A6801 EXTERIOR FINISH ELEVATIONS
A6802 EXTERIOR FINISH ELEVATIONS

A6901 EXTERIOR FINISH ELEVATIONS
A6902 EXTERIOR FINISH ELEVATIONS

A7001 EXTERIOR FINISH ELEVATIONS
A7002 EXTERIOR FINISH ELEVATIONS

A7101 EXTERIOR FINISH ELEVATIONS
A7102 EXTERIOR FINISH ELEVATIONS

A7201 EXTERIOR FINISH ELEVATIONS
A7202 EXTERIOR FINISH ELEVATIONS

A7301 EXTERIOR FINISH ELEVATIONS
A7302 EXTERIOR FINISH ELEVATIONS

REGULATORY DATA

PROJECT ADDRESS
592 COVAGE GROVE ROAD
MADISON, WI

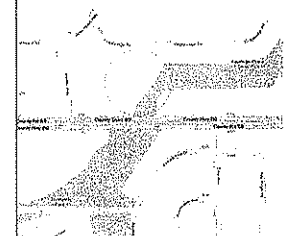
BUILDING CODE
2006 INTERNATIONAL RESIDENTIAL CODE

USE AND OCCUPANCY CLASSIFICATION
A-1
NON-SEPARATED USE

GENERAL BUILDING HEIGHT AND AREA
MAXIMUM FLOOR AREA = 12,500
MAXIMUM STOREYS = 2
MAXIMUM HEIGHT = 30

TYPE OF CONSTRUCTION
VB

LOCATION MAP



MESSIAH LUTHERAN CHURCH ADDITION AND RENOVATION MADISON, WI

PROJECT NO: 4362 DRAWN BY: JAD

REVISIONS BY: JAD

DATE: 05/05/2010

SCALE: AS SHOWN

DATE PLOTTED: 05/05/2010

PROJECT NO: 4362 DRAWN BY: JAD

REVISIONS BY: JAD

DATE: 05/05/2010

SCALE: AS SHOWN

DATE PLOTTED: 05/05/2010

G001

24	20	16	12	08	04
23	19	15	11	07	03
22	18	14	10	06	02
21	17	13	09	05	01

TITLE BLOCK

SET IN THE SET HAS PLACED
ON THE PLANS AND IN THE DRAWING
ROOMS BY THE ARCHITECT
DATE: 05/05/2010

DATE: 05/05/2010

DATE: 05/05/2010

DATE: 05/05/2010

DATE: 05/05/2010

DATE: 05/05/2010

DATE: 05/05/2010

DATE: 05/05/2010

DATE: 05/05/2010

DATE: 05/05/2010

DATE: 05/05/2010

DATE: 05/05/2010

DATE: 05/05/2010

DATE: 05/05/2010

DATE: 05/05/2010

DATE: 05/05/2010

DATE: 05/05/2010

DATE: 05/05/2010

DATE: 05/05/2010

DATE: 05/05/2010

DATE: 05/05/2010

DATE: 05/05/2010

DATE: 05/05/2010

DATE: 05/05/2010

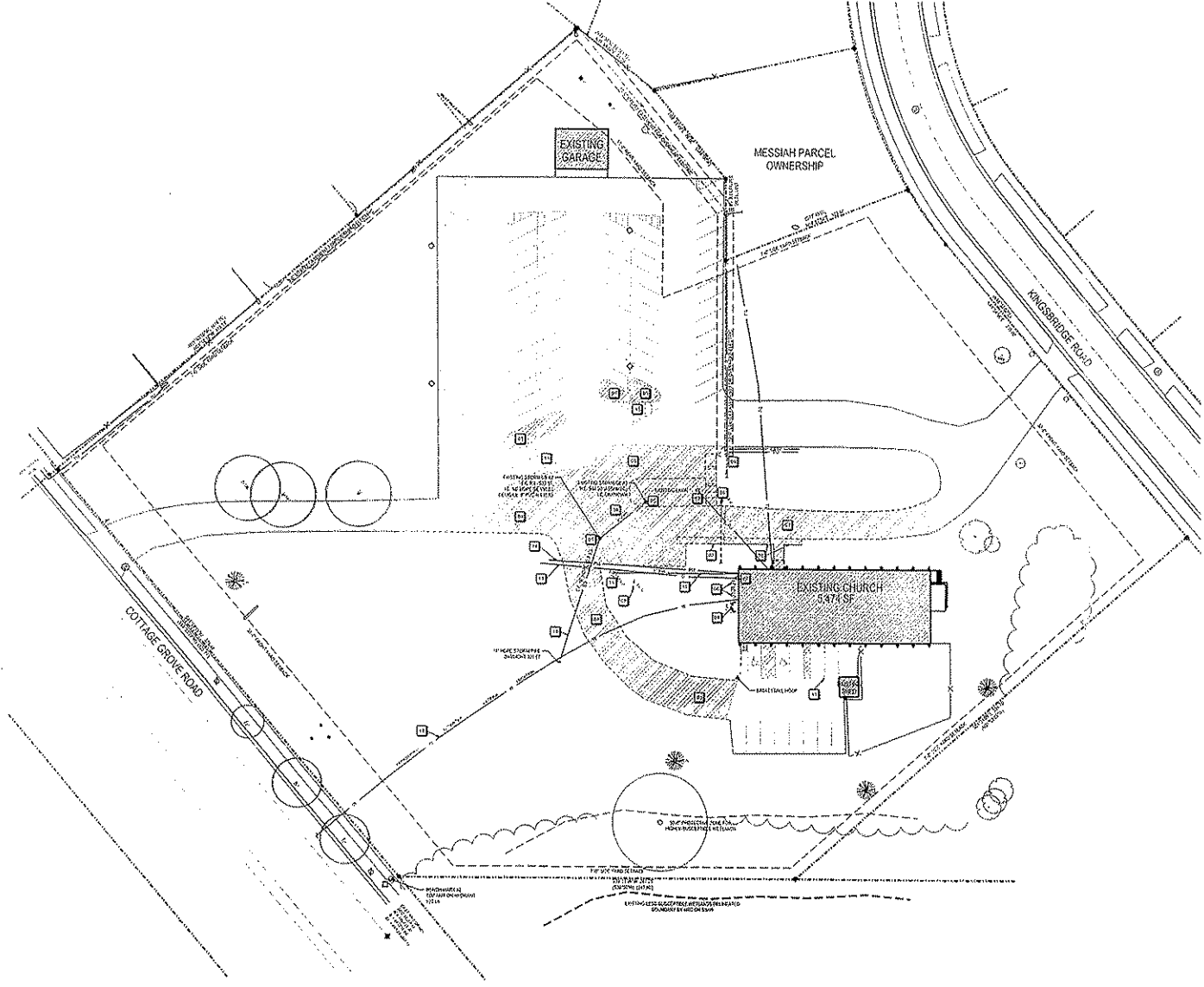
DATE: 05/05/2010

DATE: 05/05/2010

DATE: 05/05/2010

ORIGINAL SIZE 11" X 17" 1/4"

DATE: 10/27/10
 SHEET: 1001



- NOTES**
- 1 DEMOLISH AND REMOVE EXISTING AUTOMOBILE AND GARAGE AS PAVED
 - 2 REMOVE EXISTING RAILING
 - 3 REMOVE EXISTING ELECTRICAL
 - 4 REMOVE EXISTING POWER POLE AND RUN WIRE CABLES TO BE REPAIRED - EXISTING HOOD PROOFED REFRIGERATOR
 - 5 REMOVE EXISTING GARBAGE BIN AND OUTLET
 - 6 REMOVE EXISTING CEILING LIGHTS - SEE SITE LAYOUT PLAN FOR LOCATION
 - 7 REMOVE EXISTING GAS METERS
 - 8 REMOVE EXISTING BRASS NELL
 - 9 RELOCATE EXISTING SOIL CONDITIONER WITH OWNER'S NEW LOCATION
 - 10 REMOVE EXISTING STUMP
 - 11 REMOVE EXISTING STUMP
 - 12 REMOVE EXISTING 4" X 8" POSTS IN DRIVEWAY, SET NEW WITH NEW PAVERS TO MATCH EXISTING
 - 13 REMOVE A PORTION OF 2" X 6" EXTERIOR AND GUT EAVES
 - 14 REMOVE A PORTION OF EXISTING ROOF POWER TO USE AS IS, NEW ROOF TO INTERPRET, SEE SITE LAYOUT PLAN
 - 15 REMOVE A PORTION OF EXISTING EXTERIOR AND EXTERIOR BASKETBALL GARAGE

DIGGERS HOTLINE

CALL TOLL FREE 1-800-242-8511
 MILWAUKEE AREA 414-250-1181
 FAX A LOCATE 1-800-338-3860
 TDD (HEARING IMPAIRED) 1-800-542-2289
 ONLINE: www.DiggersHotline.com

DESIGNER	ANGUS YOUNG
CLIENT	MESSIAH LUTHERAN CHURCH
DATE	10/27/10
PROJECT	1001

Angus Young
 Architecture
 Engineering
 Interior Design

1515 North Lincoln Avenue, Suite 310
 Waukegan, IL 60087
 www.angusyoung.com

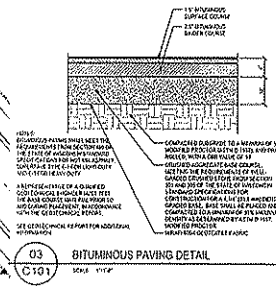
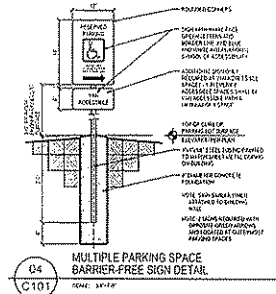
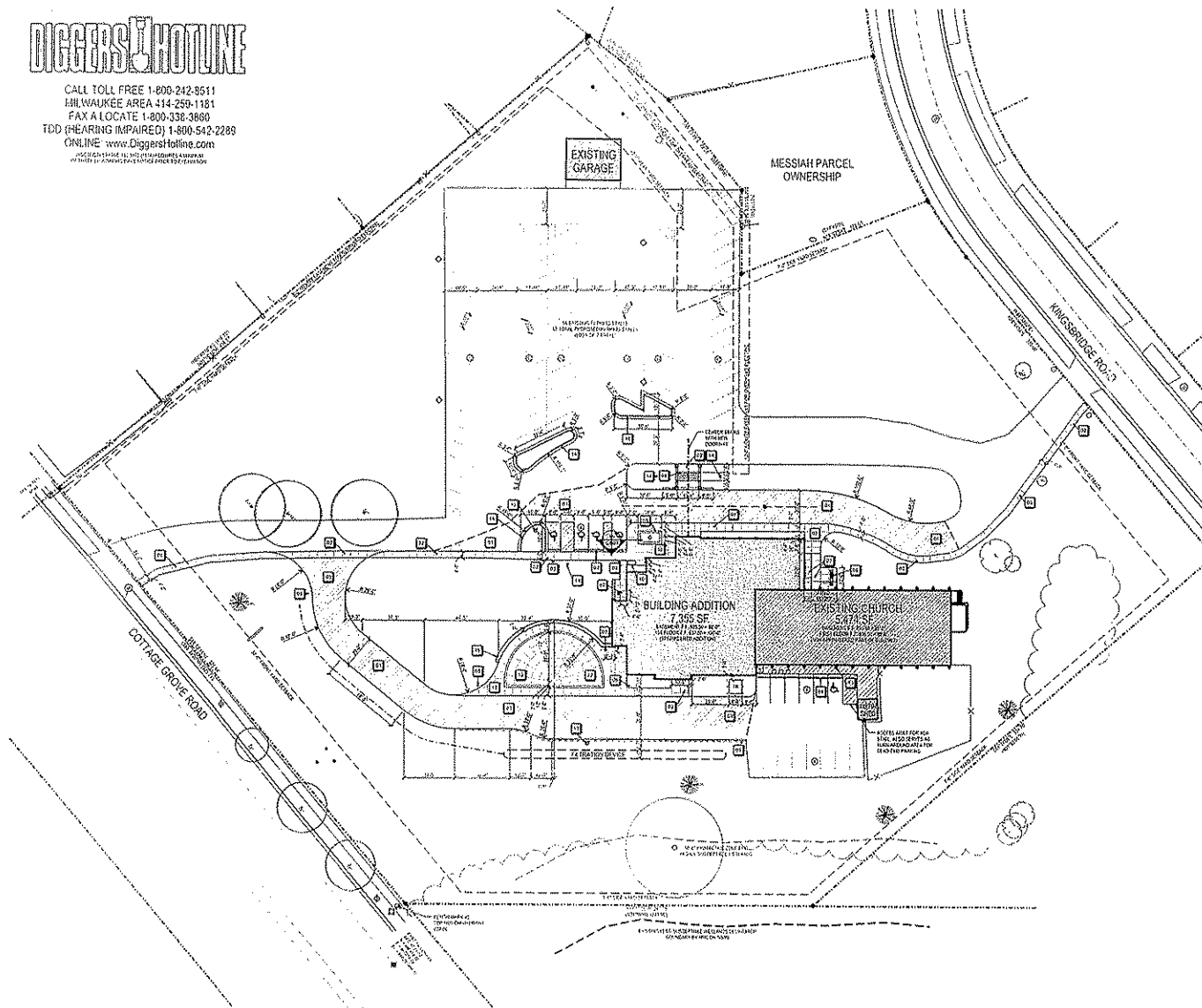
VOGEL
 We build with values.
 solutions and accountability

MESSIAH LUTHERAN CHURCH
 ADDITION AND RENOVATION
 MESSIAH LUTHERAN CHURCH
 MADISON, WI

PROJECT NUMBER	1001
APPROVED BY	ANGUS YOUNG
DATE	10/27/10
SCALE	AS SHOWN
DESIGNED BY	ANGUS YOUNG

1001 SITE DEMOLITION PLAN

C002



- KEYNOTES**
1. SEE GENERAL NOTES FOR MATERIALS AND FINISHES.
 2. SEE GENERAL NOTES FOR CONSTRUCTION METHODS AND SEQUENCING.
 3. SEE GENERAL NOTES FOR DIMENSIONS AND TOLERANCES.
 4. SEE GENERAL NOTES FOR EROSION CONTROL AND SLOPE STABILIZATION.
 5. SEE GENERAL NOTES FOR TREE PROTECTION AND LANDSCAPING.
 6. SEE GENERAL NOTES FOR SIGNAGE AND MARKING.
 7. SEE GENERAL NOTES FOR LIGHTING AND ELECTRICAL.
 8. SEE GENERAL NOTES FOR ACCESSIBILITY AND BARRIER-FREE DESIGN.
 9. SEE GENERAL NOTES FOR WEATHERING AND DURABILITY.
 10. SEE GENERAL NOTES FOR FINISHES AND COORDINATION.

GENERAL NOTES

1. ALL WORK SHALL BE IN ACCORDANCE WITH THE LATEST EDITIONS OF THE INTERNATIONAL BUILDING CODE (IBC) AND THE NATIONAL FIRE PROTECTION ASSOCIATION (NFPA) CODES.
2. THE CONTRACTOR SHALL BE RESPONSIBLE FOR OBTAINING ALL NECESSARY PERMITS AND APPROVALS FROM THE LOCAL AUTHORITIES.
3. THE CONTRACTOR SHALL MAINTAIN ACCESS TO ALL ADJACENT PROPERTIES AND UTILITIES AT ALL TIMES.
4. THE CONTRACTOR SHALL PROTECT ALL EXISTING UTILITIES AND STRUCTURES TO REMAIN.
5. THE CONTRACTOR SHALL MAINTAIN ADEQUATE RECORD DRAWINGS AND AS-BUILT DRAWINGS.
6. THE CONTRACTOR SHALL BE RESPONSIBLE FOR THE PROTECTION AND MAINTENANCE OF ALL EXISTING TREES AND LANDSCAPING.
7. THE CONTRACTOR SHALL MAINTAIN ADEQUATE RECORD DRAWINGS AND AS-BUILT DRAWINGS.
8. THE CONTRACTOR SHALL BE RESPONSIBLE FOR THE PROTECTION AND MAINTENANCE OF ALL EXISTING UTILITIES AND STRUCTURES TO REMAIN.
9. THE CONTRACTOR SHALL MAINTAIN ADEQUATE RECORD DRAWINGS AND AS-BUILT DRAWINGS.
10. THE CONTRACTOR SHALL BE RESPONSIBLE FOR THE PROTECTION AND MAINTENANCE OF ALL EXISTING TREES AND LANDSCAPING.

PROJECT NUMBER	10000
DATE	11/13/2014
SCALE	AS SHOWN
DRAWN BY	JD
CHECKED BY	JD
DATE	11/13/2014
PROJECT LOCATION	MADISON, WI
CLIENT	MESSIAH LUTHERAN CHURCH
DESIGNER	ANGUS YOUNG ARCHITECTURE
SCALE	AS SHOWN
DATE	11/13/2014
PROJECT NUMBER	10000

ANGUS YOUNG
 Architecture
 Engineering
 Interior Design

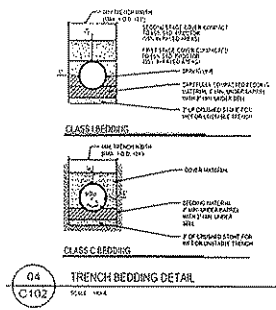
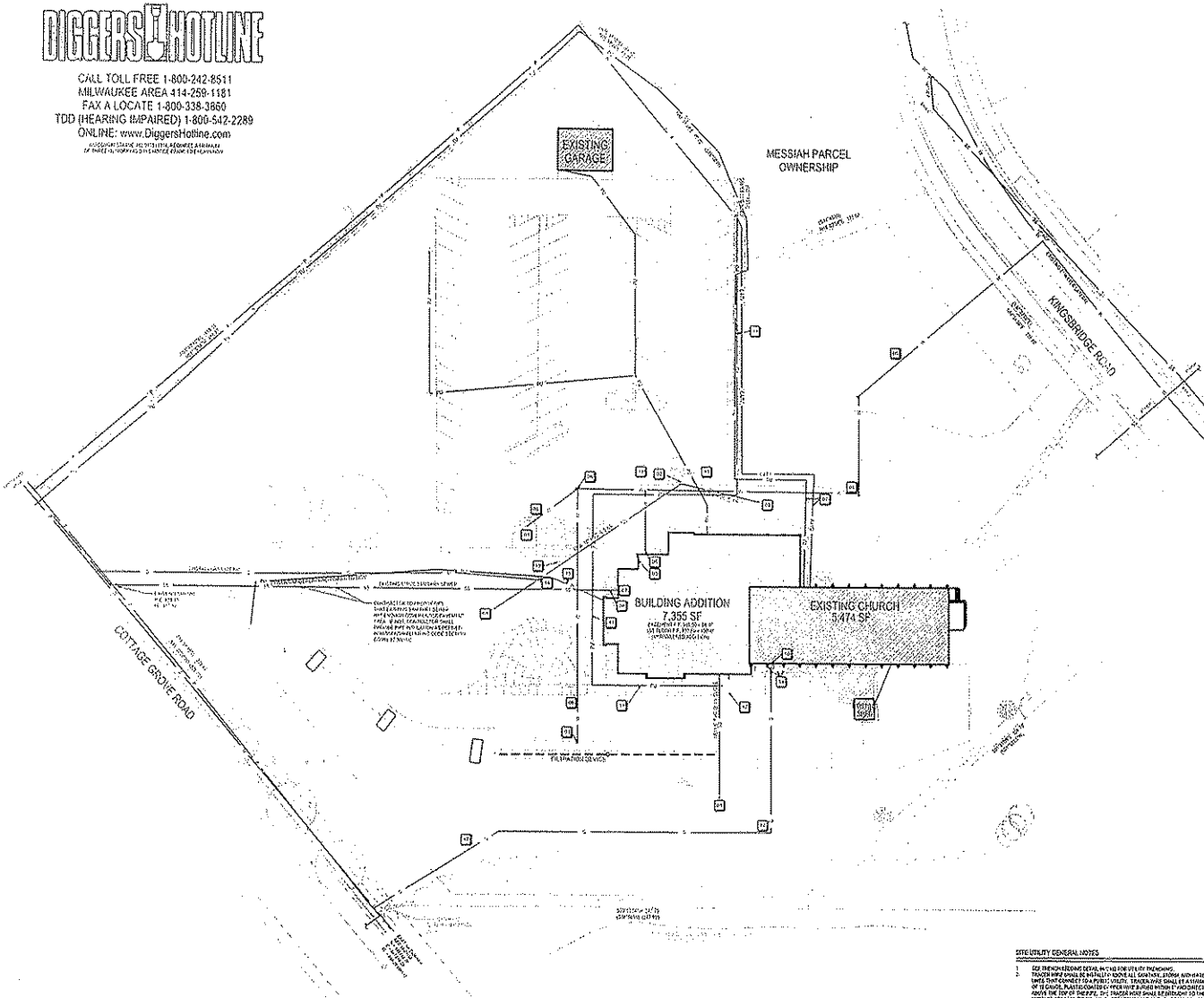
1000 N. MILWAUKEE AVENUE
 SUITE 100
 MILWAUKEE, WI 53233
 TEL: 414-250-1181
 FAX: 414-250-1182
 WWW.ANGUSYOUNG.COM

VOGEL
 We build with values.
 solutions and accountability

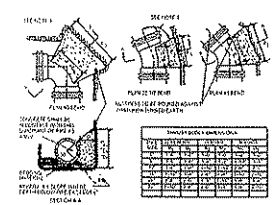
MESSIAH LUTHERAN CHURCH
 ADDITION AND RENOVATION
 MESSIAH LUTHERAN CHURCH
 MADISON, WI

PROJECT NUMBER: 10000
 DATE: 11/13/2014
 SCALE: AS SHOWN
 DRAWN BY: JD
 CHECKED BY: JD
 DATE: 11/13/2014
 PROJECT LOCATION: MADISON, WI
 CLIENT: MESSIAH LUTHERAN CHURCH
 DESIGNER: ANGUS YOUNG ARCHITECTURE

SITE LAYOUT PLAN AND DETAILS
C101



04 TRENCH BEDDING DETAIL
 SCALE: 1/4" = 1'-0"



02 THRUST BLOCKING FOR BENDS
 1/4" = 1'-0"

- SITE UTILITY GENERAL NOTES**
- SEE THE INSTRUMENT DETAIL FOR THE TYPE OF PIPING.
 - TRENCH DEPTH SHALL BE MINIMUM 18" FOR ALL UTILITIES UNLESS OTHERWISE NOTED.
 - ALL UTILITIES SHALL BE INSTALLED TO THE DEPTH AND LOCATION SHOWN ON THIS PLAN.
 - ALL UTILITIES SHALL BE INSTALLED TO THE DEPTH AND LOCATION SHOWN ON THIS PLAN.
 - ALL UTILITIES SHALL BE INSTALLED TO THE DEPTH AND LOCATION SHOWN ON THIS PLAN.
 - ALL UTILITIES SHALL BE INSTALLED TO THE DEPTH AND LOCATION SHOWN ON THIS PLAN.
 - ALL UTILITIES SHALL BE INSTALLED TO THE DEPTH AND LOCATION SHOWN ON THIS PLAN.
 - ALL UTILITIES SHALL BE INSTALLED TO THE DEPTH AND LOCATION SHOWN ON THIS PLAN.
 - ALL UTILITIES SHALL BE INSTALLED TO THE DEPTH AND LOCATION SHOWN ON THIS PLAN.
 - ALL UTILITIES SHALL BE INSTALLED TO THE DEPTH AND LOCATION SHOWN ON THIS PLAN.

- REVISIONS**
- | NO. | DESCRIPTION |
|-----|---|
| 01 | ISSUED FOR PERMIT |
| 02 | REVISIONS FOR COMMENTS FROM THE CITY OF MILWAUKEE |
| 03 | REVISIONS FOR COMMENTS FROM THE CITY OF MILWAUKEE |
| 04 | REVISIONS FOR COMMENTS FROM THE CITY OF MILWAUKEE |
| 05 | REVISIONS FOR COMMENTS FROM THE CITY OF MILWAUKEE |
| 06 | REVISIONS FOR COMMENTS FROM THE CITY OF MILWAUKEE |
| 07 | REVISIONS FOR COMMENTS FROM THE CITY OF MILWAUKEE |
| 08 | REVISIONS FOR COMMENTS FROM THE CITY OF MILWAUKEE |
| 09 | REVISIONS FOR COMMENTS FROM THE CITY OF MILWAUKEE |
| 10 | REVISIONS FOR COMMENTS FROM THE CITY OF MILWAUKEE |
| 11 | REVISIONS FOR COMMENTS FROM THE CITY OF MILWAUKEE |
| 12 | REVISIONS FOR COMMENTS FROM THE CITY OF MILWAUKEE |
| 13 | REVISIONS FOR COMMENTS FROM THE CITY OF MILWAUKEE |
| 14 | REVISIONS FOR COMMENTS FROM THE CITY OF MILWAUKEE |
| 15 | REVISIONS FOR COMMENTS FROM THE CITY OF MILWAUKEE |
| 16 | REVISIONS FOR COMMENTS FROM THE CITY OF MILWAUKEE |
| 17 | REVISIONS FOR COMMENTS FROM THE CITY OF MILWAUKEE |
| 18 | REVISIONS FOR COMMENTS FROM THE CITY OF MILWAUKEE |
| 19 | REVISIONS FOR COMMENTS FROM THE CITY OF MILWAUKEE |
| 20 | REVISIONS FOR COMMENTS FROM THE CITY OF MILWAUKEE |
| 21 | REVISIONS FOR COMMENTS FROM THE CITY OF MILWAUKEE |
| 22 | REVISIONS FOR COMMENTS FROM THE CITY OF MILWAUKEE |
| 23 | REVISIONS FOR COMMENTS FROM THE CITY OF MILWAUKEE |
| 24 | REVISIONS FOR COMMENTS FROM THE CITY OF MILWAUKEE |
| 25 | REVISIONS FOR COMMENTS FROM THE CITY OF MILWAUKEE |
| 26 | REVISIONS FOR COMMENTS FROM THE CITY OF MILWAUKEE |
| 27 | REVISIONS FOR COMMENTS FROM THE CITY OF MILWAUKEE |
| 28 | REVISIONS FOR COMMENTS FROM THE CITY OF MILWAUKEE |
| 29 | REVISIONS FOR COMMENTS FROM THE CITY OF MILWAUKEE |
| 30 | REVISIONS FOR COMMENTS FROM THE CITY OF MILWAUKEE |
| 31 | REVISIONS FOR COMMENTS FROM THE CITY OF MILWAUKEE |
| 32 | REVISIONS FOR COMMENTS FROM THE CITY OF MILWAUKEE |
| 33 | REVISIONS FOR COMMENTS FROM THE CITY OF MILWAUKEE |
| 34 | REVISIONS FOR COMMENTS FROM THE CITY OF MILWAUKEE |
| 35 | REVISIONS FOR COMMENTS FROM THE CITY OF MILWAUKEE |
| 36 | REVISIONS FOR COMMENTS FROM THE CITY OF MILWAUKEE |
| 37 | REVISIONS FOR COMMENTS FROM THE CITY OF MILWAUKEE |
| 38 | REVISIONS FOR COMMENTS FROM THE CITY OF MILWAUKEE |
| 39 | REVISIONS FOR COMMENTS FROM THE CITY OF MILWAUKEE |
| 40 | REVISIONS FOR COMMENTS FROM THE CITY OF MILWAUKEE |
| 41 | REVISIONS FOR COMMENTS FROM THE CITY OF MILWAUKEE |
| 42 | REVISIONS FOR COMMENTS FROM THE CITY OF MILWAUKEE |
| 43 | REVISIONS FOR COMMENTS FROM THE CITY OF MILWAUKEE |
| 44 | REVISIONS FOR COMMENTS FROM THE CITY OF MILWAUKEE |
| 45 | REVISIONS FOR COMMENTS FROM THE CITY OF MILWAUKEE |
| 46 | REVISIONS FOR COMMENTS FROM THE CITY OF MILWAUKEE |
| 47 | REVISIONS FOR COMMENTS FROM THE CITY OF MILWAUKEE |
| 48 | REVISIONS FOR COMMENTS FROM THE CITY OF MILWAUKEE |
| 49 | REVISIONS FOR COMMENTS FROM THE CITY OF MILWAUKEE |
| 50 | REVISIONS FOR COMMENTS FROM THE CITY OF MILWAUKEE |
| 51 | REVISIONS FOR COMMENTS FROM THE CITY OF MILWAUKEE |
| 52 | REVISIONS FOR COMMENTS FROM THE CITY OF MILWAUKEE |
| 53 | REVISIONS FOR COMMENTS FROM THE CITY OF MILWAUKEE |
| 54 | REVISIONS FOR COMMENTS FROM THE CITY OF MILWAUKEE |
| 55 | REVISIONS FOR COMMENTS FROM THE CITY OF MILWAUKEE |
| 56 | REVISIONS FOR COMMENTS FROM THE CITY OF MILWAUKEE |
| 57 | REVISIONS FOR COMMENTS FROM THE CITY OF MILWAUKEE |
| 58 | REVISIONS FOR COMMENTS FROM THE CITY OF MILWAUKEE |
| 59 | REVISIONS FOR COMMENTS FROM THE CITY OF MILWAUKEE |
| 60 | REVISIONS FOR COMMENTS FROM THE CITY OF MILWAUKEE |
| 61 | REVISIONS FOR COMMENTS FROM THE CITY OF MILWAUKEE |
| 62 | REVISIONS FOR COMMENTS FROM THE CITY OF MILWAUKEE |
| 63 | REVISIONS FOR COMMENTS FROM THE CITY OF MILWAUKEE |
| 64 | REVISIONS FOR COMMENTS FROM THE CITY OF MILWAUKEE |
| 65 | REVISIONS FOR COMMENTS FROM THE CITY OF MILWAUKEE |
| 66 | REVISIONS FOR COMMENTS FROM THE CITY OF MILWAUKEE |
| 67 | REVISIONS FOR COMMENTS FROM THE CITY OF MILWAUKEE |
| 68 | REVISIONS FOR COMMENTS FROM THE CITY OF MILWAUKEE |
| 69 | REVISIONS FOR COMMENTS FROM THE CITY OF MILWAUKEE |
| 70 | REVISIONS FOR COMMENTS FROM THE CITY OF MILWAUKEE |
| 71 | REVISIONS FOR COMMENTS FROM THE CITY OF MILWAUKEE |
| 72 | REVISIONS FOR COMMENTS FROM THE CITY OF MILWAUKEE |
| 73 | REVISIONS FOR COMMENTS FROM THE CITY OF MILWAUKEE |
| 74 | REVISIONS FOR COMMENTS FROM THE CITY OF MILWAUKEE |
| 75 | REVISIONS FOR COMMENTS FROM THE CITY OF MILWAUKEE |
| 76 | REVISIONS FOR COMMENTS FROM THE CITY OF MILWAUKEE |
| 77 | REVISIONS FOR COMMENTS FROM THE CITY OF MILWAUKEE |
| 78 | REVISIONS FOR COMMENTS FROM THE CITY OF MILWAUKEE |
| 79 | REVISIONS FOR COMMENTS FROM THE CITY OF MILWAUKEE |
| 80 | REVISIONS FOR COMMENTS FROM THE CITY OF MILWAUKEE |
| 81 | REVISIONS FOR COMMENTS FROM THE CITY OF MILWAUKEE |
| 82 | REVISIONS FOR COMMENTS FROM THE CITY OF MILWAUKEE |
| 83 | REVISIONS FOR COMMENTS FROM THE CITY OF MILWAUKEE |
| 84 | REVISIONS FOR COMMENTS FROM THE CITY OF MILWAUKEE |
| 85 | REVISIONS FOR COMMENTS FROM THE CITY OF MILWAUKEE |
| 86 | REVISIONS FOR COMMENTS FROM THE CITY OF MILWAUKEE |
| 87 | REVISIONS FOR COMMENTS FROM THE CITY OF MILWAUKEE |
| 88 | REVISIONS FOR COMMENTS FROM THE CITY OF MILWAUKEE |
| 89 | REVISIONS FOR COMMENTS FROM THE CITY OF MILWAUKEE |
| 90 | REVISIONS FOR COMMENTS FROM THE CITY OF MILWAUKEE |
| 91 | REVISIONS FOR COMMENTS FROM THE CITY OF MILWAUKEE |
| 92 | REVISIONS FOR COMMENTS FROM THE CITY OF MILWAUKEE |
| 93 | REVISIONS FOR COMMENTS FROM THE CITY OF MILWAUKEE |
| 94 | REVISIONS FOR COMMENTS FROM THE CITY OF MILWAUKEE |
| 95 | REVISIONS FOR COMMENTS FROM THE CITY OF MILWAUKEE |
| 96 | REVISIONS FOR COMMENTS FROM THE CITY OF MILWAUKEE |
| 97 | REVISIONS FOR COMMENTS FROM THE CITY OF MILWAUKEE |
| 98 | REVISIONS FOR COMMENTS FROM THE CITY OF MILWAUKEE |
| 99 | REVISIONS FOR COMMENTS FROM THE CITY OF MILWAUKEE |
| 100 | REVISIONS FOR COMMENTS FROM THE CITY OF MILWAUKEE |

DATE: 08/14/2014
 TIME: 10:00 AM
 DRAWN BY: JMM
 CHECKED BY: JMM
 PROJECT NO.: 14-001
 SHEET NO.: 101

PROJECT NO. 14-001
 SHEET NO. 101
 DATE: 08/14/2014
 TIME: 10:00 AM
 DRAWN BY: JMM
 CHECKED BY: JMM

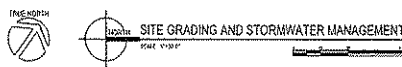
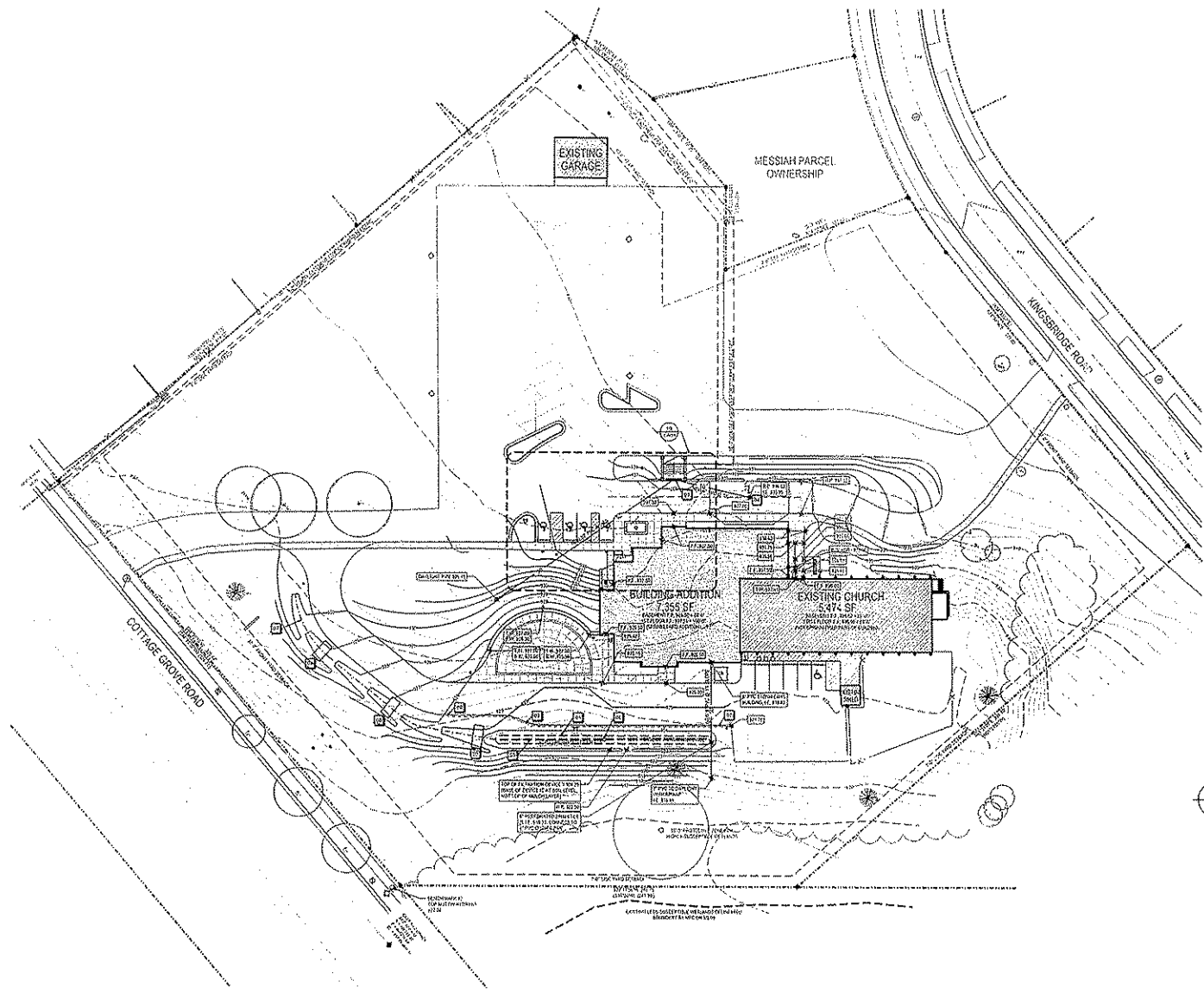
Angus Young
 Architectural
 Engineering
 Interior Design
 1000 SOUTH KENNETH AVENUE
 MILWAUKEE, WI 53214
 WWW.ANGUSYOUNG.COM

VOGEL
 We build with values.
 solutions and accountability

MESSIAH LUTHERAN CHURCH
 ADDITION AND RENOVATION
 MESSIAH LUTHERAN CHURCH
 MADISON, WI

PROJECT NO. 14-001
 SHEET NO. 101
 DATE: 08/14/2014
 TIME: 10:00 AM
 DRAWN BY: JMM
 CHECKED BY: JMM

DATE: 05/14/2014
 DRAWN BY: J. YOUNG
 CHECKED BY: J. YOUNG
 PROJECT NO.: 14-001



DIGGERS HOTLINE

CALL TOLL FREE 1-800-242-8511
 MILWAUKEE AREA 414-258-1181
 FAX A LOCATE 1-800-338-3860
 TOD (HEARING IMPAIRED) 1-800-542-2289
 ONLINE: www.DiggersHotline.com

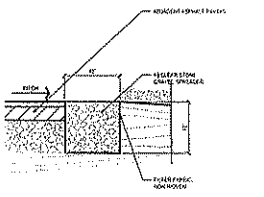
POST-CONSTRUCTION STORMWATER MANAGEMENT REGULATIONS

UDC CODES 68.10 (Revisions) OR 68.13 (when obtaining a plan or minor
 This rule is required to meet the MS 15.12 This Department's Compliance for
 the Development and Management.

Total Impervious Surface
 For a development, the MS 15.12 requires that 100% of the
 average annual runoff, as compared to the "pre-construction"
 condition.

Peak Discharge
 Example: This is a residential development with 1.5
 An agreement with the City of Madison requires that the
 peak discharge peak discharge rate be no greater than
 the pre-construction peak discharge rate.

GRADING AND SETBACK NOTES
 1. All existing areas shall be graded and maintained as
 existing grading schemes.
 2. All proposed areas are to be graded. Grading shall not
 create any erosion or sedimentation. Grading shall be
 completed by the design professional prior to construction.
 3. Within 10 days after installation of filtration device and final
 stabilization of the site, the General Contractor shall notify the
 design professional that the site is ready for water
 certification. The General Contractor shall provide as-built
 drawings for the design professional to review.



02 GRAVEL LEVEL SPREADER

18" x 18" x 18"

- 1. 18" x 18" x 18" GRAVEL
- 2. 18" x 18" x 18" GRAVEL
- 3. 18" x 18" x 18" GRAVEL
- 4. 18" x 18" x 18" GRAVEL
- 5. 18" x 18" x 18" GRAVEL
- 6. 18" x 18" x 18" GRAVEL
- 7. 18" x 18" x 18" GRAVEL
- 8. 18" x 18" x 18" GRAVEL
- 9. 18" x 18" x 18" GRAVEL
- 10. 18" x 18" x 18" GRAVEL

GRADING NOTES

1. ALL EXISTING AREAS SHALL BE GRADDED TO ORIGINAL GRADE OR GREATER SHALL BE GRADDED TO ORIGINAL GRADE OR GREATER.
2. ALL PROPOSED AREAS SHALL BE GRADDED TO ORIGINAL GRADE OR GREATER SHALL BE GRADDED TO ORIGINAL GRADE OR GREATER.

PROJECT NO.	14-001
DATE	05/14/2014
PROJECT NAME	MESSIAH LUTHERAN CHURCH ADDITION AND RENOVATION
PROJECT LOCATION	MADISON, WI
PROJECT OWNER	MESSIAH LUTHERAN CHURCH
PROJECT ARCHITECT	ANGUS YOUNG ARCHITECTURE
PROJECT ENGINEER	ANGUS YOUNG ARCHITECTURE
PROJECT SURVEYOR	ANGUS YOUNG ARCHITECTURE
PROJECT CONSULTANT	ANGUS YOUNG ARCHITECTURE

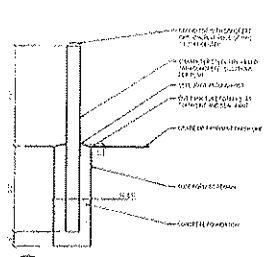
ANGUS YOUNG ARCHITECTURE
 ARCHITECTURE
 ENGINEERING
 INTERIOR DESIGN

VOGEL
 WE BUILD WITH INTEGRITY
 solutions and accountability

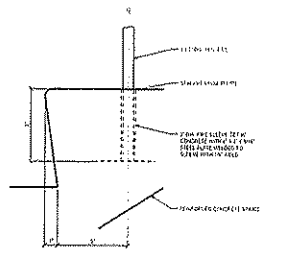
MESSIAH LUTHERAN CHURCH
 ADDITION AND RENOVATION
 MESSIAH LUTHERAN CHURCH
 MADISON, WI

PROJECT NUMBER: 14-001
 APPROVED BY: J. YOUNG
 DATE: 05/14/2014
 PROJECT LOCATION: MADISON, WI
 PROJECT OWNER: MESSIAH LUTHERAN CHURCH
 PROJECT ARCHITECT: ANGUS YOUNG ARCHITECTURE
 PROJECT ENGINEER: ANGUS YOUNG ARCHITECTURE
 PROJECT SURVEYOR: ANGUS YOUNG ARCHITECTURE
 PROJECT CONSULTANT: ANGUS YOUNG ARCHITECTURE

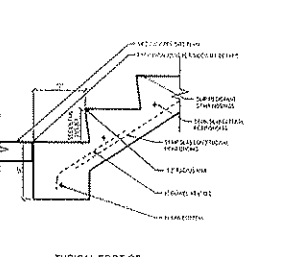
C201



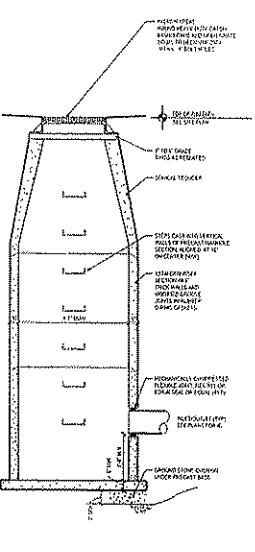
24 TYPICAL EXTERIOR BOLLARD
SCALE: 1/4" = 1'-0"



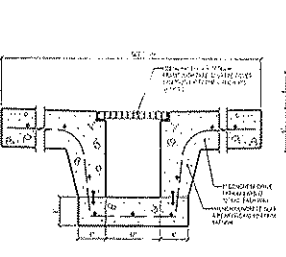
20 STAIR RAIL ANCHOR DETAIL
SCALE: 3/8" = 1'-0"



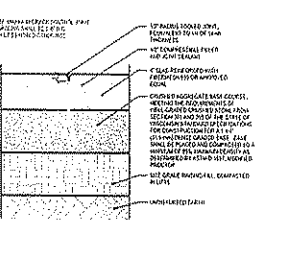
16 TYPICAL FOOT OF CONCRETE STAIR SECTION DETAIL
SCALE: 3/8" = 1'-0"



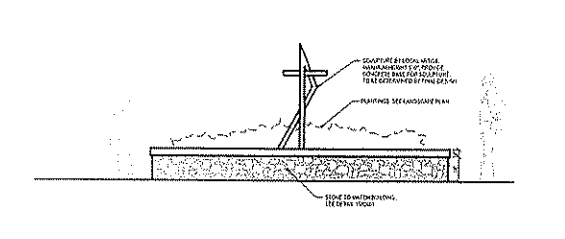
11 STORM WATER CATCH BASIN
SCALE: 3/8" = 1'-0"



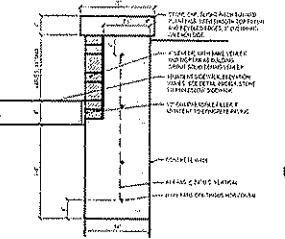
08 TRENCH DRAIN SECTION
SCALE: 3/8" = 1'-0"



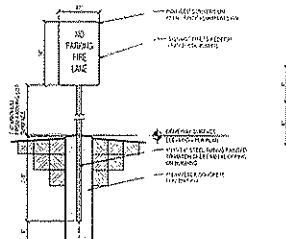
04 SIDEWALK CRACK CONTROL JOINT DETAIL (CCJ)
SCALE: 1/2" = 1'-0"



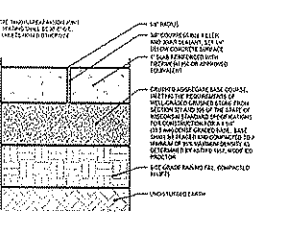
23 ELEVATION OF PLANTER
SCALE: 1/4" = 1'-0"



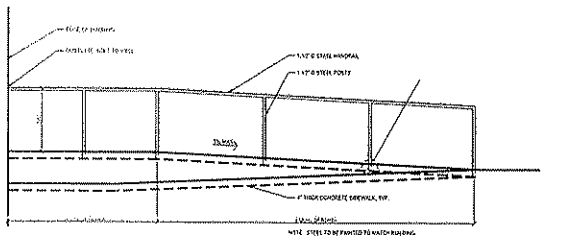
15 PLANTER WALL SECTION
SCALE: 1/4" = 1'-0"



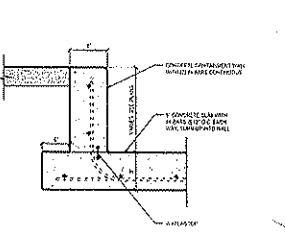
07 FIRE LANE SIGN DL TAIL
SCALE: 1/4" = 1'-0"



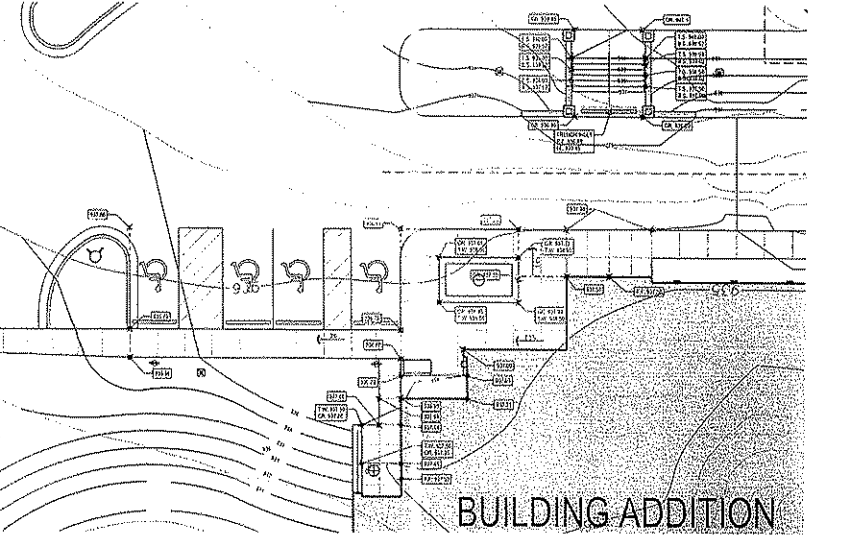
03 SIDEWALK EXPANSION JOINT DETAIL (EJ)
SCALE: 1/2" = 1'-0"



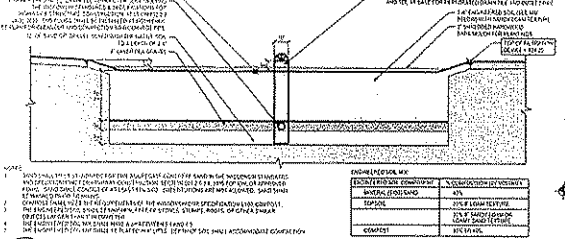
22 STEEL HANDRAIL SECTION
SCALE: 1/4" = 1'-0"



14 CONTAINMENT WALL SECTION
SCALE: 1/4" = 1'-0"



09 ENLARGED GRADING PLAN
SCALE: 1/8" = 1'-0"



21 FILTRATION DEVICE SECTION
SCALE: 1/4" = 1'-0"

NO.	DESCRIPTION	DATE
1	ISSUED FOR PERMIT	08/15/2018
2	ISSUED FOR CONSTRUCTION	09/15/2018
3	ISSUED FOR AS-BUILT	10/15/2018
4	ISSUED FOR FINAL REVIEW	11/15/2018
5	ISSUED FOR RECORD SET	12/15/2018

NO.	DATE	DESCRIPTION
1	08/15/2018	ISSUED FOR PERMIT
2	09/15/2018	ISSUED FOR CONSTRUCTION
3	10/15/2018	ISSUED FOR AS-BUILT
4	11/15/2018	ISSUED FOR FINAL REVIEW
5	12/15/2018	ISSUED FOR RECORD SET

REVISIONS

DATE: 08/15/2018

PROJECT: MESSIAH LUTHERAN CHURCH ADDITION AND RENOVATION

ARCHITECT: ANGUS YOUNG

ENGINEER: VOGEL

SCALE: 1/8" = 1'-0"

PROJECT NUMBER: 18-001

DATE: 08/15/2018

PROJECT: MESSIAH LUTHERAN CHURCH ADDITION AND RENOVATION

ARCHITECT: ANGUS YOUNG

ENGINEER: VOGEL

SCALE: 1/8" = 1'-0"

PROJECT NUMBER: 18-001

DATE: 08/15/2018

VOGEL

ARCHITECTS

ENGINEERS

INTERIOR DESIGNERS

PLANNERS

LANDSCAPE ARCHITECTS

CONSTRUCTION MANAGERS

WE BUILD WITH INTEGRITY. SOLUTIONS AND ACCOUNTABILITY.

1000 W. WASHINGTON ST. SUITE 200
MADISON, WI 53703

TEL: 608.261.1000
WWW.VOGELINC.COM

MESSIAH LUTHERAN CHURCH
ADDITION AND RENOVATION

MESSIAH LUTHERAN CHURCH
MADISON, WI

PROJECT NUMBER: 18-001

DATE: 08/15/2018

PROJECT: MESSIAH LUTHERAN CHURCH ADDITION AND RENOVATION

ARCHITECT: ANGUS YOUNG

ENGINEER: VOGEL

SCALE: 1/8" = 1'-0"

PROJECT NUMBER: 18-001

DATE: 08/15/2018

PROJECT: MESSIAH LUTHERAN CHURCH ADDITION AND RENOVATION

ARCHITECT: ANGUS YOUNG

ENGINEER: VOGEL

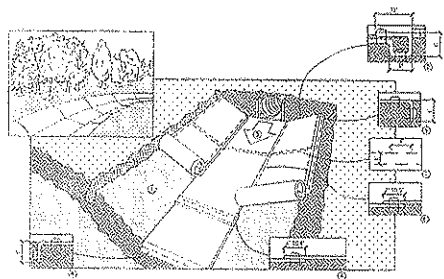
SCALE: 1/8" = 1'-0"

PROJECT NUMBER: 18-001

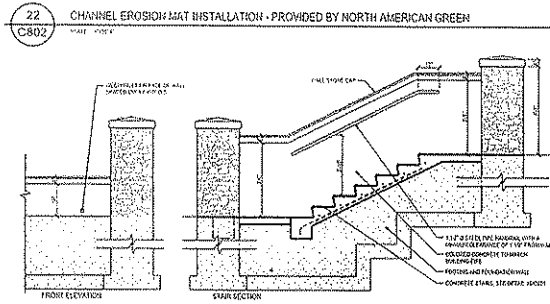
DATE: 08/15/2018

C801

SHEET NO. OF 100
 PROJECT NO. 100
 DATE 10/10/10

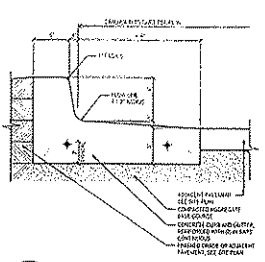


1. EROSION CONTROL MEASURES SHALL BE INSTALLED AND MAINTAINED THROUGHOUT THE CONSTRUCTION PERIOD TO PREVENT SOIL EROSION AND SILTATION.
2. EROSION CONTROL MEASURES SHALL BE DESIGNED TO PREVENT SOIL EROSION AND SILTATION FROM OCCURRING ON THE CONSTRUCTION SITE.
3. EROSION CONTROL MEASURES SHALL BE INSTALLED AND MAINTAINED THROUGHOUT THE CONSTRUCTION PERIOD TO PREVENT SOIL EROSION AND SILTATION.
4. EROSION CONTROL MEASURES SHALL BE DESIGNED TO PREVENT SOIL EROSION AND SILTATION FROM OCCURRING ON THE CONSTRUCTION SITE.
5. EROSION CONTROL MEASURES SHALL BE INSTALLED AND MAINTAINED THROUGHOUT THE CONSTRUCTION PERIOD TO PREVENT SOIL EROSION AND SILTATION.
6. EROSION CONTROL MEASURES SHALL BE DESIGNED TO PREVENT SOIL EROSION AND SILTATION FROM OCCURRING ON THE CONSTRUCTION SITE.
7. EROSION CONTROL MEASURES SHALL BE INSTALLED AND MAINTAINED THROUGHOUT THE CONSTRUCTION PERIOD TO PREVENT SOIL EROSION AND SILTATION.
8. EROSION CONTROL MEASURES SHALL BE DESIGNED TO PREVENT SOIL EROSION AND SILTATION FROM OCCURRING ON THE CONSTRUCTION SITE.
9. EROSION CONTROL MEASURES SHALL BE INSTALLED AND MAINTAINED THROUGHOUT THE CONSTRUCTION PERIOD TO PREVENT SOIL EROSION AND SILTATION.
10. EROSION CONTROL MEASURES SHALL BE DESIGNED TO PREVENT SOIL EROSION AND SILTATION FROM OCCURRING ON THE CONSTRUCTION SITE.

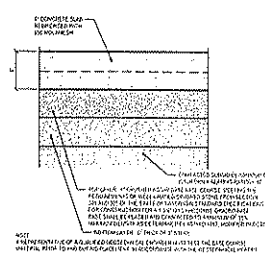


21 ENTRY STAIR SECTION
SCALE: 1/8" = 1'-0"

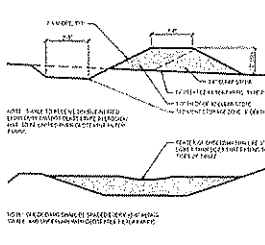
22 CHANNEL EROSION MAT INSTALLATION - PROVIDED BY NORTH AMERICAN GREEN
SCALE: 1/8" = 1'-0"



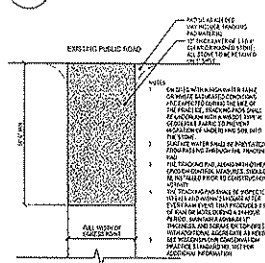
16 REJECT CURB AND GUTTER SECTION
SCALE: 1/8" = 1'-0"



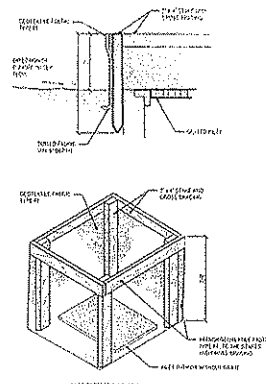
15 CONCRETE PAVING DETAIL
SCALE: 1/8" = 1'-0"



14 STONE CHECK DAM DETAILS
SCALE: 1/8" = 1'-0"

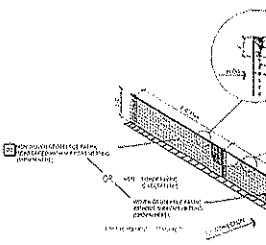


13 STONE TRACKING PAD DETAIL
SCALE: 1/8" = 1'-0"

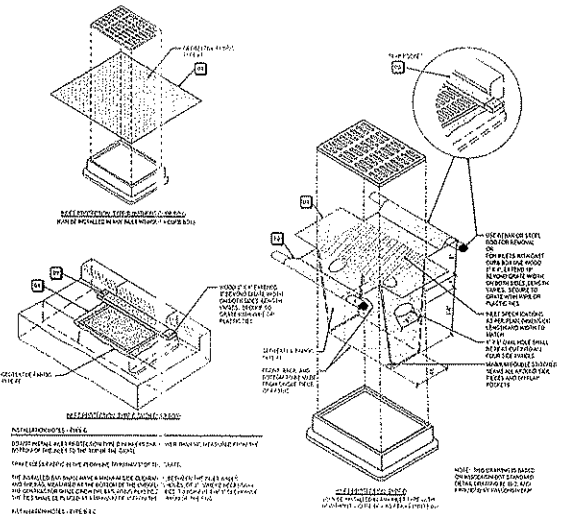


11 STORM DRAIN INLET PROTECTION
SCALE: 1/8" = 1'-0"

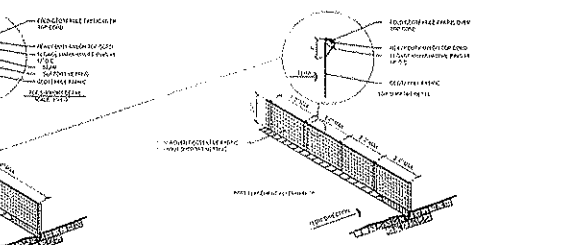
- REQUIREMENTS:**
1. THE PROTECTIVE CURB SHALL BE CONSTRUCTED OF CONCRETE AND SHALL BE 4" HIGH AND 6" WIDE.
 2. THE PROTECTIVE CURB SHALL BE INSTALLED AT THE INLET OF ALL STORM DRAINAGE STRUCTURES.
 3. THE PROTECTIVE CURB SHALL BE INSTALLED AT THE INLET OF ALL STORM DRAINAGE STRUCTURES.



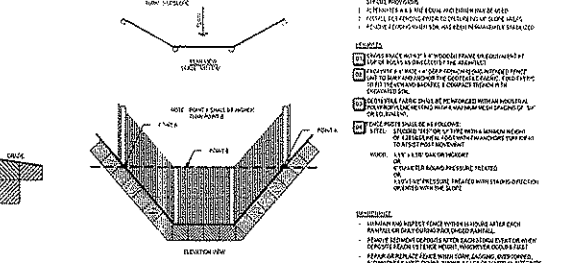
09 OVERLAND FLOW SILT FENCE DETAILS
SCALE: 1/8" = 1'-0"



- REQUIREMENTS:**
1. THE PROTECTIVE CURB SHALL BE CONSTRUCTED OF CONCRETE AND SHALL BE 4" HIGH AND 6" WIDE.
 2. THE PROTECTIVE CURB SHALL BE INSTALLED AT THE INLET OF ALL STORM DRAINAGE STRUCTURES.
 3. THE PROTECTIVE CURB SHALL BE INSTALLED AT THE INLET OF ALL STORM DRAINAGE STRUCTURES.



14 STONE CHECK DAM DETAILS
SCALE: 1/8" = 1'-0"



13 STONE TRACKING PAD DETAIL
SCALE: 1/8" = 1'-0"

09 OVERLAND FLOW SILT FENCE DETAILS
SCALE: 1/8" = 1'-0"

PROJECT ARCHITECT: **VOGEL**

PROJECT NO. 100

DATE 10/10/10

SHEET NO. OF 100

ARCHITECTURE: **Angus Young**

ENGINEERING: **Angus Young**

INTERIOR DESIGN: **Angus Young**

MESSIAH LUTHERAN CHURCH
ADDITION AND RENOVATION
MESSIAH LUTHERAN CHURCH
MADISON, WI

C802

FILTRATION DEVICE PLANT LEGEND

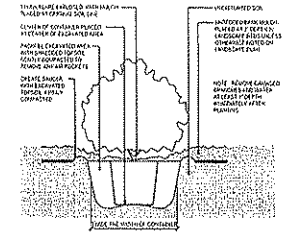
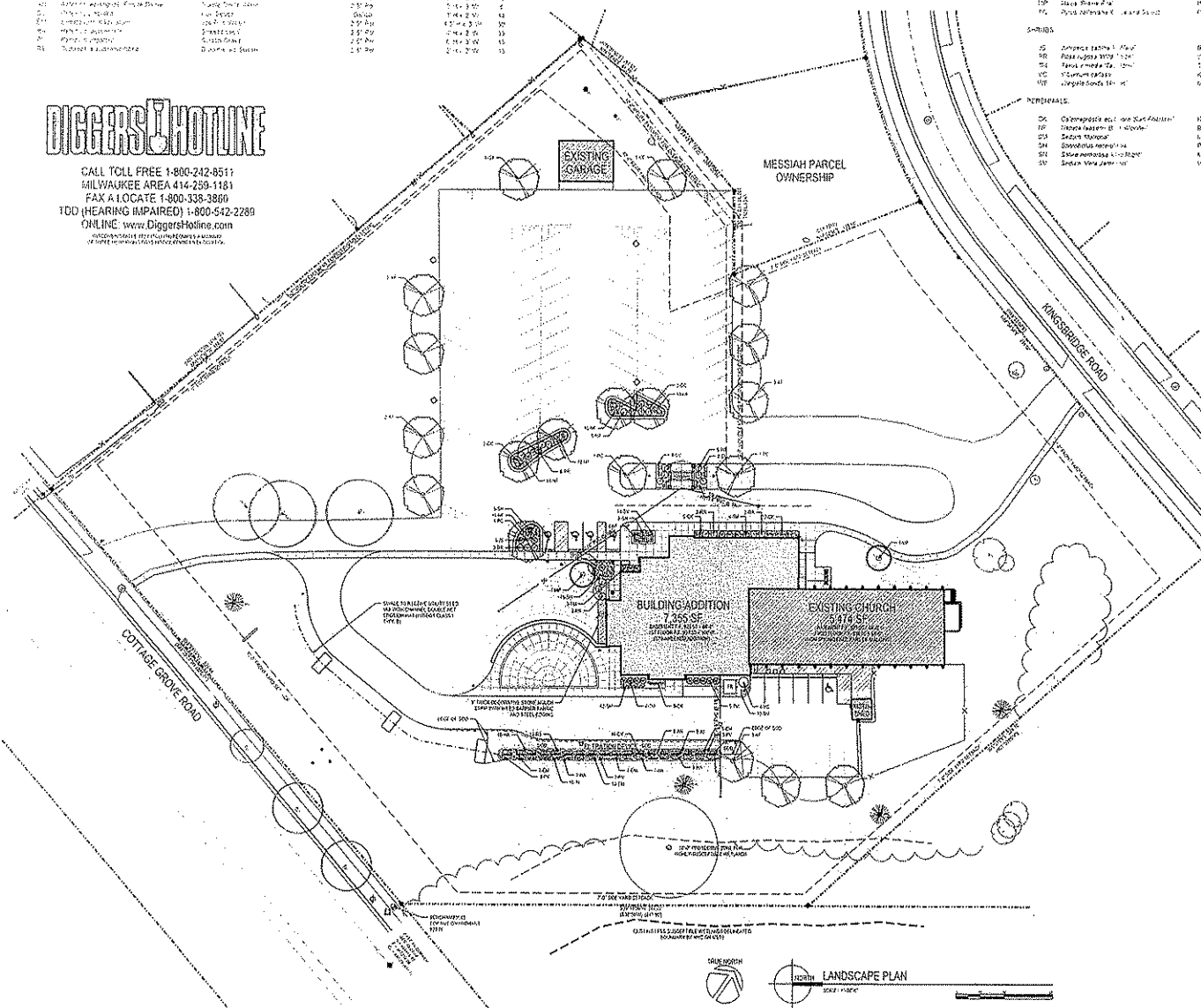
SYMBOL	PLANT NAME	COMMON NAME	HIGHESTED SIZE	ROOT	HEIGHT SIZE	QTY
1	Red Oak	Quercus rubra	2.0' Sp.	1.4" x 2.0"	15	
2	Red Maple	Acer rubrum	2.0' Sp.	1.4" x 2.0"	2	
3	White Birch	Betula papyrifera	1.4" x 2.0"	1.4" x 2.0"	4	
4	White Birch	Betula papyrifera	2.0' Sp.	1.4" x 2.0"	30	
5	White Birch	Betula papyrifera	1.4" x 2.0"	1.4" x 2.0"	30	
6	White Birch	Betula papyrifera	1.4" x 2.0"	1.4" x 2.0"	15	
7	White Birch	Betula papyrifera	1.4" x 2.0"	1.4" x 2.0"	15	



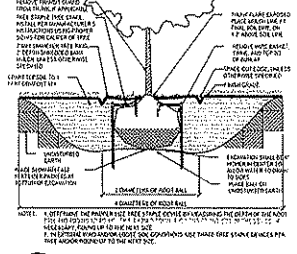
CALL TOLL FREE 1-800-242-8511
 MILWAUKEE AREA 414-289-1181
 FAX A LOCATE 1-800-338-3866
 TDD (HEARING IMPAIRED) 1-800-542-2289
 ONLINE www.DiggersHotline.com

LANDSCAPE PLANT LEGEND

SYMBOL	BOT. CAL NAME	CULTIVAR NAME	INSTALLED SIZE	ROOT	PLANTER SIZE	QTY
TREES						
01	American Elm	Ulmus americana	2.0' Cal.	3.0'	15" x 15" V	15
02	Red Oak	Quercus rubra	2.0' Cal.	3.0'	15" x 15" V	1
03	White Birch	Betula papyrifera	2.0' Cal.	3.0'	15" x 15" V	2
04	White Birch	Betula papyrifera	2.0' Cal.	3.0'	15" x 15" V	2
05	White Birch	Betula papyrifera	2.0' Cal.	3.0'	15" x 15" V	3
SHRUBS						
06	Japanese Spindle Tree	Eucalyptus nitens	12" H x 12" W	1.0' Sp.	15" x 15" V	5
07	Red Spirea	Spiraea alba	12" H x 12" W	1.0' Sp.	15" x 15" V	21
08	Red Spirea	Spiraea alba	12" H x 12" W	1.0' Sp.	15" x 15" V	15
09	Red Spirea	Spiraea alba	12" H x 12" W	1.0' Sp.	15" x 15" V	1
10	Red Spirea	Spiraea alba	12" H x 12" W	1.0' Sp.	15" x 15" V	3
PERENNIALS						
11	Blue Star Jasmine	Yucca filamentosa	4" Sp.	3" H x 2" W	44	
12	Blue Star Jasmine	Yucca filamentosa	4" Sp.	3" H x 2" W	70	
13	Blue Star Jasmine	Yucca filamentosa	4" Sp.	3" H x 2" W	25	
14	Blue Star Jasmine	Yucca filamentosa	4" Sp.	3" H x 2" W	78	
15	Blue Star Jasmine	Yucca filamentosa	4" Sp.	3" H x 2" W	10	
16	Blue Star Jasmine	Yucca filamentosa	4" Sp.	3" H x 2" W	30	



03 CONTAINER PLANTING IN LANDSCAPE BED



02 B.B. SHRUB AND TREE PLANTING DETAIL

- GENERAL NOTES**
- ALL PLANTINGS TO BE INSTALLED IN ACCORDANCE WITH THE SPECIFICATIONS AND PLANTING NOTES PROVIDED ON THE PLANTING SHEETS.
 - ALL PLANTINGS TO BE INSTALLED IN ACCORDANCE WITH THE SPECIFICATIONS AND PLANTING NOTES PROVIDED ON THE PLANTING SHEETS.
 - ALL PLANTINGS TO BE INSTALLED IN ACCORDANCE WITH THE SPECIFICATIONS AND PLANTING NOTES PROVIDED ON THE PLANTING SHEETS.
 - ALL PLANTINGS TO BE INSTALLED IN ACCORDANCE WITH THE SPECIFICATIONS AND PLANTING NOTES PROVIDED ON THE PLANTING SHEETS.

LANDSCAPE CALCULATIONS

NUMBER OF TREES PROVIDED	15
NUMBER OF SHRUBS PROVIDED	21
NUMBER OF PERENNIALS PROVIDED	100
TOTAL PLANTINGS PROVIDED	136

DATE	11/15/11
PROJECT	MESSIAH LUTHERAN CHURCH ADDITION AND RENOVATION
CLIENT	MESSIAH LUTHERAN CHURCH
LOCATION	MADISON, WI
SCALE	AS SHOWN
DRAWN BY	[Signature]
CHECKED BY	[Signature]
DATE	11/15/11

Angus Young
 Architects
 Engineering
 Interiors Design

VOGEL
 We build with values.
 solutions and accountability

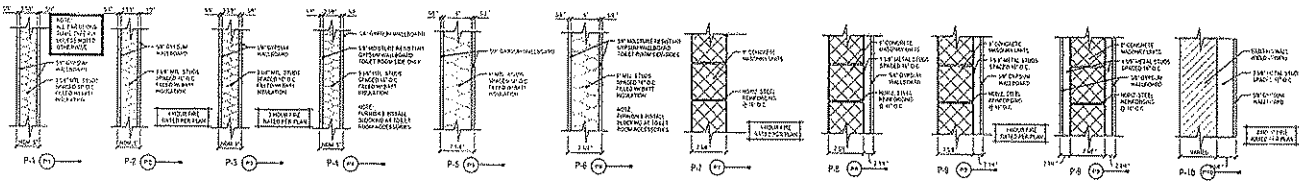
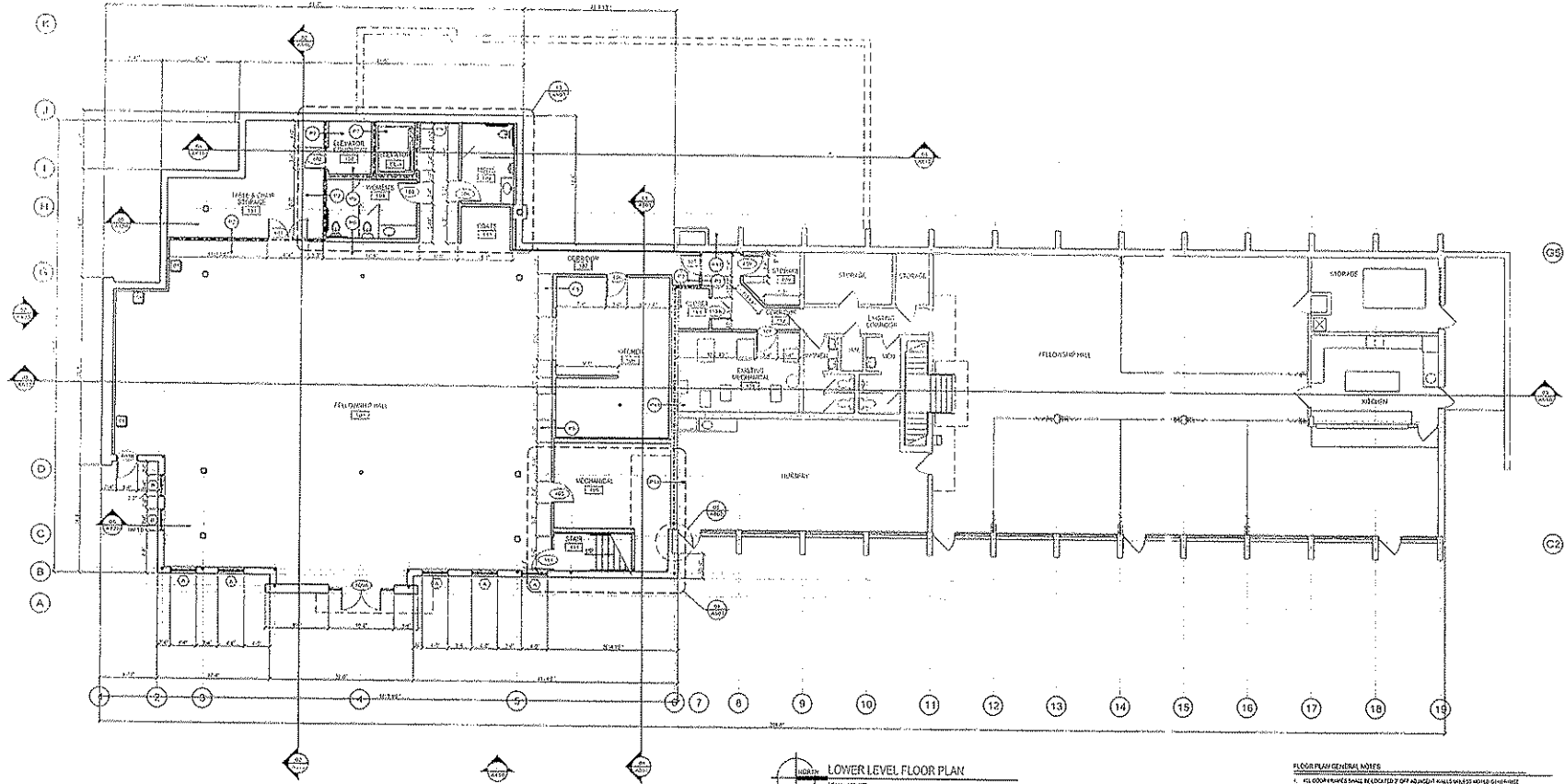
**MESSIAH LUTHERAN CHURCH
 ADDITION AND RENOVATION
 MESSIAH LUTHERAN CHURCH
 MADISON, WI**

PROJECT NUMBER	11111
DATE	11/15/11
SCALE	AS SHOWN
DRAWN BY	[Signature]
CHECKED BY	[Signature]
DATE	11/15/11

L101

DATE: 1/17/17
 DRAWN BY: JLD

SCALE: AS SHOWN



21 INTERIOR PARTITION TYPES
 A100

- FLOOR PLAN GENERAL NOTES**
- ALL ROOM PARTS SHALL BE LOCATED BY AN ADJACENT WALL UNLESS MORE SPECIFIC NOTES OR SYMBOLS ARE PROVIDED FOR THE CONSTRUCTION.
 - REFER TO MECHANICAL, ELECTRICAL, AND PLUMBING DRAWINGS FOR FIELD PARTS AND CONDITIONS.
 - ALL CONSTRUCTION SHALL BE IN ACCORDANCE WITH THE 2015 INTERNATIONAL RESIDENTIAL CODE BOOK (IRC).
 - SEE ARCHITECTURAL NOTES FOR FIELD PARTS AND CONDITIONS.
 - REFER TO STRUCTURAL DRAWINGS FOR FIELD PARTS AND CONDITIONS.

- STEEL SYMBOLS NOTES**
- INDICATE THE TYPE AND SIZE OF STEEL.
 - SHALL BE SUPPLIED AS ALL WELDED, ROLL FORMED, OR SHEET PILING TO ADOPT THE LATEST AISC STEEL EDITION.
 - PROVIDE THE TYPE OF ALL STEEL BEAMS SHALL BE IDENTIFIED WITH CORNER LETTERS AT THE CONNECTIONS.

- FORM MATERIALS LEGEND**
- FINISH FLOOR
 - FINISH FLOOR

- NOTES**
- SEE ARCHITECTURAL NOTES FOR FIELD PARTS AND CONDITIONS.

PROJECT NUMBER:	17-001
DATE:	1/17/17
DRAWN BY:	JLD
CHECKED BY:	JLD
APPROVED BY:	JLD

ANGUS YOUNG
 ARCHITECTURE
 ENGINEERING
 INTERIOR DESIGN

ANGUS YOUNG
 ARCHITECTURE
 ENGINEERING
 INTERIOR DESIGN

VOGEL
 We build with values.
 solutions and accountability

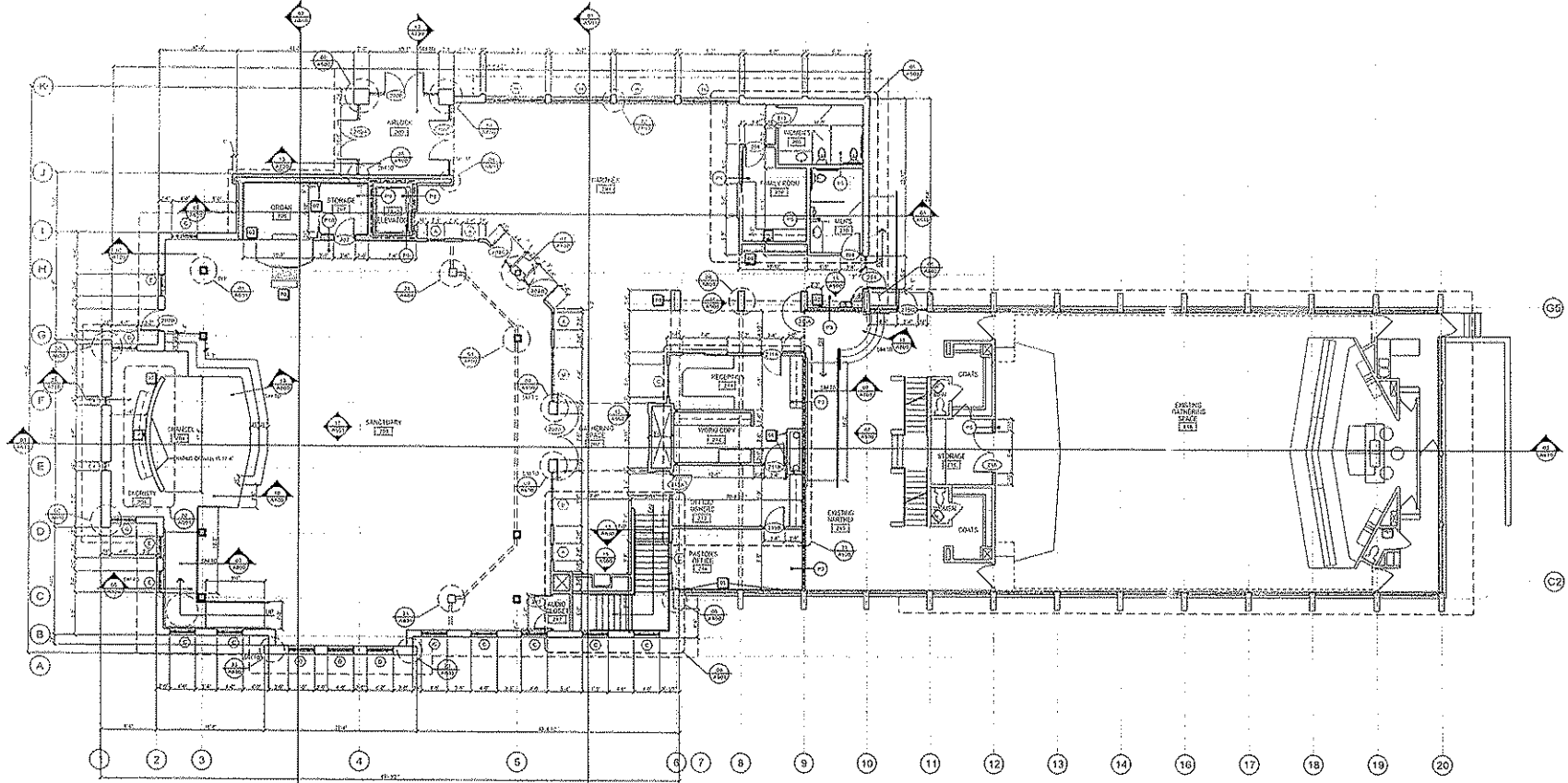
MESSIAH LUTHERAN CHURCH
 ADDITION AND RENOVATION
 MESSIAH LUTHERAN CHURCH
 MADISON, WI

PROJECT NUMBER:	17-001
DATE:	1/17/17
DRAWN BY:	JLD
CHECKED BY:	JLD
APPROVED BY:	JLD

LOWER LEVEL FLOOR PLAN

A100

DATE: 11/17/17
 DRAWN BY: [unintelligible]



FIRST LEVEL FLOOR PLAN
 SCALE: 1/8" = 1'-0"

- FLOOR PLAN GENERAL NOTES**
1. ALL ROOM FINISHES SHALL BE LOCATED BY OR ADJUSTED TO MATCH NOTES SURROUNDING THE ROOM.
 2. REFER TO ALL NOTES FOR FINISHES, MATERIALS, AND METHODS OF INSTALLATION.
 3. ALL WORK SHALL BE IN ACCORDANCE WITH THE LATEST EDITIONS OF THE BUILDING CODES AND ALL APPLICABLE REGULATIONS.
 4. ALL WORK SHALL BE IN ACCORDANCE WITH THE LATEST EDITIONS OF THE BUILDING CODES AND ALL APPLICABLE REGULATIONS.
 5. ALL WORK SHALL BE IN ACCORDANCE WITH THE LATEST EDITIONS OF THE BUILDING CODES AND ALL APPLICABLE REGULATIONS.
- STEEL STUD WALL NOTES**
1. WALLS SHALL BE 12" HIGH AND 12" THICK.
 2. WALLS SHALL BE IN ACCORDANCE WITH THE LATEST EDITIONS OF THE BUILDING CODES AND ALL APPLICABLE REGULATIONS.
 3. WALLS SHALL BE IN ACCORDANCE WITH THE LATEST EDITIONS OF THE BUILDING CODES AND ALL APPLICABLE REGULATIONS.
- FIRE RATING LEGEND**
- 1 HOUR FIRE RATED
 2 HOUR FIRE RATED
- KEY NOTES**
1. ALL WORK SHALL BE IN ACCORDANCE WITH THE LATEST EDITIONS OF THE BUILDING CODES AND ALL APPLICABLE REGULATIONS.
 2. ALL WORK SHALL BE IN ACCORDANCE WITH THE LATEST EDITIONS OF THE BUILDING CODES AND ALL APPLICABLE REGULATIONS.
 3. ALL WORK SHALL BE IN ACCORDANCE WITH THE LATEST EDITIONS OF THE BUILDING CODES AND ALL APPLICABLE REGULATIONS.
 4. ALL WORK SHALL BE IN ACCORDANCE WITH THE LATEST EDITIONS OF THE BUILDING CODES AND ALL APPLICABLE REGULATIONS.
 5. ALL WORK SHALL BE IN ACCORDANCE WITH THE LATEST EDITIONS OF THE BUILDING CODES AND ALL APPLICABLE REGULATIONS.

VOGEL
 ARCHITECTS
 WE BUILD WITH VALUES
 SOLUTIONS AND ACCOUNTABILITY

ANGUS
 ARCHITECTURE
 ENGINEERING
 INTERIOR DESIGN

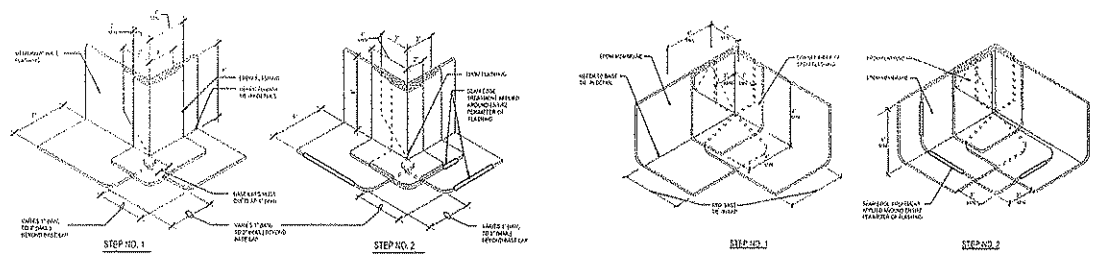
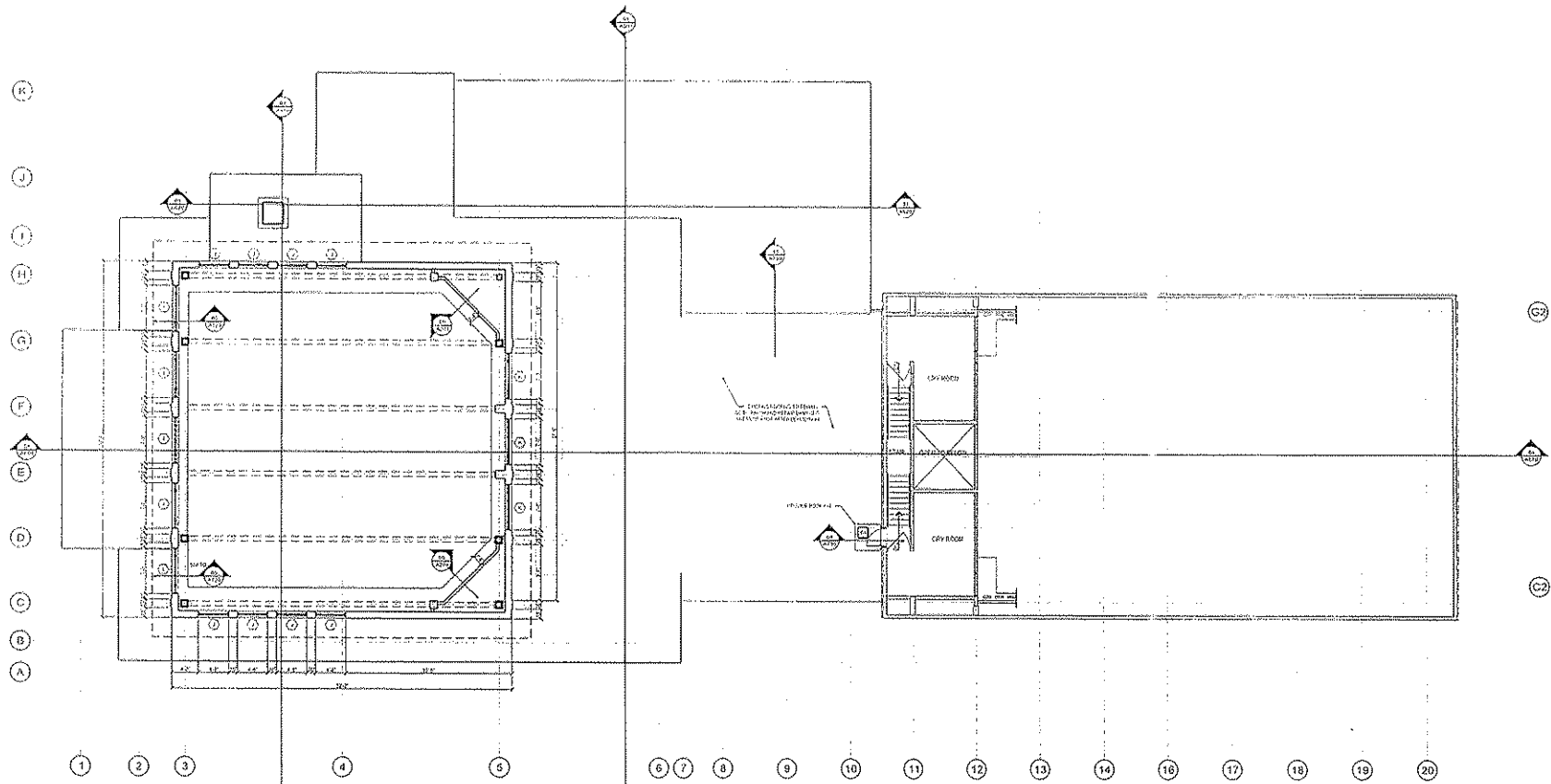
YOUNG
 ARCHITECTURE
 ENGINEERING
 INTERIOR DESIGN

PROJECT NUMBER: 17-001
 DATE: 11/17/17
 DRAWN BY: [unintelligible]
 CHECKED BY: [unintelligible]
 APPROVED BY: [unintelligible]

MESSIAH LUTHERAN CHURCH
 ADDITION AND RENOVATION
 MESSIAH LUTHERAN CHURCH
 MADISON, WI

A101

DATE: 11/11/11
 SCALE: 1/8" = 1'-0"
 DRAWN BY: J. W. WILSON
 CHECKED BY: J. W. WILSON



21 OUTSIDE CORNER FLASHING DETAILS
 SCALE: 1/8" = 1'-0"

13 INSIDE CORNER FLASHING DETAILS
 SCALE: 1/8" = 1'-0"

- FLOOR IN AN GENERAL NOTES**
1. REFER TO PLAN THREE SHEETS FOR WALL CONSTRUCTION.
 2. REFER TO SECTION ELECTRICAL AND FINISHES FOR WALL FINISHES.
 3. REFER TO SECTION FINISHES FOR WALL FINISHES.
 4. REFER TO SECTION FINISHES FOR WALL FINISHES.
- STEEL FRAMING NOTES**
1. REFER TO SECTION FINISHES FOR WALL FINISHES.
 2. REFER TO SECTION FINISHES FOR WALL FINISHES.
 3. REFER TO SECTION FINISHES FOR WALL FINISHES.
 4. REFER TO SECTION FINISHES FOR WALL FINISHES.
- TEMPORARY**
- 14 ACCESS TO ROOF FOR DETAIL INSPECTION

REVISIONS	DATE	BY

Angus Young
 Architecture
 Engineering
 Interior Design

VOGEL
 We build with values.
 solutions and accountability

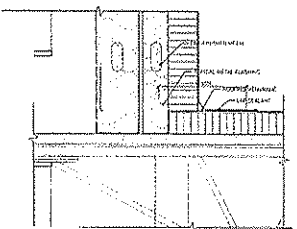
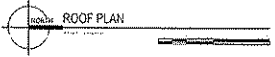
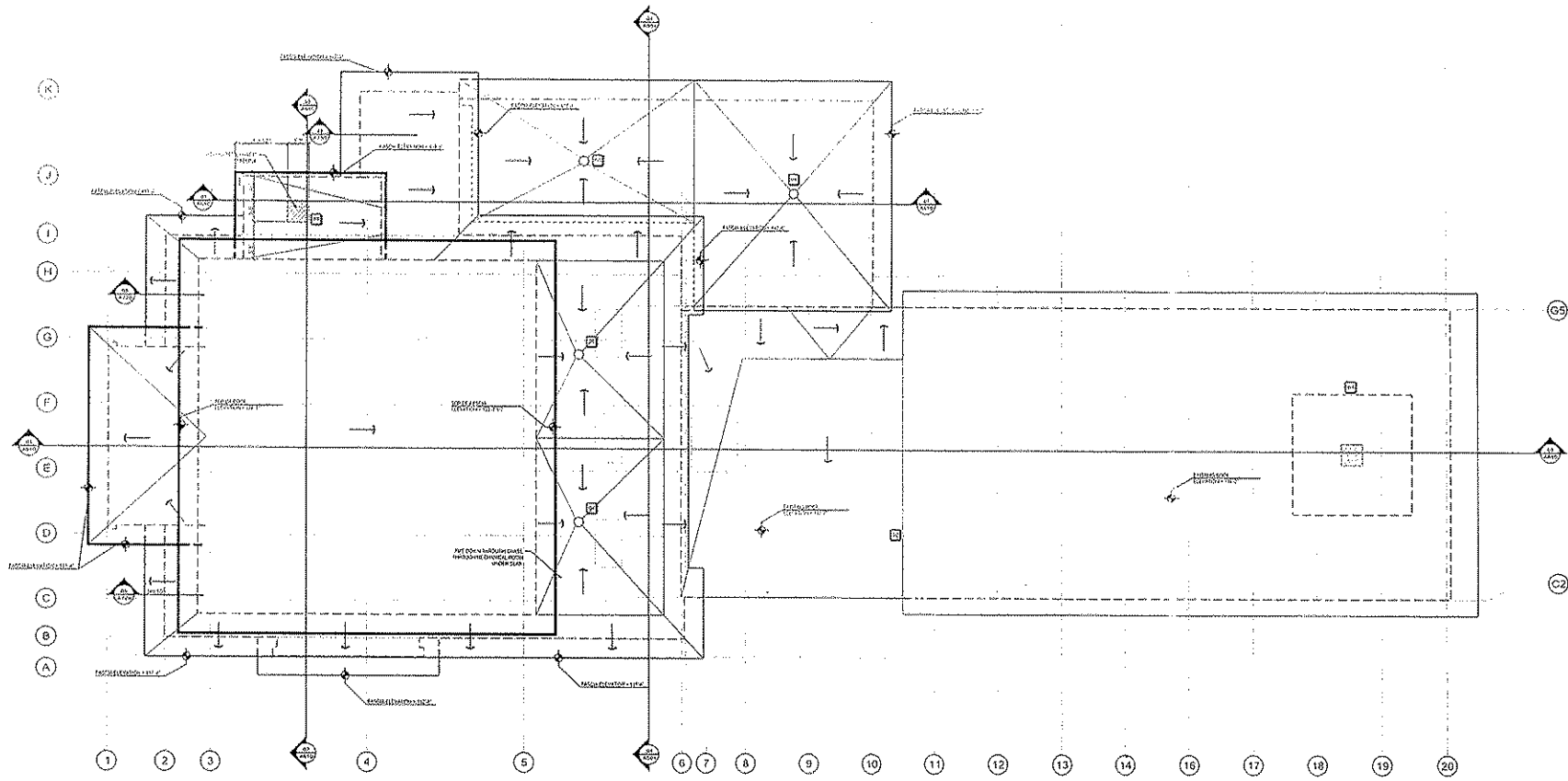
MESSIAH LUTHERAN CHURCH
 ADDITION AND RENOVATION
 MESSIAH LUTHERAN CHURCH
 MADISON, WI

PROJECT LEADER	DATE
APPROVED BY	DATE
REVISION	DATE
DATE	DATE

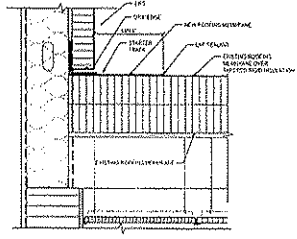
CLEARSTORY PLAN
 AND DETAILS

A102

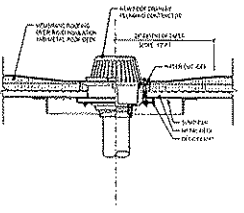
DATE: 10/15/14
 SCALE: AS SHOWN
 PROJECT: MESSIAH LUTHERAN CHURCH



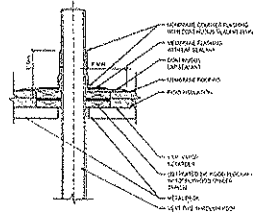
21 TYPICAL BOTTOM OF EIFS DETAIL
 A110



17 EIFS DETAIL AT EXISTING ROOF
 A110



13 ROOF DRAIN DETAIL AT METAL DECK
 A110



09 VENT FLASHING SECTION AT METAL DECK
 A110

ROOF PLAN GENERAL NOTES

1. REFER TO ELECTRICAL, MECHANICAL, AND PLUMBING DRAWINGS FOR THE LOCATION OF ALL MECHANICAL ROOMS, ELECTRICAL ROOMS, AND PLUMBING ROOMS. ALL ROOMS SHALL BE PROTECTED BY A MINIMUM OF 2" OF CONCRETE OR 4" OF GYPSUM BOARD OVER THE ROOF DECK.
2. ALL ROOF CURBS SHALL BE 4" HIGH AND 12" WIDE. ALL ROOF CURBS SHALL BE CONCRETE OR GYPSUM BOARD OVER THE ROOF DECK.
3. SEE DETAILS 13 AND 14 FOR ROOF CURB FLASHING DETAIL.

REVISED

11. DRINKING FOUNTAIN DETAIL PLATFORM GC TO BE INSTALLED AS SHOWN.
12. SEE DETAIL 10 FOR ACCESS DOOR.
13. SEE DETAIL 13 FOR FLASHING AND DETAIL.
14. ROOF CURB DETAIL AS SHOWN.
15. SEE DETAIL 15 FOR ROOF CURB FLASHING DETAIL.

PROJECT NO.	10/15/14
DATE	10/15/14
DESIGNED BY	ANGUS YOUNG
CHECKED BY	ANGUS YOUNG
DATE	10/15/14
PROJECT NO.	10/15/14

Angus Young
 Architect
 Engineering
 Interior Design
 1000 Wisconsin Avenue, Suite 1000
 Madison, WI 53706
 Tel: 608.261.1234

VOGEL
 INCORPORATED
 We build with values.
 solutions and accountability

MESSIAH LUTHERAN CHURCH
 ADDITION AND RENOVATION
 MESSIAH LUTHERAN CHURCH
 MADISON, WI

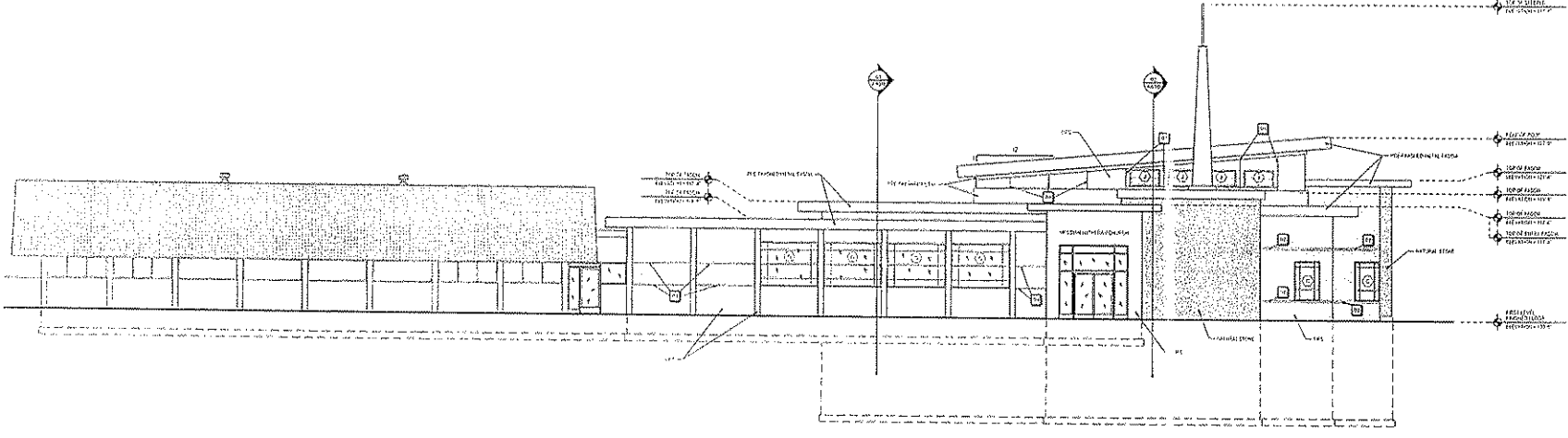
PROJECT NO.	10/15/14
DATE	10/15/14
DESIGNED BY	ANGUS YOUNG
CHECKED BY	ANGUS YOUNG
DATE	10/15/14

ROOF PLAN
 AND ROOF DETAILS

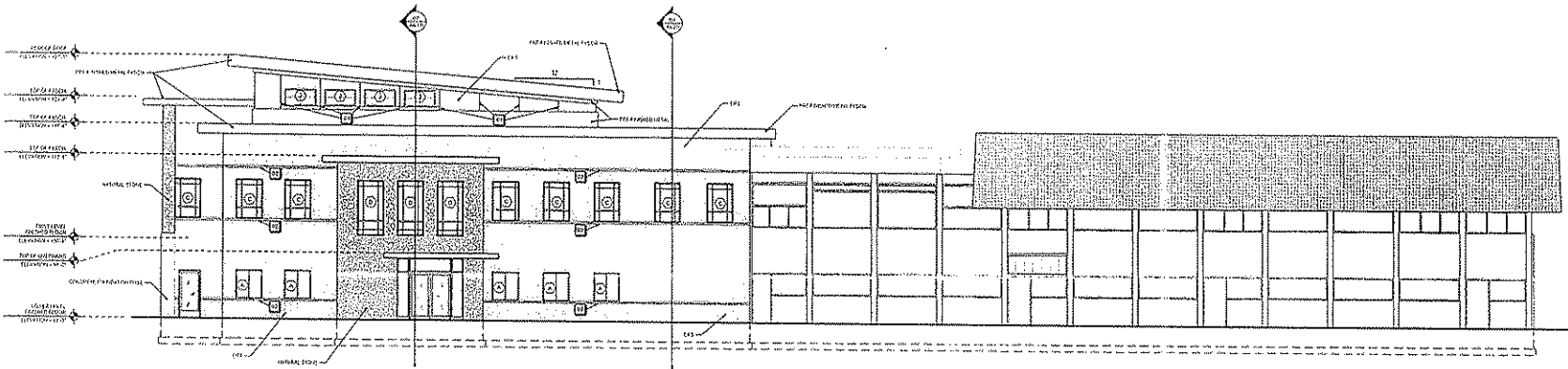
A110

DATE: 11/17/11
 DRAWN BY: J. J. JENSEN
 CHECKED BY: J. J. JENSEN

SCALE: 1/8" = 1'-0"
 1/4" = 1'-0"



02 WEST ELEVATION
 DATE: 11/17/11



01 EAST ELEVATION
 DATE: 11/17/11

- REVISIONS
- 01 REVISION: SEE SHEET NO. 01110
 - 02 REVISION: SEE SHEET NO. 01110

PROJECT NO.	1101110
DATE	11/17/11
SCALE	1/8" = 1'-0"
DRAWN BY	J. J. JENSEN
CHECKED BY	J. J. JENSEN
PROJECT NAME	MESSIAH LUTHERAN CHURCH ADDITION AND RENOVATION
PROJECT ADDRESS	1101110
PROJECT CITY	MADISON, WI
PROJECT STATE	WI
PROJECT ZIP	53703
PROJECT PHONE	608.261.1111
PROJECT FAX	608.261.1111
PROJECT EMAIL	info@vogelyoung.com
PROJECT WEBSITE	www.vogelyoung.com

Angus Young
 Architecture
 Engineering
 Interior Design

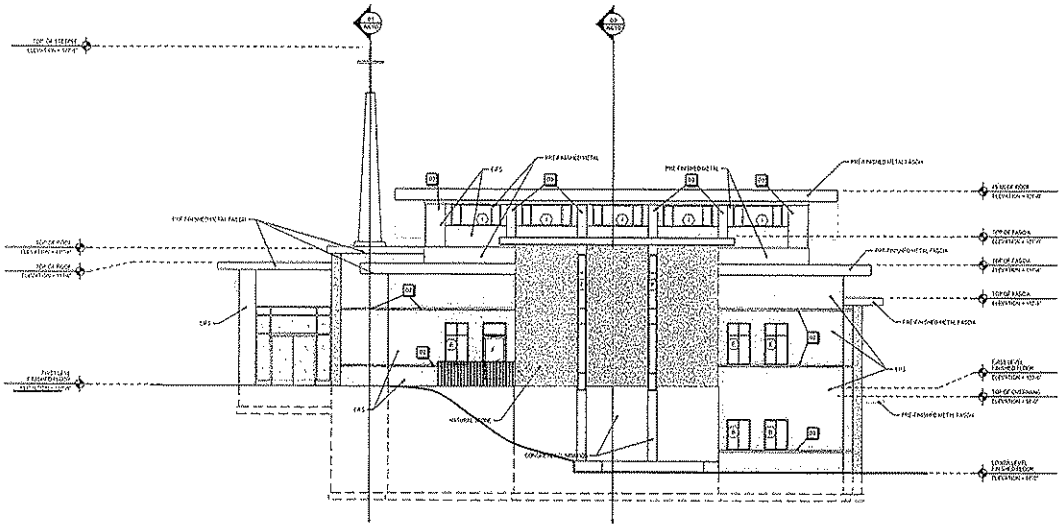
1101110
 11/17/11
 1101110
 11/17/11
 1101110
 11/17/11

VOGEL
 We build with values.
 solutions and accountability

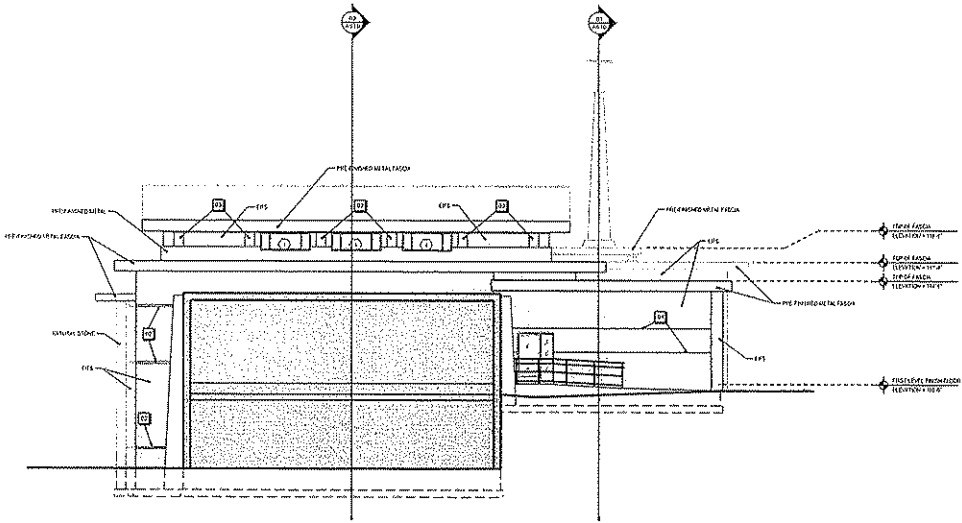
MESSIAH LUTHERAN CHURCH
 ADDITION AND RENOVATION
 MESSIAH LUTHERAN CHURCH
 MADISON, WI

PROJECT LEADER
 APPROVED BY
 REVIEWED BY
 DATE

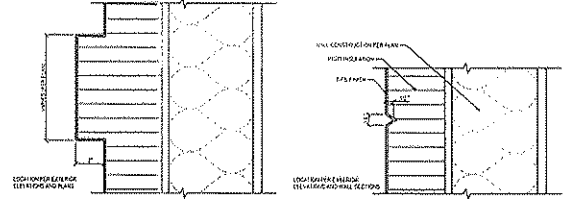
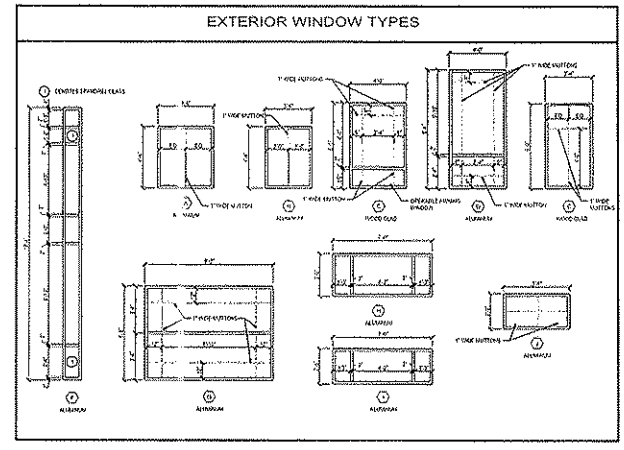
A410



02 SOUTH ELEVATION
SCALE: 1/4"=1'-0"

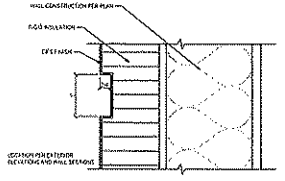


01 PARTIAL NORTH ELEVATION
SCALE: 1/4"=1'-0"



07 TYPICAL EIFS BUMP-OUT DETAIL
SCALE: 3/4"=1'-0"

03 TYPICAL EIFS REVEAL DETAIL
SCALE: 3/4"=1'-0"



02 TYPICAL 3\"/>

- REVNOTES
- 01 TYPICAL EIFS REVEAL - SEE DETAIL NO. 02-04
 - 02 TYPICAL 3\"/>
 - 03 EIFS BUMP-OUT - SEE DETAIL NO. 07-03

SCALE: 1/4"=1'-0"
DATE: 10/1/2014

PROJECT NUMBER: A420
DRAWN BY: [Name]
CHECKED BY: [Name]

REVISION	DATE	BY	DESCRIPTION

ANGUS YOUNG
Architecture
Engineering
Interior Design

VOGEL
We build with integrity,
solutions and accountability.

MESSIAH LUTHERAN CHURCH
ADDITION AND RENOVATION
MESSIAH LUTHERAN CHURCH
MADISON, WI

PROJECT NUMBER: A420
APPROVED BY: [Signature]
REVISION BY: [Signature]
DRAWN BY: [Signature]

A420