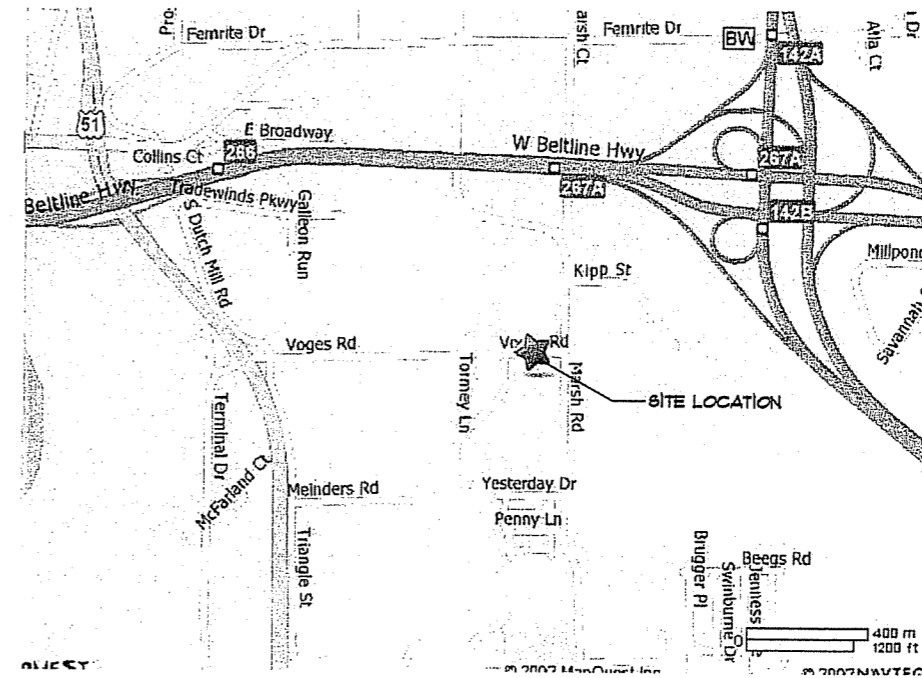


PROPOSED FACILITY FOR:

LOMBARDO COMMERCIAL PROJECT

5402 VOGES ROAD
Madison, Wisconsin

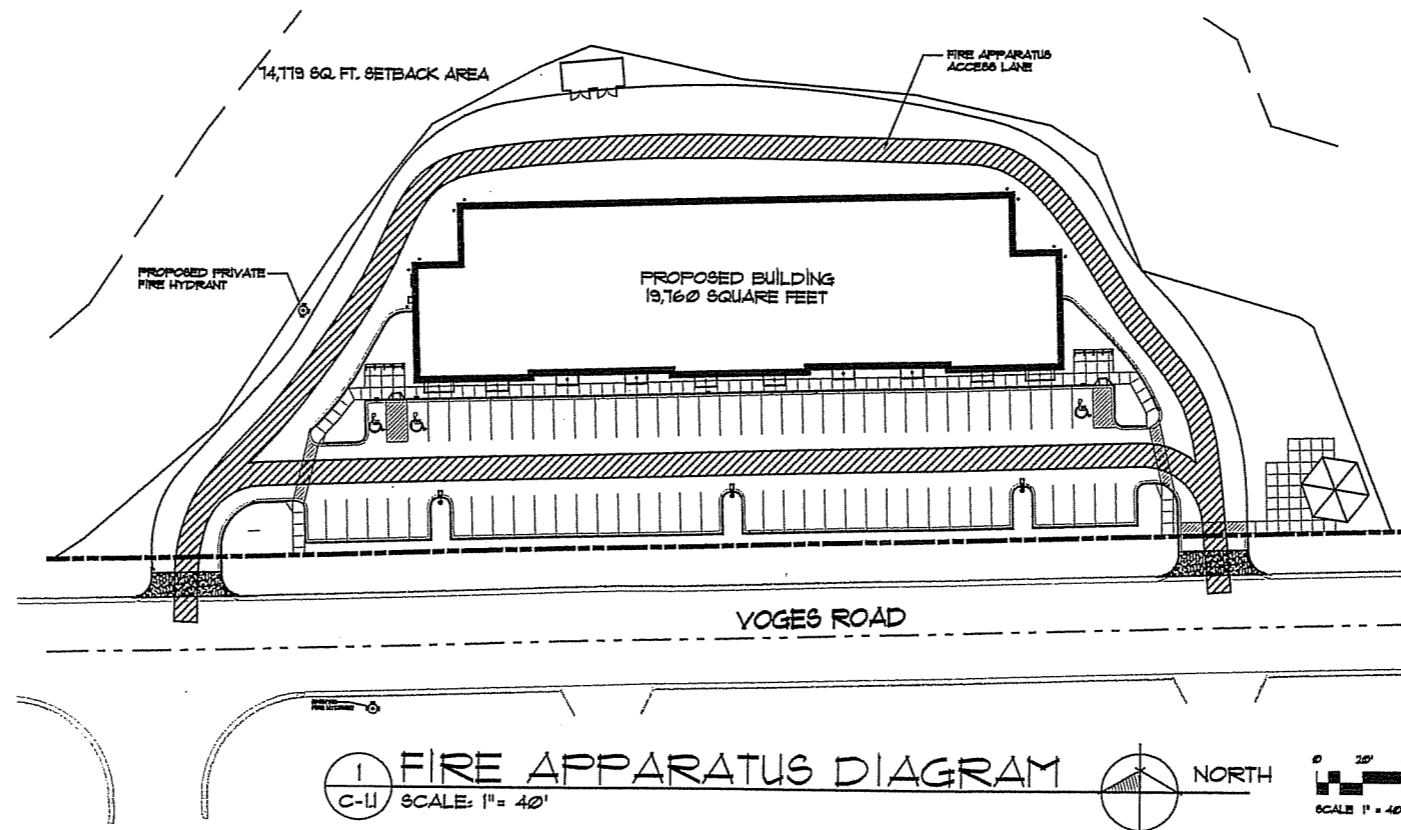
TJK TJK Design Build
634 W. Main
Madison, WI 53703
DESIGN BUILD 608-257-1090 FAX 608-257-1092



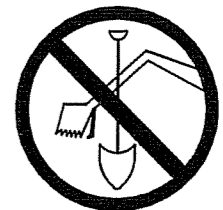
SITE LOCATION MAP

INDEX OF DRAWINGS:

- C-1.0 OVERALL PROPOSED SITE PLAN
- C-1.1 PROPOSED SITE PLAN
- C-1.2 GRADING PLAN
- C-1.3 UTILITY PLAN
- C-1.4 EROSION CONTROL
- C-1.5 BIORETENTION
- C-1.6 LANDSCAPE PLAN
- C-1.7 PHOTOMETRICS PLAN
- A-1.1 FLOOR PLAN
- A-2.1 EXTERIOR ELEVATIONS



TO OBTAIN LOCATIONS OF PARTICIPANTS UNDERGROUND FACILITIES BEFORE YOU DIG IN WISCONSIN



CALL DIGGERS HOTLINE
1-800-242-8511
TOLL FREE

WIS STATUTE 182.0175(1974)
REQUIRES MIN. 3 WORK DAYS
NOTICE BEFORE YOU EXCAVATE

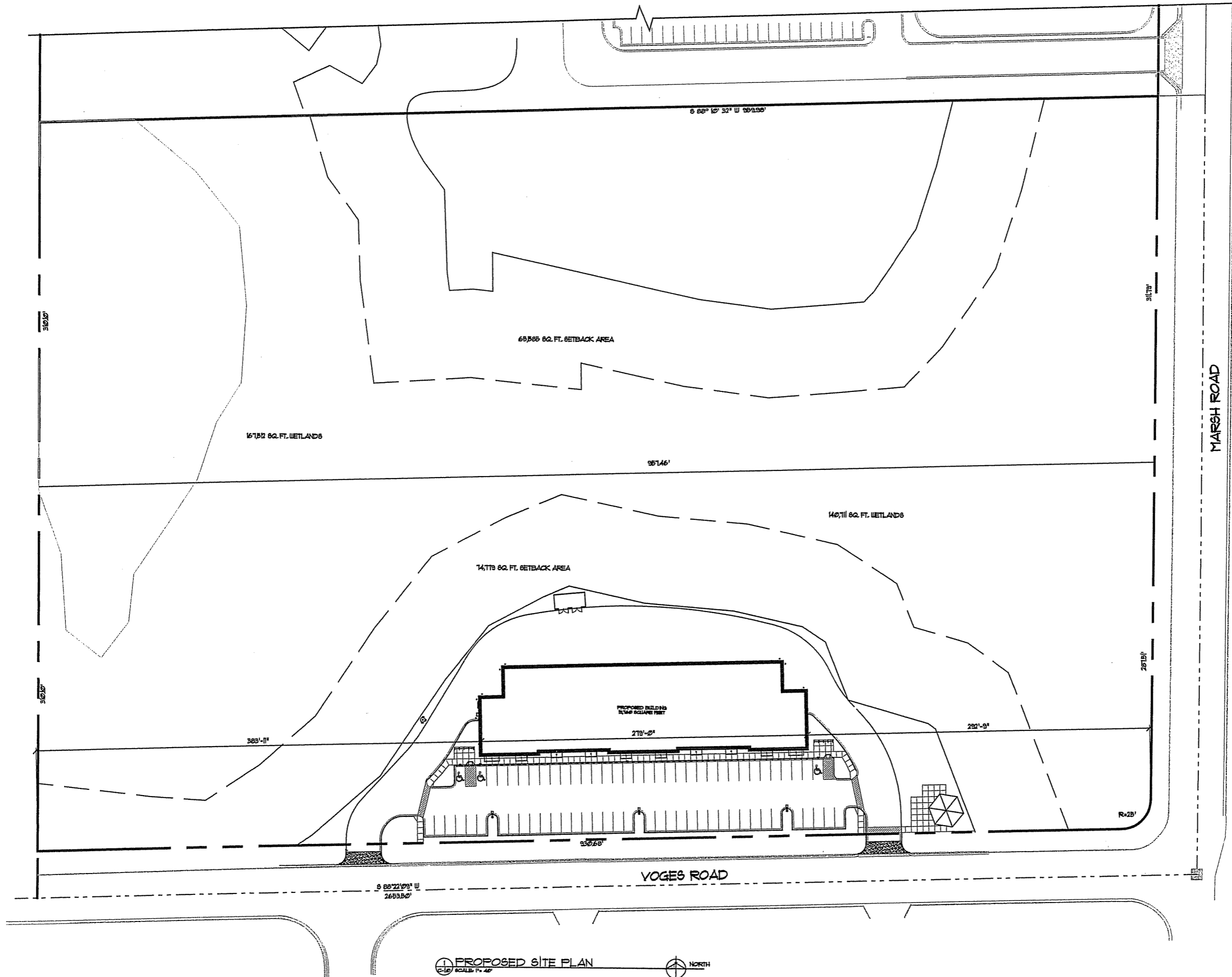
PROPOSED FACILITY FOR:
DEMING WAY RETAIL

COPYRIGHTED DRAWING
THIS DOCUMENT OR THE INFORMATION
HEREIN IS NOT TO BE REPRODUCED,
DISTRIBUTED, USED OR DISCLOSED
WITHOUT THE WRITTEN CONSENT OF
TJK DESIGN BUILD

PROPOSED FACILITY FOR:
5402 YOGES ROAD

5402 YOGES ROAD
MADISON, WISCONSIN

C-10

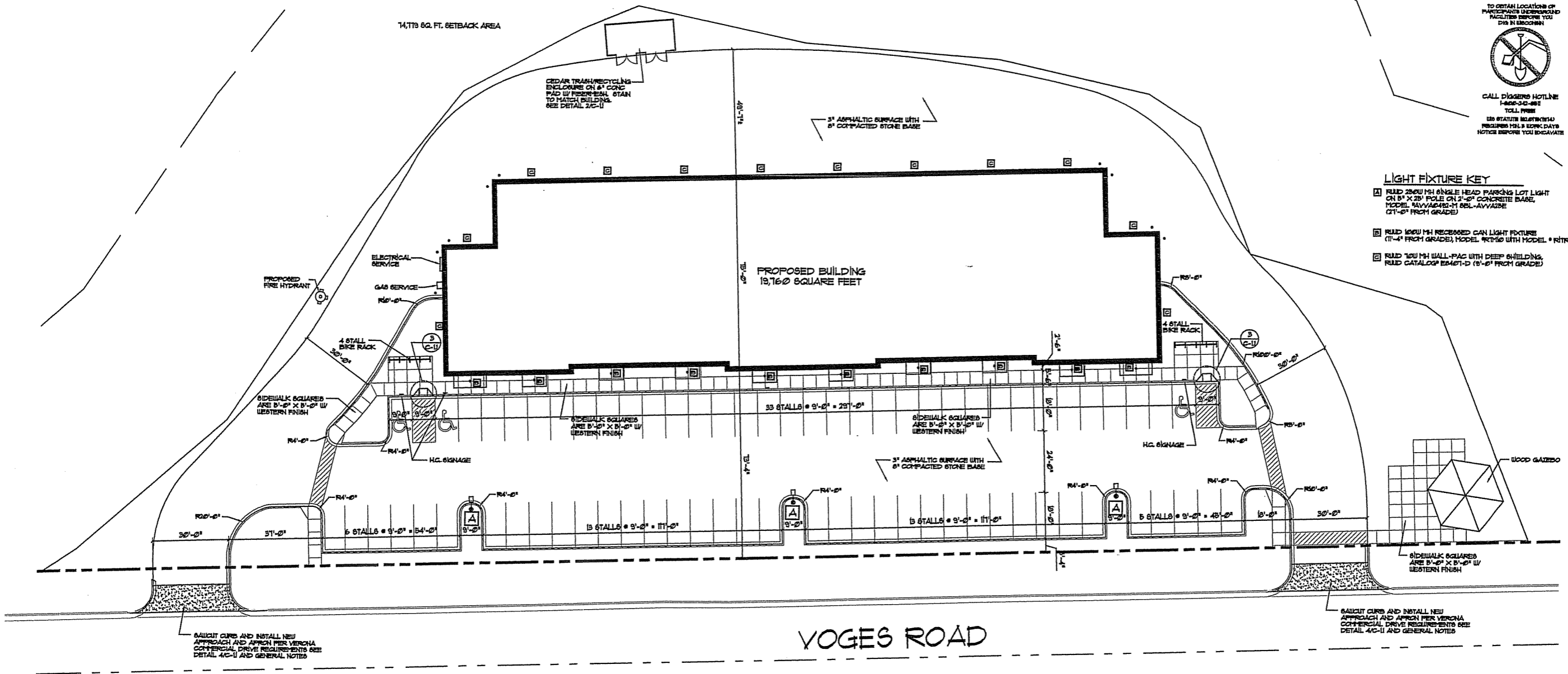


PROPOSED SITE PLAN
SCALE: 1" = 40'
NORTH

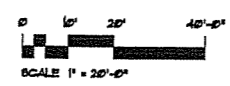
TO OBTAIN LOCATION OF PARTICIPANTS UNDERGROUND FACILITIES BEFORE YOU DIG IN WISCONSIN
CALL DIGGERS HOTLINE 1-888-345-8881 TOLL FREE
60 STATUTE REGISTRATION REQUIRED 14-15 WORK DAYS NOTICE BEFORE YOU EXCAVATE

LIGHT FIXTURE KEY

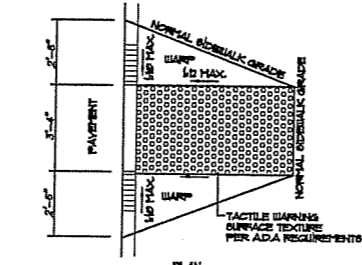
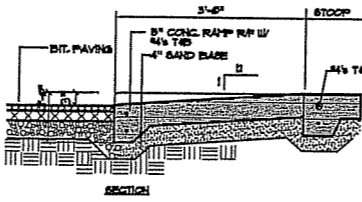
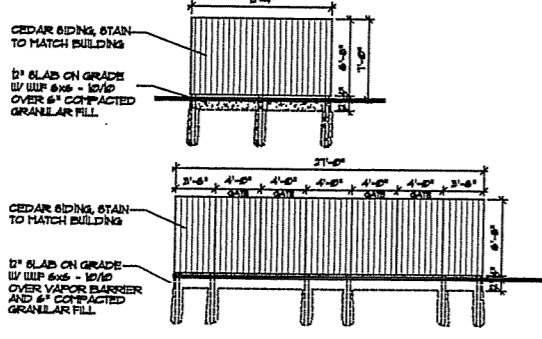
- 1. RUD 280W MH SINGLE HEAD PARKING LOT LIGHT ON 5" X 28" POLE ON 2'-0" CONCRETE BASE, MODEL: SAVVAD80-11 BEL-AVVA80E (21'-0" FROM GRADE)
- 2. RUD 160W MH RECESSED CAN LIGHT FIXTURE (11'-4" FROM GRADE), MODEL: RCM50 WITH MODEL: R174R
- 3. RUD 160W MH WALL-PAC WITH DEEP SHIELDING, RUD CATALOG EB401-D (15'-0" FROM GRADE)



1 PROPOSED SITE PLAN
C-11 SCALE: 1" = 20'



- LEGEND:**
- PROPERTY CORNER
 - PROPERTY LINE
 - SAN SANITARY SEWER
 - STH STORM SEWER
 - WATER MAIN
 - FIRE HYDRANT
 - UTILITY POLE W/ LIGHT
 - MANHOLE
 - WATER VALVE
 - CURB INLET
 - STORM SEWER ACCESS COVER
 - SPOT ELEVATION
 - MONITORING WELL
 - ▨ EXISTING BUILDING



PARKING LOT PLAN SITE INFORMATION BLOCK

SITE ADDRESS	5402 VOGES ROAD MADISON, WISCONSIN
SITE ACREAGE (TOTAL)	68,881 SQ FT ± BLD ACRES
NUMBER OF BUILDING STORIES (ABOVE GRADE) / STORY	1 / 1
BUILDING HEIGHT	28'-0" (TOP OF PARAPET)
DIAPHR TYPE OF CONSTRUCTION (NEW STRUCTURES OR ADDITIONS)	TYPE: FULLY OPEN RIBBED
TOTAL SQUARE FOOTAGE OF BUILDING	19,760 SQ FT
USE OF PROPERTY	RESTAURANT
GROSS SQUARE FEET OF OFFICE	19,760 SQ FT
GROSS SQUARE FEET OF RETAIL AREA	N.A.
NUMBER OF EMPLOYEES IN BUSINESS	N.A.
NUMBER OF EMPLOYEES ON PRODUCTION AREA	N.A.
CAPACITY OF RESTAURANT / PLACE OF ASSEMBLY	N.A.
NUMBER OF BICYCLE STALLS SHOWN	N.A.
TYPE OF FOUNDATION	POURED CONCRETE
NUMBER OF PARKING STALLS (TOTAL) SHOWN	68

SMALL CAR	0
LARGE CAR	68
ACCESSIBLE	3
TOTAL	71

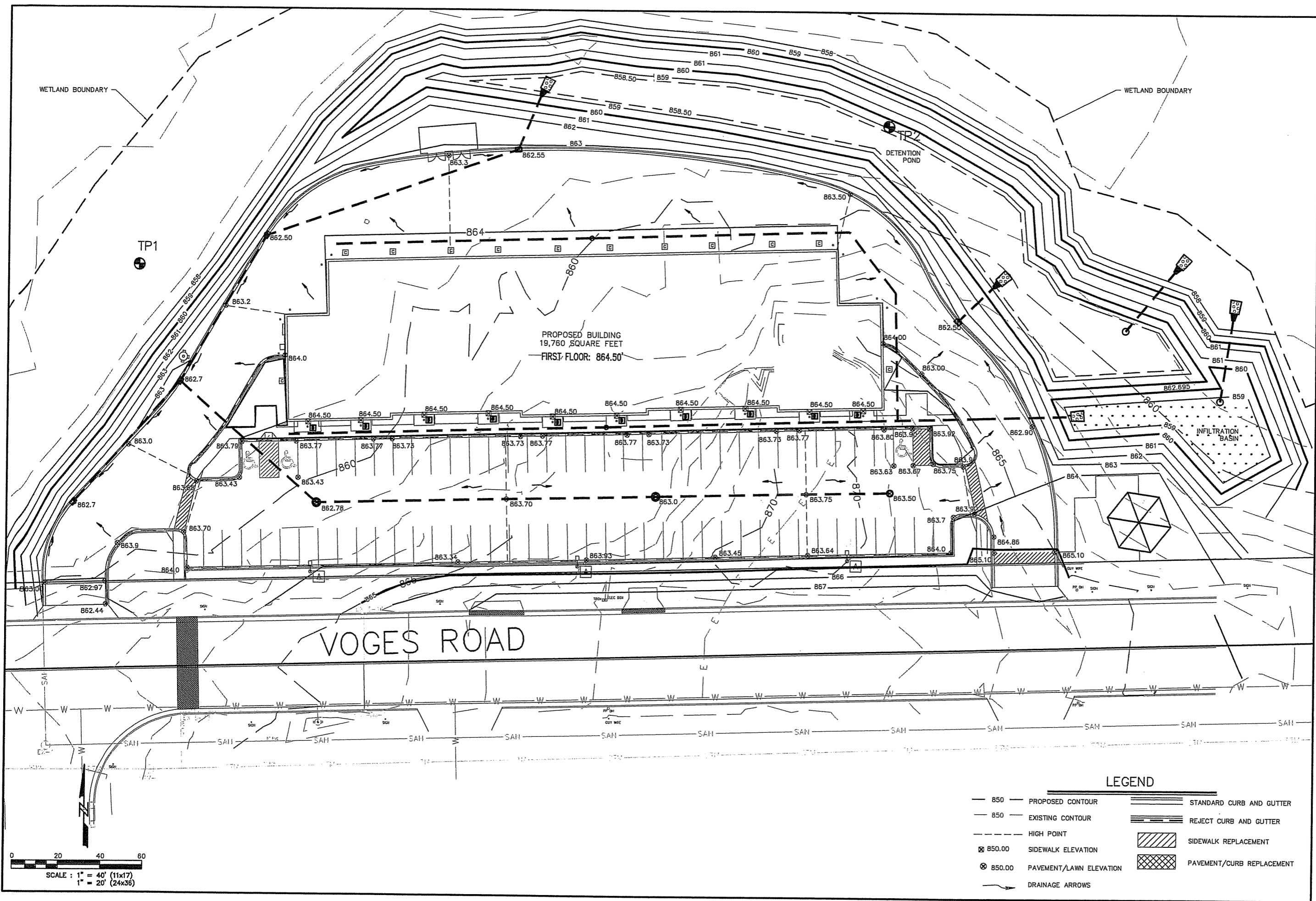
NUMBER OF TREES SHOWN SEE SHEET C-16

SITE INFORMATION

SITE SIZE	68,883 SQ FT SQ FT
BLDG AREA (FOOTPRINT)	19,760 SQ FT
PARKING AND WALKS	48,124 SQ FT
FLOOR AREA RATIO	3%
IMPERVIOUS SURFACE RATIO	12%
PARKING RATIO	1 / 300

- GENERAL NOTES:**
1. ALL PAINT STRIPINGS SHALL BE 4" SIDE, YELLOW
 2. H.C. CURB CUTS AND RAMPIS PER ADA SEC. 411 MAX SLOPE TO BE 1/4" H/L WIDTH TO BE 3/4" FLARE SIDES 1" EACH SIDE WITH MAX SLOPE OF 1/4". AREA TO BE COLORED CONCRETE WITH TEXTURE IN COMPLIANCE WITH ADA REQUIREMENTS
 3. ALL DIMENSIONS ARE FROM FACE OF CONCRETE WALL, FACE OF CURB OR CENTER OF PROPERTY LINE
 4. BITUMINOUS PAVING IS 3" SURFACE COURSE ON 6" COMPACTED STONE BASE
 5. ALL EXTERIOR CONCRETE SIDEWALKS TO BE 6" BAG MIX WITH WESTERN FINISH 5" THICK W/ W/EP REINFORCING ON 6" COMPACTED FILL
 6. WATER SERVICE MATERIAL SHALL BE CL 80 DL
 7. SEWER AND WATER CONSTRUCTION SHALL BE COMPLETED IN ACCORDANCE WITH THE CITY OF MADISON STANDARD SPECIFICATION FOR PUBLIC WORKS CONSTRUCTION
 8. FIRE PROTECTION SHALL BE PROVIDED IN ACCORDANCE WITH THE REQUIRED REND OF THE FIRE DEPARTMENT
 9. SIDEWALKS AND DRIVEWAY APRON CONSTRUCTION WITHIN THE PUBLIC RIGHTS OF WAY SHALL BE CONSTRUCTED IN ACCORDANCE WITH THE CITY OF MADISON STANDARD SPECIFICATIONS FOR PUBLIC WORKS CONSTRUCTION
 10. DURING CONSTRUCTION REMOVE CASTING GRATE ON ALL CATCH BASINS INSTALL WATER PERMEABLE MEMBRANE FOR GILT INFILTRATION PROTECTION AND REINSTALL CASTING GRATE SECURE MEMBRANE IN THE FLOW LINE WITH 2"X4 MATERIAL, 1"MIN/1"
 11. EXISTING WATERMAIN VALVES SHALL BE MARKED AND PROTECTED FOR DURATION OF CONSTRUCTION
 12. SLOPES GREATER THAN 5% SHALL BE LINED WITH EROSION MATTING
 13. TRACKED MATERIAL SHALL BE COLLECTED BY THE GENERAL CONTRACTOR AT THE END OF EACH WORKING DAY OR AS REQUIRED BY THE CITY
 14. PROVIDE KNOX BOX FOR THE FIRE DEPARTMENT. CO-ORDINATE LOCATION WITH FIRE DEPARTMENT PRIOR TO INSTALLATION
 15. SIGNAGE IS NOT PART OF THIS PROJECT BUDGET
 16. THE PUBLIC WORKS DEPARTMENT SHALL BE NOTIFIED A MINIMUM OF 48 HOURS BEFORE THE START OF WORK IN THE RIGHT OF WAY OR UTILITY CONNECTIONS

PROPOSED FACILITY FOR:
5402 VOGES ROAD
MADISON, WISCONSIN



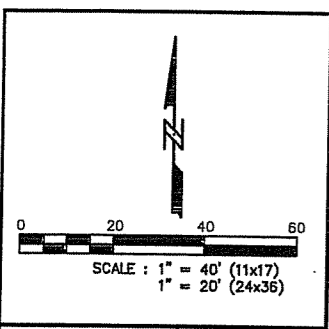
PROPOSED BUILDING
19,760 SQUARE FEET
FIRST FLOOR: 864.50'

VOGES ROAD

LEGEND

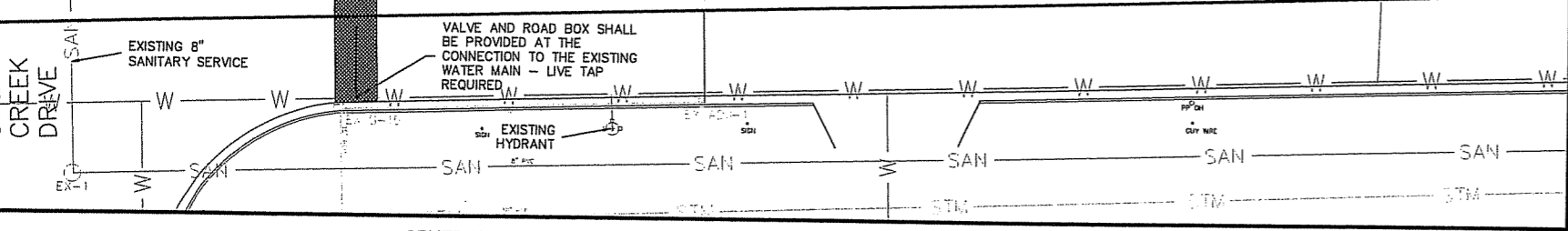
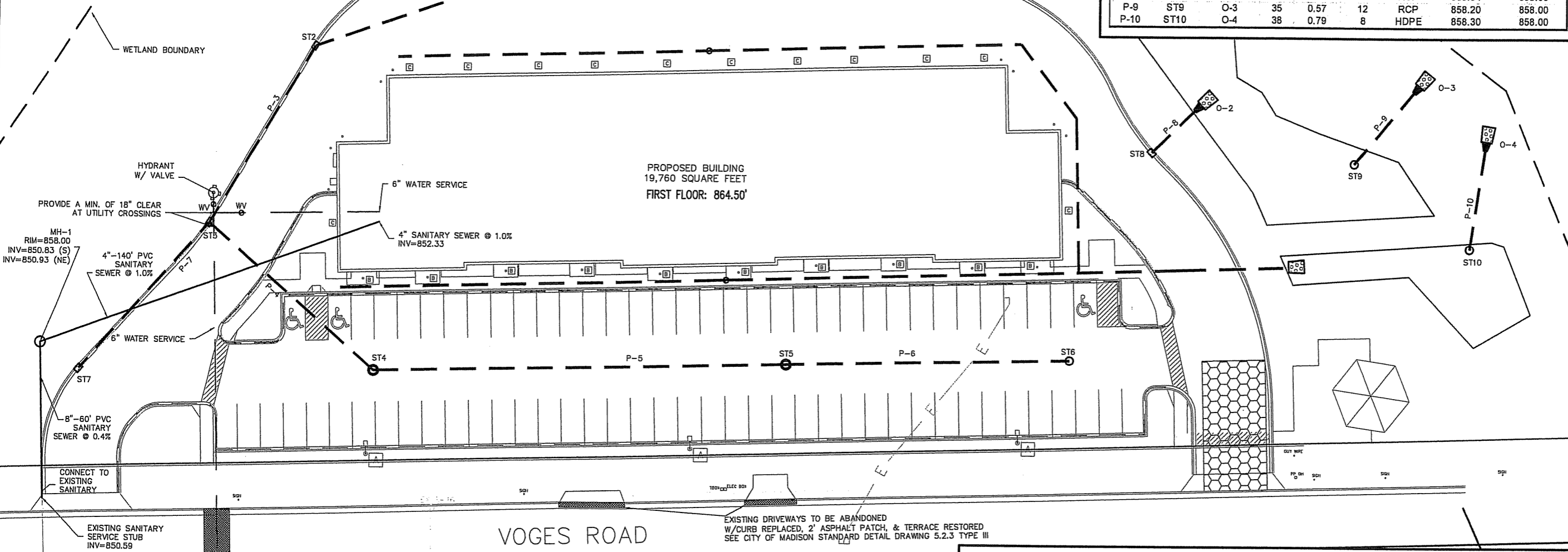
- 850 — PROPOSED CONTOUR
- 850 — EXISTING CONTOUR
- - - - - HIGH POINT
- ⊗ 850.00 SIDEWALK ELEVATION
- ⊗ 850.00 PAVEMENT/LAWN ELEVATION
- DRAINAGE ARROWS
- ===== STANDARD CURB AND GUTTER
- ===== REJECT CURB AND GUTTER
- ▨ SIDEWALK REPLACEMENT
- ▩ PAVEMENT/CURB REPLACEMENT

0 20 40 60
SCALE : 1" = 40' (11x17)
1" = 20' (24x36)



STORM SEWER PIPE DATA:

Pipe No.	Upstream Structure	Downstream Structure	Length (ft)	Slope (%)	Pipe Size	Material	Upstream I.E. (ft)	Downstream I.E. (ft)
P-1	ST1	O-1	28	0.5	15	RCP	858.71	858.50
P-2	ST2	ST1	125	0.5	15	RCP	859.33	858.71
P-3	ST3	ST2	79	0.51	15	RCP	859.73	859.33
P-4	ST4	ST3	86	0.5	12	RCP	860.16	859.73
P-5	ST5	ST4	159	0.5	12	RCP	860.95	860.16
P-6	ST6	ST5	109	0.50	12	RCP	861.50	860.95
P-7	ST7	ST3	75	0.60	12	RCP	861.14	859.73
P-8	ST8	O-2	25	1.61	12	RCP	860.94	858.50
P-9	ST9	O-3	35	0.57	12	RCP	858.20	858.00
P-10	ST10	O-4	38	0.79	8	HDPE	858.30	858.00



STORM SEWER STRUCTURE DATA:

Label	Inlet	Top of Casting Elevation (ft)	Sump Elevation (ft)	Structure Depth (ft)	Casting	Notes
O-1	15" A.E.	-	858.50	-	-	-
O-2	12" A.E.	-	858.50	-	-	-
O-3	12" A.E.	-	858.50	-	-	-
O-4	8" A.E.	-	858.50	-	-	-
ST1	H-INLET	862.99	858.64	4.35	R-3067	INLET TO CONTAIN FILTER INSERT/W BOOM, SEE SHEET C-1.4
ST2	H-INLET	862.94	859.27	3.67	R-3067	INLET TO CONTAIN FILTER INSERT/W BOOM, SEE SHEET C-1.4
ST3	H-INLET	863.14	859.67	3.47	R-3067	INLET TO CONTAIN FILTER INSERT/W BOOM, SEE SHEET C-1.4
ST4	4' CB W/INLET	862.78	860.1	2.68	R-1550 W/ OPEN GRATE	INLET TO CONTAIN FILTER INSERT/W BOOM, SEE SHEET C-1.4
ST5	3' CB W/INLET	863	860.89	2.11	R-1550 W/ OPEN GRATE	INLET TO CONTAIN FILTER INSERT/W BOOM, SEE SHEET C-1.4
ST6	3' CB W/INLET	863.50	861.44	2.06	R-1550 W/ OPEN GRATE	INLET TO CONTAIN FILTER INSERT/W BOOM, SEE SHEET C-1.4
ST7	H-INLET	862.70	860.12	2.58	R-3067	INLET TO CONTAIN FILTER INSERT/W BOOM, SEE SHEET C-1.4
ST8	H-INLET	862.94	858.9	4.04	R-3067	INLET TO CONTAIN FILTER INSERT/W BOOM, SEE SHEET C-1.4
ST9	3' CB W/INLET	860.00	858.20	1.80	-	SEE POND DETAIL
ST10	3' CB W/INLET	859.50	858.30	1.20	-	SEE POND DETAIL

EXISTING STORM SEWER INLETS

INLET ID	RIM ELEVATION	TYPE	I.E.	DEPTH
EX ADJ-1	866.13	H INLET	860.80	5.33
EX S-15	863.91	3x5 SAS	859.55	4.36
EX S-16	866.13	H INLET	862.13	4.00

EXISTING SANITARY SEWER MANHOLES

STRUCT. ID	RIM ELEVATION	TYPE	I.E.	DEPTH
EX-1	861.77	-	850.34	11.43

GENERAL NOTES:
 CONTRACTOR SHALL OBTAIN A STREET EXCAVATION PERMIT PRIOR TO CONSTRUCTION.
 CONTRACTOR SHALL OBTAIN ALL NECESSARY SEWER CONNECTION PERMITS AND SEWER PLUGGING PERMITS PRIOR TO CONSTRUCTION.
 ALL SANITARY SEWER, WATER MAIN, AND STORM SEWER SHALL BE CONSTRUCTED PER THE CITY OF MADISON STANDARD SPECIFICATIONS FOR PUBLIC WORKS CONSTRUCTION.
 ALL SUBSURFACE GARAGE CATCH BASINS SHALL BE DRAINED TO SANITARY SEWER AND INSTALLED PER DEPARTMENT OF COMMERCE GUIDELINES.
 CONTRACTOR SHALL FIELD VERIFY THE SIZE, TYPE, LOCATION, AND ELEVATION OF EXISTING UTILITIES.

PRIVATE STORM SEWER SHALL BE RCP OR ADS N-12 AS NOTED IN PIPE TABLE.
 PRIVATE WATER MAIN AND SERVICES SHALL BE DUCTILE IRON (AWWA C-151-CLASS 52).
 PRIVATE SANITARY SEWER AND LATERALS SHALL BE PVC (ASTM D3034-SDR35).
 PUBLIC SIDEWALK AT DRIVEWAY LOCATIONS SHALL BE 7" THICK.
 UTILITY PATCHES FOR PROPOSED UTILITY SERVICES SHALL BE CONSTRUCTED PER CITY OF MADISON STANDARD SPECIFICATIONS FOR PUBLIC WORKS CONSTRUCTION.

ALL WORK WITHIN THE CITY RIGHT OF WAY SHALL BE PERFORMED BY A CITY LICENSED CONTRACTOR.
 ALL SIDEWALK AND CURB & GUTTER WHICH ABUTS THE PROPERTY THAT IS DAMAGED BY THE CONSTRUCTION OR ANY SIDEWALK AND CURB & GUTTER THAT THE CITY ENGINEER DETERMINES NEEDS TO BE REPLACED BECAUSE IT IS NOT AT A DESIRABLE GRADE REGARDLESS OF WHETHER THE CONDITION EXISTED PRIOR TO BEGINNING CONSTRUCTION.

BUILDING PLUMBER SHALL VERIFY SIZE, SLOPE, AND EXACT LOCATION OF PROPOSED SANITARY LATERALS AND WATER SERVICES PRIOR TO INSTALLATION.



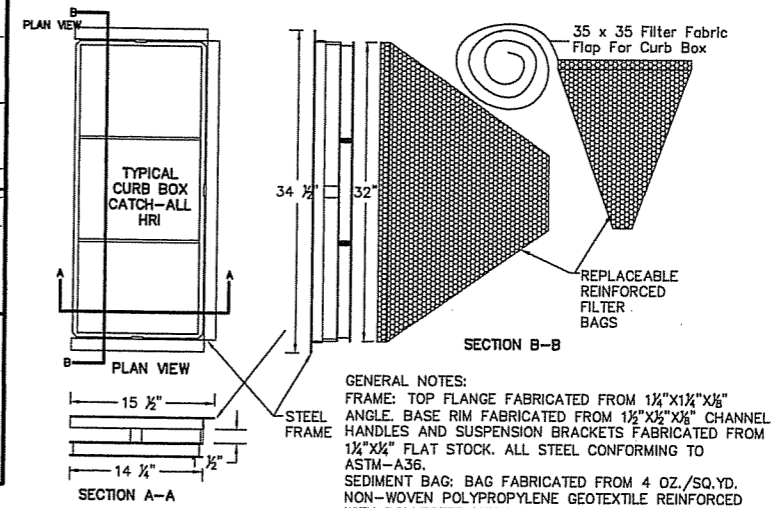
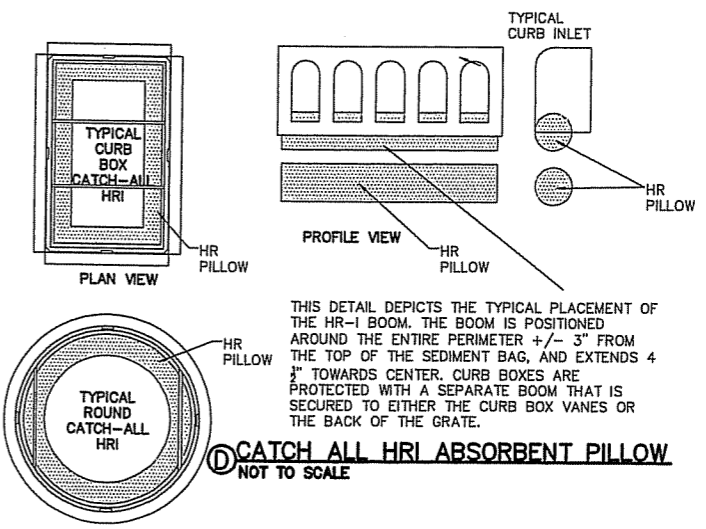
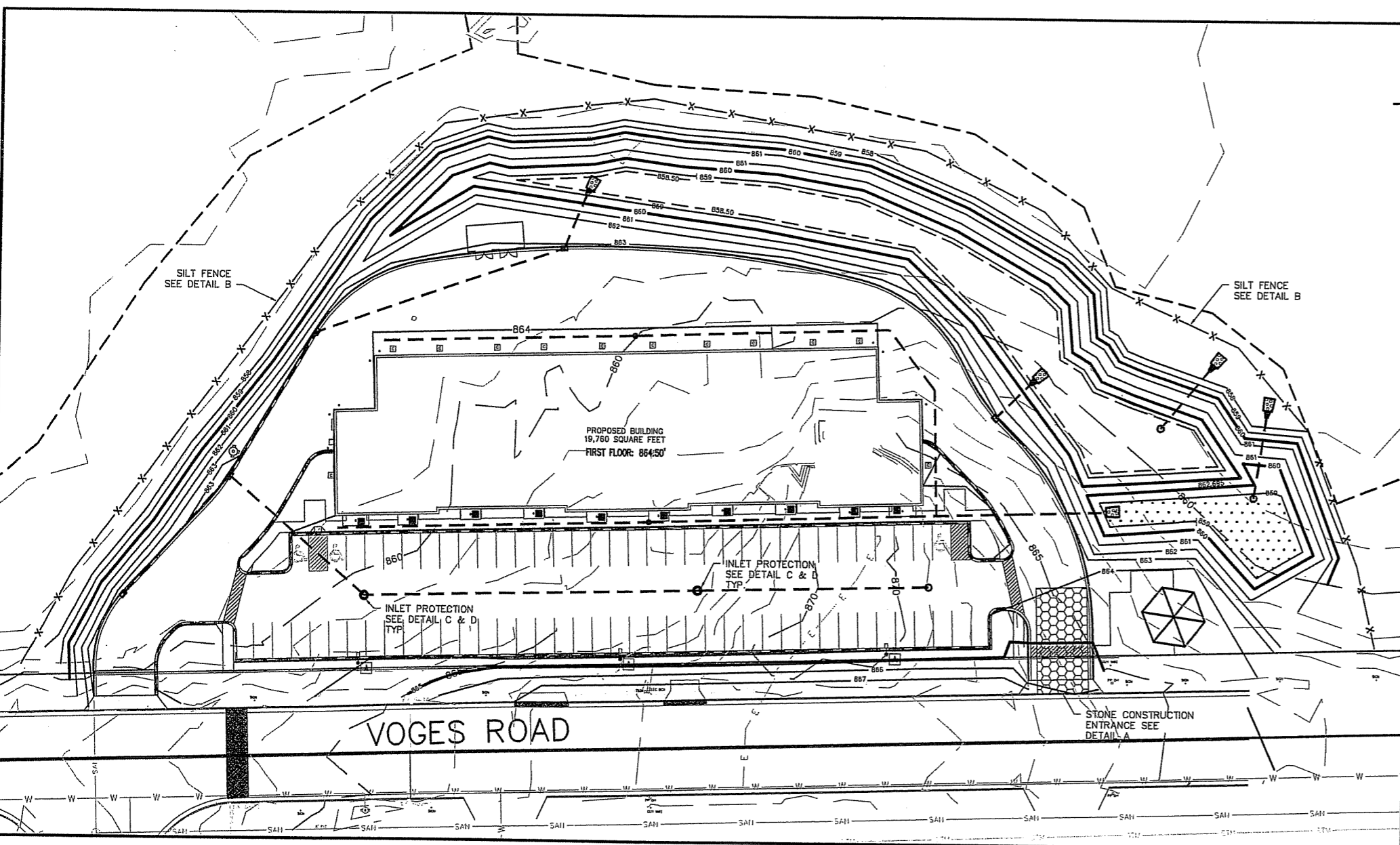
634 West Main Street
 Madison, WI 53703
 608-257-1090
 FAX 608-257-1092

Calkins Engineering, Inc.
 Civil Engineers & Land Surveyors
 Calkins Engineering, LLC
 5402 Voges Road
 Madison, WI 53718
 (608) 838-0444

COPYRIGHTED DRAWING
 THIS DOCUMENT OR THE INFORMATION HEREIN IS NOT TO BE REPRODUCED, DISTRIBUTED, USED OR DISCLOSED EITHER IN WHOLE OR PART UNLESS AUTHORIZED BY THE DESIGN AND CONSTRUCTION CO., INC.

PROPOSED FACILITY FOR:
5402 VOGES ROAD
 MADISON, WISCONSIN

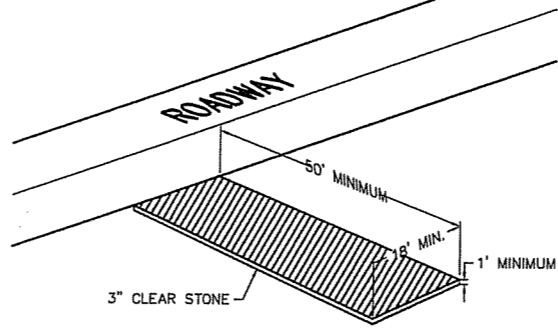
C-1.3
 6.14.07



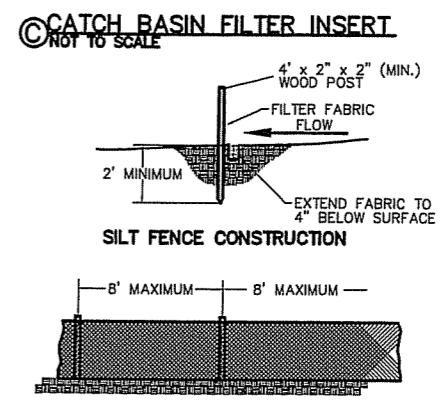
PROJECT SCHEDULE:
INSTALL EROSION CONTROL MEASURES: 5 DAYS (JULY 16, 2007-JULY 21, 2007)
SITE GRADING: 237 DAYS (JULY 21, 2007-MARCH 15, 2008)
SEED AND MULCH: MARCH 15, 2008
VEGETATION ESTABLISHED: MAY 15, 2008

IF CONSTRUCTION ACTIVATES CANNOT BE COMPLETED BY THE DATES INDICATED, REVISED SOIL LOSS CALCULATIONS AND EROSION CONTROL MEASURES MUST BE SUBMITTED TO THE CITY ENGINEER FOR APPROVAL.

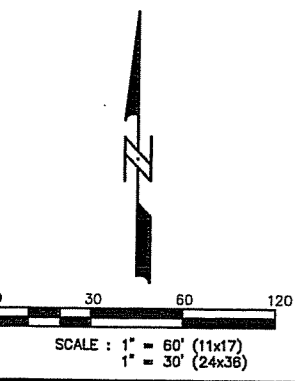
EROSION CONTROL NOTES:
STONE CONSTRUCTION ENTRANCE SHALL BE INSTALLED PRIOR TO ANY GRADING OPERATIONS AND MAINTAINED UNTIL GRAVEL BASE IS INSTALLED.
EROSION CONTROL MEASURES SHALL BE INSTALLED PRIOR TO ANY GRADING OPERATIONS AND MAINTAINED THROUGHOUT THE CONSTRUCTION PHASE OF THIS PROJECT.
TRACKED MATERIAL TO ADJACENT STREETS SHALL BE COLLECTED AT THE END OF EACH WORK DAY OR AS REQUIRED BY THE CITY.
ALL AREAS WHICH ARE NOT PAVED SHALL RECEIVE A MINIMUM OF 4\"/>

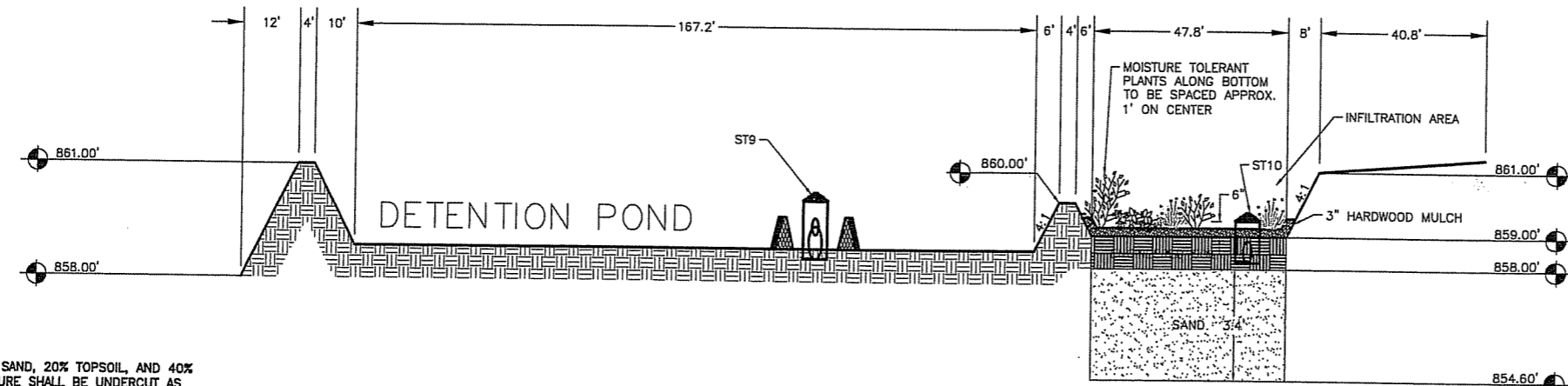
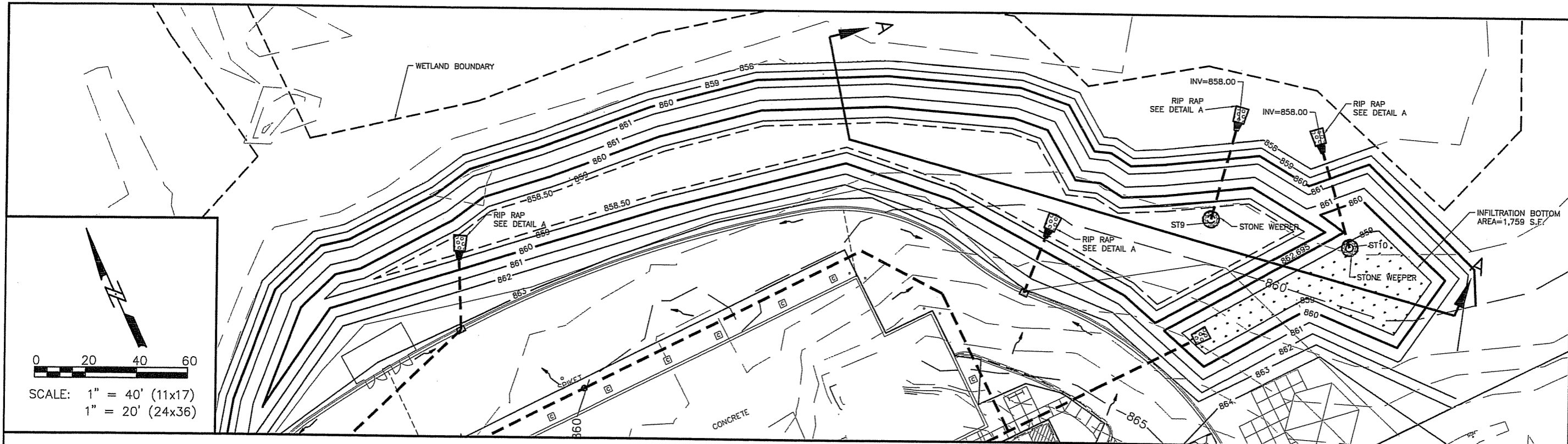


A STONE CONSTRUCTION ENTRANCE
NOT TO SCALE



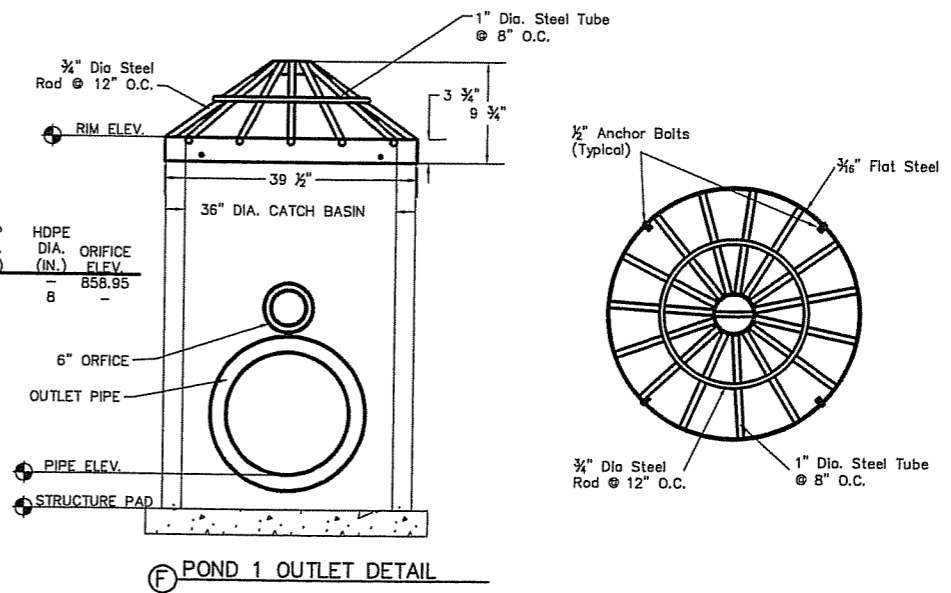
B SILT FENCE
NOT TO SCALE





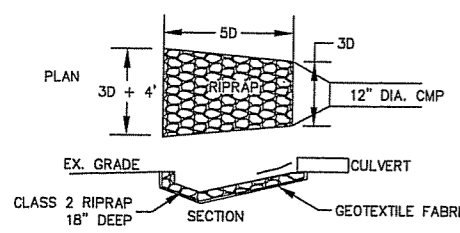
SECTION A-A
BIORETENTION AREA
SCALE: 1"=40' HOR. 1"=5' VERT. (11"x17")
1"=20' HOR. 1"=2.5' VERT. (22"x34")

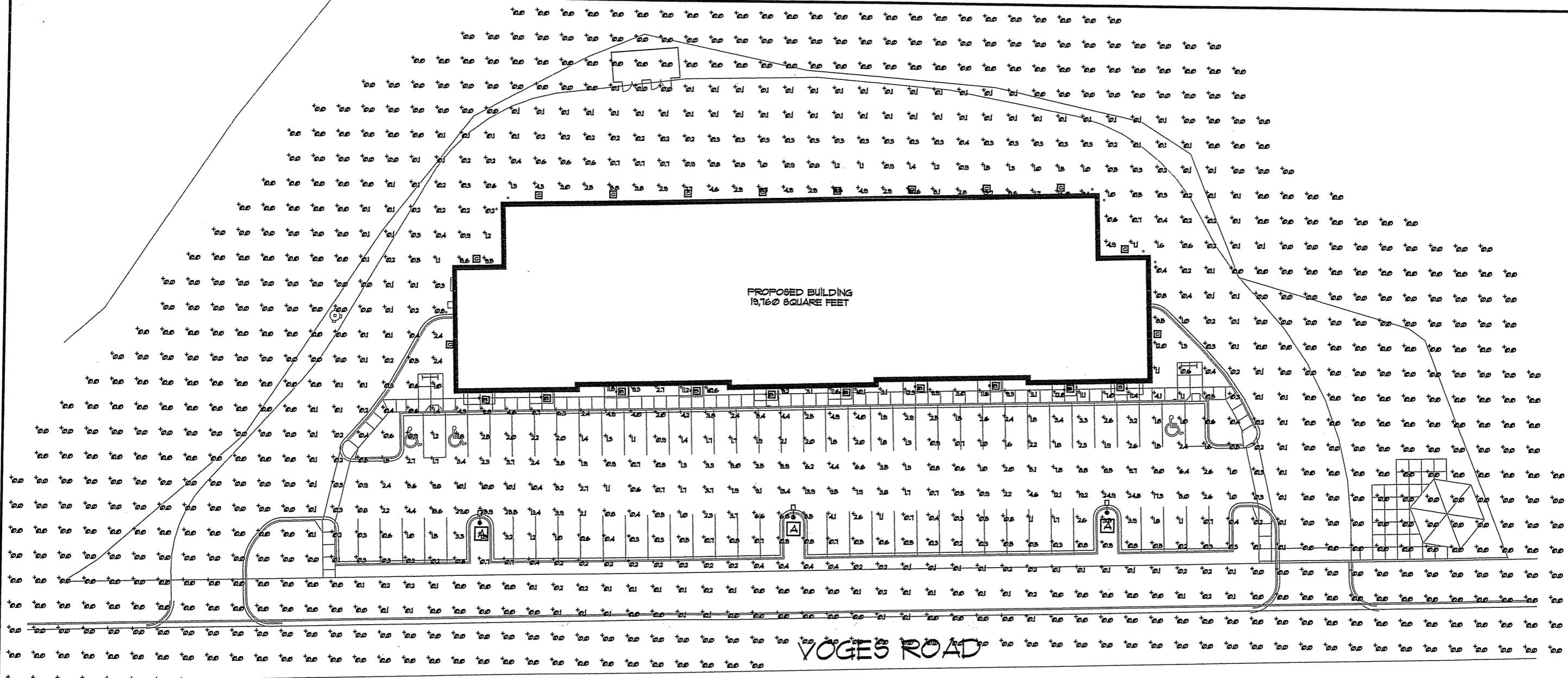
STRUCTURE	RIM ELEV. (FEET)	PIPE ELEV. (FEET)	STRUCTURE PAD (FEET)	CATCH BASIN DIA. (FEET)	RCP DIA. (IN.)	HDPE DIA. (IN.)	ORIFICE ELEV.
9	860.00	858.20	857.70	3	12	-	858.95
10	859.50	858.30	857.80	3	-	-	-



- NOTES:**
- EACH GATE IS WIRE BRUSHED AND CLEANED THOROUGHLY PRIOR TO PAINTING
 - EACH COAT IS AN OVERALL COAT EACH COAT IS ALLOWED TO DRY FOR 24 HOURS MIN.
 - FIRST COAT: RUST-OLEUM X-60 RED BARE METAL PRIMER OR EQUAL
 - SECOND COAT: RUST-OLEUM 960 ZINC CHROMATE PRIMER OR EQUAL
 - THIRD COAT: RUST-OLEUM 1282 HIGH GLOSS AND METALLIC FINISH OR EQUAL
 - GALVANIZED AND EPOXY COATED GATES ALSO AVAILABLE AS SPECIFIED
 - PIPE GATES ARE ALSO AVAILABLE FOR APRON ENDWALLS

- NOTES:**
- ENGINEERED SOIL SHALL CONSIST OF 40% SILICA SAND, 20% TOPSOIL, AND 40% COMPOST. SOILS BENEATH THE ABOVE SOIL STRUCTURE SHALL BE UNDERCUT AS NEEDED TO REACH A PERMEABLE LAYER.
 - INFLTRATION AREA SHALL BE GRADED AND INSTALLED AFTER SITE IS SEEDED AND VEGETATION IS ESTABLISHED. INFLTRATION AREA SHALL BE PLANTED WITH WATER TOLERANT SPECIES.





PROPOSED BUILDING
19,160 SQUARE FEET

YOGES ROAD

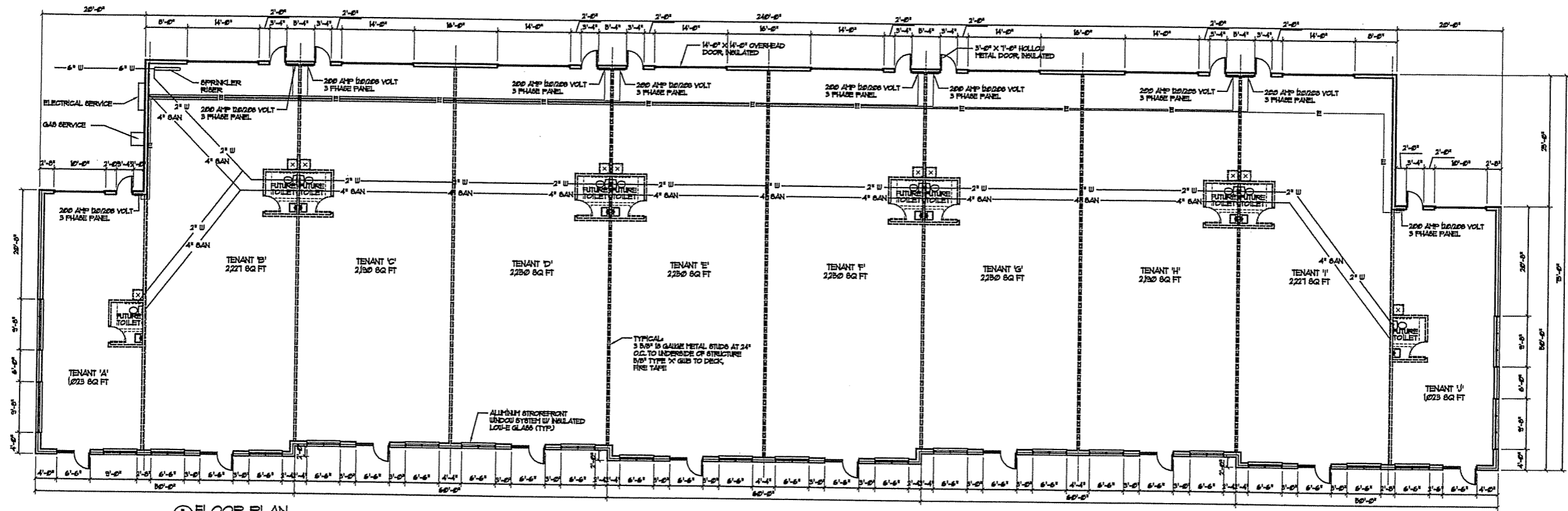
1 PHOTOMETRICS PLAN
C-17 SCALE: 1" = 20'



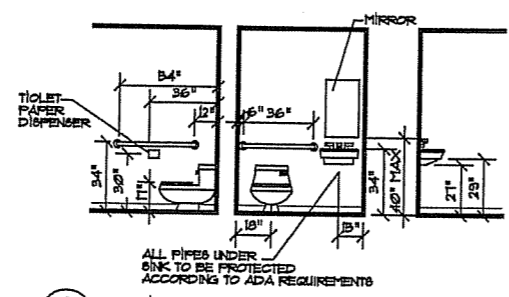
- LIGHT FIXTURE KEY**
- 200W MH SINGLE HEAD PARKING LOT LIGHT ON 8" X 28" POLE ON 2'-0" CONCRETE BASE, MODEL 84V442-1 BEL-AVVA28 (21'-0" FROM GRADE)
 - 100W MH RECESSED CAN LIGHT FIXTURE (11'-4" FROM GRADE) MODEL #RT102 WITH MODEL #RTR1
 - 100W MH WALL-PAC WITH DEEP SHIELDING, RLD CATALOG# EB407-D (8'-0" FROM GRADE)

COPYRIGHTED DRAWING
THIS DOCUMENT OR THE INFORMATION
HEREIN IS NOT TO BE REPRODUCED
COPYRIGHTED, LEND OR DISCLOSED
WITHOUT IN WRITING OR PART THEREOF
AUTHORIZED BY TJK DESIGN BUILD

PROPOSED FACILITY FOR
**MARSH AND
YOGES ROAD**
MADISON, WISCONSIN



1 FLOOR PLAN
SCALE: 1/4" = 1'-0"



2 TYPICAL RESTROOM ELEVATIONS
SCALE: 1/4" = 1'-0"

GENERAL NOTES

TYPICAL EXTERIOR WALL MASONRY OR BRICK VENEER (SEE ELEVATIONS) 1" AIR SPACE, AIR INFILTRATION BARRIER, 1/2" GIBB SHEATHING, 2 x 6 WOOD STUDS AT 16" O.C. WITH R-15 PERFORMALAG BATT INSULATION IN STUD CAVITIES, VAPOR BARRIER, 5/8" GYPSUM WALLBOARD TO 10'-0", FINISH TO 10'-0" READY FOR PAINT

TYPICAL TENANT DIVIDING WALL 3 5/8" 20 GAUGE STEEL STUDS AT 24" O.C. FULL HEIGHT TO DECK WITH SOUND ATTENUATION BLANKETS IN STUD CAVITIES AND 5/8" GYPSUM WALL BOARD ON BOTH SIDES TO STRUCTURE (UNLESS NOTED OTHERWISE) TAPE AND FINISH TO 10'-0" READY FOR PAINT

- MASON TO USE COLORED MORTAR TO MATCH ADJACENT BLOCK COLOR. VERIFY COLOR WITH ARCHITECT PRIOR TO INSTALLATION.
- ALL GLAZING WITHIN A 2'-0" ARC OR EITHER VERTICAL EDGE OF THE DOOR IN A CLOSED POSITION AND WHERE THE BOTTOM EXPOSED EDGE OF THE GLAZING IS LESS THAN 8'-0" ABOVE THE WALKING SURFACE ARE TO BE TEMPERED SAFETY GLASS (TYPICAL).
- ELECTRICIAN TO PROVIDE A 60A CIRCUIT WITH PHOTO CELL ON / TYP. OFF WIRED TO THE INDIVIDUAL SUITE PANELS. JUNCTION BOX FOR 60A AND LIGHTING TO BE FLUSH MOUNTED ON BUILDING. (NOT SURFACE MOUNTED) (U) PER FACADE, (D) TOTAL.
- EXIT SIGNS SHALL BE ILLUMINATED AT ALL TIMES. ENSURE CONTINUED ILLUMINATION FOR A DURATION OF NOT LESS THAN 90 MINUTES IN CASE OF PRIMARY POWER LOSS. EXIT SIGNS SHALL BE CONNECTED TO AN EMERGENCY ELECTRICAL SYSTEM PROVIDED FROM STORAGE BATTERIES.
- PROVIDE AN EMERGENCY ILLUMINATION POWER ALONG EGRESS PATHS IN ACCORDANCE W/ ICC ELECTRICAL CODE. ILLUMINATION IS TO LAST FOR DURATION OF NOT LESS THAN 90 MINUTES AND SHALL CONSIST OF STORAGE BATTERIES (INTERIOR AND EXTERIOR).
- ELECTRIC CONTRACTOR TO PROVIDE DUPLEX OUTLETS BASED ON ONE OUTLET PER 60 SQ. FT.
- ELECTRIC CONTRACTOR TO PROVIDE PRISMATIC LENS, FLUORESCENT, 2 TUBE, LAY-IN LIGHT FIXTURES BASED ON 1 FIXTURE/60 SQ. FT.
- PROVIDE AND INSTALL STANDARD 2 x 4 HEMLOCK CEILING TILE IN STANDARD GRID AT 10'-0"
- PROVIDE AND INSTALL DUCTWORK, FLEX AND DIFFUSERS INTO CEILING GRID FOR STANDARD "WHITE-BOX" VOLUME 8 TON HORIZONTAL SPLIT HVAC UNIT WITH REMOTE CONDENSER.

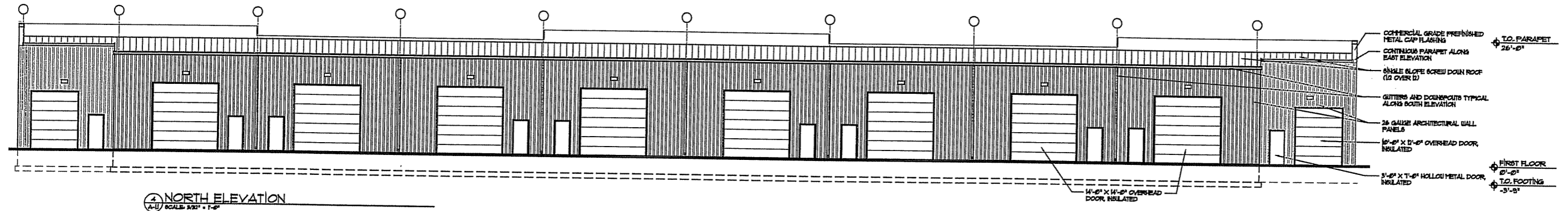
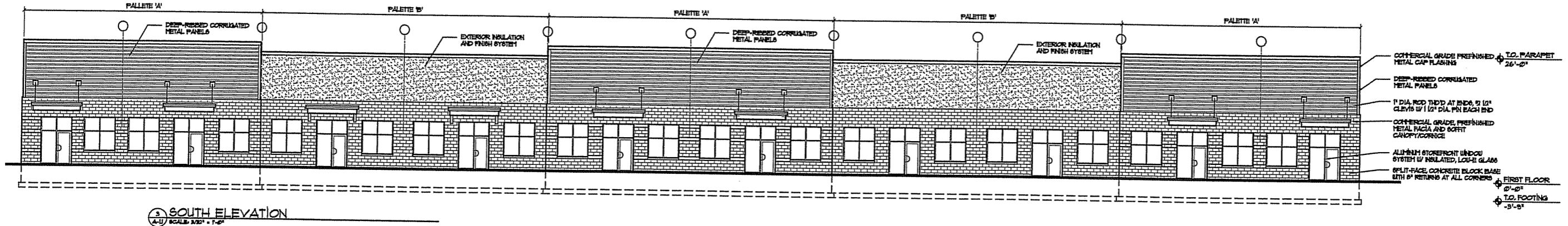
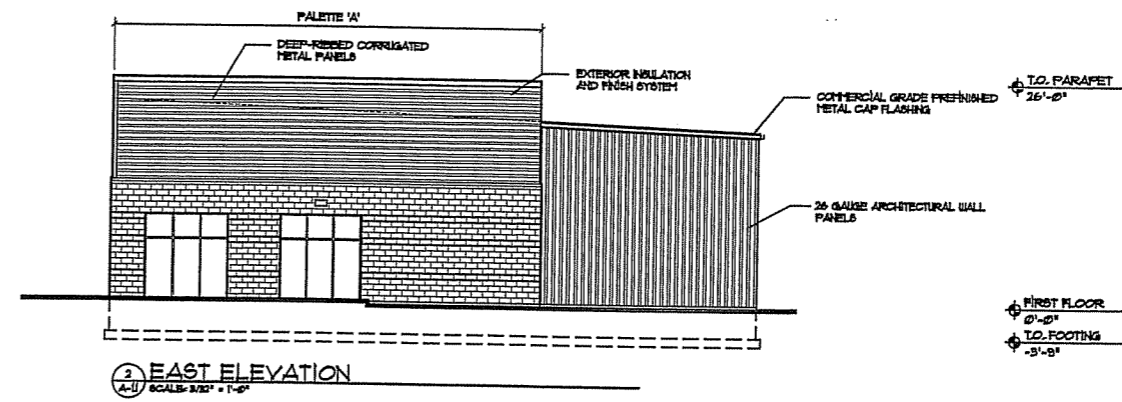
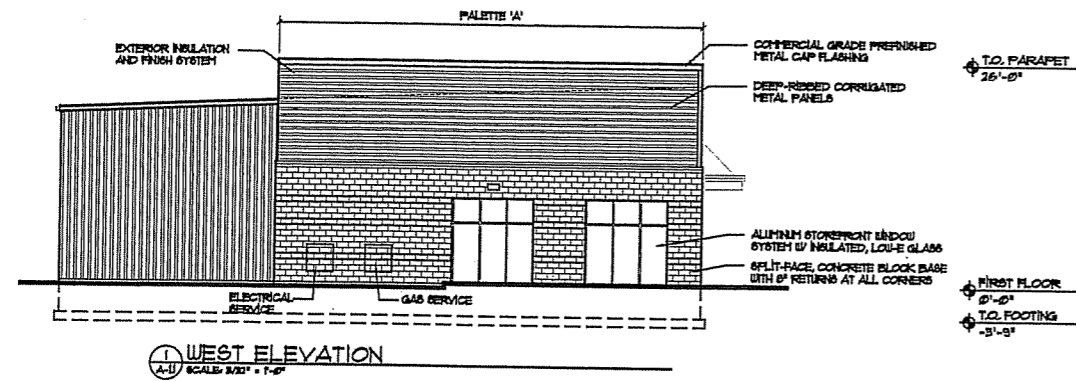
- TOILET ROOM NOTE:**
- BATHROOM LIGHTING TO BE A SINGLE 2x4 PRISMATIC LAY-IN LIGHT FIXTURE
 - BATHROOM FLOORING TO BE V.C.T. AND 4" VINYL COVE BASE
 - BATHROOM DOORS TO BE 3'-0" x 7'-0" SOLID CORE DOORS IN HOLLOW METAL FRAME WITH "A" SERIES LOCKSET. (DOORS TO BE STAINED / FINISHED TO BE PAINTED)
 - BATHROOMS TO HAVE EXHAUST FANS VENTED THRU ROOF BY HVAC CONTRACTOR
 - PLUMBING CONTRACTOR TO PROVIDE (U) - 6 GALLON ELECTRIC WATER HEATER MOUNTED ABOVE ROOM ON PL-TWOOD PLATFORM PER TOILET ROOM
 - 2 x 4 VINYL COATED SHEATHROCK CEILING AT 8'-0"

COPYRIGHTED DRAWING
THIS DOCUMENT OR THE INFORMATION HEREIN IS NOT TO BE REPRODUCED, DISTRIBUTED, USED OR DISCLOSED EITHER IN WHOLE OR PART UNLESS AUTHORIZED BY TJK DESIGN BUILD.

PROPOSED FACILITY FOR
5402 YOGES ROAD
MADISON, WISCONSIN

A-11

5.16.07



MATERIAL LIST - PALETTE 'A'

BLOCK ACCENT:	TRENDWYTH INDUSTRIES, TRENDSONE, 'BUTTERFIELD', 6" WITH RETURNS AT CORNERS GROUND FACE
BLOCK FIELD:	TRENDWYTH INDUSTRIES, TRENDSONE, 'BRICK RED', 6" WITH RETURNS AT CORNERS
PRECAST SILL:	EDWARDS CAST STONE, 25, 'TAN'
EXPANDABLE ENDWALL:	STAR BUILDING SYSTEMS, 'ASH GRAY'
CORRUGATED METAL PANEL:	3/4" GALVANIZED
ALUMINUM STOREFRONT AND WINDOW SYSTEM:	KALINEER 'SEA WOLF' WITH INSULATED LOW E GLASS
BENT METAL / CAP FLASHING:	PAC-CLAD, 'CHARCOAL'
CANOPY:	PAC-CLAD, 'HARTFORD GREEN'

MATERIAL LIST - PALETTE 'B'

BLOCK FIELD:	TRENDWYTH INDUSTRIES, TRENDSONE, 'BUTTERFIELD', 6" WITH RETURNS AT CORNERS
EXTERIOR INSULATION AND FINISH SYSTEM:	DRYVIT, 236, 'RED CLAY', 6/16" FINE
EXPANDABLE ENDWALL:	STAR BUILDING SYSTEMS, 'ASH GRAY'
PRECAST SILL:	EDWARDS CAST STONE, 25, 'TAN'
ALUMINUM STOREFRONT AND WINDOW SYSTEM:	KALINEER 'REDWOOD' WITH INSULATED LOW E GLASS
CANOPY:	PAC-CLAD, 'HARTFORD GREEN'

COPYRIGHTED DRAWING
THIS DOCUMENT OR THE INFORMATION
HEREIN IS NOT TO BE REPRODUCED,
DISTRIBUTED, USED OR DISCLOSED
WITHOUT WRITING OR PARTIAL WRITING
AUTHORIZED BY TJK DESIGN/BUILD

PROPOSED FACILITY FOR:
5402 YOGES ROAD
MADISON, WISCONSIN