

PROPOSED FACILITY FOR:

TRANE OFFICE

5402 VOGES ROAD
Madison, Wisconsin

TJK TJK Design Build
634 W. Main
Madison, WI 53703
DESIGNBUILD 608-257-1090 FAX 608-257-1092



SITE LOCATION MAP

INDEX OF DRAWINGS:

- C-1.1 PROPOSED SITE PLAN
- C-1.2 EXISTING/DEMO SITE PLAN
- C-1.3 PROPOSED GRADING AND EROSION CONTROL PLAN
- C-1.4 PROPOSED GRADING AND UTILITY PLAN
- C-1.5 LANDSCAPE PLAN
- C-1.6 PHOTOMETRIC PLAN
- C-2.0 SITE WET POND DETAILS
- C-2.1 SITE DETAILS
- C-2.2 SITE DETAILS
- A-1.1 FLOOR PLAN
- A-1.2 ROOF PLAN
- A-2.1 EXTERIOR ELEVATIONS
- A-4.1 CROSS SECTIONS
- A-4.2 TYPICAL WALL SECTIONS

PARKING LOT PLAN SITE INFORMATION BLOCK

8405 VOGES ROAD MADISON, WISCONSIN	
SITE ADDRESS (TOTAL) 221,000 SQ FT ± 6.82 ACRES	
NUMBER OF BUILDING STORIES (ABOVE GRADE) 1	
BUILDING HEIGHT 14'-0" EAVE (TYP)	
TYPE OF CONSTRUCTION (NEW STRUCTURES OR ADDITIONS) 30, NOT SPRINKLED	
TOTAL SQUARE FOOTAGE OF BUILDING 10,350 SQ FT	
USE OF PROPERTY OFFICE / WAREHOUSE	
GROSS SQUARE FEET OF OFFICE 5,475 SQ FT	
GROSS SQUARE FEET OF RETAIL AREA N/A	
NUMBER OF EMPLOYEES IN WAREHOUSE 1075 SQ FT	
NUMBER OF EMPLOYEES ON PRODUCTION AREA N/A	
CAPACITY OF RESTAURANT / PLACE OF ASSEMBLY N/A	
NUMBER OF BICYCLE STALLS SHOWN 6	
NUMBER OF PARKING STALLS (TOTAL SITE) 50	
STALLS REQUIRED (1000)	32
STALLS SHOWN	48
ACCESSIBLE	2
TOTAL	50

NUMBER OF TREES SHOWN SEE LANDSCAPE PLAN

SITE INFORMATION	
SITE SIZE	221,000 SQ FT
BLDG AREA	10,350 SQ FT
PARKING AND WALKS	22,780 SQ FT
FLOOR AREA RATIO	3.95%
IMPERVIOUS SURFACE RATIO	12.2%
PARKING RATIO	1 STALL/300 SQ FT

TO OBTAIN LOCATIONS OF PARTICIPANTS UNDERGROUND FACILITIES BEFORE YOU DIG IN WISCONSIN



CALL DIGGERS HOTLINE 1-800-242-4801
TOLL FREE
WIS STATUTE 10.07(18)(14)
REQUIRES MIN. 3 WORK DAYS NOTICE BEFORE YOU EXCAVATE



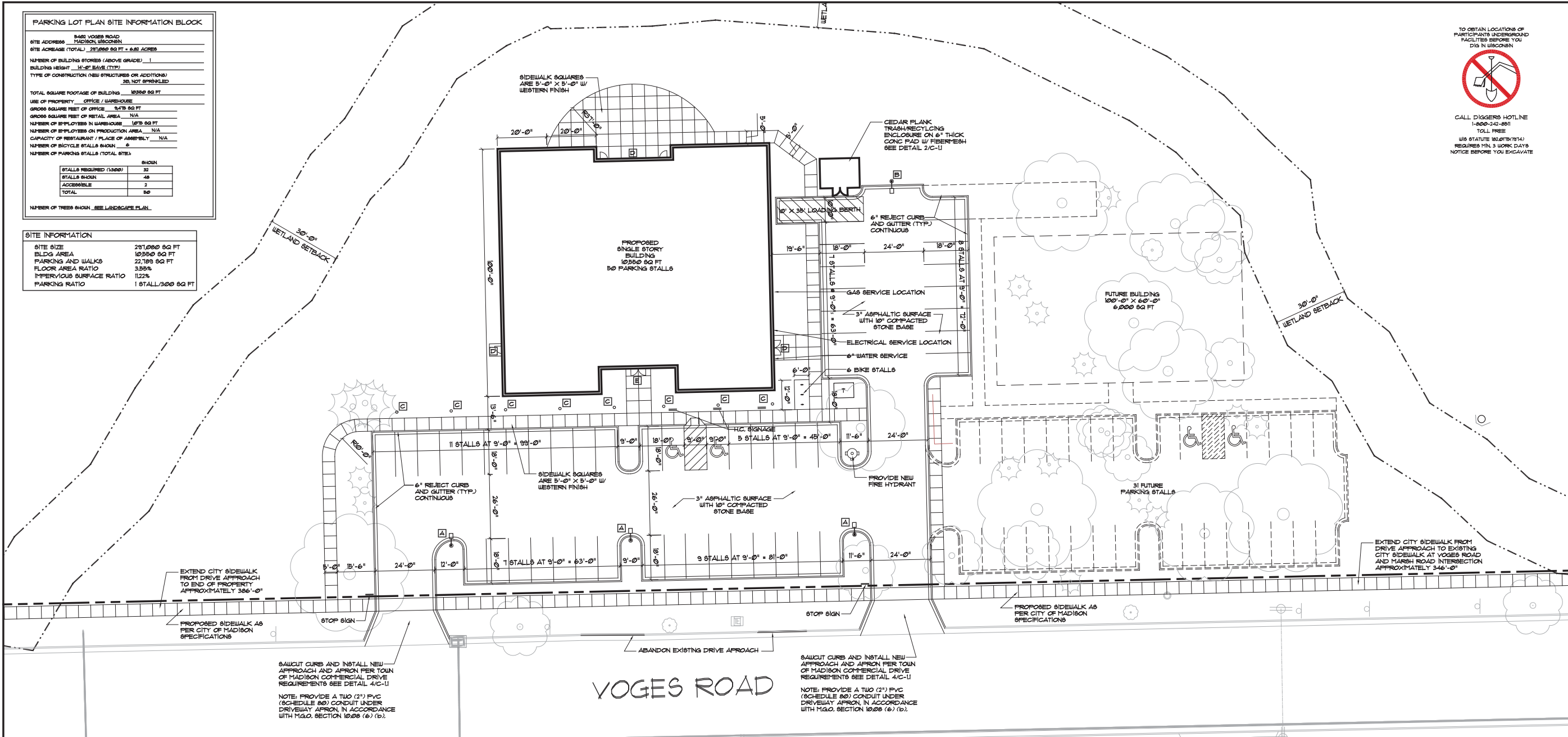
634 West Main Street
Madison, WI 53703
608-251-1090
FAX 608-251-1092

REV DATE

COPYRIGHTED DRAWING
© 2011 TJK Design Build, Inc. ALL RIGHTS RESERVED. NEITHER THIS DOCUMENT NOR THE INFORMATION HEREIN MAY BE REPRODUCED, DISTRIBUTED, USED OR DISCLOSED IN WHOLE OR IN PART, UNLESS EXPRESSLY AUTHORIZED IN WRITING BY TJK DESIGN BUILD, INC.

PROPOSED FACILITY FOR:
TRANE
5402 VOGES ROAD
MCFARLAND, WISCONSIN

C-1.1
9.3.13



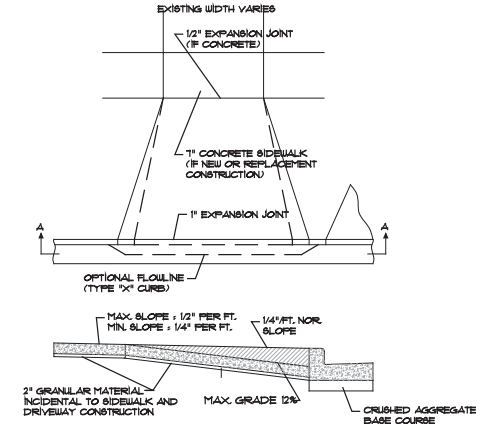
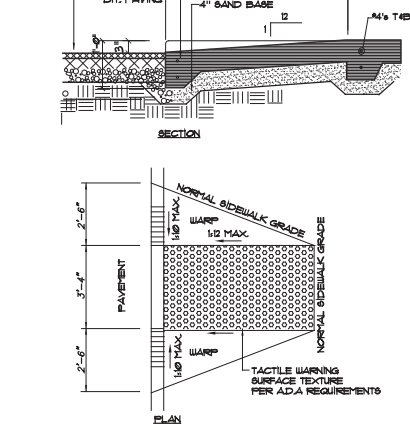
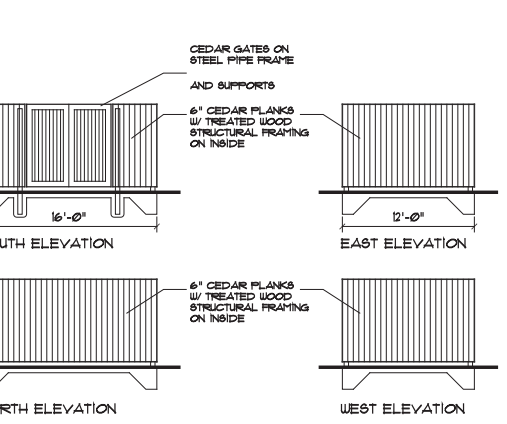
1 SITE PLAN
SCALE: 1" = 20'

LEGEND:

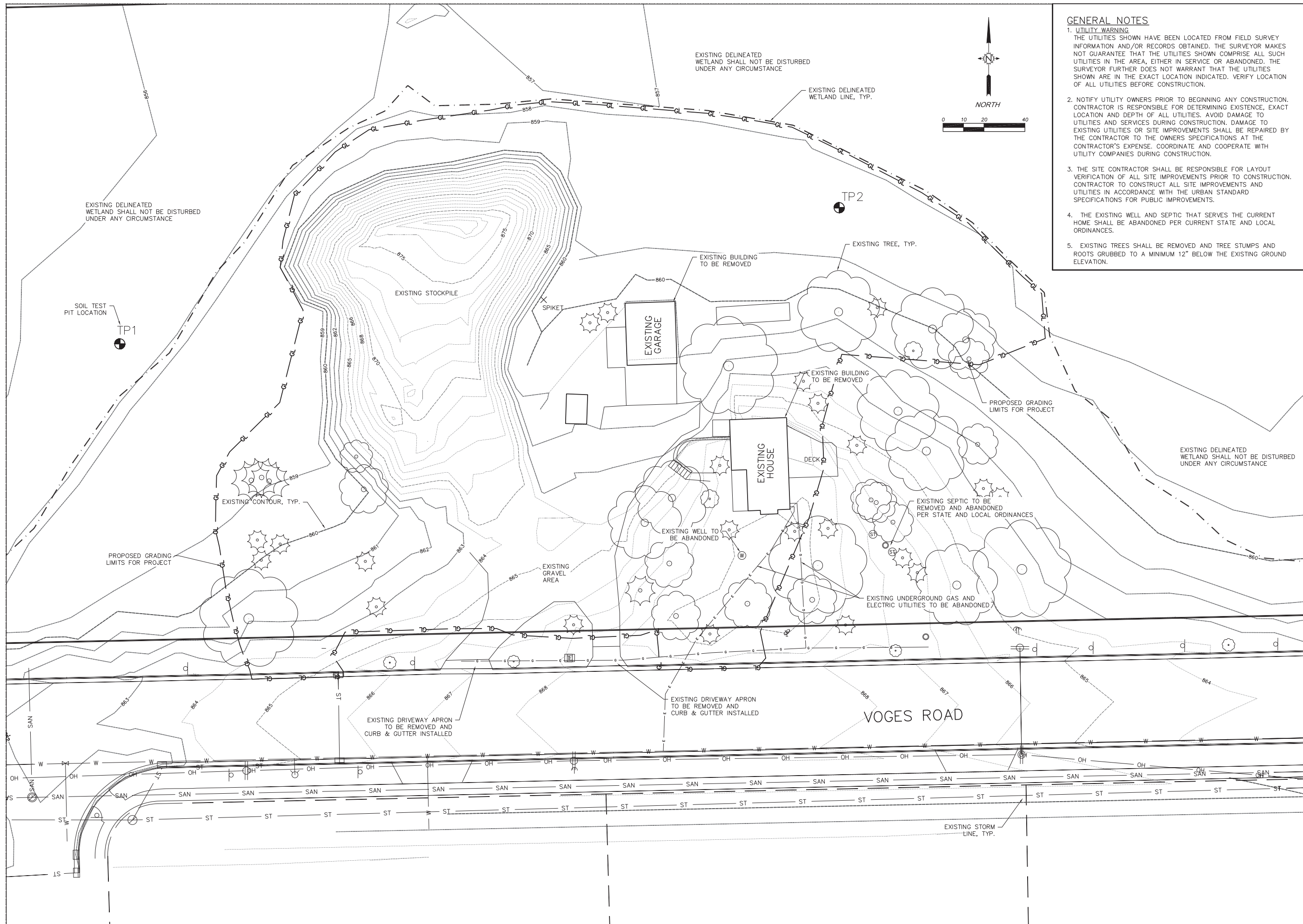
○	PROPERTY CORNER
—	PROPERTY LINE
—S—	SANITARY SEWER
—ST—	STORM SEWER
—W—	WATER MAIN
⊕	FIRE HYDRANT
⊙	UTILITY POLE
⊙	UTILITY POLE W/ LIGHT
○	MANHOLE
○	WATER VALVE
○	CURB INLET
○	STORM SEWER ACCESS COVER
○	SPOT ELEVATION
○	MONITORING WELL
▨	EXISTING BUILDING

LIGHT FIXTURE KEY

A	COOPER LIGHTING INDUSTRIES, LUMARK 250W TYP SINGLE HEAD PARKING LOT LIGHT ON 5' X 18' POLE ON 2'-0" CONC. PIER, MODEL #FP-TR-8L-250-208V-BZ (20'-0" FROM GRADE)
B	COOPER LIGHTING INDUSTRIES, LUMARK 250W TYP SINGLE HEAD PARKING LOT LIGHT ON 5' X 18' POLE ON 2'-0" CONC. PIER, MODEL #FP-TR-4P-250-208V-BZ (20'-0" FROM GRADE)
C	COOPER LIGHTING INDUSTRIES, MCGRAW-EDISON, 36" 10W TYP LIGHT BOLLARD (3'-0" FROM GRADE), MODEL #BRL-36-10-MP-208-BZ
D	COOPER LIGHTING INDUSTRIES, MCGRAW-EDISON, 10W TYP WALL-PAC LIGHT FIXTURE (10'-0" FROM GRADE), MODEL #10C-10-MP-208-25-BZ
E	COOPER LIGHTING INDUSTRIES, HALO 100W TYP RECESSED CAN LIGHT FIXTURE (9'-4" FROM GRADE), MODEL #PD6V-100E

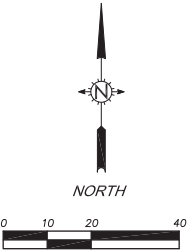


- GENERAL NOTES:**
- ALL PAINT STRIPPING SHALL BE 4" WIDE, YELLOW
 - HC CURB CUTS AND RAMPS PER ADA SEC. 411 MAX. SLOPE TO BE 1:2 MIN. WIDTH TO BE 36" FLARE 60:20 1" EACH SIDE WITH MAX. SLOPE OF 1:10 AREA TO BE COLORED CONCRETE WITH TEXTURE IN COMPLIANCE WITH ADA REQUIREMENTS
 - ALL DIMENSIONS ARE FROM FACE OF CONCRETE WALL, FACE OF CURB OR CENTER OF PROPERTY LINE
 - BITUMINOUS PAVING IS 3" SURFACE COURSE ON 10" COMPACTED STONE BASE
 - ALL EXTERIOR CONCRETE SIDEWALKS TO BE 6" BAG MIX WITH WESTERN FINISH 4" THICK W/ W/FP REINFORCING ON 6" COMPACTED FILL
 - WATER SERVICE MATERIAL SHALL BE CL 82 D.I.
 - SEWER AND WATER CONSTRUCTION SHALL BE COMPLETED IN ACCORDANCE WITH THE CITY OF MADISON STANDARD SPECIFICATION FOR PUBLIC WORKS CONSTRUCTION
 - FIRE PROTECTION SHALL BE PROVIDED IN ACCORDANCE WITH THE REQUIREMENTS OF THE FIRE DEPARTMENT
 - SIDEWALKS AND DRIVEWAY APRON CONSTRUCTION WITHIN THE PUBLIC RIGHTS OF WAY SHALL BE CONSTRUCTED IN ACCORDANCE WITH THE CITY OF MADISON STANDARD SPECIFICATIONS FOR PUBLIC WORKS CONSTRUCTION
 - DURING CONSTRUCTION REMOVE CASTING GRATE ON ALL CATCH BASINS INSTALL WATER PERMEABLE MEMBRANE FOR SILT INFILTRATION PROTECTION, AND REINSTALL CASTING GRATE. SECURE MEMBRANE IN THE FLOW LINE WITH 2X4 MATERIAL, MINIMUM
 - EXISTING WATERMAN VALVES SHALL BE MARKED AND PROTECTED FOR DURATION OF CONSTRUCTION
 - SLOPES GREATER THAN 3:1 SHALL BE LINED WITH EROSION MATTING
 - TRACKED MATERIAL SHALL BE COLLECTED BY THE GENERAL CONTRACTOR AT THE END OF EACH WORKING DAY OR AS REQUIRED BY THE CITY
 - PROVIDE KNOX BOX FOR THE FIRE DEPARTMENT. CO-ORDINATE LOCATION WITH FIRE DEPARTMENT PRIOR TO INSTALLATION
 - ALL "STOP" SIGNS ARE TO BE INSTALLED AT A HEIGHT OF 7 FEET AT ALL DRIVEWAY APPROACHES BEHIND THE PROPERTY LINE
 - THE PUBLIC WORKS DEPARTMENT SHALL BE NOTIFIED A MINIMUM OF 48 HOURS BEFORE THE START OF WORK IN THE RIGHT OF WAY OR UTILITY CONNECTIONS



GENERAL NOTES

1. **UTILITY WARNING**
 THE UTILITIES SHOWN HAVE BEEN LOCATED FROM FIELD SURVEY INFORMATION AND/OR RECORDS OBTAINED. THE SURVEYOR MAKES NOT GUARANTEE THAT THE UTILITIES SHOWN COMPRISE ALL SUCH UTILITIES IN THE AREA, EITHER IN SERVICE OR ABANDONED. THE SURVEYOR FURTHER DOES NOT WARRANT THAT THE UTILITIES SHOWN ARE IN THE EXACT LOCATION INDICATED. VERIFY LOCATION OF ALL UTILITIES BEFORE CONSTRUCTION.
2. NOTIFY UTILITY OWNERS PRIOR TO BEGINNING ANY CONSTRUCTION. CONTRACTOR IS RESPONSIBLE FOR DETERMINING EXISTENCE, EXACT LOCATION AND DEPTH OF ALL UTILITIES. AVOID DAMAGE TO UTILITIES AND SERVICES DURING CONSTRUCTION. DAMAGE TO EXISTING UTILITIES OR SITE IMPROVEMENTS SHALL BE REPAIRED BY THE CONTRACTOR TO THE OWNERS SPECIFICATIONS AT THE CONTRACTOR'S EXPENSE. COORDINATE AND COOPERATE WITH UTILITY COMPANIES DURING CONSTRUCTION.
3. THE SITE CONTRACTOR SHALL BE RESPONSIBLE FOR LAYOUT VERIFICATION OF ALL SITE IMPROVEMENTS PRIOR TO CONSTRUCTION. CONTRACTOR TO CONSTRUCT ALL SITE IMPROVEMENTS AND UTILITIES IN ACCORDANCE WITH THE URBAN STANDARD SPECIFICATIONS FOR PUBLIC IMPROVEMENTS.
4. THE EXISTING WELL AND SEPTIC THAT SERVES THE CURRENT HOME SHALL BE ABANDONED PER CURRENT STATE AND LOCAL ORDINANCES.
5. EXISTING TREES SHALL BE REMOVED AND TREE STUMPS AND ROOTS GRUBBED TO A MINIMUM 12" BELOW THE EXISTING GROUND ELEVATION.



634 West Main Street
 Madison, WI 53703
 608-257-1090
 FAX 608-257-1092

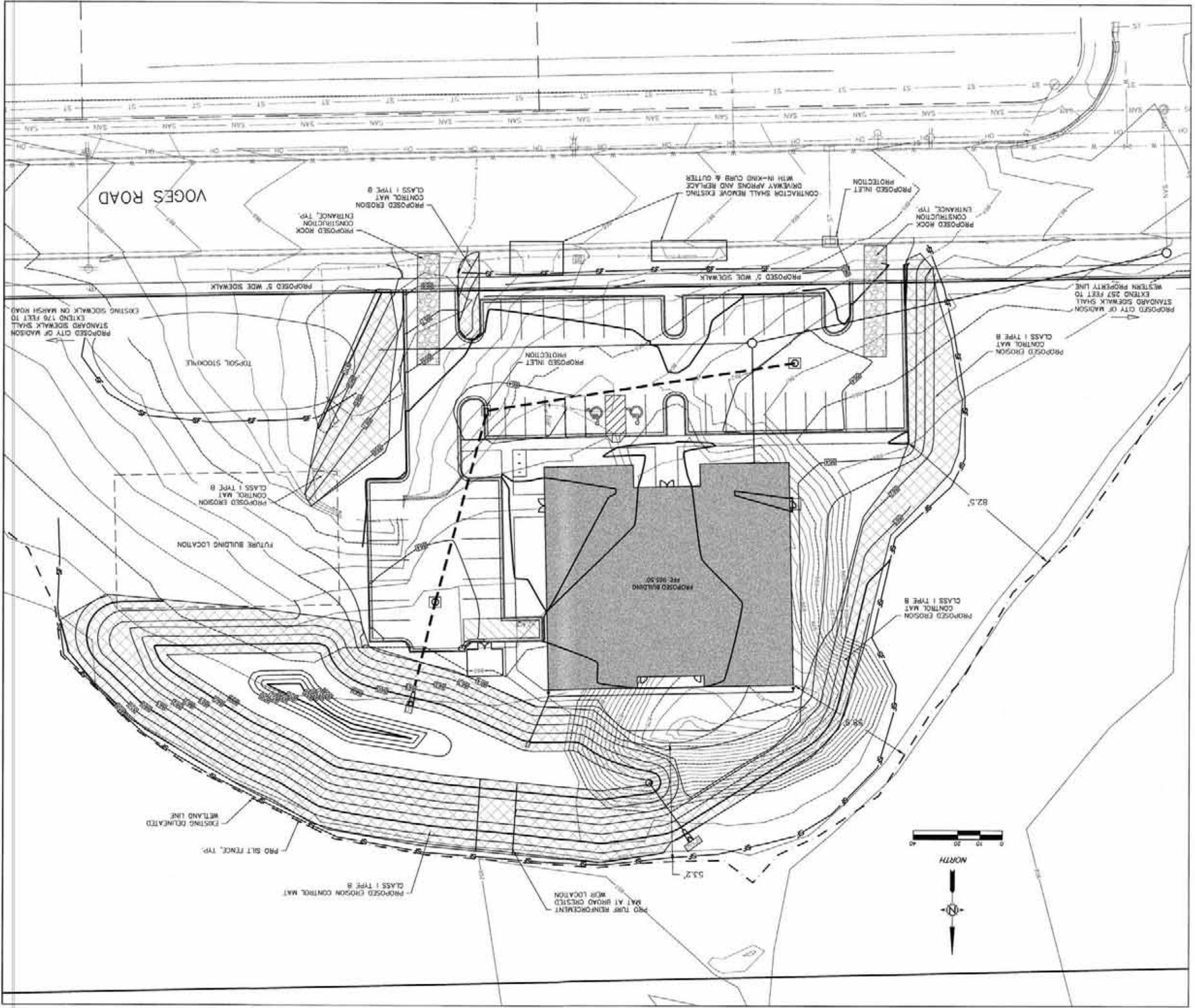


COPYRIGHTED DRAWING
 THIS DOCUMENT OR THE INFORMATION HEREIN IS NOT TO BE REPRODUCED, DISTRIBUTED, USED OR DISCLOSED EITHER IN WHOLE OR PART UNLESS AUTHORIZED BY TJK DESIGN BUILD

PROPOSED FACILITY FOR:
 TRANE
 EXISTING SITE PLAN
 5402 VOGES ROAD
 CITY OF MADISON, DANE COUNTY WISCONSIN

C-1.2

9.3.13



GENERAL NOTES:

THE WETLAND SHALL NOT BE DISTURBED DURING CONSTRUCTION ACTIVITIES. WETLAND LINE SHALL BE STAKED PRIOR TO CONSTRUCTION AND SILT FENCE INSTALLED 12' INSIDE THE WETLAND LINE.

STONE CONSTRUCTION ENTRANCE SHALL BE INSTALLED PRIOR TO ANY GRADING OPERATIONS AND MAINTAINED UNTIL GRAVEL BASE IS INSTALLED.

SILT FENCE AND ALL OTHER EROSION CONTROL MEASURES SHALL BE INSTALLED PRIOR TO ANY GRADING OPERATIONS AND MAINTAINED THROUGHOUT THE CONSTRUCTION PHASE OF THIS PROJECT.

TRACKED MATERIAL TO ADJACENT STREETS SHALL BE COLLECTED AT THE END OF EACH WORK DAY OR AS REQUIRED BY THE CITY OF MADISON.

CONTRACTOR SHALL NOTIFY THE CITY OF MADISON BUILDING INSPECTOR TWO (2) WORKING DAYS PRIOR TO ANY SOIL DISTURBING ACTIVITY.

TEMPORARY STOCKPILES SHALL BE STABILIZED IF NOT REMOVED WITHIN 10-DAYS. PERMETER CONTROL ON THE DOWNSTREAM SIDE SHALL BE IN-PLACE AT ALL TIMES. (SILT FENCE OR APPROVED EQUIV.)

CONTRACTOR TO MINIMIZE AREAS OF EXPOSED SOIL AT ALL TIMES.

AREAS WITH SLOPES 4:1 OR GREATER AND ALL INTERIOR FOND BANK SLOPES SHALL BE STABILIZED WITH CLASS I TYPE B EROSION CONTROL MATTING.

MULCH SHALL BE PUNCHED INTO THE SOIL TO A MINIMUM DEPTH OF 2-INCHES USING A MULCH TILER WHILE TRAVELING ON THE CONTOUR.

STORMWATER POND SHALL BE EXCAVATED AND USED AS SEEDING TRAPS DURING CONSTRUCTION WORK.

COMPLETION OF CONSTRUCTION AND SITE STABILIZATION THE BASINS SHALL BE OVER-EXCAVATED 3 FEET MINIMUM.

ALL AREAS WHICH ARE NOT PAVED SHALL RECEIVE A MINIMUM OF 4" TOPSOIL PRIOR TO SEEDING.

GRASS AREAS SHALL RECEIVE FERTILIZER, SEED, AND MULCH. SEED SHALL BE MIXTURE 40 IN ACCORDANCE WITH SECTION 630 OF D.O.T. SPECIFICATIONS AND SHALL BE APPLIED AT A RATE OF FOUR POUNDS PER 1,000 SQUARE FEET. FERTILIZER SHALL MEET THE REQUIREMENTS THAT FOLLOW: NITROGEN, NOT LESS THAN 16% PHOSPHORIC ACID, NOT LESS THAN 16% POTASH, NOT LESS THAN 8% FERTILIZER SHALL BE APPLIED AT THE RATE OF SEVEN POUNDS PER 1,000 SQUARE FEET.

MULCH SHOULD BE APPLIED SO THAT THE SOIL SURFACE IS UNIFORMLY COVERED. ACTUAL APPLICATION RATES MAY VARY DEPENDING UPON THE INDIVIDUAL SITE CHARACTERISTICS AND THE TYPE OF MULCH USED. MULCHING APPLICATION SHALL CONSIST OF STRAW AT A MIN. RATE OF 1.5 TONS PER ACRE. MULCH MUST BE CRUMPED.

RUNOFF OF WATER FROM FOUNDATION AREA DURING CONSTRUCTION SHALL NOT EXCEED A RATE OF 70 GALLONS PER MINUTE. SUMP PUMP SHALL BE PLACED ON A CLEAR STONE BEDDING AND A CLOTH/MESH SOCK SHALL BE PLACED ON THE OUTLET END OF THE PIPE TO CONTROL SEDIMENT LOSS.

FOR THE FIRST SIX WEEKS AFTER THE INITIAL STABILIZATION OF A DISTURBED AREA, PROVISIONS SHALL BE MADE FOR WATERING WHENEVER MORE THAN SEVEN DAYS OF DRY WEATHER ELAPSE.

EROSION AND SEDIMENT CONTROL MEASURES SHALL BE INSPECTED AND REPAIRED BY THE CONTRACTOR IF A PRECIPITATION EVENT OF 0.1" OR GREATER. ALL NECESSARY MAINTENANCE SHOULD FOLLOW THE INSPECTIONS WITHIN 24 HOURS.

DEVELOPER SHALL REPAIR/REPLACE ANY SIDEWALK, CURB OR PAVEMENT DAMAGED DURING CONSTRUCTION OR AS DEEMED NECESSARY BY THE CITY OF MADISON.

PROPOSED TURF REINFORCEMENT MATTING SHALL BE CLASS III TYPE B.

INLET PROTECTION SHALL BE INSTALLED ON ALL ONSITE AND OFFSITE CATCH BASINS AS SHOWN ON THE STANDARD DETAIL ON SHEETS.

STANDARD CITY OF MADISON SIDEWALK SHALL BE INSTALLED ON ENTIRE FRONTAGE OF PROJECT SITE FROM WEST PROPERTY LINE TO THE MARSH ROAD INTERSECTION. APPROXIMATELY 957'. LENGTH SHALL BE FIELD VERIFIED.

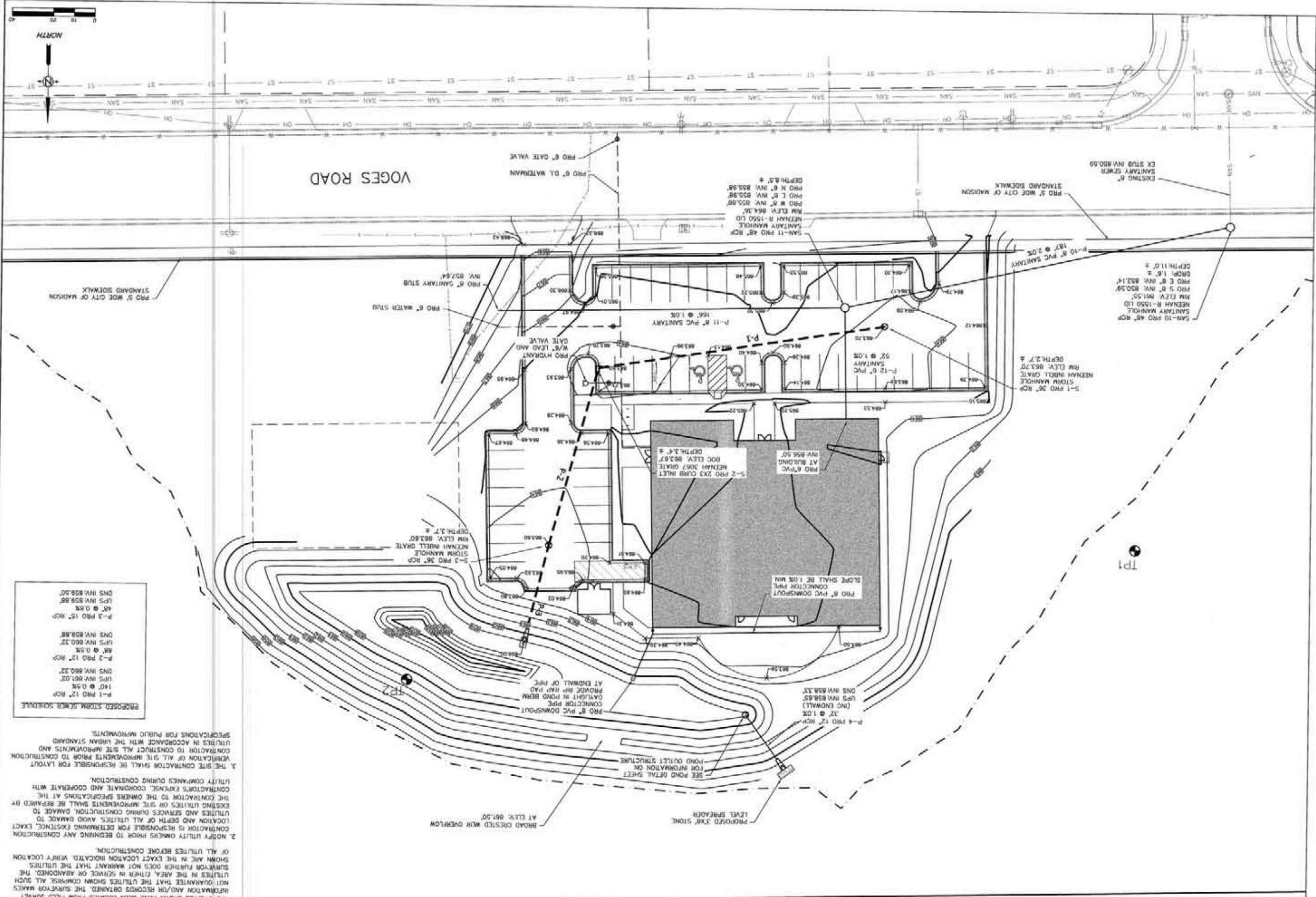
9.3.13
C-1.3

PROPOSED FACILITY FOR:
TRANE
PROPOSED GRADING & EROSION CONTROL PLAN
5402 VOGES ROAD
CITY OF MADISON, DANE COUNTY WISCONSIN

ENGINEERS AND PLANNERS
S
SNYDER & ASSOCIATES

634 West Main Street
Madison, WI 53703
608-257-1090
FAX 608-257-1092

DESIGNBUILT
TRK



GENERAL NOTES

1. UTILITIES SHOWN HAVE BEEN LOCATED FROM FIELD SURVEY INFORMATION AND/OR RECORDS OBTAINED. THE SURVEYOR MAKES NO GUARANTEE THAT THE UTILITIES SHOWN COMPRISE ALL SUCH UTILITIES IN THE AREA, OTHER THAN IN SERVICE OR ABANDONED. THE SURVEYOR FURTHER DOES NOT WARRANT THAT THE UTILITIES SHOWN ARE IN THE EXACT LOCATION INDICATED. VERIFY LOCATION OF ALL UTILITIES BEFORE CONSTRUCTION.
2. NOTIFY UTILITY OWNERS PRIOR TO BEGINNING ANY CONSTRUCTION. CONTRACTOR IS RESPONSIBLE FOR DETERMINING EXISTING, EXACT LOCATION AND DEPTH OF ALL UTILITIES. AVOID DAMAGE TO UTILITIES AND SERVICES DURING CONSTRUCTION. SHALL BE REPAIRED BY THE CONTRACTOR TO THE OWNERS SPECIFICATIONS AT THE CONTRACTOR'S EXPENSE. COORDINATE AND COOPERATE WITH UTILITY COMPANIES DURING CONSTRUCTION.
3. THE SITE CONTRACTOR SHALL BE RESPONSIBLE FOR LAYOUT, VERIFICATION OF ALL SITE IMPROVEMENTS PRIOR TO CONSTRUCTION. CONTRACTOR TO CONSTRUCT ALL SITE IMPROVEMENTS AND UTILITIES IN ACCORDANCE WITH THE URBAN STANDARD SPECIFICATIONS FOR PUBLIC IMPROVEMENTS.

PROPOSED STORM SEWER SCHEDULE

P-1 PRO 12" RCP	140' @ 0.5%	DNS INV. 860.32'
P-2 PRO 12" RCP	88' @ 0.5%	DNS INV. 859.88'
P-3 PRO 15" RCP	48' @ 0.8%	UPS INV. 859.86'
DNS INV. 859.50'		

PROPOSED FACILITY FOR:
TRANE
 PROPOSED GRADING & UTILITY PLAN
 5402 VOGES ROAD
 CITY OF MADISON, DANE COUNTY WISCONSIN

SNYDER & ASSOCIATES
 ENGINEERS AND PLANNERS

634 West Main Street
 Madison, WI 53703
 608-257-1090
 FAX 608-257-1092



C-1.4
 9.3.13

TO OBTAIN LOCATIONS OF PARTICIPANTS UNDERGROUND FACILITIES BEFORE YOU DIG IN WISCONSIN
 CALL DIGGERS HOTLINE 1-800-242-4981
 TOLL FREE
 WIS. STATUTE 18.07(1814)
 REQUIRES MIN. 3 WORK DAYS NOTICE BEFORE YOU EXCAVATE



634 West Main Street
 Madison, WI 53703
 608-251-1090
 FAX 608-251-1092

REV DATE

COPYRIGHTED DRAWING
 © 2011 TJK Design Build, Inc. ALL RIGHTS RESERVED. NEITHER THIS DOCUMENT NOR THE INFORMATION HEREIN MAY BE REPRODUCED, DISTRIBUTED, USED, OR DISCLOSED, IN WHOLE OR IN PART, UNLESS EXPRESSLY AUTHORIZED IN WRITING BY TJK DESIGN BUILD, INC.

PROPOSED FACILITY FOR:
TRANE
 5402 VOGES ROAD
 MADISON, WISCONSIN

C-15

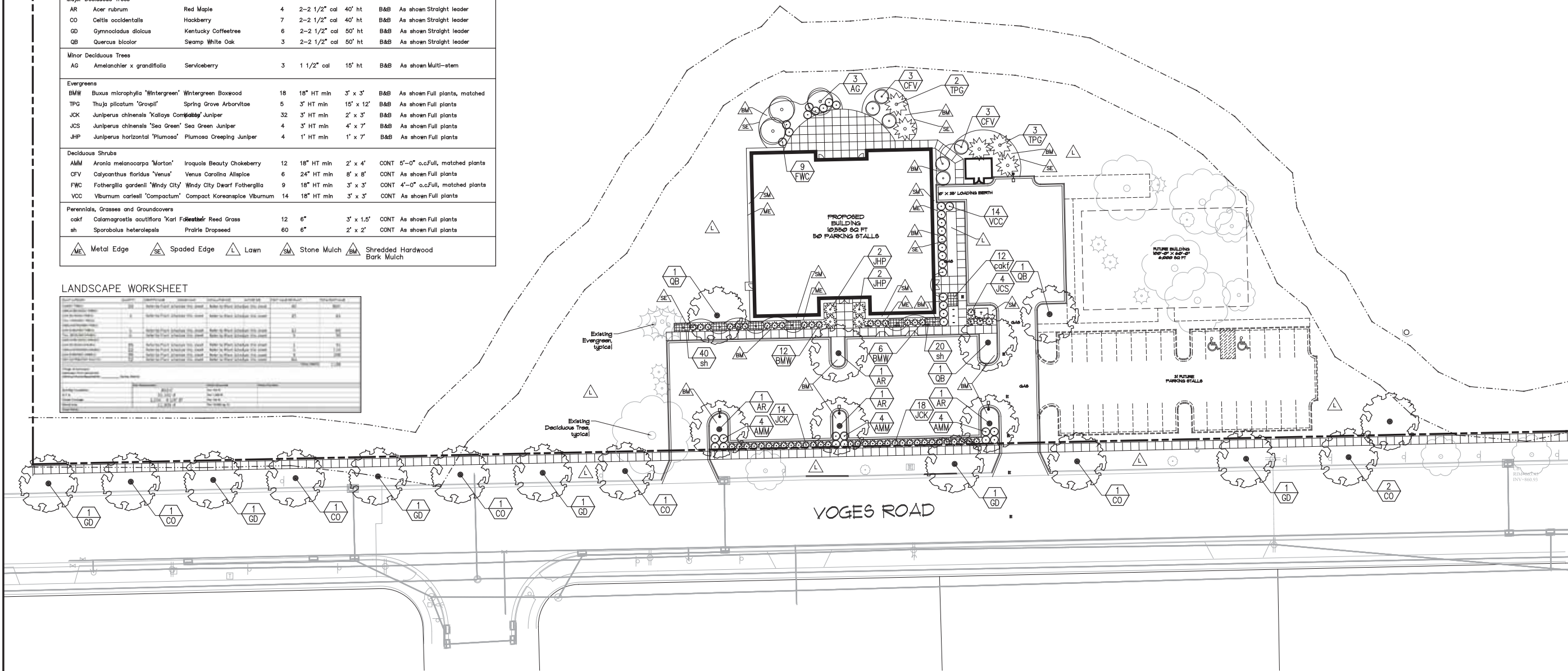
93.13

PLANT SCHEDULE AND LEGEND

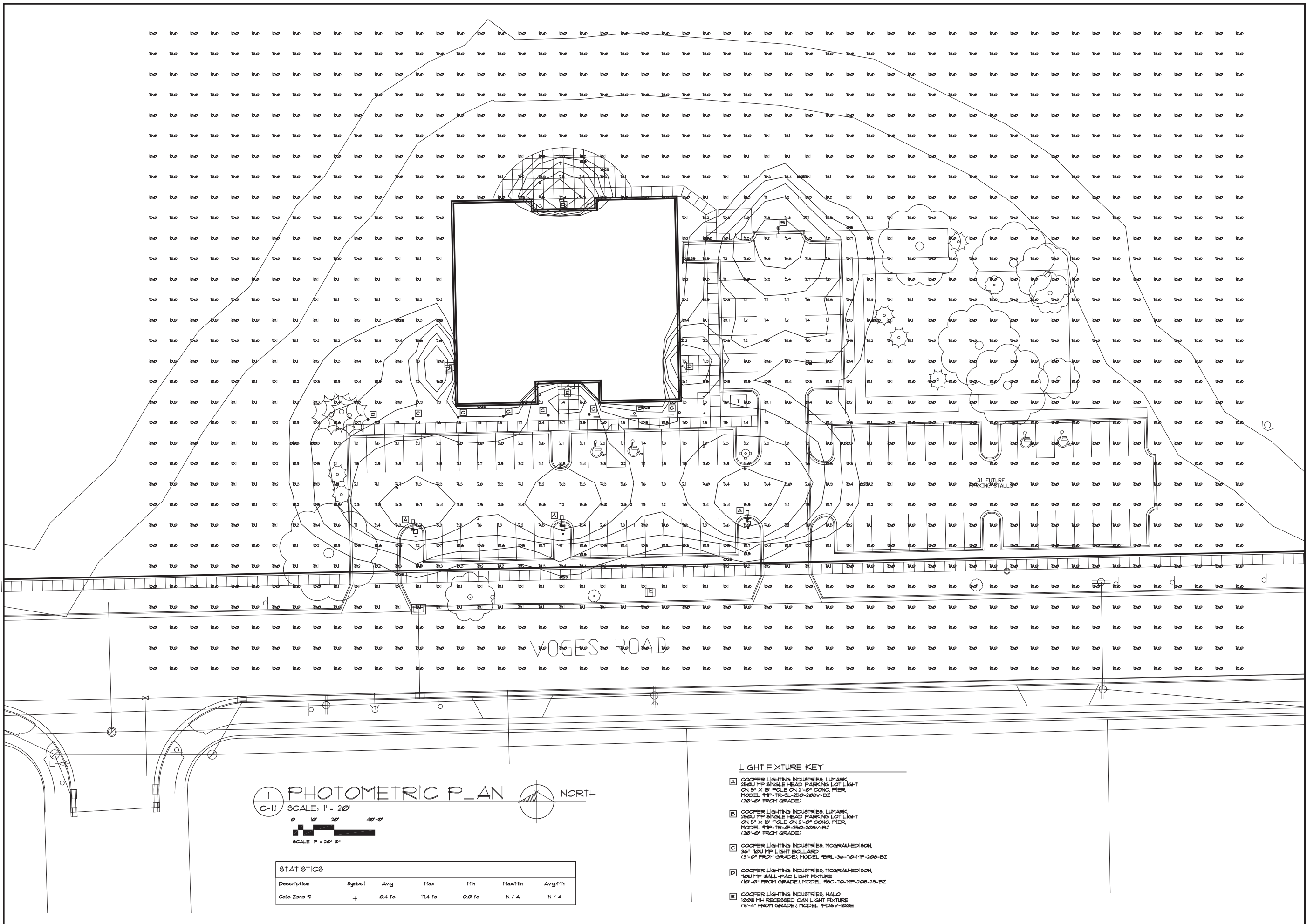
Key	Botanical Name	Common Name	Qty	Installation Size, Minimum	Mature Size, Minimum	Root Spec	Spacing	Comments
Major Deciduous Trees								
AR	Acer rubrum	Red Maple	4	2-2 1/2" cal	40' ht	B&B	As shown Straight leader	
CO	Celtis occidentalis	Hackberry	7	2-2 1/2" cal	40' ht	B&B	As shown Straight leader	
GD	Gymnocladus dioica	Kentucky Coffeetree	6	2-2 1/2" cal	50' ht	B&B	As shown Straight leader	
QB	Quercus bicolor	Swamp White Oak	3	2-2 1/2" cal	50' ht	B&B	As shown Straight leader	
Minor Deciduous Trees								
AG	Amelanchier x grandifolia	Serviceberry	3	1 1/2" cal	15' ht	B&B	As shown Multi-stem	
Evergreens								
BMW	Buxus microphylla 'Wintergreen'	Wintergreen Boxwood	18	18" HT min	3' x 3'	B&B	As shown Full plants, matched	
TPG	Thuja plicatum 'Gropfl'	Spring Grove Arborvitae	5	3' HT min	15' x 12'	B&B	As shown Full plants	
JCK	Juniperus chinensis 'Kallioys Compacta'	Juniper	32	3' HT min	2' x 3'	B&B	As shown Full plants	
JCS	Juniperus chinensis 'Sea Green'	Sea Green Juniper	4	3' HT min	4' x 7'	B&B	As shown Full plants	
JHP	Juniperus horizontal 'Plumosa'	Plumosa Creeping Juniper	4	1' HT min	1' x 7'	B&B	As shown Full plants	
Deciduous Shrubs								
AMM	Aronia melanocarpa 'Morton'	Iroquois Beauty Chokeberry	12	18" HT min	2' x 4'	CONT	5'-0" o.c.Full, matched plants	
CFV	Calyanthes floridus 'Venus'	Venus Carolina Allspice	6	24" HT min	8' x 8'	CONT	As shown Full plants	
FWC	Fothergilla gardenii 'Windy City'	Windy City Dwarf Fothergilla	9	18" HT min	3' x 3'	CONT	4'-0" o.c.Full, matched plants	
VCC	Viburnum carlesii 'Compactum'	Compact Koreanspice Viburnum	14	18" HT min	3' x 3'	CONT	As shown Full plants	
Perennials, Grasses and Groundcovers								
oakf	Calamagrostis acutiflora 'Karl Foerster'	Reed Grass	12	6"	3' x 1.5'	CONT	As shown Full plants	
sh	Sporobolus heterolepis	Prairie Dropseed	60	6"	2' x 2'	CONT	As shown Full plants	
ME	Metal Edge							
SE	Spaded Edge							
L	Lawn							
SM	Stone Mulch							
BM	Shredded Hardwood Bark Mulch							

LANDSCAPE WORKSHEET

Plant	Quantity	Notes
AR	4	As shown
CO	7	As shown
GD	6	As shown
QB	3	As shown
AG	3	As shown
BMW	18	As shown
TPG	5	As shown
JCK	32	As shown
JCS	4	As shown
JHP	4	As shown
AMM	12	As shown
CFV	6	As shown
FWC	9	As shown
VCC	14	As shown
oakf	12	As shown
sh	60	As shown



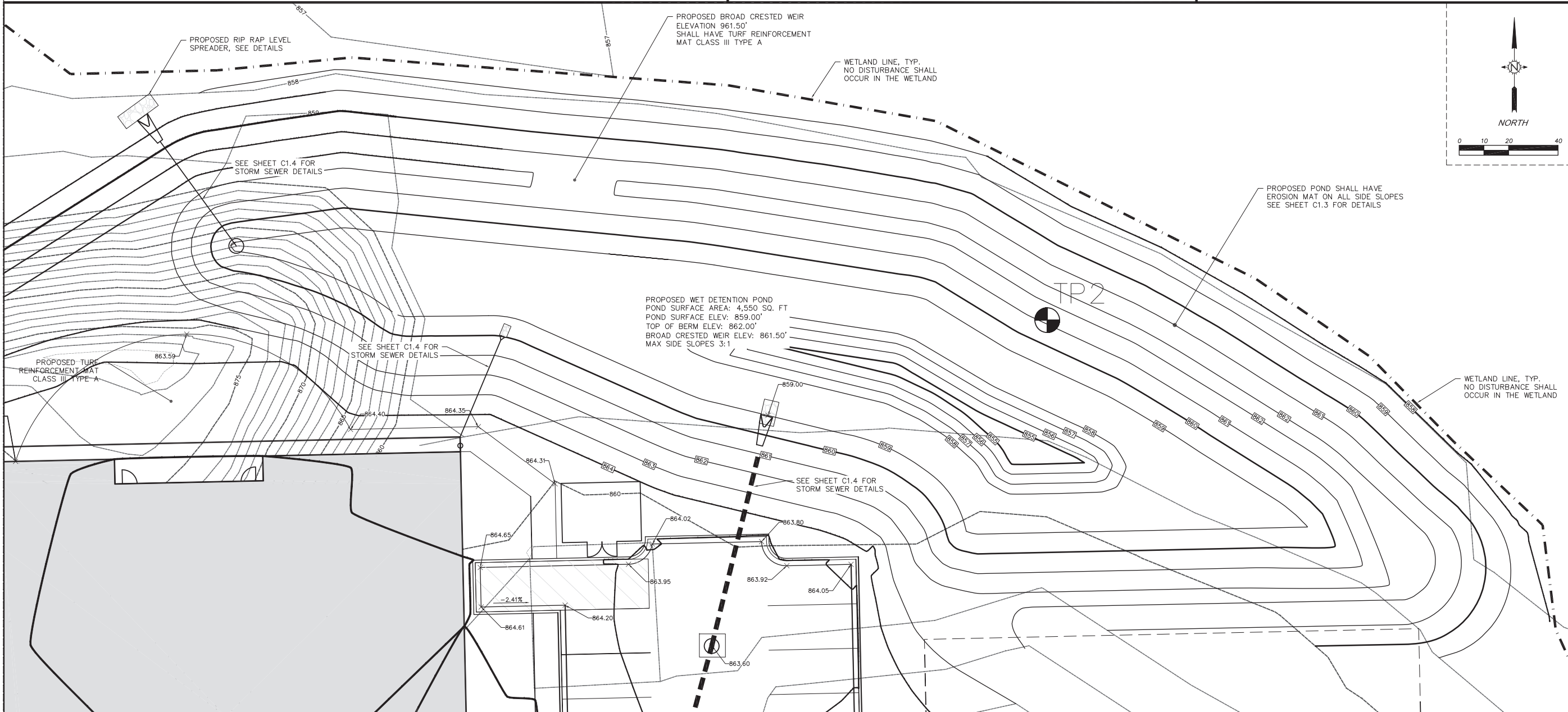
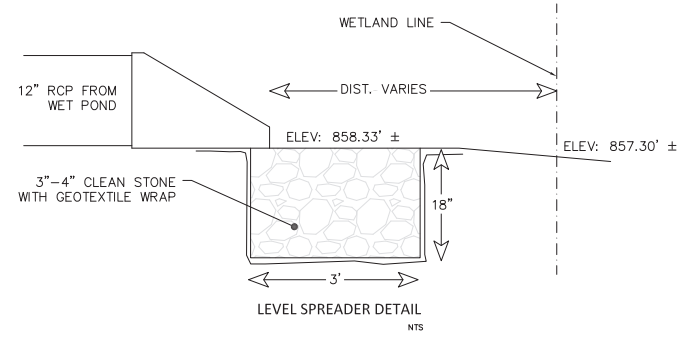
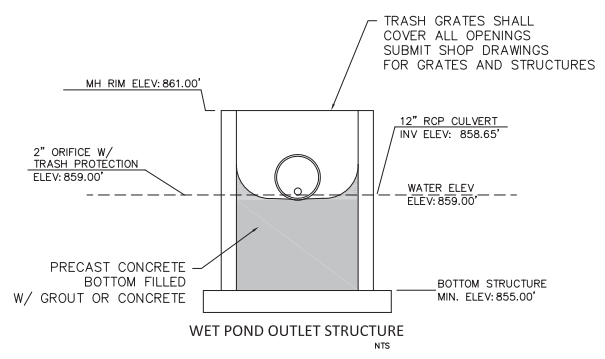
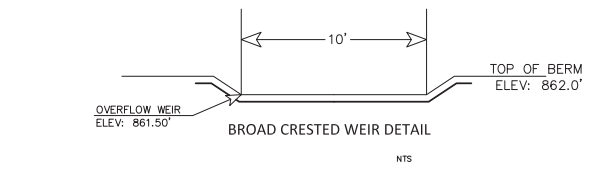
1 LANDSCAPE PLAN NORTH
 C-15 SCALE: 1" = 30'
 0 15' 30' 60'-0"
 SCALE 1" = 30'-0"

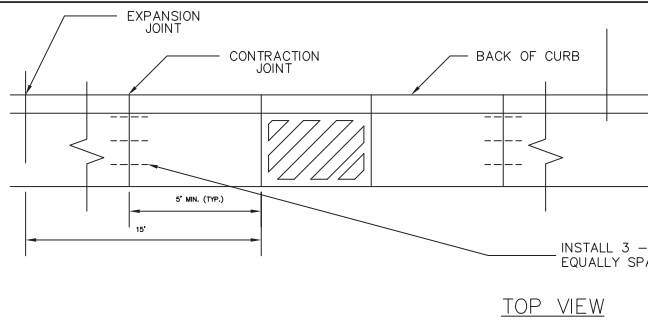


PHOTOMETRIC PLAN
C-11 SCALE: 1" = 20'
SCALE 1" = 20'-0"

STATISTICS						
Description	Symbol	Avg	Max	Min	Max/Min	Avg/Min
Calc Zone %	+	0.4 fc	11.4 fc	0.0 fc	N / A	N / A

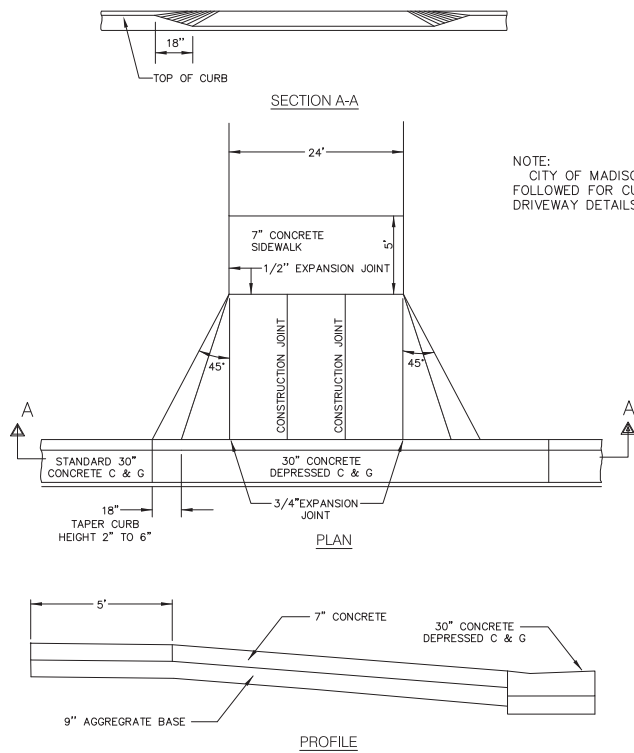
- LIGHT FIXTURE KEY**
- A COOPER LIGHTING INDUSTRIES, LUMARK 250W MP SINGLE HEAD PARKING LOT LIGHT ON 5' X 18' POLE ON 2'-0" CONC. PIER, MODEL #MP-TR-8L-250-200V-BZ (20'-0" FROM GRADE)
 - B COOPER LIGHTING INDUSTRIES, LUMARK 250W MP SINGLE HEAD PARKING LOT LIGHT ON 5' X 18' POLE ON 2'-0" CONC. PIER, MODEL #MP-TR-4F-250-200V-BZ (20'-0" FROM GRADE)
 - C COOPER LIGHTING INDUSTRIES, MCGRAW-EDISON 36" 100W MP LIGHT BOLLARD (3'-0" FROM GRADE), MODEL #BRL-36-10-1P-200-BZ
 - D COOPER LIGHTING INDUSTRIES, MCGRAW-EDISON 100W MP WALL-PAC LIGHT FIXTURE (10'-0" FROM GRADE), MODEL #SC-10-1P-200-28-BZ
 - E COOPER LIGHTING INDUSTRIES, HALO 100W MH RECESSED CAN LIGHT FIXTURE (9'-4" FROM GRADE), MODEL #PD6V-100E





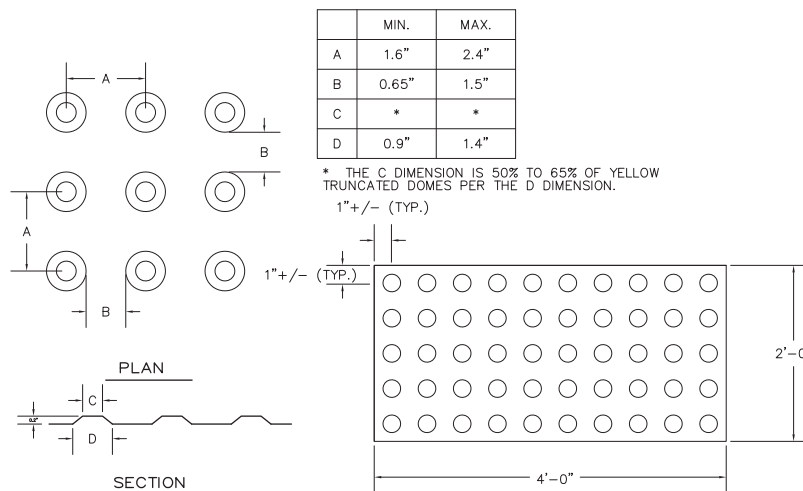
NOTE:
EXPANSION JOINT MATERIAL SHALL NOT BE PLACED WITHIN 15' OF ANY INLET.

10 CONCRETE CURB & GUTTER - INLET DETAIL
NOT TO SCALE

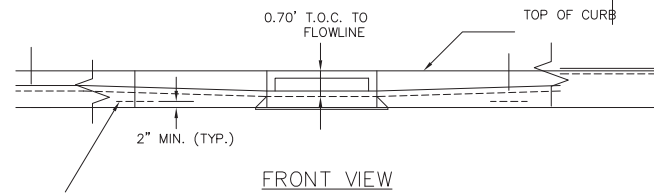


NOTE:
CITY OF MADISON STANDARD SHALL BE FOLLOWED FOR CURB CUTS, SIDEWALK, AND DRIVEWAY DETAILS.

9 DRIVEWAY DETAIL
NOT TO SCALE



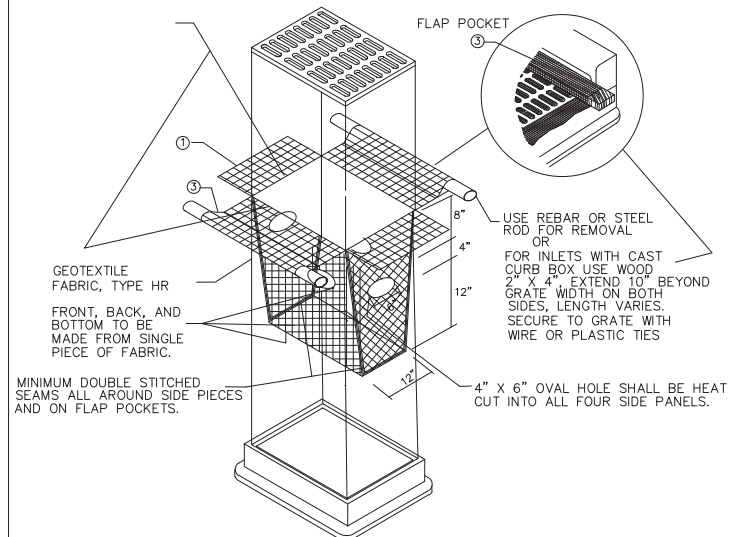
8 DETECTABLE WARNING FIELD



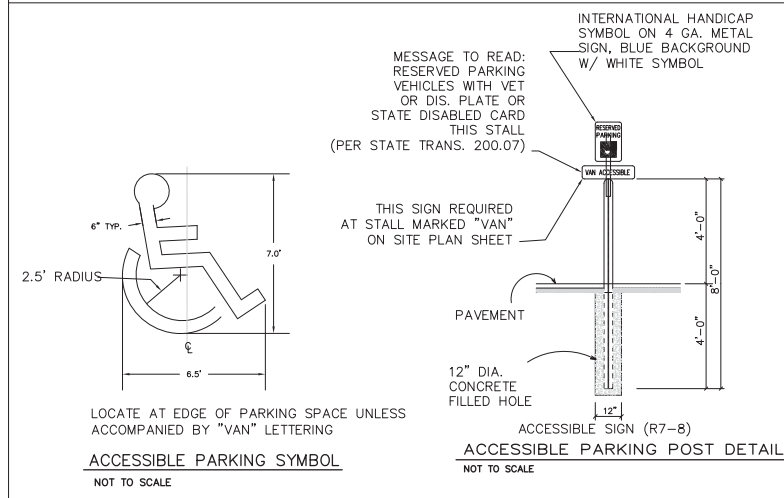
GENERAL NOTES

MANUFACTURED ALTERNATIVES APPROVED AND LISTED ON THE WISDOT'S EROSION CONTROL PRODUCT ACCEPTABILITY LIST MAY BE SUBSTITUTED.
WHEN REMOVING OR MAINTAINING INLET PROTECTION, CARE SHALL BE TAKEN SO THAT THE SEDIMENT TRAPPED ON THE GEOTEXTILE FABRIC DOES NOT FALL INTO THE INLET. ANY MATERIAL FALLING INTO THE INLET SHALL BE REMOVED IMMEDIATELY.
THE INSTALLED BAG SHALL HAVE A MINIMUM SIDE CLEARANCE, BETWEEN THE INLET WALLS AND THE BAG, MEASURED AT THE BOTTOM OF THE OVERFLOW HOLES OF 3". WHERE NECESSARY THE CONTRACTOR SHALL TRIM EXCESS FABRIC IN THE FLOW LINE TO WITHIN 3" OF THE GRATE.
CINCH THE BAG, USING PLASTIC ZIP TIES, TO ACHIEVE THE 3" CLEARANCE. TIES SHALL BE PLACED A MAXIMUM OF 4" FROM THE BOTTOM OF THE BAG.
INLET PROTECTION DEVICES SHALL BE MAINTAINED OR REPLACED AT DIRECTION OF THE ENGINEER. CATCH-ALL INLET PROTECTION DEVICES OR EQUIVALENT AS APPROVED BY THE CITY ENGINEER MUST BE USED.

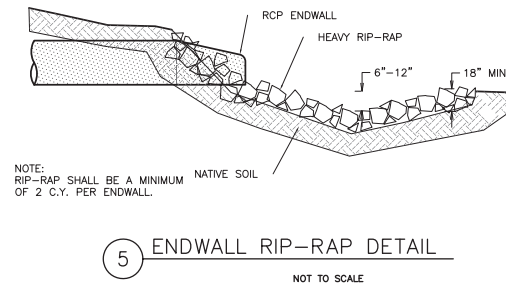
- 1 FINISHED SIZE, INCLUDING FLAP POCKETS WHERE REQUIRED, SHALL EXTEND A MINIMUM OF 10" AROUND THE PERIMETER TO FACILITATE MAINTENANCE OR REMOVAL.
- 2 FOR INLET PROTECTION WITH CURB BOX AN ADDITIONAL 18" OF FABRIC IS WRAPPED AROUND THE WOOD AND SECURED WITH STAPLES. THE WOOD SHALL NOT BLOCK THE ENTIRE HEIGHT OF THE CURB BOX OPENING.
- 3 FLAP POCKETS SHALL BE LARGE ENOUGH TO ACCEPT WOOD 2x4.



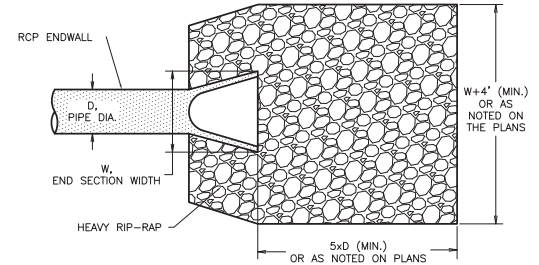
6 INLET PROTECTION, TYPE D "MODIFIED"



7 ACCESSIBLE PARKING

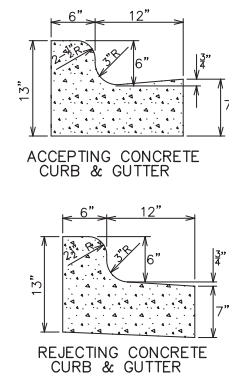


5 ENDWALL RIP-RAP DETAIL
NOT TO SCALE



3 ASPHALT PAVEMENT

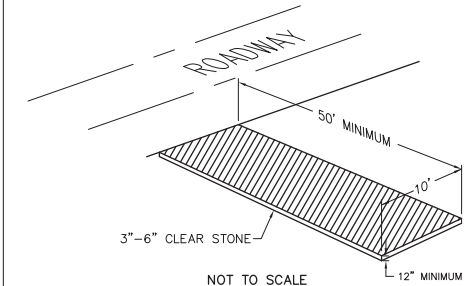
CURB AND GUTTER



NOTES:

LATERAL CONTRACTION JOINTS SHALL BE PLACED AT INTERVALS OF NOT MORE THAN 15' NOR LESS THAN 6' IN LENGTH. THE JOINTS SHALL BE A MINIMUM OF 3" IN DEPTH. EXPANSION JOINTS SHALL BE PLACED TRANSVERSELY AT RADIUS POINTS ON CURVES OF RADIUS 200' OR LESS, AND AT ANGLE POINTS, OR AS DIRECTED BY THE ENGINEER.
THE EXPANSION JOINT SHALL BE A ONE PIECE ASPHALTIC MATERIAL HAVING THE SAME DIMENSIONS AS CURB & GUTTER AT THAT STATION AND BE 1/2" THICK. IN ALL CASES, CONCRETE CURB & GUTTER SHALL BE PLACED ON THOROUGHLY COMPACTED CRUSHED STONE.

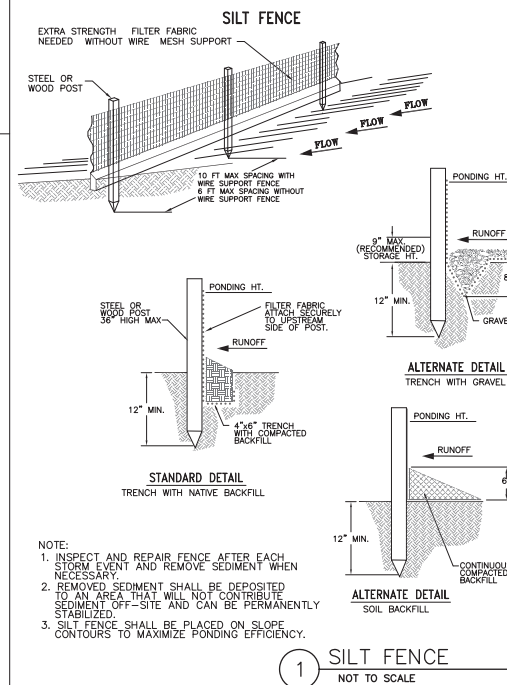
4 CURB SECTIONS



2 STONE CONSTRUCTION ENTRANCE

STONE CONSTRUCTION ENTRANCE GENERAL NOTES:

1. CONTRACTOR SHALL PROVIDE STONE CONSTRUCTION ENTRANCE IN ACCORDANCE TO WISDNR TECHNICAL STANDARD NO. 1057.
2. USE 3 TO 6 INCH CLEAR OR WASHED STONE. STONE SHALL BE A MINIMUM 12" THICK. LENGTH OF ENTRANCE SHALL BE 50' MINIMUM. IF SATURATED CONDITIONS ARE PRESENT THE PAD SHALL BE UNDERLAIN WITH WISDOT TYPE R GEOTEXTILE FABRIC.
3. SURFACE WATER SHALL BE PREVENTED FROM PASSING THROUGH THE CONSTRUCTION ENTRANCE. FLOWS SHALL BE DIVERTED AROUND ENTRANCE AREA VIA OTHER PRACTICES.



- NOTE:
1. INSPECT AND REPAIR FENCE AFTER EACH STORM EVENT AND REMOVE SEDIMENT WHEN NECESSARY.
 2. REMOVED SEDIMENT SHALL BE DEPOSITED TO AN AREA THAT WILL NOT CONTRIBUTE SEDIMENT OFF-SITE AND CAN BE PERMANENTLY STABILIZED.
 3. SILT FENCE SHALL BE PLACED ON SLOPE CONTOURS TO MAXIMIZE PONDING EFFICIENCY.

1 SILT FENCE
NOT TO SCALE

Construction Specifications

The height of a silt fence shall not exceed 36 inches. Storage height shall never exceed 18".

The fence line shall follow the contour as closely as possible.

If possible, the filter fabric shall be cut from a continuous roll to avoid the use of joints. When joints are necessary, filter cloth shall be spliced only at a support post, with a minimum 6-inch overlap and both ends securely fastened to the post.

Posts shall be spaced a maximum of 10 feet apart and driven securely into the ground (minimum of 12 inches). When extra strength fabric is used without the wire support fence, post spacing shall not exceed 6 feet.

The ends of the fence shall be turned uphill.

A trench shall be excavated approximately 4 inches wide and 6 inches deep along the line of posts and upslope from the barrier.

When standard-strength filter fabric is used, a wire mesh support fence shall be fastened securely to the upslope side of the posts using heavy duty wire staples at least 1 inch long, tie wires or hog rings. The wire shall extend into the trench a minimum of 2 inches and shall not extend more than 36 inches above the original ground surface.

The standard-strength filter fabric shall be stapled or wired to the fence, and 6 inches of the fabric shall extend into the trench. The fabric shall not extend more than 36 inches above the original ground surface. Filter fabric shall not be stapled to existing trees.

When extra-strength filter fabric and closer post spacing are used, the wire mesh support fence may be eliminated. In such a case, the filter fabric is stapled or wired directly to the posts.

The trench shall be backfilled and/or the soil compacted over the toe of the filter fabric. The filter fabric shall not be secured by sand bags.

Silt fences placed at the toe of a slope shall be set at least 6 feet from the toe in order to increase ponding volume.

Silt fences shall be removed when they have served their useful purpose, but not before the upslope area has been permanently stabilized, and any sediment stored behind the silt fence has been removed.

Inspection and Maintenance

Silt fences and filter barriers shall be inspected weekly and after each significant storm (1" in 24 hr.). Any required repairs shall be made immediately.

Sediment shall be removed when it reaches 1/3 height of the fence or 9 inches maximum.

The removed sediment shall be vegetated or otherwise stabilized.



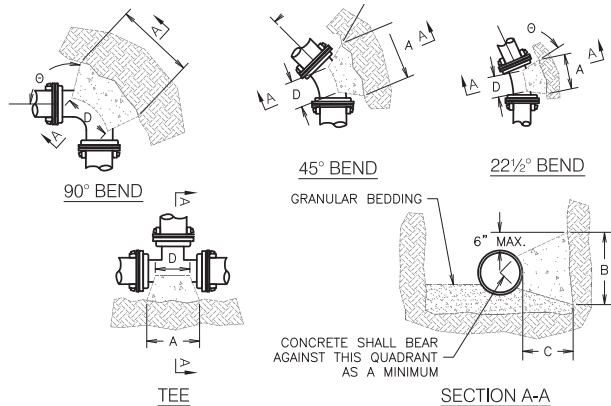
634 West Main Street
Madison, WI 53703
608-257-1090
FAX 608-257-1092



COPYRIGHTED DRAWING
THIS DOCUMENT OR THE INFORMATION HEREIN IS NOT TO BE REPRODUCED, DISTRIBUTED, USED OR DISCLOSED EITHER IN WHOLE OR PART UNLESS AUTHORIZED BY T.K. DESIGN BUILD

PROPOSED FACILITY FOR:
TRANSE
PROPOSED PROJECT DETAILS
5402 VOGES ROAD
CITY OF MADISON, DANE COUNTY WISCONSIN

C-2.1
9.3.13



15 STANDARD THRUST BLOCKING DETAIL
NOT TO SCALE

WOOD BLOCKING MAY NOT BE USED. ONLY SOLID CONCRETE BLOCKS ARE ALLOWED.

DIMENSION "D" SHALL BE AS LARGE AS POSSIBLE, BUT THE CONCRETE SHALL NOT INTERFERE WITH THE MECHANICAL JOINTS.

DIMENSION "C" SHALL BE AT LEAST 6 INCHES, AND LARGE ENOUGH TO MAKE THE "B" ANGLE EQUAL TO OR GREATER THAN 45 DEGREES WITH THE DIMENSION "A" AS SHOWN ON THE TABLE, OR GREATER, AND WITH DIMENSION "D" AS LARGE AS POSSIBLE.

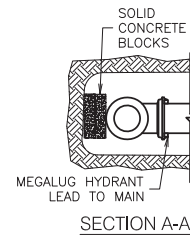
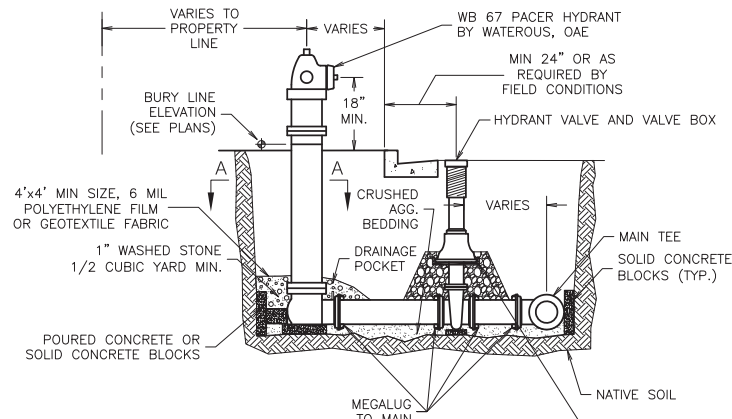
CONCRETE SHALL BE CLASS "CC".

ALL BUTTRESSED JOINTS SHALL INCLUDE MEGALUGS AND CONCRETE BUTTRESSING.

PIPE SIZE	BUTTRESS DIMENSIONS					
	TEES		22.5° BEND		45° BEND	
	A	B	A	B	A	B
6	1'-3"	1'-0"	1'-0"	1'-0"	1'-0"	1'-2"
8	1'-6"	1'-4"	1'-0"	1'-0"	1'-2"	1'-6"
10/12	2'-3"	2'-0"	1'-4"	1'-4"	1'-10"	2'-8"
14/16	3'-2"	2'-6"	1'-10"	1'-8"	2'-6"	3'-10"
18/20	4'-0"	3'-0"	2'-4"	2'-0"	3'-3"	5'-0"
22/24	5'-3"	3'-4"	2'-10"	2'-4"	4'-0"	6'-4"
30	6'-3"	4'-3"	3'-6"	3'-0"	5'-4"	8'-0"

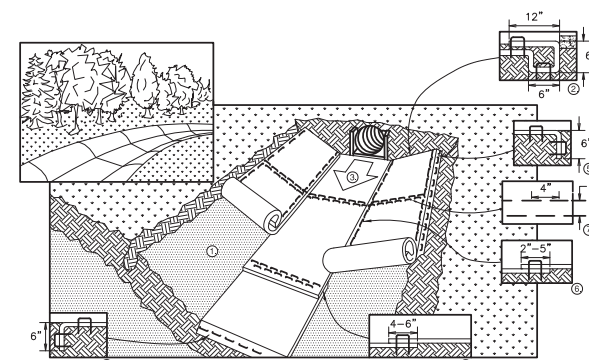
DIMENSIONS IN THE TABLE ARE BASED ON A WATER PRESSURE OF 150 PSI AND SOIL RESISTANCE OF 2000 LBS./SQ.FT.

* = FOR TEE THIS WILL BE THE BRANCH PIPE.



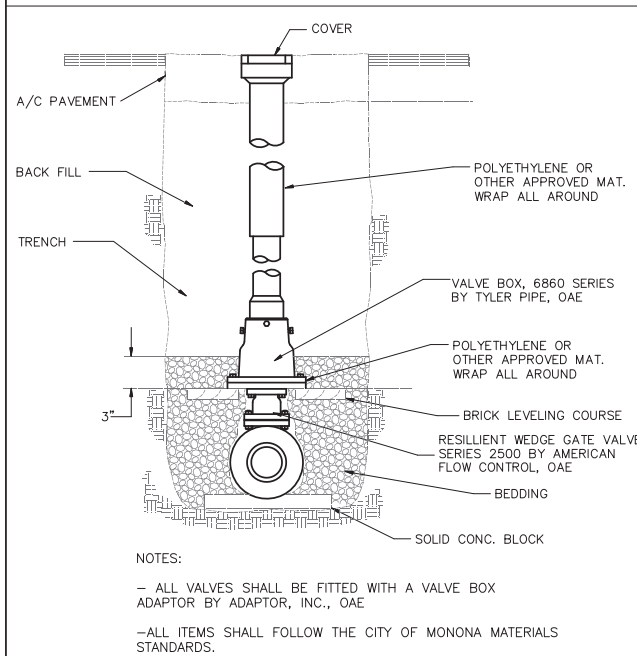
16 STANDARD FIRE HYDRANT INSTALLATION
NOT TO SCALE

- NOTES:
- THE HYDRANT AND HYDRANT VALVE SHALL BE CONNECTED TO THE MAIN TEE BY MEGALUGS.
 - DRAIN PORTS ARE TO BE PLUGGED IF GROUNDWATER IS EXPECTED TO BE ABOVE THE DRAIN PORTS.
 - THE DISTANCE BETWEEN THE HYDRANT AND THE MAIN WILL VARY.
 - WHERE CONCRETE BLOCKING CANNOT BE INSTALLED, RODDING THE HYDRANT TO THE MAIN IS REQUIRED IN ADDITION TO THE MEGALUGS. RODDING SHALL BE IN ACCORDANCE WITH DETAIL.
 - VALVE BOX SHALL BE BEDDED WITH 1" CLEAR STONE
 - ALL ITEMS SHALL FOLLOW THE CITY OF MONONA MATERIALS STANDARDS.

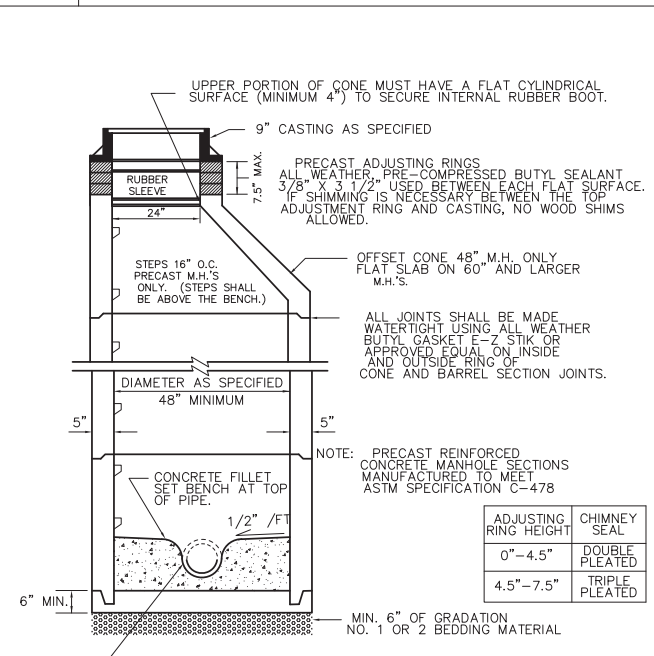


1. PREPARE SOIL BEFORE INSTALLING BLANKETS, INCLUDING APPLICATION OF FERTILIZER AND SEED.
 2. BEGIN AT THE TOP OF THE CHANNEL BY ANCHORING THE BLANKET IN A 6" DEEP X 6" WIDE TRENCH WITH APPROXIMATELY 12" OF BLANKET EXTENDED BEYOND THE UP-SLOPE PORTION OF THE TRENCH. ANCHOR THE BLANKET WITH A ROW OF STAPLES/STAKES APPROXIMATELY 12" APART IN THE BOTTOM OF THE TRENCH. BACKFILL AND COMPACT THE TRENCH AFTER STAPLING. APPLY SEED TO COMPACTED SOIL AND FOLD REMAINING 12" PORTION OF BLANKET BACK OVER SEED AND COMPACTED SOIL. SECURE BLANKET OVER COMPACTED SOIL WITH A ROW OF STAPLES/STAKES SPACED APPROXIMATELY 12" APART ACROSS THE WIDTH OF THE BLANKET.
 3. ROLL CENTER BLANKET IN DIRECTION OF WATER FLOW IN BOTTOM OF CHANNEL. BLANKETS WILL UNROLL WITH APPROPRIATE SIDE AGAINST THE SOIL SURFACE. ALL BLANKETS MUST BE SECURELY FASTENED TO THE SOIL SURFACE BY PLACING STAPLES/STAKES IN APPROPRIATE LOCATIONS AS RECOMMENDED BY THE MANUFACTURER.
 4. PLACE CONSECUTIVE BLANKETS END OVER END (SHINGLE STYLE) WITH A 4-6" OVERLAP. USE A DOUBLE ROW OF STAPLES STAGGERED 4" APART AND 4" ON CENTER TO SECURE BLANKETS.
 5. FULL LENGTH EDGE OF BLANKETS AT TOP OF SIDE SLOPE MUST BE ANCHORED WITH A ROW OF STAPLES/STAKES APPROXIMATELY 12" APART IN A 6" DEEP X 6" WIDE TRENCH. BACKFILL AND COMPACT THE TRENCH AFTER STAPLING.
 6. ADJACENT BLANKETS MUST BE OVERLAPPED APPROXIMATELY 4" AND STAPLED.
 7. A STAPLE CHECK SLOT IS RECOMMENDED AT 30 TO 40 FOOT INTERVALS. USE A DOUBLE ROW OF STAPLES STAGGERED 4" APART AND 4" ON CENTER OVER ENTIRE WIDTH OF THE CHANNEL.
 8. THE TERMINAL END OF THE BLANKETS MUST BE ANCHORED WITH A ROW OF STAPLES/STAKES APPROXIMATELY 12" APART IN A 6" DEEP X 6" WIDE TRENCH. BACKFILL AND COMPACT THE TRENCH AFTER STAPLING.
- NOTE: IN LOOSE SOIL CONDITIONS, THE USE OF STAPLES OR STAKE LENGTHS GREATER THAN 6" MAY BE NECESSARY TO PROPERLY ANCHOR THE BLANKETS.

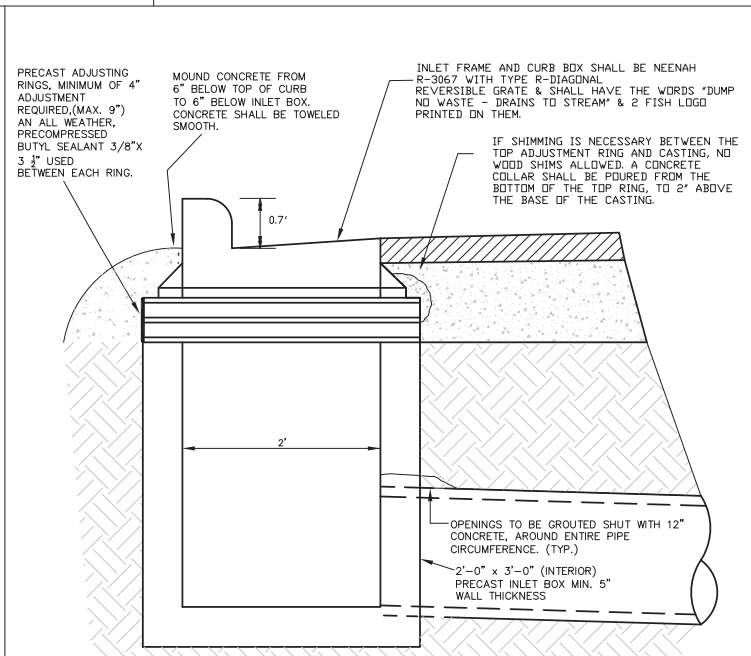
17 EROSION CONTROL MAT - INSTALLATION DETAILS
NOT TO SCALE



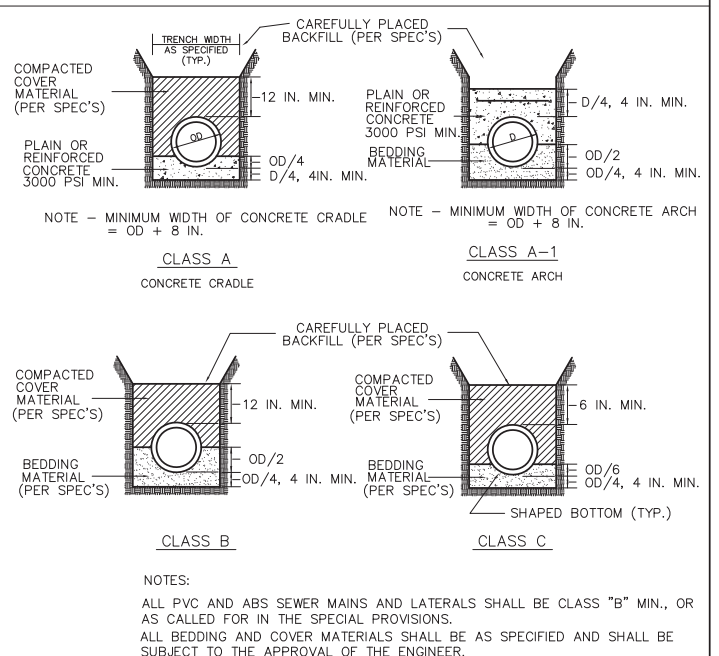
14 STANDARD WATER VALVE BOX DETAIL
NOT TO SCALE



13 STANDARD PRECAST SANITARY MANHOLE DETAIL
NOT TO SCALE



12 TYPICAL INLET DETAIL
NOT TO SCALE



11 STORM AND SANITARY SEWER BEDDING STANDARDS
NOT TO SCALE



634 West Main Street
Madison, WI 53703
608-257-1090
FAX 608-257-1092



COPYRIGHTED DRAWING
THIS DOCUMENT OR THE INFORMATION HEREIN IS NOT TO BE REPRODUCED, DISTRIBUTED, USED OR DISCLOSED EITHER IN WHOLE OR PART UNLESS AUTHORIZED BY TJK DESIGN BUILD

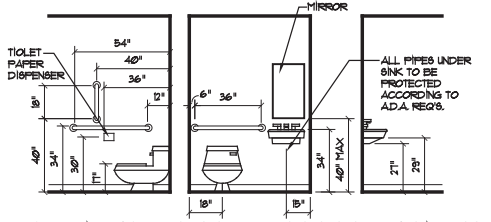
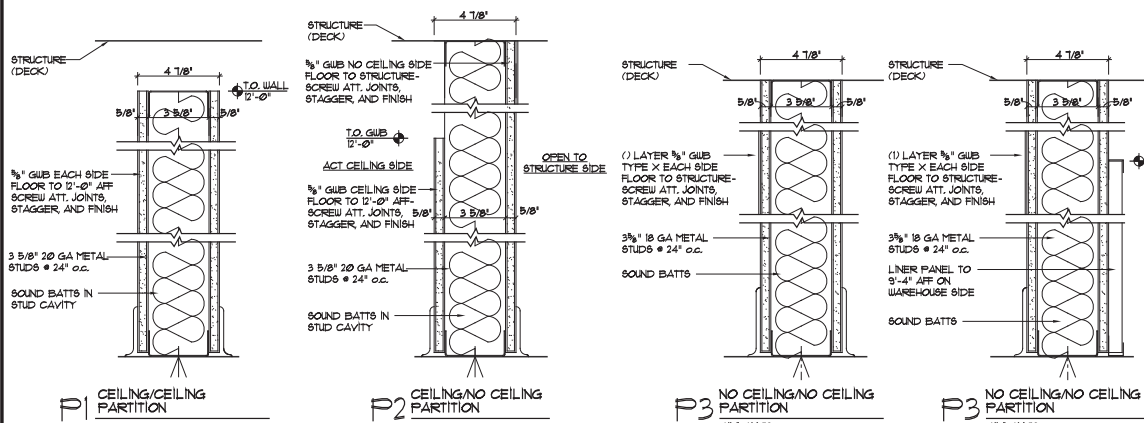
PROPOSED FACILITY FOR:
TRANE
PROPOSED PROJECT DETAILS
5402 VOGES ROAD
CITY OF MADISON, DANE COUNTY WISCONSIN

C-2.2

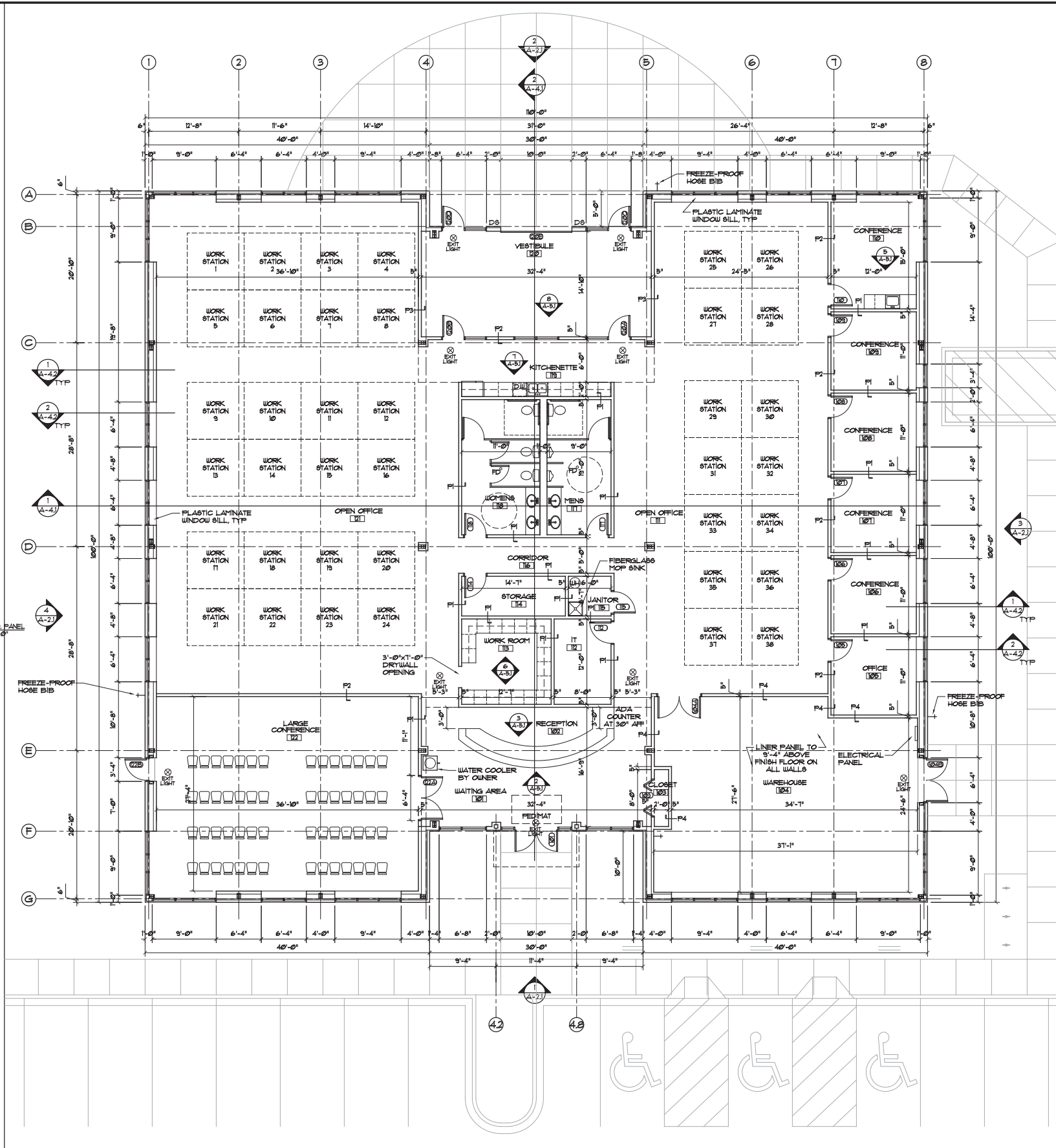
9.3.13

GENERAL NOTES:

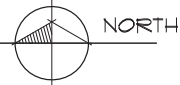
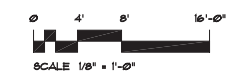
- CONSTRUCTION TYPE 3B, NOT SPRINKLED
- ELECTRICAL, HVAC, PLUMBING AND CONTRACTORS TO PROVIDE COMPLETE SYSTEMS WITH ALL NECESSARY PLAN REVIEW AND PERMITS.
- EXIT SIGNS SHALL BE ILLUMINATED AT ALL TIMES. ENSURE CONTINUED ILLUMINATION FOR A DURATION OF NOT LESS THAN 90 MINUTES IN CASE OF PRIMARY POWER LOSS. EXIT SIGNS SHALL BE CONNECTED TO AN EMERGENCY ELECTRICAL SYSTEM PROVIDED FROM STORAGE BATTERIES.
- PROVIDE AN EMERGENCY ILLUMINATION POWER ALONG EGRESS PATHS IN ACCORDANCE WITH ICC ELECTRICAL CODE. ILLUMINATION IS TO LAST FOR A DURATION OF NOT LESS THAN 90 MINUTES AND SHALL CONSIST OF STORAGE BATTERIES (INTERIOR & EXTERIOR)
- ELECTRIC CONTRACTOR TO PROVIDE SUFFICIENT TEMPORARY POWER AND LIGHTING DURING CONSTRUCTION.
- TENANT SPACE IS TO HAVE AN ACCESSIBLE WATER BOTTLE DRINKING FOUNTAIN WITH INDIVIDUAL DRINKING CUPS FURNISHED BY TENANT (NO PLUMBING/ELECTRICIAN TO PROVIDE OUTLET FOR COOLER)
- ALL PERIMETER WINDOW SILLS ARE TO BE PLASTIC LAMINATE WITH DRYWALL RETURNS. (COLOR BY ARCHITECT)
- ALL WALLS TO RECEIVE PRIMER WITH EGGSHELL TEXTURE BY DRYWALL CONTRACTOR AND (2) COATS OF LATEX PAINT BY PAINTING CONTRACTOR.
- ALL GLAZING WITHIN A 2'-0" ARC OF EITHER VERTICAL EDGE OF THE DOOR IN A CLOSED POSITION AND WHERE THE BOTTOM EXPOSED EDGE OF THE GLAZING IS LESS THAN 2'-0" ABOVE THE WALKING SURFACE ARE TO BE TEMPERED SAFETY GLASS (TYPICAL)
- FURNISH AND INSTALL DOORS AND WINDOW ASSEMBLIES AS INDICATED ON THE PLANS ALONG WITH ALL HARDWARE INDICATED AND THAT MAY BE REQUIRED FOR A COMPLETE JOB. ALL DOORS AND WINDOWS SHALL OPERATE SMOOTHLY WITHOUT BIND AND BE INSTALLED PLUMB AND TRUE. ALL HARDWARE SHALL FIT PROPERLY AND BE ADJUSTED AS REQUIRED. ALL FRAMES SHALL MEET OR EXCEED AAMA 503 AND ASTM 183. SEE SCHEDULES FOR MORE INFORMATION.
- ALL LOCKSETS SHALL BE LEVER TYPE AS REQUIRED TO MEET REQUIREMENTS OF THE A.D.A. ALL OTHER HARDWARE SHALL CONFORM TO THE REQUIREMENTS OF A.D.A. ALL EXIT DOORS SHALL BE EQUIPPED WITH LEVER TYPE EXIT HARDWARE OPERABLE FROM THE INSIDE WITHOUT THE USE OF A LATCH KEY OR BOLT. SCHLAGE "A" SERIES OR APPROVED EQUAL.
- DRYWALL CONTRACTOR TO INSTALL DRYWALL PER THE LATEST EDITIONS OF "RECOMMENDED SPECIFICATIONS FOR THE APPLICATION AND FINISHING OF GYPSUM BOARD" G-26 AS PUBLISHED BY THE GYPSUM ASSOCIATION AND THE "CONCRETE CONSTRUCTION HANDBOOK" AS PUBLISHED BY UNITED STATES GYPSUM COMPANY. NOTE: PROVIDE CONTROL JOINTS PER THESE REQUIREMENTS. PROVIDE VINYL EDGE TRIM # EXTERIOR DRYWALL CEILING IF REQUIRED.
- TOILET ROOMS TO MEET A.D.A. REGULATIONS AND TO HAVE STANDARD ACCESSORIES AND DISPENSERS.
- ALL EXHAUST FAN VENTING THROUGH ROOF BY HVAC CONTRACTOR. COORDINATE INSTALLATION WITH JOB SUPERINTENDENT.
- ALL ROOF TOP PENETRATIONS ARE TO BE PREFINISHED METAL OR PAINTED TO MATCH THE ROOF. VERIFY COLOR WITH ARCHITECT PRIOR TO INSTALLATION. COORDINATE INSTALLATION WITH JOB SUPERINTENDENT.
- ALL SIGNAGE SHALL MEET THE REQUIREMENTS OF THE A.D.A.
- WHERE PERMANENT IDENTIFICATION IS PROVIDED FOR ROOMS AND SPACES, SIGNS SHALL BE INSTALLED ON THE WALL ADJACENT TO LATCH SIDE OF THE DOOR WHERE THERE IS NO WALL SPACE TO THE LATCH SIDE OF THE DOOR, INCLUDING AT THE DOUBLE LEAF DOORS, SIGNS SHALL BE PLACED ON THE NEAREST ADJACENT WALL. SUBMIT TEXT FOR APPROVAL PRIOR TO FABRICATION.
- MOUNTING HEIGHT SHALL BE 6'-0" ABOVE FINISH FLOOR TO THE CENTERLINE OF THE SIGN UNLESS INDICATED OTHERWISE.
- GENERAL CONTRACTOR TO FURNISH AND INSTALL EXTINGUISHERS PER I.B.C. SECTION 906 AND NFPA 1010-1918 MOUNT FIRE EXTINGUISHER NOT HIGHER THAN 4'-0" ABOVE FINISH FLOOR UNLESS LOCAL REGULATIONS REQUIRED DIFFERENT HEIGHT. ALL FIRE EXTINGUISHERS AND CABINETS TO MEET THE REQUIREMENTS OF THE A.D.A.
- MASON TO USE COLORED MORTAR TO MATCH ADJACENT BLOCK COLOR. VERIFY COLOR WITH ARCHITECT PRIOR TO INSTALLATION.
- MASON IS TO USE DUR-O-WALL TRIANGLE TIE MODEL # D/A 160 AND DUR-O-WALL MODEL # D/A 210 ANCHOR SCREW TO STUDS WITH (2) SCREWS, TRIANGLES AND ANCHORS ARE TO BE HOT DIPPED FINISH MASON IS TO UTILIZE (1) TIE ASSEMBLY FOR EVERY 225 SQ FT OR WALL AREA (MAXIMUM).



TYPICAL RESTROOM ELEVATIONS
SCALE: 1/4" = 1'-0"



1 FLOOR PLAN
A-1.1 SCALE: 1/8" = 1'-0"



634 West Main Street
Madison, WI 53703
608-251-1090
FAX 608-251-1092

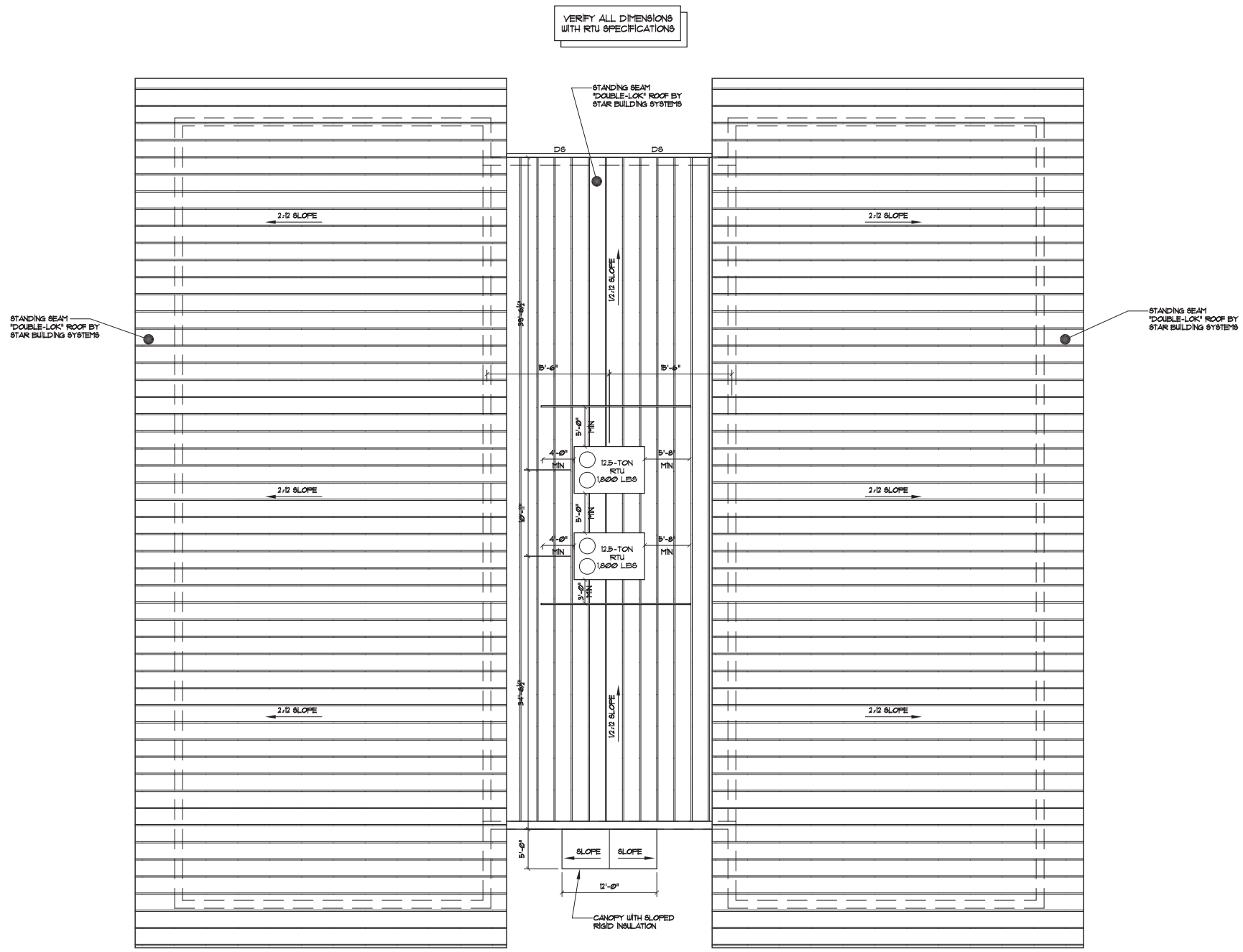
REV DATE

COPYRIGHTED DRAWING
© 2011 TJK Design Build, Inc. ALL RIGHTS RESERVED. NEITHER THIS DOCUMENT NOR THE INFORMATION HEREIN MAY BE REPRODUCED, DISTRIBUTED, USED OR DISCLOSED, IN WHOLE OR IN PART, UNLESS EXPRESSLY AUTHORIZED IN WRITING BY TJK DESIGN BUILD, INC.

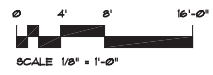
PROPOSED FACILITY FOR:
TRANE
5402 VOGES ROAD
MADISON, WISCONSIN

A-1.1

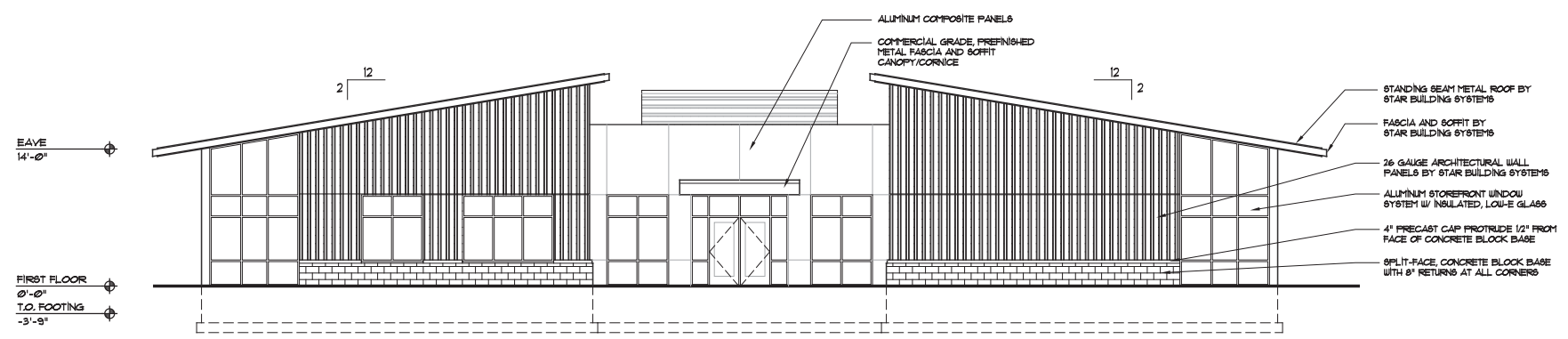
8.28.13



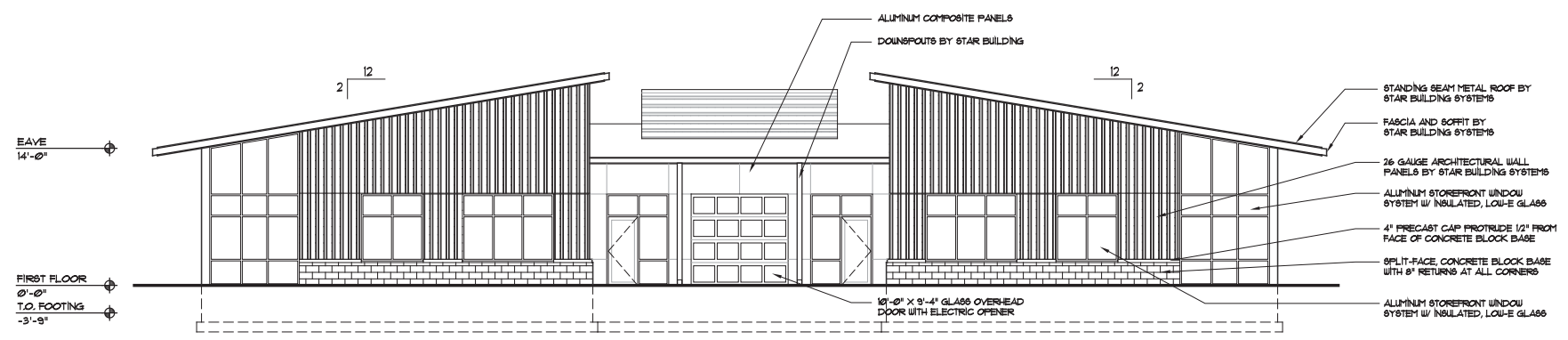
1 ROOF PLAN
A-12 SCALE: 1/8" = 1'-0"



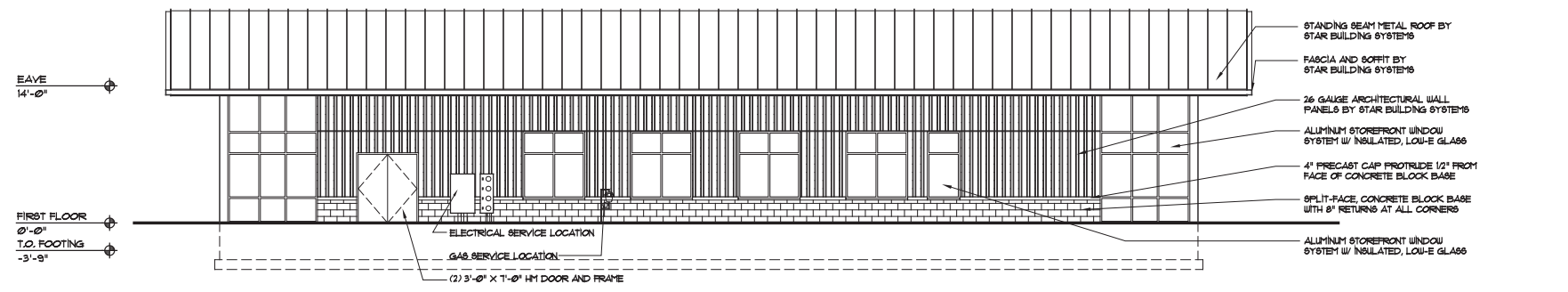
MATERIAL LIST	
STANDING SEAM METAL ROOF:	STAR BUILDING SYSTEMS, STARSHIELD 24 GA, "9FRUCE"
FASCIA, GUTTERS AND DOWNSPOUTS	STAR BUILDING SYSTEMS, "9FRUCE"
ARCHITECTURAL WALL PANELS AND GUTTERS: (9'-4" AND ABOVE)	STAR BUILDING SYSTEMS, "SLATE GRAY", STARMARK METAL WALL PANEL TRIM TO MATCH
ARCHITECTURAL WALL PANELS (9'-4" AND BELOW)	STAR BUILDING SYSTEMS, "SNOW WHITE", STARMARK METAL WALL PANEL TRIM TO MATCH
ALUMINUM STOREFRONT WINDOW SYSTEM	KAWNEER "BLACK" WITH 1" GRAY TINTED, INSULATED LOW-E GLASS
ALUMINUM COMPOSITE PANELS	CITADEL, "MIST WHITE"
SPLIT-FACE BLOCK	COUNTY MATERIALS, 121-228A, "MUSHROOM" WITH 8" RETURNS AT CORNERS AND MORTAR TO MATCH



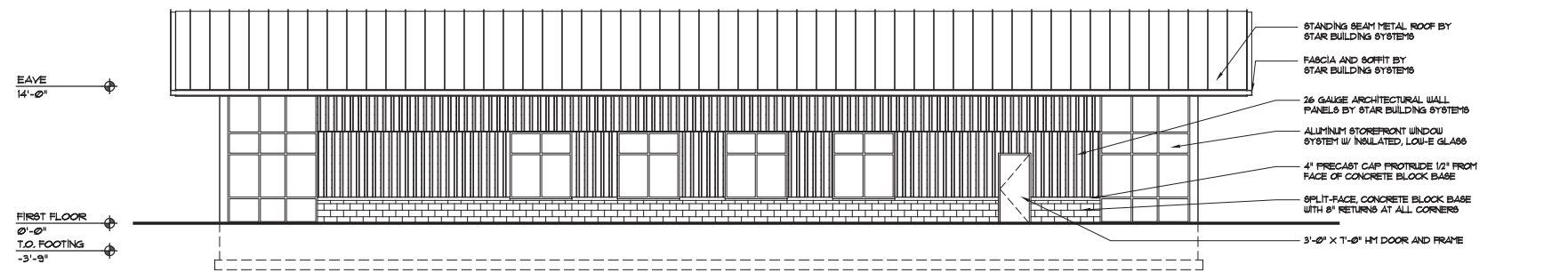
1 SOUTH ELEVATION
A-2.1 SCALE: 1/8" = 1'-0"



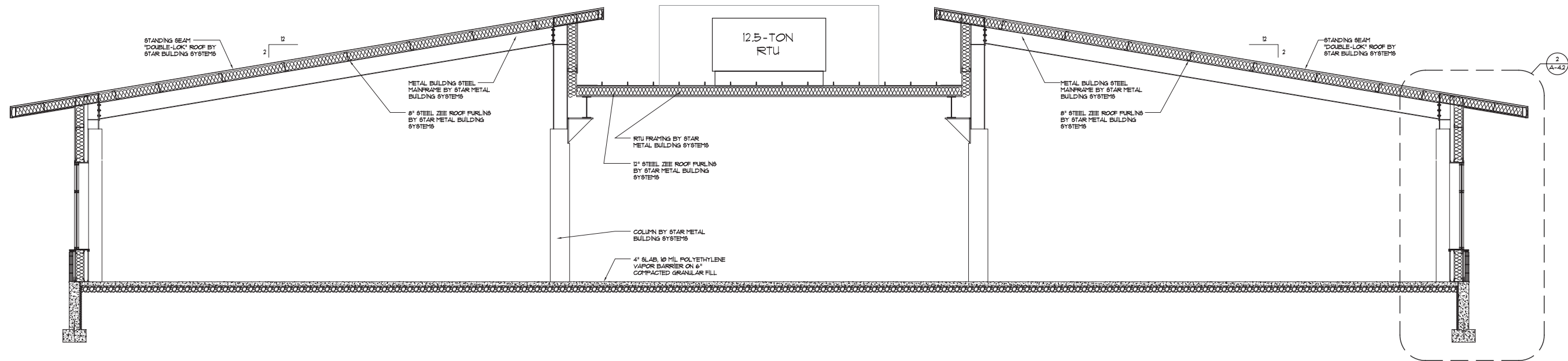
2 NORTH ELEVATION
A-2.1 SCALE: 1/8" = 1'-0"



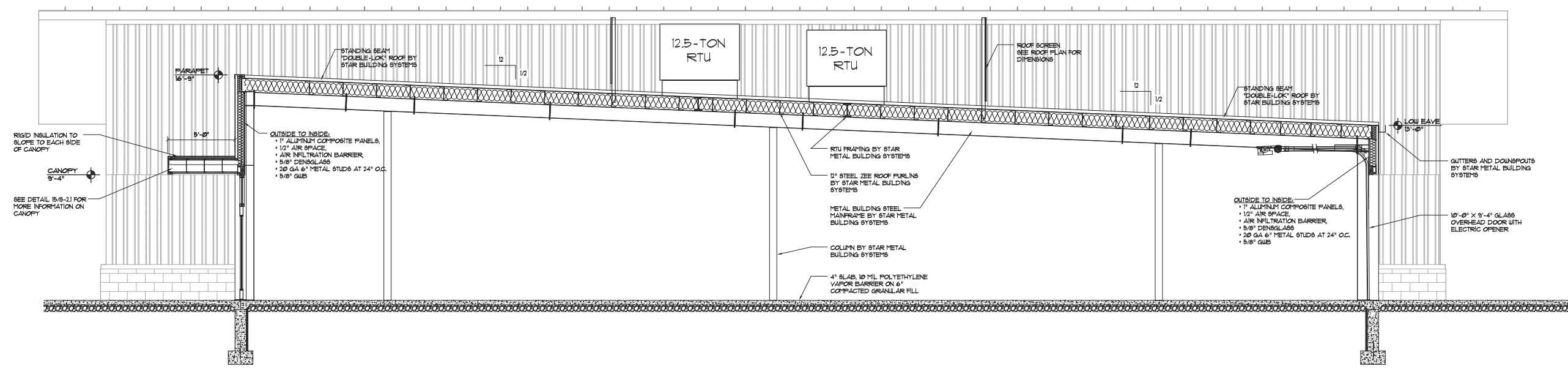
3 EAST ELEVATION
A-2.1 SCALE: 1/8" = 1'-0"



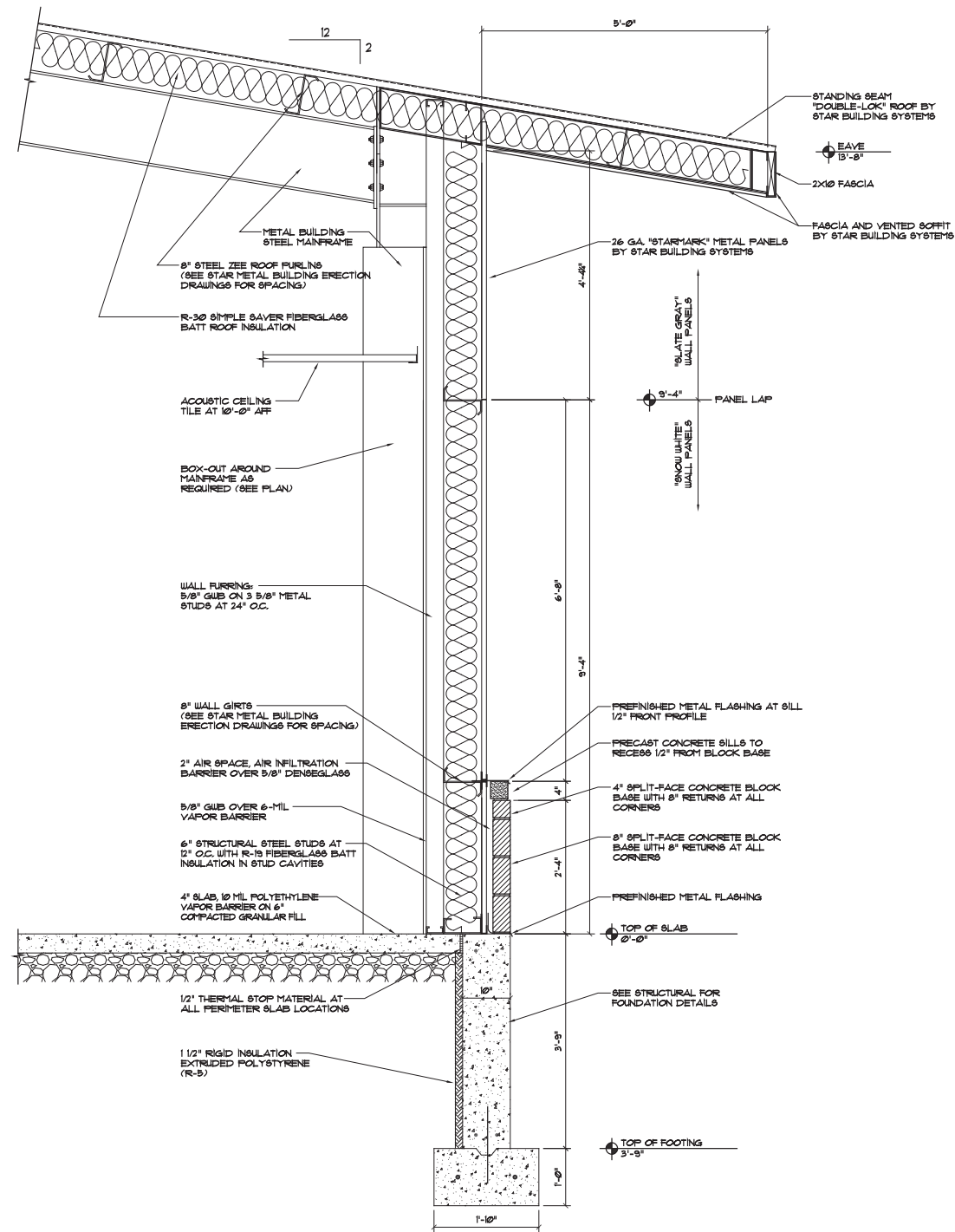
4 WEST ELEVATION
A-2.1 SCALE: 1/8" = 1'-0"



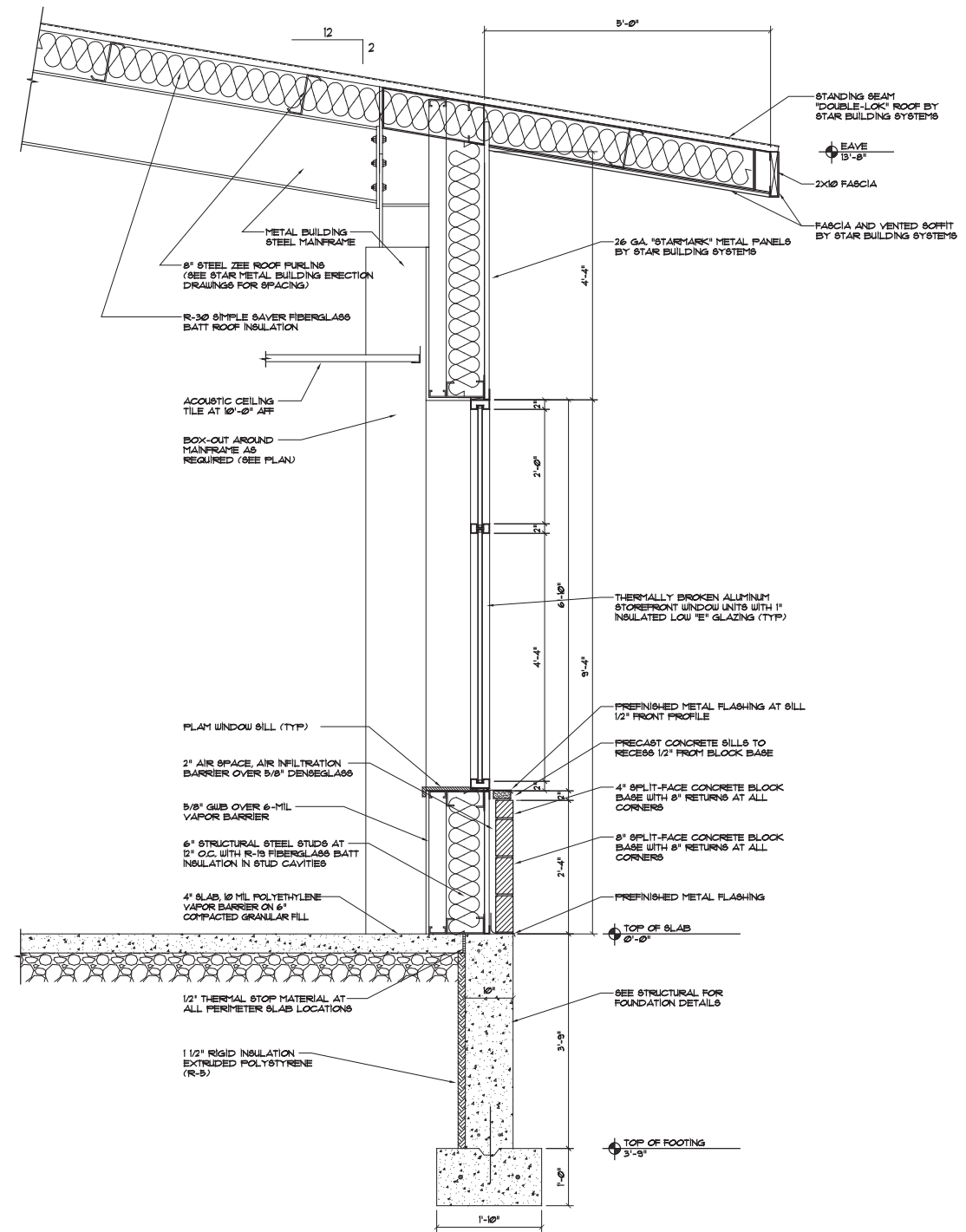
1 BUILDING SECTION
A-4.1 SCALE: 1/4" = 1' - 0"



2 BUILDING SECTION
A-4.1 SCALE: 1/4" = 1' - 0"



1 TYPICAL WALL SECTION
SCALE: 3/4" = 1' - 0"



2 TYPICAL WALL SECTION
SCALE: 3/4" = 1' - 0"