

ELEVATION FROM FIRE ALLEY
SCALE: 1/4" = 1'



ELEVATION FROM COMMON AREA
SCALE: 1/4" = 1'



ELEVATION AT FRONT ENTRY
SCALE: 1/4" = 1'

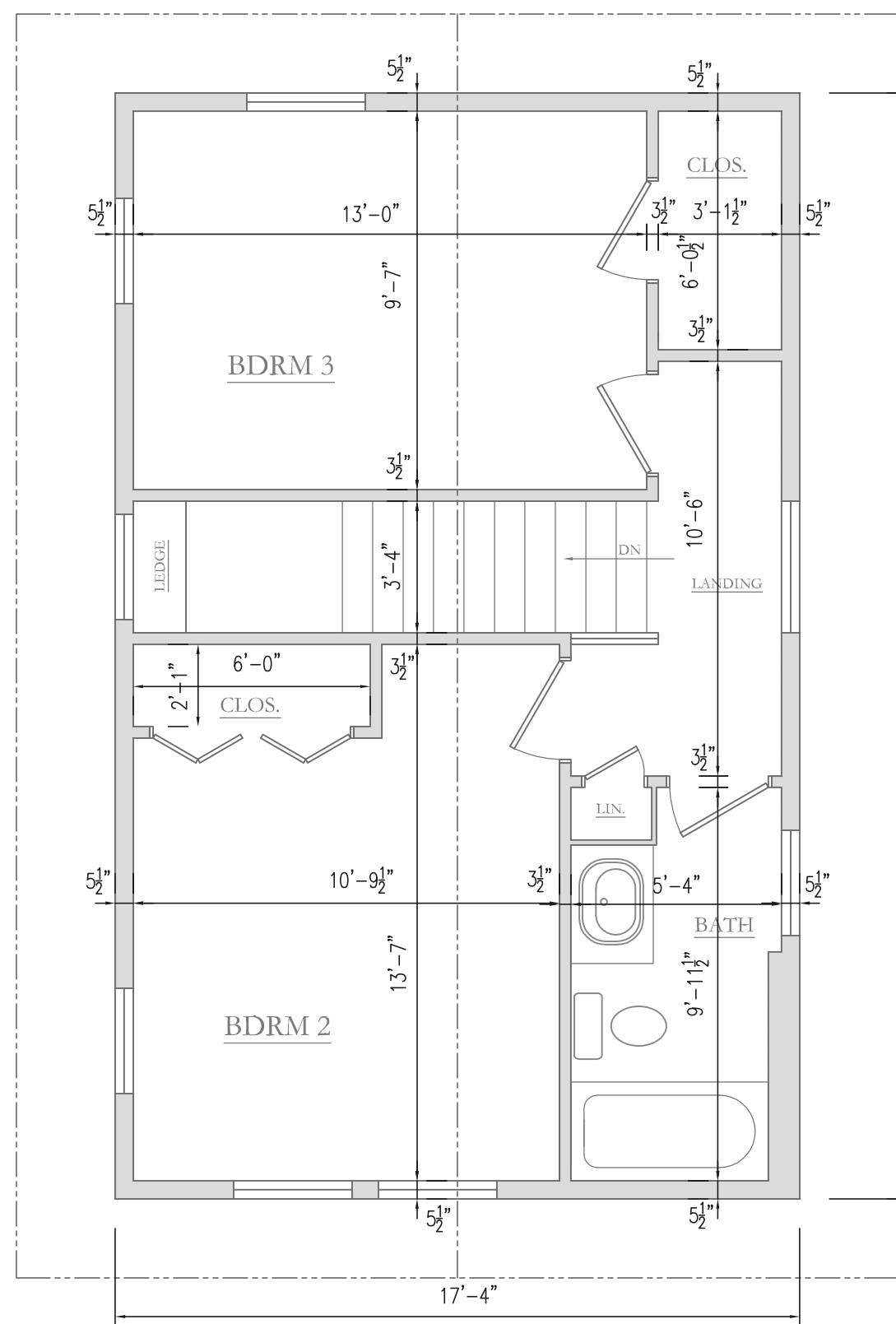


STREET ELEVATION
SCALE: 1/4" = 1'

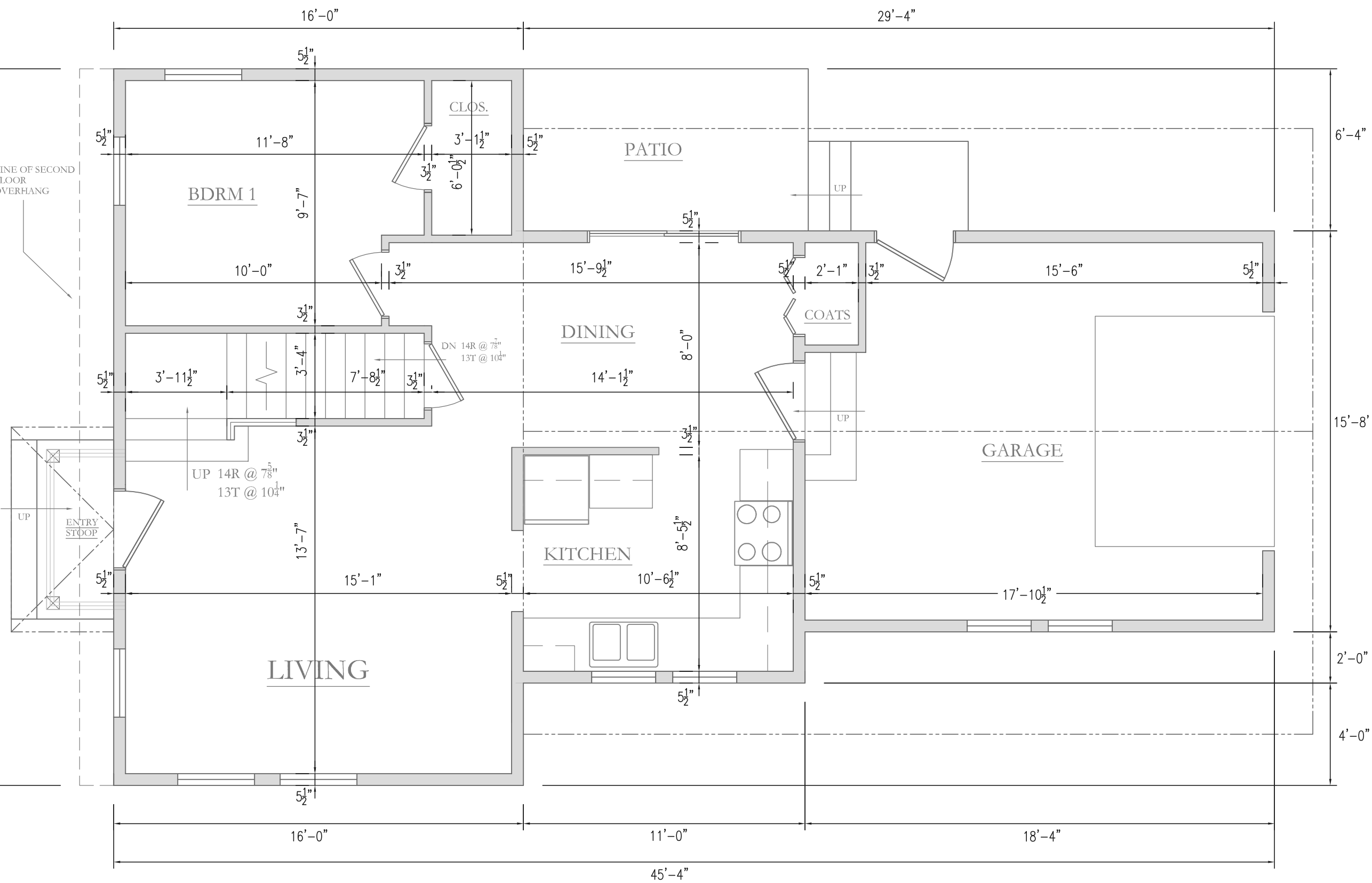
Unit Type Proposal for Northport Commons

Habitat for Humanity of Dane County
1014 Fiedler Lane, #29
Madison, WI. 53725

608.255.1549



SECOND FLOOR PLAN



GROUND FLOOR PLAN

SCALE: 1/4" = 1'

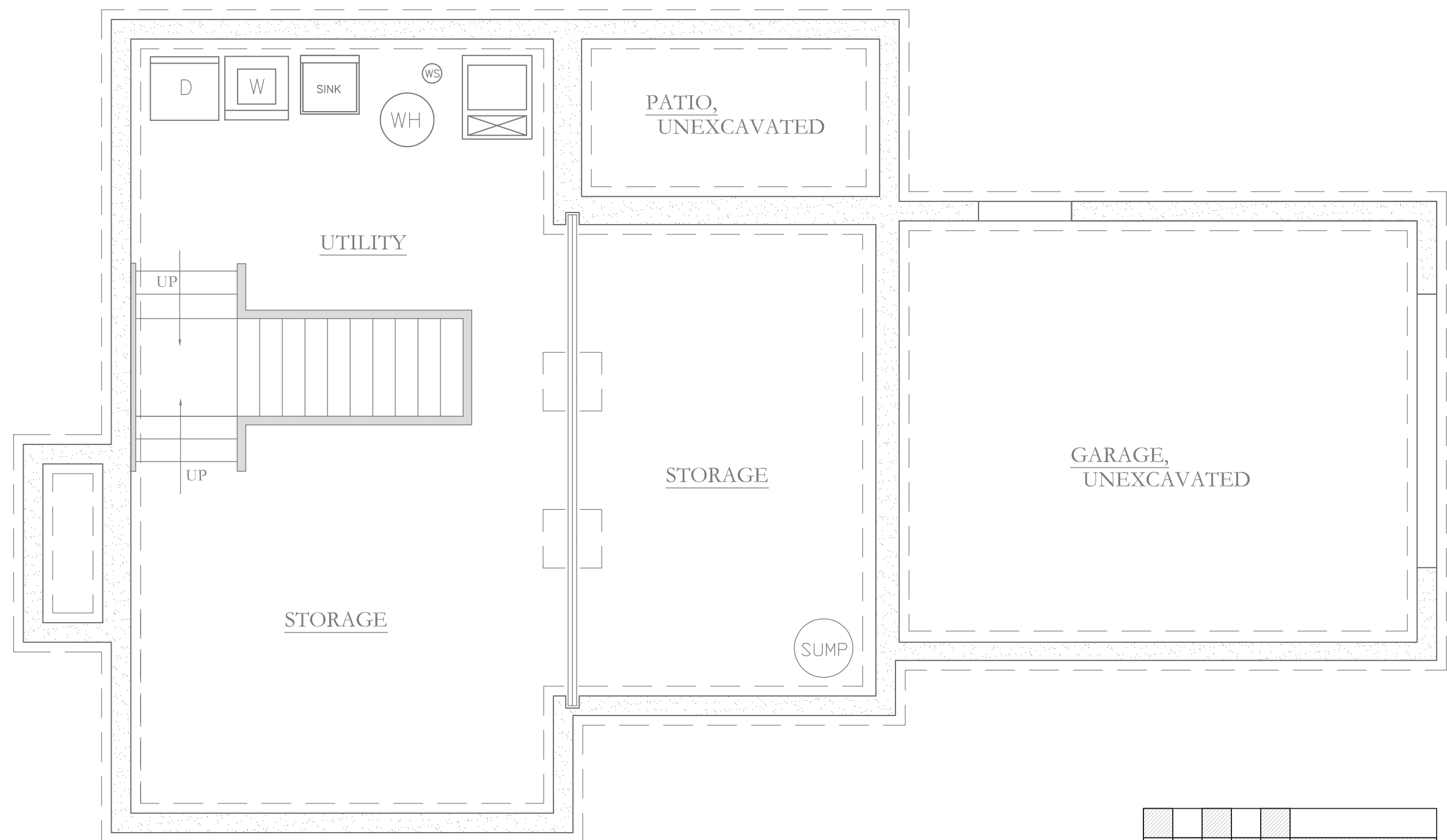
Unit Type Proposal for Northport Commons

3 bedroom, single family home

Ground floor: 654 SF
 Second floor: 485 SF
 1134 SF Total

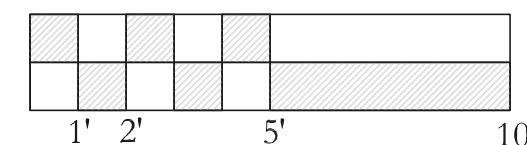
Habitat for Humanity of Dane County
 1014 Fiedler Lane, #29
 Madison, WI. 53725

608.255.1549



FOUNDATION PLAN

SCALE: 1/4" = 1'



File: M:\HH1708\HH1708 Site Plan.dwg User: alearn Plotdate: Dec 16, 2008 1:06pm Xref:



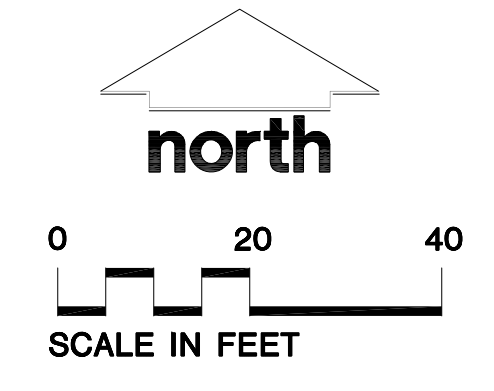
LEGEND (PROPOSED)

---	PROPERTY LINE
---	EXISTING 1 FOOT CONTOUR
---	EXISTING 5 FOOT CONTOUR
---	EXISTING STORM SEWER
---	EXISTING SANITARY SEWER
---	EXISTING WATER MAIN
---	LIMITS OF DISTURBANCE
○	EXISTING TREE

TO OBTAIN LOCATIONS OF PARTICIPANT UNDERGROUND UTILITIES BEFORE YOU DIG IN WISCONSIN

CALL DIGGERS HOTLINE
1-800-242-8511 TOLL FREE
WISCONSIN STATE SERVICE HELPLINE/1-800-955-6868
THREE (3) WORK DAYS NOTICE BEFORE YOU EXCAVATE

THE INFORMATION SHOWN ON THIS DRAWING CONCERNING THE LOCATION OF UNDERGROUND UTILITIES IS NOT GUARANTEED TO BE ACCURATE. THE CONTRACTOR IS RESPONSIBLE FOR VERIFYING THE LOCATION OF UNDERGROUND UTILITIES. THE CONTRACTOR SHALL BE RESPONSIBLE FOR VERIFYING THE LOCATION OF UNDERGROUND UTILITIES. THE CONTRACTOR SHALL BE RESPONSIBLE FOR VERIFYING THE LOCATION OF UNDERGROUND UTILITIES. THE CONTRACTOR SHALL BE RESPONSIBLE FOR VERIFYING THE LOCATION OF UNDERGROUND UTILITIES.



- PLANNING & DEVELOPMENT
- CIVIL ENGINEERING
- TRANSPORTATION ENGINEERING
- LANDSCAPE ARCHITECTURE
- SURVEYING AND MAPPING
- CONSTRUCTION MANAGEMENT

MADISON REGIONAL OFFICE
161 Horizon Drive
Suite 101
Verona, Wisconsin 53593
(608) 848-5060

MILWAUKEE REGIONAL OFFICE
N22 W2931 Nancy Court
Suite 3
Waukesha, Wisconsin 53186
(262) 513-0666

PREPARED FOR:
Habitat for Humanity
PO Box 258128
Madison, WI 53725-8128

PROJECT
The Park Homes at Northport Commons
942 Northport Drive
Madison, WI

Although every effort has been made in preparing these plans and checking them for accuracy, the contractor and subcontractors must check all details and dimensions of their trade and be responsible for the same.
These plans and designs are copyright protected and may not be used in whole or in part without the written consent of Jenkins Survey and Design, Inc.

ITEM	DATE
Drawn: SCL	12-17-08
Checked:	
Approved:	

SEAL/SIGNATURE

SHEET TITLE
Existing Site Plan

SHEET NUMBER
C-1.0

JSD PROJECT NUMBER
HH1708

JSD PROJECT FILE
Task1

SCALE
1"=20'-0"

Although every effort has been made in preparing these plans and checking them for accuracy, the contractor and subcontractors must check all details and dimensions of their trade and be responsible for the same.

These plans and designs are copyright protected and may not be used in whole or in part without the written consent of Jenkins Survey and Design, Inc.

ITEM	DATE
Drawn: SCL/GVP	12-17-08
Checked:	
Approved:	

SEAL/SIGNATURE

SHEET TITLE
Site & Utility Plan

SHEET NUMBER
C-2.0

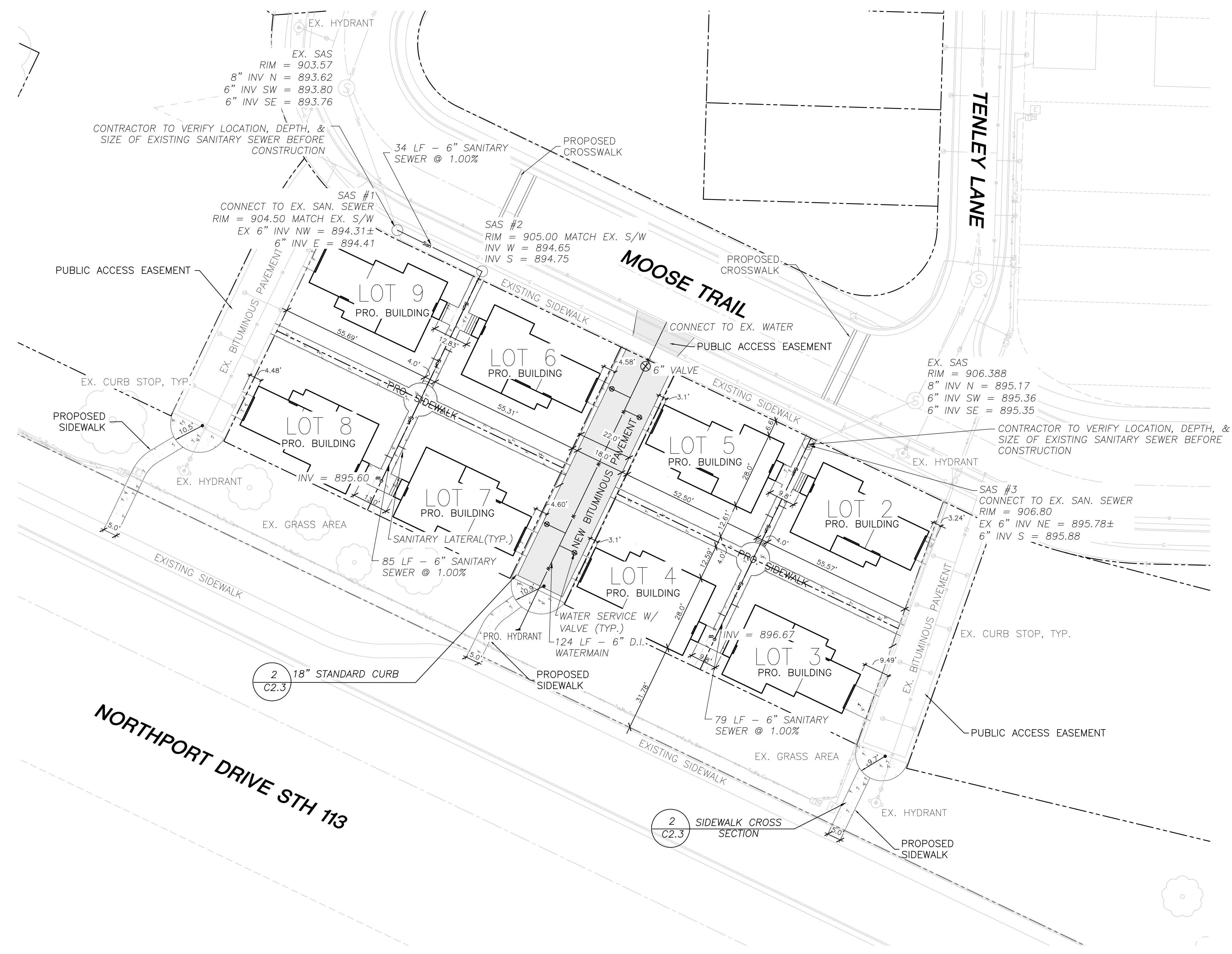
JSD PROJECT NUMBER
 HH1708

JSD PROJECT FILE
 Task1

SCALE
 1"=20'-0"

LEGEND (PROPOSED)

- PROPERTY LINE
- STORM SEWER
- SANITARY SEWER
- WATERMAIN
- ▭ PAVEMENT
- ▭ CONCRETE PAVEMENT
- CLEAN OUT

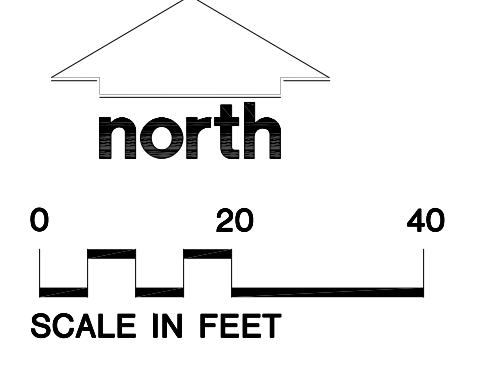


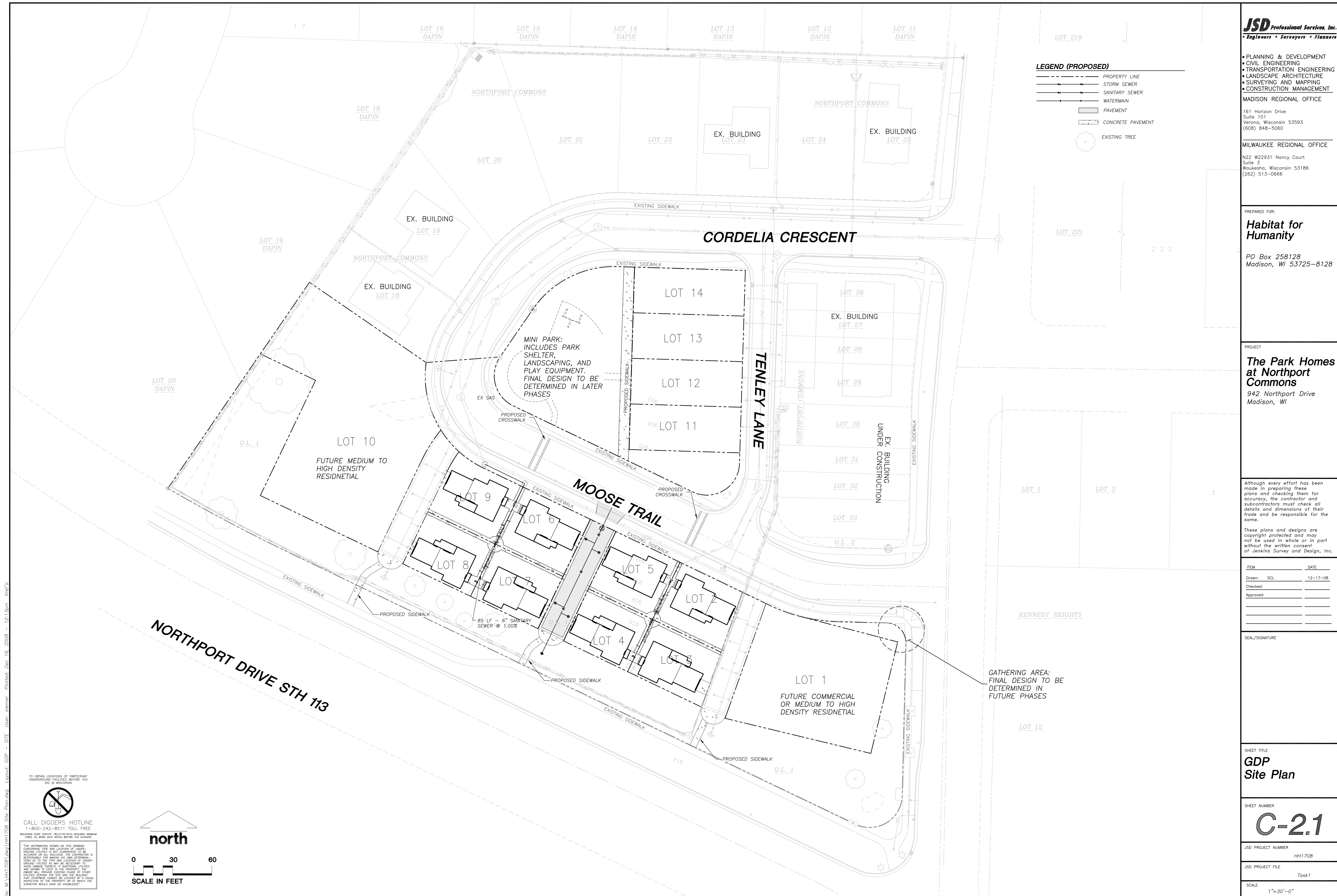
TO OBTAIN LOCATIONS OF PARTICIPANT UNDERGROUND FACILITIES BEFORE YOU DIG IN WISCONSIN



CALL DIGGERS HOTLINE
 1-800-242-8511 TOLL FREE
 WISCONSIN STATE STATUTE, REGISTRATION REQUIRED, WORKMAN THREE (3) WORK DAYS BEFORE YOU DIG

THE INFORMATION SHOWN ON THIS DRAWING CONCERNING THE LOCATION OF UNDERGROUND UTILITIES IS NOT GUARANTEED BY THE CONTRACTOR OR ANY OTHER PARTY. THE CONTRACTOR IS RESPONSIBLE FOR VERIFYING THE LOCATION AND DEPTH OF ALL UTILITIES BEFORE CONSTRUCTION. THE CONTRACTOR SHALL BE RESPONSIBLE FOR OBTAINING ALL NECESSARY PERMITS AND FOR PROTECTING ALL UTILITIES. THE CONTRACTOR SHALL BE RESPONSIBLE FOR OBTAINING ALL NECESSARY PERMITS AND FOR PROTECTING ALL UTILITIES. THE CONTRACTOR SHALL BE RESPONSIBLE FOR OBTAINING ALL NECESSARY PERMITS AND FOR PROTECTING ALL UTILITIES.





JSD Professional Services, Inc.
Engineers • Surveyors • Planners

- PLANNING & DEVELOPMENT
- CIVIL ENGINEERING
- TRANSPORTATION ENGINEERING
- LANDSCAPE ARCHITECTURE
- SURVEYING AND MAPPING
- CONSTRUCTION MANAGEMENT

MADISON REGIONAL OFFICE
161 Horizon Drive
Suite 101
Verona, Wisconsin 53593
(608) 848-5060

MILWAUKEE REGIONAL OFFICE
N22 W22931 Nancy Court
Suite 3
Waukesha, Wisconsin 53186
(262) 513-0666

PREPARED FOR:
Habitat for Humanity
PO Box 258128
Madison, WI 53725-8128

PROJECT
The Park Homes at Northport Commons
942 Northport Drive
Madison, WI

Although every effort has been made in preparing these plans and checking them for accuracy, the contractor and subcontractors must check all details and dimensions of their trade and be responsible for the same.

These plans and designs are copyright protected and may not be used in whole or in part without the written consent of Jenkins Survey and Design, Inc.

ITEM	DATE
Drawn: SCL	12-17-08
Checked:	
Approved:	

SEAL/SIGNATURE

SHEET TITLE
GDP Site Plan

SHEET NUMBER
C-2.1

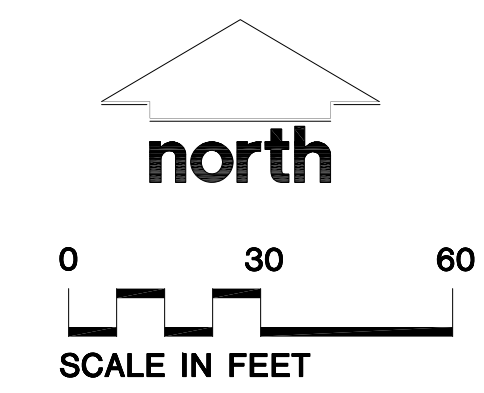
JSD PROJECT NUMBER: HH1708
JSD PROJECT FILE: Task1
SCALE: 1"=30'-0"

TO OBTAIN LOCATIONS OF PARTICIPANT UNDERGROUND FACILITIES BEFORE YOU DIG IN WISCONSIN

CALL DIGGERS HOTLINE
1-800-242-8511 TOLL FREE

WISCONSIN STATE SECURE (820)75751341 REQUIRES MINIMUM THREE (3) WORK DAYS NOTICE BEFORE YOU DIG

THE INFORMATION SHOWN ON THIS DRAWING CONCERNING TYPE AND LOCATION OF UNDERGROUND UTILITIES IS NOT GUARANTEED TO BE ACCURATE. THE CONTRACTOR IS RESPONSIBLE FOR MAKING HIS OWN DETERMINATIONS AS TO THE TYPE AND LOCATION OF UNDERGROUND UTILITIES AS MAY BE NECESSARY FOR HIS WORK. THE CONTRACTOR IS RESPONSIBLE FOR OBTAINING ALL NECESSARY PERMITS AND CONSENTS FROM ALL AFFECTED AGENCIES AND OWNERS OF UTILITIES. THE CONTRACTOR SHALL PROTECT EXISTING UTILITIES AND SHALL BE RESPONSIBLE FOR ANY DAMAGE TO UTILITIES. THE CONTRACTOR SHALL BE RESPONSIBLE FOR ANY DAMAGE TO UTILITIES. THE CONTRACTOR SHALL BE RESPONSIBLE FOR ANY DAMAGE TO UTILITIES.



File: MA_VH1708.dwg User: ssterner Printed: Dec 16, 2008 - 12:13pm Xref: s

ITEM	DATE
Drawn: SCL/GVP	12-17-08
Checked:	
Approved:	

SEAL/SIGNATURE

SHEET TITLE
Grading & Erosion Control Plan

SHEET NUMBER
C-3.0

JSD PROJECT NUMBER
 HH170B

JSD PROJECT FILE
 Task1

SCALE
 1"=20'-0"

NOTE:
 BUILDING CORNERS ARE APPROXIMATE AND FOR GENERAL BUILDING FOOTPRINT ONLY. REFER TO FOUNDATION PLAN FOR DIMENSIONS.
 LIMITS OF DISTURBANCE = 29,725 SQFT SQFT

LEGEND (PROPOSED)

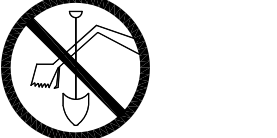
- PROPERTY LINE
- - - 29' PROPOSED 1 FOOT CONTOUR
- - - 30' PROPOSED 5 FOOT CONTOUR
- STORM SEWER
- SANITARY SEWER
- WATERMAIN
- PAVEMENT
- CONCRETE PAVEMENT
- SILT FENCE
- LIMITS OF DISTURBANCE
- SPOT ELEVATION
- EP - EDGE OF PAVEMENT
- FFE - FINISHED FLOOR ELEVATION
- BC - BACK OF CURB
- SW - SIDEWALK
- FLOW ARROW

- GENERAL NOTES**
- NO SITE GRADING OUTSIDE OR DOWNSLOPE OF PROPOSED SILT FENCE LOCATION.
 - ALL WORK IN THE ROW AND PUBLIC EASEMENTS SHALL BE IN ACCORDANCE WITH THE CITY OF MADISON REQUIREMENTS, AND THE STANDARD SPECIFICATIONS FOR SEWER AND WATER CONSTRUCTION IN WISCONSIN LATEST EDITION.
 - JSD SHALL BE HELD HARMLESS AND DOES NOT WARRANT ANY DEVIATIONS BY THE OWNER/CONTRACTOR FROM THE APPROVED CONSTRUCTION PLANS THAT MAY RESULT IN DISCIPLINARY ACTIONS BY ANY OR ALL REGULATORY AGENCIES.
 - THE CONTRACTOR SHALL COORDINATE GRADING AND UTILITY CONNECTIONS WITH HABITAT FOR HUMANITY CONSTRUCTION.

- CONSTRUCTION SITE EROSION CONTROL REQUIREMENTS**
- ALL EROSION CONTROL MEASURES SHALL BE CONSTRUCTED AND MAINTAINED BY THE CONTRACTOR IN ACCORDANCE WITH THE CONSTRUCTION SITE EROSION & SEDIMENT CONTROL TECHNICAL STANDARDS. IT IS THE CONTRACTOR'S RESPONSIBILITY TO OBTAIN A COPY OF THESE STANDARDS.
 - INSTALL EROSION CONTROL MEASURES PRIOR TO ANY SITE WORK, INCLUDING GRADING OR DISTURBANCE OF EXISTING SURFACE MATERIALS AS SHOWN ON PLAN. MODIFICATIONS TO SEDIMENT CONTROL DESIGN MAY BE CONDUCTED TO MEET UNFORESEEN FIELD CONDITIONS IF MODIFICATIONS CONFORM TO WDNR TECHNICAL STANDARDS.
 - INSPECTIONS AND MAINTENANCE OF ALL EROSION CONTROL MEASURES SHALL BE ROUTINE (ONCE PER WEEK MINIMUM) TO ENSURE PROPER FUNCTION OF EROSION CONTROLS AT ALL TIMES. EROSION CONTROL MEASURES ARE TO BE IN WORKING ORDER AT THE END OF EACH WORK DAY.
 - INSPECT EROSION CONTROL MEASURES AFTER EACH 1/2" OR GREATER RAINFALL. REPAIR ANY DAMAGE OBSERVED DURING THE INSPECTION.
 - EROSION CONTROL MEASURES SHALL BE REMOVED ONLY AFTER SITE CONSTRUCTION IS COMPLETE WITH ALL SOIL SURFACES HAVING AN ESTABLISHED VEGETATIVE COVER.
 - INSTALL A TRACKING PAD, 50' LONG AND NO LESS THAN 12" THICK BY USE OF 3" CLEAR STONE. TRACKING PADS ARE TO BE MAINTAINED BY THE CONTRACTOR IN A CONDITION WHICH WILL PREVENT THE TRACKING OF MUD OR DRY SEDIMENT ONTO THE ADJACENT PUBLIC STREETS AFTER EACH WORKING DAY OR MORE FREQUENTLY AS REQUIRED BY THE CITY OF MADISON.
 - INSTALL EROSION CONTROLS ON THE DOWNSTREAM SIDE OF STOCKPILES.
 - EROSION CONTROL FOR UTILITY CONSTRUCTION (STORM SEWER, SANITARY SEWER, WATER MAIN, ETC.):
 - PLACE EXCAVATED TRENCH MATERIAL ON THE HIGH SIDE OF THE TRENCH.
 - BACKFILL, COMPACT, AND STABILIZE THE TRENCH IMMEDIATELY AFTER PIPE CONSTRUCTION.
 - DISCHARGE TRENCH WATER INTO A SEDIMENTATION BASIN OR FILTERING TANK IN ACCORDANCE WITH THE DEWATERING TECHNICAL STANDARD NO. 1061 PRIOR TO RELEASE INTO THE STORM SEWER, RECEIVING STREAM, OR DRAINAGE DITCH.
 - STONE CHECK DAMS SHALL BE PLACED IN FRONT OF SILT FENCING IN ANY LOW AREA.
 - APPLY ANIONIC POLYMER TO DISTURBED AREAS IF EROSION BECOMES PROBLEMATIC.
 - ALL SLOPES EXCEEDING 5:1 (20%), CONVEYING STORM WATER RUNOFF SHALL BE STABILIZED WITH CLASS II, TYPE B EROSION MATTING.
 - ADDITIONAL EROSION CONTROL MEASURES, AS REQUESTED BY STATE INSPECTORS, LOCAL INSPECTORS, AND/OR ENGINEER SHALL BE INSTALLED WITHIN 24 HOURS OF REQUEST.
 - CONTRACTOR SHALL PROTECT ADJACENT PROPERTIES WITH SILT FENCING FOR EROSION CONTROL UNTIL CONSTRUCTION IS COMPLETED.
 - ALL STORM SEWER STRUCTURES SHALL HAVE INLET PROTECTION TYPE D, STANDARD DETAILS FOR INLET PROTECTION ARE LOCATED IN THE WISDOT FACILITIES DEVELOPMENT MANUAL, CHAPTER 16, SDD NUMBER B610-2.
 - CONTRACTOR/OWNER SHALL FILE A NOTICE OF TERMINATION UPON VEGETATIVE STABILIZATION AND/OR PROPERTY SALE IN ACCORDANCE WITH WDNR AND WDCOMM REQUIREMENTS.
 - PROTECT ALL INLETS WITH TYPE D INLET PROTECTION DURING CONSTRUCTION.

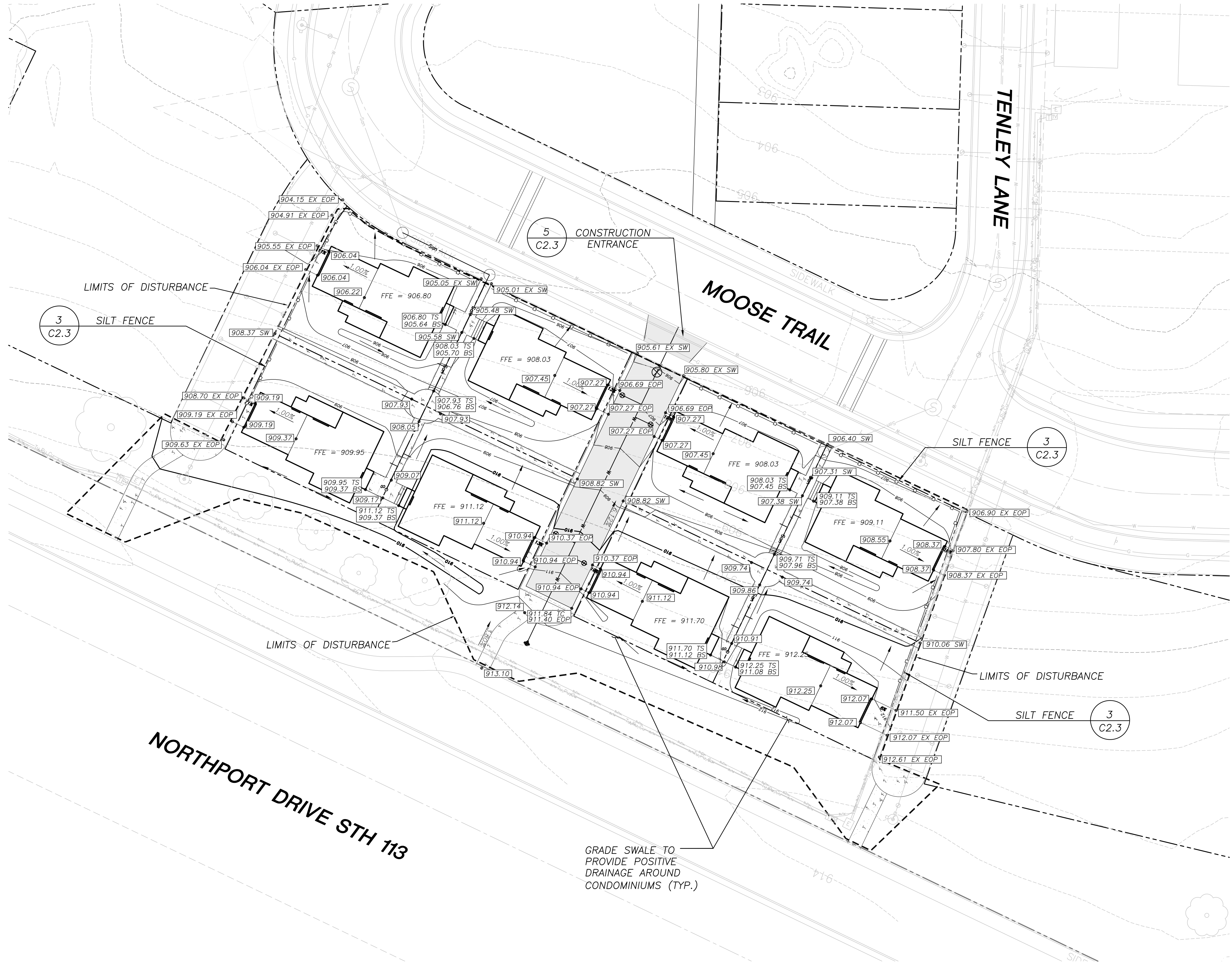
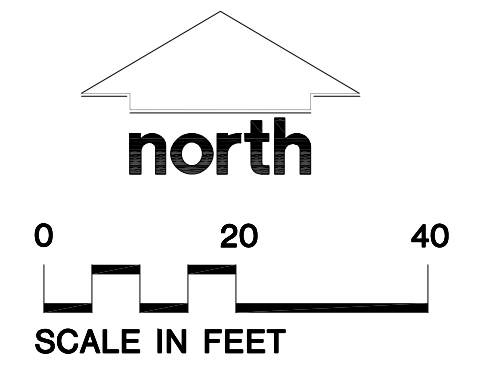
- GRADING AND SEEDING NOTES**
- ALL DISTURBED AREAS SHALL BE SEEDED AND MULCHED IMMEDIATELY FOLLOWING GRADING ACTIVITIES. THIS MUST BE COORDINATED WITH HABITAT FOR HUMANITY AND THE HABITAT "GREEN TEAM".
 - ALL PROPOSED GRADES SHOWN ARE FINISHED GRADES. CONTRACTOR SHALL VERIFY ALL GRADES, MAKE SURE ALL AREAS DRAIN PROPERLY AND SHALL REPORT ANY DISCREPANCIES TO THE ENGINEER PRIOR TO COMPLETION.
 - CONTRACTOR SHALL SCARIFY ALL COMPACTED PERVIOUS AREAS PRIOR TO SEEDING AND MULCHING.
 - BUILDING CONTRACTOR/HABITAT FOR HUMANITY SHALL ENSURE THAT ALL STORMWATER DRAINS AWAY FROM ALL BUILDING FOUNDATIONS DURING FINAL RESTORATION.

TO OBTAIN LOCATIONS OF PARTICIPANT UNDERGROUND FACILITIES BEFORE YOU DIG IN WISCONSIN

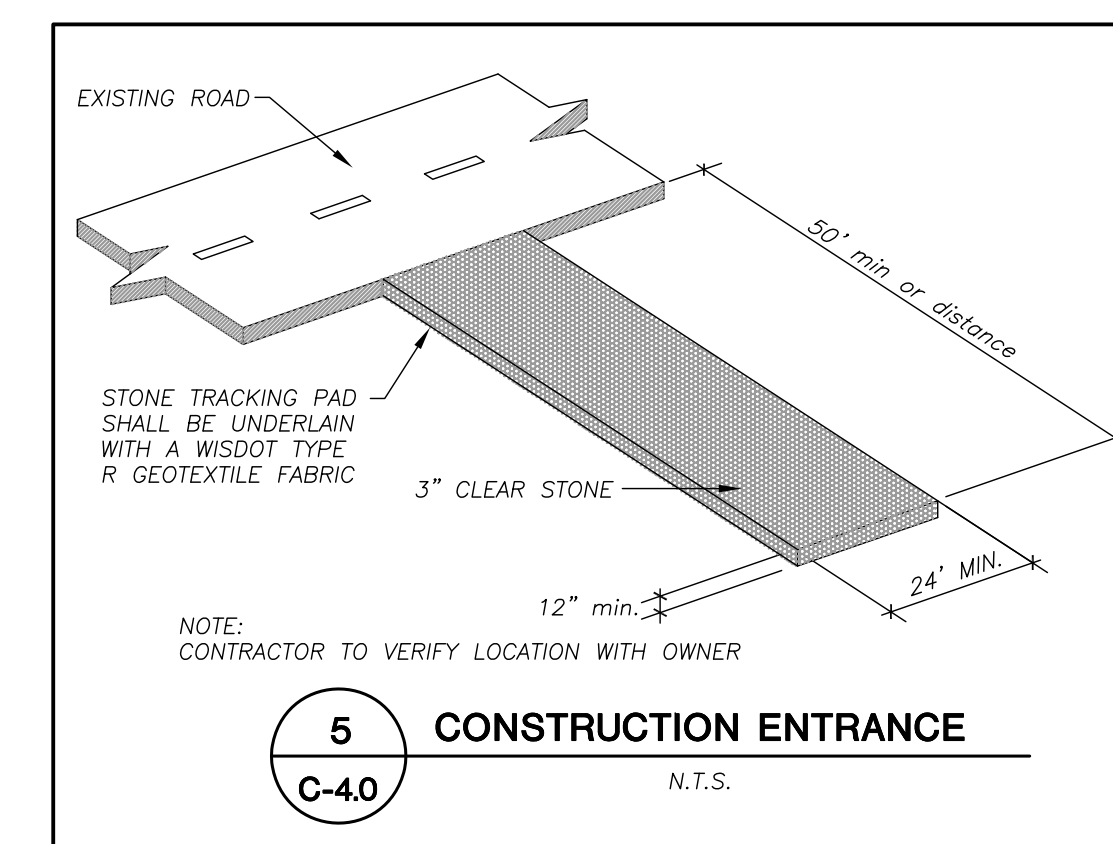
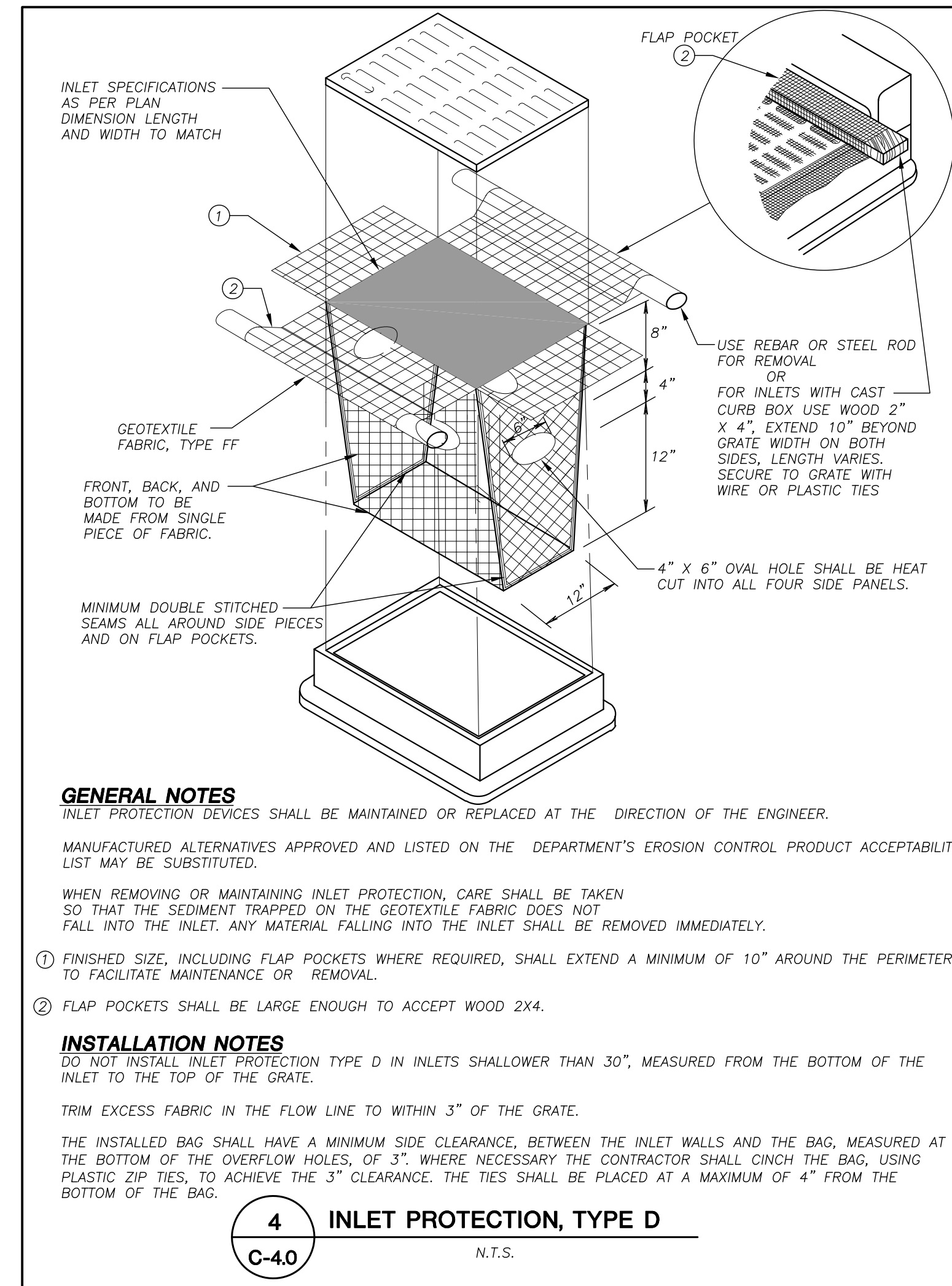
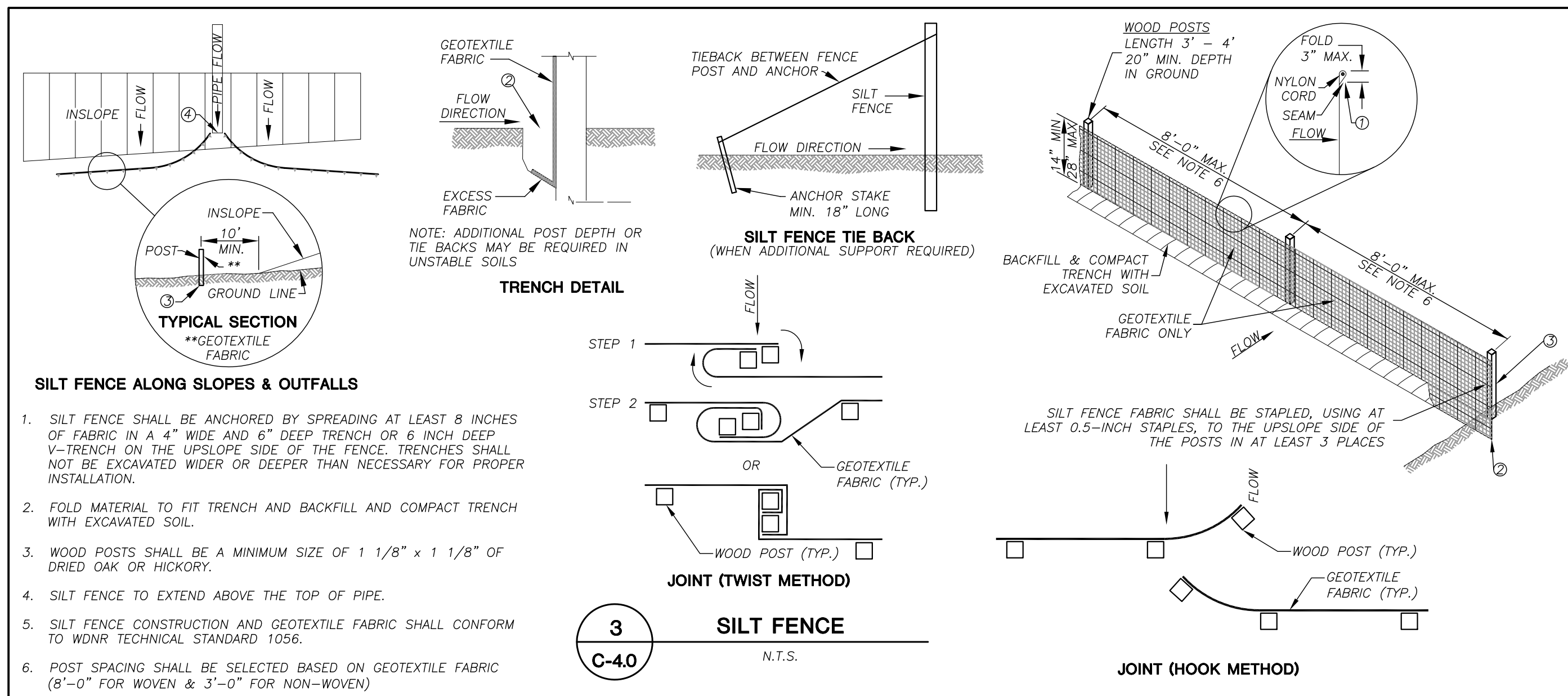
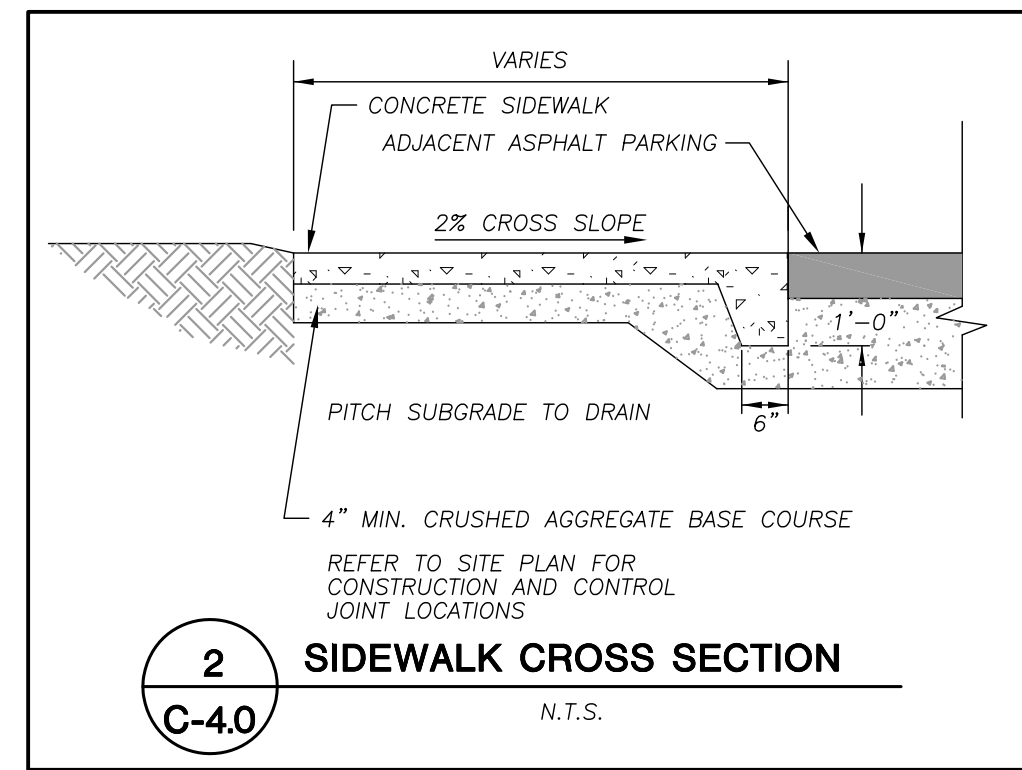
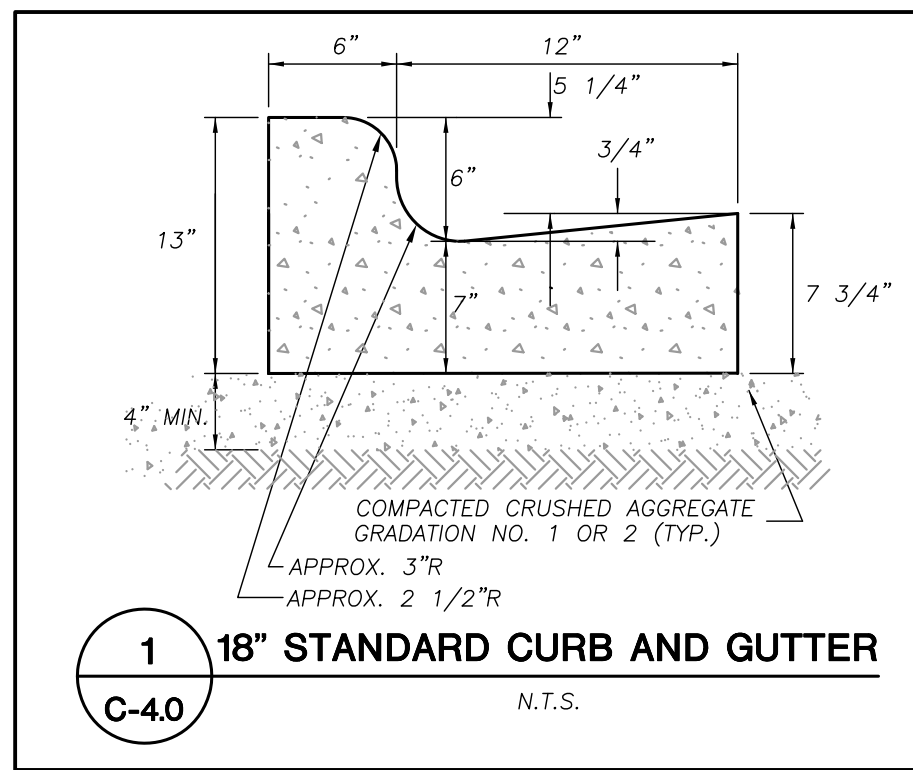


CALL DIGGERS HOTLINE
 1-800-242-8511 TOLL FREE
 WISCONSIN STATE STATUTE REGULATIONS REQUIRES MINIMUM THREE (3) WORK DAYS NOTICE BEFORE YOU DIG

THE INFORMATION SHOWN ON THIS DRAWING CONCERNING TYPE AND LOCATION OF UNDERGROUND UTILITIES IS NOT GUARANTEED TO BE ACCURATE OR COMPLETE. THE CONTRACTOR IS RESPONSIBLE FOR VERIFYING THE LOCATION AND DEPTH OF ALL UTILITIES AND FOR OBTAINING NECESSARY PERMITS AND RECORDS PRIOR TO CONSTRUCTION. THE CONTRACTOR SHALL PROTECT ALL UTILITIES AND SHALL BE RESPONSIBLE FOR ANY DAMAGE TO UTILITIES. THE CONTRACTOR SHALL BE RESPONSIBLE FOR OBTAINING RECORDS FROM THE CITY OF MADISON AND THE WISCONSIN STATE DEPARTMENT OF TRANSPORTATION AND INFRASTRUCTURE. THE CONTRACTOR SHALL BE RESPONSIBLE FOR OBTAINING RECORDS FROM THE WISCONSIN STATE DEPARTMENT OF TRANSPORTATION AND INFRASTRUCTURE. THE CONTRACTOR SHALL BE RESPONSIBLE FOR OBTAINING RECORDS FROM THE WISCONSIN STATE DEPARTMENT OF TRANSPORTATION AND INFRASTRUCTURE.



File: MA_VH1708_V08.dwg User: sterner Plotted: Dec 16, 2008 12:35pm Xref: 3



ITEM	DATE
Drawn: SCL	12-17-08
Checked:	
Approved:	

SEAL/SIGNATURE

SHEET TITLE
Details Page

SHEET NUMBER
C-4.0

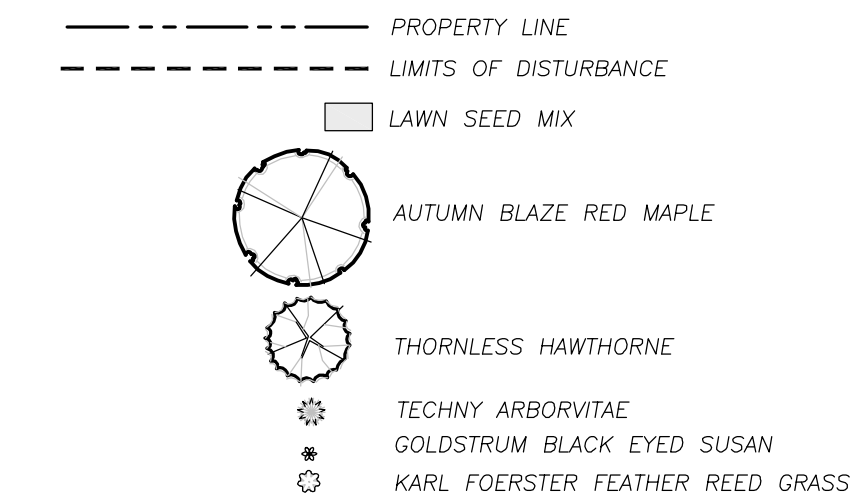
JSD PROJECT NUMBER
HH1708

JSD PROJECT FILE
Task1

SCALE
1"=20'-0"

Quantity	Botanical Name	Common Name	Size	Root	Points
CANOPY TREES					
16	<i>Acer x freemanii</i> 'Autumn Blaze'	Autumn Blaze Red Maple	2" Cal.	B&B	
ORNAMENTAL TREES					
4	<i>Crategeus crus-galli</i> var. <i>inermis</i>	Thornless Hawthorne	1 1/2" Cal.	B&B	
EVERGREEN TREES					
12	<i>Thuja occidentalis</i> 'Techny'	Techny Arborvitae	4' HT.	B&B	
PERENNIALS AND GRASSES					
39	<i>Calamagrostis acutiflorus</i> 'Karl Foerster'	Karl Foerster Feather Reed Grass	1 Gal.	CONT.	
47	<i>Rudbeckia fulgida</i> 'Goldstrum'	Goldstrum Black-eyed Susans	1 Gal.	CONT.	

LEGEND (PROPOSED)

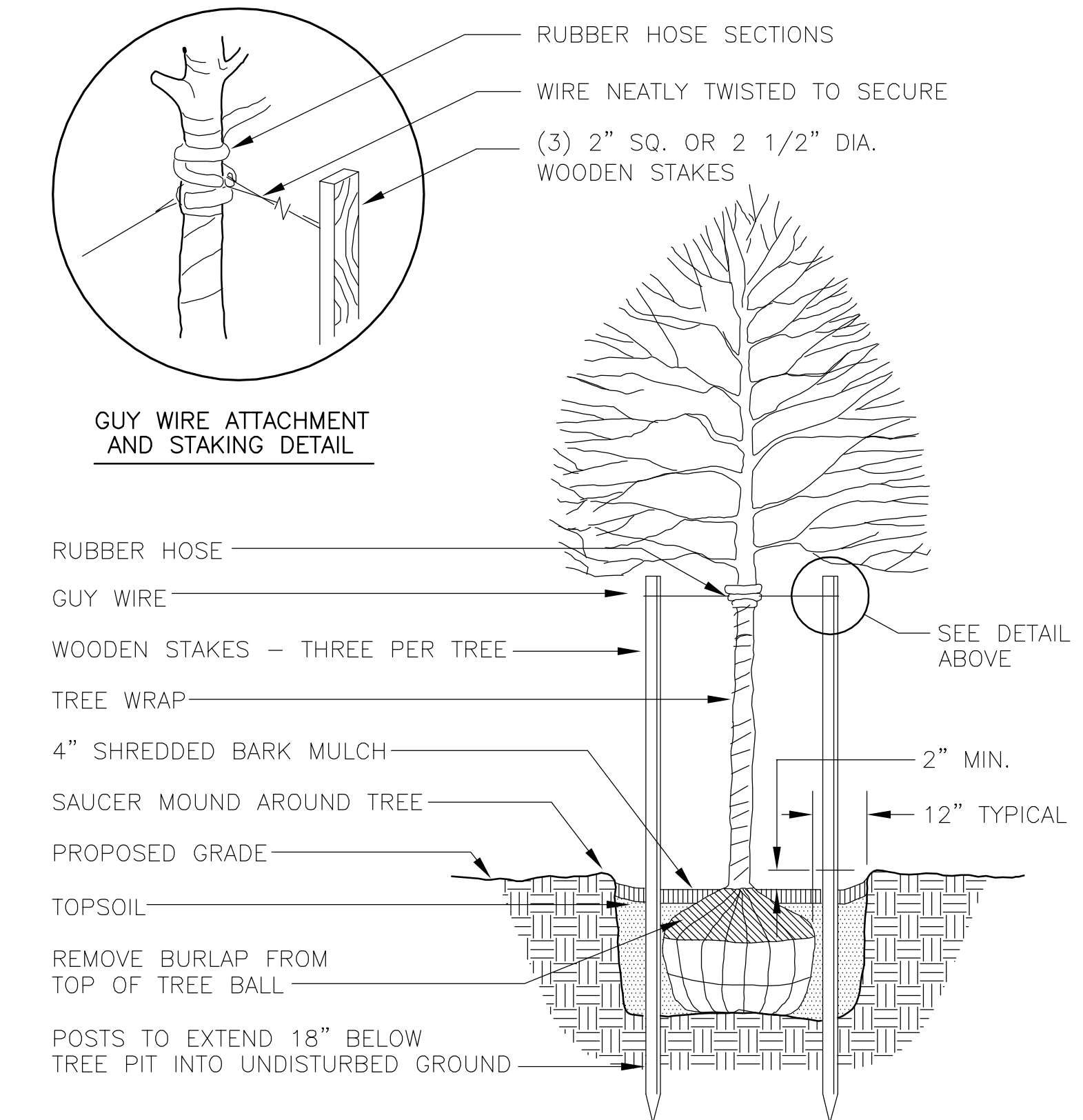


LANDSCAPE NOTES

- LOCATE ALL UTILITIES PRIOR TO CONSTRUCTION. THE CONTRACTOR IS RESPONSIBLE FOR REPAIRING ANY DAMAGE DONE TO UTILITIES.
- CONTRACTOR RESPONSIBLE FOR ADEQUATELY WATERING ALL PLANT MATERIALS INSTALLED UNDER CONTRACT FOR A PERIOD OF ONE YEAR FROM THE DATE OF INSTALLATION.
- ALL LANDSCAPE BEDS TO RECEIVE 4" DEPTH, FINELY SHREDDED, WEED-FREE HARDWOOD BARK MULCH OVER AN APPROVED WOVEN FABRIC WEED BARRIER. GROUPS OF PLANTS TO BE MULCHED IN THEIR ENTIRETY AS ONE BED. ALL TREES NOT INCORPORATED INTO DEFINED PLANTING BEDS TO BE ENCLOSED BY A6" DIA. OF EDGING, WEED BARRIER AND HARDWOOD BARK MULCH.
- PRE-EMERGENT HERBICIDE TO BE APPLIED TO ALL LANDSCAPE BEDS.
- CONDUCT SOIL TEST TO VERIFY FERTILITY OF TOPSOIL, AMMEND SOIL IF pH IS LESS THAN 5.0 OR GREATER THAN 7.5. MAKE OTHER ADJUSTMENTS AS SOIL ANALYSIS INDICATES.
- TOPSOIL TO BE A 4" MINIMUM DEPTH. TOPSOIL TO BE CLEAN FRIABLE LOAM FROM LOCAL SOURCE, FREE FROM STONES OR DEBRIS OVER 3/4" IN DIAMETER, AND FREE FROM HERBICIDES OR OTHER TOXINS.
- PLANT MATERIAL SHALL CONFORM TO THE LATEST VERSION OF THE STANDARD FOR NURSERY STOCK (ANSI 160.1-2004) AND COMPLY WITH APPLICABLE STATE AND FEDERAL LAWS GOVERNING INSPECTION, SHIPPING, SELLING AND HANDLING OF NURSERY STOCK. STOCK SHALL BE HANDLED PROPERLY SO THAT ROOT BALLS ARE NOT LOOSENEED OR ALLOWED TO DRY OUT AND TRUNKS AND BRANCHES ARE NOT DAMAGED.
- PLANTINGS SHALL BE GUARANTEED TO BE IN A HEALTHY AND FLOURISHING CONDITION FOR A PERIOD OF TWELVE (12) MONTHS. ALL TREES SHALL INCLUDE A 2 YEAR STRAIGHTENING GUARANTEE IN LIEU OF STAKING AND GUYING.
- REMOVE RUBBER HOSE, STAKES AND WRAP AFTER TWO YEARS.

RESTORATION NOTES

- SEEDING SHALL BE COORDINATED WITH GRADING CONTRACTOR (SEE GRADING AND EROSION CONTROL PLANS) AND WITH HABITAT FOR HUMANITY AND THE HABITAT 'GREEN TEAM'.



NOTE:
GROUND LINE TO BE THE SAME
IT WAS AT THE NURSERY.

1
L-10

TREE PLANTING DETAIL

N.T.S.

- PLANNING & DEVELOPMENT
- CIVIL ENGINEERING
- TRANSPORTATION ENGINEERING
- LANDSCAPE ARCHITECTURE
- SURVEYING AND MAPPING
- CONSTRUCTION MANAGEMENT

MADISON REGIONAL OFFICE

161 Horizon Drive
Suite 101
Verona, Wisconsin 53593
(608) 848-5060

MILWAUKEE REGIONAL OFFICE

N22 W22931 Nancy Court
Suite 3
Waukesha, Wisconsin 53186
(262) 513-0666

PREPARED FOR:

Habitat for Humanity

PO Box 258128
Madison, WI 53725-8128

PROJECT

The Park Homes at Northport Commons

542 Northport Drive
Madison, WI

Although every effort has been made in preparing these plans and checking them for accuracy, the contractor and subcontractors must check all details and dimensions of their trade and be responsible for the same.

These plans and designs are copyright protected and may not be used in whole or in part without the written consent of Jenkins Survey and Design, Inc.

ITEM	DATE
Drawn: SCL	12-17-08
Checked:	
Approved:	

SEAL/SIGNATURE

SHEET TITLE

Landscape Plan

SHEET NUMBER

L-1.0

JSD PROJECT NUMBER

HH1708

JSD PROJECT FILE

Task1

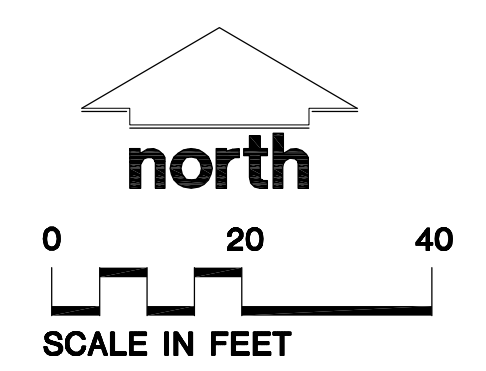
SCALE

TO OBTAIN LOCATIONS OF PARTICIPANT UNDERGROUND FACILITIES BEFORE YOU DIG IN WISCONSIN:

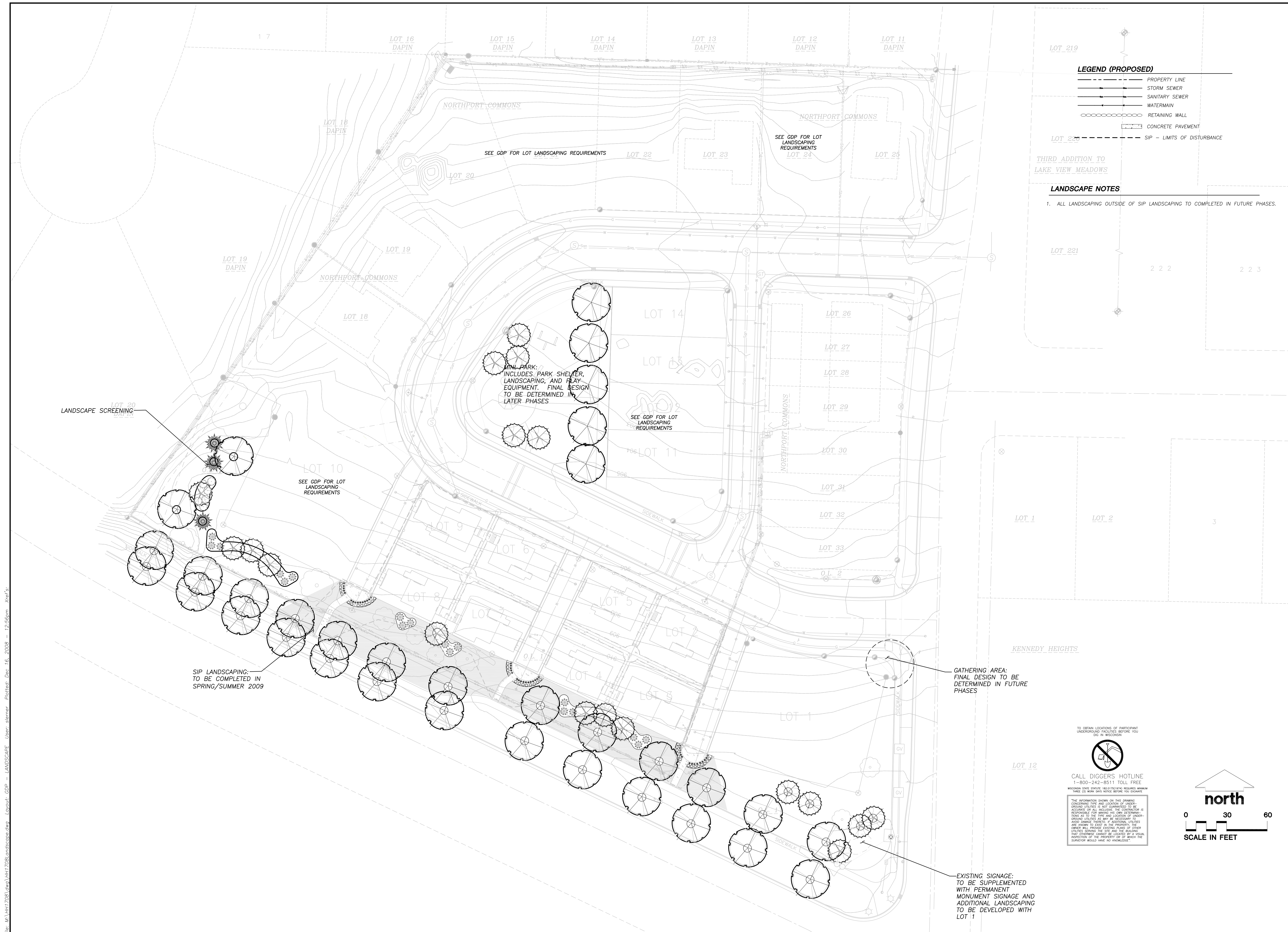


CALL DIGGERS HOTLINE
1-800-242-8511 TOLL FREE
WISCONSIN STATE SERVICE 18251767670 REQUIRED MINIMUM THREE (3) WORK DAYS NOTICE BEFORE YOU EXCAVATE

THE INFORMATION SHOWN ON THIS DRAWING CONCERNING THE TYPE AND LOCATION OF UNDERGROUND UTILITIES IS NOT GUARANTEED TO BE ACCURATE. THE CONTRACTOR IS RESPONSIBLE FOR MAKING HIS OWN DETERMINATIONS AS TO THE TYPE AND LOCATION OF UNDERGROUND UTILITIES AS WELL AS NECESSARY TO AVOID DAMAGE HERETO. ADDITIONAL UTILITIES ARE KNOWN TO EXIST IN THE PROPERTY. THE OWNER HAS PROVIDED EXISTING PLANS OF OTHER UTILITIES SERVING THE SITE AND THE READING THEREOF IS THE RESPONSIBILITY OF THE ARCHITECT. THE ARCHITECT HAS REVIEWED THE INFORMATION AND HAS NO KNOWLEDGE OF ANY OTHER UTILITIES SERVING THE SITE.



File: M:\HH1708.dwg, HH1708.landscape.dwg, Layout: SJP - LANDSCAPE, User: sterner, Plotted: Dec 16, 2008 - 12:45pm, Xref's:



LEGEND (PROPOSED)

- PROPERTY LINE
- STORM SEWER
- SANITARY SEWER
- WATERMAIN
- RETAINING WALL
- CONCRETE PAVEMENT
- SIP - LIMITS OF DISTURBANCE

THIRD ADDITION TO
LAKE VIEW MEADOWS

LANDSCAPE NOTES

1. ALL LANDSCAPING OUTSIDE OF SIP LANDSCAPING TO COMPLETED IN FUTURE PHASES.

MINI PARK:
INCLUDES PARK SHELTER,
LANDSCAPING, AND PLAY
EQUIPMENT. FINAL DESIGN
TO BE DETERMINED IN
LATER PHASES

SIP LANDSCAPING:
TO BE COMPLETED IN
SPRING/SUMMER 2009

GATHERING AREA:
FINAL DESIGN TO BE
DETERMINED IN FUTURE
PHASES

EXISTING SIGNAGE:
TO BE SUPPLEMENTED
WITH PERMANENT
MONUMENT SIGNAGE AND
ADDITIONAL LANDSCAPING
TO BE DEVELOPED WITH
LOT 1

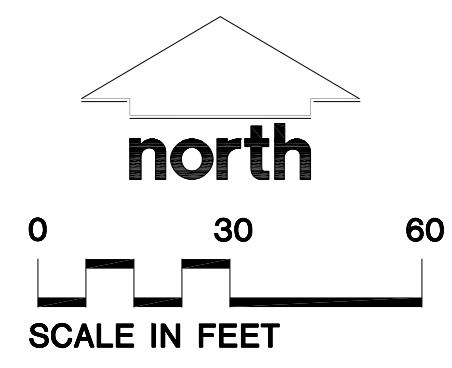
TO OBTAIN LOCATIONS OF PARTICIPANT
UNDERGROUND FACILITIES BEFORE YOU
DIG, IN WISCONSIN:



CALL DIGGERS HOTLINE
1-800-242-8511 TOLL FREE

WISCONSIN STATE SOURCE REGISTRATION REQUIRED MINIMUM
THREE (3) WORK DAYS NOTICE BEFORE YOU EXCAVATE

THE INFORMATION SHOWN ON THIS DRAWING CONCERNING TIME AND LOCATION OF UNDERGROUND UTILITIES IS NOT GUARANTEED TO BE ACCURATE. IT IS THE CONTRACTOR'S RESPONSIBILITY TO VERIFY THE LOCATION OF UTILITIES AS SHOWN ON THIS DRAWING. THE CONTRACTOR SHALL BE RESPONSIBLE FOR VERIFYING THE LOCATION OF UTILITIES AS SHOWN ON THIS DRAWING. THE CONTRACTOR SHALL BE RESPONSIBLE FOR VERIFYING THE LOCATION OF UTILITIES AS SHOWN ON THIS DRAWING. THE CONTRACTOR SHALL BE RESPONSIBLE FOR VERIFYING THE LOCATION OF UTILITIES AS SHOWN ON THIS DRAWING.



- PLANNING & DEVELOPMENT
- CIVIL ENGINEERING
- TRANSPORTATION ENGINEERING
- LANDSCAPE ARCHITECTURE
- SURVEYING AND MAPPING
- CONSTRUCTION MANAGEMENT

MADISON REGIONAL OFFICE
161 Horizon Drive
Suite 101
Verona, Wisconsin 53593
(608) 848-5060

MILWAUKEE REGIONAL OFFICE
N22 W22931 Nancy Court
Suite 3
Waukesha, Wisconsin 53186
(262) 513-0666

PREPARED FOR:
Habitat for Humanity

PO Box 258128
Madison, WI 53725-8128

PROJECT
**The Park Homes
at Northport
Commons**
542 Northport Drive
Madison, WI

Although every effort has been made in preparing these plans and checking them for accuracy, the contractor and subcontractors must check all details and dimensions of their trade and be responsible for the same.

These plans and designs are copyright protected and may not be used in whole or in part without the written consent of Jenkins Survey and Design, Inc.

ITEM	DATE
Drawn: SCL	12-17-08
Checked:	
Approved:	

SEAL/SIGNATURE

SHEET TITLE
**GDP Conceptual
Landscape
Plan**

SHEET NUMBER
L-2.0

JSD PROJECT NUMBER
HH170B

JSD PROJECT FILE
Task1

SCALE
1"=30'-0"