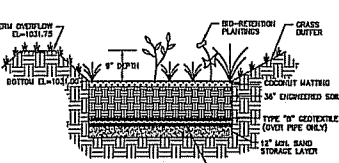
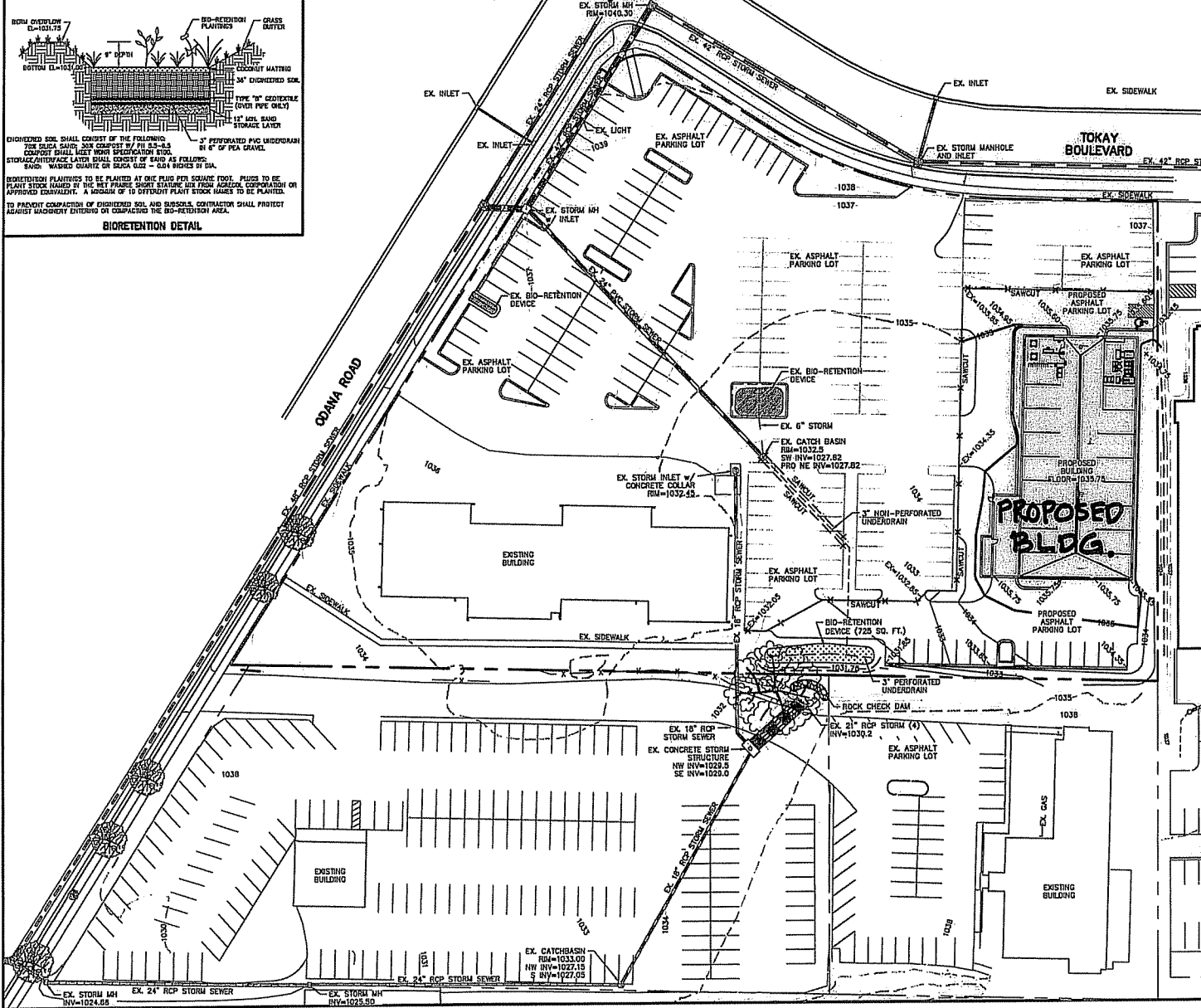


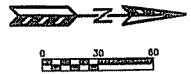


QUAM ENGINEERING, LLC 4604 Siggekow Road, Suite A - McFarland, WI 53558 (608) 838-7750 \SU-28-08\SU28BASE2013.DWG

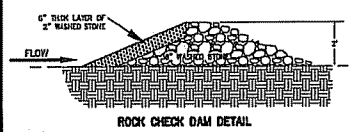


**BIORETENTION DETAIL**

ENHANCED SOIL SHALL CONSIST OF THE FOLLOWING:  
 70% SIEVE SAND, 30% COMPOST (BY V/W 5:1)  
 COURSE SHALL MEET 100% SPECIFICATION 800.  
 STORAGE/RETENTION LAYER SHALL CONSIST OF SAND AS FOLLOWS:  
 SAND: WASHED QUARTZ OR SILICA SAND - 0.04 INCHES BY DIA.  
 3\"/>



TO OBTAIN LOCATION OF PARTICIPATING UNDERGROUND FACILITIES BEFORE YOU DIG BY MICROPIH  
**CALL DIGGERS HOTLINE**  
 1-800-242-6811  
 TOLL FREE  
 (FOR THE HEARING IMPAIRED) (800)516-2228  
 WE REQUEST YOU CALL 24 HOURS BEFORE YOU EXCAVATE  
 REQUIRES MIN. OF 3 WORK DAYS NOTICE BEFORE YOU EXCAVATE



**EROSION NOTES:**  
 EROSION CONTROL MEASURES SHALL BE INSTALLED PRIOR TO GRADING OPERATIONS AND SHALL BE MAINTAINED THROUGHOUT CONSTRUCTION. RESTORATION IS ESTABLISHED.  
 SILT FENCE AND STOOPED SLOPES SHALL BE FIELD LOCATED BY THE ENGINEER.  
 CUT AND FILL SLOPES SHALL BE NO GREATER THAN 3:1.  
 ADDITIONAL EROSION CONTROL MEASURES WILL BE INSTALLED AS NEEDED.

**TIME SCHEDULE:**  
 NOVEMBER 18, 2013 INSTALL INITIAL EROSION CONTROL DEVICES.  
 NOVEMBER 18, 2013 - JULY 31, 2014 CONSTRUCT PHASE I BUILDING AND PARKING LOT AND RESTORE DISTURBED AREAS.  
 AUGUST 1 - 15, 2014 INSTALL BIO-RETENTION DEVICES.

**RESTORATION NOTES:**  
 ALL DISTURBED AREAS, EXCEPT STREET PAVEMENT AND SIDEWALK AREAS, SHALL RECEIVE A MINIMUM OF FOUR (4) INCHES OF TOPSOIL, FERTILIZER, SEED AND MULCH. RESTORATION SHALL OCCUR AS SOON AFTER THE DISTURBANCE AS PRACTICAL. SEED MIXTURE 40 SHALL BE USED ON ALL AREAS. MULCHES SHALL BE 1 1/2 INCHES THICK WITH SECTION 400 OF D.G.T. SPECIFICATIONS. AN EQUAL AMOUNT OF ANNUAL WHEATGRASS SHALL BE ADDED TO THE MIX.  
 SEED MIXTURES SHALL BE APPLIED AT THE RATE OF SEVEN (7) POUNDS PER 1,000 SQUARE FEET. FERTILIZER SHALL BE APPLIED AT THE RATE OF SEVEN (7) POUNDS PER 1,000 SQUARE FEET.  
 FERTILIZER SHALL MEET THE FOLLOWING REQUIREMENTS THAT FOLLOW: NITROGEN, NOT LESS THAN 16%, PHOSPHORUS, NOT LESS THAN 8%, POTASSIUM, NOT LESS THAN 8%.

**OWNER:**  
 QUAM ENGINEERING, LLC  
 4604 SIGGEKOW ROAD  
 MCFARLAND, WI 53558

**ENGINEER:**  
 QUAM ENGINEERING, LLC  
 ATTN: RYAN QUAM  
 4604 SIGGEKOW ROAD, SUITE A  
 MCFARLAND, WI 53558

**SMART MOTORS - USED CAR BUILDING**  
 GRADING AND EROSION CONTROL PLAN - PHASE I  
 PAGE: 3 OF 4  
 DATED: NOVEMBER 1, 2013

**QUAM ENGINEERING, LLC**  
 Residential and Commercial Site Design Consultants  
  
 www.quamengineering.com  
 4604 Siggekow Road, Suite A - McFarland, Wisconsin 53558  
 Phone (608) 838-7750; Fax (608) 838-7752

**PARKING LOT PLAN SITE INFORMATION BLOCK**

Site Address: 4604 SIGELKOW ROAD  
 Site acreage (total): 24.120000  
 Number of building stories (above grade): 01K  
 Building height: 20'  
 DATE type of construction (new structures or additions): 22  
 Total square footage of building: 22200

Use of property: SPECIAL SERVICES  
 Gross square foot of entry: 500  
 Gross square foot of retail area: 2100  
 Number of employees in warehouse: 100  
 Number of employees in production: 200  
 Capacity of restaurant/food or assembly: N/A

Number of bicycle stalls shown: 0

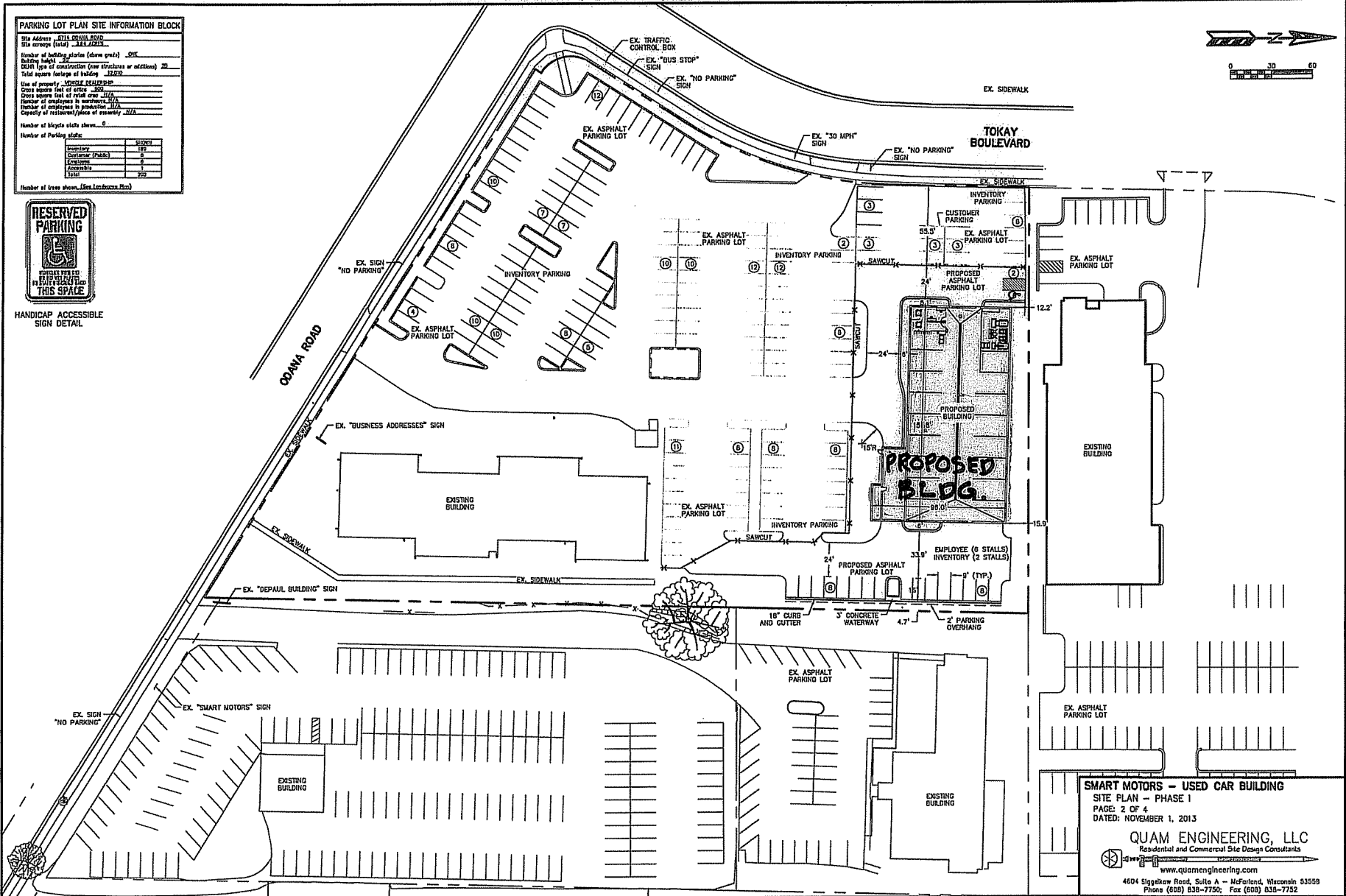
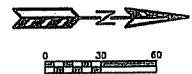
Number of parking stalls:

Inventory	182
Customer (Pass)	6
Employee	6
Accessible	6
Total	194

Number of trees shown: (See Landscape Plan)



HANDICAP ACCESSIBLE SIGN DETAIL



**SMART MOTORS - USED CAR BUILDING**  
 SITE PLAN - PHASE 1  
 PAGE: 2 OF 4  
 DATED: NOVEMBER 1, 2013

**QUAM ENGINEERING, LLC**  
 Residential and Commercial Site Design Consultants  
 www.quamengineering.com  
 4604 Sigelkow Road, Suite A - McFarland, Wisconsin 53558  
 Phone (608) 838-7750; Fax (608) 838-7752

**PLANT MATERIAL LIST**

Quantity	City	Code	Common Name	Botanical Name	Planting Size
3	ADL	ADL01	Shorea Gloriosa	Acacia leucophloea	#1 COIT.
7	WSSC	WSSC01	Yucca glauca	Yucca glauca	#1 COIT.
29	BNV	BNV01	Yucca glauca	Yucca glauca	2.5' x 8.0'
3	PRC	PRC01	Yucca glauca	Yucca glauca	1.75' x 8.0'
2	ESD	ESD01	Yucca glauca	Yucca glauca	1.75' x 8.0'
2	BTLC	BTLC01	Yucca glauca	Yucca glauca	6' x 8.0'
8	SL	SL01	Yucca glauca	Yucca glauca	2.5' x 8.0'
6	DS	DS01	Yucca glauca	Yucca glauca	2.5' x 8.0'

Quantity	City	Code	Common Name	Botanical Name	Planting Size
7	US2	US201	Yucca glauca	Yucca glauca	6' x 8.0'
17	CAJ	CAJ01	Yucca glauca	Yucca glauca	#1 COIT.
2	CS	CS01	Yucca glauca	Yucca glauca	6' x 8.0'
1	CPV	CPV01	Yucca glauca	Yucca glauca	6' x 8.0'
11	OTY	OTY01	Yucca glauca	Yucca glauca	6' x 8.0'
11	TYT	TYT01	Yucca glauca	Yucca glauca	6' x 8.0'
75	INA	INA01	Yucca glauca	Yucca glauca	#1 COIT.
1	INA	INA02	Yucca glauca	Yucca glauca	6' x 8.0'
12	FINA	FINA01	Yucca glauca	Yucca glauca	6' x 8.0'

Quantity	City	Code	Common Name	Botanical Name	Planting Size
24	CPV	CPV01	Yucca glauca	Yucca glauca	#1 COIT.
7	BRD	BRD01	Yucca glauca	Yucca glauca	2.5' x 8.0'
4	DBS	DBS01	Yucca glauca	Yucca glauca	18' x 18'
45	GLS	GLS01	Yucca glauca	Yucca glauca	#1 COIT.
24	KDN	KDN01	Yucca glauca	Yucca glauca	18' x 18'
45	GLS	GLS02	Yucca glauca	Yucca glauca	#1 COIT.
15	ORL	ORL01	Yucca glauca	Yucca glauca	#1 COIT.
25	UCS	UCS01	Yucca glauca	Yucca glauca	#1 COIT.
8	LUL	LUL01	Yucca glauca	Yucca glauca	18' x 18'
8	ULV	ULV01	Yucca glauca	Yucca glauca	2.5' x 8.0'

Quantity	City	Code	Common Name	Botanical Name	Planting Size
11	WTD	WTD01	Yucca glauca	Yucca glauca	#1 COIT.
6	ZDC	ZDC01	Yucca glauca	Yucca glauca	#1 COIT.
30	PHD	PHD01	Yucca glauca	Yucca glauca	#1 COIT.
18	WSD	WSD01	Yucca glauca	Yucca glauca	#1 COIT.
10	CDL	CDL01	Yucca glauca	Yucca glauca	#1 COIT.
54	AJS	AJS01	Yucca glauca	Yucca glauca	#1 COIT.

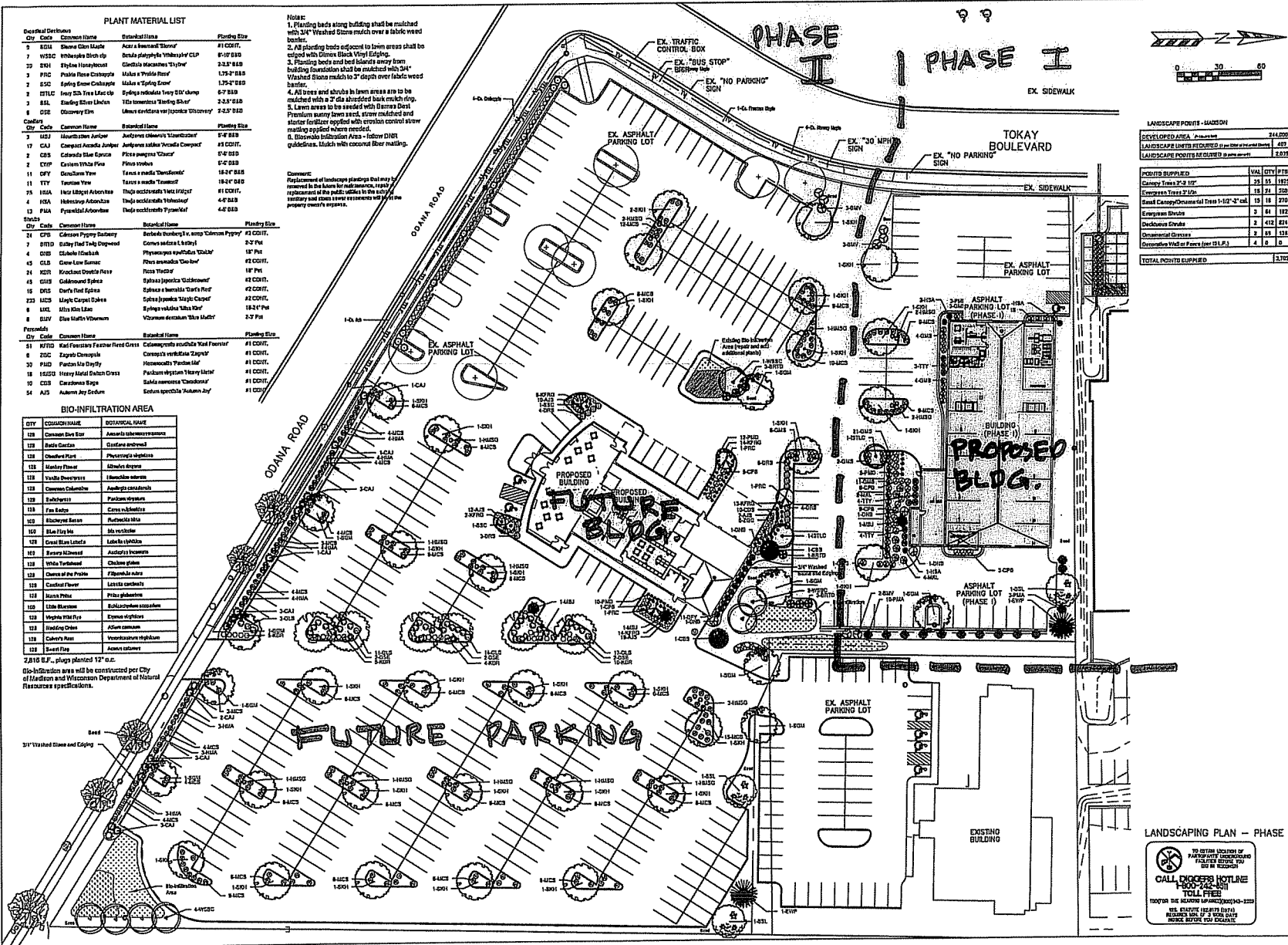
**Notes:**  
 1. Planting beds along building shall be matched with 3/4" Washed Stone match over a fabric weed barrier.  
 2. All planting beds adjacent to lawn areas shall be edged with 2" Black Vinyl Edging.  
 3. Planting beds and beds adjacent to building foundation shall be matched with 3/4" Washed Stone match to 3" depth over fabric weed barrier.  
 4. All trees and shrubs in lawn areas are to be matched with a 2" dia. shrouded bark mulch ring.  
 5. Lawn areas to be seeded with Darna Seed Premium heavy lawn seed, stone mulched and starter fertilizer applied with erosion control sowing matting applied where needed.  
 6. Stone-to-stone joints in 1/2" dia. DNR guidelines. Match with concrete fiber matting.

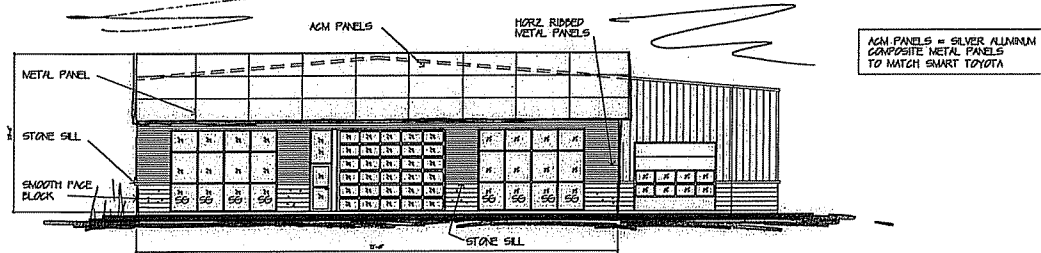
**Document:**  
 Replacement of landscape plantings that may be removed in the future for maintenance, repair or replacement of the public utility in the vicinity of the site shall be determined by the property owner's expense.

**BIO-INFILTRATION AREA**

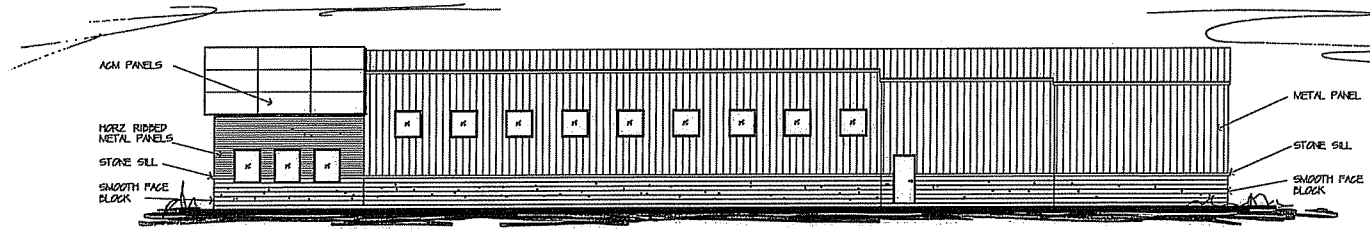
Quantity	City	Code	Common Name	Botanical Name	Planting Size
127	CON	CON01	Yucca glauca	Yucca glauca	#1 COIT.
128	CON	CON02	Yucca glauca	Yucca glauca	#1 COIT.
129	CON	CON03	Yucca glauca	Yucca glauca	#1 COIT.
130	CON	CON04	Yucca glauca	Yucca glauca	#1 COIT.
131	CON	CON05	Yucca glauca	Yucca glauca	#1 COIT.
132	CON	CON06	Yucca glauca	Yucca glauca	#1 COIT.
133	CON	CON07	Yucca glauca	Yucca glauca	#1 COIT.
134	CON	CON08	Yucca glauca	Yucca glauca	#1 COIT.
135	CON	CON09	Yucca glauca	Yucca glauca	#1 COIT.
136	CON	CON10	Yucca glauca	Yucca glauca	#1 COIT.
137	CON	CON11	Yucca glauca	Yucca glauca	#1 COIT.
138	CON	CON12	Yucca glauca	Yucca glauca	#1 COIT.
139	CON	CON13	Yucca glauca	Yucca glauca	#1 COIT.
140	CON	CON14	Yucca glauca	Yucca glauca	#1 COIT.
141	CON	CON15	Yucca glauca	Yucca glauca	#1 COIT.
142	CON	CON16	Yucca glauca	Yucca glauca	#1 COIT.
143	CON	CON17	Yucca glauca	Yucca glauca	#1 COIT.
144	CON	CON18	Yucca glauca	Yucca glauca	#1 COIT.
145	CON	CON19	Yucca glauca	Yucca glauca	#1 COIT.
146	CON	CON20	Yucca glauca	Yucca glauca	#1 COIT.
147	CON	CON21	Yucca glauca	Yucca glauca	#1 COIT.
148	CON	CON22	Yucca glauca	Yucca glauca	#1 COIT.
149	CON	CON23	Yucca glauca	Yucca glauca	#1 COIT.
150	CON	CON24	Yucca glauca	Yucca glauca	#1 COIT.
151	CON	CON25	Yucca glauca	Yucca glauca	#1 COIT.
152	CON	CON26	Yucca glauca	Yucca glauca	#1 COIT.
153	CON	CON27	Yucca glauca	Yucca glauca	#1 COIT.
154	CON	CON28	Yucca glauca	Yucca glauca	#1 COIT.
155	CON	CON29	Yucca glauca	Yucca glauca	#1 COIT.
156	CON	CON30	Yucca glauca	Yucca glauca	#1 COIT.
157	CON	CON31	Yucca glauca	Yucca glauca	#1 COIT.
158	CON	CON32	Yucca glauca	Yucca glauca	#1 COIT.
159	CON	CON33	Yucca glauca	Yucca glauca	#1 COIT.
160	CON	CON34	Yucca glauca	Yucca glauca	#1 COIT.
161	CON	CON35	Yucca glauca	Yucca glauca	#1 COIT.
162	CON	CON36	Yucca glauca	Yucca glauca	#1 COIT.
163	CON	CON37	Yucca glauca	Yucca glauca	#1 COIT.
164	CON	CON38	Yucca glauca	Yucca glauca	#1 COIT.
165	CON	CON39	Yucca glauca	Yucca glauca	#1 COIT.
166	CON	CON40	Yucca glauca	Yucca glauca	#1 COIT.
167	CON	CON41	Yucca glauca	Yucca glauca	#1 COIT.
168	CON	CON42	Yucca glauca	Yucca glauca	#1 COIT.
169	CON	CON43	Yucca glauca	Yucca glauca	#1 COIT.
170	CON	CON44	Yucca glauca	Yucca glauca	#1 COIT.
171	CON	CON45	Yucca glauca	Yucca glauca	#1 COIT.
172	CON	CON46	Yucca glauca	Yucca glauca	#1 COIT.
173	CON	CON47	Yucca glauca	Yucca glauca	#1 COIT.
174	CON	CON48	Yucca glauca	Yucca glauca	#1 COIT.
175	CON	CON49	Yucca glauca	Yucca glauca	#1 COIT.
176	CON	CON50	Yucca glauca	Yucca glauca	#1 COIT.
177	CON	CON51	Yucca glauca	Yucca glauca	#1 COIT.
178	CON	CON52	Yucca glauca	Yucca glauca	#1 COIT.
179	CON	CON53	Yucca glauca	Yucca glauca	#1 COIT.
180	CON	CON54	Yucca glauca	Yucca glauca	#1 COIT.
181	CON	CON55	Yucca glauca	Yucca glauca	#1 COIT.
182	CON	CON56	Yucca glauca	Yucca glauca	#1 COIT.
183	CON	CON57	Yucca glauca	Yucca glauca	#1 COIT.
184	CON	CON58	Yucca glauca	Yucca glauca	#1 COIT.
185	CON	CON59	Yucca glauca	Yucca glauca	#1 COIT.
186	CON	CON60	Yucca glauca	Yucca glauca	#1 COIT.
187	CON	CON61	Yucca glauca	Yucca glauca	#1 COIT.
188	CON	CON62	Yucca glauca	Yucca glauca	#1 COIT.
189	CON	CON63	Yucca glauca	Yucca glauca	#1 COIT.
190	CON	CON64	Yucca glauca	Yucca glauca	#1 COIT.
191	CON	CON65	Yucca glauca	Yucca glauca	#1 COIT.
192	CON	CON66	Yucca glauca	Yucca glauca	#1 COIT.
193	CON	CON67	Yucca glauca	Yucca glauca	#1 COIT.
194	CON	CON68	Yucca glauca	Yucca glauca	#1 COIT.
195	CON	CON69	Yucca glauca	Yucca glauca	#1 COIT.
196	CON	CON70	Yucca glauca	Yucca glauca	#1 COIT.
197	CON	CON71	Yucca glauca	Yucca glauca	#1 COIT.
198	CON	CON72	Yucca glauca	Yucca glauca	#1 COIT.
199	CON	CON73	Yucca glauca	Yucca glauca	#1 COIT.
200	CON	CON74	Yucca glauca	Yucca glauca	#1 COIT.
201	CON	CON75	Yucca glauca	Yucca glauca	#1 COIT.
202	CON	CON76	Yucca glauca	Yucca glauca	#1 COIT.
203	CON	CON77	Yucca glauca	Yucca glauca	#1 COIT.
204	CON	CON78	Yucca glauca	Yucca glauca	#1 COIT.
205	CON	CON79	Yucca glauca	Yucca glauca	#1 COIT.
206	CON	CON80	Yucca glauca	Yucca glauca	#1 COIT.
207	CON	CON81	Yucca glauca	Yucca glauca	#1 COIT.
208	CON	CON82	Yucca glauca	Yucca glauca	#1 COIT.
209	CON	CON83	Yucca glauca	Yucca glauca	#1 COIT.
210	CON	CON84	Yucca glauca	Yucca glauca	#1 COIT.
211	CON	CON85	Yucca glauca	Yucca glauca	#1 COIT.
212	CON	CON86	Yucca glauca	Yucca glauca	#1 COIT.
213	CON	CON87	Yucca glauca	Yucca glauca	#1 COIT.
214	CON	CON88	Yucca glauca	Yucca glauca	#1 COIT.
215	CON	CON89	Yucca glauca	Yucca glauca	#1 COIT.
216	CON	CON90	Yucca glauca	Yucca glauca	#1 COIT.
217	CON	CON91	Yucca glauca	Yucca glauca	#1 COIT.
218	CON	CON92	Yucca glauca	Yucca glauca	#1 COIT.
219	CON	CON93	Yucca glauca	Yucca glauca	#1 COIT.
220	CON	CON94	Yucca glauca	Yucca glauca	#1 COIT.
221	CON	CON95	Yucca glauca	Yucca glauca	#1 COIT.
222	CON	CON96	Yucca glauca	Yucca glauca	#1 COIT.
223	CON	CON97	Yucca glauca	Yucca glauca	#1 COIT.
224	CON	CON98	Yucca glauca	Yucca glauca	#1 COIT.
225	CON	CON99	Yucca glauca	Yucca glauca	#1 COIT.
226	CON	CON00	Yucca glauca	Yucca glauca	#1 COIT.

2.810 E.P., plugs planted 12" o.c.  
 Bio-infiltration area will be constructed per City of Madison and Wisconsin Department of Natural Resources specifications.

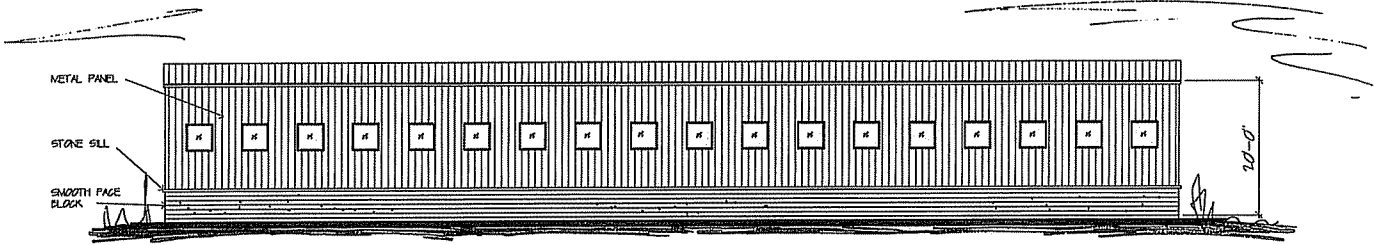




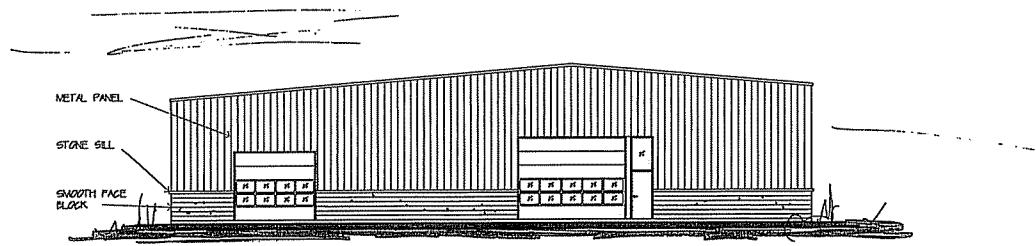
WEST ELEVATION  
1/2" = 1'-0"



SOUTH ELEVATION  
1/2" = 1'-0"



NORTH ELEVATION  
1/2" = 1'-0"



EAST ELEVATION  
1/2" = 1'-0"

REVISIORS:

**Smart Motors**  
New Car Prep Building  
5708 Odana Road  
Madison WI, 53716

**Kenneth Sullivan CO**  
GENERAL CONTRACTORS  
1000 W. MOUNTAIN VIEW BLVD. SUITE 100  
MADISON, WI 53704 TEL: 608-271-5555 FAX: 608-271-5556

DRAWING NAME: ELEVATIONS  
DRAWN BY: JIMF  
DATE: 11-20-09

SHEET: A-20  
PROJ # 115-000