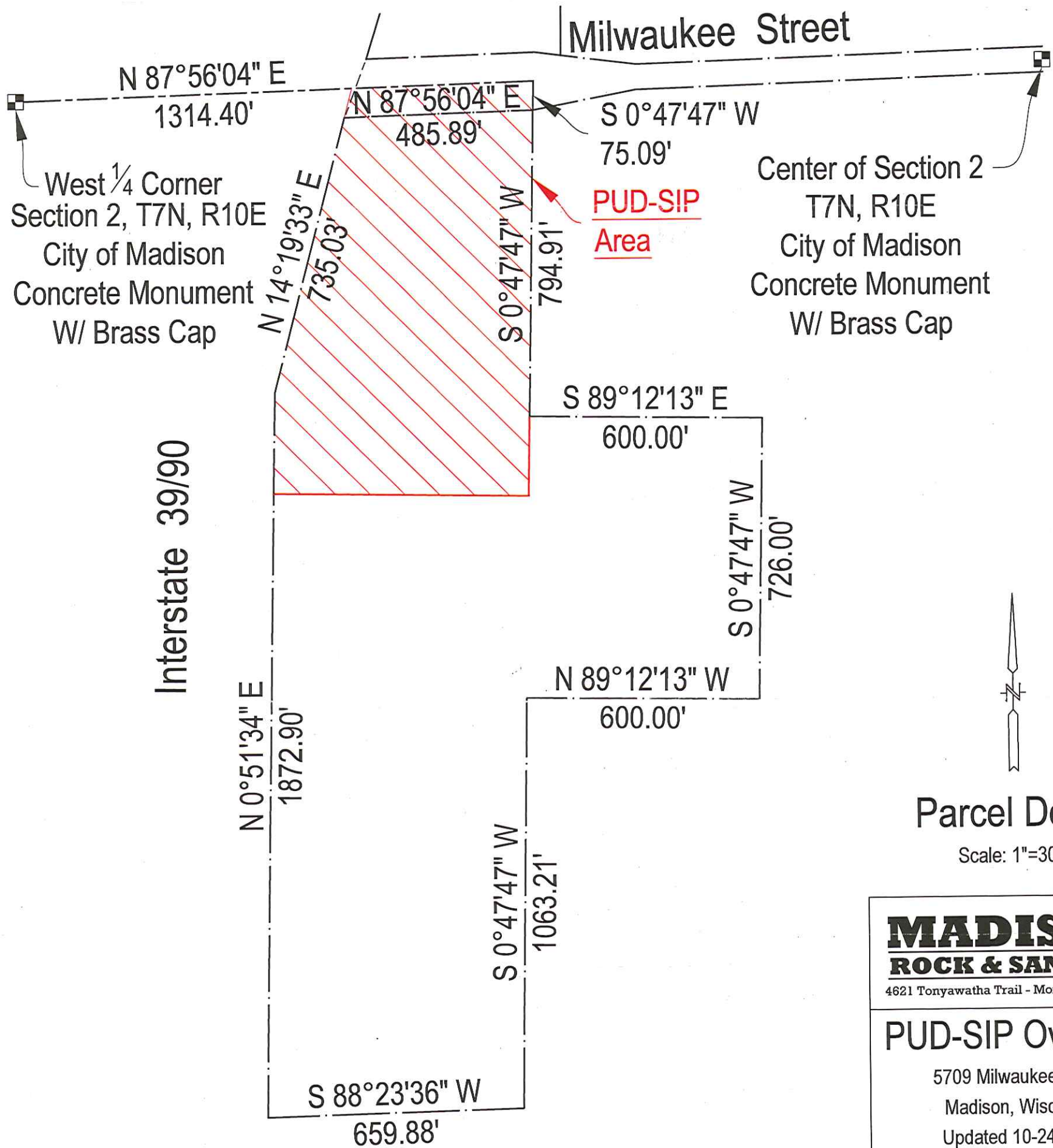


**MADISON
ROCK & SAND, LLC**

Quarry

Parcel # 0710-023-0098



Parcel Detail

Scale: 1"=300'

**MADISON
ROCK & SAND, LLC**

4621 Tonyawatha Trail - Monona, WI 53716

PUD-SIP Overview

5709 Milwaukee Street

Madison, Wisconsin

Updated 10-24-2012

MILWAUKEE STREET

570' to Bridge over Westbound I-90/39

N 87°56'04" E 846.82'

N 87°56'04" E 467.58'

West 1/4 Corner Section 2, T7N, R10E City of Madison Concrete Monument W/ Brass Cap

I-90/39 Westbound

N 14°19'32" E 813.20'

N 0°51'34" E 260.39'

S 0°47'47" W 1075.09'

N 89°08'26" W 657.53'

Scale: 1"=80'



PUD-SIP Detail

5709 Milwaukee Street
Madison, Wisconsin
Updated 10-24-2012

MADISON ROCK & SAND, LLC

4621 Tonyawatha Trail - Monona, WI 53716

