

There are no objections to this plat with respect to Secs. 236.15, 236.16, 236.20 and 236.21(1) and (2), Wis. Stats. as provided by s. 236.12, Wis. Stats.

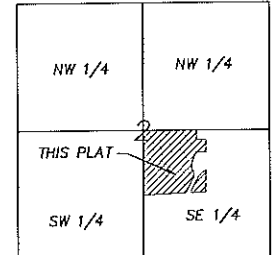
Certified _____, 20__

Department of Administration

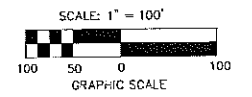


A FINAL PLAT OF EASTLAWN

PART OF LOT 1, CERTIFIED SURVEY MAP NUMBER 814, LOCATED IN THE NW 1/4 OF THE SE 1/4 OF SECTION 2, T7N, R10E, CITY OF MADISON, DANE COUNTY, WISCONSIN



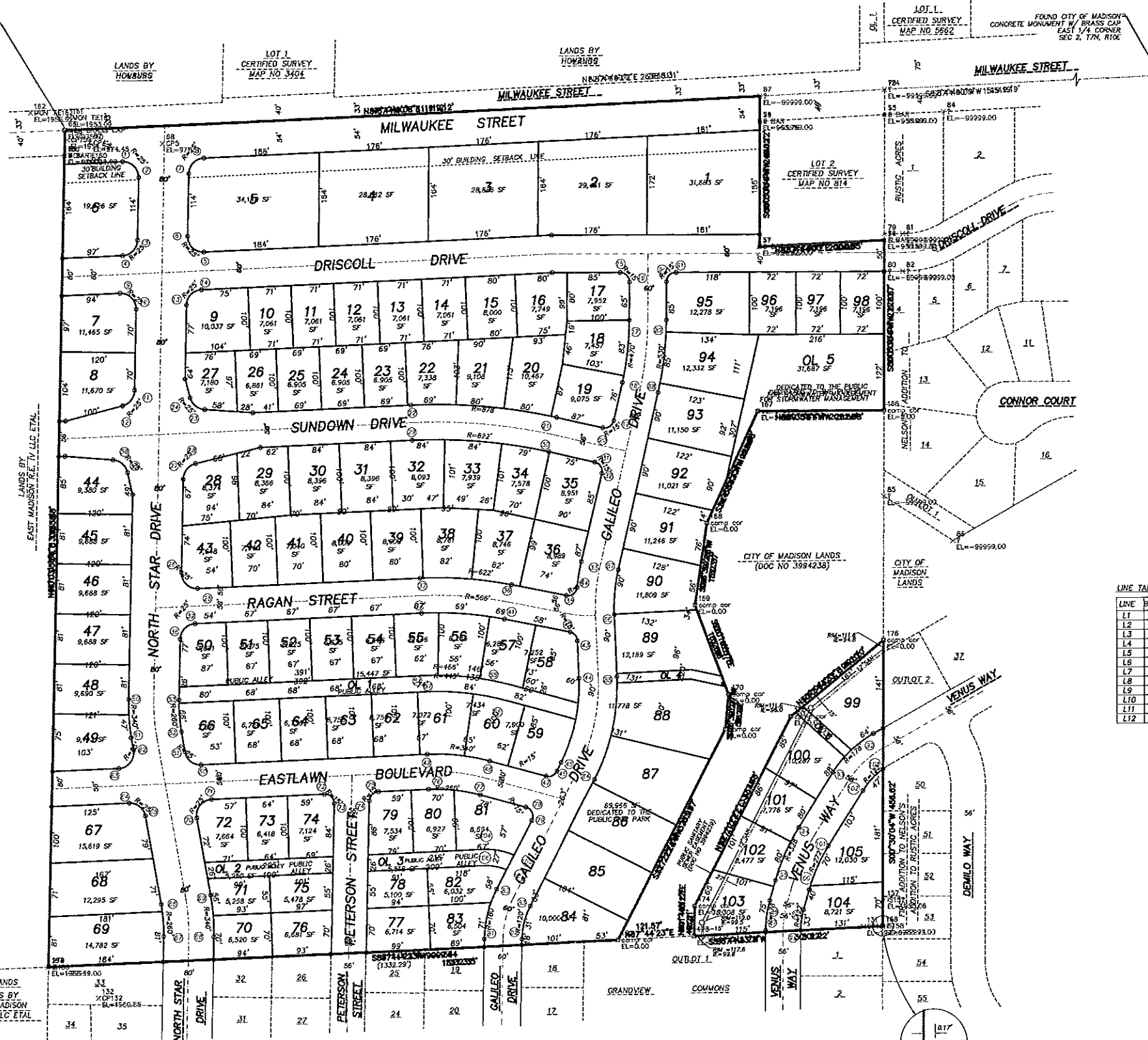
LOCATION MAP
NOT TO SCALE



BEARING REFERENCE: THE NORTH LINE OF THE SE 1/4 OF SECTION 2, T7N, R10E, WISCONSIN COUNTY COORDINATE SYSTEM, GRID BEARING N87°44'23.1\"/>



FOUND CITY OF MADISON
CONCRETE MONUMENT W/ BRASS CAP
CENTER 1/4 CORNER
SEC 2, T7N, R10E
WDOT COUNTY COORDINATES:
N: 491,812.21
E: 849,890.21
COORDINATES AS PUBLISHED
BY THE CITY OF MADISON:
N: 491,812.09
E: 849,890.17



- LEGEND**
- FOUND 3/4" REBAR
 - PLACED 1 1/2" x 18" REBAR WITH 10 LAPS
 - SOIL BORING
 - SANITARY SEWER MANHOLE
 - HYDRANT
 - GAS VALVE
 - GAS MAIN
 - UNDERGROUND ELECTRIC
 - CONIFEROUS TREE
 - DECIDUOUS TREE
 - ELECTRIC TRANSFORMER
 - TELEPHONE PEDestal/CABLE TV BOX
 - ⊕ LIGHT POLE
 - STORM SEWER INLET
 - ⊕ POWER POLE
 - FENCE

LINE TABLE

LINE	BEARING & DISTANCE
L1	S02°18'45"W - 12.48'
L2	N01°02'45"E - 9.00'
L3	S61°07'56"W - 17.67'
L4	S00°32'38"W - 2.74'
L5	S71°56'57"E - 58.81'
L6	S71°56'57"E - 52.77'
L7	N50°54'32"E - 15.17'
L8	N50°54'32"E - 8.81'
L9	S01°02'45"W - 26.04'
L10	N10°14'21"W - 26.26'
L11	S27°14'34"W - 26.03'
L12	N01°02'45"E - 26.04'

D'ONOFRIO KOTTKE AN ASSOCIATES, INC.
7530 Westward Way, Madison, WI 53717
Phone: 608.833.7530 • Fax: 608.833.1059
YOUR NATURAL RESOURCE FOR LAND DEVELOPMENT

OWNER/SUBDIVIDER
HOBURG EQUIPMENT, INC.
1831 OYAWATHA TRAIL
MONONA, WI 53176