

There are no objections to this plat with respect to Secs. 236.15, 236.16, 236.20 and 236.21(1) and (2), Wis. Stats. as provided by s. 236.12, Wis. Stats.

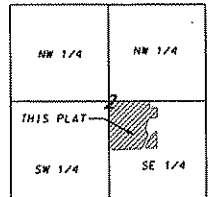
Certified \_\_\_\_\_ 20\_\_



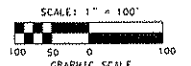
Department of Administration

# A FINAL PLAT OF EASTLAWN

PART OF LOT 1, CERTIFIED SURVEY MAP NUMBER 814, LOCATED IN THE NW1/4 OF THE SE1/4 OF SECTION 2, T7N, R10E, CITY OF MADISON, DANE COUNTY, WISCONSIN



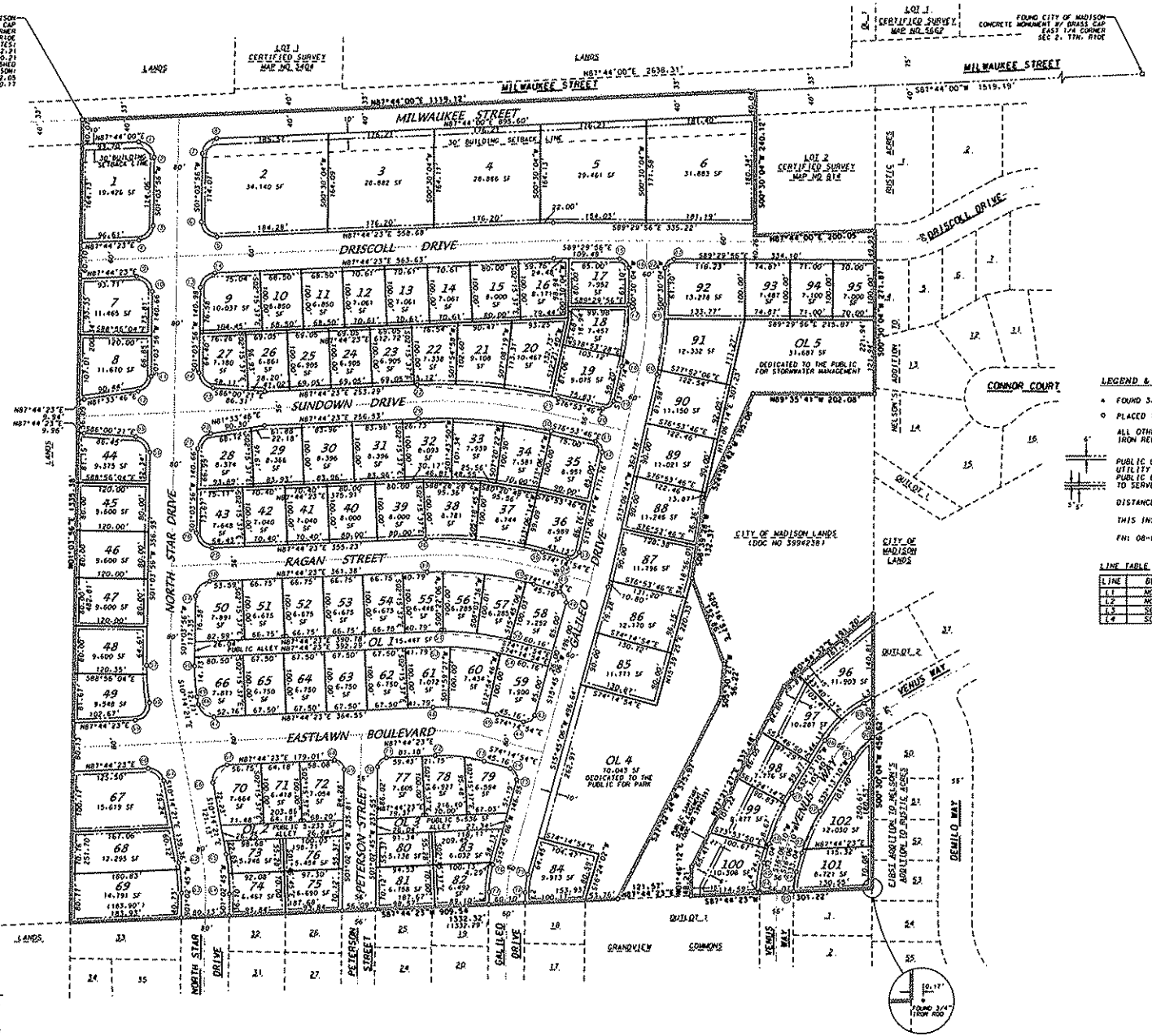
LOCATION MAP NOT TO SCALE



BEARING REFERENCES: THE NORTH LINE OF THE SE1/4 OF SECTION 2, T7N, R10E, WISCONSIN COUNTY COORDINATE SYSTEM; GRID BEARING N07°44'23"E.

FOUND CITY OF MADISON CONCRETE MONUMENT BY BARNES CAP CENTER 1/4 CORNER SEC. 2, T7N, R10E, WISCONSIN COUNTY COORDINATE SYSTEM; N1°49'32.21"E 0.040-892.21' COORDINATES AS PROVIDED BY THE CITY OF MADISON; N1°49'32.21"E 0.040-892.21'

FOUND CITY OF MADISON CONCRETE MONUMENT BY BARNES CAP EAST 1/4 CORNER SEC. 2, T7N, R10E



**LEGEND & NOTES**

- FOUND 3/4" REBAR
- PLACED 1 1/4"x16" IRON REBAR. WT=1.50 LB/LF
- ALL OTHER LOT AND OUTLOT CORNERS MARKED WITH 3/4"x16" IRON REBAR. WT=1.50 LB/LF.
- PUBLIC UTILITY EASEMENT (UNLESS OTHERWISE DIMENSIONED). UTILITY EASEMENTS AS HEREIN SET FORTH ARE FOR THE USE OF PUBLIC BODIES AND PRIVATE PUBLIC UTILITIES HAVING THE RIGHT TO SERVE THE AREA.
- DISTANCES, LENGTHS AND WIDTHS ARE MEASURED TO THE NEAREST HUNDRETH OF A FOOT.
- THIS INSTRUMENT WAS DRAFTED BY D'ONFRIO, KOTKE & ASSOCIATES, INC.
- FNI: 08-07-110

**LINE TABLE**

LINE	BEARING & DISTANCE
L.1	N01°02'45"E - 20.68'
L.2	N01°02'45"E - 17.23'
L.3	S61°07'56"W - 17.87'
L.4	S00°52'58"W - 2.24'

D'ONFRIO KOTKE & ASSOCIATES, INC.  
7530 Woodward Way, Madison, WI 53717  
Phone: 608.833.7530 • Fax: 608.833.1089  
YOUR NATURAL RESOURCE FOR LAND DEVELOPMENT

