

# EASTLAWN

6001 Milwaukee Street • Madison, Wisconsin

## MASTER PLAN

<b>R2T Zoning: Single Family (Street Accessed)</b>	<b>69 Units</b>
68' x 100'	25 Units
80' x 100'	36 Units
90' x 120'	8 Units
<b>R2Y Zoning: Single Family (Alley Accessed)</b>	<b>27 Units</b>
65'-73' x 100'	27 Units
<b>PUD Zoning: Mixed Residential</b>	<b>32 Units</b>
Duplex	24 Units
4-Units	8 Units

**Total Units** **128 Units**

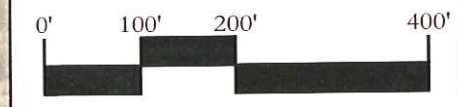
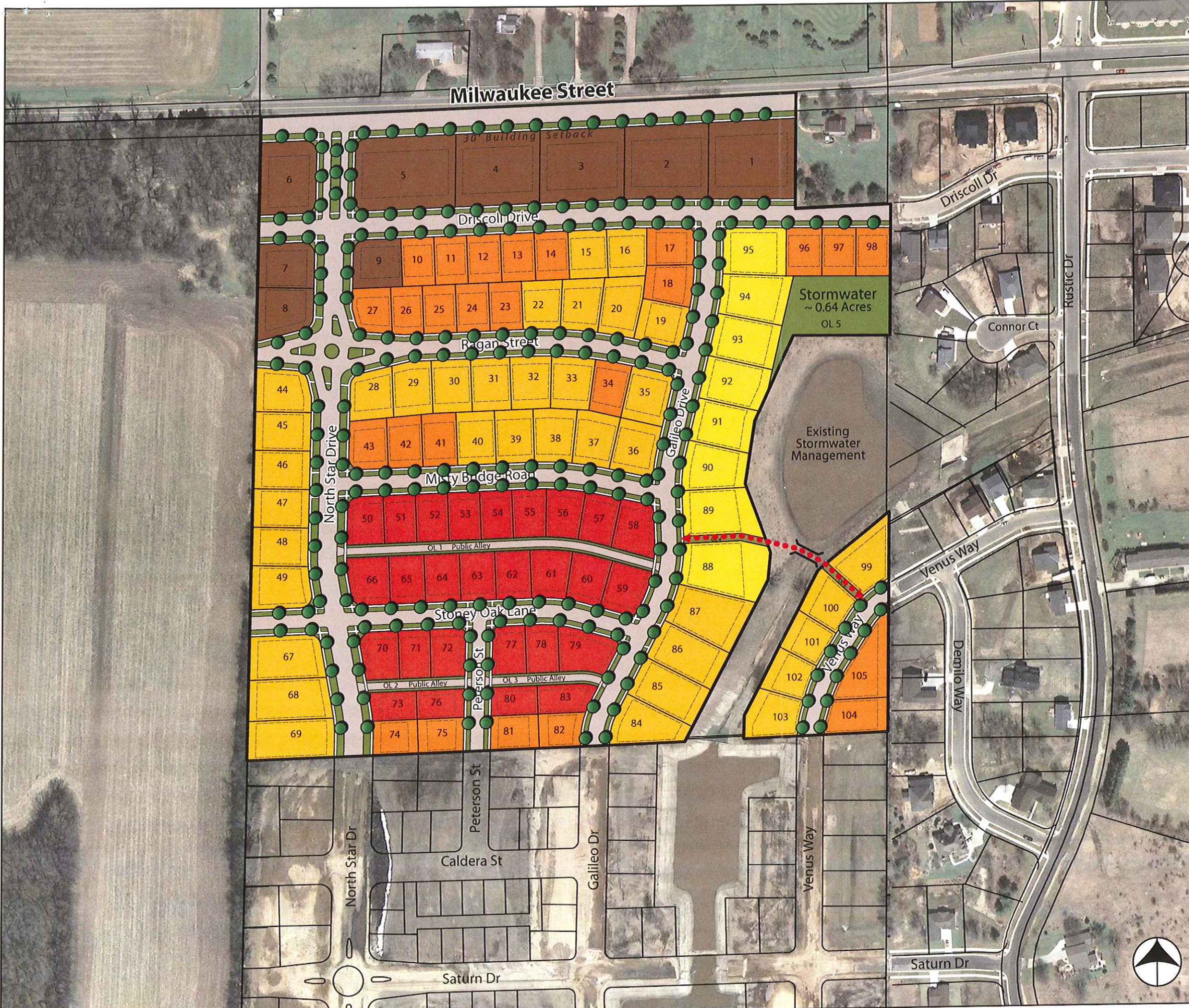
- Conservancy
- Trail Connection
- Required Park Dedication** **3.16 Acres**
- ~ 1100 Sq. Ft. @ 120 SF & Duplex Units - 132,000 Sq. Ft.
- ~ 700 Sq. Ft. @ 8 MF Units - 5,600 Sq. Ft.

## Land Areas

Single Family	19.6 Acres
Mixed Residential	4.4 Acres
Stormwater Management	0.7 Acres
Public ROW	10.6 Acres
Public Alleys	0.6 Acres

**Total Area** **35.9 Acres**

**Net Density** **5.2 Units Per Acre**



Shaping places, shaping change  
Madison & Milwaukee, Wisconsin  
Vandewalle & Associates, Inc.  
December 17, 2008